



SLX NANO 2.0 Dual Motion Sensor for Glove User Manual

[Home](#) » [SLX](#) » SLX NANO 2.0 Dual Motion Sensor for Glove User Manual 

SLX NANO 2.0 Dual Motion Sensor for Glove User Manual



Contents

- [1 Composition](#)
- [2 Register Product](#)
- [3 Swing with Nano sensor](#)
- [4 Charging and using Power bank](#)
- [5 Button and LED Guide](#)
- [6 Firmware Update](#)
- [7 Device Factory Reset](#)
- [8 Using E6 Connect](#)
- [9 Using E6 Connect](#)
- [10 Troubleshooting](#)
- [11 FCC / IC RULES](#)
- [12 SPECIFICATION](#)
- [13 Documents / Resources](#)
 - [13.1 References](#)
- [14 Related Posts](#)

Composition

SLX-NANO 2.0 (Multi Motion Sensor) 2.0 model components.
It may be changed depending on some package keys.



Charger Cable

Register Product

Welcome to SLX. Register your product right away.
After registration, you will receive an E6 Connect license.



Scan QR with Camera App

You must register your product and serial number on [SwingLogic.us](https://register.swinglogic.us) and select the license type to receive your E6 License key



Or navigate to

<https://register.swinglogic.us>

Registration STEPS

Use Camera app to scan included QR code Fill out registration information. E6 license key will be emailed from registration@swinglogic.us and is accessible from the SwingLogic user portal Set up E6 account at <https://portal.e6golf.com/> using the same email address in step 2 Redeem license key Download E6 Connect and setup using the same email address as above

Caution) If you do not register the product, you will not be able to receive a license, and some AS and exchange may be difficult.

Swing with Nano sensor

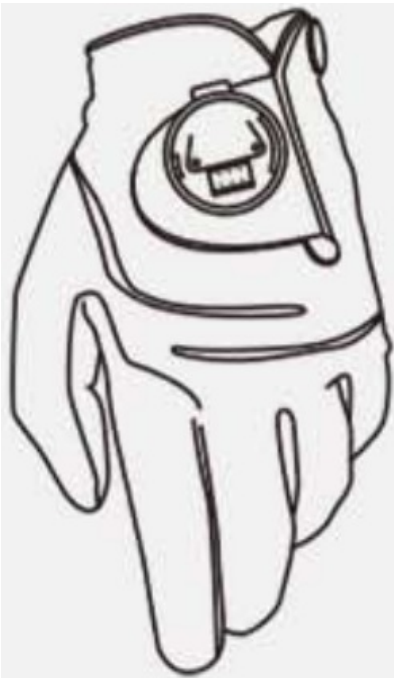
If you use a nano sensor, you can get more accurate swing results.
Golf gloves are required when swinging using the nano sensor.

Mount the sensor as shown in the figure below and install it vertically in the correct position to increase the accuracy.

If you use nano sensor, you can get more accurate swing results.
For accurate use, install it as shown in the figure below.

NANO Glove mount and Swing Guide

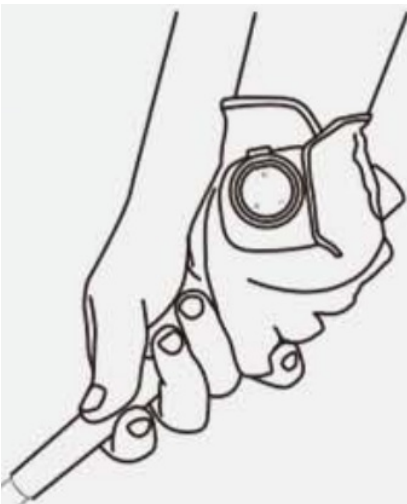
1. Insert the glove with the hook facing up as shown in the picture.



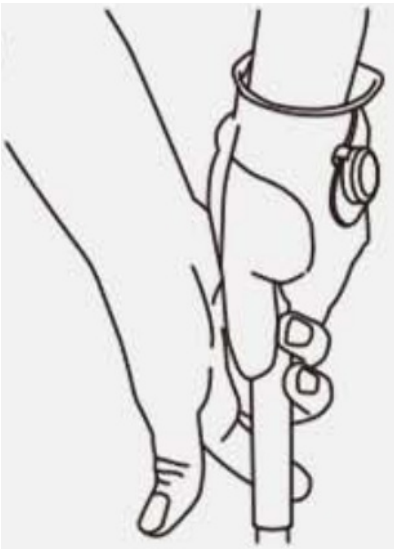
2. Insert the NANO sensor into the mount, turn it exactly 90 degrees clockwise (USB direction is down)



3. Be well leveled in the setup position



4. Swing within 3 seconds of vibration



5. Raise your wrist up to control the club



Note) Swing recognition may be difficult depending on the golfer's setup posture. In this case, adjust the position of your nano sensor to find the recognized position.

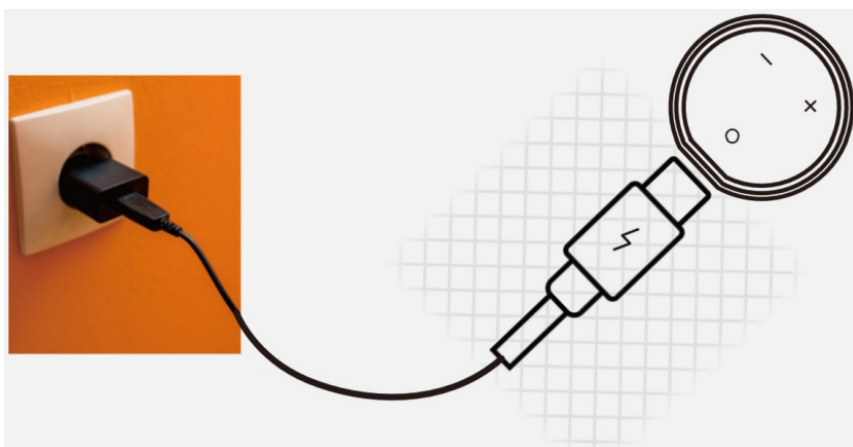
Charging and using Power bank

Charge your phone during a round of golf with power bank function

Device Charging

Adapter is not included

Nano
5V



Caution) It can be charged with USB-C type using a 5 V d.c., 1 A charging adapter. Hybrid charging time 8 hours, Nano charging time 2 hours



Correct disposal of batteries in this product
(Applicable in countries with separate collection systems.)

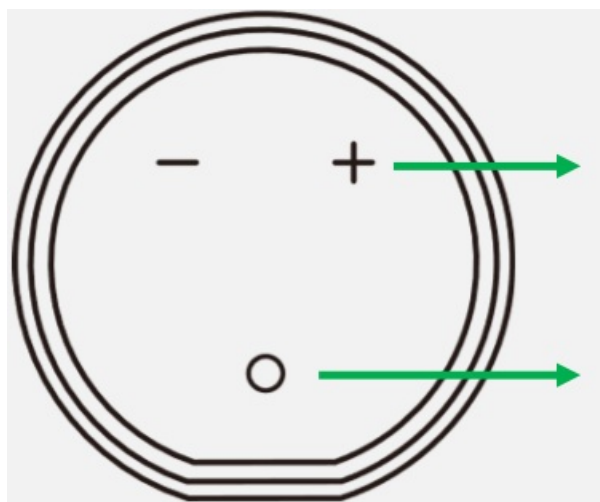
The marking on the battery, manual or packaging indicates that the battery in this product should not be disposed of with other household waste. Where marked, the chemical symbols Hg, Cd or Pb indicate that the battery contains mercury, cadmium or lead above the reference levels in EC Directive 2006/66.

The battery incorporated in this product is not user replaceable. For information on its replacement, please contact your service provider. Do not attempt to remove the battery or dispose of it in a fire. Do not disassemble, crush, or puncture the battery. If you intend to discard the product, the waste collection site will take the appropriate measures for the recycling and treatment of the product, including the battery.

Button and LED Guide

Enjoy the ultra-easy-to-operate buttons and the Nano button with remote control function.

Nano Button



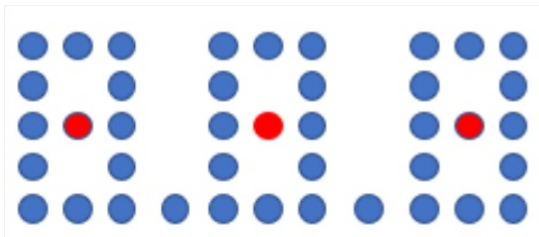
Club / Volume UP/DOWN button
Power (Push 3sec) / Display Mode Button

Nano LED

- Bluetooth Connected



- Swing Ready



- Club Change



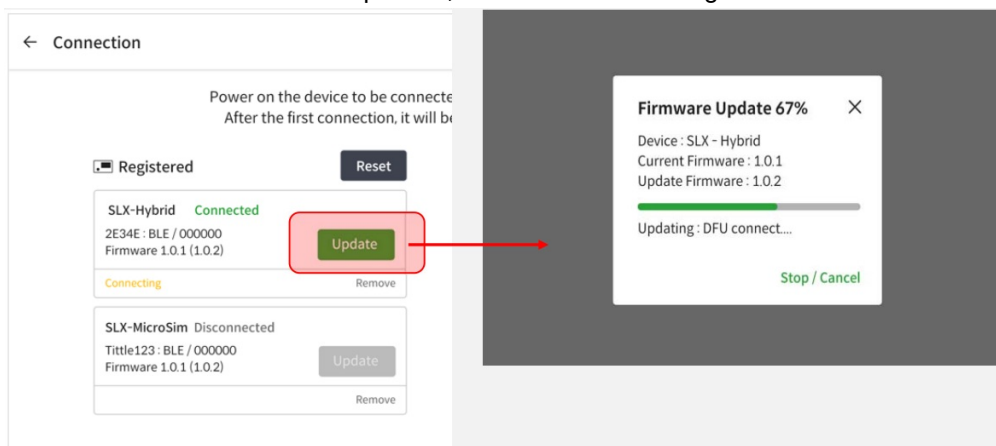
- Swing Result



Firmware Update

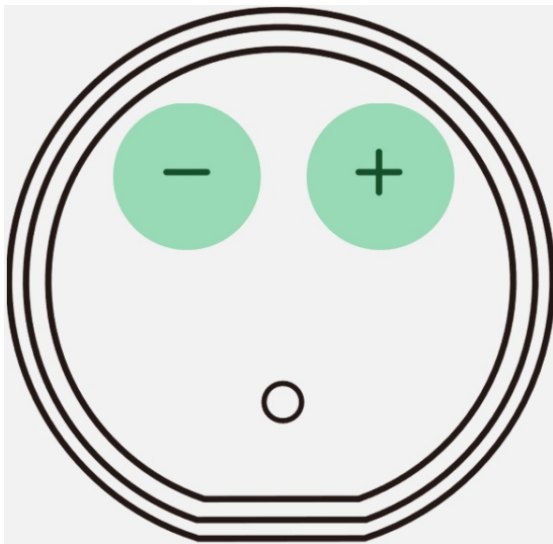
Connect SLX-CONNECT > Connect menu > Device Select

When the firmware of HW is updated, it is activated with a green button.



Device Factory Reset

Press two fingers at the same time the + / - button continuously for more than **7 seconds**.



Nano

Caution) All stored calibration data will be deleted during factory reset.

Using E6 Connect

E6 CONNECT software is available.

Please install and connect according to each SETP.

Create an account and register with Swing Logic

STEP : 1

Create an account and register with us STEP 1 Find the included Card as depicted below: You can either scan the QR code on your phone's camera or go to : <https://register.swinglogic.us>



LICENSE OPTIONS EXPLAINED (IMPORTANT)

5-Course Option is your FREE License and one version (iOS or PC) is included with Purchase. If you want to UPGRADE to the Expanded Content Subscription @ \$10/mo, that is the and Option DETAILS: Expanded Content Subscription now has ~40 Courses, mini games (darts, closest to pin, battleship...) & Online Play + multiple modes (Regular Stroke Play, captains choice, best ball etc...) Check out our website to learn more about the additional features if this interests you. If you are an avid golfer...\$10/mo for infinite rounds on 40 courses is a pretty good deal

Using E6 Connect

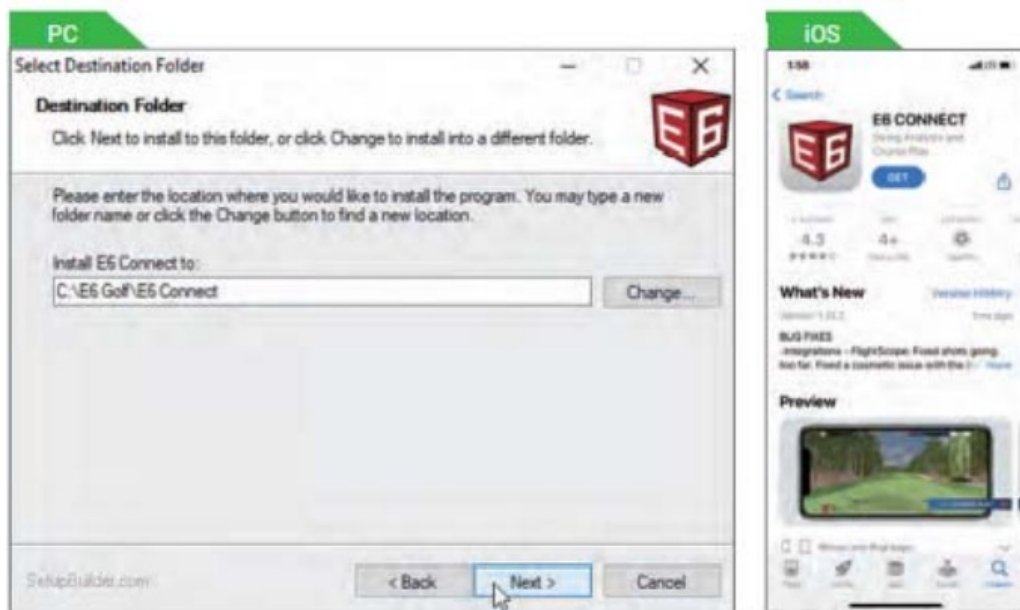
STEP : 2

Install E6 CONNEC

After download, Run the program to install the software.

PC Version: <https://portal.e6golf.com/update/e6-connect>

iOS Version: You will need to download the software from the app store. If you search for “E6 CONNECT” then it will pull up and you will be able to download



Start the E6 Application & Redeem your License

STEP : 3

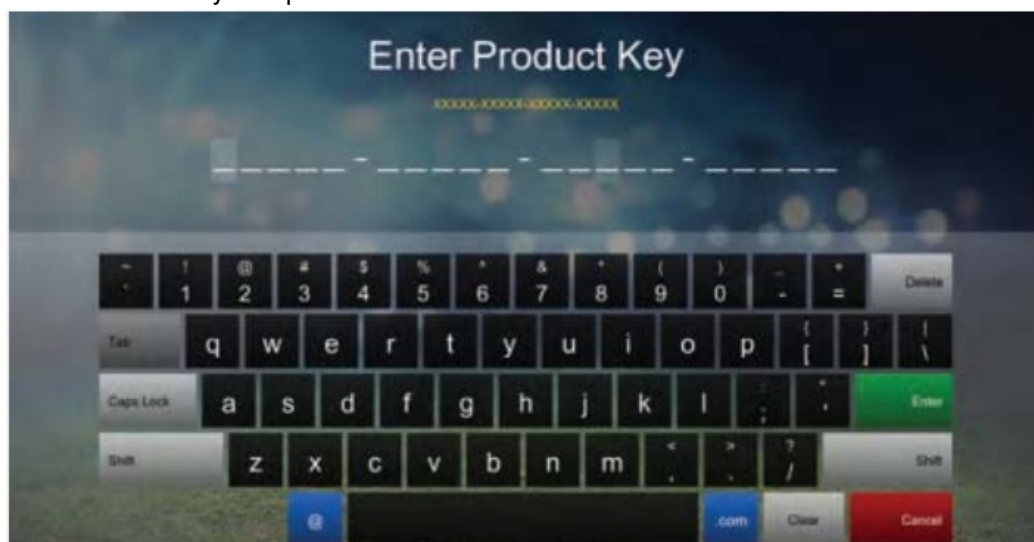
If you have a License code, press the REDEEM button to enter the code. If you don't have the code, press SKIP to move on. If you press SKIP, the demo version will be applied by default. You will also be required to setup an E6 Connect Account during this process. Please take note and remember your login credentials



STEP : 4

License Activation

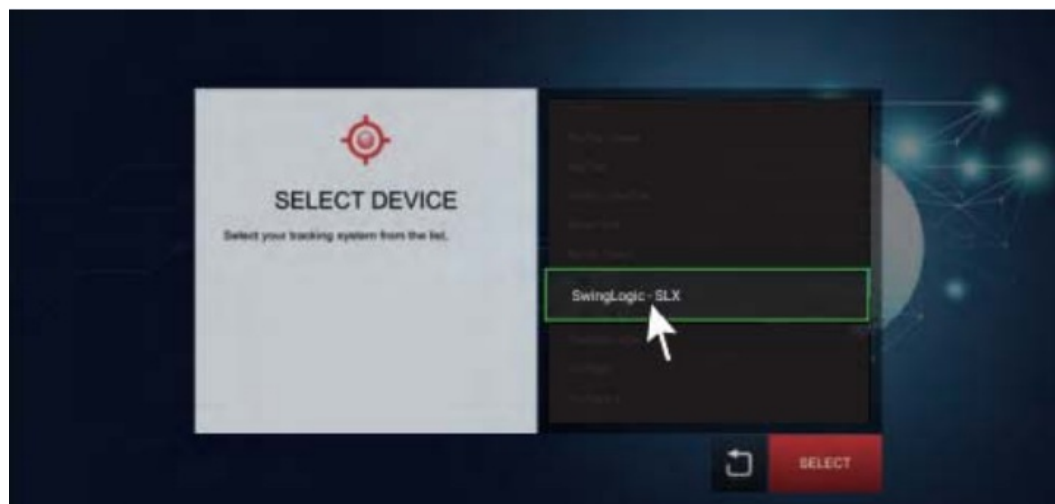
Enter License Key and press the Enter button



Select Tracking System Device

Select “SwingLogic -SLX ”

STEP : 5

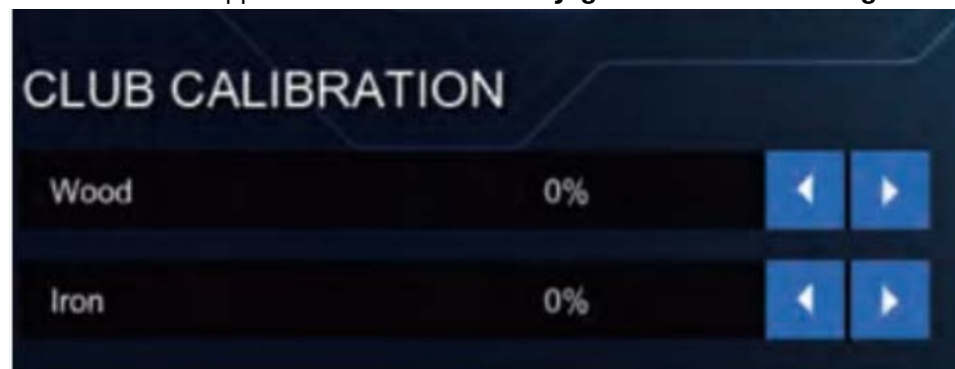


NOTE : Depending on the license type you are redeeming, the list of available trackers will be different. If you have redeemed any of the license we have provided, the list will be much shorter and contain only small sensor based products

Calibrate sensor Setting – Maximize Accuracy

STEP : 8

When inside the application's Main Menu. **Setngs→Simulator→Configure**



Important!

Default Settings should be : Difficulty = Normal, Sensitivity = Normal, Woods/Iron/Putter = Your Choice based on type of clubs you will be installing sensor on. It is best to start with 0% distance “boost” to see what your sensor is displaying initially then adjusting up or down based on simulator output vs expected ball flight. You can also increase the altitude in Environmental Settings to have your ball fly further

Check the swing data on the screen

STEP : 9

When you swing, the ball will fly on the screen and Post-Shot dialog is displayed.



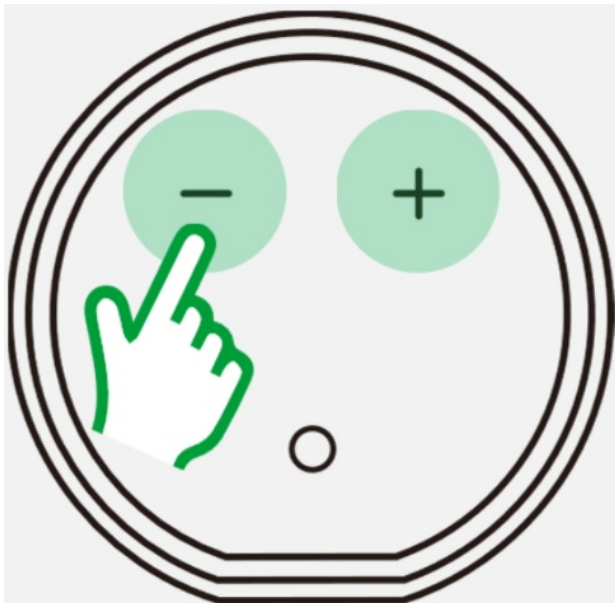
Important!

For more details on E6 Connect, check the "<https://e6golf.com/e6-connect/manual>"

Club selection control

STEP : 10

You can change your club selection outside of the E6 Connect Application by click these up and down buttons



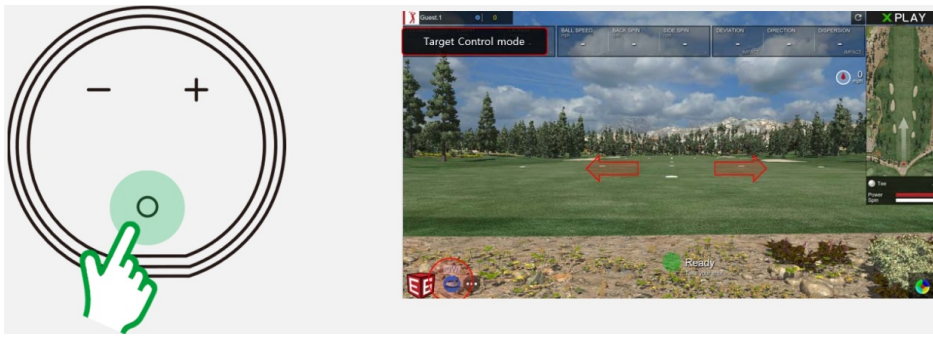
Important!

On the green, it automatically changes to the target direction. (Club side does not work on green)

Target Control

STEP : 11

In the fairway / driving range, if you click the mode button once, it will change to "Target Control mode". Afterwards, you can change the target with the up/down buttons. If you click the mode button again, it will change to "Club Control mode".



Troubleshooting

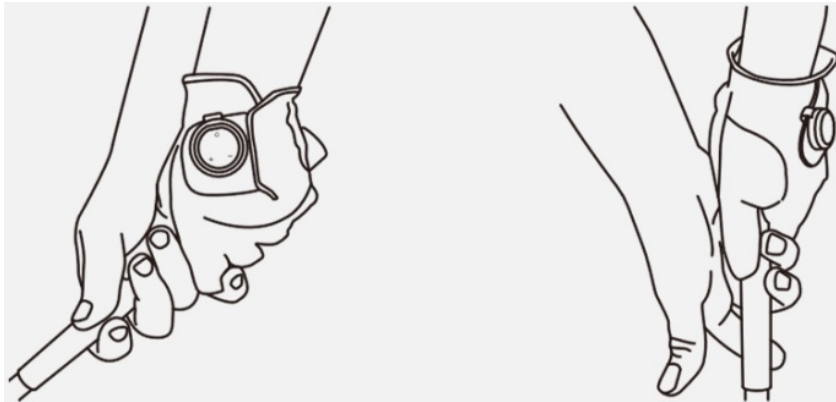
Check the latest registered information at swinglogic.us/support.
Below is a simple troubleshooting guide.

Replacing and reconnecting the Nano Sensor

- ✓ If the Hybrid and Nano are not connected or if you need to replace the Nano,
- ✓ See the “Nano Sensor Replacement” manual.
- ✓ If you press and hold the “-” button on the Hybrid and Nano sensors, they are automatically connected.

Nano Sensor Swing Recognition

- ✓ If the nano sensor does not recognize the swing well,
- ✓ try adjusting the position of the sensor installed on the glove.
- ✓ Depending on the customer’s setup posture, it may not be recognized.



Calibration of swing results

- ✓ If the swing results are very different
- ✓ try adjusting each result in the SLX-Connect app > Settings > Calibration menu.

Factory reset

- ✓ If everything does not work,
- ✓ you can reset it by pressing the “+” / “-” buttons at the same time for 7 seconds. Read the “Factory Reset” menu.

FCC / IC RULES

FCC Compliance Statement

This device complies with part 15 of the FCC Rules.

Operation is subject to the following two conditions : (1) This device may not cause harmful interference, and (2) This device must accept any interference received, including interference that may cause undesired operation.

CAUTION: Changes or modifications not expressly approved by the party responsible for compliance could void the user's authority to operate the equipment

Note: This equipment has been tested and found to comply with the limits for a Class B digital device, pursuant to part 15 of the FCC Rules. These limits are designed to provide reasonable protection against harmful interference in a residential installation. This equipment generates, uses and can radiate radio frequency energy and, if not installed and used in accordance with the instructions, may cause harmful interference to radio communications. However, there is no guarantee that interference will not occur in a particular installation. If this equipment does cause harmful interference to radio or television reception, which can be determined by turning the equipment off and on, the user is encouraged to try to correct the interference by one or more of the following measures:

- Reorient or relocate the receiving antenna.
- Increase the separation between the equipment and receiver.
- Connect the equipment into an outlet on a circuit different from that to which the receiver is connected.
- Consult the dealer or an experienced radio/TV technician for help.

RF Exposure Statement

Sample wording: This equipment complies with FCC RF exposure requirements set forth in an uncontrolled environment and can be used without any restriction.

Industry Canada Statement

This device complies with Industry Canada license-exempt RSS standard(s). Operation is subject to the following two conditions: (1) this device may not cause interference, and (2) this device must accept any interference, including interference that may cause undesired operation of the device.

SPECIFICATION

Product name : Dual motion sensor for glove (NANO 2.0)

Model No : SLX-MN200

Size : 35mm * 35 mm (12g)

Bluetooth : 4.0 BLE 2.4Ghz 1Mbps

Power Source : Li-Polymer 80mAh

Operating Temperature: -10 °C ~ 50 °C

Storage temperature: 5 °C ~ 40 °C


Manufacturer: ULIKE (MADE IN KOREA)

Address : 23, Daehak 1-ro 58beon-gil, Yeongtong-gu,
Suwon-si, Gyeonggi-do, Republic of Korea




ULIKE Co.,Ltd



Documents / Resources

| | |
|--|--|
|  | <p>SLX NANO 2.0 Dual Motion Sensor for Glove [pdf] User Manual</p> <p>SLXMN200, SLX-NANO 2.0, SLX-NANO X3, NANO 2.0 Dual Motion Sensor for Glove, NANO 2.0, Dual Motion Sensor for Glove, NANO 2.0 Motion Sensor, Motion Sensor, Sensor</p> |
|--|--|

References

-  [E6 Connect Manual - E6Golf](#)
-  [E6 Golf Portal](#)
-  [E6 Golf Portal](#)
- [User Manual](#)

[Manuals+](#), [Privacy Policy](#)

This website is an independent publication and is neither affiliated with nor endorsed by any of the trademark owners. The "Bluetooth®" word mark and logos are registered trademarks owned by Bluetooth SIG, Inc. The "Wi-Fi®" word mark and logos are registered trademarks owned by the Wi-Fi Alliance. Any use of these marks on this website does not imply any affiliation with or endorsement.