



SLINEX XR-40IPHD IP Converter for Intercom User Manual

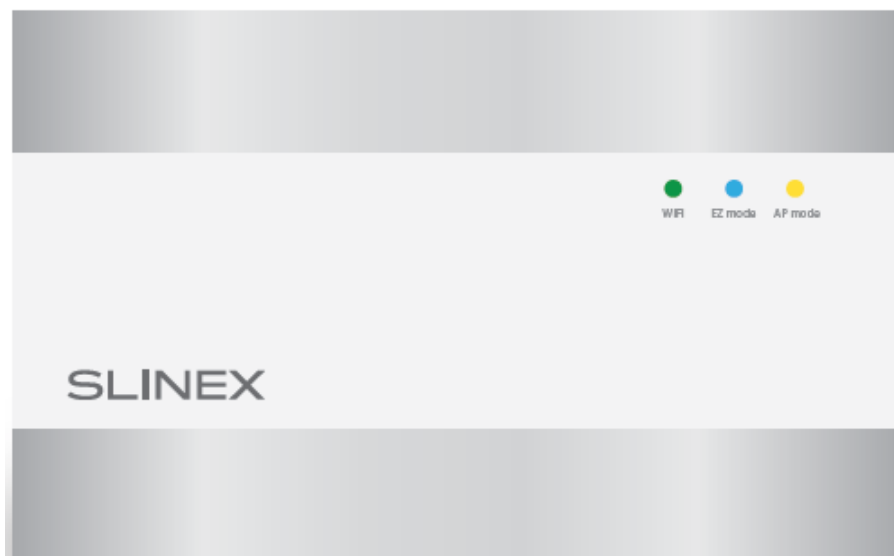
[Home](#) » [SLINEX](#) » SLINEX XR-40IPHD IP Converter for Intercom User Manual 

Contents

- [1 SLINEX XR-40IPHD IP Converter for Intercom](#)
- [2 Product Information](#)
- [3 Product Usage Instructions](#)
- [4 Safety Instructions](#)
- [5 Package](#)
- [6 Specification](#)
- [7 Description](#)
- [8 Installation](#)
- [9 Software](#)
 - [9.1 Operation](#)
- [10 Limited warranty](#)
- [11 Documents / Resources](#)
 - [11.1 References](#)
- [12 Related Posts](#)

SLINEX

SLINEX XR-40IPHD IP Converter for Intercom



Product Information

The XR-40IPHD is a converter designed with unique features and innovations. It has WIFI EZ mode and AP mode for easy connectivity. The device supports PAL/NTSC/AHD/TVI/CVI (720p, 1080p) video systems and half-duplex audio type. It has a MicroSD card slot that can support up to 128 Gb of memory. The device has a standby mode power consumption of 2W and a working mode power consumption of 6W. It comes with a wall mounting bracket, connection wires set, installation kit, and user manual.

Installation

Before installation, disconnect all power cables. The cable type used for device connection depends on the distance between the last indoor monitor in the system and the outdoor panel:

Distance	Cable Type
0 – 50 m (0 – 164 ft.)	Shielded cable with power, audio, ground, and video
50 – 80 m (164 – 262 ft.)	Shielded cable with power, audio, ground, and video
80 – 100 m (262-328 ft.)	3-wire cable with 0.75 mm (AWG 18) square of one wire and RG-59 or RG-6 coaxial cable for the video signal.
0 – 25 m (0 – 82 ft.)	Shielded cable with power, audio, ground, and video
25 – 50 m (82 – 164 ft.)	Shielded cable with power, audio, ground, and video

Product Usage Instructions

To use the device:

1. Connect the device using the appropriate cable type.

2. Turn on the device.
3. Use the MicroSD card slot to save data.
4. The device has WIFI EZ mode and AP mode for easy connectivity. Use the mode that suits your needs.
5. The device has a reset button to reset the device if needed.
6. Refer to the user manual if you encounter any issues or need further instructions.

Attention!

As a result of continuous upgrades and functionality improvements, technical characteristics of the device can be changed without any preliminary declaration. This manual can contain some inaccuracy or misprint. The owner reserves the right to make corrections to the information described in the user manual and device package. The last revision of this manual is available on www.slinex.com.

Safety Instructions

The user should not throw away the device with other industrial or nutritive trash if there is a recycling symbol. Some regions have separation and recycling systems for electronic equipment; therefore, connect with local authorities to receive information about the recycling of electronic equipment in your region.

- Read and keep that manual.
- The device installation process should be carried out by the qualified specialists.
- Use the device from -10°C to $+55^{\circ}\text{C}$, always keep it within that temperature range.
- The installation surface should be free from vibration and impact influence.
- Keep this device far from open sources of heat, such as radiators, heaters, and ovens.
- The device can be installed near other electronic equipment in case if the temperature of the environment does not exceed previously mentioned range.
- The device should be protected from the direct influence of natural phenomena, such as direct sunlight, rain or snow.
- Don't use aggressive or abradant detergent for the device's surface cleaning.
- Use soft wet cloth or tissue to remove strong dirt.
- Don't overpower outlets. It can cause fire or electric shock.

Nature protection

Don't throw away the device with other industrial or nutritive trash if you see that symbol. Some regions have separation and recycling systems for the electronic equipment. Connect with local authorities to receive information about recycling of electronic equipment for your region.

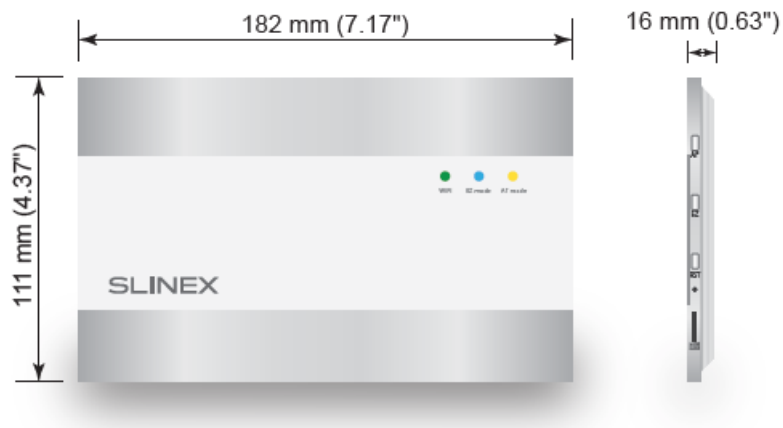
Rights and limitation of liability

All rights reserved. Any part of that document can not be published in any form, translated into other languages or reproduced in any way including electronic or mechanical. Document recording and copying is strictly denied without owner permission.

Package

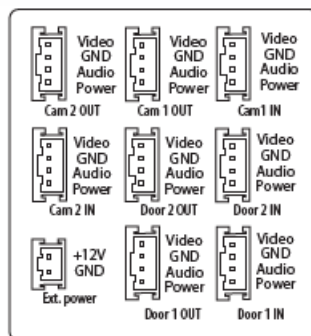
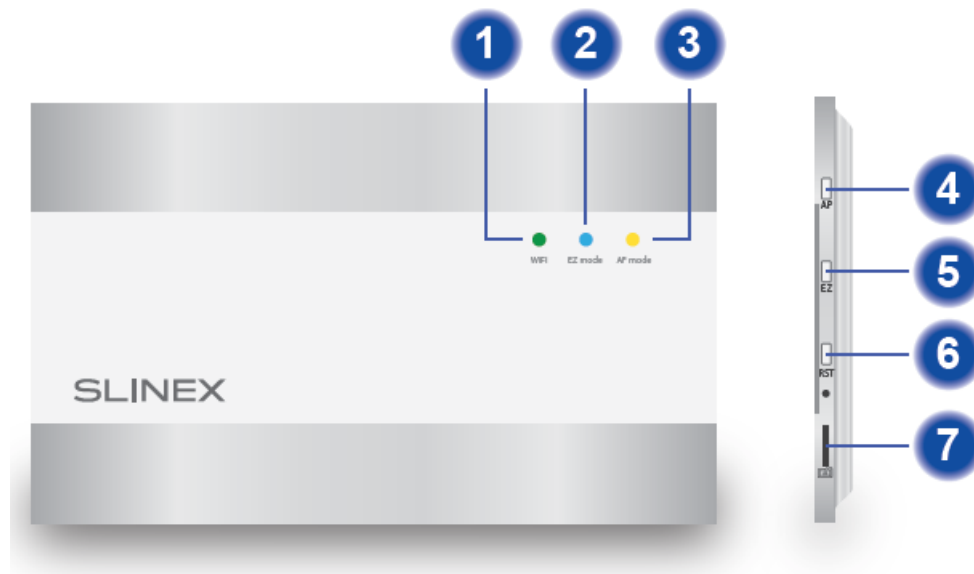
- XR-40IPHD converter – 1 pc.
- Wall mounting bracket – 1 pc.
- Connection wires set – 1 pkg.
- Installation kit – 1 pkg.
- User manual – 1 pc.

Specification



- VIDEO SYSTEM
PAL / NTSC / AHD, TVI, CVI (720p, 1080p)
- AUDIO TYPE
Half duplex
- MEMORY
MicroSD card, up to 128 Gb
- STANDBY MODE POWER CONSUMPTION
2 W
- WORKING MODE POWER CONSUMPTION
6 W
- POWER SUPPLY
Built-in power supply, ~100–240 V
- MOUNTING TYPE
Surface mount
- DIMENSIONS
182×111×16 mm (7.17×4.37×0.63")
- WORKING TEMPERATURE
-10 ... +55 °C (+14...+131 °F)

Description



1. WiFi status LED
2. EZ mode LED
3. AP mode LED
4. AP mode activation button
5. EZ mode activation button
6. Reset button
7. MicroSD card slot

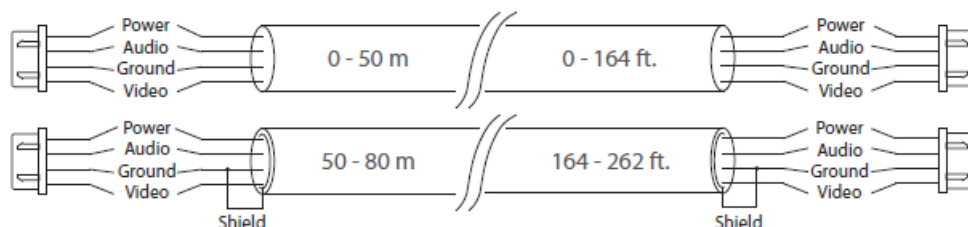
Installation

Cable requirements

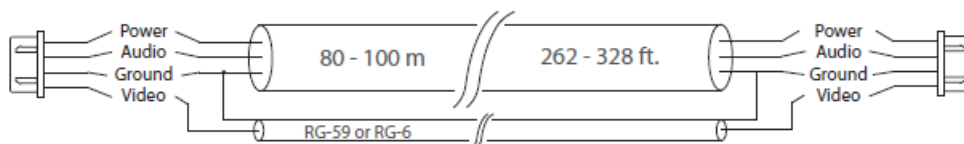
Disconnect all power cables before device installation. Cable type that is used for device connection depends on the distance between the last indoor monitor in the system and outdoor panel:

• Use 4-wire cable with such parameters:

- distance up to 25 meters (82 ft.) use a cable with 0,22 mm square of one wire (AWG 24);
- distance 25 to 50 (82-164 ft.) meters use a cable with 0,41 mm square of one wire (AWG 21);
- distance 50 to 100 meters (164-328 ft.) use a cable with 0,75 mm square of one wire (AWG 18).

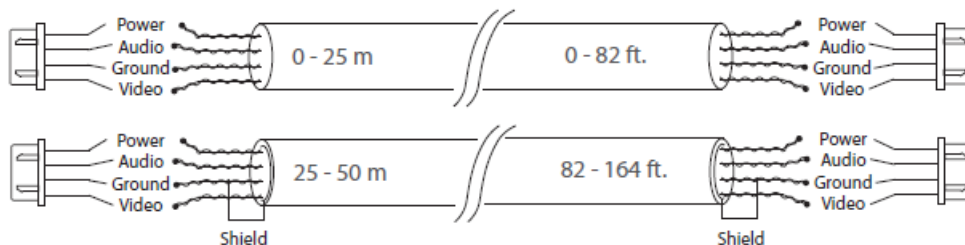


- If the distance between door monitor and door panel is between 80 and 100 meters (262-328 ft.) then use a 3-wire cable with 0,75 mm² (AWG 18) square of one wire and RG-59 or RG-6 coaxial cable for the video signal.



• Shielded or non-shielded twisted pair (not recommended):

- distance up to 25 meters (82 ft.) non-shielded twisted pair can be used;



Schematic diagrams

Diagram 1. XR-40IP coverter, Sonik 7 monitor and outdoor panels connection.

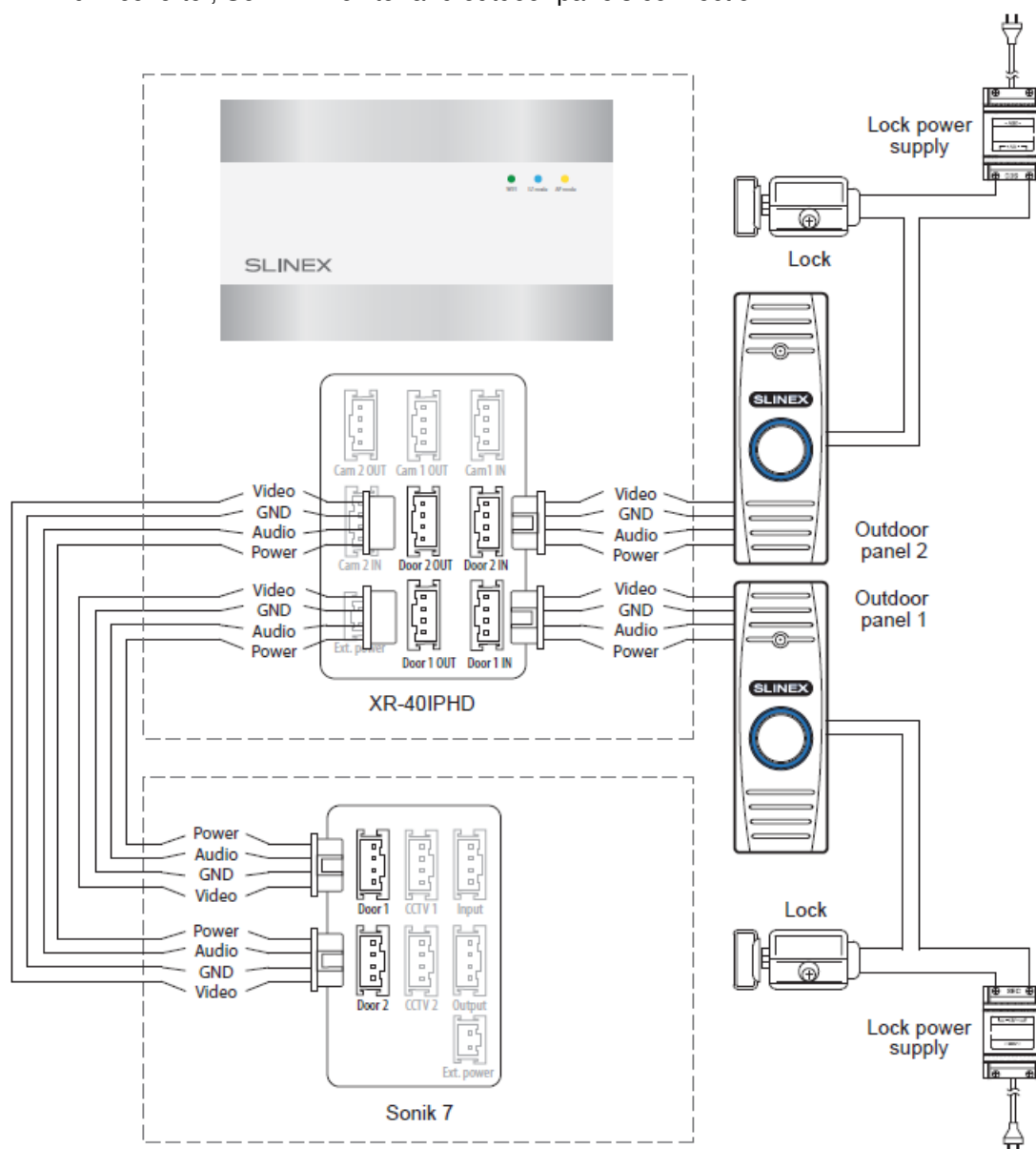
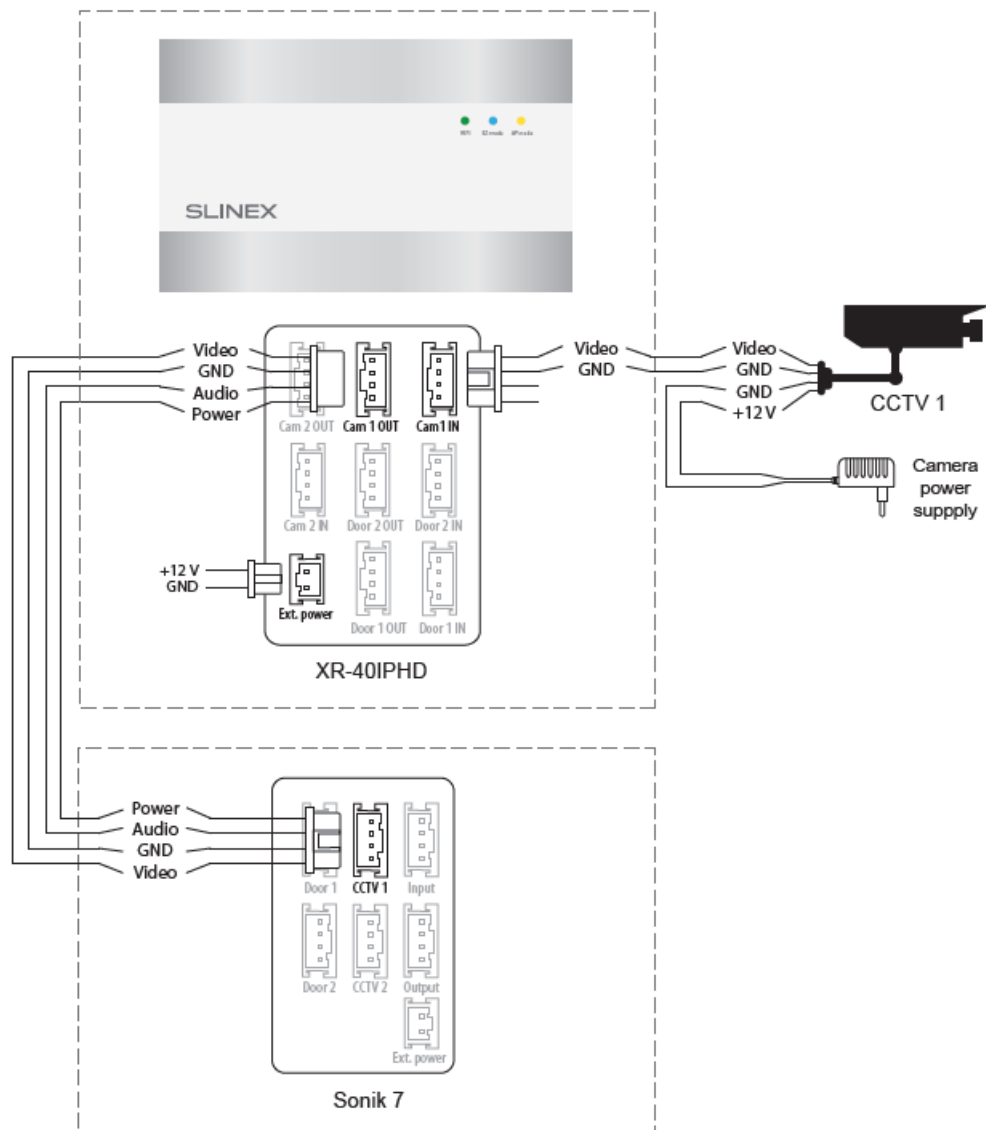


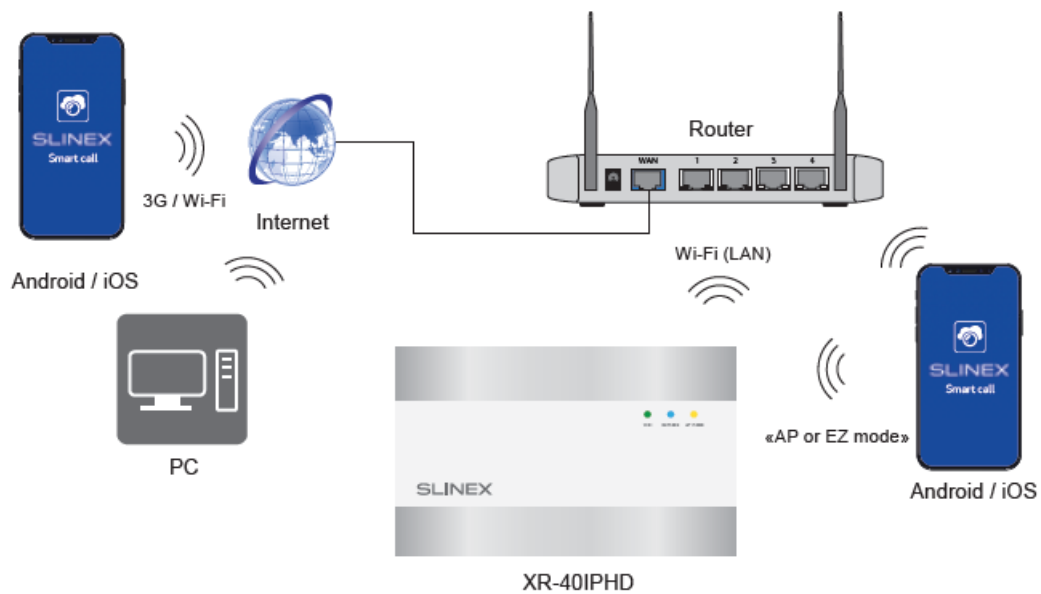
Diagram 2. XR-40IP coverter, Sonik 7 monitor and camera connection.



Notes:

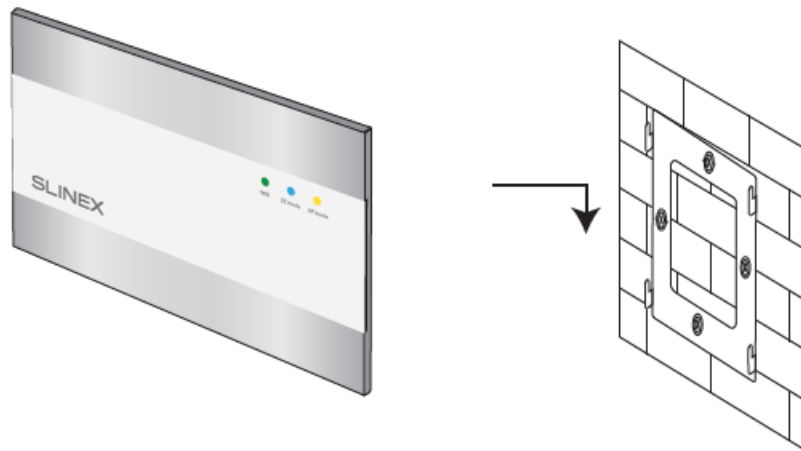
- The second video camera can be connected in the same way as the first one. «Cam 2 IN» and «Cam 2 OUT» plugs has the same pinout as «Cam 1 IN» and «Cam 1 OUT»;
- Use «Ext. power» plug to connect external power supply +12 V. While use external power supply keep main power cord ~100-240 V disconnected from the outlet, otherwise it can damage converter circuits;
- Monitor, outdoor panels, cameras, power supplies and locks, illustrated on this diagrams are optional devices and aren't included into converter kit.

Diagram 3. XR-40IPHD wireless Wi-Fi network connection.



Unit mount

1. Take the surface mount bracket from the kit and place it on 150-160 cm height;
2. Mark and drill four holes in the wall;
3. Take four anchors from the kit and hammer them into the drilled holes;
4. Fix surface mount bracket on the wall with four screws from the kit;
5. Connect all communication wires and fix the converter on the surface mount bracket.

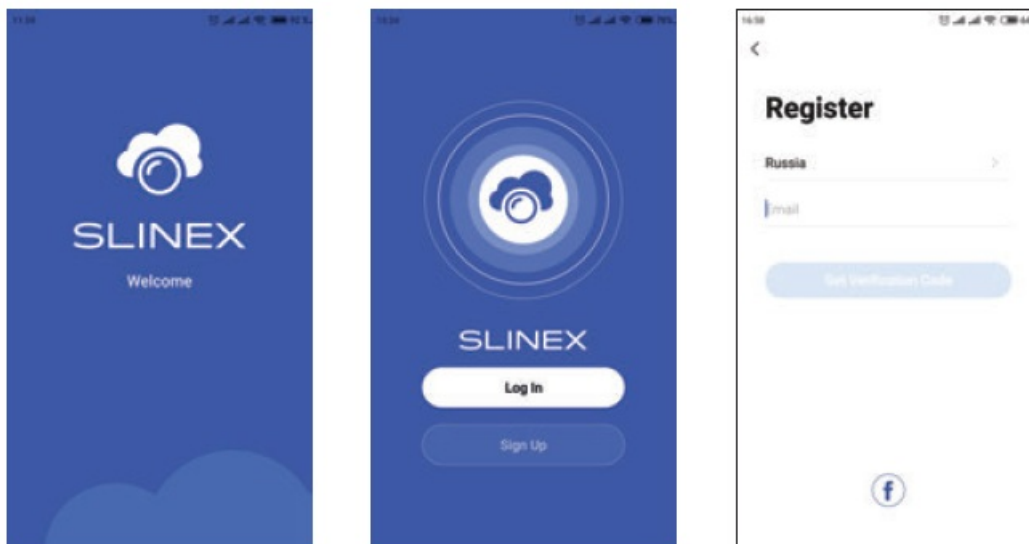


Software

Enter «Google Play» (for Android) or «Apple App Store» (for iOS) and search for «Smart Call» application, then install this application on your mobile device.

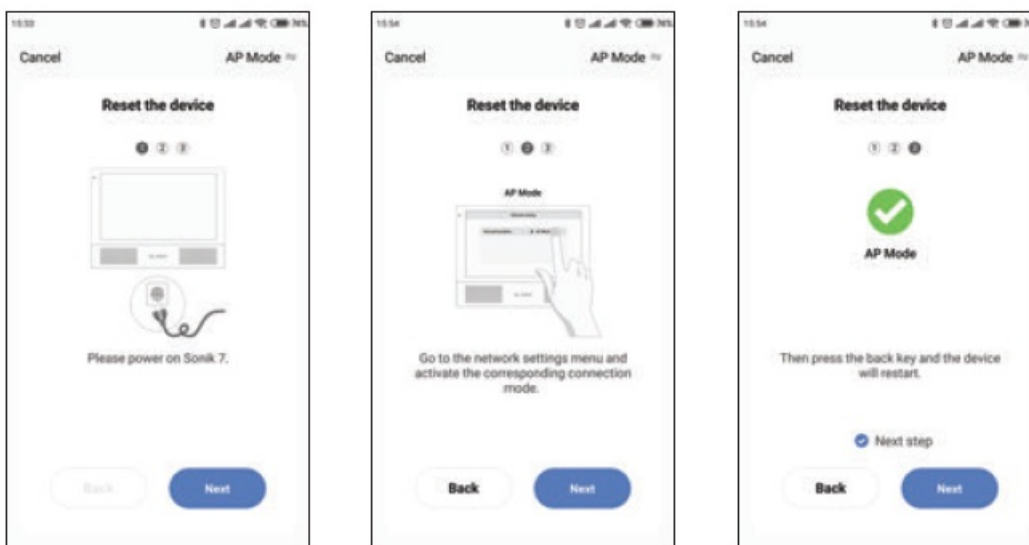
Creating new account

1. Start «Smart Call» application on your mobile device and press «Sign up» button to create an account;
2. Choose destination country and enter your Email, then press «Get verification code» button to receive an Email with verification code;
3. Check the Email, specified on the previous step;
4. Enter 6-digit code from the letter to activate your account. Set your password and press «Finish» to finalize account creation process. Use your Email as a login for Smart Call application.



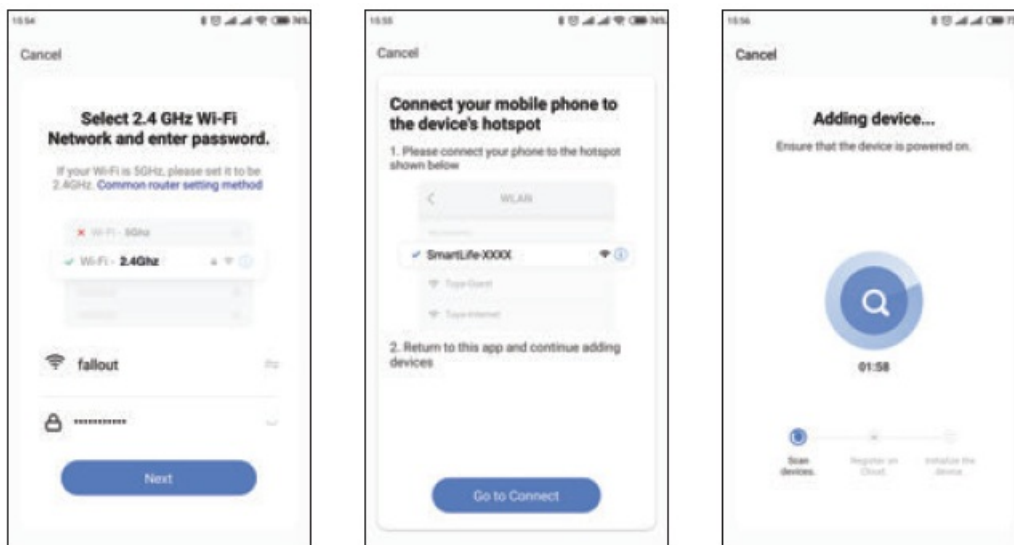
Wireless Wi-Fi network connection steps in «AP mode»

1. Connect mobile device into the same Wi-Fi network you want to connect the converter;
2. Disable 3G/4G internet connection on your mobile device;
3. Press «Add device» button and choose device model for connection;
4. Turn on the converter power and press «Next» button in the application;
5. On the converter shortly press «AP» button on the right side of the case and wait for device reboot. After reboot «AP mode» LED will become active on the front panel. Press «Next» button in the «Smart Call» application;
6. Enable «Next step» switch then press «Next» button;



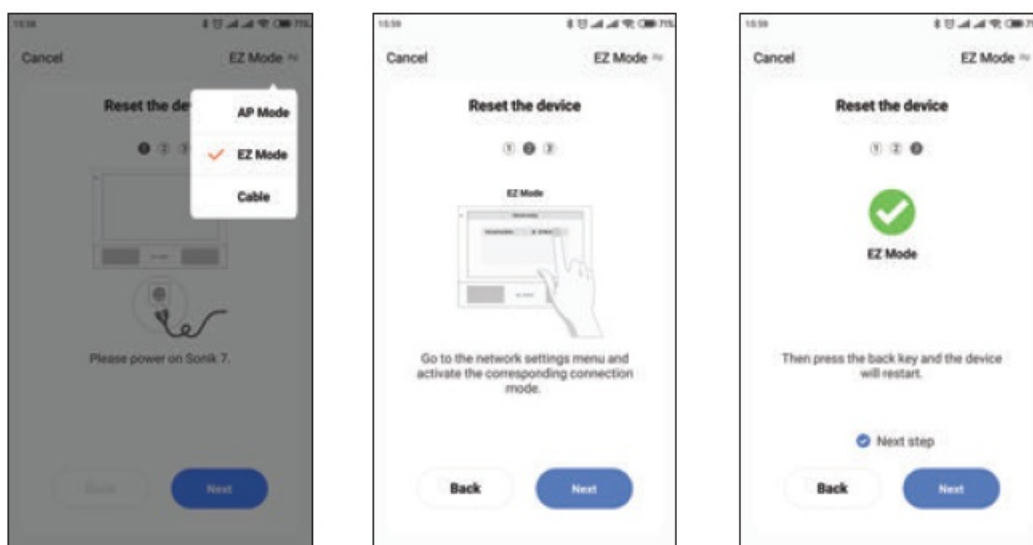
7. Enter Wi-Fi network name, the converter will be connected to, and network password. Then press «Next» button to go to the next step;
8. Press «Go to connect» button and manually connect mobile phone to the Wi-Fi hotspot of the converter. Wi-Fi hotspot name is «SmartLife-xxxxxx». Password: 12345678;
9. When mobile phone is connected to the Wi-Fi hotspot, come back to the mobile application. The converter will be connected to the Wi-Fi network, specified on the 7-th step and paired to the current account of the «Smart Call» application.

If current device is already paired to some account in the «Smart Call» application, then it is impossible to add this device to any other account. To add this device to some other account delete this device in the account, it is currently connected to!

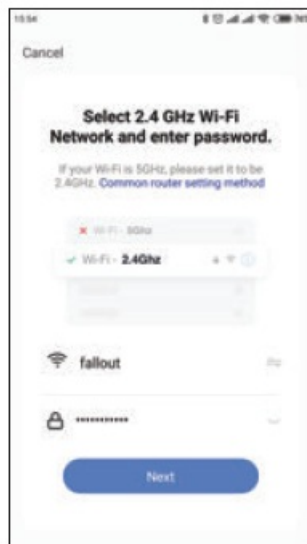


Wireless Wi-Fi network connection steps in EZ mode

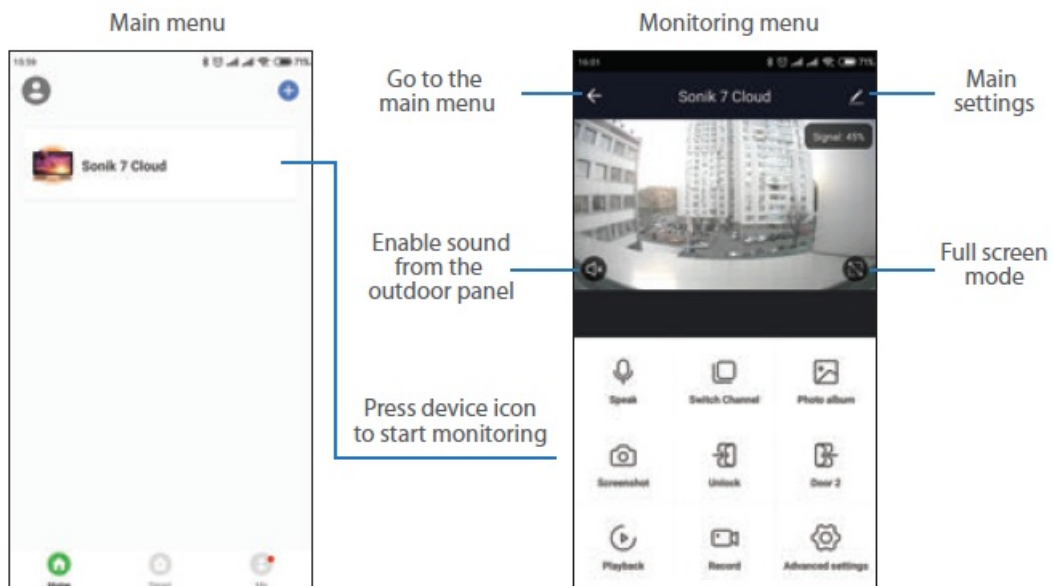
1. Connect mobile device into the same Wi-Fi network you want to connect the converter;
2. Disable 3G/4G internet connection on your mobile device;
3. Press «Add device» button and choose device model for connection. Then choose «EZ mode» connection type in the upper right corner of the screen;
4. Turn on the converter power and press «Next» button in the application;
5. On the converter shortly press «EZ» button on the right side of the case and wait for device reboot. After reboot «EZ mode» LED will become active on the front panel. Press «Next» button in the «Smart Call» application;

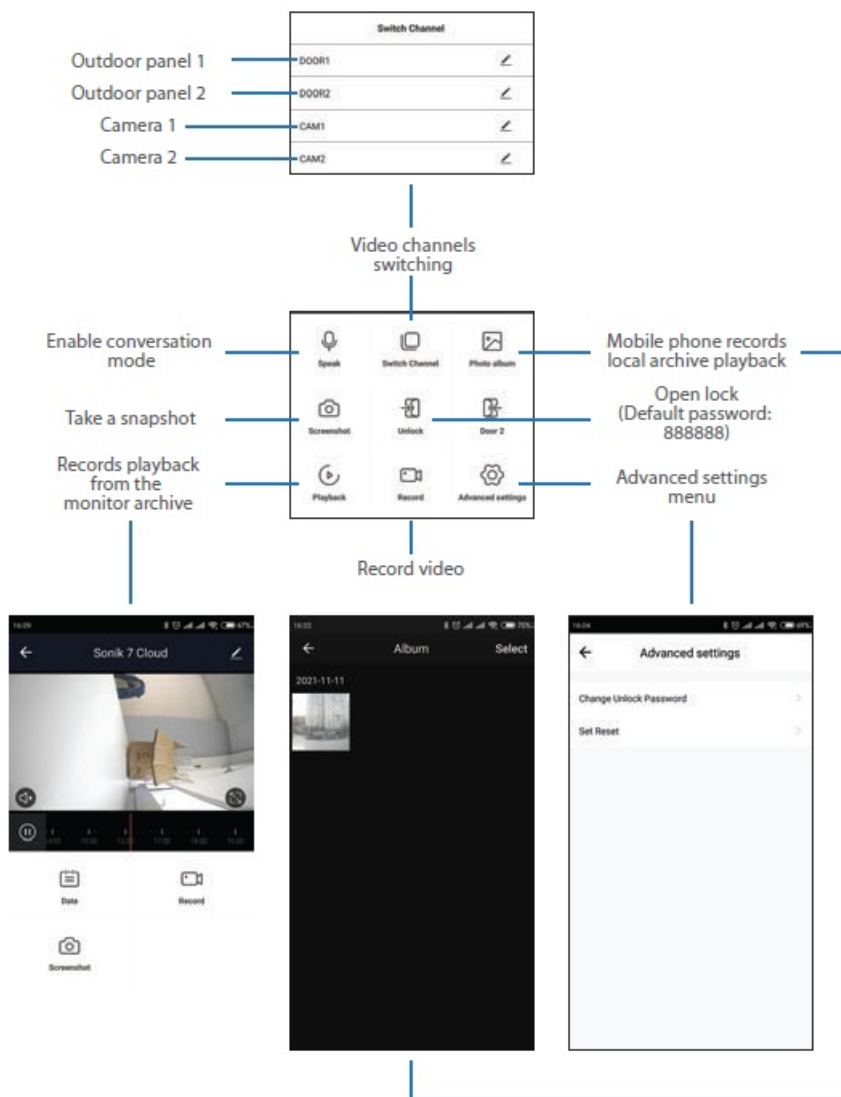


6. Enable «Next step» switch then press «Next» button;
7. Enter Wi-Fi network name, the converter will be connected to, and network password. Then press «Next» button to go to the next step;
8. The converter will be connected to the Wi-Fi network, specified on the 7-th step and paired to the current account of the «Smart Call» application.




Operation

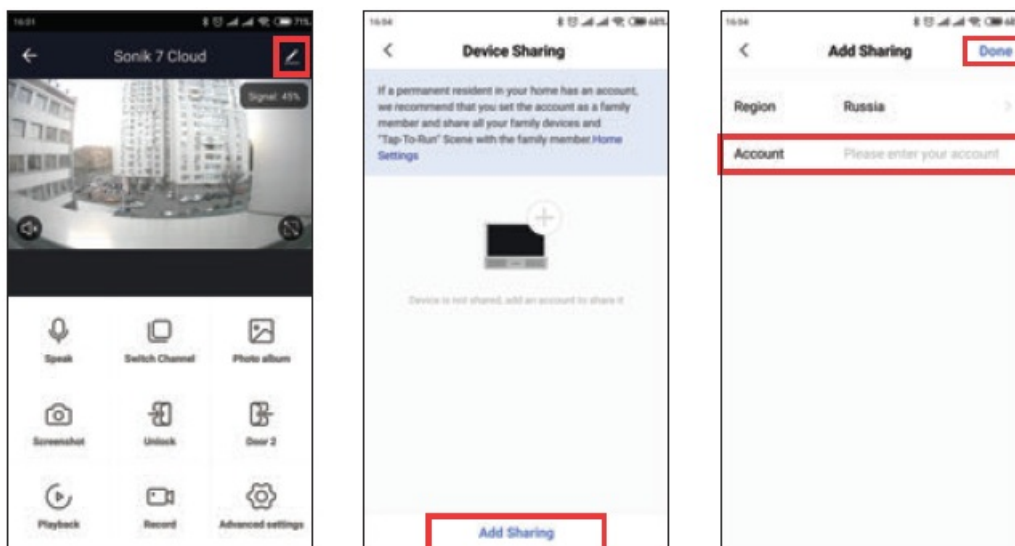




Sharing with the other devices

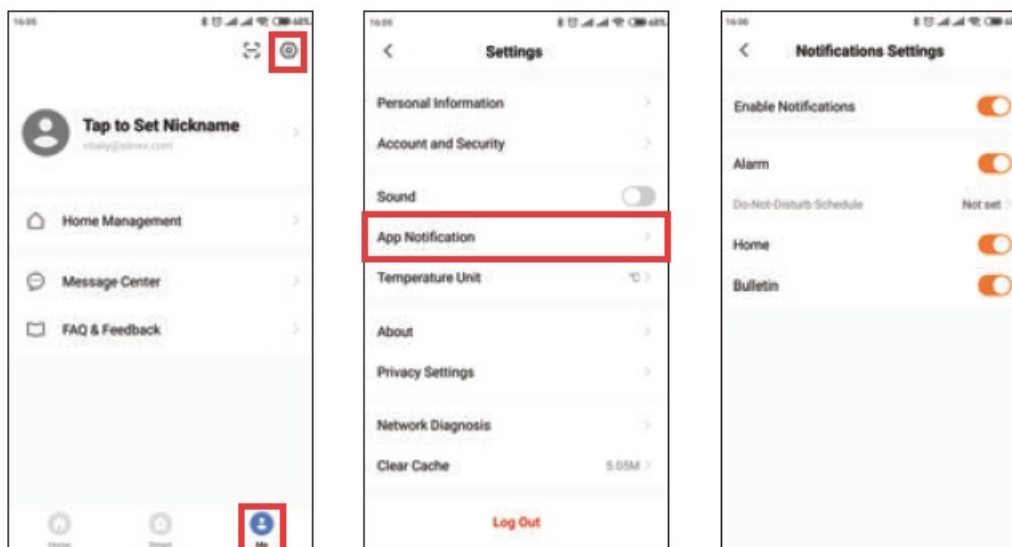
The account, device is added for the first time, is master account. This account has master permissions and can change all the settings. If several mobile phones are going to be used with the same device then personal account must be created on every mobile phone. Here are the steps to add the same device on several mobile phones:

1. Create an account on the first mobile phone application and add your device. Account on this mobile phone will be the master account for this device;
2. Install «Smart Call» application on every mobile phone that is going to be used and create its own account in every application. Every mobile phone must use it's own account in the application;
3. Using master account enter device monitoring screen, press  icon on the right upper corner of the screen and enter «Add sharing» menu. Enter account name, used on the shared device and press «Done» button on the right upper corner of the screen. Shared account must be added to the sharing list. It means that the user on the shared mobile phone now have an access to this device;
4. In the same manner add all other mobile devices into sharing list.

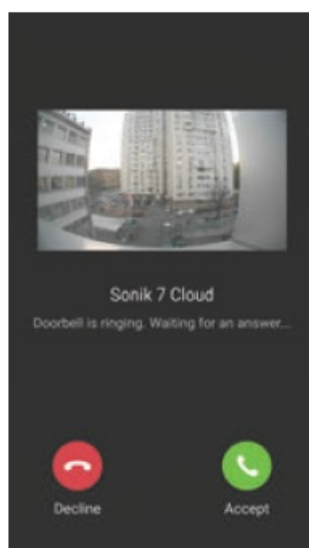


Notification messages

Press «Me» bookmark on the bottom of the main screen, then press icon on the right upper corner of the screen and enter «App Notification» menu. Here you can enable or disable notification messages from the application.



Press «Accept» button to start conversation with the visitor or «Decline» to hang up incoming call.



Limited warranty

Manufacturer guarantees product normal functioning during the warranty period if the user keeps all safety

instructions described in that manual.

Warranty period is 12 months from the moment of the product purchasing (warranty period could be extended up to 24 months or more, depending on the local regulations). Warranty period allows user to make guarantee repair in cases when normal functioning of the product was violated by the fault of manufacturer and the user has not offend transporting, installation and working conditions.

This limited warranty does not cover any damage to the product that results from improper installation, accident, abuse, misuse, natural disaster, insufficient or excessive electrical supply, abnormal mechanical or environmental conditions, or any unauthorized disassembly, repair or modification.

Warranty void in such cases:

- the product was damaged by the fault of the customer;
- the product wasn't properly installed according recommendations from the manual;
- the sticker on the backside of the product was broken;
- the product was not used for its intended function.

This limited warranty covers only repair, replacement, refund or credit for defective products, as provided above. Manufacturer is not liable for, and does not cover under warranty, any damages or losses of any kind whatsoever resulting from loss of, damage to, or corruption of, content or data or any costs associated with determining the source of system problems or removing, servicing or installing products. This warranty excludes third party software, connected equipment or stored data. Manufacturer is therefore not liable for any losses or damage attributable to third party software, connected equipment or stored data.

In the event a product has been discontinued, manufacturer shall either repair the product, offer to replace it with a comparable product or provide a refund at the lesser of the purchase price or the product's current value. Repaired or replacement products will continue to be covered by this limited warranty for the remainder of the original warranty term.

Technical Support

If you encounter any issues or have questions regarding the product, contact technical support for assistance.



Documents / Resources



[SLINEX XR-40IPHD IP Converter for Intercom](#) [pdf] User Manual
XR-40IPHD IP Converter for Intercom, XR-40IPHD, IP Converter for Intercom, for Intercom

References

- [S Video intercoms Slinex - official website](#)