




SLINEX SM-07 Video Intercom User Manual

[Home](#) » [SLINEX](#) » SLINEX SM-07 Video Intercom User Manual 

Contents

- 1 SLINEX SM-07 Video Intercom
- 2 Product Information
 - 2.1 Design. Uniqueness. Innovations
- 3 Package Contents
- 4 Safety Instructions
- 5 Installation
 - 5.1 Cable Requirements
- 6 Schematic Diagrams
- 7 Unit Mount
- 8 Usage Instructions
 - 8.1 Incoming Call
- 9 Specification
- 10 Description
- 11 Installation
- 12 Operation
- 13 Limited warranty
- 14 Documents / Resources
 - 14.1 References
- 15 Related Posts

SLINEX

SLINEX SM-07 Video Intercom



Product Information

Design. Uniqueness. Innovations

The SM-07 is an indoor monitor with a 7-inch color TFT screen and half-duplex audio type. It has a video system that supports PAL/NTSC and a call duration of 120 seconds. The device is designed for surface mount installation and has a standby mode power consumption of 2.5W and a working mode power consumption of 6W.

Package Contents

- SM-07 indoor monitor – 1 pc.
- Wall mounting bracket – 1 pc.
- Connection wires – 1 pkg.
- Mounting screws and anchors – 1 pkg.
- User manual – 1 pc.

Safety Instructions

Do not throw away the device with other industrial or nutritive trash if you see that symbol. Some regions have separation and recycling systems for electronic equipment. Connect with local authorities to receive information about recycling electronic equipment for your region. Read and keep that manual. The device installation process should be carried out by the qualified specialists. Use the device from -10°C to $+55^{\circ}\text{C}$, always keep it within that temperature range. Installation surface should be free from vibration and impact influence. Keep this device far from open sources of heat, such as radiators, heaters, and ovens. The device can be installed near other electronic equipment in case if the temperature of the environment does not exceed previously mentioned range. The device should be protected from the direct influence of the natural phenomena, such as direct sunlight, rain or snow. Don't use aggressive or abradant detergent for the device surface cleaning. Use soft wet cloth or tissue to remove strong dirt. Don't overpower outlets. It can cause fire or electric shock.

Nature protection

Don't throw away the device with other industrial or nutritive trash if you see that symbol. Some regions have

separation and recycling systems for the electronic equipment. Connect with local authorities to receive information about recycling of electronic equipment for your region.

Rights and limitation of liability

All rights reserved. Any part of that document can not be published in any form, translated into other languages or reproduced in any way including electronic or mechanical. Document recording and copying is strictly denied without owner permission

Installation

Cable Requirements

Disconnect all power cables before device installation. The cable type used for device connection depends on the distance between the last indoor monitor in the system and outdoor panel:

Distance	Cable Type
0-50m (0-164ft)	Shielded Power Audio Ground Video Cable
50-80m (164-262ft)	Shielded Power Audio Ground Video Cable
80-100m (262-328ft)	3-wire cable with 0.75mm (AWG 18) square of one wire and RG-59 or RG-6 coaxial cable for the video signal

Schematic Diagrams

Refer to Diagram 1 in the user manual for SM-07 monitor, outdoor panels, and locks connection.

Unit Mount

1. Take the surface mount bracket from the kit and place it 150-160cm from the floor line.
2. Mark and drill four holes in the wall.
3. Take four nuts from the kit and hammer them into the drilled holes.
4. Fix surface mount bracket on the wall by four screws from the kit.
5. Connect all communication wires and fix the monitor on the surface mount bracket.

Usage Instructions

Incoming Call

In standby mode, when a visitor presses the call button on the first door panel, the SM-07 indoor monitor will receive an incoming call.

Attention!

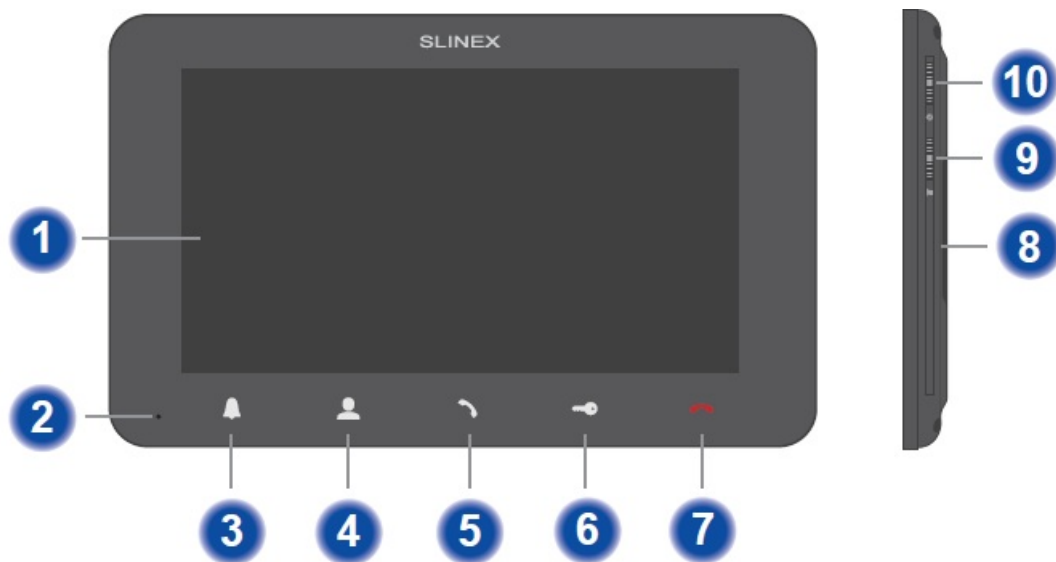
As a result of continuous upgrades and functionality improvements, technical characteristics of the device can be changed without any preliminary declaration. This manual can contain some inaccuracy or misprint. The owner reserves the right to make corrections to the information described in the user manual and device package. The last revision of this manual is available on www.slinex.com

Specification



- SCREEN 7", color TFT
- RESOLUTION 1024×600 px.
- VIDEO SYSTEM PAL / NTSC
- AUDIO TYPE Half duplex
- CALL DURATION 120 seconds
- MOUNTING TYPE Surface mount
- STANDBY MODE POWER CONSUMPTION 2.5 W
- WORKING MODE POWER CONSUMPTION 6 W
- POWER SUPPLY Built-in power supply, ~100–240 V
- DIMENSIONS 193×123×18 mm (7.60×4.84×0.71")
- WORKING TEMPERATURE 10 ... +55 °C (+14...+131 °F)

Description



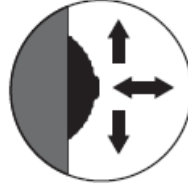
1. Display;
2. Microphone;
3. «Ringtone» button – press this button to change the ringtone (16 ringtones are available);
4. «Monitor» button – door panel or camera image monitoring;
5. «Answer» button – incoming call answer and start conversation with the visitor;
6. «Unlock» button – door unlocking;
7. «Hang Up» button – stop conversation with the visitor / settings menu exit;
8. Speaker;

9. Volume joystick

move the joystick up or down during intercom or conversation to increase or decrease monitor speaker volume

10. Settings joystick :

1. press the joystick while monitoring or talking to enter brightness/contrast/chroma settings. Change current parameter by pressing joystick again;
2. move joystick up or down to change current parameter value.



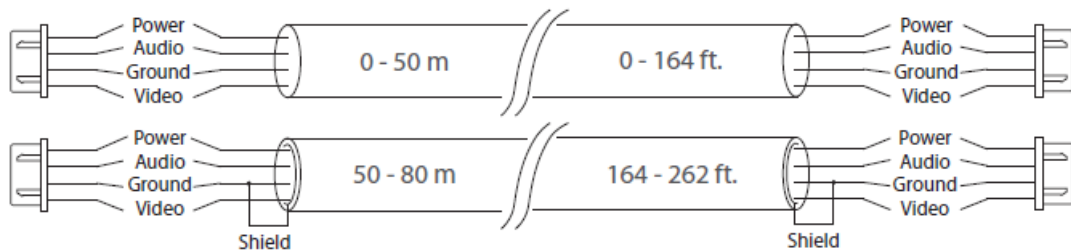
Installation

Cable requirements

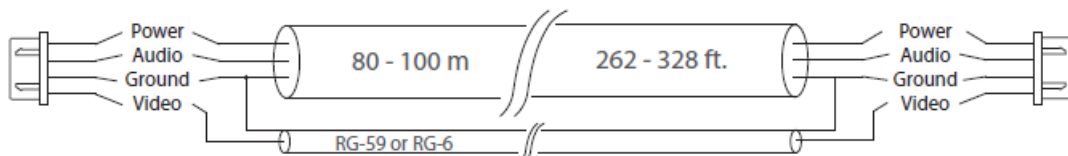
Disconnect all power cables before device installation. cable type that is used for device connection depends on the distance between the last indoor monitor in the system and outdoor panel:

1. Use 4-wire cable with such parameters:

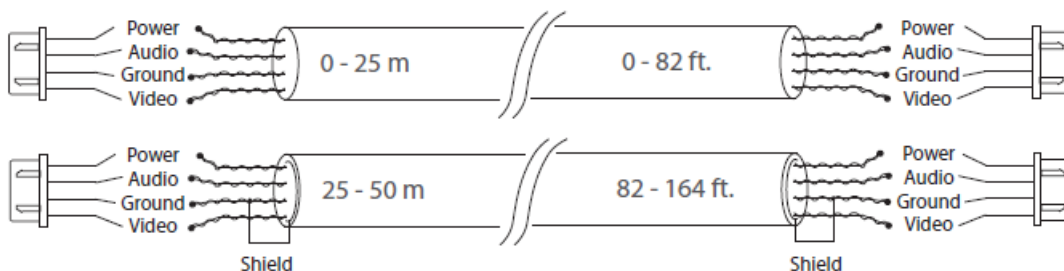
1. distance up to 25 meters (82 ft.) use a cable with 0,22 mm square of one wire (AWG 24);
2. distance 25 to 50 (82-164 ft.) meters use a cable with 0,41 mm square of one wire (AWG 21);
3. distance 50 to 100 meters (164-328 ft.) use a cable with 0,75 mm square of one wire (AWG 18).



2. If the distance between door monitor and door panel is between 80 and 100 meters (262-328 ft.) then use a 3-wire cable with 0,75 mm (AWG 18) square of one wire and RG-59 or RG-6 coaxial cable for the video signal.

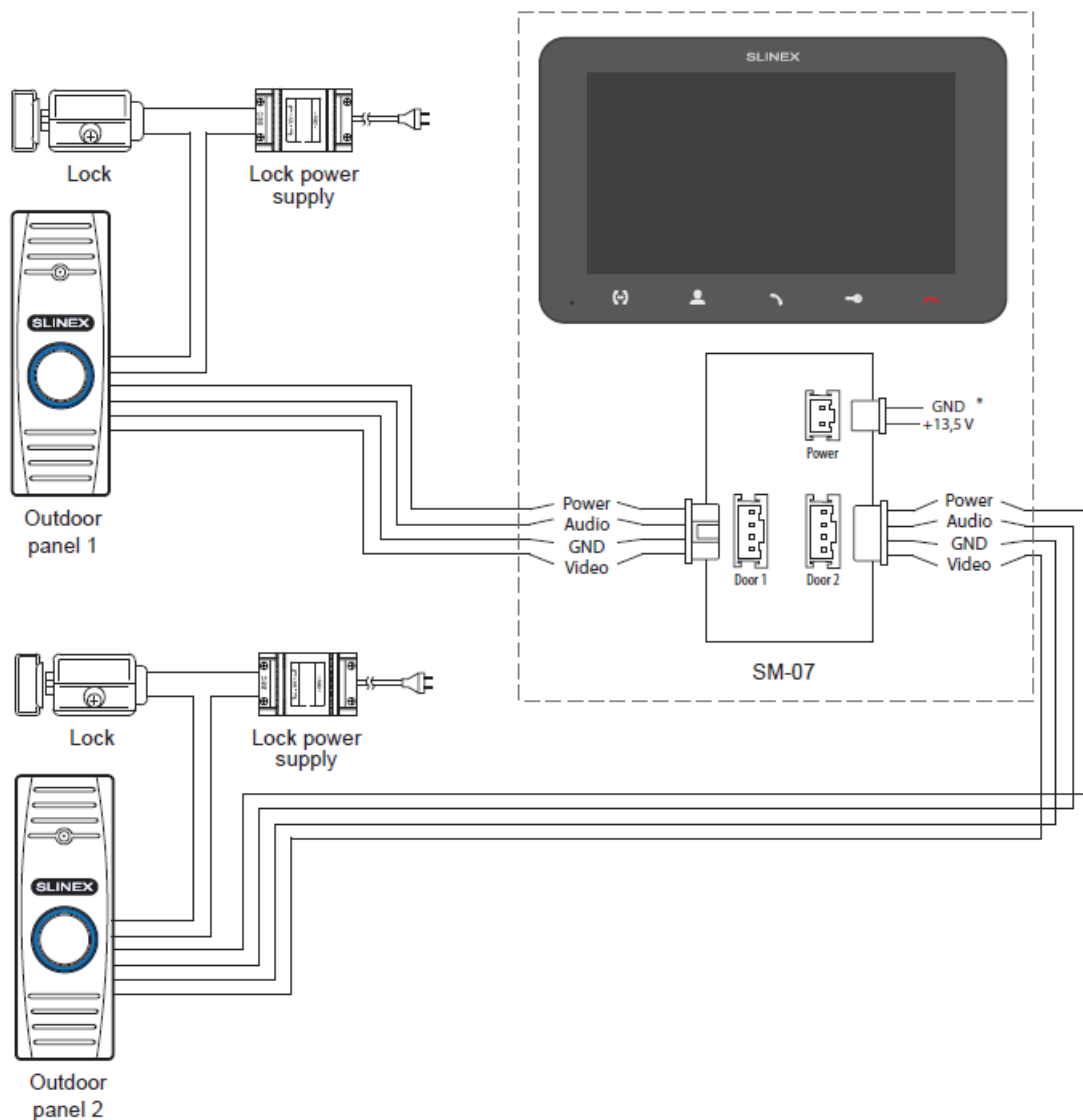


3. Shielded or non-shielded twisted pair (not recommended): distance up to 25 meters (82 ft.) non-shielded twisted pair can be used;



Schematic diagrams

Diagram 1. SM-07 monitor, outdoor panels and locks connection

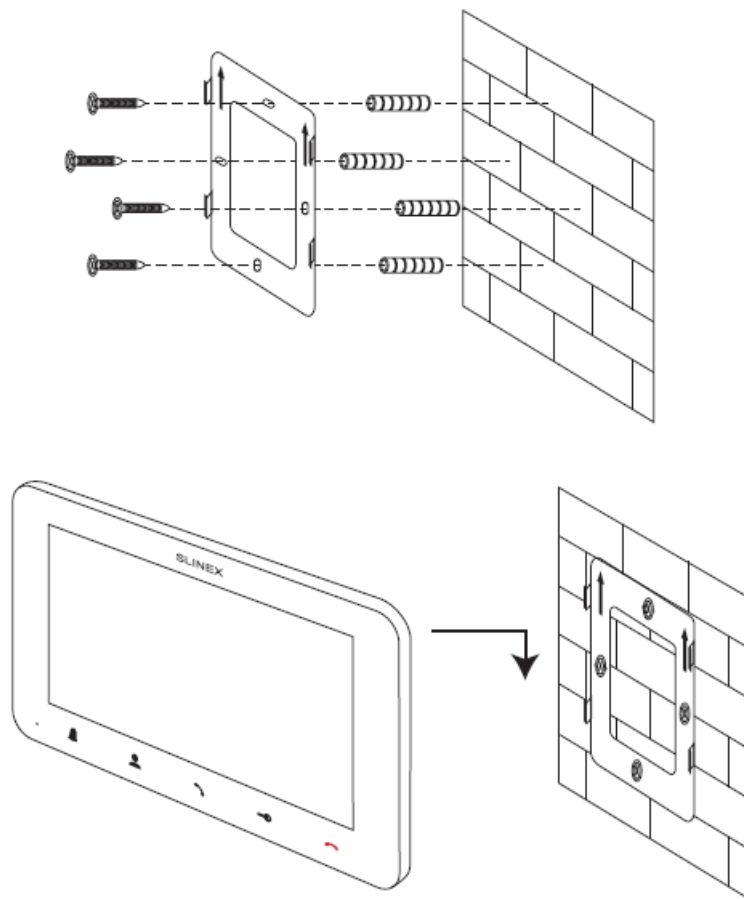


Notes:

- Use «Power» connector on the monitor to connect external power supply +13,5 V. While use external power supply please keep main power cord ~100-240 V disconnected from the outlet, otherwise it can damage monitor circuits.
- Outdoor panels, power supplies and locks displayed on the scheme are optional devices and aren't included into monitors kit.

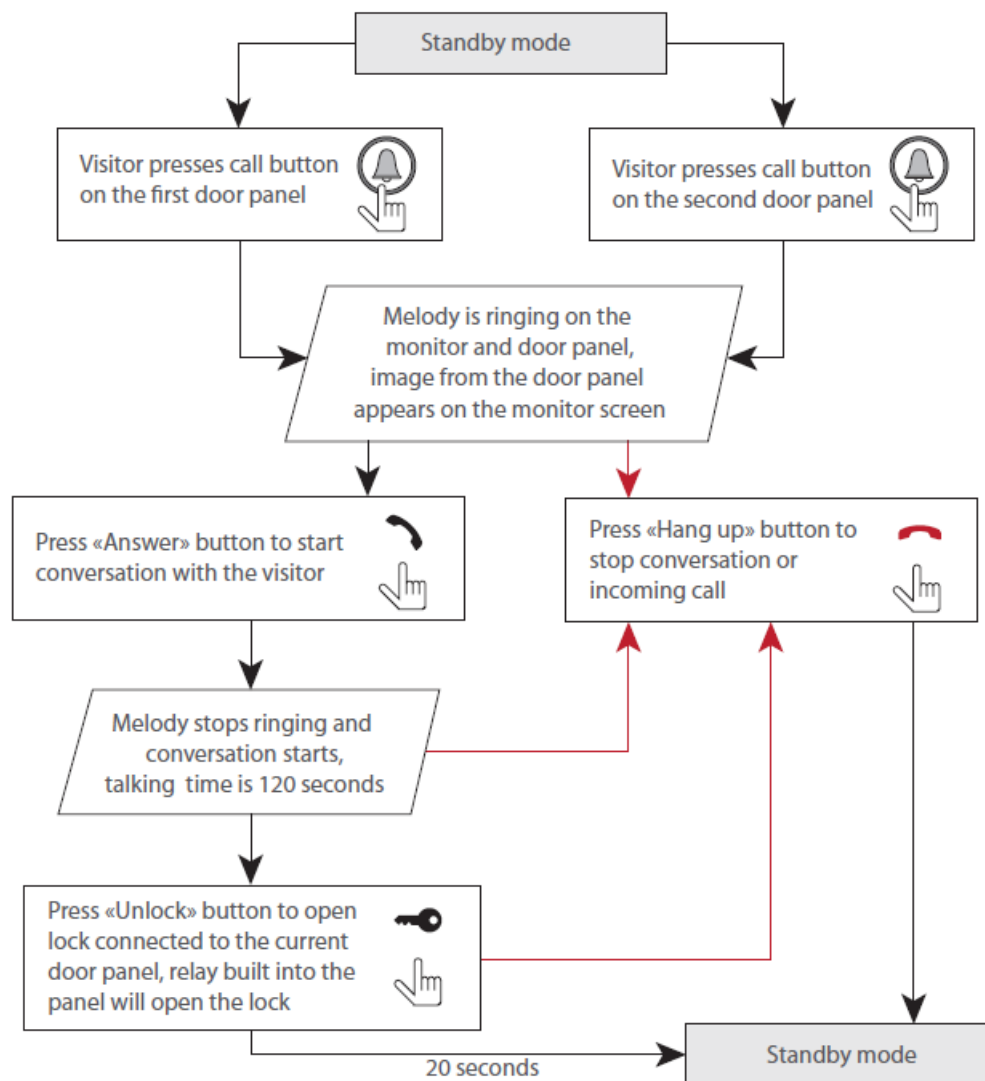
Unit mount

1. Take the surface mount bracket from the kit and place it 150-160 cm from the floor line;
2. Mark and drill four holes in the wall;
3. Take four nuts from the kit and hammer them into the drilled holes;
4. Fix surface mount bracket on the wall by four screws from the kit;
5. Connect all communication wires and fix the monitor on the surface mount bracket.




Operation

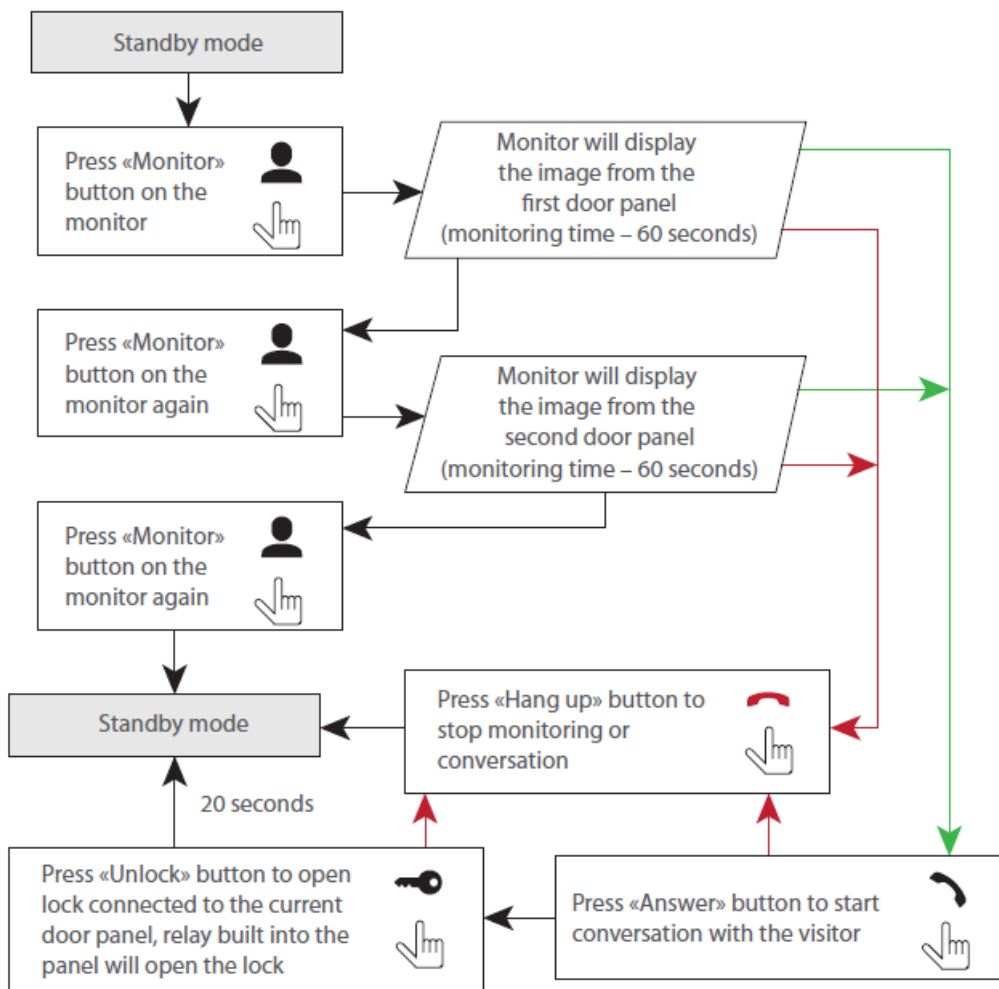
Incoming call




Notes:

1. Monitor will be automatically switched into standby mode if the user doesn't answer incoming call during 60 seconds;
2. Image and sound from the door panel will be active during 20 seconds after the moment user presses  button. It let the user know if the visitor passed through the door.

Outdoor panels monitoring



Notes:

If someone press call button on the door panel while monitoring is active then the image from this door panel appears on the monitor screen and call melody starts. Press «Answer»  button to start conversation.

Limited warranty

Manufacturer guarantees product normal functioning during the warranty period if the user keeps all safety instructions described in that manual. Warranty period is 12 months from the moment of the product purchasing (warranty period could be extended up to 24 months or more, depending on the local regulations). Warranty period allows user to make guarantee repair in cases when normal functioning of the product was violated by the fault of manufacturer and the user has not offend transporting, installation and working conditions. This limited warranty does not cover any damage to the product that results from improper installation, accident, abuse, misuse, natural disaster, insufficient or excessive electrical supply, abnormal mechanical or environmental conditions, or any unauthorized disassembly, repair or modification. Warranty void in such cases

- the product was damaged by the fault of the customer;
- the product wasn't properly installed according recommendations from the manual;
- the sticker on the backside of the product was broken;
- the product was not used for its intended function.

This limited warranty covers only repair, replacement, refund or credit for defective products, as provided above. Manufacturer is not liable for, and does not cover under warranty, any damages or losses of any kind whatsoever resulting from loss of, damage to, or corruption of, content or data or any costs associated with determining the source of system problems or removing, servicing or installing products. This warranty excludes third party software, connected equipment or stored data. Manufacturer is therefore not liable for any losses or damage

attributable to third party software, connected equipment or stored data. In the event a product has been discontinued, manufacturer shall either repair the product, offer to replace it with a comparable product or provide a refund at the lesser of the purchase price or the product's current value. Repaired or replacement products will continue to be covered by this limited warranty for the remainder of the original warranty term.

Technical support



Documents / Resources

	<p>SLINEX SM-07 Video Intercom [pdf] User Manual SM-07 Video Intercom, SM-07, Video Intercom, Intercom</p>
---	--

References

- [S Video intercoms Slinex - official website](#)