

Contents [[hide](#)]

- [1 slime Tube Patch Kit](#)
- [2 PRODUCT USAGE INSTRUCTION](#)
- [3 MORE INFO](#)
- [4 Documents / Resources](#)
 - [4.1 References](#)

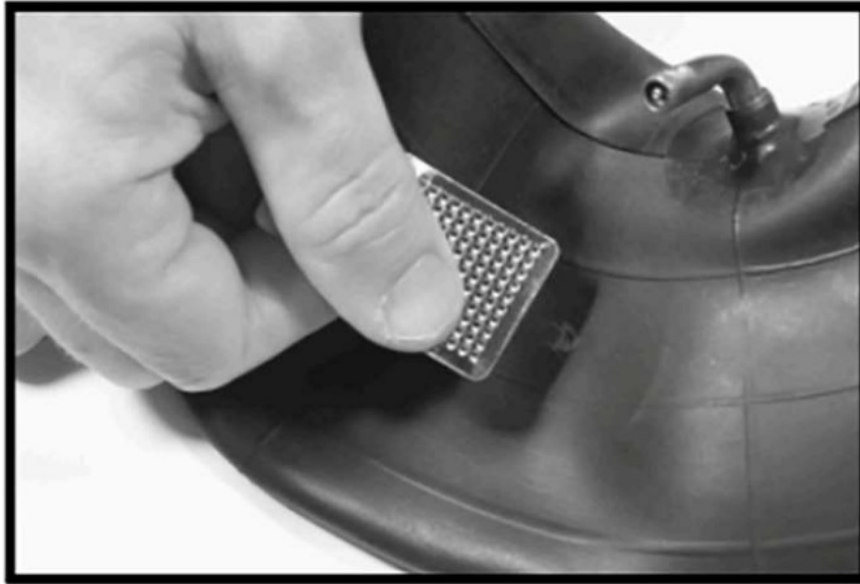


slime Tube Patch Kit



PRODUCT USAGE INSTRUCTION

- **STEP 1**



- Use the scuffer to lightly scuff the area around the puncture.
- The area to be covered by the patch should feel rough to the touch.

- **STEP 2**



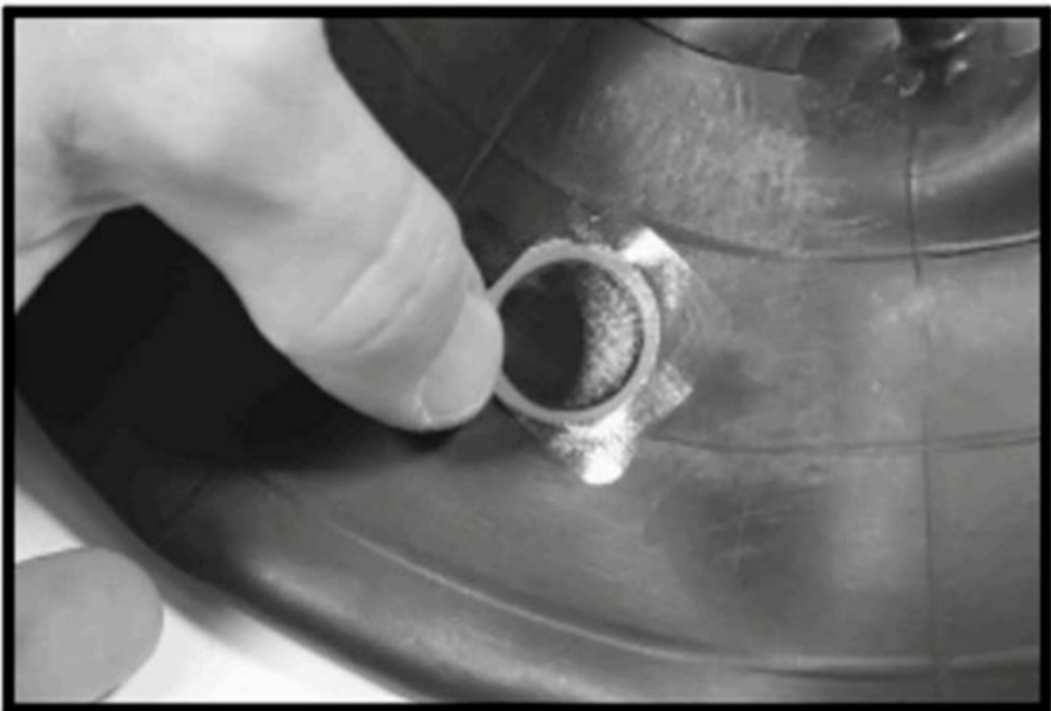
- Apply rubber cement onto the roughened surface.
- Gently work the rubber cement into the tube, spreading it evenly and scraping off any excess.

- **Step 3**



- Remove the foil backing from the patch without touching the sticky surface.

- **Step 4**



- Apply the patch (sticky side down) centered over the puncture and press firmly, especially around the edges.

- **Step 5**




- Remove the clear plastic film and wait for the rubber cement to fully dry before reinflating your tube to the recommended pressure.

MORE INFO



Documents / Resources

	<p>slime Tube Patch Kit [pdf] Instructions</p> <p>Tube Patch Kit, Patch Kit</p>
---	---

References

- [User Manual](#)

Leave a comment

Your email address will not be published. Required fields are marked *

Comment *

Name

Email

Website

☐ Save my name, email, and website in this browser for the next time I comment.

Post Comment

Search:

e.g. whirlpool wrf535swhz

Search

[Manuals+](#) | [Upload](#) | [Deep Search](#) | [Privacy Policy](#) | [@manuals.plus](#) | [YouTube](#)

This website is an independent publication and is neither affiliated with nor endorsed by any of the trademark owners. The "Bluetooth®" word mark and logos are registered trademarks owned by Bluetooth SIG, Inc. The "Wi-Fi®" word mark and logos are registered trademarks owned by the Wi-Fi Alliance. Any use of these marks on this website does not imply any affiliation with or endorsement.