



Slim Mechanical SM1 Backlit Bluetooth Keyboard User Guide

[Home](#) » [Slim Mechanical](#) » Slim Mechanical SM1 Backlit Bluetooth Keyboard User Guide 

Contents

- [1 Slim Mechanical SM1 Backlit Bluetooth Keyboard](#)
- [2 Specifications](#)
- [3 Product Usage Instructions](#)
- [4 USING INSTRUCTION](#)
- [5 FAQ](#)
- [6 Documents / Resources](#)
 - [6.1 References](#)

Slim Mechanical

Slim Mechanical SM1 Backlit Bluetooth Keyboard



Specifications

- **Product Name:** SM1 Slim Mechanical Backlit BluetoothKeyboard
- **Connection:** Bluetooth 5.0, 2.4GHz USB-A wireless receiver
- **Charging Port:** USB-C

- **Backlight:** Yes
- **Compatibility:** Windows, macOS
- **Battery Life:** Up to XX hours
- **Switches:** Non-hot-swappable

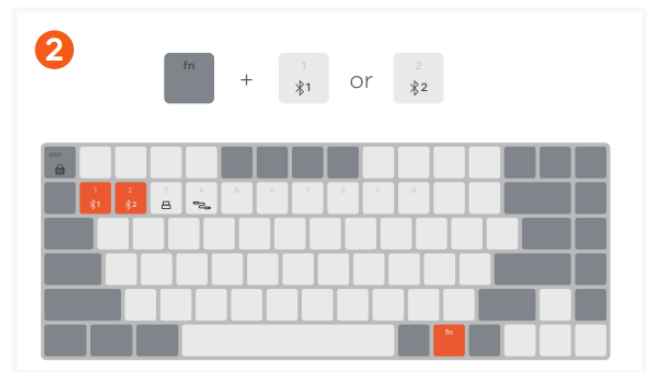
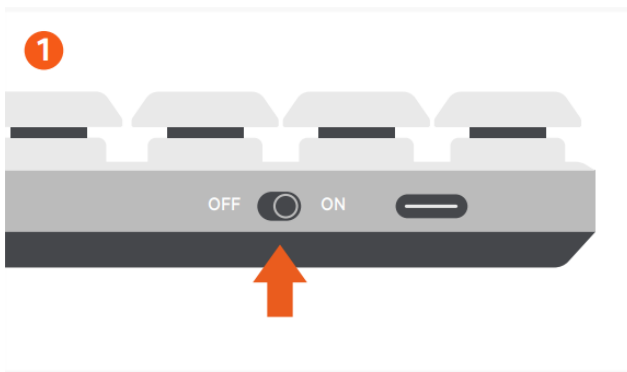
Product Usage Instructions

- **Turning On and Pairing via Bluetooth**
 - Turn on the keyboard by moving the switch on the top to the 'ON' position.
 - Press and hold the FN key and one of the Bluetooth keys (1 or 2) simultaneously for about 5 seconds until the LED blinks.
 - Select 'Slim SM1 Keyboard' or 'Bluetooth Device' on your host device's Bluetooth settings to complete the pairing process.
- **Connecting via USB Receiver or Wired Mode:**
 - Connect the included 2.4GHz USB-A wireless receiver to an available port on your computer.
 - Press FN + 3 to connect wirelessly via the USB-A receiver.
 - To use in wired mode, connect the USB-C cable to a host device port and press FN + 4. The keyboard will charge simultaneously in wired mode.
- **Charging and Battery Indicator:**
 - The power indicator on the space bar will flash red when the battery is low.
 - Recharge by connecting the keyboard to a powered USB-C port using the included cable. Charge for 2-3 hours or until the red light turns off.
- **Function Key Lock and OS Switching:**
 - Press FN + Esc to activate the function key lock and swap between Media and Function keys (F1-F12).
 - Press FN + O for macOS functions, or FN + P for Windows functions.
- **Power Saving Features:**
 - After 1 minute of inactivity, the backlight will turn off with a wireless connection.
 - After 30 minutes of inactivity, the keyboard will enter sleep mode to conserve battery life. Press any key to wake up and automatically reconnect.

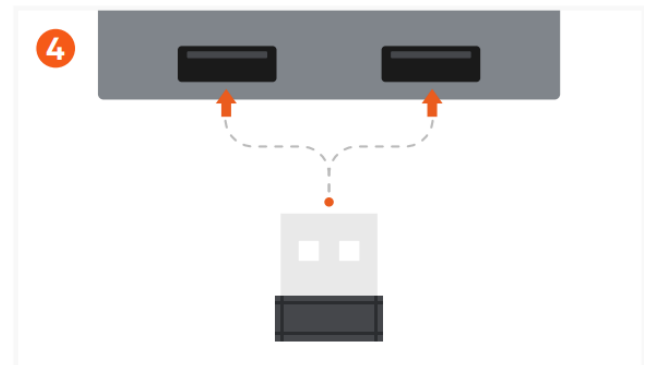
USING INSTRUCTION

Note: Switches are not hot-swappable.

- Turn on the keyboard by moving the switch on the top of the keyboard to the "on" position. The last connection source key should illuminate
- Press and hold the FN key and one of the Bluetooth keys ("1" or "2") for ~5 seconds, until the LED starts to blink.



- Select “Slim SM1 Keyboard” or “Bluetooth Device” on the host device’s Bluetooth settings to complete the pairing process.
Repeat for connecting up to two devices via Bluetooth.
- Connect the included 2.4GHz USB-A wireless receiver to an available USB-A port on your computer, adapter, hub, or dock.



- Press “FN + 3” to connect the keyboard to your host device wirelessly via the USB-A receiver.
The keyboard can be used in wired mode by pressing “FN + 4” while the USB-C cable is connected to a host device port.
- In wired mode, the keyboard will charge simultaneously



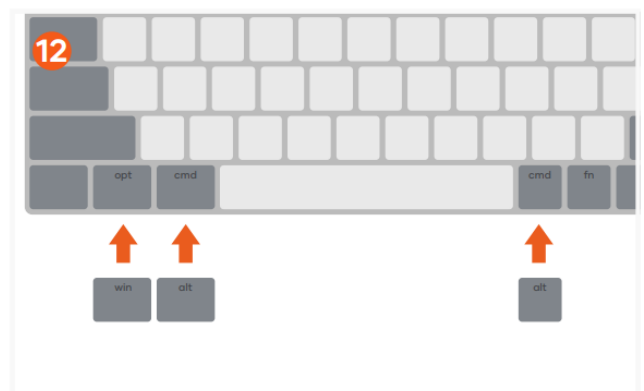
- Power indicator on the space bar will flash red when on a low battery.
- To recharge, connect the keyboard to a powered USB-C port using the included cable.
Charge for 2-3 hours or until the red light turns off.



- Press “FN + Esc” to activate the function key lock and swap between the Media and Function keys (F1-F12). Esc key will flash when the function lock is enabled.
- Press “FN + O” to change the keyboard to macOS functions.



- Press “FN + P” to change to Windows functions.
- When using Windows you can swap the OPT and both keys with the included Win & Alt keys. Lift the macOS keycaps straight up and push Windows keycaps down into place.



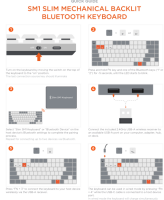
- With a wireless connection, after 1 minute of inactivity, the backlight will turn o. After 30 minutes, the keyboard will enter sleep mode to help conserve battery life. Press any key to wake and the keyboard will automatically reconnect.
- Switches are not hot-swappable.

FAQ

Frequently Asked Questions

- **Q: How do I know if the keyboard is low on battery?**
 - A: The power indicator on the space bar will flash red when the battery is low.
- **Q: How can I switch between macOS and Windows functions?**
 - A: Press FN + O for macOS functions and FN + P for Windows functions.

Documents / Resources



[Slim Mechanical SM1 Backlit Bluetooth Keyboard \[pdf\] User Guide](#)
SM1 Backlit Bluetooth Keyboard, SM1, Backlit Bluetooth Keyboard, Bluetooth Keyboard, Keyboard

References

- [User Manual](#)

[Manuals+](#), [Privacy Policy](#)

This website is an independent publication and is neither affiliated with nor endorsed by any of the trademark owners. The "Bluetooth®" word mark and logos are registered trademarks owned by Bluetooth SIG, Inc. The "Wi-Fi®" word mark and logos are registered trademarks owned by the Wi-Fi Alliance. Any use of these marks on this website does not imply any affiliation with or endorsement.