



SLAMTEC RPLIDAR S1 Low Cost 360 Degree Laser Range Scanner User Manual

[Home](#) » [SLAMTEC](#) » SLAMTEC RPLIDAR S1 Low Cost 360 Degree Laser Range Scanner User Manual 



Contents

- [1 SLAMTEC RPLIDAR S1 Low Cost 360 Degree Laser Range Scanner](#)
- [2 Overview](#)
- [3 Connection and Usage](#)
- [4 Troubleshooting](#)
- [5 SDK Introduction and Usage](#)
- [6 Operation Recommendation](#)
- [7 Revision History](#)
- [8 Documents / Resources](#)
- [9 Related Posts](#)

SLAMTEC RPLIDAR S1 Low Cost 360 Degree Laser Range Scanner



Overview

RPLIDAR S1 development kit includes the matched tools used for evaluating RPLIDAR's performance and initial development. After connecting the RPLIDAR S1 with PC via USB cable and connecting the power adapter to the USB cable, users can observe the cloud map of the environment scanning point collected by the RPLIDAR in RoboStudio and start development based on the SDK.

Items in the Development Kit

RPLIDAR Development Kit contains:

- RPLIDAR PWM motor driver embedded
- USB Adapter
- Micro-USB cable
- Power cable



Figure 1-1 Items in the RPLIDAR Development Kit

RPLIDAR S1



Figure 1-2 The RPLIDAR S1

The RPLIDAR S1 development kit contains standard RPLIDAR S1 unit. The RPLIDAR is embedded with logic IO drivable motor controller which can be used to configure the scan frequency by tuning motor speed. Developers can also choose to turn off the motor for power saving purpose.

RPLIDAR usage and interface definition will be introduced in the coming sections.

USB Adapter

The USB adapter comes with a dial switch. It can be used to switch the Baud rate from 115200 to 256000 or vice

versa. Please note that the Baud rate should be set as 256000 if the USB adapter is connected with RPLIDAR S1..



Figure 1-3 RPLIDAR Adapter

Connection and Usage

Connection

RPLIDAR A3 can be easily connected to PC according to the following steps.

1. Connect RPLIDAR S1 with the USB adapter.

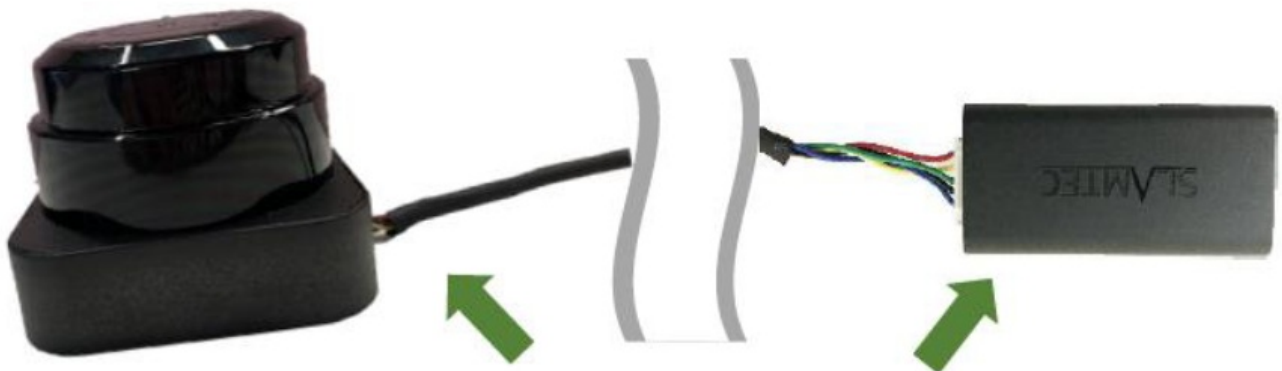


Figure 2-1 Connect RPLIDAR S1 and USB Adapter

2. Connect the USB adapter to your PC via the Micro-USB cable. If the PC is on, after connecting the USB cable to your PC and connecting the power adapter to the USB cable, the indicator light of the USB will light up but the RPLIDAR will not start scanning.



Figure 2-2 Connect the USB Adapter to PC via Micro-USB Cable

Install Driver for the USB Adapter

The USB adapter converts UART to USB by using a CP2102 chip. You need to install the device driver for the chip. The driver can be found in the provided SDK package or downloaded from Silicon Labs' official website:

<http://www.silabs.com/products/mcu/Pages/USBtoUARTBridgeVCPDrivers.aspx>

Here's the installation steps in Windows: after connecting the RPLIDAR with PC, please find the driver file "CP210x VCP Windows" and choose correct operating system version accordingly: x86 for 32-bit OS and x64 for 64-bit OS.

x64	2014/2/8 21:01	文件夹	
x86	2014/2/8 21:01	文件夹	
<input checked="" type="checkbox"/> CP210xVCPInstaller_x64.exe	2013/10/25 11:39	应用程序	1,026 KB
CP210xVCPInstaller_x86.exe	2013/10/25 11:39	应用程序	901 KB
dpinst.xml	2013/10/25 11:39	XML 文档	12 KB
ReleaseNotes.txt	2013/10/25 11:39	文本文档	10 KB
SLAB_License_Agreement_VCP_Win...	2013/10/25 11:39	文本文档	9 KB
slabvcp.cat	2013/10/25 11:39	安全目录	12 KB
slabvcp.inf	2013/10/25 11:39	安装信息	5 KB

Figure 2-3 Choose USB Adapter Driver for Installation



Figure 2-4 Start Page of USB Adapter Driver Installation

After Installing the driver according to the above installation steps, you will see corresponding serial port name in the [Control Panel] -> [Device and Printers]. Please refer to the below figure.



Figure 2-5 Recognized Serial Port Name Matched with the USB Adapter

Run Demo Application

- SLAMTEC provides a Lidars plugin in RoboStudio for users in test and evaluation. You can view the scan result directly in the UI and save the scan result to files for further processing.
- This GUI demo can only run under Windows. For Linux and MacOS users, please refer to the other simple demo provided in the SDK.
- Please make sure you have connected RPLIDAR to PC by using USB adapter and installed the device driver correctly before running the demo application in RoboStudio.
- Launch RoboStudio and log in.

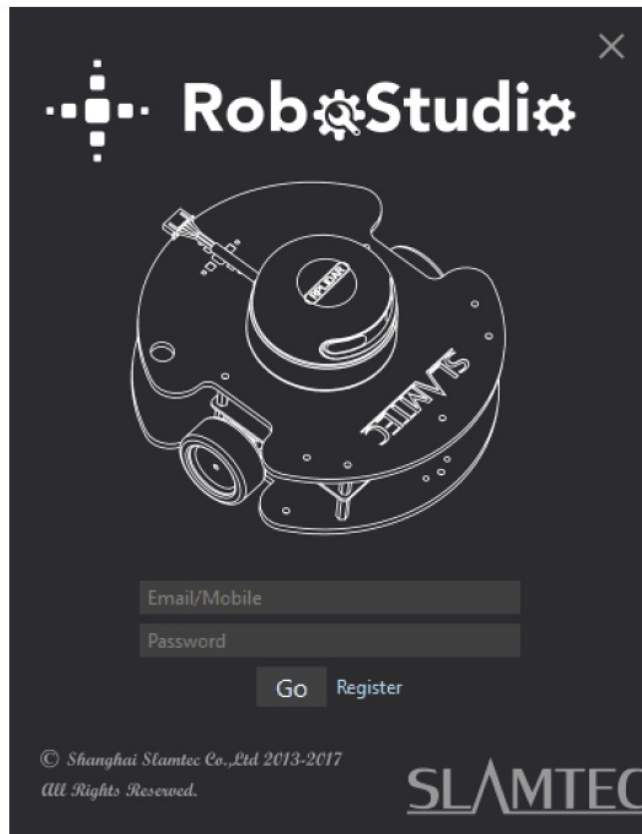


Figure 2-6 RoboStudio Login Page

If the connection is ok, you shall see the user interface is shown as below.

1. Click **File->Lidars** to open the lidar control panel in the left;
2. Click **Serial Ports** to extend the lidar lists and you'll find the RPLIDAR A3 previously connected to your PC;
3. Click the RPLIDAR A3 icon to extend the tool buttons below the icon: the left one is to adjust the motor speed while the right one is to open the tool bar in the major work area as shown in Figure 2-7.

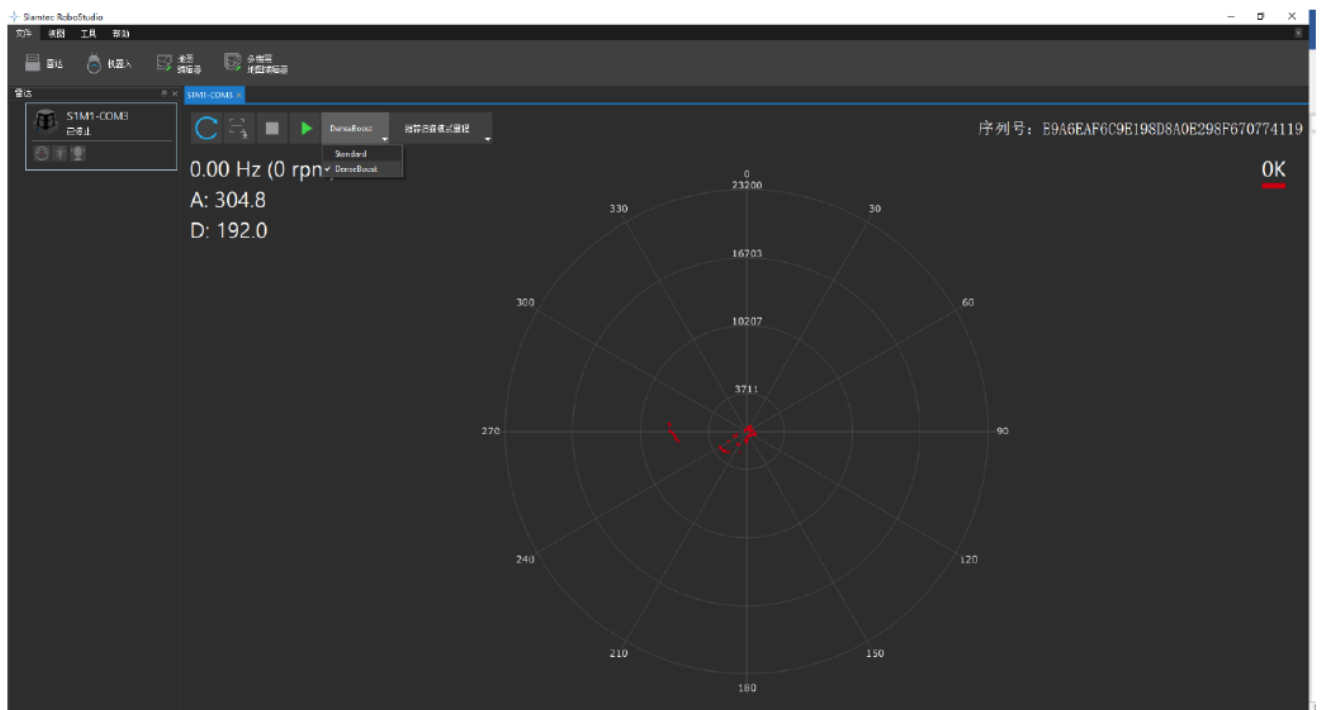


Figure 2-7 The Lidar Plugin in RoboStudio

The serial number, version and model of the RPLIDAR S1 will show next with its icon in the lidar control panel. The supported commands of RPLIDAR are showed in the tool bar. The descriptions are listed in the bellow table.





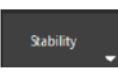


Button	Function	Description
	Restart RPLIDAR	Restart scan core to clear internal errors
	Save Scan Data	Save current scan data to the local file
	Stop Scan	Scan core enter power save mode
	Start Scan	Scan data will be displayed after scan core starting work
	Work Mode Switch	Switch among different work modes to fit in specific environments
	Adjust Motor Speed	Adjust the motor speed as required

Figure 2-8 The Supported Commands of RPLIDAR in RoboStudio

Press the Start Scan button  the scan data will be displayed as below(by default, the motor rotating speed should be about 10Hz.):

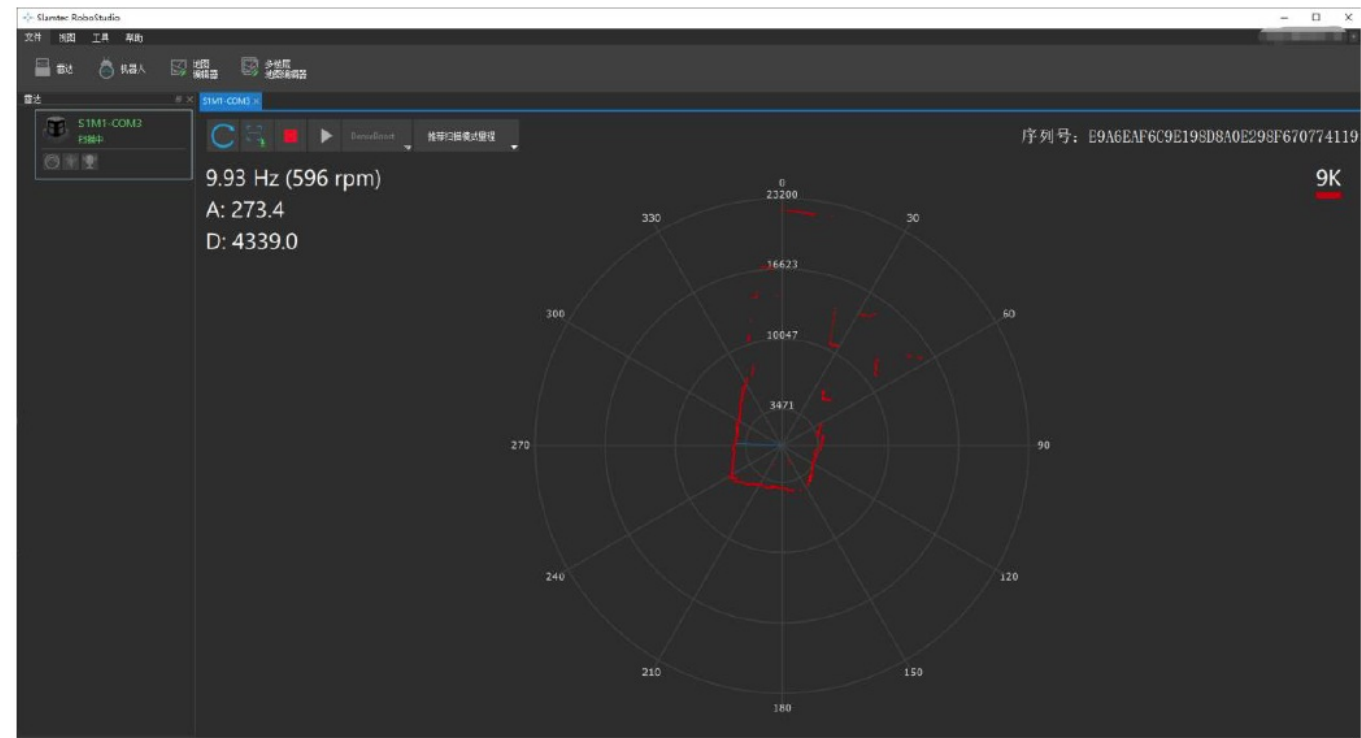



Figure 2-9 The Scan Outline by RPLIDAR in RoboStudio

Right click in the major working area to choose a range so as to zoom in or out the view. The scan frequency is also showed in the above interface.

Troubleshooting

When the scan core or the laser power works abnormally, the scan core will enter protection mode. This state can be retrieved via SDK API. If such scenario happened, please send restart command  to reset the scan core.

Motor Speed Adjustment



During the running process, different motor rotating speed can be achieved by pressing the button, which can fit in different working environments or meet specific requirements. There will be a speed adjustment dialog box and dash board popped up for users to enter required speed. After entering a value, the motor will work as the settled rotating speed automatically. User can also drag the sliding handle to the required rotating speed. The current actual rotating speed will show in the upper left corner of the major work area. For instance, the actual rotating speed in the following screenshot is 11.88

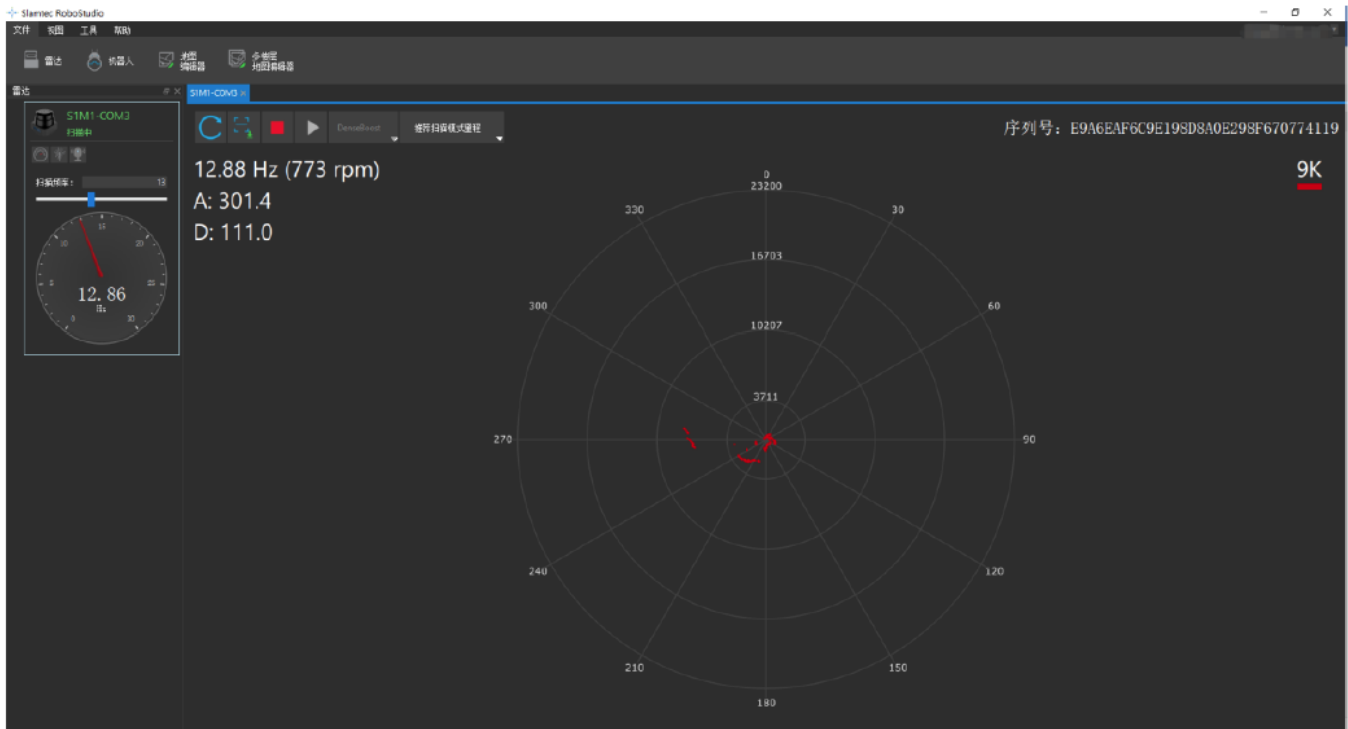


Figure 2-10 The Motor Speed Adjustment Dialogue of RPLIDAR in RoboStudio

SDK Introduction and Usage

RPLIDAR S1 Pin Definition and Specification

The standard RPLIDAR S1 uses SH1.0-6P female receptacle and interface lead as communication interface. A Cable will be provided. One end of the cable uses a SH1.0-6P male socket. The other end of the cable uses the XH2.54-5P male socket. The detailed pin definition is shown as below:

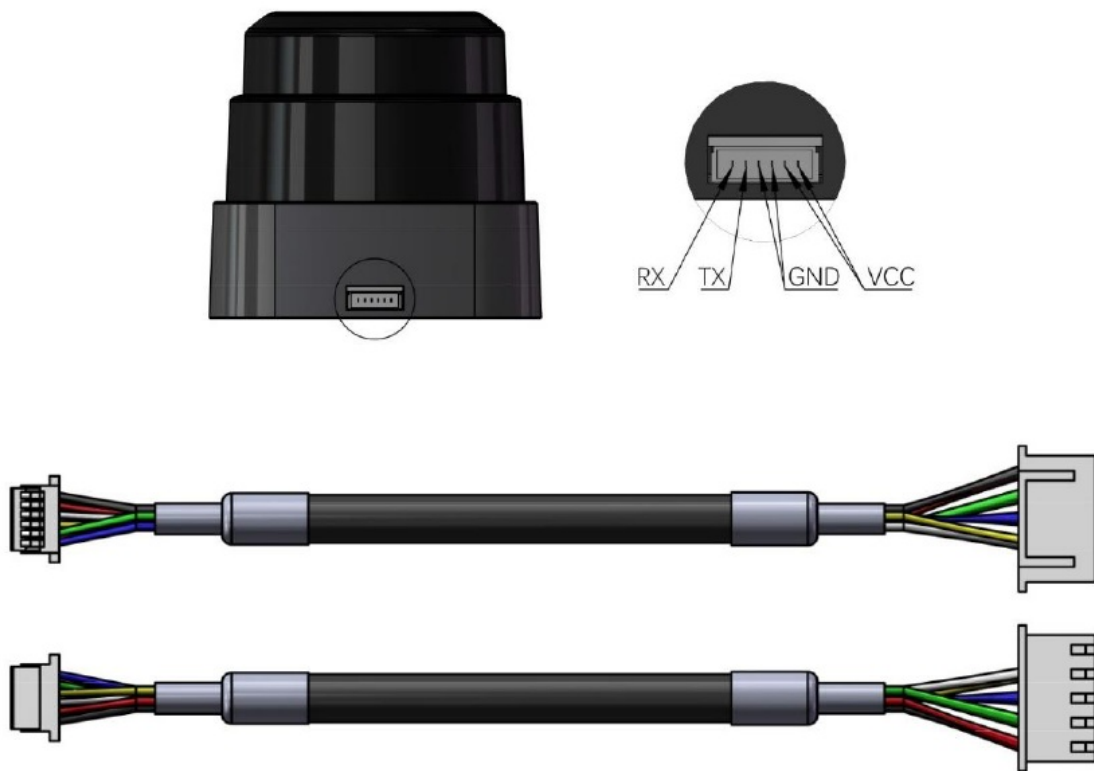


Figure 3-1 RPLIDAR S1 Pins

Color	Signal Name	Type	Description	Min	Typical	Max
Black						
	VCC	Power	Total Power	4.8V	5V	5.5V
Red						
White						
	GND	Power	GND	0V	0V	0V
Yellow						
Blue	RX	Input	Serial port input of the scanner core	0V	3.3V	3.5V
Green	TX	Output	Serial port output of the scanner core	0V	3.3V	3.5V

Figure 3-2 RPLIDAR S1 Pin Definition and Specification

RPLIDAR S1 uses the one 5V DC power supply for powering the scan motor and the scan core at the same time. No extra power is required.

With build-in and speed-adjustable motor driver, RPLIDAR S1 can control the start, the stop and the rotating speed of the motor via the MOTOCTL signal.

- Reference Design for RPLIDAR development

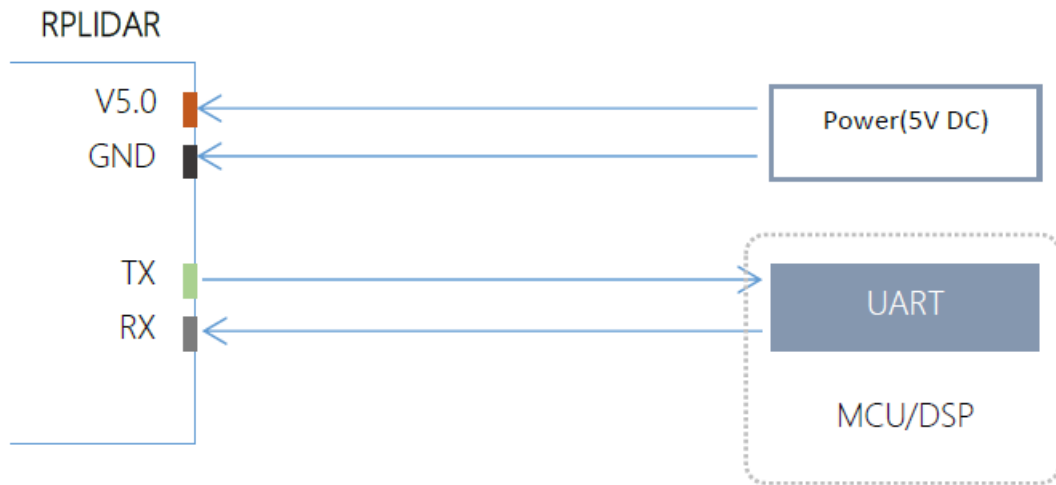


Figure 3-3 RPLIDAR S1 Pins Reference Design

Pin Definition for the USB Adapter

The USB adapter is also using XH2.54-5P specification socket, and it can be connected with RPLIDAR S1 directly. The pin definition is the same as the RPLIDAR S1.

USB-DC power cord instruction

The developer kit provides USB-DC power cord for the user to connect additional power to the USB adapter for additional power supply. For the output voltage and current requirements of the power supply, please refer to the datasheet of the corresponding lidar model

Configure RPLIDAR S1 Scan Frequency

The RPLIDAR S1's scan frequency can be modified by invoking the related functions in the SDK to configure the motor speed.

Please refer to the RPLIDAR protocol and application note for more information and the SDK for the sample code on RPLIDAR scan frequency.

SDK Usage

SLAMTEC provides RPLIDAR SDK support on both Windows and Linux platforms. And users can embed the SDK source code to other operating system or embedded systems quickly. Please refer to the SDK document for more information.

Operation Recommendation

Pre-Heating for Best Performance

The scan core will be heating when start working. We recommend pre-heating RPLIDAR (Start the scan mode and the scan motor is rotating) for more than 2 minutes to get the best measurement accuracy.

Ambient Temperature

RPLIDAR's measurement resolution is sensitive to the ambient temperature. Improper use may even damage the

sensor. Please avoid using RPLIDAR in extremely high temperatures (>45 °C) and too low temperatures (<-5 °C).


Ambient Light

Compared with RPLIDAR A series, RPLIDAR S1 performs better to resist ambient light interference, which supports it to work properly in outdoor environment.

Revision History

Date	Version	Description
2019-03-28	1.0	RPLIDAR S1 initial version
2019-06-18	1.1	Items change in the Development Kit
2021-06-11	1.2	Change the power adapter to USB-DC power cord The ambient temperature range is changed to -5°C~45°C
2021-11-24	1.3	Delete MOTOCTL

Documents / Resources

	SLAMTEC RPLIDAR S1 Low Cost 360 Degree Laser Range Scanner [pdf] User Manual RPLIDAR S1, Low Cost 360 Degree, Laser Range Scanner, Range Scanner, Cost 360 Degree
---	--