


SKYWORKS Isolated RS232 and RS485 Expansion Board User Guide

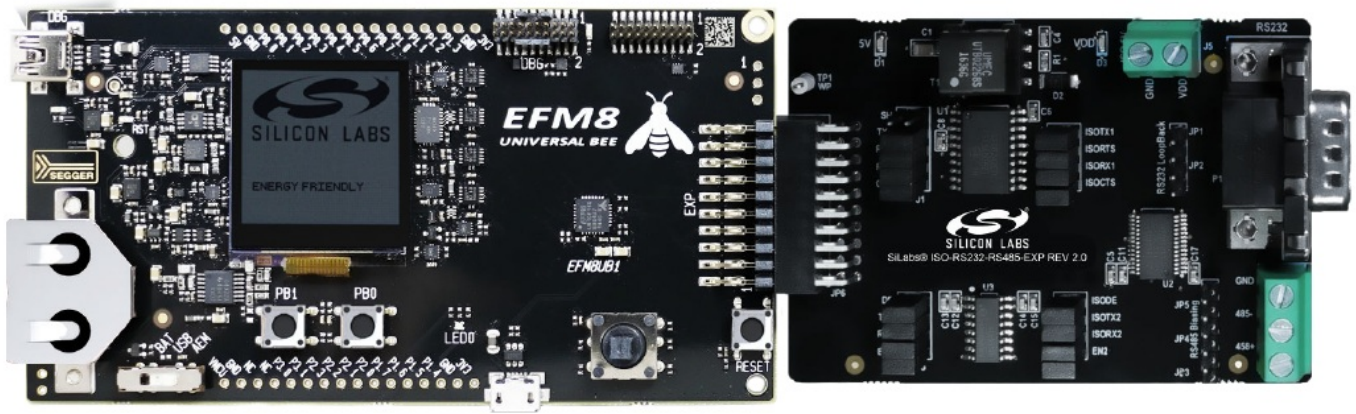
[Home](#) » [SKYWORKS](#) » SKYWORKS Isolated RS232 and RS485 Expansion Board User Guide 

Contents

- [1 SKYWORKS Isolated RS232 and RS485 Expansion Board](#)
- [2 KEY FEATURES OR KEY POINTS](#)
- [3 Kit Contents](#)
- [4 Details and Applications](#)
 - [4.1 Hardware](#)
- [5 Getting Started](#)
 - [5.1 Loading RS485 Software Demo](#)
 - [5.2 Connecting the EXP Board](#)
 - [5.3 Connecting the EXP Board](#)
- [6 Relevant Documentation](#)
- [7 Skyworks Solutions, Inc.](#)
- [8 Documents / Resources](#)
 - [8.1 References](#)
- [9 Related Posts](#)



SKYWORKS Isolated RS232 and RS485 Expansion Board



The Silicon Labs Isolated RS232 and RS485 Evaluation Board is a hardware plugin card for EFM8 and EFM32 Starter Kits (STKs). The Isolated RS232 and RS485 EXP is intended to help demonstrate and evaluate applications for Silicon Labs isolation and MCU products. Silicon Labs isolation products create a CMOS barrier to protect components while still allowing for communication and power transfer. Silicon Labs MCU products offer broad solutions for low power, industrial, consumer electronics and more. Software demos are available for connecting the MCU Isolated RS232 and RS485 EXP and can be downloaded and run through Simplicity Studio™. The demos send signals across the isolation barrier and the message is seen by the user on a terminal or on the screen of the MCU STK. They also showcase Silicon Labs ISOVolt technology as the MCU powers components across the isolation barrier.

Note: For full use and evaluation of the Isolated RS232 and RS485 EXP a MCU STK is needed. For full demonstration, two MCU STKs and two Isolated RS232 and RS485 EXPs are needed to communicate between one another. Software examples are provided for two MCU STKs, the EFM32 Wonder Gecko Starter Kit EFM32WG-STK3800 and the EFM8 Universal Bee 1 Starter Kit SLSTK2000A.

KEY FEATURES OR KEY POINTS

- 20-pin headers for connection to EFM8 and EFM32 starter kits
- Software demos available in Simplicity Studio
- Power and communication over the isolation barrier
- Jumpers for easy manual control of input signals

Kit Contents

The Isolated RS232 and RS485 Evaluation Kit contains the Expansion Board, null modem DB9 cable, and a QR code card for quick access to information. Other features of the kit include the following items

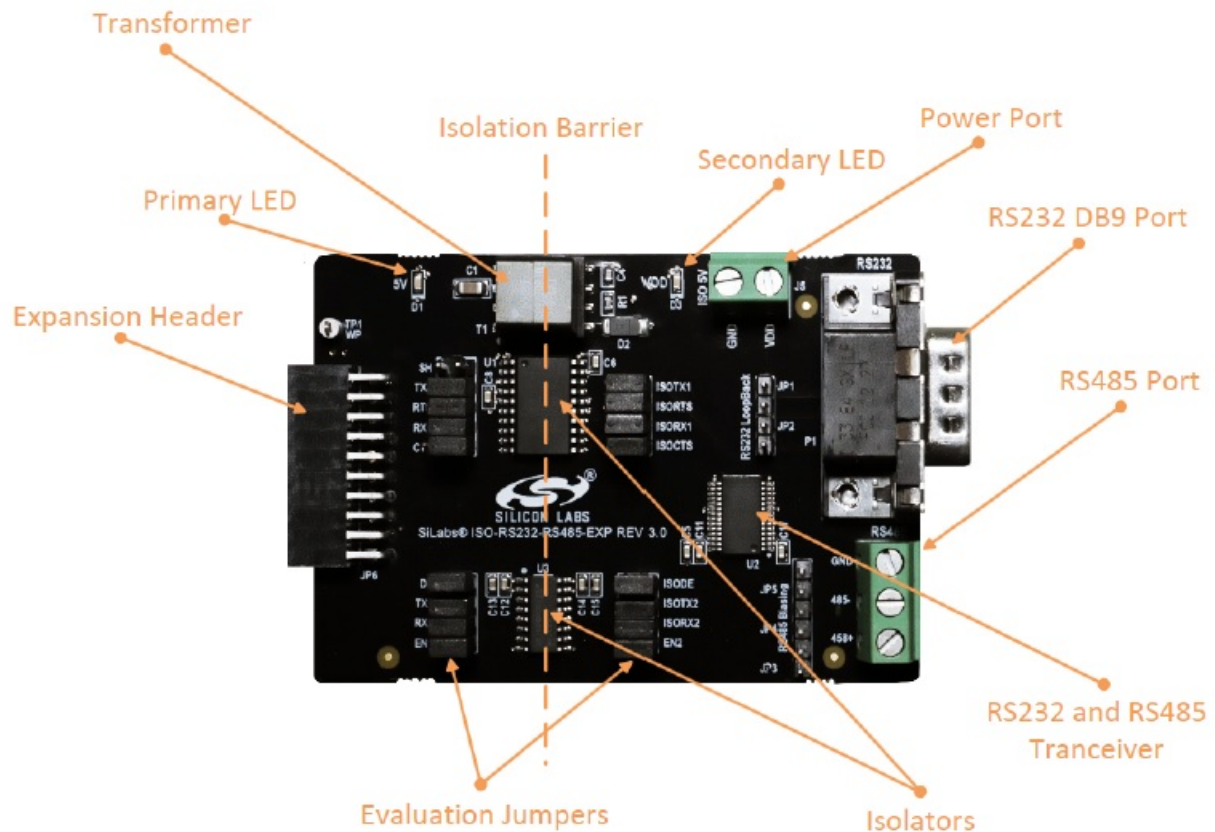


Figure 1.1. Annotated Isolated RS232 and RS485 EXP

- 20-pin header to connect to the MCU STK
- DB9 port for RS232
- Screw terminals for RS485
- Power of the EXP board through the 20-pin header or screw terminals
- Breakout points for precise evaluation of specific systems
- Isolation barrier to separate the STK MCU from the EXP
- Easy use through Simplicity Studio

Details and Applications

This evaluation kit and associated demos allow the MCU STK, Isolated RS232 and RS485 EXP, and sensors to communicate through the RS ports on the EXP board while being isolated. The MCU communicates through UART to the isolation devices. These signals are carried through the barrier into an RS transceiver which converts it to either RS485 or RS232. Then, the RS ports can be read by a host or another MCU/EXP combination. The RS communication protocols, especially RS485, are widely used in industrial and commercial applications where long wires, multiple nodes, high power, or noise are common. Isolation is widely needed in the following markets:

- Industrial automation systems
- Medical electronics
- Hybrid electric vehicles
- PLCs, distributed control systems
- Isolated switch mode supplies
- Isolated ADC and DACs
- Motor control

- Power inverters
- Communication systems

All of these market segments use various communication protocols, such as RS485, CAN, I2C, SPI, UART and the combination of Silicon Labs isolators and MCU products can serve any of these segments.

Hardware

The Isolated RS232 and RS485 EXP key components are

- Si88242ED-IS – Digital Isolator with Integrated DC-DC Converter containing 4 unidirectional channels, Automotive, 20-pin SOIC
- Si8631BB-B-IS1- Digital CMOS Isolator with 3 channels, up to 150Mbps, Automotive, 16-Pin SOIC
- ISL3332IAZ – RS232 and RS485 transceiver
- UTB02268s – Power inverter

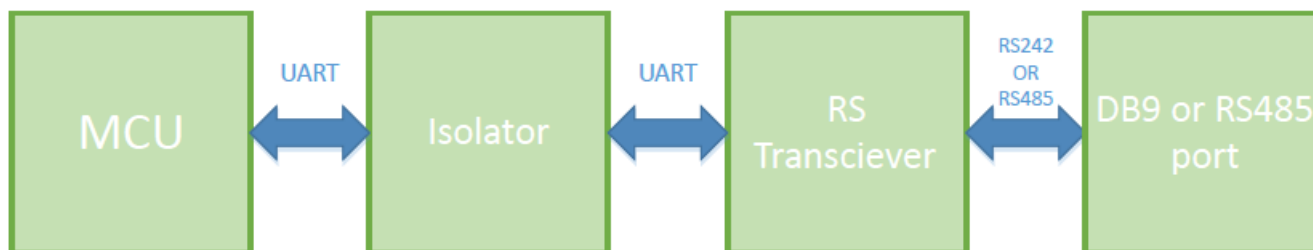


Figure 2.1. Isolated RS232 and RS485 EXP and MCU STK block diagram

The flow of the EXP board connected to an MCU Starter Kit is shown in the figure below.

Jumpers and Headers

- Isolated RS232 and RS485 EXP contains many jumpers and headers for easy debugging and added functionality.
- J1 and J2 contain the 4 wire RS232 signals with J1 coming from the MCU and J2 coming from the transceiver.
- J1 also contains the shutdown jumper for the isolator. With this populated, the DC-DC converter is disabled and no power will be sent over the barrier. The other side of the isolation barrier must then be powered separately via the J5 port. With J1 unpopulated, power will flow over the isolation barrier and only one power source is needed.
- J3 and J4 contain the RS485 signals with J3 coming from the MCU and J4 coming from the transceiver.
- JP1 and JP2 allow loopback of the RS232 signals in the occurrence that no RS232 host or device is available.
- JP4 and JP5 allow for RS485 biasing.
- The schematics for the board are found in Figure 3.

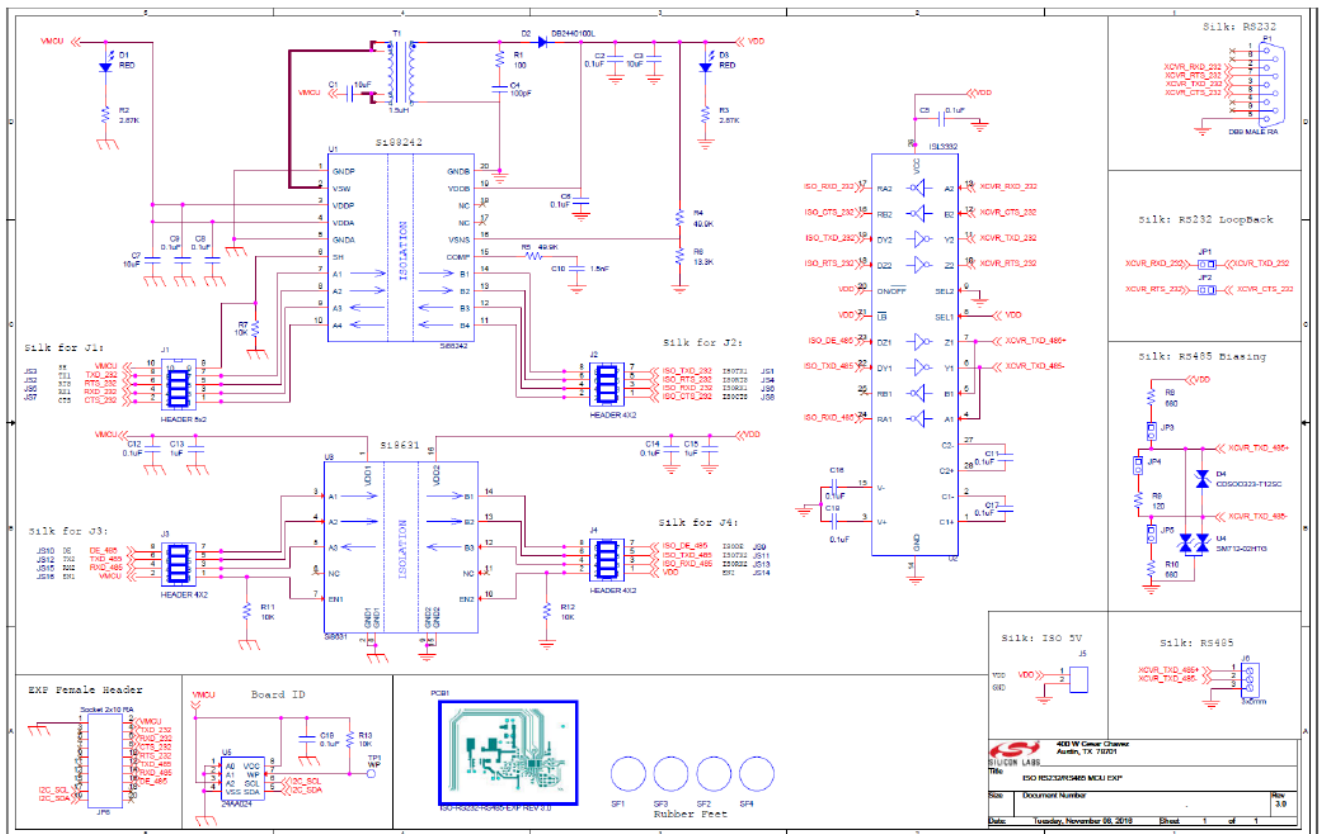


Figure 2.2. Isolated USB EXP Schematic

Header Connections

The Isolated RS232 and RS485 EXP connects to the MCU STK via a 20-pin header. On the EXP board is the receptacle and the MCU STK has the pins. They align in such a way to take advantage of certain MCU peripherals, such as UART and GPIOs. See the figure below for the exact pin out. See the individual MCU STK user guides for each specific board. The one shown below is the EFM32 Wonder Gecko Starter Kit pin out.

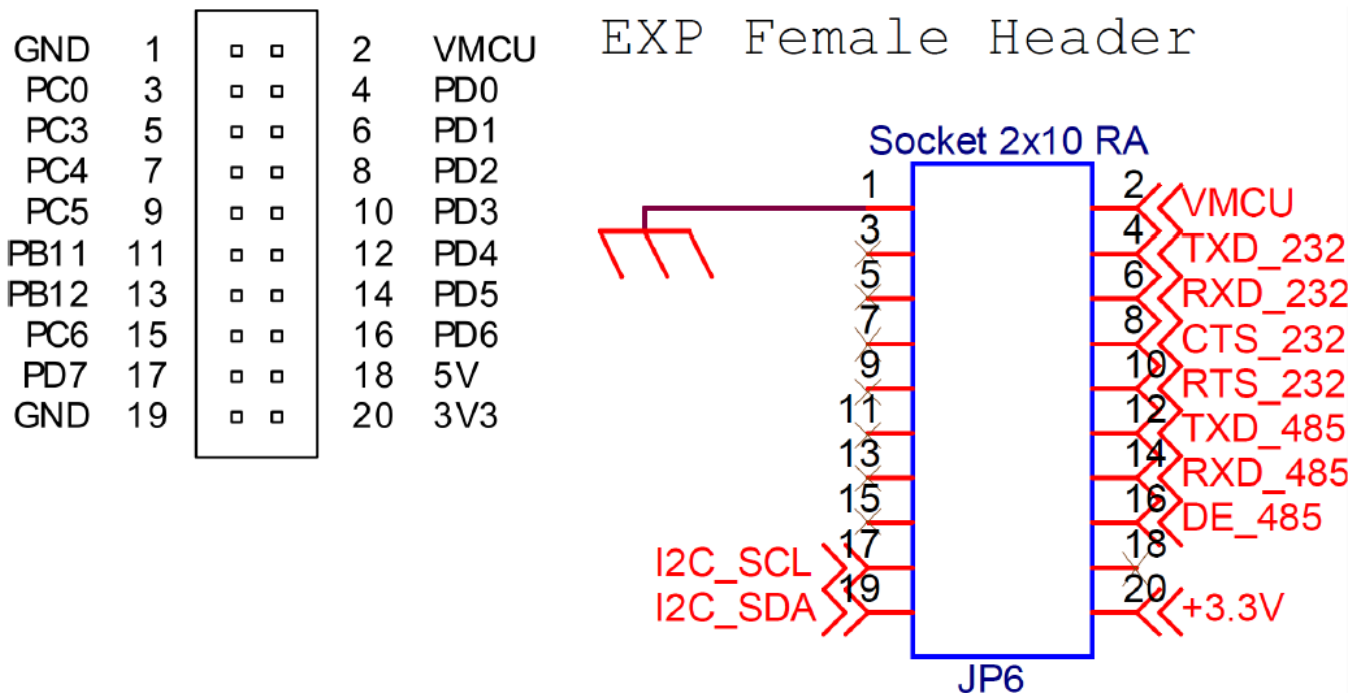


Figure 2.3. EFM32 WG STK 20-pin header (left) and the Isolated RS232 and RS485 EXP receptacle header (right)

Getting Started

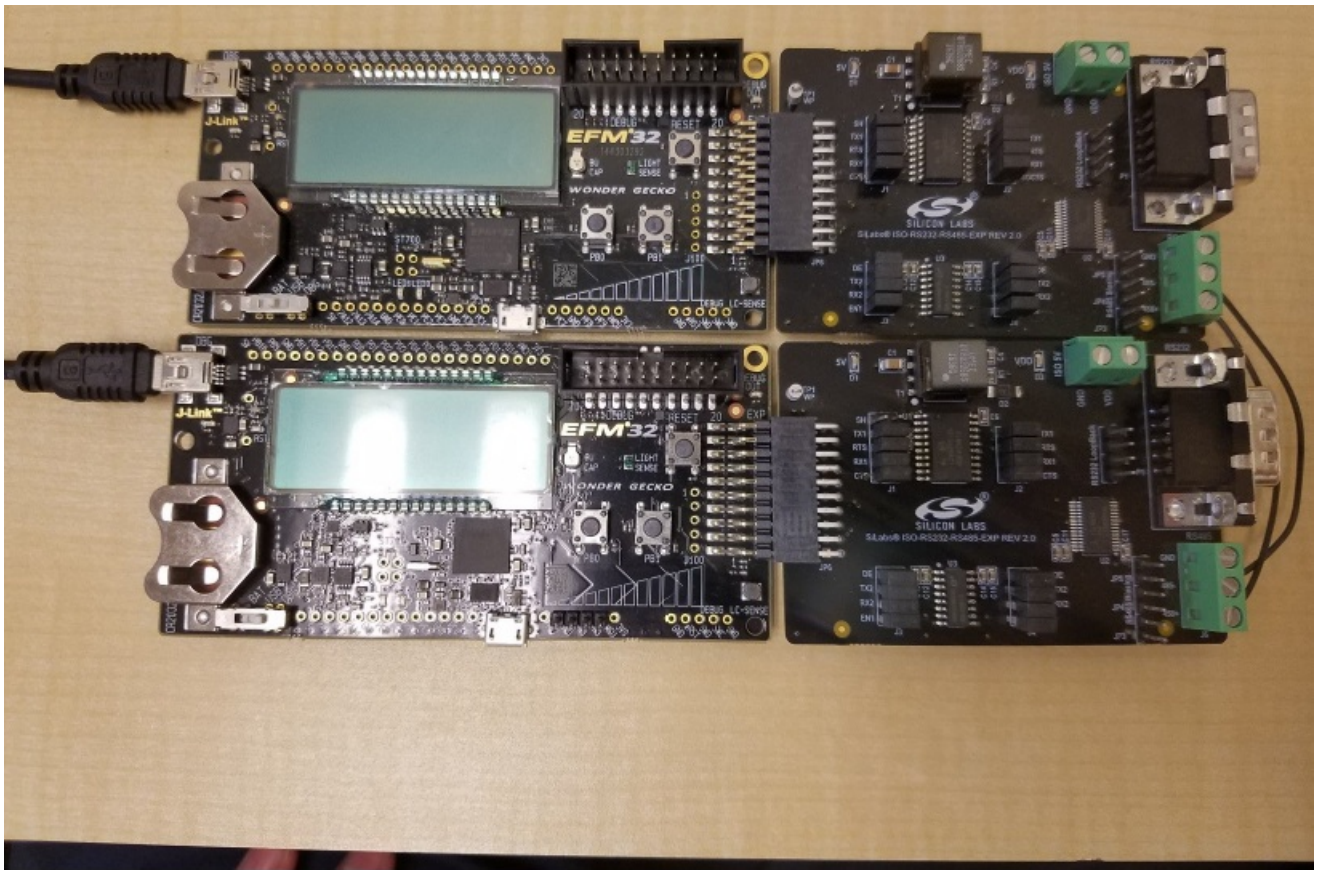


Figure 3.1. Completed RS485 demonstration setup

The first step to getting started with a new Isolated RS232 and RS485 EXP is to download Simplicity Studio from <http://www.silabs.com/simplicity-studio>. The Simplicity Studio software package contains all tools, drivers, software examples, and documentation needed to use the Isolated RS232 and RS485 EXP. Connect the Isolated RS232 and RS485 EXP to the EFM32WG-STK3800 Wonder Gecko STK or the EFM8UB1 STK. The demo code can be loaded using the USB cable and the J-Link debug interface.

Note: This document describes the evaluation process for two Wonder Gecko MCU STKs and two Isolated RS232 and RS485 EXPs are used. See the figure below for the final setup.

Loading RS485 Software Demo

The following steps load the demo firmware onto the Wonder Gecko STK. This process requires Simplicity Studio which is available for download at <http://www.silabs.com/simplicity-studio>. The process is very similar for the Universal Bee 1 STK.



Figure 3.2. Opening a New Project with the EFM32 Wonder Gecko

- Use a USB mini type cable to connect the J-Link debug interface on the Wonder Gecko STK to the PC and position the power source select switch to AEM (right-most position).

- Launch Simplicity Studio.
- Click on Refresh Detected Hardware.
- Select the Wonder Gecko STK device, under Device tab.
- Click on the New Project button.

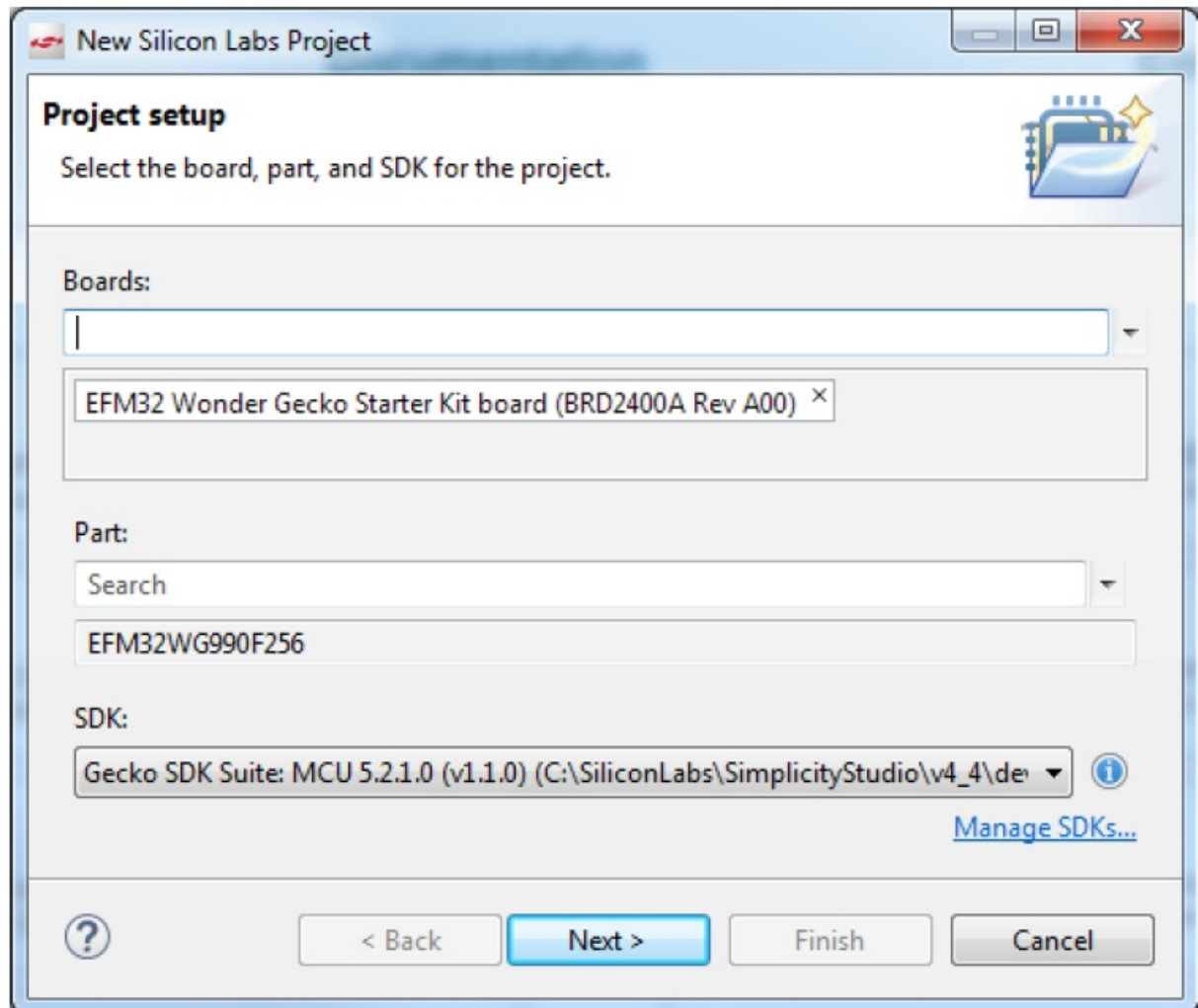


Figure 3.3. Project setup

- Ensure the Wonder Gecko Start Kit is selected and click next.

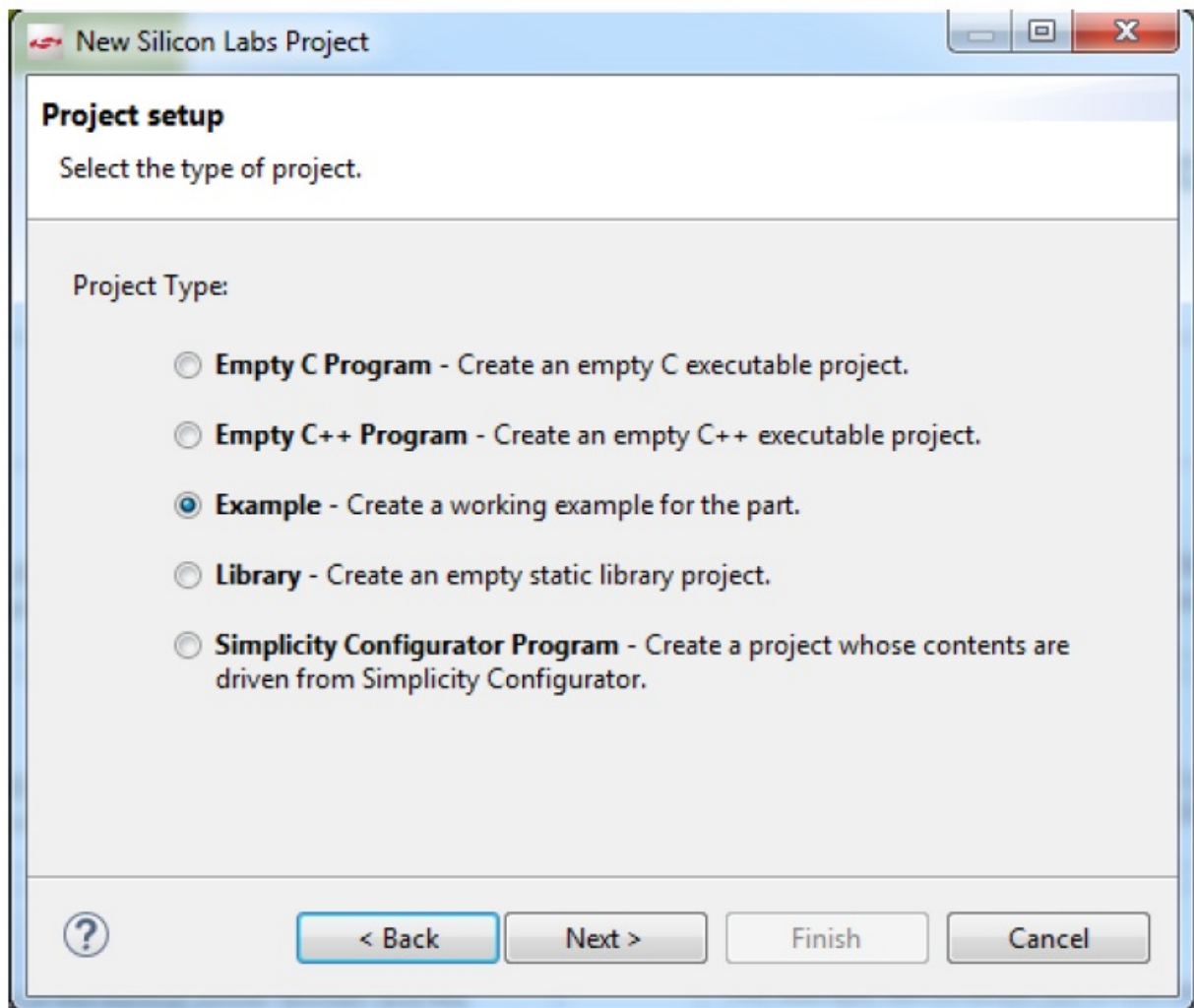


Figure 3.4. Starting from an Example

- Select example and click next.

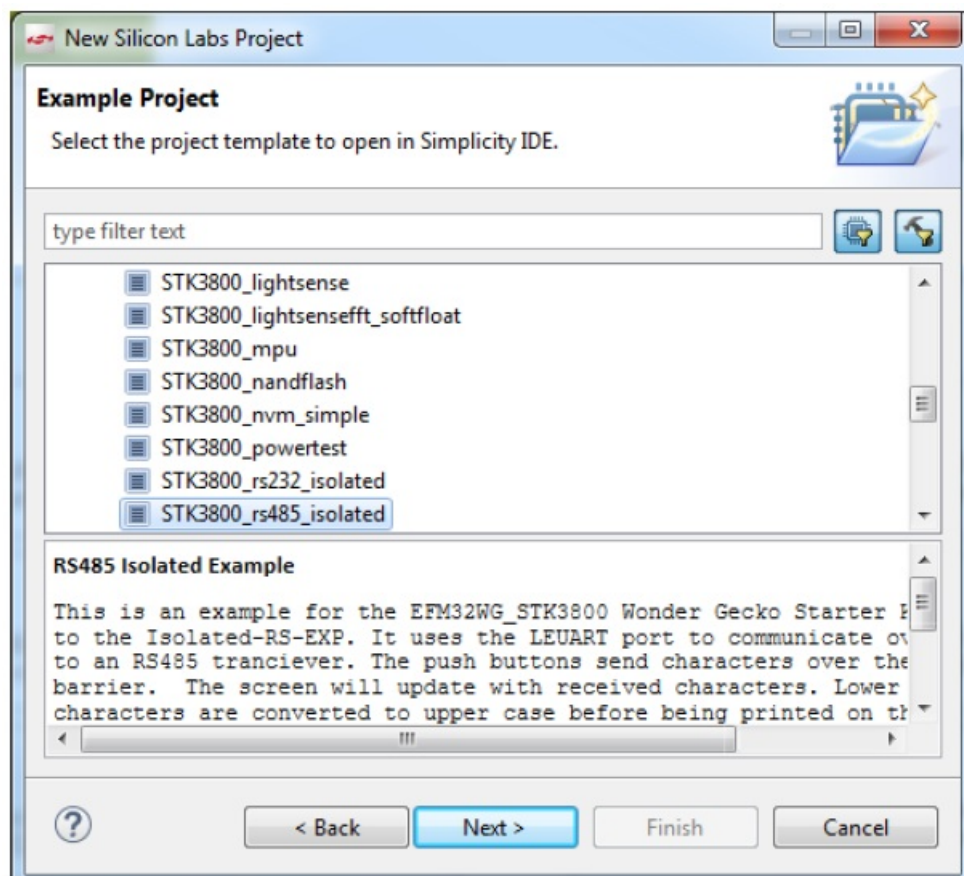


Figure 3.5. Selecting the rs485_isolated example project

- Locate the Isolated_RS485 example and click Next and then Finish to complete creating a new project.

The example and code can now be seen in the IDE perspective. From here it can be modified, debugged, and deployed to the Starter Kit. To deploy it to the board, select the Debug button outlined in red.

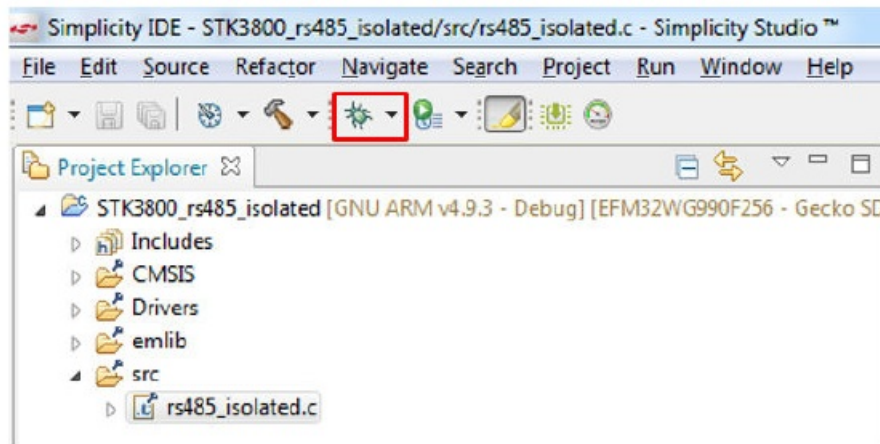


Figure 3.6. Debugging the rs485_isolated project

- Once in debug mode, the code can be stepped through, breakpoints can be set, and more. To program the board select the Deploy button outlined in red.

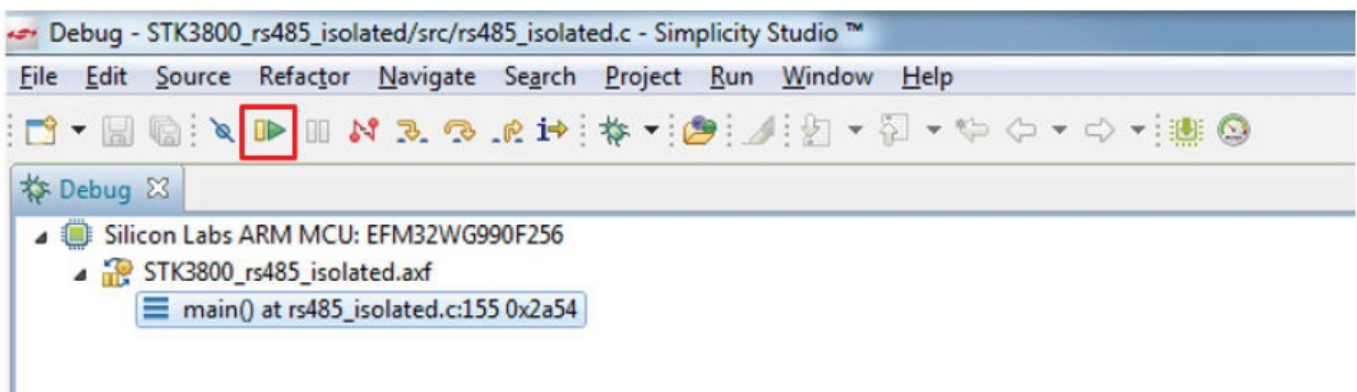


Figure 3.7. Deploying the rs485_isolated project

The example is now loaded onto the MCU STK. To fully demonstrate this, another host or MCU STK is needed to communicate with/between. If you are using another MCU STK, follow the same steps to load the demo. If using a different RS485 host with the Wonder Gecko STK, set the bit rate to 9600. If using the EFM8 Universal Bee 1 STK, set the bit rate to 115200.

Connecting the EXP Board

The EXP board has a 20-pin female header, which plugs into the STK. This EXP also comes with screw terminals for the RS485 signals.

To connect the EXP board, follow the steps below

- Connect the RS485+ and RS485- signals together.
- Connect the EXP board to the STK through the 20-pin header.
- With the EXP and STK connected and the MCU STK plugged in via USB, press the Reset button on the MCU STK, do it on both if using two MCU STKs.

The kit is now connected, the board is powered, and the demo is running on the MCUs. The EXP board contains an isolation barrier where power is transferred over to the RS transceiver.

Using and Understanding the RS485 Example

The demo displays a character on the MCU STK screen, increments the character, and sends it over RS485 when one of the buttons are pressed. It will continue to cycle through the alphabet. The communication flow is as follows

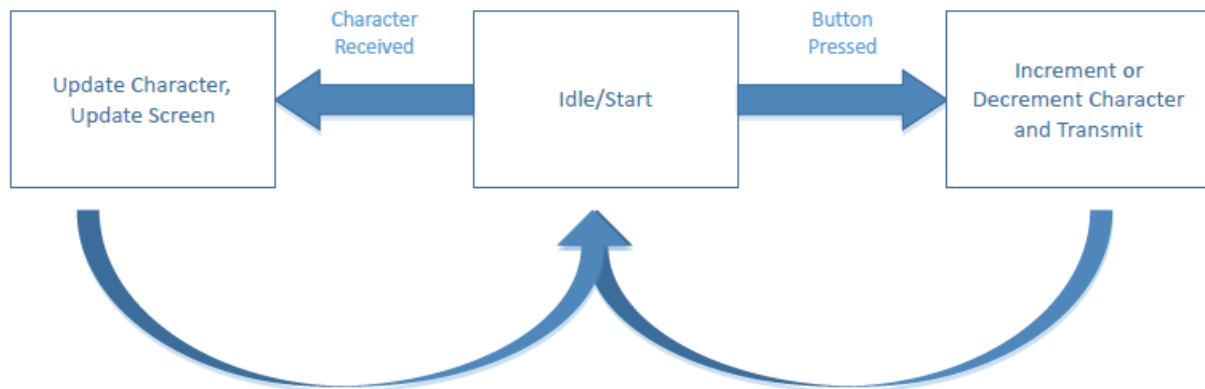


Figure 3.8. rs485_isolated example flow

- Both MCU STKs at idle and initialized.
- A button on the MCU STK is pressed.
- MCU sends signals via UART to the EXP.
- The EXP isolates the signals and transforms them to RS485.
- The RS485 signals are received by the second EXP.
- The second EXP transfers them back to UART and passes them over the isolation barrier.
- The MCU receives the UART data and updates its screen.

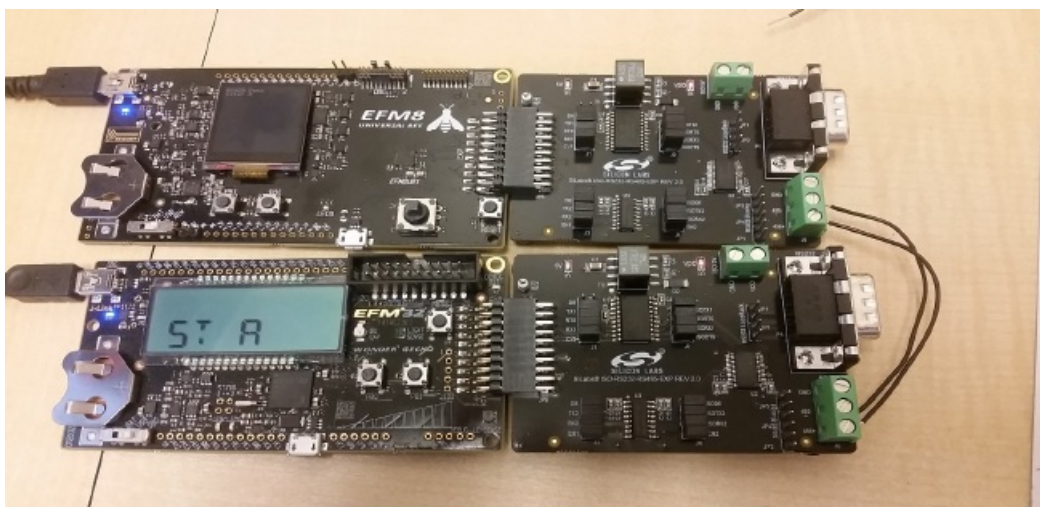


Figure 3.9. Board setup for example of isolated RS485 demo

The example successfully shows how to isolate the two MCU STKs from each other. If a noise or a current spike occurs on either one, the other is not affected. For more information on isolation, see the SI88xx documentation listed at the end of this document.

Loading RS232 Software Demos

The following steps load the demo firmware onto the Wonder Gecko STK. This process requires Simplicity Studio, which is available for download at <http://www.silabs.com/simplicity-studio>. These steps are similar to the RS485 demo described above. See figures above and follow the steps below.

- Use a USB mini type cable to connect the J-Link debug interface on the Wonder Gecko STK to the PC and position the power source select switch to AEM (right-most position).
- Launch Simplicity Studio.
- Click on the Refresh Detected Hardware.
- Select the Wonder Gecko STK device under Device tab.
- Click on the New Project button.
- Leave the default part and board and click next.
- Select example and click next.
- Locate the Isolated_RS232 example and continue through the prompts until the project is loaded.

Note: This document describes the evaluation process assuming that two Wonder Gecko MCU STKs and two Isolated RS EXPs are used. The EFM8 Universal Bee 1 does not have an RS232 example. You may also use one MCU STK and EXP combination along with a host that has the ability to communicate with RS232.

Connecting the EXP Board

The EXP board has a 20-pin female header, which plugs into the STK. This EXP also comes with a DB9 port and cable for the RS232 pins.

To connect the EXP board, follow the steps below

- Connect the provided null modem DB9 cable to the port on the EXP.
- If using a host set the bit rate to 115200, connect the other end to the other set of boards or to a host. Most hosts use COM1 as their DB9 port.
- Connect the EXP board to the STK through the 20-pin header.
- Plug the USB cable into the MCU STK to power the two boards.
- With the EXP and MCU STK connected and the MCU STK plugged in via USB, press the Reset button on the MCU STK. If using two MCU STKs, reset both .
- The kit is now connected, the board is powered, and the demo is running one or both MCUs. The EXP board contains an isolation barrier where power is transferred over to the RS transceiver.

Using and Understanding the RS232 Example

The demo displays a character on the MCU STK screen, increments the character, and sends it over RS232 when one of the buttons are pressed. It will continue to cycle through the alphabet. The communication flow is as follows

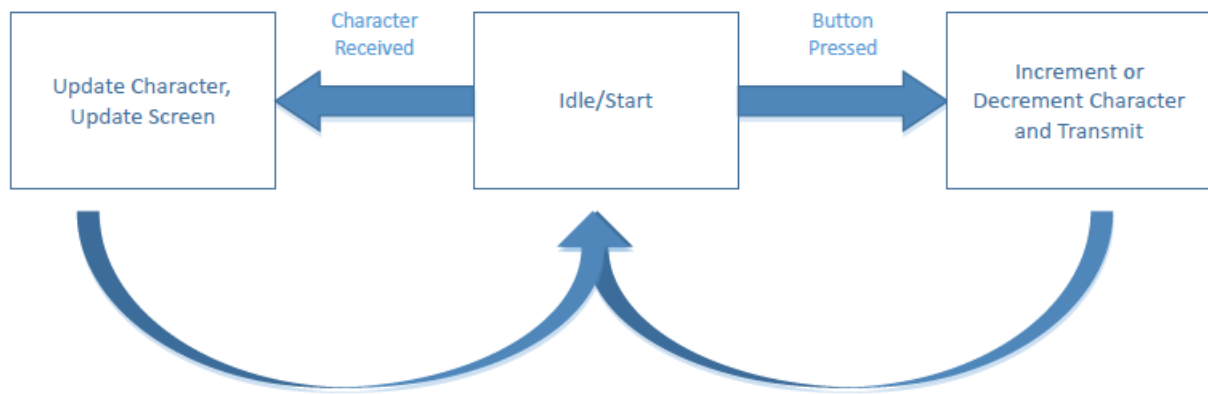


Figure 3.10. rs232_isolated example flow

- Both MCU STKs at idle and initialized.
- A button on the MCU STK is pressed.
- MCU sends signals via UART to the EXP.
- The EXP isolates the signals and transforms them to RS232.
- The RS232 signals are received by the second EXP.
- The second EXP transfers them back to UART and passes them over the isolation barrier.
- The MCU receives the UART data and updates its screen.

The Example successfully showed how to isolate the two MCU STKs from each other. If a noise or a current spike occurs on either one, the other is not affected. For more information on isolation, see the Si88xx documentation listed at the end of this document.

Relevant Documentation

The following documents are available on <http://www.silabs.com>.

- EFM32 Wonder Gecko STK User Guide – User manual for the Wonder Gecko Starter Kit.
- Si88x4x Quad Digital Isolators with DC-DC Converter Datasheet — Overview and characteristics of the Si88x4x series of isolators.
- Si8640/Si8641/Si8642/Si8645 Low-Power Quad-Channel Digital Isolators Datasheet — Overview and characteristics of the Si864x series of isolators.

Datasheet and support documentation can be accessed on the Silicon Labs website <http://www.silabs.com> or in Simplicity Studio under the Document Index section.

- **Portfolio:** www.skyworksinc.com
- **Quality:** www.skyworksinc.com/quality
- **Support & Resources:** www.skyworksinc.com/support

Copyright © 2021 Skyworks Solutions, Inc. All Rights Reserved.

Information in this document is provided in connection with Skyworks Solutions, Inc. ("Skyworks") products or services. These materials, including the information contained herein, are provided by Skyworks as a service to its customers and may be used for informational purposes only by the customer. Skyworks assumes no responsibility for errors or omissions in these materials or the information contained herein. Skyworks may change its

documentation, products, services, specifications or product descriptions at any time, without notice. Skyworks makes no commitment to update the materials or information and shall have no responsibility whatsoever for conflicts, incompatibilities, or other difficulties arising from any future changes. No license, whether express, implied, by estoppel or otherwise, is granted to any intellectual property rights by this document. Skyworks assumes no liability for any materials, products or information provided hereunder, including the sale, distribution, reproduction or use of Skyworks products, information or materials, except as may be provided in Skyworks' Terms and Conditions of Sale.

THE MATERIALS, PRODUCTS AND INFORMATION ARE PROVIDED "AS IS" WITHOUT WARRANTY OF ANY KIND, WHETHER EXPRESS, IMPLIED, STATUTORY, OR OTHERWISE, INCLUDING FITNESS FOR A PARTICULAR PURPOSE OR USE, MERCHANTABILITY, PERFORMANCE, QUALITY OR NON-INFRINGEMENT OF ANY INTELLECTUAL PROPERTY RIGHT; ALL SUCH WARRANTIES ARE HEREBY EXPRESSLY DISCLAIMED. SKYWORKS DOES NOT WARRANT THE ACCURACY OR COMPLETENESS OF THE INFORMATION, TEXT, GRAPHICS OR OTHER ITEMS CONTAINED WITHIN THESE MATERIALS. SKYWORKS SHALL NOT BE LIABLE FOR ANY DAMAGES, INCLUDING BUT NOT LIMITED TO ANY SPECIAL, INDIRECT, INCIDENTAL, STATUTORY, OR CONSEQUENTIAL DAMAGES, INCLUDING WITHOUT LIMITATION, LOST REVENUES OR LOST PROFITS THAT MAY RESULT FROM THE USE OF THE MATERIALS OR INFORMATION, WHETHER OR NOT THE RECIPIENT OF MATERIALS HAS BEEN ADVISED OF THE POSSIBILITY OF SUCH DAMAGE.


Skyworks products are not intended for use in medical, lifesaving or life-sustaining applications, or other equipment in which the failure of the Skyworks products could lead to personal injury, death, physical or environmental damage. Skyworks customers using or selling Skyworks products for use in such applications do so at their own risk and agree to fully indemnify Skyworks for any damages resulting from such improper use or sale. Customers are responsible for their products and applications using Skyworks products, which may deviate from published specifications as a result of design defects, errors, or operation of products outside of published parameters or design specifications. Customers should include design and operating safeguards to minimize these and other risks. Skyworks assumes no liability for applications assistance, customer product design, or damage to any equipment resulting from the use of Skyworks products outside of Skyworks' published specifications or parameters.

Skyworks, the Skyworks symbol, Sky5®, SkyOne®, SkyBlue™, Skyworks Green™, Clockbuilder®, DSPLL®, ISModem®, ProSLIC®, and SiPHY® are trademarks or registered trademarks of Skyworks Solutions, Inc. or its subsidiaries in the United States and other countries. Third-party brands and names are for identification purposes only and are the property of their respective owners. Additional information, including relevant terms and conditions, posted at www.skyworksinc.com, are incorporated by reference.




Skyworks Solutions, Inc.

- **Nasdaq:** SWKS
- sales@skyworksinc.com
- www.skyworksinc.com
- **USA:** 781-376-3000
- **Asia:** 886-2-2735 0399
- **Europe:** 33 (0)1 43548540

Documents / Resources

	<p>SKYWORKS Isolated RS232 and RS485 Expansion Board [pdf] User Guide Isolated RS232 and RS485 Expansion, Board</p>
--	---

References

-  [Silicon Labs](#)
-  [Simplicity Studio - Silicon Labs](#)
-  [Skyworks | Home](#)