

**SKYVENT**  
Q4 Bluetooth  
Headset



# SKYVENT Q4 Bluetooth Headset User Manual

[Home](#) » [SKYVENT](#) » SKYVENT Q4 Bluetooth Headset User Manual 

## Contents

- 1 SKYVENT Q4 Bluetooth Headset
- 2 Product Usage Instructions
- 3 ABOUT
- 4 INSTALLATION
- 5 GET STARTED
- 6 FM Radio On/Off & Station Switchable
- 7 PHONE FUNCTIONS
- 8 INTERCOM PAIRING
- 9 Four Intercom Pairing
- 10 INTERCOM & CELLPHONE MUSIC
- 11 AUDIO SHARING (Ideally for driver and passenger)
- 12 LANGUAGE SWITCH
- 13 WARNING
- 14 STATEMENT & WARRANTY
- 15 FAQs
- 16 Documents / Resources
  - 16.1 References

**SKYVENT**

**SKYVENT Q4 Bluetooth Headset**



## Product Specifications

- Model: Q4
- Type: Bluetooth Headset
- Interface: USB Type-C Earphone
- Features: FM Radio, Intercom

## Product Usage Instructions

### Installation

1. Insert the back clip into the edge of the helmet.
2. Use the Velcro to attach the earphone and boom/soft mic inside the helmet.
3. Insert the Q4 model onto the clip slot and secure it.
4. Plug in the speakers and microphone into the Q4 model to start using the intercom feature.

### Power On/Off

- To power on: Long press the Power button. The blue light will indicate the device is on.
- To power off: Simultaneously press and hold the Power and FM buttons for 5 seconds. The light will turn off.

### Factory Reset

To reset the device to factory settings: Long press the + and – buttons simultaneously for 5 seconds. The red light will flash for 2 seconds followed by the blue light.

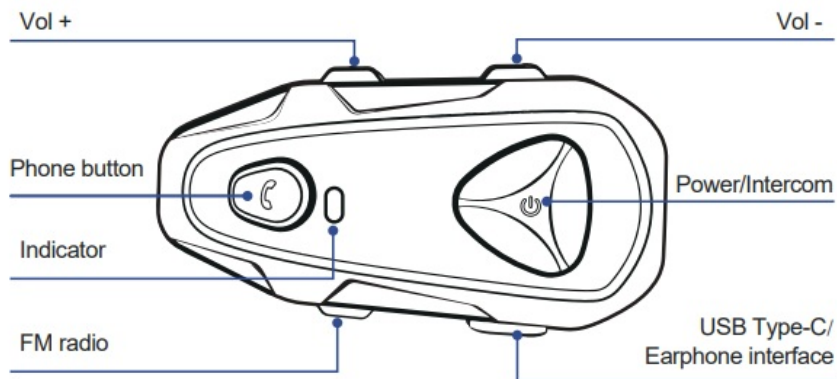
### Pairing and Bluetooth Connection

- To pair with a phone: Long-press the Phone button for 5 seconds to enter pairing mode. Search and pair with the Q4 device on your cellphone.
- To play/pause music: Single-click the Phone button.
- To activate voice assistant: Press the Phone button for 1 second.

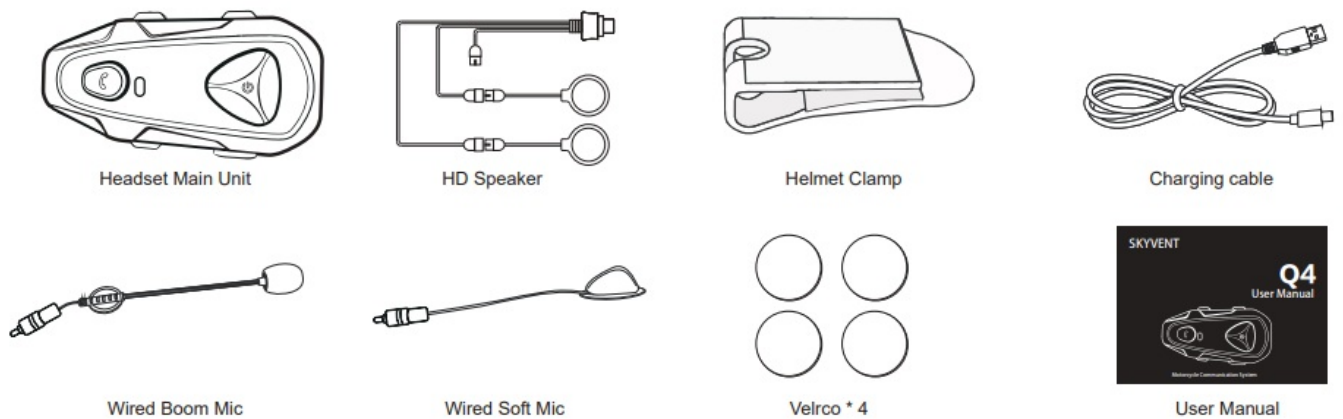
# ABOUT

## Product Details

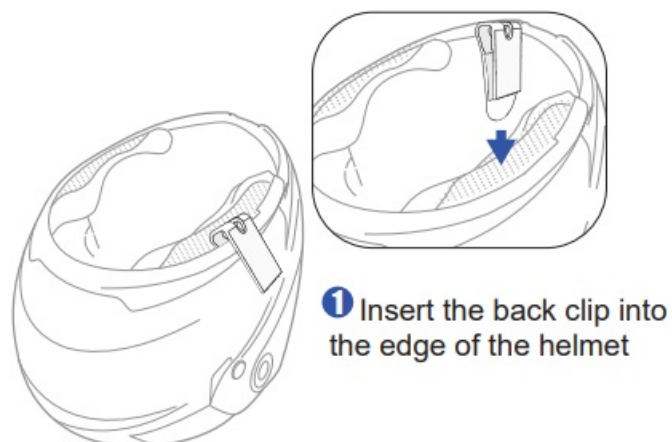
### 1.1 Product Details

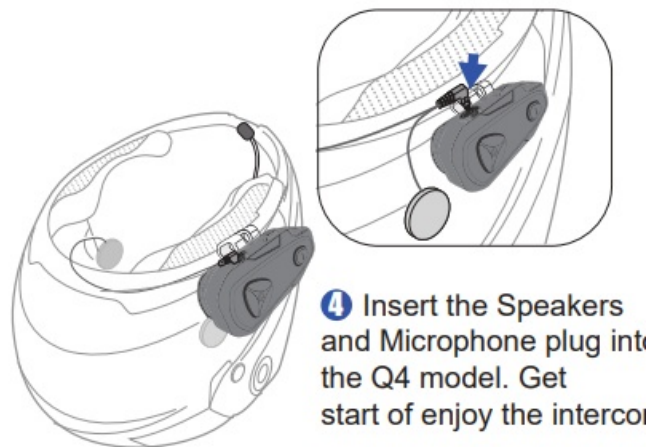
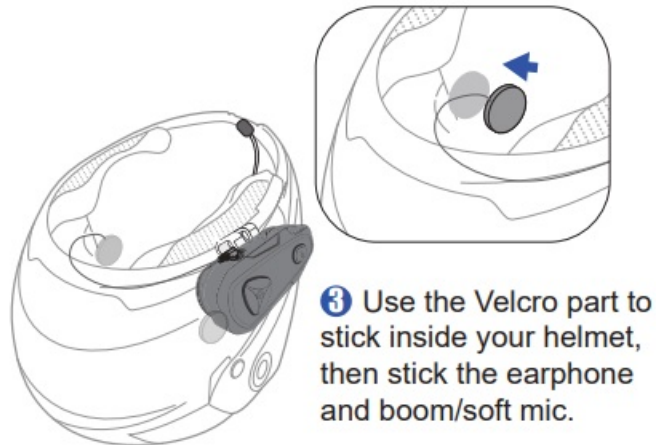
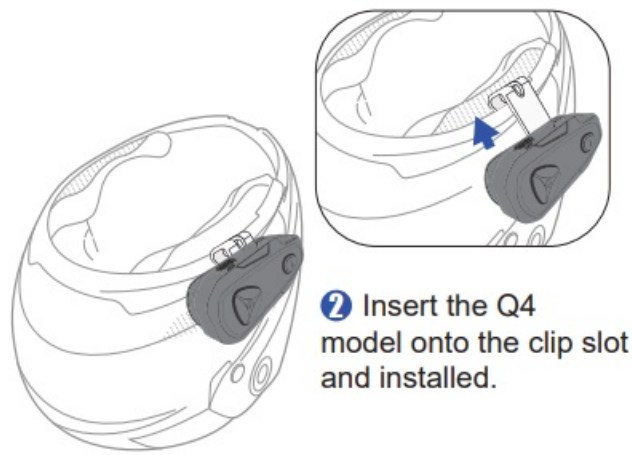


## Package Contents



## INSTALLATION





## GET STARTED

### Operation Instruction



Single-click



Double-click



1s Long Press

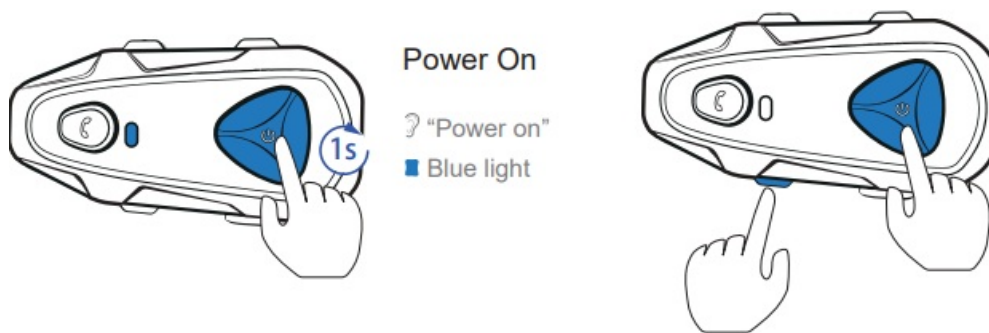


Press Simultaneously

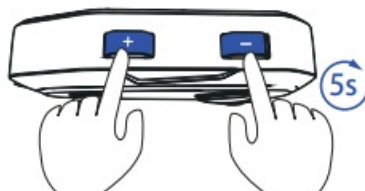


5s Press Simultaneously

### Power On/Off



## Reset

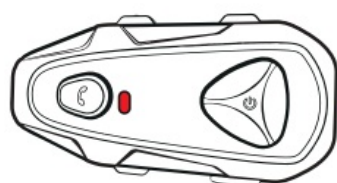


### Factory Reset

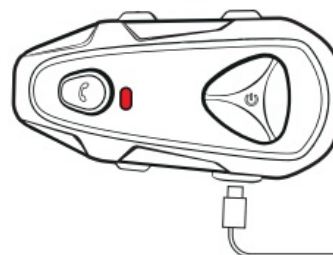
Long press the "+" and "-" buttons at the same time for 5s.

■ Red light last for 2s then Blue light on

## Low Battery Indication/Charging Indication



■ Red light flashes twice each 2 mins



### Charging

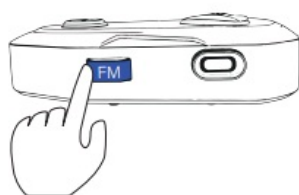
■ Red light always on

### Full-charged

■ Light off

## FM Radio On/Off & Station Switchable

When FM is on, it will automatically search the FM station. Intercom & FM could work at the same time.

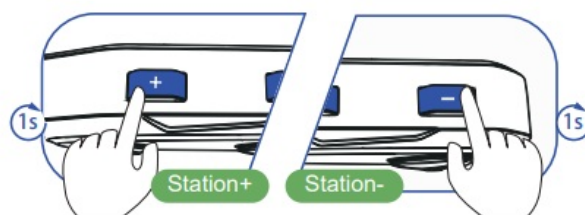


Single click to open the FM.

? "FM on"

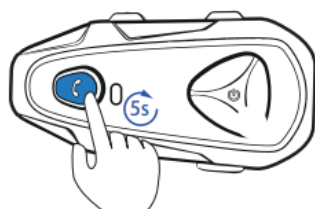
Click again to turn-off the FM.

? "FM off"



## PHONE FUNCTIONS

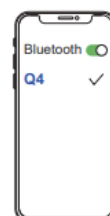
### Phone Pairing



Long-press the "Phone" button for 5s to enter the pairing mode.

? "Phone pairing"

■ Red & Blue lights flash at the same time

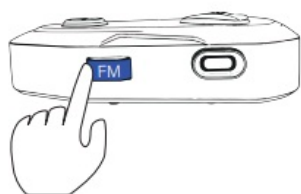


Open your cellphone Bluetooth, search and pair the "Q4".

? "Pairing successful"

■ Blue light flashes slowly

## Music Playing

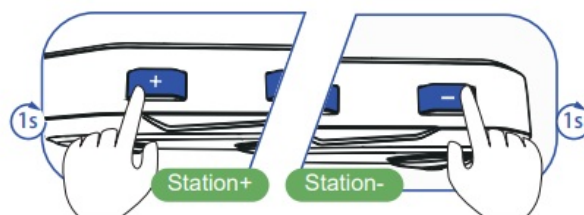


Single click to open the FM.

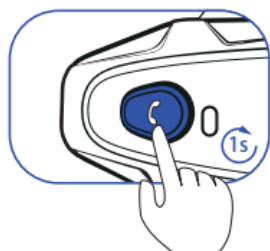
? "FM on"

Click again to turn-off the FM.

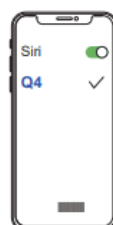
? "FM off"



## Voice Assistant



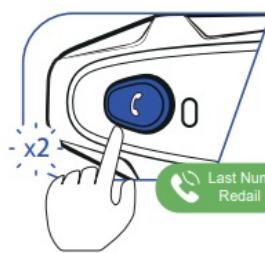
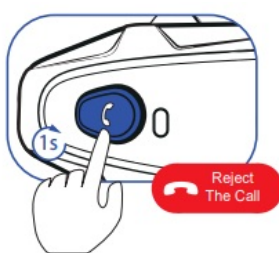
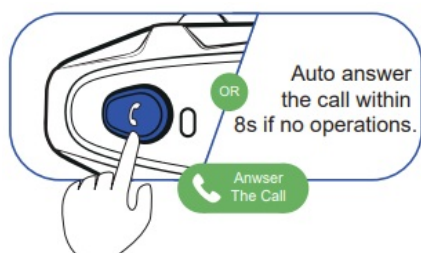
Press the "Phone" button for 1s to activate the Siri/Google assistant.



When voice assistant arosed, then talk to the mic.



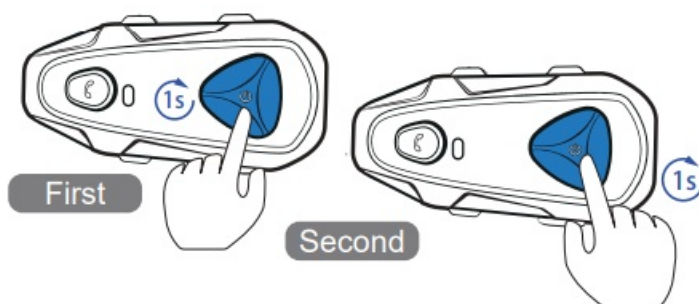
## Phone Call Operations



## INTERCOM PAIRING

### Two Intercom Pairing

1.

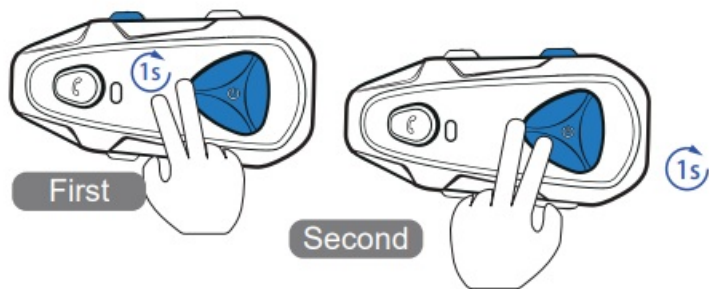


Long press the "Power" button for 1s to power on both Q4.



- "Power on"
- Blue light

2.

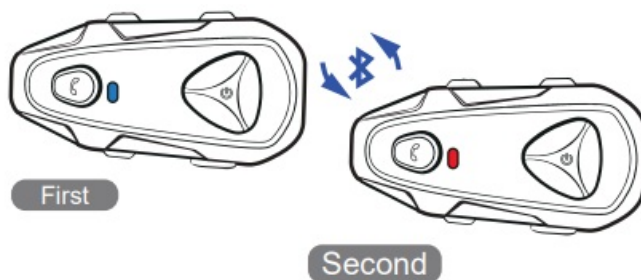






After power on, long press the “Power” and “Vol+” buttons for 1s on the First Intercom, “Power” and “Vol-” buttons for 1s on the Second Intercom. Both Q4 will auto search and pair successfully.

- “Intercom A pairing”
- “Pairing successful”
-  Red & Blue lights flash at the same time
- “Intercom B pairing”
- “Pairing successful”
-  Red & Blue lights flash at the same time

3.

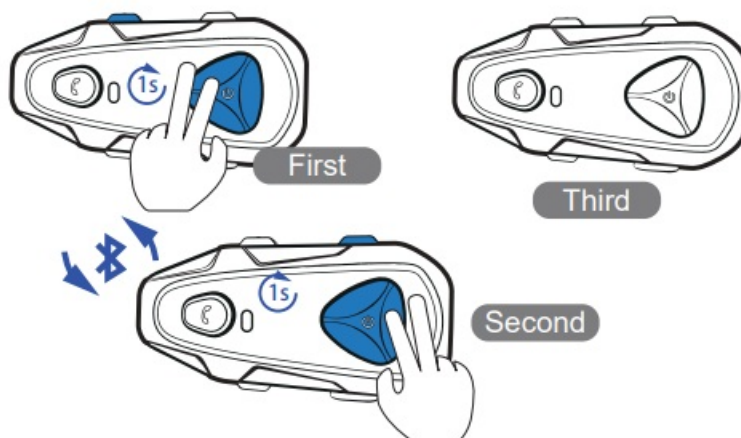


When paired successfully, both models could start to communicate directly then.

- If sounds pairing failed, reset both models and start from step 1.
- “Intercom A connected”
-  Blue light flashes slowly
- “Intercom B connected”
-  Red light flashes slowly

### Three Intercom Pairing

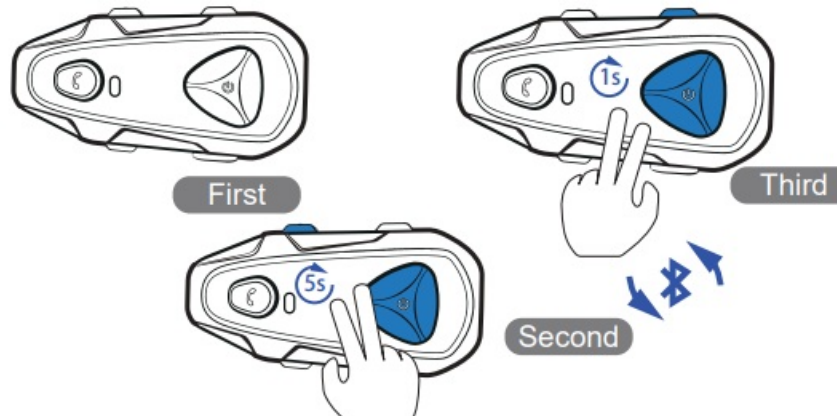
1.





Regard those three Q4 as the “First”, “Second” and “Third”. Long press the “Power” and “Vol+” buttons for 1s on

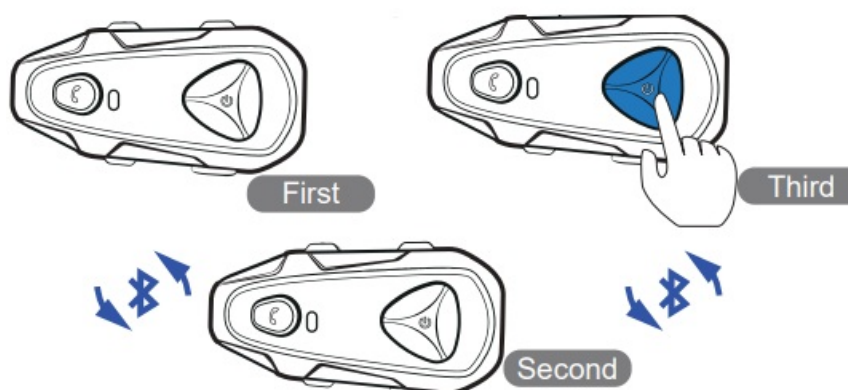
the First Intercom, “Power” and “Vol-” buttons for 1s on the Second Intercom. Those two Q4 will auto search and pair successfully.

- “Intercom A pairing”
- “Pairing successful”
- “Intercom A connected”
-  Blue light flashes slowly
- “Intercom B pairing”
- “Pairing successful”
- “Intercom B connected”
-  Red light flashes slowly





2. Long press the “Power” and “Vol+” buttons for 5s on the Second Intercom, “Power” and “Vol-” buttons for 1s on the Third Intercom. The Second and Third Q4 will auto search and pair successfully.”Intercom A pairing”

- “Pairing successful”
-  Red &Blue lights flash at the same time
- “Intercom B pairing”
- “Pairing successful”
-  Red &Blue lights flash at the same time



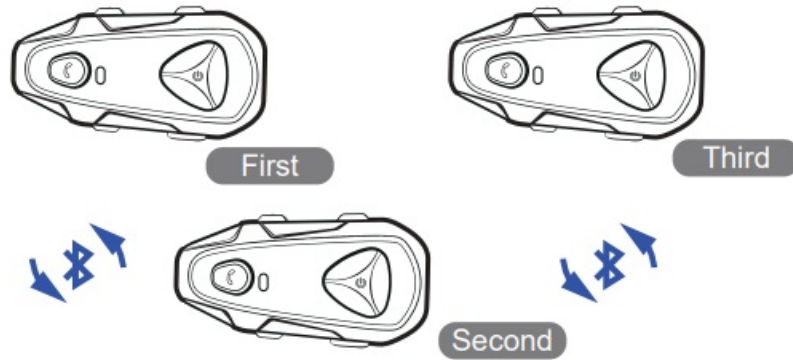
3. When paired successfully, both models could start to communicate directly then. If sounds pairing failed, reset both models and start from step 1.

- “Intercom A connected”
-  Blue light flashes slowly
- “Intercom B connected”
-  Red light flashes slowly

## Four Intercom Pairing





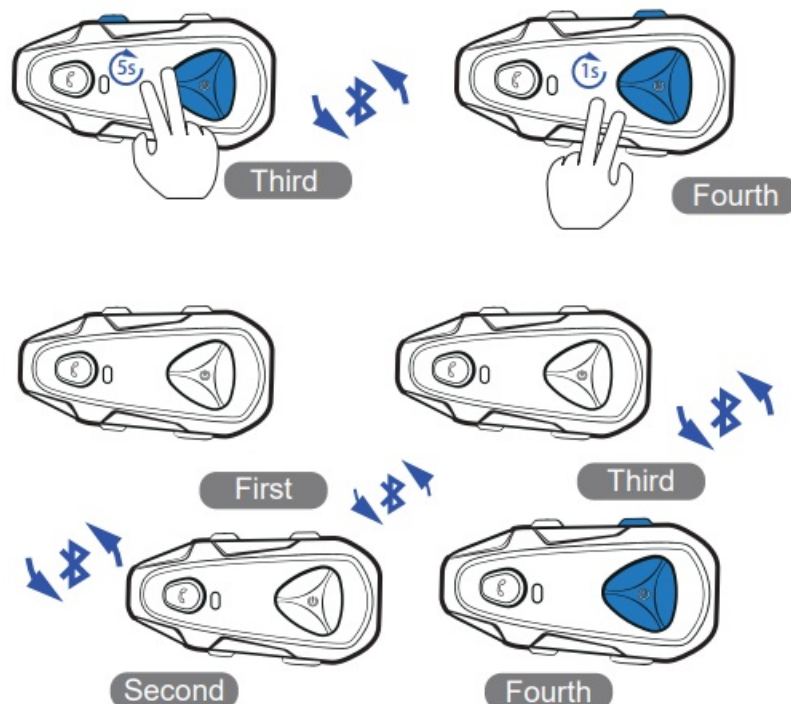
1.






Pair the “First”, “Second” and “Third” intercoms as the same steps as “Three Intercom Pairing”. No need to press the “Power” button on any Q4 to make a three-intercom group currently.


2. Long press the “Power” and “Vol+” buttons for 5s on the Third Intercom, “Power” and “Vol-” buttons for 1s on the Fourth Intercom. The Third and Fourth Q4 will auto search and pair successfully.

- “Intercom A pairing”
- “Pairing successful”
- “Intercom A connected”
-  Blue light flashes slowly
- “Intercom B pairing”
- “Pairing successful”
- “Intercom B connected”
-  Red light flashes slowly

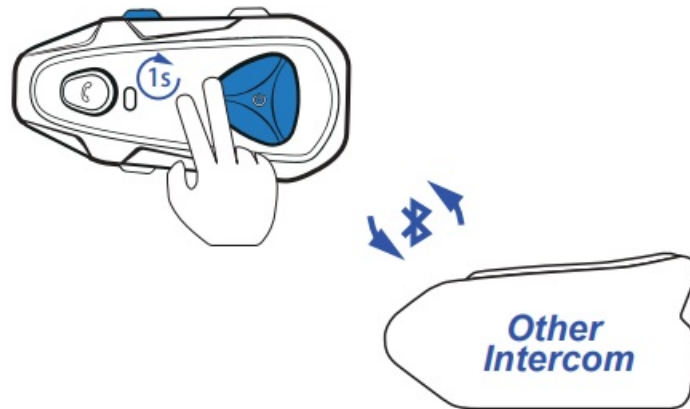




3. Single-press the “Power” button of any Q4, those four intercoms will auto connect together, then you could get start the 4-way communication.

- First:  Blue light flashes slowly
- second :  Red & Blue lights flash at the same time
- 

- third: Red & Blue lights flash at the same time
-  Fourth: Red light flashes slowly

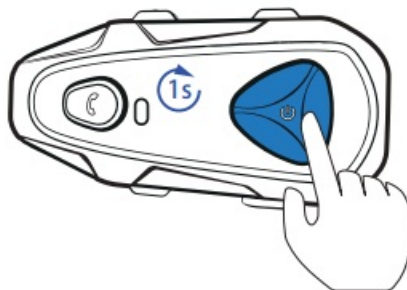
### Pair with Other Intercom



1. Power on the Q4, long press the “Power” and “Vol+” buttons at the same time for 1s until the Red & Blue lights flash.
  - “Intercom A pairing”
  -  Red & Blue lights flash at the same time
2. Use your other Bluetooth intercom, enter the Bluetooth pairing mode.
3. The Q4 will auto search the other intercom, and get connected for communication.
  - If can't be paired for many times, please contact your other model manufacturer if the model supports universal pairing.
  - “Pairing successful”
  - “Intercom A connected”
  -  Blue light flashes slowly

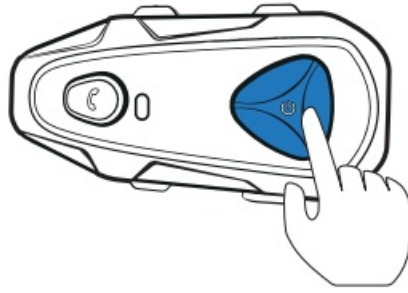
### Intercom Disconnection & Re-connection

•



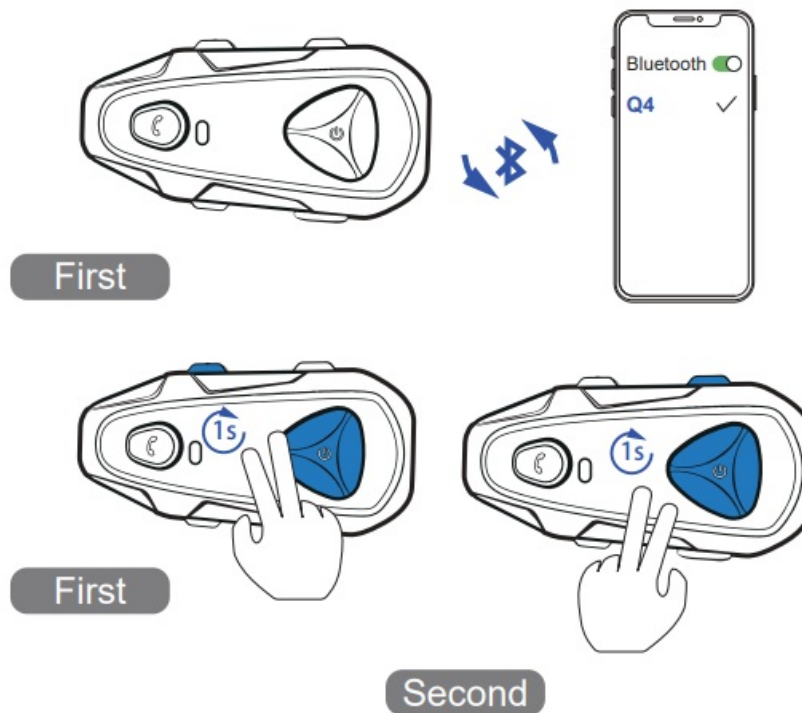
Long-press the “Power” button for 1s, the currently intercom would be disconnected.

- “Intercom A disconnected”



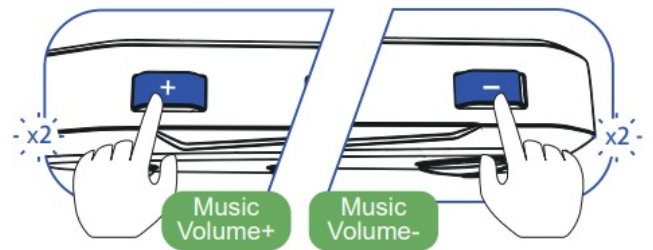
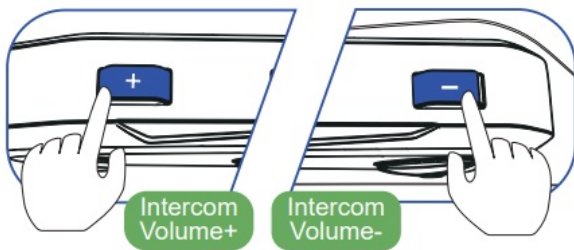
- After disconnected, single press the “Power” button, the currently intercom would be reconnected.
  - “Intercom A connected”

## INTERCOM & CELLPHONE MUSIC

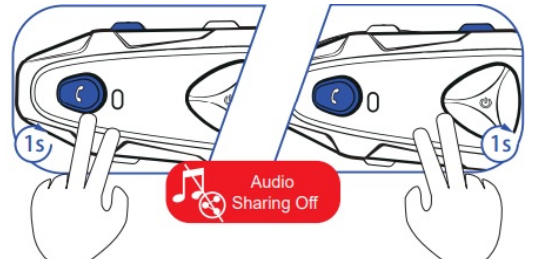
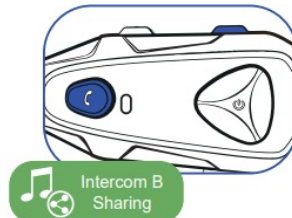


### Two ways:

- First connect the phone, then connect the intercom, after the success of the match can achieve audio mixing
  - “Intercom A pairing”
  - Red & Blue lights flash at the same time
- first connect the intercom, after the success of the match, long press “Power button” 1s to exit the intercom, then connect the phone, after the successful connection of the mobile phone and then click the “Power Button” to achieve audio mixing
  - “Intercom A connected”
  - Blue light flashes slowly
  - “Intercom B connected”
  - Red & Blue lights flash at the same time

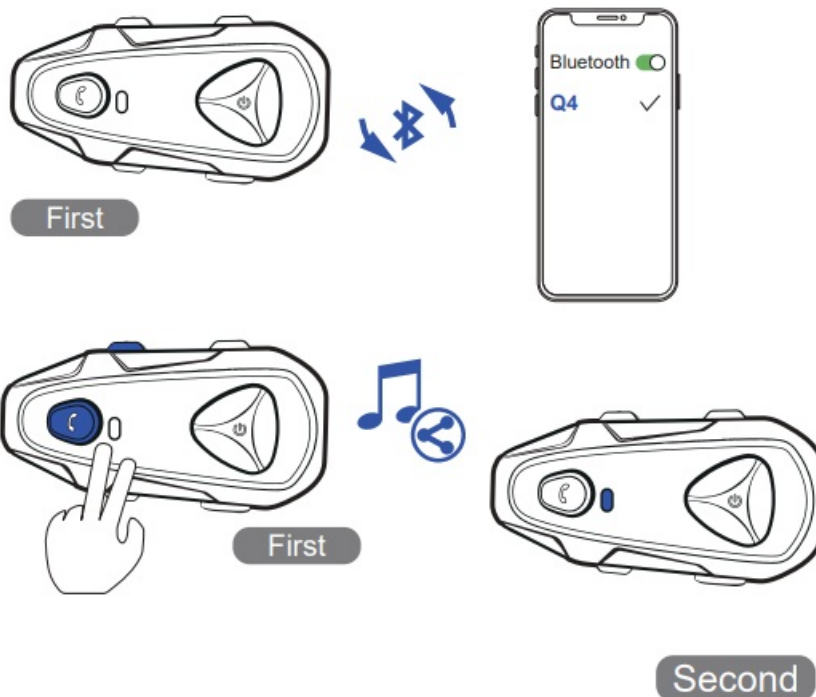


## AUDIO SHARING (Ideally for driver and passenger)



### Basic Sharing

1.



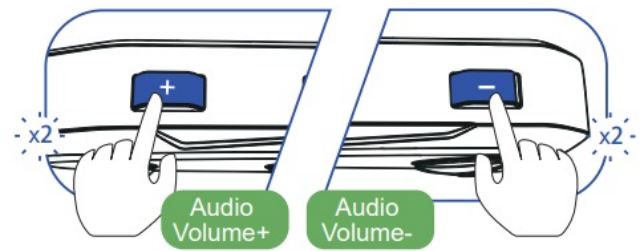
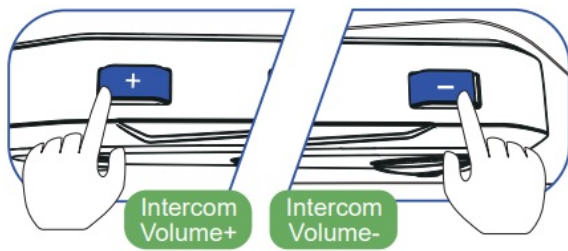
1 Pair one Q4 unit with your cellphone firstly. After paired, play the music or any other audio application on your cellphone.

- “Phone pairing”
- Red & Blue lights flash at the same time
- “Pairing successful”
- Blue light flashes slowly

2. Power on another Q4 model, then press the “Vol+” and “Phone” buttons simultaneously on the First Intercom, it will start the audio sharing function. Once the Second Intercom hear “Audio share”, both Q4 could enjoy the same music/audio.

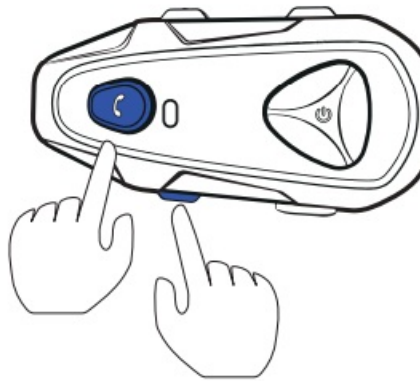
- “Audio share”

- Blue light
- “Du Du”
- Blue light



## LANGUAGE SWITCH

- 



Long-press the “Phone” button and “FM” button for 5s until hearing Di – Di sounds from the speaker, then the intercom already switched the current language to the next one. The default setting is English language.

- “Di Di”

## Product Parameters

- **Bluetooth version: BT 5.1**
  - Bluetooth chip: Qualcomm
- **Intercom distance: 750mA**
  - Max distance of 4: 1500m
- **Max phone BT distance: 30m**
  - Battery capacity: 500mAh
- **Battery life: 2500 times**
  - Operating voltage: 3.0V—4.2V
- **Intercom time: 18H**
  - Standby time: 250H
- **Charging time: 2—3H**
  - FM brands: 60 MHz-108 MHz
- **Speaker spec.: 040/20mW/32Q**
  - Speaker frequency response: 40Hz—20KHz
- **Mic sensitivity: -40±3dB**

- Earphone connector: Type-c
- **Audio S/N ratio: 275dB**
  - Distortion:
- **Material: ABS+PC**
  - Device weight: 47g
- **Waterproof: IP65**
  - Operating temperature: -300C—600C
- **Charging interface: Type-C**
  - Charger spec.: DC 5V/1A

## WARNING

The use of the device will impair your ability to hear other sounds and others around you.

Listening to music or speaking on a telephone may prevent you from hearing others around you and distract you from riding safely. The use of such device while riding may endanger you and others, and its use, in some areas, could not be allowed.

Using this device at a high volume may result in permanent hearing loss.

If you experience ringing in your ear or any other hearing related pain, reduce the volume or discontinue using this device. With continued use at high volume, your ears may become accustomed to the sound level, which may result in permanent damage to your hearing.

Please use this device at a safe volume level.

## STATEMENT & WARRANTY

### FCC Statement

- Changes or modifications not expressly approved by the party responsible for compliance could void the user's authority to operate the equipment.
- This equipment has been tested and found to comply with the limits for a Class B digital device, pursuant to part 15 of the FCC Rules. These limits are designed to provide reasonable protection against harmful interference in a residential installation.
- This equipment generates uses and can radiate radio frequency energy and, if not installed and used in accordance with the instructions, may cause harmful interference to radio communications. However, there is no guarantee that interference will not occur in a particular installation.
- If this equipment does caus harmful interference toradio or television reception, which can be determined by turning the equipment off and on, the user is encouraged to try to correct the interference by one or more of the following measures:
  - Reorient or relocate the receiving antenna.- Increase the separation between the equipment and receiver.
  - Connect the equipment into an outlet on a circuit different from that to which the receiver is connected.
  - Consult the dealer or an experienced radio/TV technician for help

Changes or modifications not expressly approved by the party responsible for compliancecould void the user's authority to operate the equipment. This device complies with Part15 of the FCC Rules. Operation is subject to the following two conditions:

1. this device may not cause harmful interference, and



2. this device must accept any interference received, including interference that may cause undesired operation

### **Warranty**

In normal use, one year warranty from the date of purchase. Any disassemble, modification will void the warranty.

### **ATTENTION**

- Installing equipment on the helmet is a modification of the helmet, which may cause the helmet's warranty to fail or hinder the helmet's function. This may cause danger in the event of accidents, so please fully understand the facts when using the helmet. If not, please return the product.
- Before driving, please make sure that the product is firmly and correctly mounted on the helmet. If the product falls off during driving, it will cause injury or accident.
- To ensure riding safety, please use this product carefully while on the road to avoid serious body injury, death or injury.
- In order to ensure the communication distance when riding, please try to use it in an open place.
- In the case of rain, please put the device jack down, USB rubber plug tight; During use, ensure that the headphone jack is fully plugged into the device to prevent water from entering the device.
- The battery capacity will change with the temperature. When the battery is used at low temperature or below 0° C, the battery life of the product may attenuate to different degrees.
- If the electronic function fails, please power off and try again.
- When using this product when operating vehicles or vehicles, the safety precautions of the vehicle manufacturer must be observed.

### **FCC Caution**

- This device complies with part 15 of the FCC Rules. Operation is subject to the following two conditions: (1) This device may not cause harmful interference, and (2) this device must accept any interference received, including interference that may cause undesired operation.
- Any Changes or modifications not expressly approved by the party responsible for compliance could void the user's authority to operate the equipment.
- **Note:** This equipment has been tested and found to comply with the limits for a Class B digital device, pursuant to part 15 of the FCC Rules. These limits are designed to provide reasonable protection against harmful interference in a residential installation. This equipment generates uses and can radiate radio frequency energy and, if not installed and used in accordance with the instructions, may cause harmful interference to radio communications. However, there is no guarantee that interference will not occur in a particular installation. If this equipment does cause harmful interference to radio or television reception, which can be determined by turning the equipment off and on, the user is encouraged to try to correct the interference by one or more of the following measures:
  - Reorient or relocate the receiving antenna.
  - Increase the separation between the equipment and receiver.
  - Connect the equipment into an outlet on a circuit different from that to which the receiver is connected.
  - Consult the dealer or an experienced radio/TV technician for help.
- The device has been evaluated to meet general RF exposure requirement. The device can be used in portable exposure condition without restriction.

## FAQs


### How do I use the intercom feature?

To use intercom, pair multiple Q4 devices following the provided instructions. Once paired successfully, you can communicate directly between devices.

### How do I know if the device is fully charged?

While charging, a red light will remain on. When fully charged, the light will turn off.

## Documents / Resources

	<a href="#">SKYVENT Q4 Bluetooth Headset</a> [pdf] User Manual 2BMNA-Q4, 2BMNAQ4, Q4 Bluetooth Headset, Q4, Bluetooth Headset, Headset
---	---

## References

- [User Manual](#)

[Manuals+](#), [Privacy Policy](#)

This website is an independent publication and is neither affiliated with nor endorsed by any of the trademark owners. The "Bluetooth®" word mark and logos are registered trademarks owned by Bluetooth SIG, Inc. The "Wi-Fi®" word mark and logos are registered trademarks owned by the Wi-Fi Alliance. Any use of these marks on this website does not imply any affiliation with or endorsement.