

SKYTECH ST2305 iOS Bluetooth User Guide

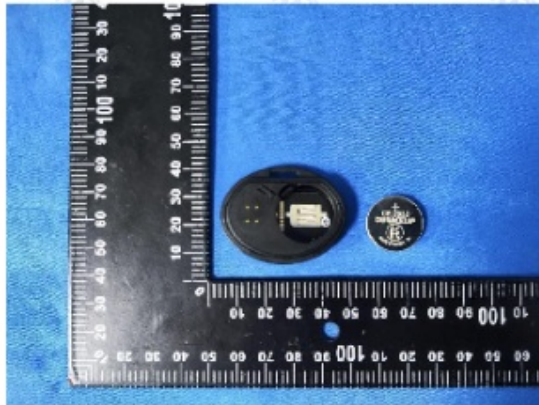
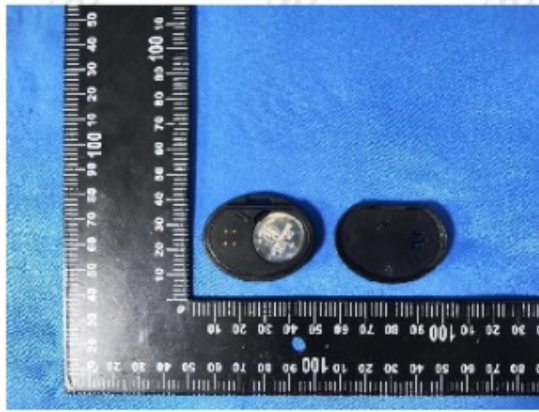
[Home](#) » [Skytech](#) » SKYTECH ST2305 iOS Bluetooth User Guide 

Contents

- [1 SKYTECH ST2305 iOS Bluetooth](#)
- [2 Product Information](#)
- [3 Product Usage Instructions](#)
- [4 Quick Start Guide](#)
- [5 FCC compliance statement](#)
- [6 Documents / Resources](#)
 - [6.1 References](#)
- [7 Related Posts](#)

SKYTECH

SKYTECH ST2305 iOS Bluetooth



Product Information

Specifications

- **Model:** Skytag II
- **Bluetooth version:** Compatible with iOS devices
- **Battery:** CR2032
- **Dimensions (Front side):** 70 mm
- **Dimensions (Back side):** 100 mm
- **FCC ID:** 2AOTO-ST2305

Product Usage Instructions

Pairing with your iOS device

1. Turn on Bluetooth on your iOS device.
2. Remove the back cover of the tracker and pull the battery tab. Press on the top of the battery to ensure it is not loose. You will hear a sound indicating the tracker is in pairing mode.
3. Open the Find My app on your iOS device.
4. Tap the Items icon at the bottom of the screen.
5. Select "Add Item" and then choose "Other Supported Item".
6. Your iOS device will now search for your Skytag II.

Replacing the battery

To replace the battery, follow these steps

1. Pry apart the battery cover using a screwdriver or your fingernail.
2. Remove the old battery.
3. Insert a new CR2032 battery into the compartment.
4. Carefully close the battery cover.

Factory resetting the device

To factory reset the device, follow these steps

1. Remove the cover and battery from the device.
2. With the button pressed, insert the battery into the compartment until you hear the reset tone.

FAQ

- **Q: What type of battery does the Skytag II use?**

A: The Skytag II uses a CR2032 battery.

- **Q: How do I pair the Skytag II with my iOS device?**

A: To pair the Skytag II with your iOS device, follow the instructions provided in the “Pairing with your iOS device” section above.

- **Q: How do I replace the battery in the Skytag II?**

A: To replace the battery in the Skytag II, follow the instructions provided in the “Replacing the battery” section above.

- **Q: How do I factory reset the Skytag II?**

A: To factory reset the Skytag II, follow the instructions provided in the “Factory resetting the device” section above.

Quick Start Guide



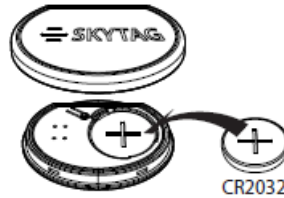
Pairing with your iOS device

1. On iOS device, turn Bluetooth on. With back cover removed, pull battery tab and press on the top of battery to ensure it is not loose. A sound will briefly play, indicating tracker is in pairing mode.
2. Open Find My app. Tap “Items” icon at bottom of the screen. Next select “Add Item” and then select “Other Supported Item”. Your iOS device will now search for your Skytag II.



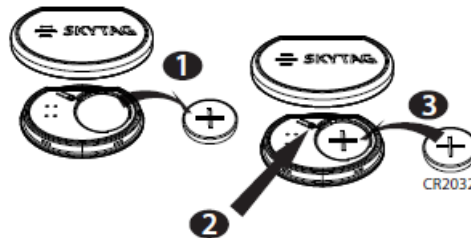
To replace battery

Pry apart the battery cover using the screwdriver or your fingernail



To factory reset the device

To factory reset the device, remove the cover and battery. With the button pressed, insert the battery into the compartment until you hear the reset tone.



Note

- Use of the Works with Apple badge means that a product has been designed to work specifically with the technology identified in the badge and has been certified by the product manufacturer to meet Apple Find My network product specifications and requirements. Apple is not responsible for the operation of this device or use of this product or its compliance with safety and regulatory standards.
- Apple Find My, Apple Watch, Find My, iPhone, iPad, iPadOS, iPod touch, Mac, macOS and watchOS are trademarks of Apple Inc. IOS is a trademark of Cisco and is used under license.
- To use the Find My app to locate this item, the latest version of iOS®, iPadOS®, or macOS® is recommended. The Find Items app on Apple Watch® requires the latest version of watchOS®.

FCC compliance statement

This device complies with part 15 of the FCC Rules. Operation is subject to the following two conditions

1. This device may not cause harmful interference, and
2. This device must accept any interference received, including interference that may cause undesired operation.

Note: This equipment has been tested and found to comply with the limits for a Class B digital device, pursuant to part 15 of the FCC Rules. These limits are designed to provide reasonable protection against harmful interference in a residential installation. This equipment generates, uses, and can radiate radio frequency energy and, if not installed and used in accordance with the instructions, may cause harmful interference to radio communications. However, there is no guarantee that interference will not occur in a particular installation. If this equipment does

cause harmful interference to radio or television reception, which can be determined by turning the equipment off and on, the user is encouraged to try to correct the interference by one or more of the following measures

- Reorient or relocate the receiving antenna.
- Increase the separation between the equipment and receiver.
- Connect the equipment to an outlet on a circuit different from that to which the receiver is connected. Consult the dealer or an experienced radio/TV technician for help.
- Changes or modifications to this product not authorized by party responsible could void the electromagnetic compatibility (EMC) and wireless compliance and negate your authority to operate the product.

This product has demonstrated EMC compliance under conditions that included the use of compliant peripheral devices and shielded cables between system components. It is important that you use compliant peripheral devices and shielded cables between system components to reduce the possibility of causing interference to radios, television sets, and other electronic devices.

FCC ID:2AOTO-ST2305




Battery Safety Warning

1. Keep batteries away from infants and children.
2. Never put batteries in mouth.
3. If a battery is swallowed, it can cause severe internal burns in just two hours, and can lead to death.

This device is an aid to assist in locating your item. There is no guarantee that your item will be found. The location shown on the map is usually accurate, but only shows your tag's last known location. Your tag's location will be updated if another Apple device is near it. The tag cannot update its own location. Using this product to track other people is strictly prohibited. If you become aware that you or another person is being tracked with this product, immediately contact the authorities.

Documents / Resources

	<p>SKYTECH ST2305 iOS Bluetooth [pdf] User Guide ST2305 iOS Bluetooth, ST2305, iOS Bluetooth, Bluetooth</p>
---	---

References

- [User Manual](#)

