



# SKYTECH GAMING Mini Gaming Computer PC Desktop User Guide

[Home](#) » [SKYTECH GAMING](#) » SKYTECH GAMING Mini Gaming Computer PC Desktop User Guide 

## Contents

- [1 SKYTECH GAMING Mini Gaming Computer PC Desktop](#)
- [2 CAREFULLY](#)
- [3 OW TO SCAN A QR CODE WITH ANDROID AND APPLE DEVICE](#)
- [4 Documents / Resources](#)
  - [4.1 References](#)
- [5 Related Posts](#)



**SKYTECH GAMING Mini Gaming Computer PC Desktop**



### STEP 1

Removing internal packaging foam is crucial to prevent airflow blockages or other issues that could impact the system's performance.

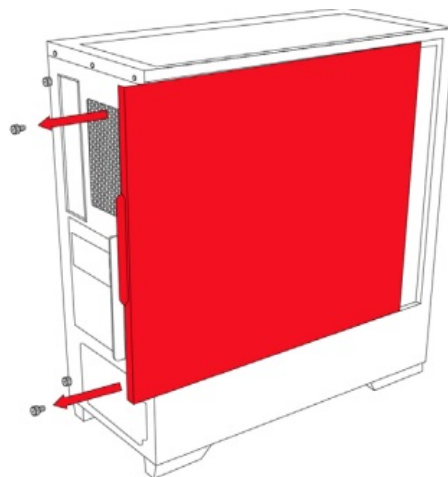
### REMOVE

screws from the left side panel and remove the panel.

**Note:** Screw location can vary depending on the chassis model.

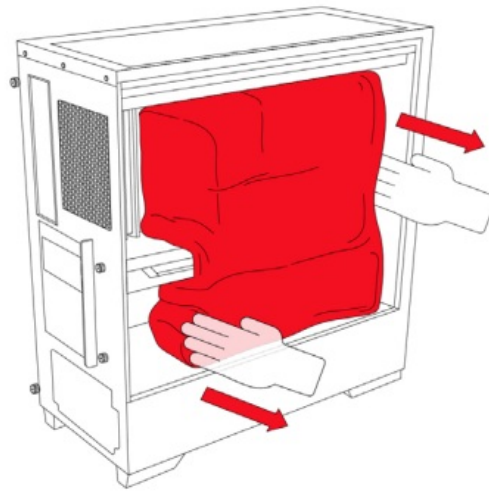
### STEP 2

Checking internal cables and connections ensures that everything is in its proper place and ready to function optimally.

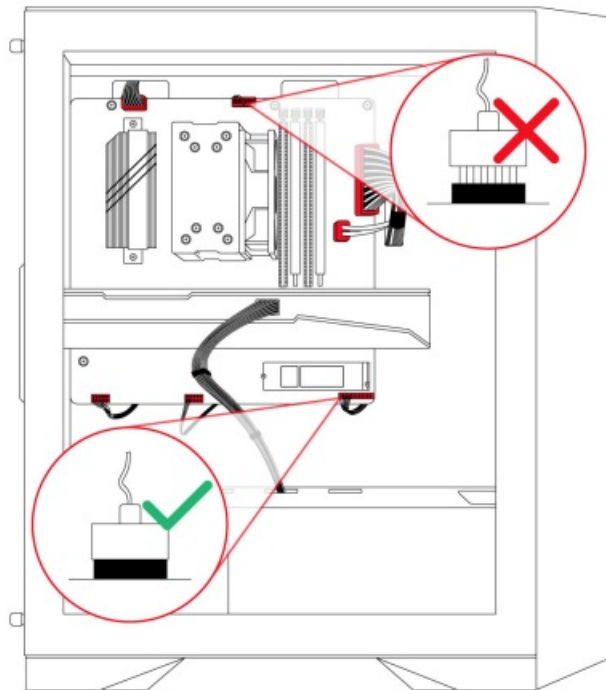


### CAREFULLY

remove the protective foam before turning on PC.

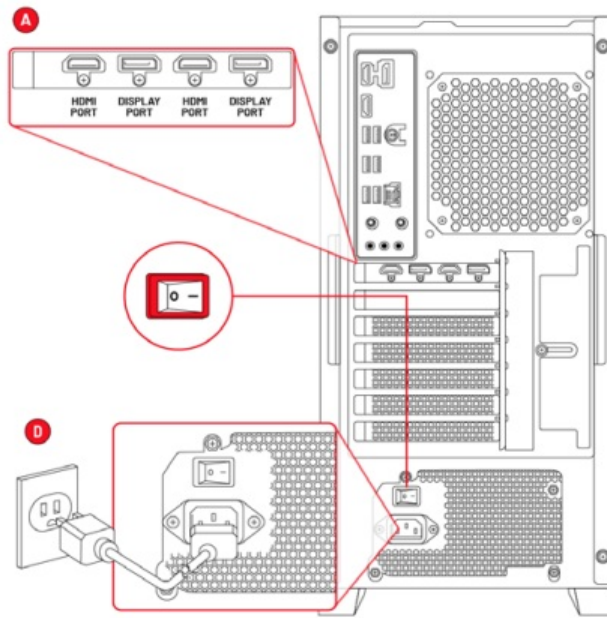


**Note:** Removing protective foam may disconnect cables. Refer to the next step



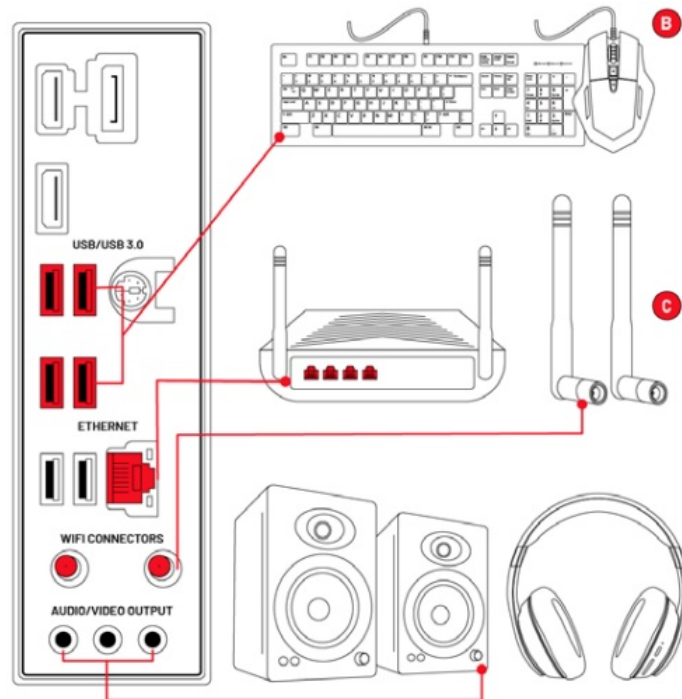
### STEP 3

Connecting the power cord and peripherals properly is essential for the system to operate. The peripherals may include a monitor, keyboard, mouse, Wi-Fi antennas, and possibly other devices like a headset or external hard drive.



**NEED MORE HELP? OR WANT TO UNLOCK ANOTHER YEAR OF WARRANTY?**  
 SCAN THE QR CODES WITH YOUR PHONE OR TABLET TO REGISTER YOUR NEW PC.

- Make sure to connect your monitor's display cable to a port from the graphics card of your PC, which is typically horizontally arranged and around the middle or lower part of the PC's back.
- **Note:** Amount of HDMI and Display ports will vary\*\* Flipping the rocker switch on the back of your PC from "O" to "I" to allow power to flow through the system and then Turning on the PC using the power button, usually located on the top of your case, on the tower is the final step in the setup process, bringing your system to life.
- The position of the power button will vary by model.



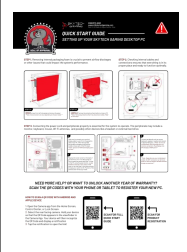
- Connect peripherals such as mouse, keyboard, speakers, headset, and network to appropriate ports. \*\*Note: Do not use motherboard HDMI & Display ports for monitor connection.
- Plug Displays into GPU Display & HDMI ports
- **Note:** Depending on your motherboard model, the WiFi connector can be found either on the I/O shield or beneath the GPU display connections\*\*

## HOW TO SCAN A QR CODE WITH ANDROID AND APPLE DEVICE



1. Open the Camera app from the Home Screen, Control Center, or Lock Screen.
  2. Select the rear-facing camera. Hold your device so that the QR Code appears in the viewfinder in the Camera App.
  3. Your device will then recognize the QR Code and display a notification
  4. Tap the notification to open the link!
- 

## Documents / Resources

	<p><a href="#">SKYTECH GAMING Mini Gaming Computer PC Desktop</a> [pdf] User Guide Mini Gaming Computer PC Desktop, Gaming Computer PC Desktop, Computer PC Desktop, P C Desktop, Desktop</p>
---	---

## References

- [User Manual](#)