




skymee AI-C20 Owl Robot User Manual

[Home](#) » [skymee](#) » skymee AI-C20 Owl Robot User Manual 

Contents

- 1 [skymee AI-C20 Owl Robot](#)
- 2 [Packaging items](#)
- 3 [Part description/function description](#)
- 4 [How to install a cat stick \(as shown\)](#)
- 5 [Description of status indicator light](#)
- 6 [Troubleshooting](#)
- 7 [Download and install app](#)
- 8 [Device Binding \(2 options\)](#)
 - 8.1 [Device sharing](#)
- 9 [Documents / Resources](#)
- 10 [Related Posts](#)



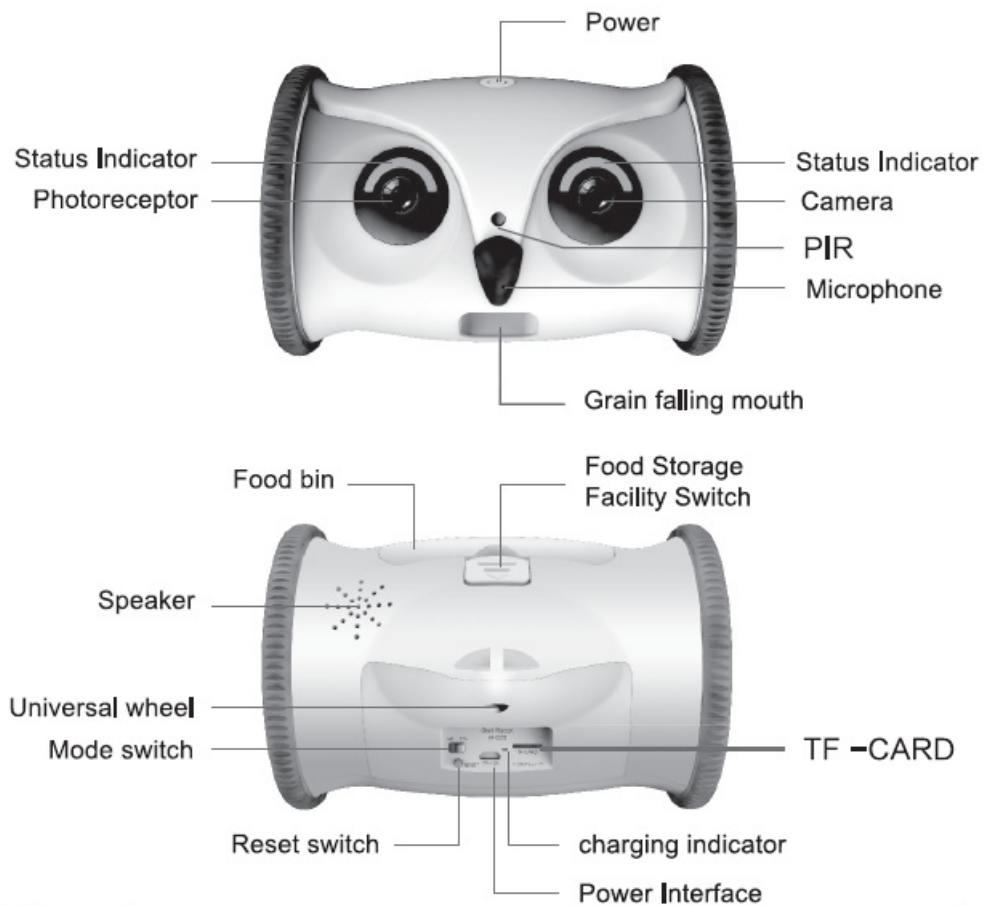
skymee AI-C20 Owl Robot



Packaging items

- Main engine * 1
- Power adapter* 1
- Charging cable * 1
- Universal wheel * 8
- Cat stick* 1
- Granary cover* 1
- Positioning card * 2
- Instruction * 1

Part description/function description



Pet food reserve

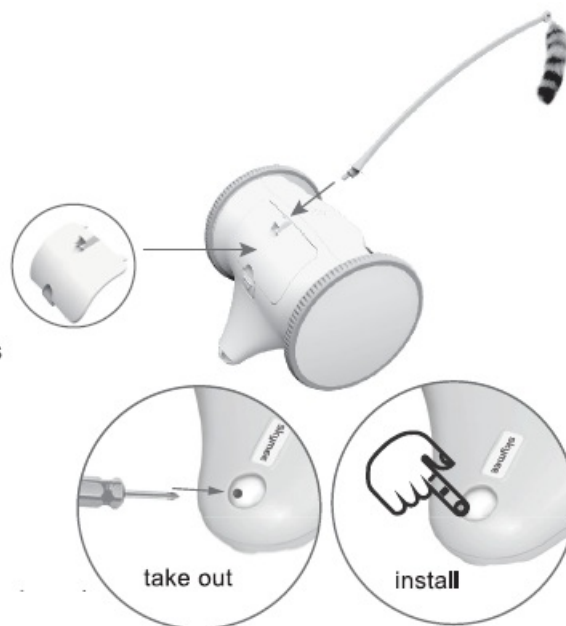
Press the grain bin switch to open the door, put the pet food into the grain bin, and put suitable amount of pet food and close the door.

How to install a cat stick (as shown)

1. Replace the grain barn cover with buckle holes
2. Insert the cat stick into the buckle hole on the cover of the grain barn

Tips:

1. Use pet food of \varnothing 16 mm in diameter.
2. Pet food should not exceed grain bin.
3. Universal wheels are spare and replaceable (as shown)



Description of status indicator light

- **red light:**

The red indicator light on during charging, and off after charging. The red indicator flashes when the voltage is overcharged or the battery does not match.

Slow flash: indicating abnormal equipment, grain blockage and insufficient surplus grain Flash: Short of power.

If the user turns on the device when the power is too low, the red light flashes fast for 1 minute, and then turns off again.

- **blue light:**

Flash: Indicates that the network state can be configured, or connecting network;

Slow flash: in AP mode;

“Always on: Indicates normal network connection.”

Attentions

1. Minimum requirements for equipment use

• Equipment end web requirement

In case of standard resolution, the uplink bandwidth speed is at least 512kbps. In case of high resolution, the uplink bandwidth speed is at least 1 Mkbps.

• app end web:

The uplink bandwidth speed is at least 512kbps for standard resolution and at least 1 Mkbps for high resolution.

2. Do not drop other things other than dry pet food into the bucket, otherwise it will cause abnormal condition of the device and even cause safety problems to the pet. The pet food has a diameter of 7-16MM.
3. Please ensure that any child uses this equipment under the guide of an adult.
4. Do not touch the food outlet in food discharging.
5. Prevent large dogs from damaging equipment.

Troubleshooting

1. Read the two-dimensional code and hear the beep when adding the device, and the device can't be connected. Check whether the Wi-Fi password is correct and then reconnect. (Note if the blue light is flashing. if it is always on, press the device Reset hole for 5 seconds and hear the "beep" sound, the device restores to the addible state)
2. Read the two-dimensional code and hear the beep when adding the device. Check whether the blue light flashes. If the blue light is always on, it indicates that the device has been added, press the device Reset hole for 5 seconds and hear the "beep" sound so that the device can be restored to the addible state and then reconnect.
3. In case of any error in equipment addition, you may have used 5G Wi-Fi for binding. Wireless Wi-Fi supports 2.4GHz frequency band only. 5G Wi-Fi is not supported temporarily. Please adjust for 2.4G Wi-Fi.
4. The real-time pictures are not smooth. Confirm if the web uploading and downloading rates meet the equipment work requirements. If the web rate is too low, you may choose a smooth mode.
5. The equipment displays offline. Check if the web is normal.

Download and install app



App Store

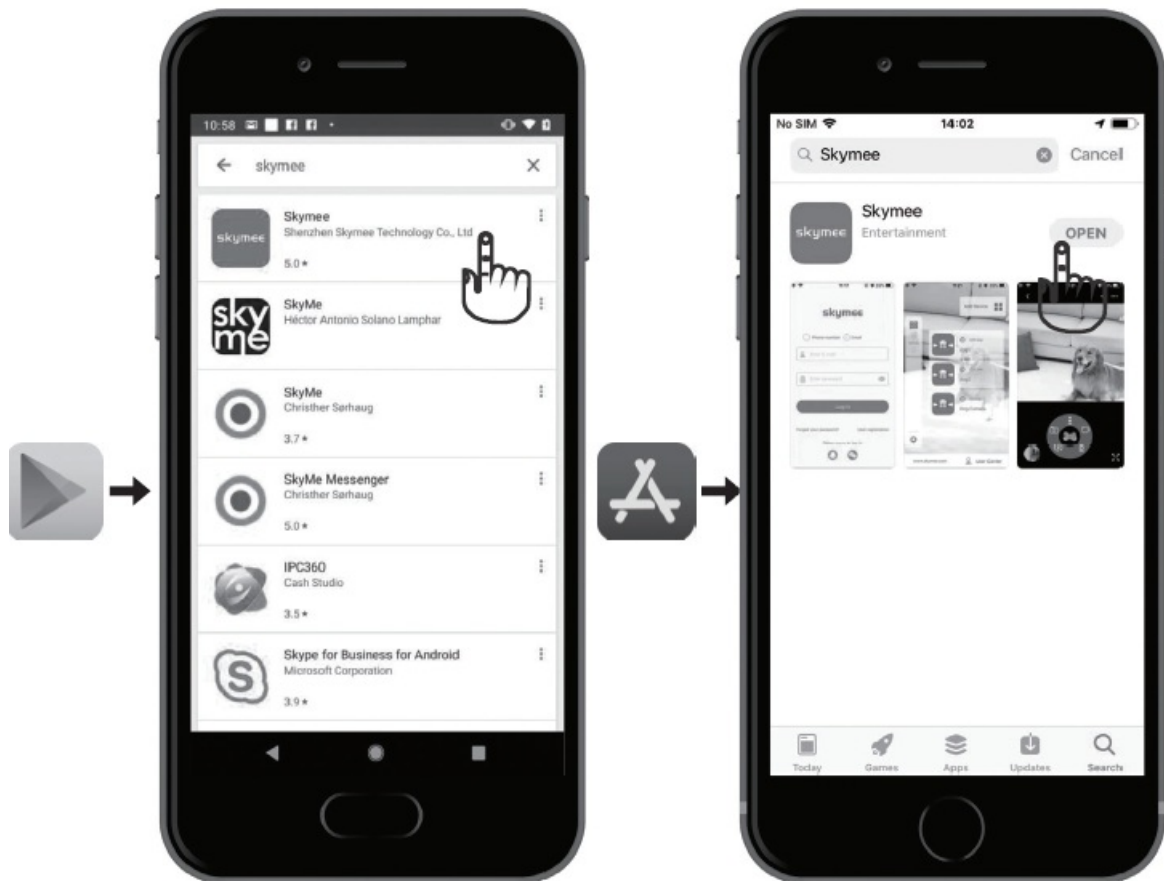


Google play



The mobile phone scans the QR code or logs on the website to download and install the app.





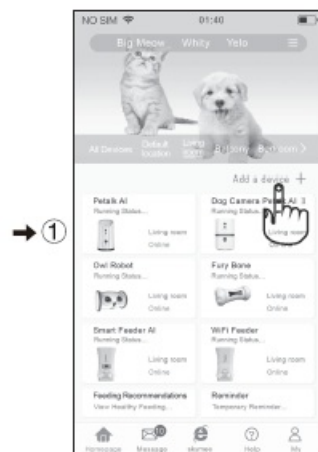
- For Android users, enter Google play to search “skymee” and download.
- For Iphone users, enter App store to search “skymee” and download.

Device Binding (2 options)

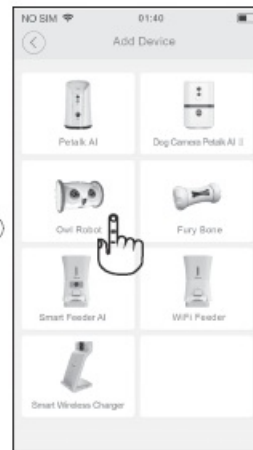
Device sharing

The account of the added device can be shared with other mobile devices to log in, supporting up to 8 persons to log in the account simultaneously, but only one person has the control over the device.

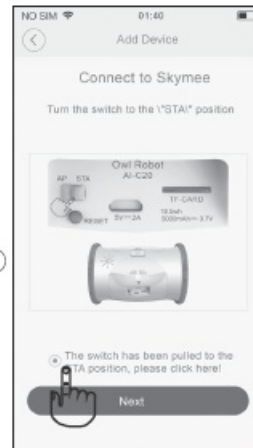
Type 1: WiFi Connection (STA mode) Remote control device



→ ②



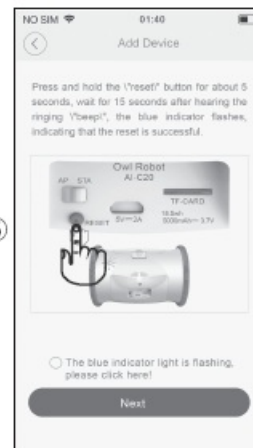
→ ③



→ ④



→ ⑤

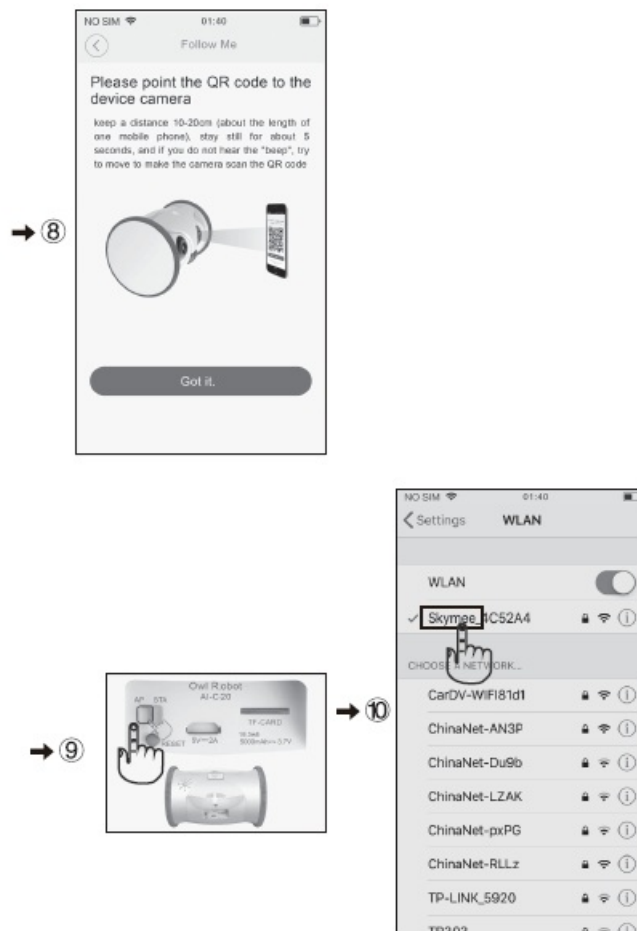


→ ⑥



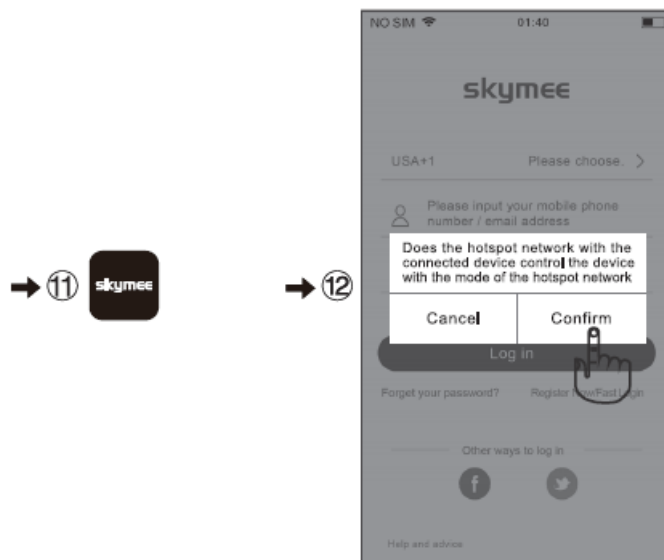
→ ⑦





Type 2: Point-to-Point Connection (AP mode)

Mobile phone directly connects the hot signal of the device, so the device can't be controled remotely.
Device mode switch turns to AP mode, blue light flashes slowly



1. Enter the equipment, video, voice and device control can be normally used;
2. In AP mode, WIFI signal strength is the signal strength from mobile phone to device.
3. In AP mode, all automatic cruising functions are turned off and no automatic cruising functions are performed.

Documents / Resources

skymee
Owl Robot
AI-C20



[skymee AI-C20 Owl Robot](#) [pdf] User Manual

AI-C20, AIC20, 2A4QD-AI-C20, 2A4QDAIC20, AI-C20 Owl Robot, Owl Robot, Robot