



SKYLAB SKW17E WiFi Module User Manual

[Home](#) » [SKYLAB](#) » SKYLAB SKW17E WiFi Module User Manual 

Contents

- [1 SKYLAB SKW17E WiFi Module](#)
- [2 General Description](#)
- [3 Applications](#)
- [4 Features](#)
- [5 Applications Block Diagram](#)
- [6 Pin Description](#)
- [7 PCB Footprint and Dimensions](#)
- [8 Reference design schematic](#)
- [9 Packaging Specification](#)
- [10 Skylab M&C Technology Co., Ltd](#)
- [11 FCC Statement](#)
- [12 Documents / Resources](#)
 - [12.1 References](#)
- [13 Related Posts](#)

SKYLAB

SKYLAB SKW17E WiFi Module



General Description

SKW17 is a 802.11n/ b/g wifi one-stream USB interface designed specifically to provide enhanced WiFi performance and value for home gateways, set-top boxes, gaming consoles, printers, IP cameras, and variety of other products that host processors not originally intended to support WiFi functions. SKW17's AR9271 single-chip features a new architecture that integrates both a CPU and memory to run more of the WiFi function on-chip. The integrated CPU offloads the wireless processing overhead from the host appliance and enables consumer electronic devices to support WiFi functions seamlessly without change of original host processors.

Applications

- Desktop Computer
- Laptop Computer,
- IP Camera
- IP TV
- IP DVD(Internet VOD Player)
- Set Top Box
- Home Gateways
- Gaming Consoles
- Printers

Features

- Compliant to IEEE 802.11b/g/n WLANs
- Security: WEP 64/128, WPA, WPA2, TKIP, AES, WAPI
- Supports for Windows XP 32/64, 2000, Vista 32/64bit, Windows 7 32/64bit, Linux, Android.
- Supported Linux kernel AP/Station/IBSS/Monitor-mode drivers .
- USB 2.0 interface.
- Supports 72.2 Mbps for 20 MHz and 150 Mbps for 40 MHz channel operations.

Skylab M&C Technology Co., Ltd.

- The only one-stream 802.11n solution with one antenna port.
- RoHS compliance meets environment-friendly requirement.
- 18.5(L) x 16.6(W) x 2.75(H) mm small dimension

Applications Block Diagram

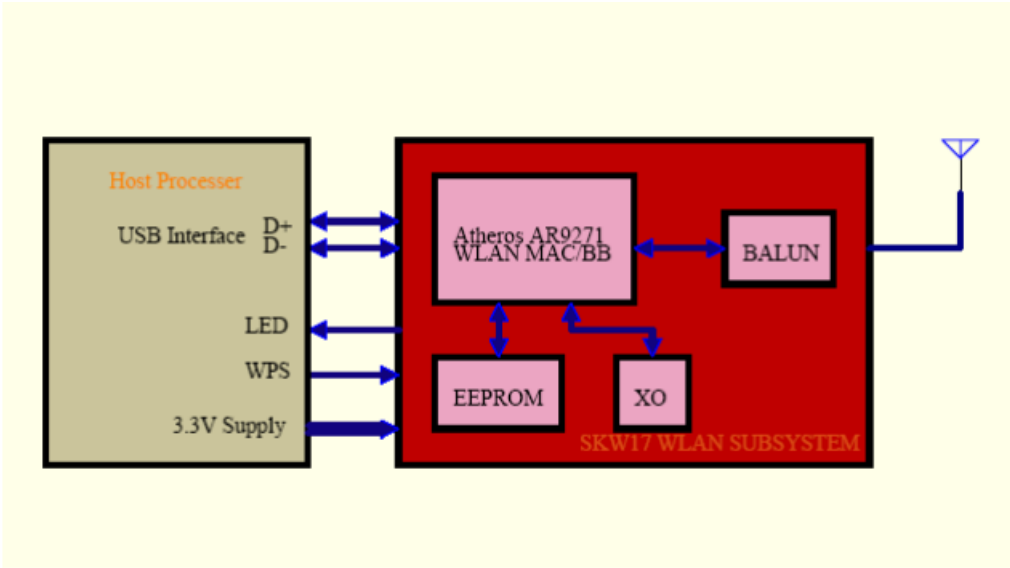


Figure 1: SKW17 Block Diagram

Ordering Information

Module NO.	RF Connector Type	Antenna Option
SKW17	IPEX Connector	Ext Antenna
SKW17P	PCB Pin	Ext Antenna

LED Status

OS	LED status
Linux	LED ON
WINDOWS xp, win7	LED Flashing
ART Test	LED ON

Module Pinout

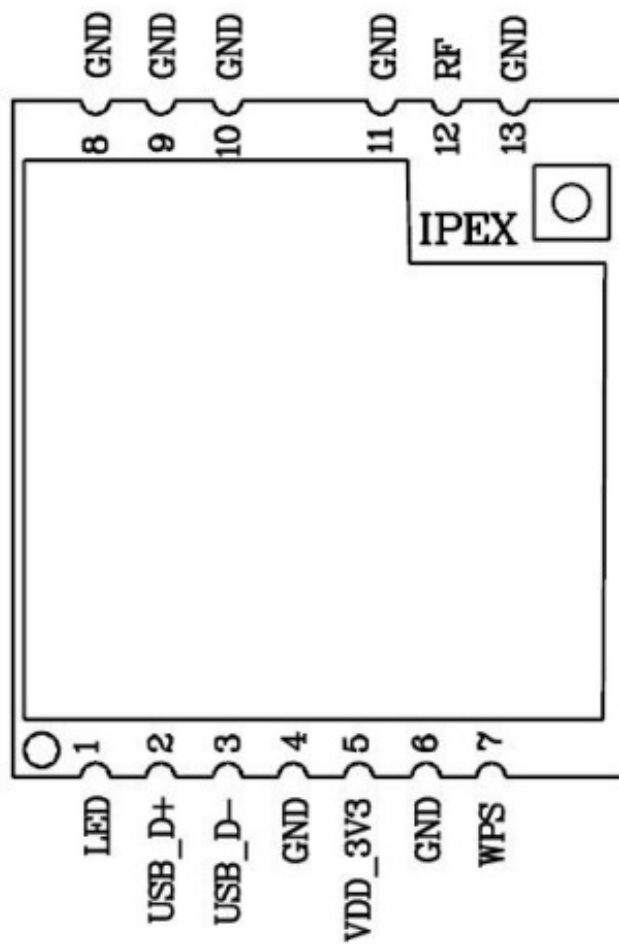


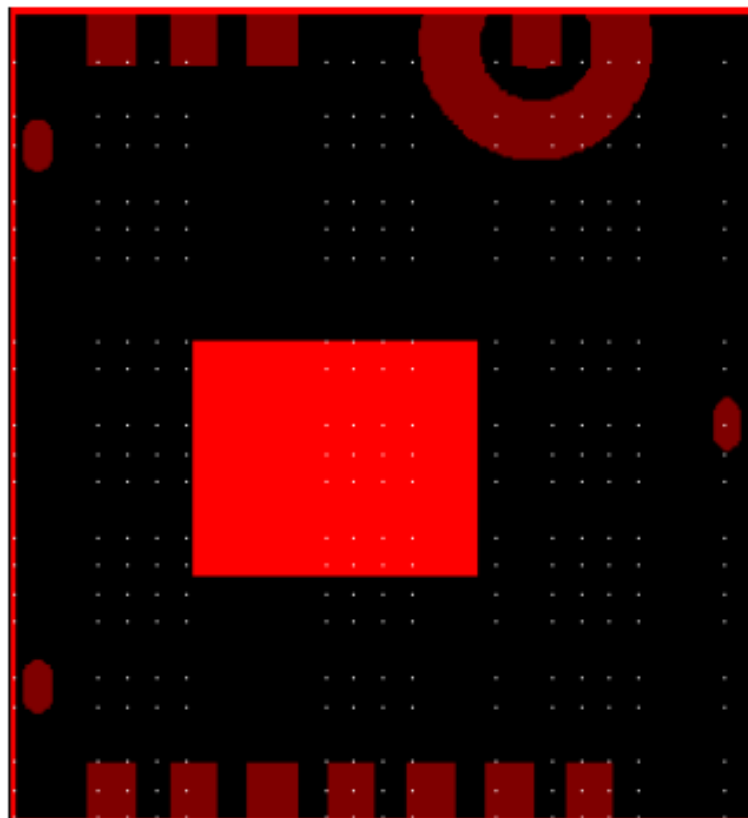
Figure 2: SKW17 Pin Package

Pin Description

Pin No.	Pin name	I/O	Description	Remark
1	LED	O	Light Emitting Diode Driver	up to 24mA
2	USB_D+	I/O	USB Interface DP	

3	USB_D-	I/O	USB Interface DM	
4	GND	G	Ground	
5	VDD_3V3	P	Module Power Supply	
6	GND	G	Ground	
7	WPS	I	Wi-Fi Protected Setup	250 K Ω PU
8	GND	G	Ground	
9	GND	G	Ground	
10	GND	G	Ground	
11	GND	G	Ground	
12	RF	RF port	Antenna	For SKW17A
IPEX	RF	RF port	Antenna Connect	For SKW17
13	GND	G	Ground	

PCB Footprint and Dimensions



BOTTOM PAD

Figure 3: SKW17 Bottom View

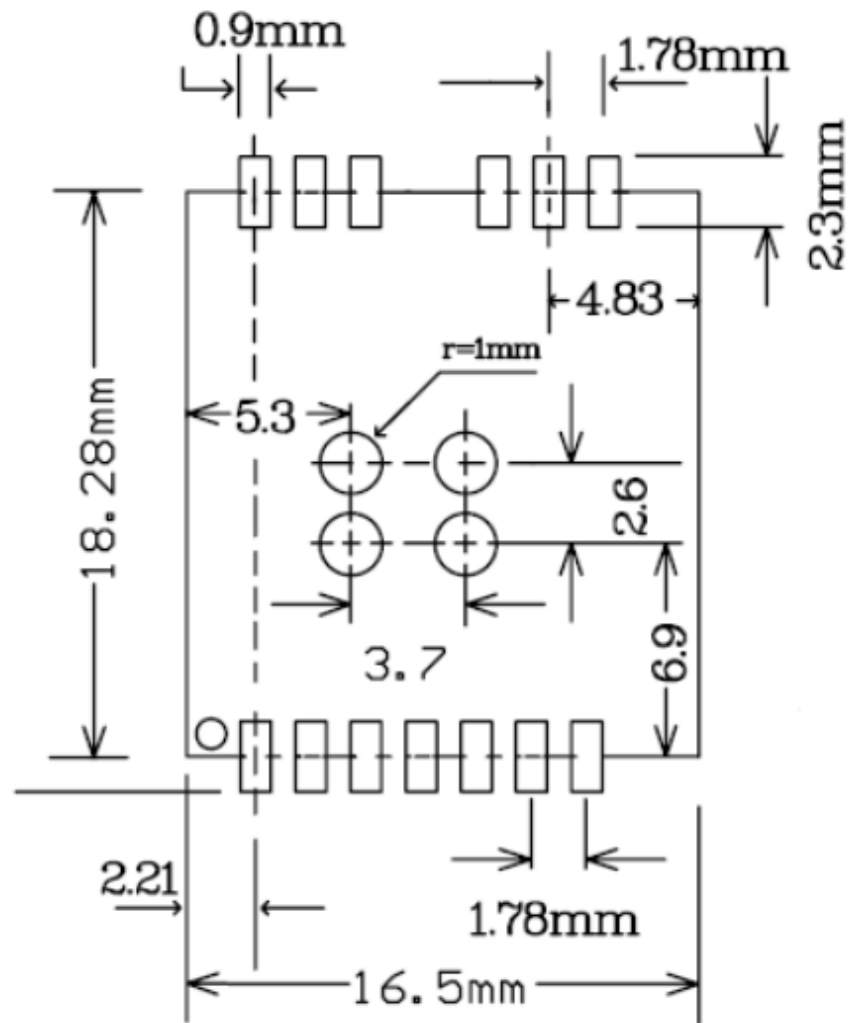


Figure 4: SKW17 Footprint

Reference design schematic

Reference design schematic

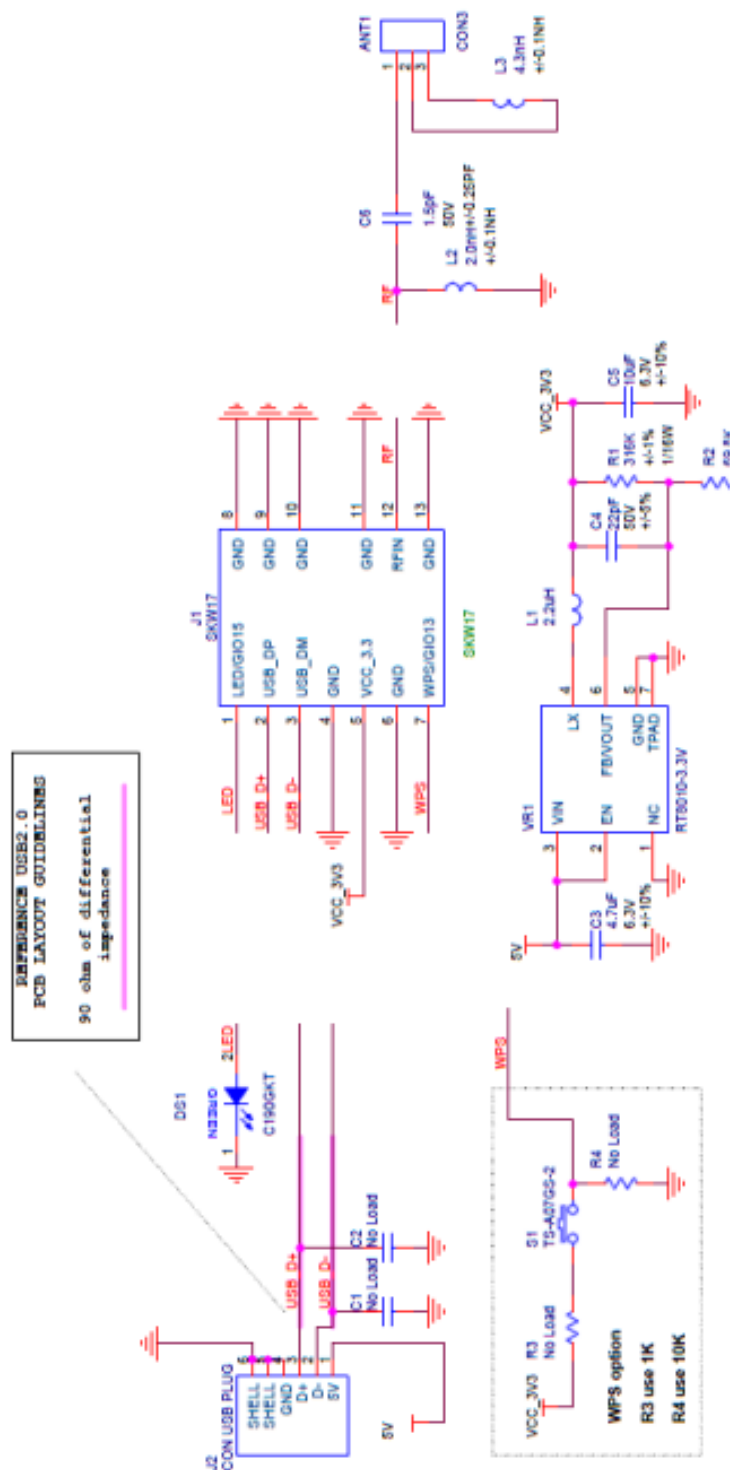


Figure 5: SKW17 Typical Reference design schematic

Packaging Specification

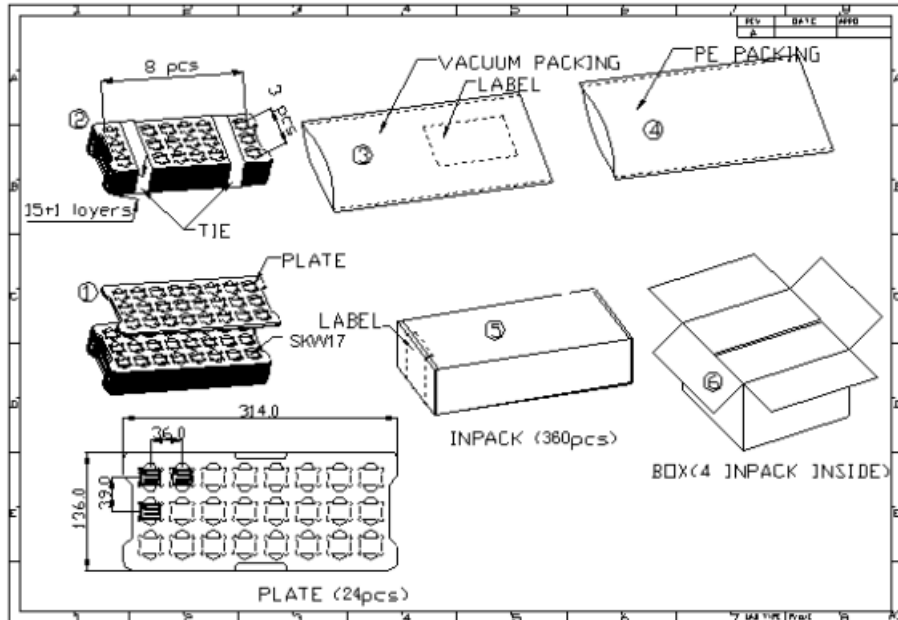


Figure 6: SKW17 Packaging

Skylab M&C Technology Co., Ltd

- Address: 9th Floor, Zhongguang Building, Yayuan Road, Bantian, Shenzhen Phone: 86-755 8340 8210 Sales Support
- Phone: 86-755 8340 8510 Technical Support
- Fax: 86-755-8340 8560
- E-Mail: sales1@skylab.com.cn
- Website: www.skylab.com.cn

FCC Statement

FCC standards: FCC CFR Title 47 Part 15 Subpart C Section 15.247 External antenna with gain 1.8dBi Changes or modifications not expressly approved by the party responsible for compliance could void the user's authority to operate the equipment. This equipment has been tested and found to comply with the limits for a Class B digital device, pursuant to Part 15 of the FCC Rules. These limits are designed to provide reasonable protection against harmful interference in a residential installation. This equipment generates uses and can radiate radio frequency energy and, if not installed and used in accordance with the instructions, may cause harmful interference to radio communications. However, there is no guarantee that interference will not occur in a particular installation. If this equipment does cause harmful interference to radio or television reception, which can be determined by turning the equipment off and on, the user is encouraged to try to correct the interference by one or more of the following measures:

- Reorient or relocate the receiving antenna.
- Increase the separation between the equipment and receiver.
- Connect the equipment into an outlet on a circuit different from that to which the receiver is connected.
- Consult the dealer or an experienced radio/TV technician for help

This device complies with part 15 of the FCC rules. Operation is subject to the following two conditions (1) this device may not cause harmful interference, and (2) this device must accept any interference received, including interference that may cause undesired operation. RF Exposure Compliance: This equipment complies with FCC radiation exposure limits set forth for an uncontrolled environment. This equipment should be installed and

operated with a minimum distance of 20cm between the radiator and any part of your body. Notice to OEM integrator If the FCC ID is not visible when the module is installed inside another device, then the outside of the device into which the module is installed must also display a label referring to the enclosed module. The end product shall have the words "Contains Transmitter Module FCC ID: 2ACOE-SKW17". The device must be professionally installed. The intended use is generally not for the general public. It is generally for industry/commercial use. The connector is within the transmitter enclosure and can only be accessed by disassembly of the transmitter that is not normally required. The user has no access to the connector. Installation must be controlled. Installation requires special training. Any company of the host device which installs this modular with unlimited modular approval should perform the test of radiated & conducted emission and spurious emission, etc. according to FCC part 15C: 15.247 and 15.209 & 15.207, 15B Class B requirement, only if the tests result comply with FCC part 15C: 15.247 and 15.209 & 15.207, 15B Class B requirement, then the host can be sold legally. When the module is installed inside another device, the user manual of the host contains below

1. This device may not cause harmful interference.
2. This device must accept any interference received, including interference that may cause undesired operation

Documents / Resources

A large, light blue rectangular area with a faint, large watermark text that reads "SKYLAB SKW17E WiFi Module [pdf] User Manual". The watermark is centered and spans most of the width and height of the blue area.

References

-  **GPS** **WiFi**