

SKYDANCE R2 10 Key CCT Zigbee 3.0 Remote Controller



SKYDANCE R2 10 Key CCT Zigbee 3.0 Remote Controller Owner's Manual

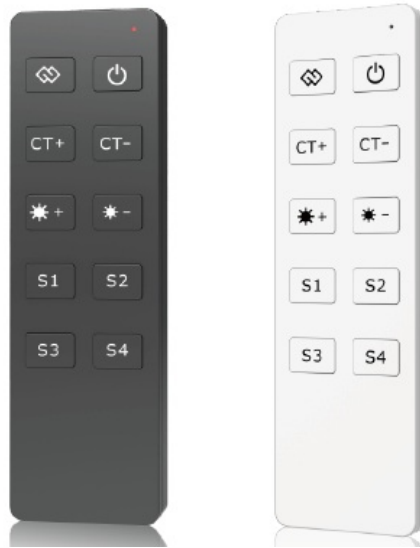
[Home](#) » [SKYDANCE](#) » SKYDANCE R2 10 Key CCT Zigbee 3.0 Remote Controller Owner's Manual 

Contents

- [1 SKYDANCE R2 10 Key CCT Zigbee 3.0 Remote Controller](#)
- [2 Features](#)
- [3 Technical Parameters](#)
- [4 Mechanical Structures and Installations](#)
- [5 App Operating Instructions](#)
- [6 Documents / Resources](#)
 - [6.1 References](#)
- [7 Related Posts](#)



SKYDANCE R2 10 Key CCT Zigbee 3.0 Remote Controller



Features

- Apply to Zigbee 3.0 dual color LED controller or driver.
- Built-in Tuya Zigbee 3.0 remote module, supports scenario linkage and one-click execution.
- Each remote can match one or more receiver.
- CR2032 battery powered.
- Operate with LED indicator light.
- White & Black available.

Technical Parameters

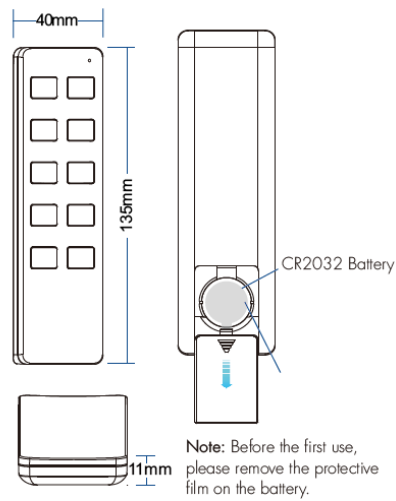
Input and Output	
Output signal	Zigbee 3.0
Working voltage	3VDC(CR2032)
Working current	<15mA
Standby current	<16μA
Standby time	1 year
Remote distance	30m(Barrier-free space)

Safety and EMC

EMC standard (EMC)	ETSI EN 301 489-1 V2.2.3 ETSI EN 301 489-17 V3.2.4
Safety standard(LVD)	EN 62368-1:2020+A11:2020
Radio Equipment(RED)	ETSI EN 300 328 V2.2.2
Certi cation	CE,EMC,LVD,RED

Environment	
Operation temperature	Ta: -30 OC ~ +55 OC
Package	
Size	L138x W50 x H22mm
Gross weight	0.064kg
Warranty	
Warranty	5 years

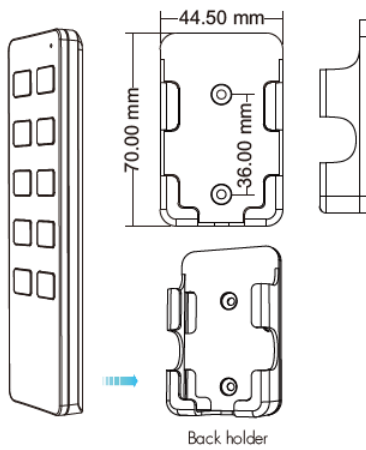
Mechanical Structures and Installations



Back holder

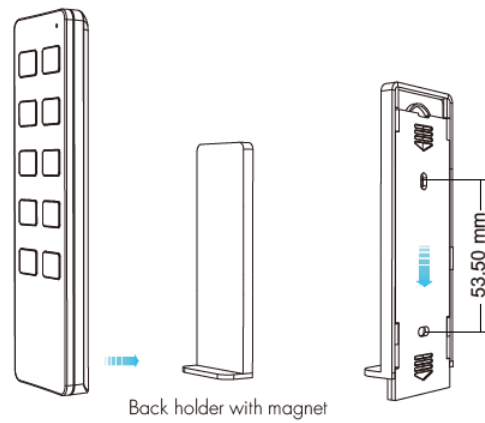
Two options are offered for selection, please fix the remote' back holder on the wall with two screws, or adhere the remote' back holder to the wall with paster.

1. Back holder without magnet

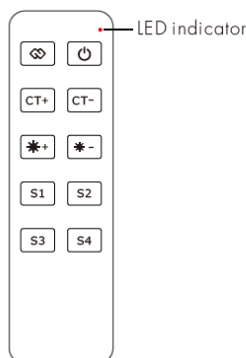


2. Back holder with magnet

(The remote need to be customized with built-in magnets)



Key function



- : Turn on/off light.
- : Network pairing
- : Adjust color temperature, short press 11 levels, 10% step.
- : Adjust brightness, short press 11 levels, 10% step.
- : Short press to recall the scene 1-4.

Before use the remote, please edit the scene setting through Tuya APP firstly.

Before use the remote, please edit the scene setting through Tuya APP firstly.

App Operating Instructions

1. Network pairing

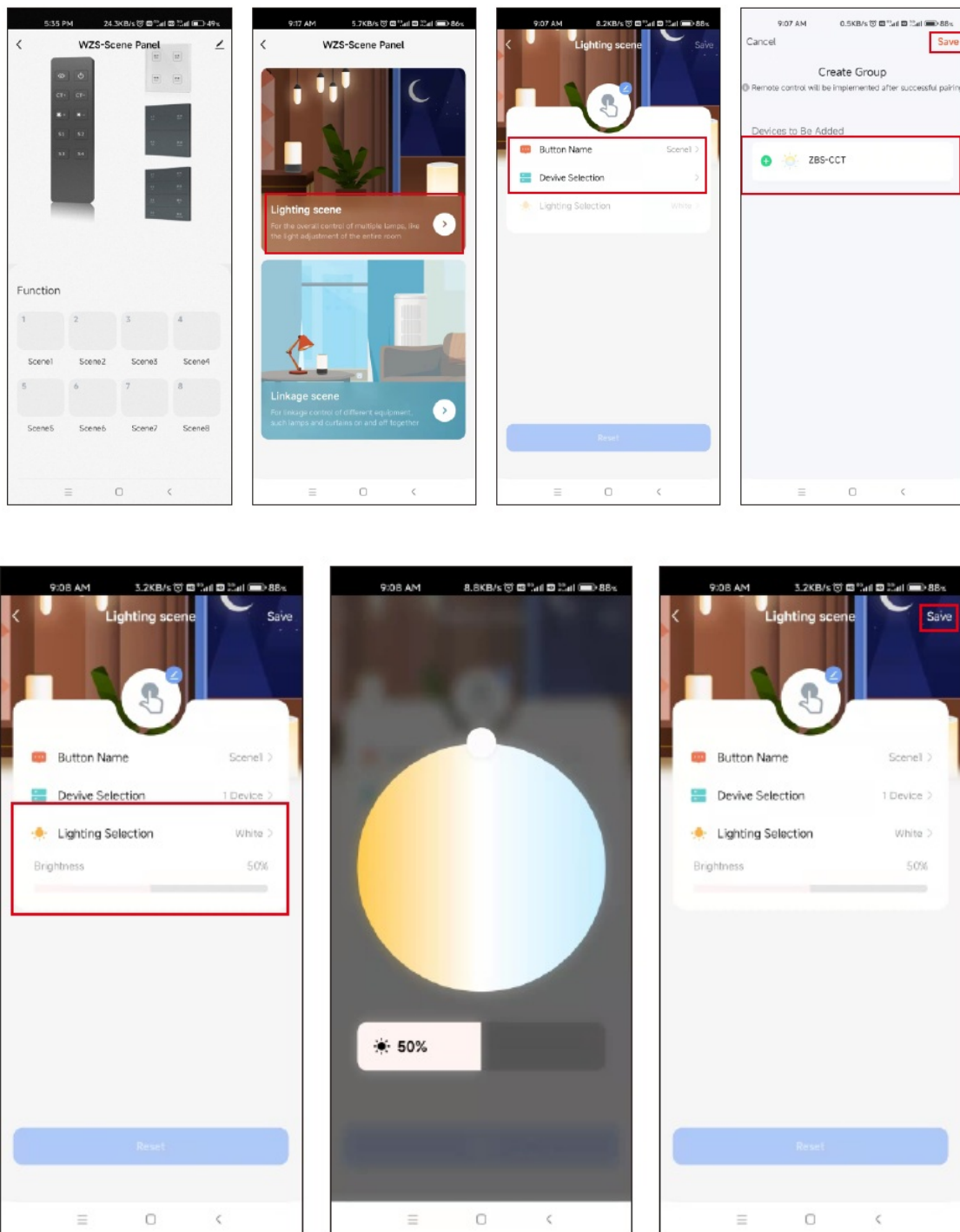
- Download the Tuya APP and register an account, search and add the Tuya Zigbee gateway device.
- Press and hold the “Network pairing” button until the LED indicator light flashes. Under the gateway, you can find WZS-Scene Panel device in Tuya APP. After successful network pairing, the indicator light will be on for 2 seconds and then off.
- Under the gateway, search and add one or more ZBS-CCT light devices.
- Remote unpairing: Delete the WZS-Scene Panel device from the tuya APP.

2. Remote association and scene settings

There are 8 scenes in the Tuya APP, which can be set to lighting scenes or linkage scenes. Lighting scene is used for the overall control of multiple lamps, like the light adjustment of the entire room. Linkage scene is used for linkage control of different equipment, such lamps and curtains on and off together.

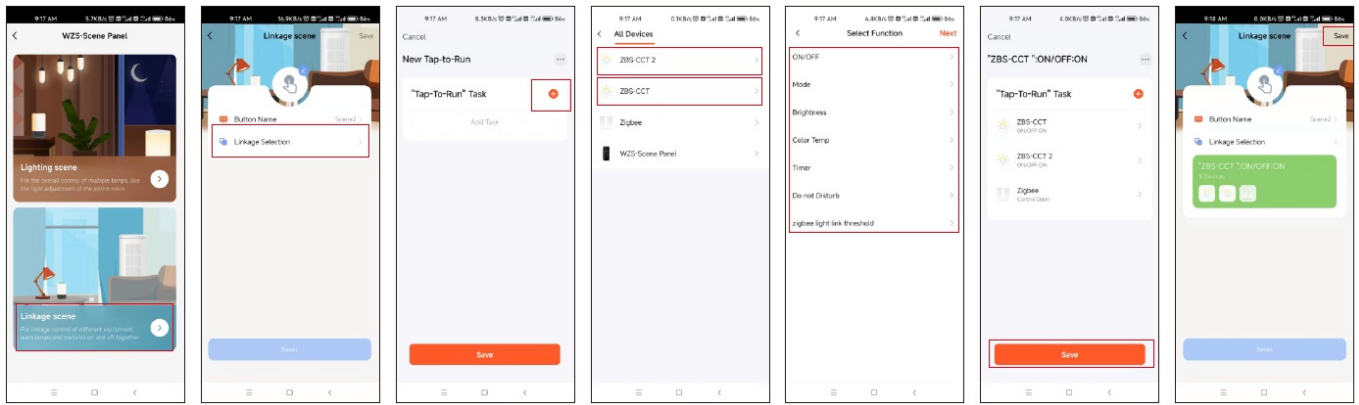
Example 1, set scene 1 for synchronous light control of the whole room:

1. Select scene 1 and open the lighting scene settings.
2. You can change the scene name, add one or more devices, adjust brightness and color temperature, then save it.
3. After successful setting, you can use the remote to control these lamps directly



Example 2, set scene 2 to set up a scenario where different lamps or curtains are controlled together with different color or on/off state.

1. Select Scene 2 and open the linkage scene settings.
2. You can change the scene name, add “one-click execution” tasks, select the devices that need to be linked, save the required functions, such as ON/OFF, mode, brightness and color temperature.
3. After successful setup, you can use the remote to directly control all linked devices to the desired scene.



Note:

- The scene1-4 in Tuya APP is correspond to the scene 1-4 key on the remote.
- To delete the scene function, you can select “Reset” in the scene settings.

Safety information

1. Read all instructions carefully before you begin this installation.
2. When installing battery, pay attention to the battery positive and negative polarity. A long time without the remote control, remove the battery. When remote distance becomes smaller and insensitive, replace the battery.
3. Gently handle remote, beware of falling.
4. For indoor and dry location use only.

Documents / Resources

	<p>SKYDANCE R2 10 Key CCT Zigbee 3.0 Remote Controller [pdf] Owner's Manual R2 10 Key CCT Zigbee 3.0 Remote Controller, R2 10, Key CCT Zigbee 3.0 Remote Controller, Z igbee 3.0 Remote Controller, Remote Controller, Controller</p>
--	--

References

- [User Manual](#)

Manuals+, Privacy Policy

This website is an independent publication and is neither affiliated with nor endorsed by any of the trademark owners. The "Bluetooth®" word mark and logos are registered trademarks owned by Bluetooth SIG, Inc. The "Wi-Fi®" word mark and logos are registered trademarks owned by the Wi-Fi Alliance. Any use of these marks on this website does not imply any affiliation with or endorsement.