



SKYDANCE PK3 Rotary Panel RF Remote Controller User Manual

[Home](#) » [SKYDANCE](#) » SKYDANCE PK3 Rotary Panel RF Remote Controller User Manual 

Contents

- [1 SKYDANCE PK3 Rotary Panel RF Remote Controller](#)
- [2 Product Overview](#)
- [3 Features](#)
- [4 Technical Parameters](#)
- [5 Warranty](#)
- [6 Safety and EMC](#)
- [7 Environment](#)
- [8 Mechanical Structures and Installations](#)
- [9 Installation Diagram](#)
- [10 Knob function](#)
- [11 Match Remote Control \(two match ways\)](#)
- [12 Safety information](#)
- [13 Documents / Resources](#)
 - [13.1 References](#)
- [14 Related Posts](#)



SKYDANCE PK3 Rotary Panel RF Remote Controller



Product Overview

Model No.: PK1, PK2, PK3

Rotary dimming/1-3 color/Wireless remote 30m distance/CR2032 battery



PK1
1 Zone Dimming



PK2
1 Zone CCT



PK3
1 Zone RGB

Features

- Apply to a single color, dual color or RGB LED controller.
- Rotate the knob to change RGB color, color temperature, or brightness, support long press or twice click operation.
- Each remote can match one or more receivers.
- CR2032 battery powered.
- Removeable and stick anywhere easily, or mount on wall use panel base.

Technical Parameters

Input and Output	
Output signal	RF(2.4GHz)
Working voltage	3VDC(CR2032)
Working current	< 5mA
Standby current	< 10μA
Standby time	1 year
Remote distance	30m(Barrier-free space)

Warranty

Warranty	5 years
----------	---------

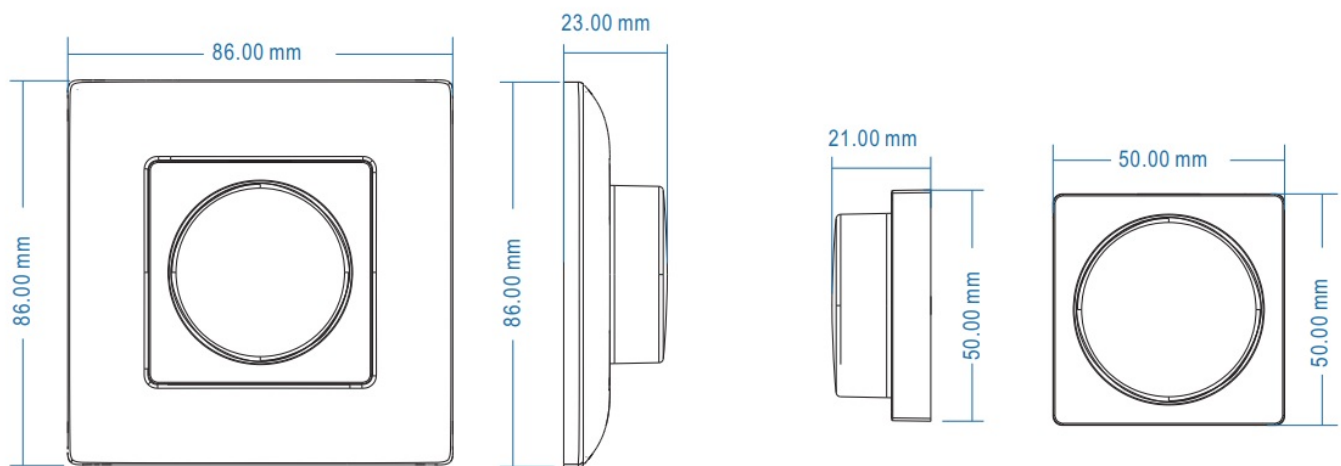
Safety and EMC

EMC standard (EMC)	ETSI EN 301 489-1 V2.2.3 ETSI EN 301 489-17 V3.2.4
Safety standard(LVD)	EN 62368-1:2020+A11:2020
Radio Equipment(RED)	ETSI EN 300 328 V2.2.2
Certification	CE,EMC,LVD,RED

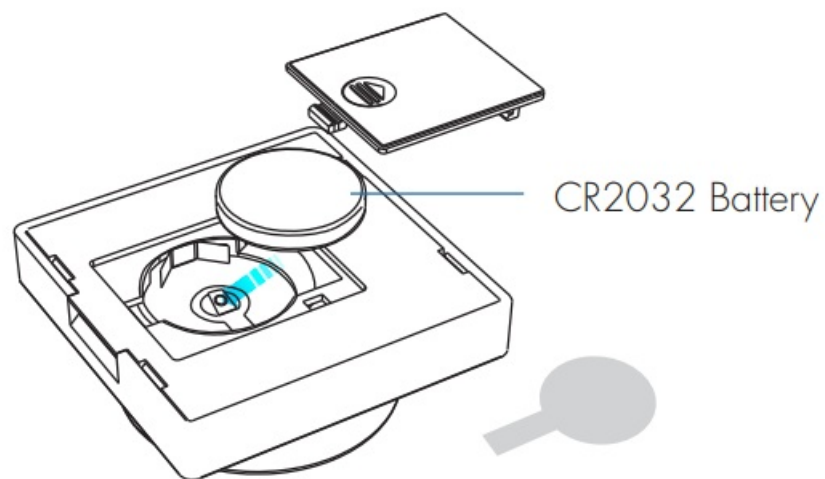
Environment

Operation temperature	Ta: -30℃ ~ +55℃
IP rating	IP20

Mechanical Structures and Installations

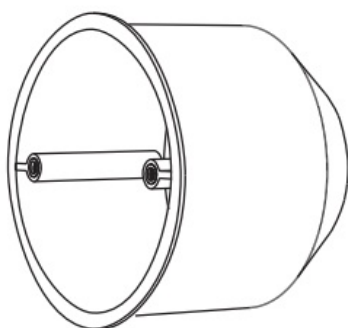


Replace battery:

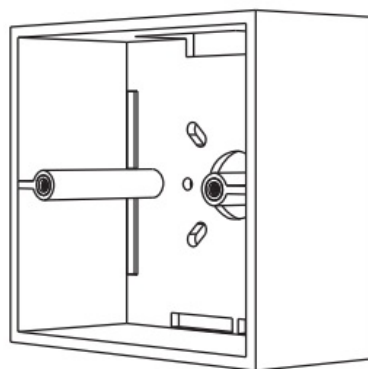


Note: Before the first use, please remove the protective film on the battery.

Typical base is as below:

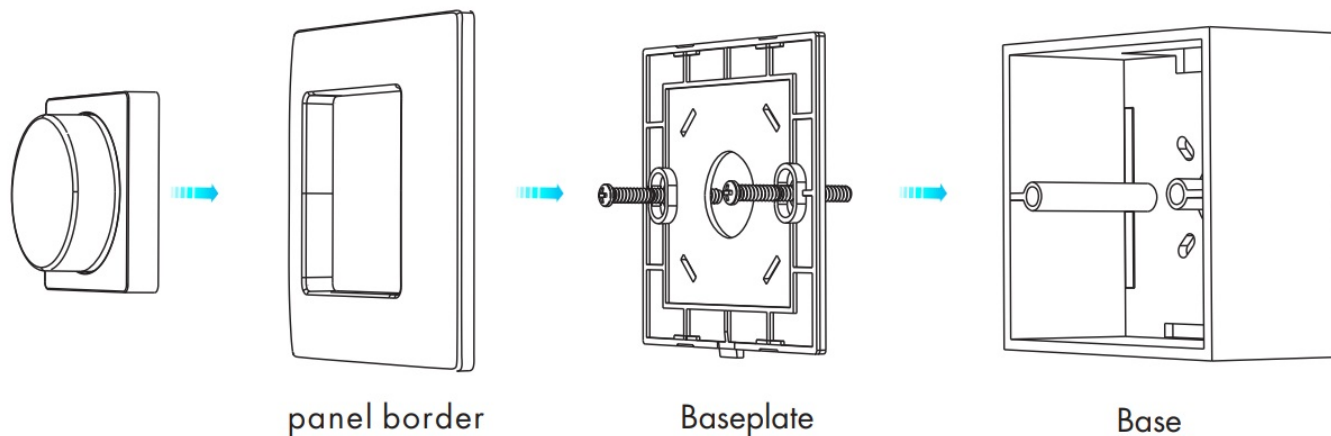


European style



86 size

Installation Diagram



To fix the panel, two options are offered for selection:

Option 1: fix it on the wall with two screws.

Option 2: adhere it to the wall with a paster.

Knob function

PK1 Single color dimming remote

- **Push:** Turn on or off the light.

After turning on the light:

- **Rotate:** Rotate the knob to adjust brightness(2.5 turns, 50 levels).
- **Long push(1-6s):** Continuous 256 levels of brightness adjustment

PK2 Color temperature remote

- **Push:** Turn on or off the light.

After turning on the light:

- **Rotate:** Rotate the knob to change the color temperature or brightness (2.5 turns, 50 levels).
- **Push twice:** Switch between color temperature or brightness adjustment.
- **Long push(1-6s):** Continuous 256 levels of brightness adjustment.

PK3 RGB remote

- **Push:** Turn on or off the light.

After turning on the light:

- **Rotate:** Rotate the knob to change RGB color (3 turns, 60 colors) or brightness (2.5 turns, 50 levels).
- **Push twice:** Switch between RGB color or brightness adjustment.
- **Long push(1-6s):** Continuous 256 levels of brightness adjustment

Match Remote Control (two match ways)

The end user can choose the suitable match/delete ways. Two options are offered for selection:

Use the controller's Match key

Match: Short press the match key, and immediately push the knob. The LED indicator fast flash a few times means the match is successful.

Delete: Press and hold the match key for 5s to delete all match, The LED indicator fast flash a few times means all matched remotes were deleted

Use Power Restart

Match: Switch off the power, then switch on the power, repeat again. Immediately push the knob 3 times. The light blinks 3 times means the match is successful.

Delete: Switch off the power, then switch on the power, repeat again. Immediately push the knob 5 times. The light blinks 5 times means all matched remotes were deleted.

Safety information

1. Read all instructions carefully before you begin this installation.
2. When installing the battery, pay attention to the battery's positive and negative polarity. A long time without the remote control, remove the battery. When remote distance becomes smaller and insensitive, replace the battery.
3. If no response from the receiver, please re-match the remote.
4. Gently handle the remote, beware of falling.
5. For indoor and dry locations use only

Documents / Resources



[SKYDANCE PK3 Rotary Panel RF Remote Controller](#) [pdf] User Manual
PK3, PK1, PK2, Rotary Panel RF Remote Controller

References

- [Sklep ELED - oświetlenie LED na miarę Twoich potrzeb](#)