



SKYCATCH SKC-EX2-01 Explore 2 and Secure Controller Instruction Manual

[Home](#) » [SKYCATCH](#) » SKYCATCH SKC-EX2-01 Explore 2 and Secure Controller Instruction Manual 

Contents

- [1 SKYCATCH SKC-EX2-01 Explore 2 and Secure Controller](#)
- [2 FCC Compliance Notice](#)
- [3 Skycatch Support](#)
- [4 Documents / Resources](#)
 - [4.1 References](#)
- [5 Related Posts](#)

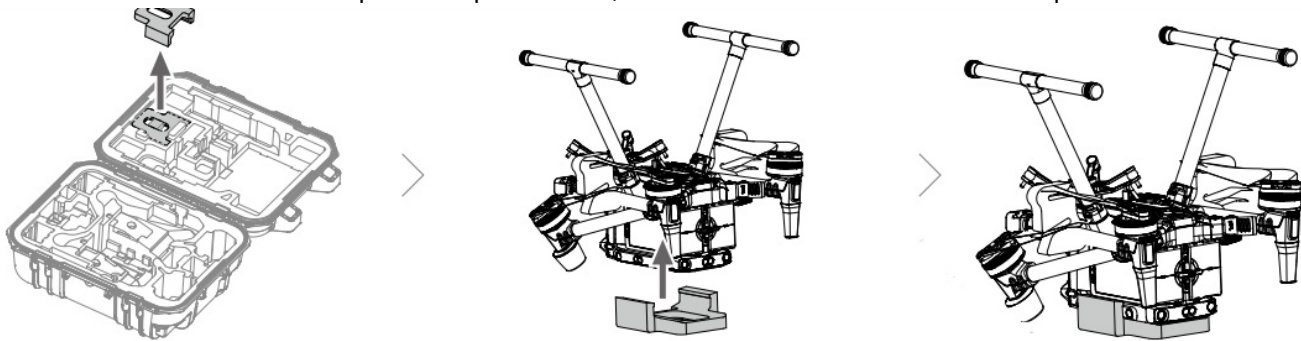


SKYCATCH SKC-EX2-01 Explore 2 and Secure Controller



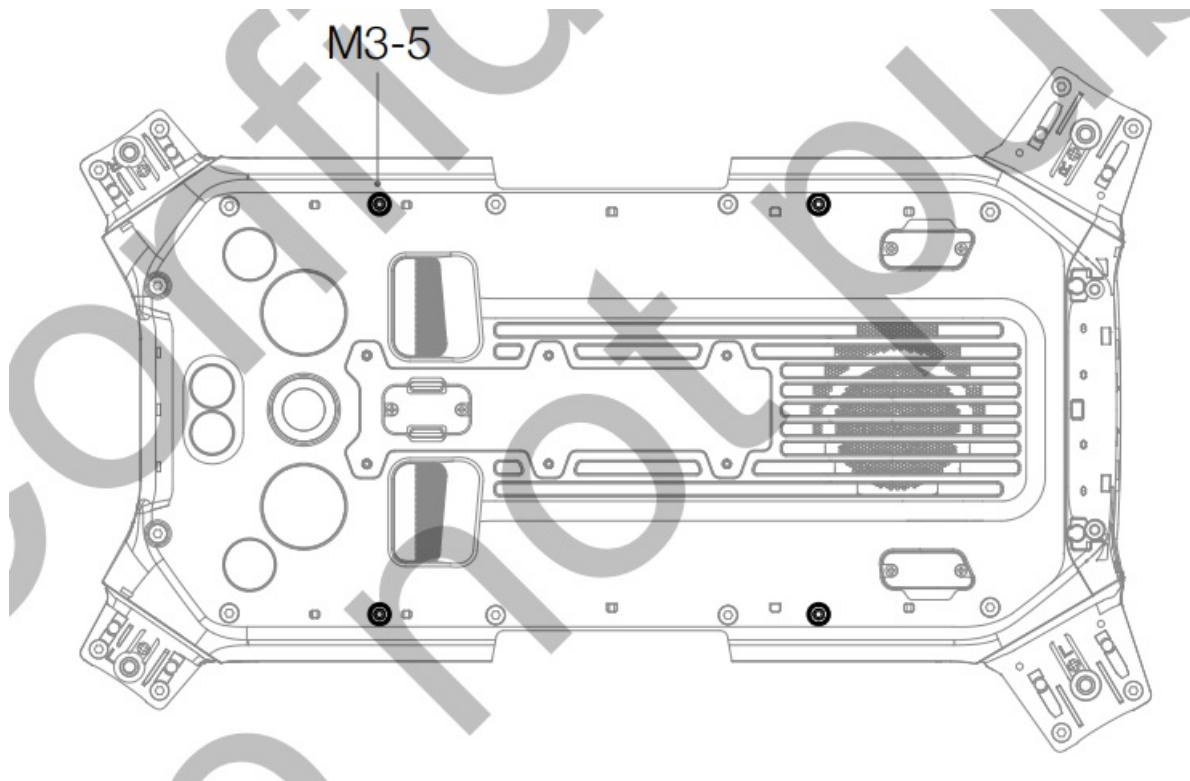
Using the Aircraft Cradle

Once the aircraft needs to be operated upside down, make sure to use aircraft cradle for protection.



Extended Screw Holes Description

Use the specified screw to avoid damage to the thread of the screw hole. Make sure that the accessories are firmly installed.



FCC Compliance Notice

Supplier's Declaration of Conformity

- **Product name:** Skycatch Explore2/ Skycatch Secure Controller
- **Model Number:** SKC-EX2-01/ SKC-SC-01
- **Responsible Party:** Skycatch, Inc.
- **Responsible Party Address:** 424 9th St San Francisco CA 94103
- **Website:** www.skycatch.com

We, Skycatch, Inc., being the responsible party, declares that the above mentioned model was tested to demonstrate complying with all applicable FCC rules and regulations. This device complies with Part 15 of the FCC Rules. Operation is subject to the following two conditions:

1. This device may not cause harmful interference,

2. This device must accept any interference received, including interference that may cause undesired operation.

Any changes or modifications not expressly approved by the party responsible for compliance could void the user's authority to operate the equipment.

This equipment has been tested and found to comply with the limits for a Class B digital device, pursuant to part 15 of the FCC Rules. These limits are designed to provide reasonable protection against harmful interference in a residential installation. This equipment generates, uses and can radiate radio frequency energy and, if not installed and used in accordance with the instructions, may cause harmful interference to radio communications. However, there is no guarantee that interference will not occur in a particular installation. If this equipment does cause harmful interference to radio or television reception, which can be determined by turning the equipment off and on, the user is encouraged to try to correct the interference by one or more of the following measures:

- Reorient or relocate the receiving antenna.
- Increase the separation between the equipment and receiver.
- Connect the equipment into an outlet on a circuit different from that to which the receiver is connected.
- Consult the dealer or an experienced radio/TV technician for help.

RF Exposure Information

The aircraft complies with FCC radiation exposure limits set forth for an uncontrolled environment. In order to avoid the possibility of exceeding the FCC radio frequency exposure limits, human proximity to the antenna shall not be less than 20cm during normal operation. This transmitter must not be co-located or operating in conjunction with any other antenna or transmitter.

This remote controller complies with FCC radiation exposure limits set forth for an uncontrolled environment. End user must follow the specific operating instructions for satisfying RF exposure compliance. This transmitter must not be co-located or operating in conjunction with any other antenna or transmitter.

The portable device is designed to meet the requirements for exposure to radio waves established by the Federal Communications Commission (USA). These requirements set a SAR limit of 1.6 W/kg averaged over one gram of tissue. The highest SAR value reported under this standard during product certification for use when properly worn on the body.

These requirements set a SAR limit of 4 W/kg averaged over ten gram of tissue. The highest SAR value reported under this standard during product certification for use when properly worn on the limbs.

ISED Compliance Notice

This device contains licence-exempt transmitter(s)/receiver(s) that comply with Innovation, Science and Economic Development Canada's licence-exempt RSS(s). Operation is subject to the following two conditions:

1. This device may not cause interference.
2. This device must accept any interference, including interference that may cause undesired operation of the device

The remote control for operation in the band 5150–5250 MHz is only for indoor use to reduce the potential for harmful interference to co-channel mobile satellite systems;


Skycatch Support

<https://support.skycatch.com/>

This content is subject to change.

If you have any questions about this document, please contact Skycatch by sending a message to support@skycatch.com.

Documents / Resources

	<p>SKYCATCH SKC-EX2-01 Explore 2 and Secure Controller [pdf] Instruction Manual SKCSC01, 2AOLP-SKCSC01, 2AOLPSKCSC01, SKC-EX2-01, SKC-SC-01, SKC-EX2-01 Explore 2 and Secure Controller, Explore 2 and Secure Controller, Secure Controller, Controller</p>
---	---

References

- [🔗 Drone Mapping Software for Mining and Construction | Skycatch™](#)