



SKY LINK KN-MT Security Keypad Alarms Instruction Manual

[Home](#) » [SKY LINK](#) » SKY LINK KN-MT Security Keypad Alarms Instruction Manual 



INSTALLATION INSTRUCTIONS
Security Keypad
Model: KN-MT



Congratulations on your purchase of the Skylink Security Keypad, Model: KN-MT. The wireless keypad can arm or disarm your SkylinkNet and M-Series Alarm system from a secondary location in your home.

Contents

- [1 Safety Information](#)
- [2 Package Contents](#)
- [3 Installing the Security Keypad](#)
- [4 Programming the Keypad with M-Series Main Console](#)
- [5 Programming the Keypad with SkylinkNet Internet Hub](#)
- [6 Operation of the Keypad Control](#)
- [7 Changing the Keypad Control Password](#)
- [8 Replacing the Battery](#)
- [9 Troubleshooting M-Series Alert/Alarm System](#)
- [10 Warranty](#)
- [11 Documents / Resources](#)
 - [11.1 References](#)

Safety Information

This device complies with Part 15 of the FCC Rules. Operation is subject to the following two conditions: (1) This device may not cause harmful interference, and (2) This device must accept any interference received, including interferences that may cause undesired operation.

WARNING:

Changes or modifications to this unit not expressly approved by the party responsible for compliance could void the user's authority to operate the equipment.

CE – DECLARATION OF CONFORMITY:

This equipment complies with the requirements relating to electromagnetic compatibility, EN 301489-1, EN301489-3, EN300220-1, EN300220-2 and EN60950-1. This equipment conforms to the essential requirement of the 1999/5/EC R&TTE Directive.

Package Contents



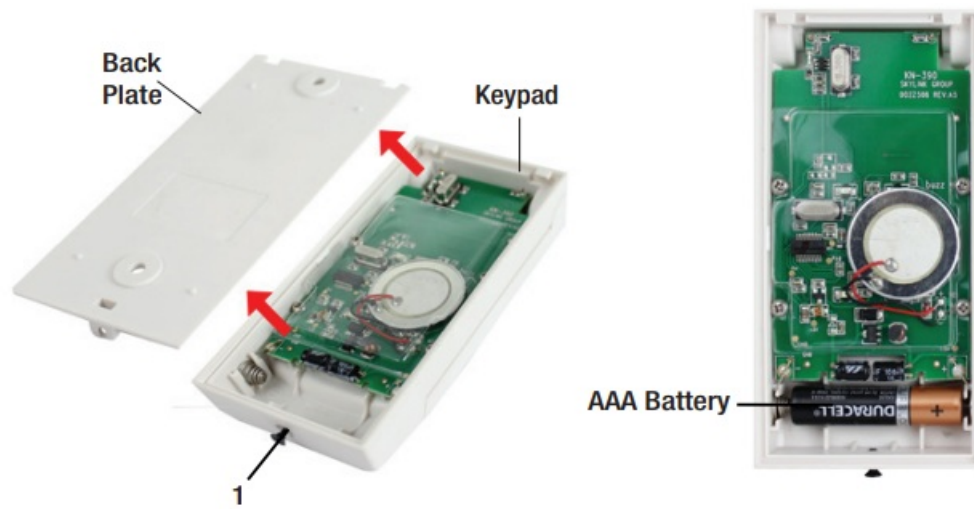
Parts	Description	Quantity
A	Security Keypad	1
B	Screw	2

Installing the Security Keypad



NOTE: The battery for the Security Keypad is not included. Please refer to instruction below to insert an AAA Alkaline Battery.

1. Undo the screw (1) on the bottom side of the Keypad (A) and remove the back plate.



2. Insert an AAA Battery.
3. Mount the back plate with the included screws (B).



4. Attach the Keypad on the back plate and tighten the screw (1) on the bottom of the Keypad.

Programming the Keypad with M-Series Main Console

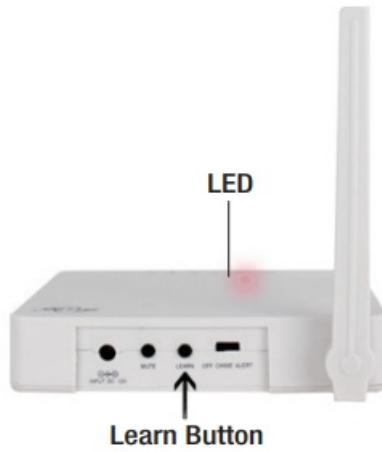


NOTE: You can program in total up to 4 security keychain remotes or keypads to your M-Series Alarm System.



NOTE: The Security Keypads must be programmed in Zone 1.

1. Press the learn button on the back of the M-Series Main Console for 3 seconds until the Zone 1 light is flashing.



2. Input Pin followed by the Disarm button. [Default Pin: 0 0 0 0]



3. Once the keypad is programmed to the M-Series Main Console, the Zone 1 LED light will be off.

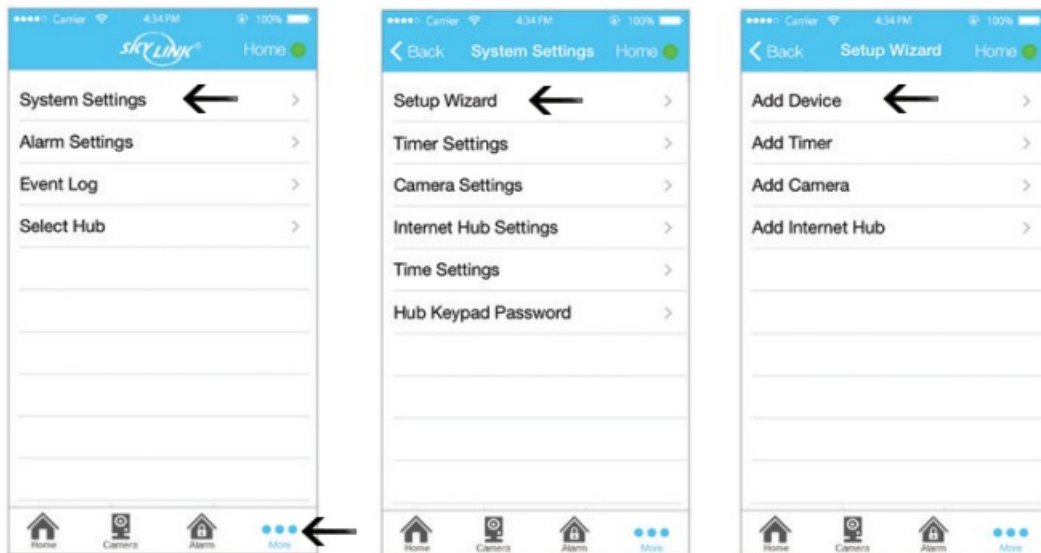


Programming the Keypad with SkylinkNet Internet Hub

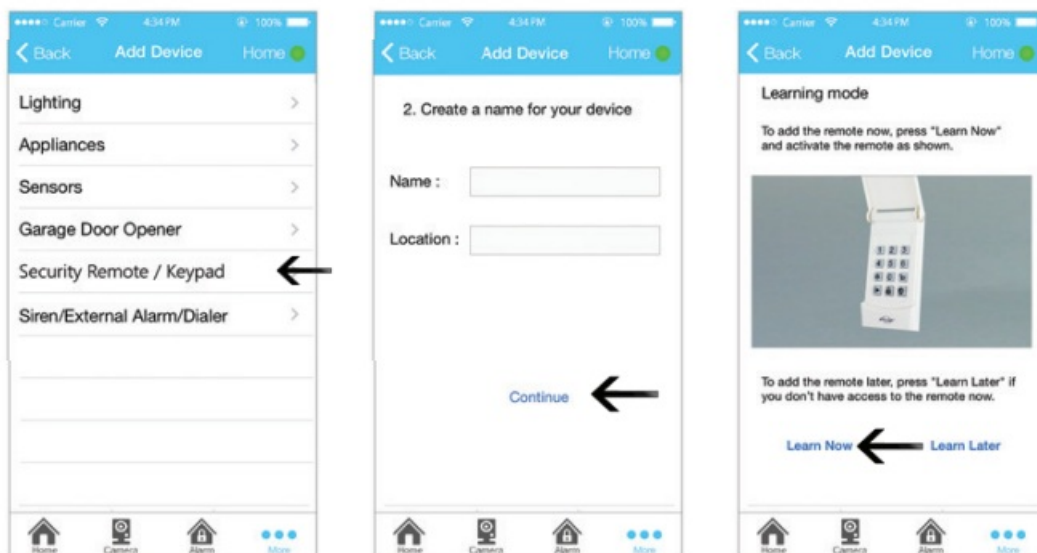


NOTE: Programming the keypad with the SkylinkNet Internet Hub must be done from the SkylinkNet App.

1. Go to "More" and tap on "System Settings".



2. Tap on "Setup Wizard".
3. Tap on "Add Device".
4. Tap on "Security Remote/Keypad".



5. Name your Security Keypad and tap "Continue".
6. Tap on the "Learn Now" button and input the PIN No. followed by the Disarm Button [Default Pin is 0000].

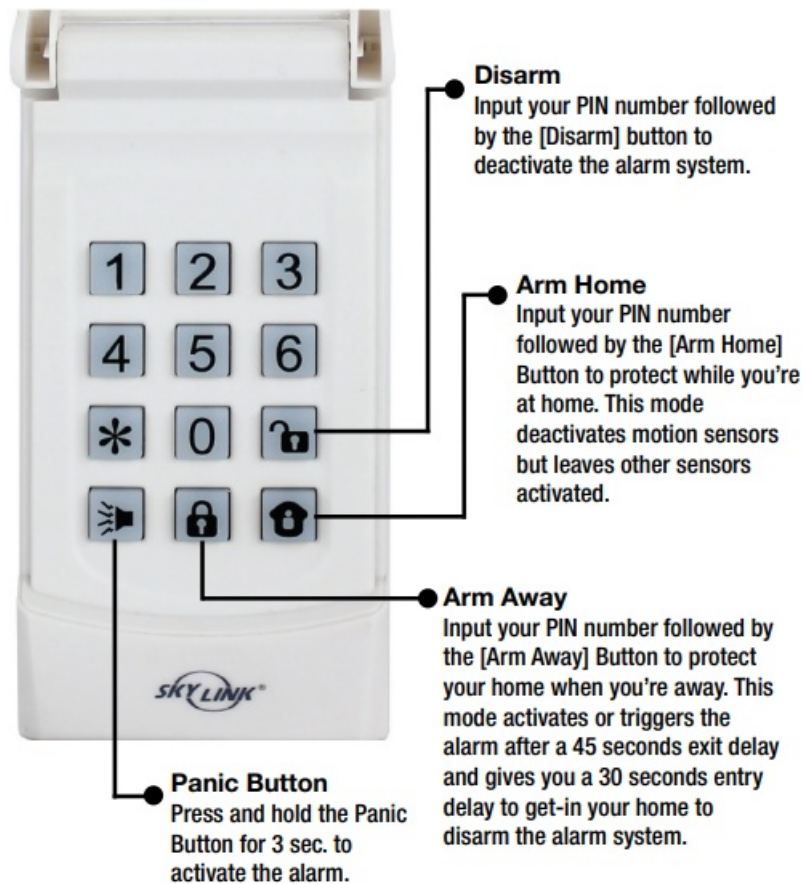
Operation of the Keypad Control



NOTE: The backlight will turn on when pressing the buttons.



NOTE: The factory default password is 0,0,0,0






Changing the Keypad Control Password



NOTE: The factory default password is 0,0,0,0.



NOTE: The password can be 2-8 digits long and with a combination of buttons from 0-6.

1. Input current PIN [factory default 0 0 0 0] and press  button.
2. Input the new PIN number followed by the  button.
3. Input new PIN again and press the  button.

NOTE: If the pin is different from step 2, the keypad will emit a long error beep and you have to re-start from step 1.

NOTE: If the Keypad emits 2 beeps, your pin has been successfully changed.

Replacing the Battery



NOTE: Dispose of old battery promptly and properly.

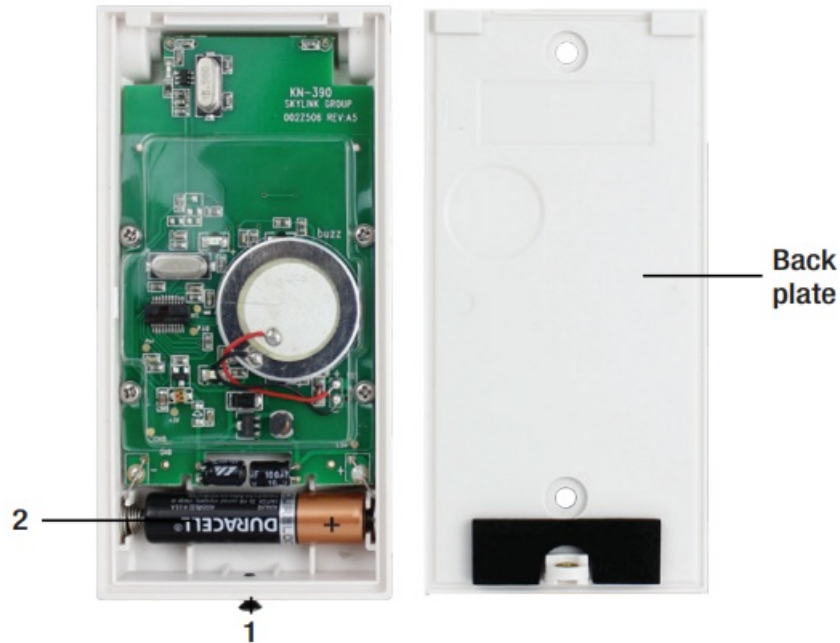


NOTE: The Keypad is powered by an AAA Alkaline Battery.

When the operation range is reduced, or when the backlight LED does not flash during operation, it is time to replace the battery.

Follow the instructions below to replace the battery:

1. Undo the screw (1) on the back plate of the keypad.
2. Pry out the back plate from the keypad.
3. Take out the old battery (2) from the keypad.
4. Place the new battery (2) in position. Beware of the polarity.
5. Close the back plate and re-insert the screw (1).



Troubleshooting M-Series Alert/Alarm System

Problem	Solution
The M-Series Main Console does not respond to the keypad?	<ul style="list-style-type: none"> – You must program the keypad to the M-Series Main Console or the SkylinkNet Internet Hub before they can work together. – Ensure to input the correct password.
Can I erase just one keypad from a zone in the M-Series Main Console?	<ul style="list-style-type: none"> – You must erase all the remotes/sensors and then program the remote/sensors you want to keep.

Warranty

ONE YEAR WARRANTY

This product is guaranteed to be free of defects in materials and workmanship for 1 year from the date of purchase. If this product is defective, call 1-800-304-1187 for repair or replacement parts. Guarantee does not include normal wear and tear or batteries.



If you have any questions, problems or missing parts, please call Skylink Customer Support:
9:00am – 5:00pm EST, Monday-Friday.

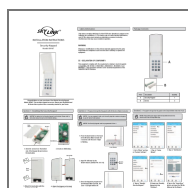
1-800-304-1187

Or e-mail us at support@skylinkhome.com

www.skylinkhome.com

CUSTOMER SERVICE
17 Sheard Avenue,
Brampton, Ontario,
Canada L6Y1J3
P/N : 101Y255 Rev:0
©2014 SKYLINK GROUP.

Documents / Resources



[SKY LINK KN-MT Security Keypad Alarms](#) [pdf] Instruction Manual
KN-MT Security Keypad Alarms, KN-MT, Security Keypad Alarms, Keypad Alarms, Alarms

References

-  [Skylink Products – Skylinkhome](#)
- [User Manual](#)