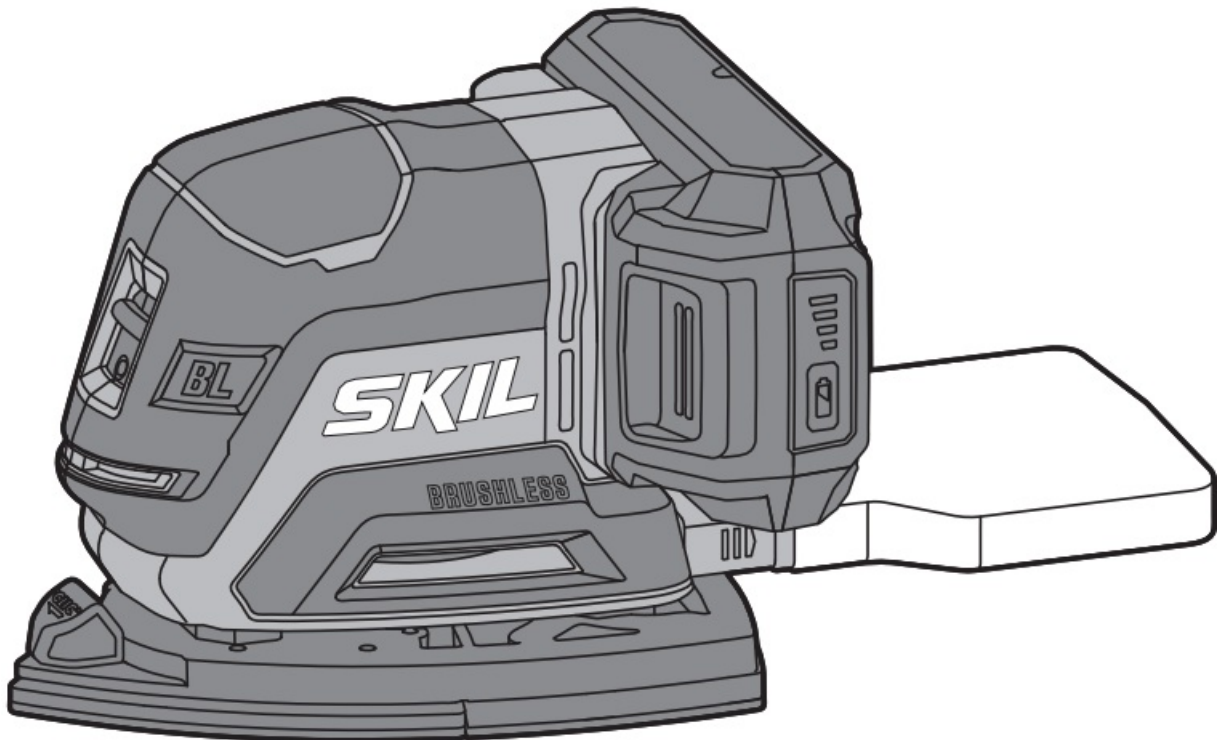




## SKIL SR1E3720FB Brushless Cordless Multi Sander Instruction Manual

[Home](#) » [Skil](#) » SKIL SR1E3720FB Brushless Cordless Multi Sander Instruction Manual 

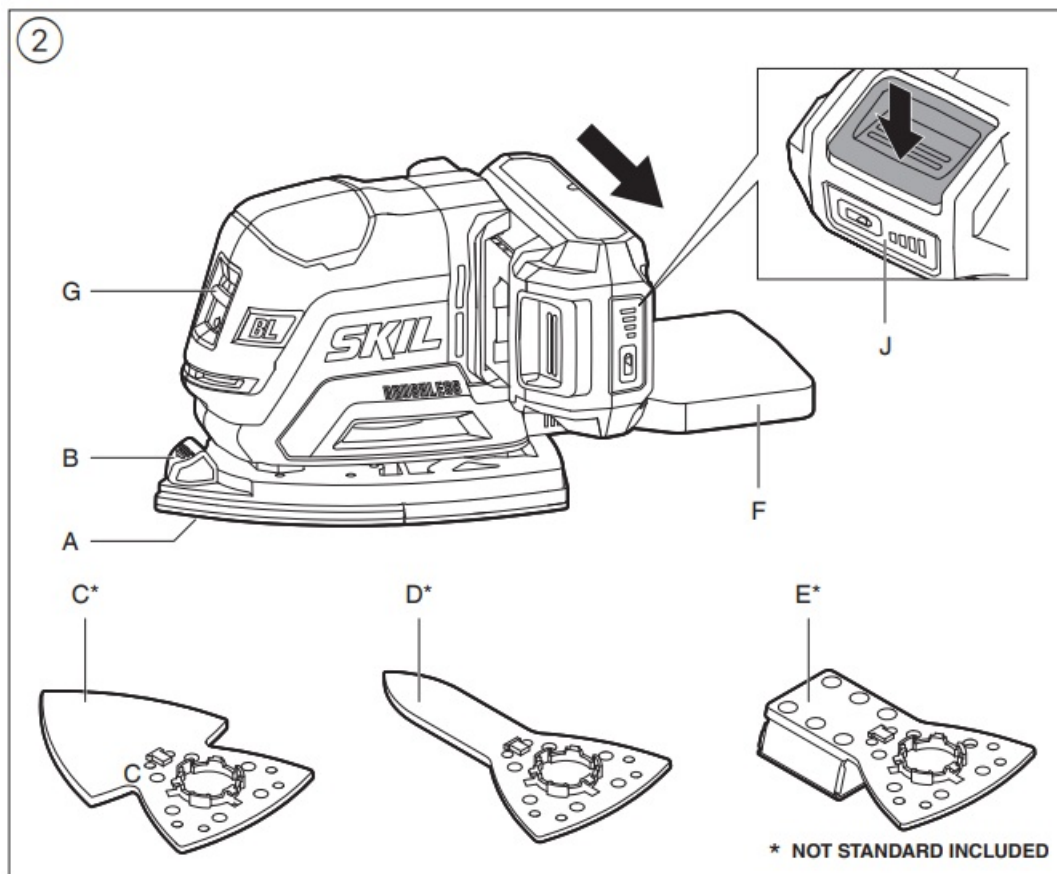
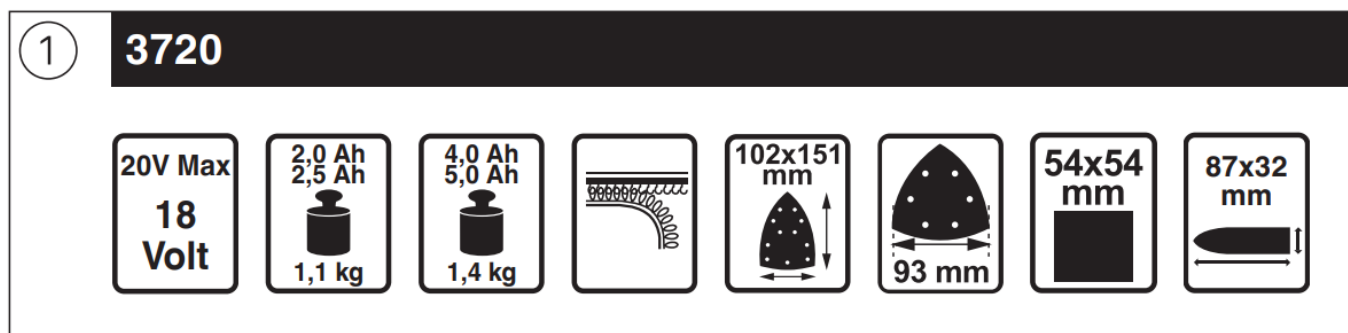
### SKIL SR1E3720FB Brushless Cordless Multi Sander

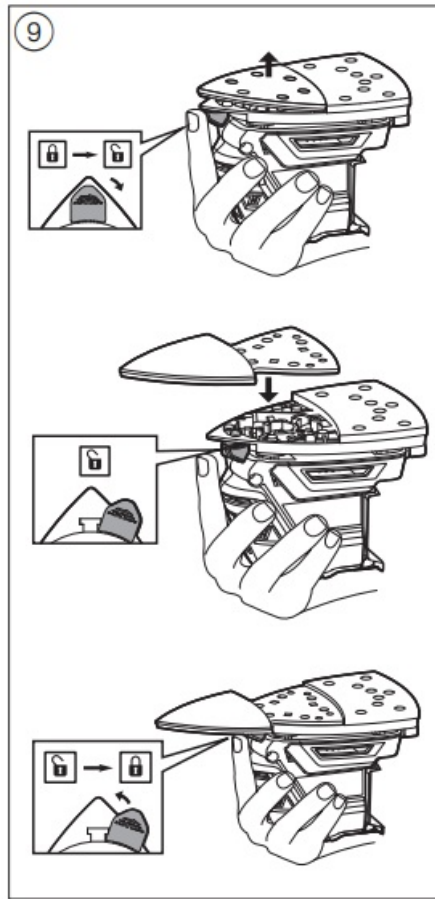
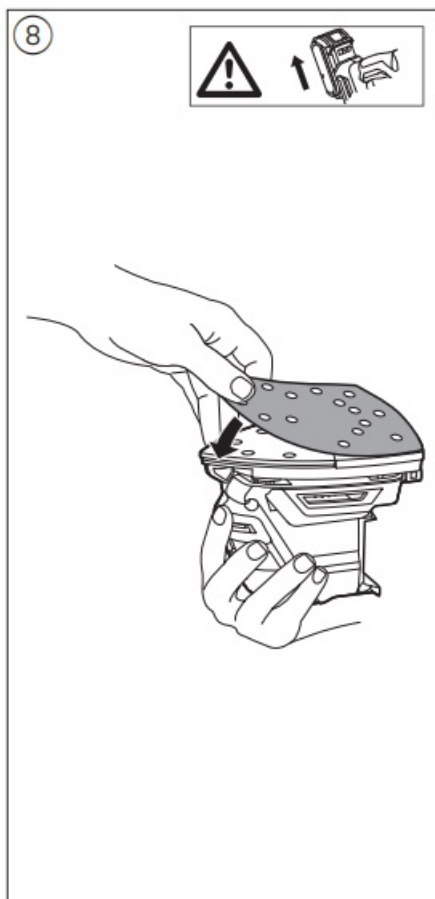
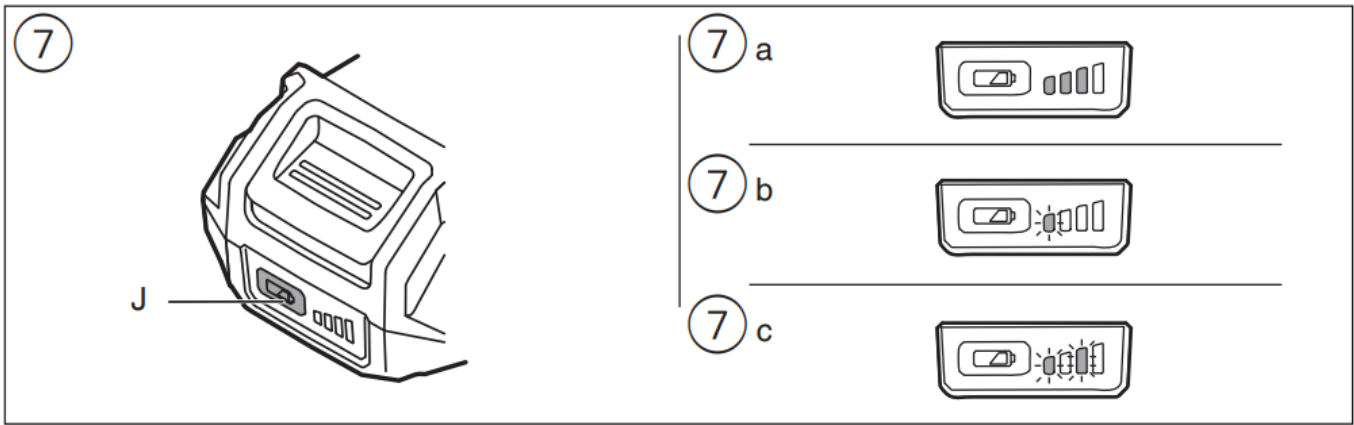


## Contents

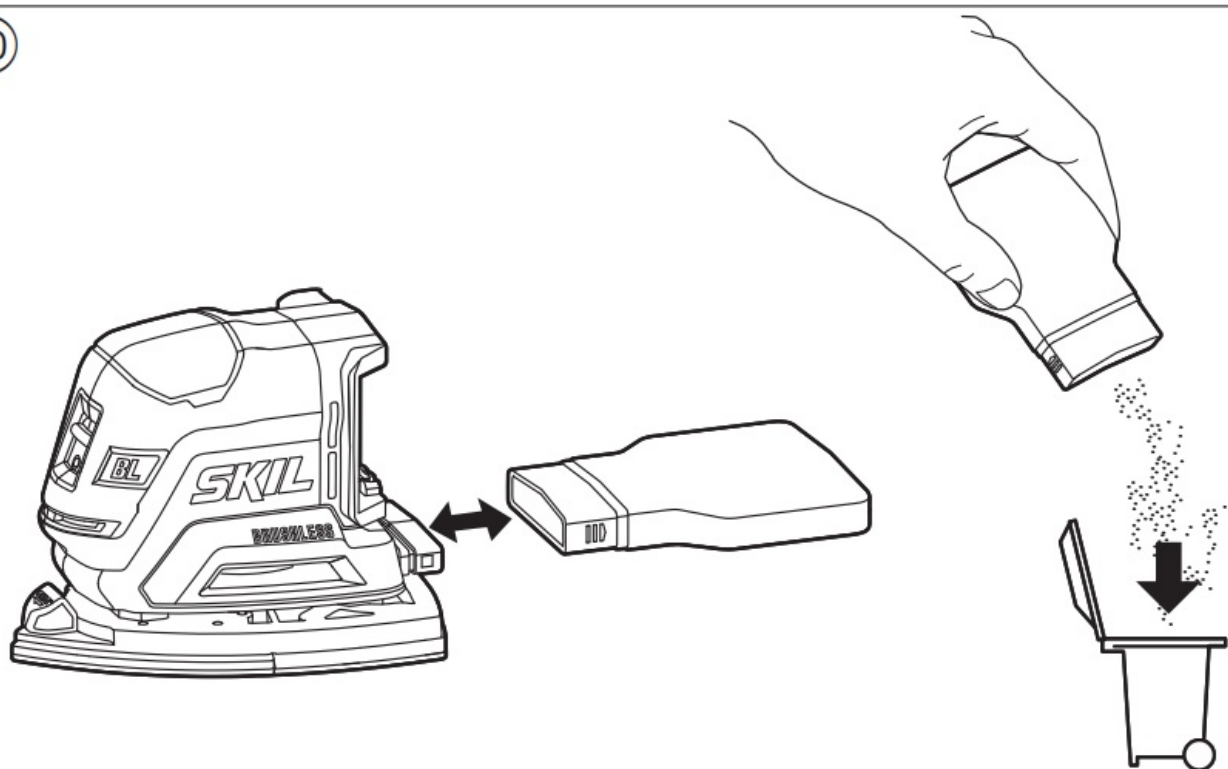
- 1 FIGURES
- 2 INTRODUCTION
- 3 TECHNICAL DATA ①
  - 3.1 TOOL ELEMENTS ②
- 4 SAFETY
  - 4.1 GENERAL POWER TOOL SAFETY WARNINGS
  - 4.2 SAFETY INSTRUCTIONS FOR SANDERS
- 5 USE
- 6 APPLICATION ADVICE
- 7 MAINTENANCE / SERVICE
- 8 ENVIRONMENT
- 9 NOISE / VIBRATION
- 10 Documents / Resources
  - 10.1 References
- 11 Related Posts

## FIGURES

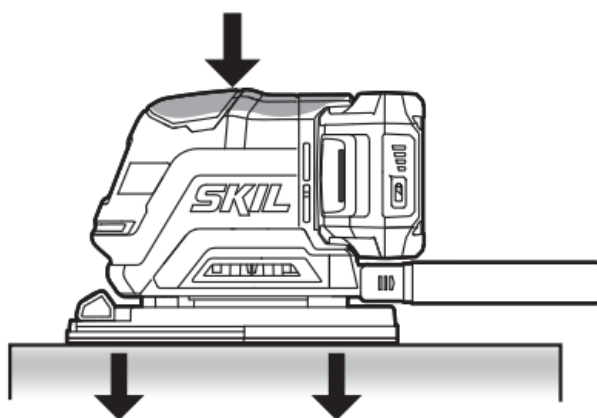




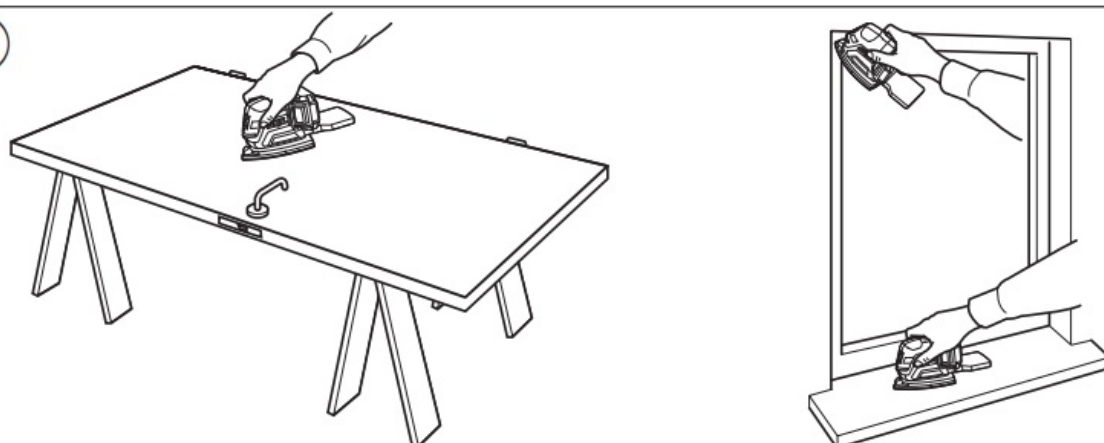
10



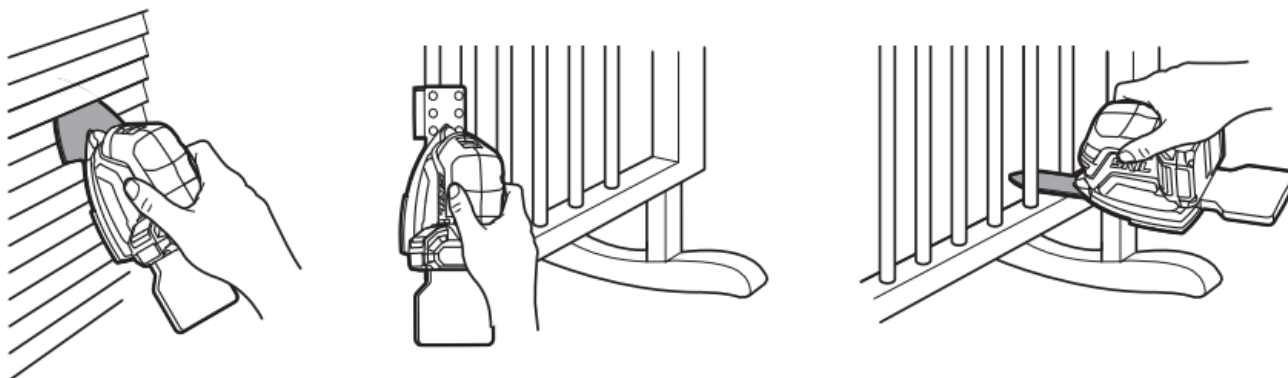
11



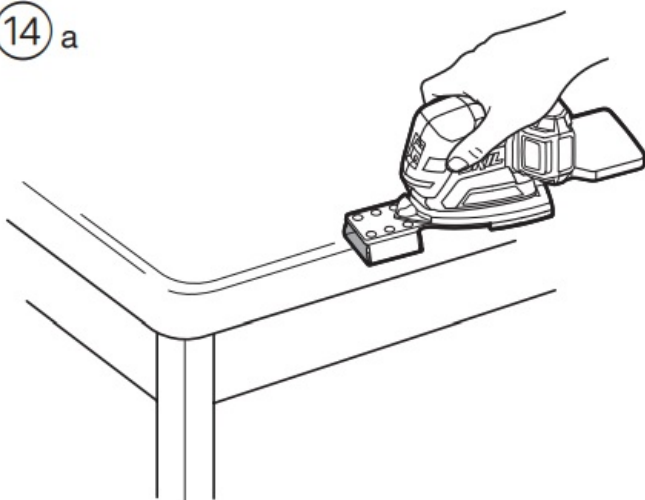
12



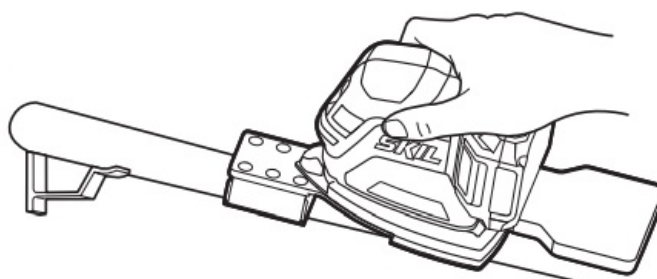
13



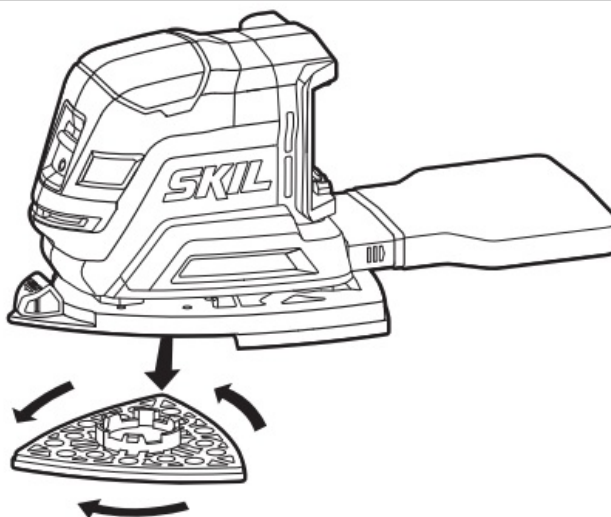
14 a



14 b



15



## INTRODUCTION

1. This tool is intended for dry sanding of wood, plastic, metal, filler and painted surfaces
2. This tool is not intended for sanding gypsum
3. This tool is not intended for professional use
4. Read and save this instruction manual ③

## TECHNICAL DATA ①

## TOOL ELEMENTS ②

- A** Delta tip
- B** Button for changing foot plates
- C** Louvre attachment\*
- D** Finger attachment\*
- E** Flexible sanding attachment\*
- F** Dust bag
- G** On/off switch
- H** Ventilation slots
- J** Battery level indicator

\* NOT STANDARD INCLUDED

## SAFETY

### GENERAL POWER TOOL SAFETY WARNINGS



**WARNING** Read all safety warnings, instructions, illustrations and specifications provided with this power tool. Failure to follow all instructions listed below may result in electric shock, fire and/or serious injury.

Save all warnings and instructions for future reference.

The term “power tool” in the warnings refers to your mainsoperated (corded) power tool or battery-operated (cordless) power tool.

#### 1. WORK AREA SAFETY

- a)** Keep work area clean and well lit. Cluttered or dark areas invite accidents
- b)** Do not operate power tools in explosive atmospheres, such as in the presence of flammable liquids, gases or dust. Power tools create sparks which may ignite the dust or fumes.
- c)** Keep children and bystanders away while operating a power tool. Distractions can cause you to lose control.

#### 2. ELECTRICAL SAFETY

- a)** Power tool plugs must match the outlet. Never modify the plug in any way. Do not use any adapter plugs with earthed (grounded) power tools. Unmodified plugs and matching outlets will reduce risk of electric shock.
- b)** Avoid body contact with earthed or grounded surfaces such as pipes, radiators, ranges and refrigerators. There is an increased risk of electric shock if your body is earthed or grounded.
- c)** Do not expose power tools to rain or wet conditions. Water entering a power tool will increase the risk of electric shock
- d)** Do not abuse the cord. Never use the cord for carrying, pulling or unplugging the power tool. Keep cord away from heat, oil, sharp edges or moving parts. Damaged or entangled cords increase the risk of electric shock.
- e)** When operating a power tool outdoors, use an extension cord suitable for outdoor use. Use of a cord suitable for outdoor use reduces the risk of electric shock.
- f)** If operating a power tool in a damp location is unavoidable, use a residual current device (RCD) protected supply. Use of an RCD reduces the risk of electric shock.

#### 3. PERSONAL SAFETY

- a)** Stay alert, watch what you are doing and use common sense when operating a power tool. Do not use a

power tool while you are tired or under the influence of drugs, alcohol or medication. A moment of inattention while operating power tools may result in serious personal injury.

**b)** Use personal protective equipment. Always wear eye protection. Protective equipment such as a dust mask, non-skid safety shoes, hard hat, or hearing protection used for appropriate conditions will reduce personal injuries.

**c)** Prevent unintentional starting. Ensure the switch is in the off-position before connecting to power source and/or battery pack, picking up or carrying the tool. Carrying power tools with your finger on the switch or energising power tools that have the switch on invites accidents.

**d)** Remove any adjusting key or wrench before turning the power tool on. A wrench or a key left attached to a rotating part of the power tool may result in personal injury.

**e)** Do not overreach. Keep proper footing and balance at all times. This enables better control of the power tool in unexpected situations.

**f)** Dress properly. Do not wear loose clothing or jewellery. Keep your hair and clothing away from moving parts. Loose clothes, jewellery or long hair can be caught in moving parts.

**g)** If devices are provided for the connection of dust extraction and collection facilities, ensure these are connected and properly used. Use of dust collection can reduce dust-related hazards.

**h)** Do not let familiarity gained from frequent use of tools allow you to become complacent and ignore tool safety principles. A careless action can cause severe injury within a fraction of a second.

#### **4. POWER TOOL USE AND CARE**

**a)** Do not force the power tool. Use the correct power tool for your application. The correct power tool will do the job better and safer at the rate for which it was designed.

**b)** Do not use the power tool if the switch does not turn it on and off. Any power tool that cannot be controlled with the switch is dangerous and must be repaired.

**c)** Disconnect the plug from the power source and/ or remove the battery pack, if detachable, from the power tool before making any adjustments, changing accessories, or storing power tools. Such preventive safety measures reduce the risk of starting the power tool accidentally.

**d)** Store idle power tools out of the reach of children and do not allow persons unfamiliar with the power tool or these instructions to operate the power tool. Power tools are dangerous in the hands of untrained users.

**e)** Maintain power tools and accessories. Check for misalignment or binding of moving parts, breakage of parts and any other condition that may affect the power tool's operation. If damaged, have the power tool repaired before use. Many accidents are caused by poorly maintained power tools.

**f)** Keep cutting tools sharp and clean. Properly maintained cutting tools with sharp cutting edges are less likely to bind and are easier to control.

**g)** Use the power tool, accessories and tool bits etc., in accordance with these instructions, taking into account the working conditions and the work to be performed. Use of the power tool for operations different from those intended could result in a hazardous situation.

**h)** Keep handles and grasping surfaces dry, clean and free from oil and grease. Slippery handles and grasping surfaces do not allow for safe handling and control of the tool in unexpected situations.

#### **5. BATTERY TOOL USE AND CARE**

**a)** Recharge only with the charger specified by the manufacturer. A charger that is suitable for one type of battery pack may create a risk of fire when used with another battery pack.

**b)** Use power tools only with specifically designated battery packs. Use of any other battery packs may create a risk of injury and fire.

**c)** When battery pack is not in use, keep it away from other metal objects like paper clips, coins, keys, nails,

screws, or other small metal objects that can make a connection from one terminal to another. Shorting the battery terminals together may cause burns or a fire.

**d)** Under abusive conditions, liquid may be ejected from the battery; avoid contact. If contact accidentally occurs, flush with water. If liquid contacts eyes, additionally seek medical help. Liquid ejected from the battery may cause irritation or burns.

**e)** Do not use a battery pack or tool that is damaged or modified. Damaged or modified batteries may exhibit unpredictable behaviour resulting in fire, explosion or risk of injury.

**f)** Do not expose a battery pack or tool to fire or excessive temperature. Exposure to fire or temperature above 130°C may cause explosion.

**g)** Follow all charging instructions and do not charge the battery pack or tool outside the temperature range specified in the instructions. Charging improperly or at temperatures outside the specified range may damage the battery and increase the risk of fire.

## **6. SERVICE**

**a)** Have your power tool serviced by a qualified repair person using only identical replacement parts. This will ensure that the safety of the power tool is maintained.

**b)** Never service damaged battery packs. Service of battery packs should only be performed by the manufacturer or authorized service providers.

## **SAFETY INSTRUCTIONS FOR SANDERS**

### **GENERAL**

- This tool should not be used by people under the age of 16 years
- This tool is not suitable for wet sanding
- Do not work materials containing asbestos (asbestos is considered carcinogenic)
- Remove battery from tool before making any adjustments or changing accessories

### **ACCESSORIES**

- SKIL can assure flawless functioning of the tool only when original accessories are used
- Do not continue to use worn, torn or heavily clogged sanding sheets

### **BEFORE USE**

- Avoid damage that can be caused by screws, nails and other elements in your workpiece; remove them before you start working
- The noise level when working can exceed 85 dB(A); wear ear protection
- Dust from material such as paint containing lead, some wood species, minerals and metal may be harmful (contact with or inhalation of the dust may cause allergic reactions and/or respiratory diseases to the operator or bystanders); wear a dust mask and work with a dust extraction device when connectable
- Certain kinds of dust are classified as carcinogenic (such as oak and beech dust) especially in conjunction with additives for wood conditioning; wear a dust mask and work with a dust extraction device when connectable
- Follow the dust-related national requirements for the materials you want to work with
- Wear protective gloves, safety glasses, close-fitting clothes and hair protection (for long hair)



- Secure the workpiece (a workpiece clamped with clamping devices or in a vice is held more securely than by hand)
- When sanding metal, sparks are generated; do not use dust box and keep other persons and combustible material from work area

## DURING USE

- Do not touch the moving sanding sheet
- In case of electrical or mechanical malfunction, immediately switch off the tool and remove battery

## AFTER USE

- When you put away the tool, switch off the motor and ensure that all moving parts have come to a complete standstill

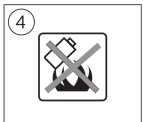
## BATTERIES

- The battery supplied is partially charged (to ensure full capacity of the battery, completely charge the battery in the battery charger before using your power tool for the first time)
- Only use the following batteries and chargers with this tool
  - SKIL battery: BR1\*31\*\*\*\*
  - SKIL charger: CR1\*31\*\*\*\*
- Do not use the battery when damaged; it should be replaced
- Do not disassemble the battery
- Do not expose tool/battery to rain
- Permitted ambient temperature (tool/charger/battery):
  - when charging 4...40°C
  - during operation -20...+50°C
  - during storage -20...+50°C

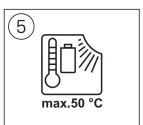
## EXPLANATION OF SYMBOLS ON TOOL/BATTERY



③ Read the instruction manual before use



④ Batteries may explode when disposed of in fire, so do not burn battery for any reason



⑤ Store tool/charger/battery in locations where temperature will not exceed 50°C



⑥ Do not dispose of electric tools and batteries together with household waste material

## USE

- **Charging battery**

! read the safety warnings and instructions provided with the charger

- **Removing/installing the battery 2**

- **Battery level indicator ⑦**

- press the battery level indicator button J to show the current battery level ⑦a

! when the lowest level of the battery indicator starts flashing after pressing button J ⑦b, the battery is empty

! when 2 levels of the battery indicator start flashing after pressing button J ⑦c, the battery is not within the allowable operating temperature range

- **Battery protection**

The tool is suddenly being switched off or prevented from being switched on, when

- the load is too high → remove load and restart
  - the battery temperature is not within the allowable operating temperature range of -20 to +50°C → 2 levels of the battery level indicator start flashing when pressing button J ⑦c; wait until battery has returned within the allowable operating temperature range
  - the battery is nearly empty (to protect against deep discharge) → a low battery level or flashing low battery level ⑦b is shown by the battery level indicator when pressing button J; charge battery
- ! do not continue to press the on/off switch after the tool is switched off automatically; battery may be damaged

- **Mounting of sanding sheet 8**

! remove battery from tool before making any adjustments or changing accessories

! the dust suction requires the use of perforated sanding sheets

! perforation in sanding sheet should correspond with perforation in sanding foot

! replace worn sanding sheets in time

! always use the tool with the total sanding surface covered with sanding paper

- mount VELCRO sanding sheet as illustrated

- **Mounting special sanding attachments (not standard included) 9**

- remove VELCRO sanding sheet
- remove delta tip A while pushing button B
- mount desired sanding attachment as illustrated
- mount corresponding VELCRO sanding sheet to sanding attachment

- **Dust suction**

! do not use dust bag when sanding metal Dust bag q

- mount dust bag D
- empty dust bag regularly for optimal dust pick-up performance

- **On/off switch**

- switch on/off the tool by pushing switch F ② forward/backwards

! before the sanding surface reaches the workpiece, you should switch on the tool

! before switching off the tool, you should lift it from the workpiece

- **Holding and guiding the tool**

! while working, always hold the tool at the greycoloured grip area(s)

- guide the tool parallel to the working surface

- do not apply too much pressure on the tool; let the sanding surface do the work for you
- do not tilt the tool in order to avoid unwanted sanding marks
- keep ventilation slots H ② uncovered

## APPLICATION ADVICE

- Use the tool with its standard foot plate for sanding large surfaces, corners and edges
- Use the tool with the special sanding attachments for hard-to-reach places
- The flexible sanding attachment is intended for
  - rounding edged surfaces ta
  - all rounded surfaces with a maximum diameter of 10 cm b
- When the delta-tip is worn or damaged at the top, you may extend its service life twice by removing it, turning it 120° and putting it back (also applicable to delta sanding sheet)  
Never use the same sanding sheet for wood and metal
- Recommended sanding sheet grits:
  - for removing paint and for sanding of extremely rough wood use coarse grit sizes (40, 60)
  - for sanding of rough or plain wood use medium grit sizes (80, 100, 120)
  - for smoothing of wood and surfaces with old paint as well as for finishing of bare wood use fine grit sizes (180, 240, 320)
- Use different grit sizes when the working surface is rough:
  - start sanding with coarse or medium grit
  - finish with fine grit
- For more information see [www.skil.com](http://www.skil.com)

## MAINTENANCE / SERVICE

- This tool is not intended for professional use
- Always keep tool and cord clean (especially ventilation slots H ②)
  - remove adhering sanding dust with a brush
  - remove battery from tool before cleaning
- If the tool should fail despite the care taken in manufacturing and testing procedures, repair should be carried out by an after-sales service centre for SKIL power tools
  - send the tool undismantled together with proof of purchase to your dealer or the nearest SKIL service station (addresses as well as the service diagram of the tool are listed on [www.skil.com](http://www.skil.com))
- Be aware that damage due to overload or improper handling of the tool will be excluded from the warranty (for the SKIL warranty conditions see [www.skil.com](http://www.skil.com) or ask your dealer)

## ENVIRONMENT

- Do not dispose of electric tools, batteries, accessories and packaging together with household waste material (only for EU countries)
  - in observance of European Directive 2012/19/EC on waste of electric and electronic equipment and its implementation in accordance with national law, electric tools that have reached the end of their life must be collected separately and returned to an environmentally compatible recycling facility

- symbol ⑥ will remind you of this when the need for disposing occurs
- ! prior to disposal protect battery terminals with heavy tape to prevent short-circuit

## **NOISE / VIBRATION**

- Measured in accordance with EN 62841 the sound pressure level of this tool is 76 dB(A) and the sound power level 87 dB(A) (uncertainty K = 3 dB), and the vibration 4.78 m/s<sup>2</sup> (triax vector sum; uncertainty K = 1.5 m/s<sup>2</sup>)
  - The vibration emission level has been measured in accordance with a standardised test given in EN 62841; it may be used to compare one tool with another and as a preliminary assessment of exposure to vibration when using the tool for the applications mentioned
    - using the tool for different applications, or with different or poorly maintained accessories, may significantly increase the exposure level
    - the times when the tool is switched off or when it is running but not actually doing the job, may significantly reduce the exposure level
- ! protect yourself against the effects of vibration by maintaining the tool and its accessories, keeping your hands warm, and organizing your work patterns.

## **EU Declaration of conformity**

### **Cordless multi sander** Article number

We declare under our sole responsibility that the stated products comply with all applicable provisions of the directives and regulations listed below and are in conformity with the following standards.

Technical file at:\*

**3720 SR1\*3720\*\***

2006/42/EC

2014/30/EU

2011/65/EU

EN 62841-1:2015

EN 62841-2-4:2014

EN 55014-1: 2021

EN 55014-2:2021

EN 63000:2018

Skil BV

Rithmeesterpark 22 A1

4838 GZ Breda

The Netherlands

Olaf Dijkgraaf Approval Manager



Skil BV, Rithmeesterpark 22 A1 GZ Breda, NL  
06.05.2022



EAC



**SKIL®**

## Documents / Resources

	<p><a href="#">SKIL SR1E3720FB Brushless Cordless Multi Sander</a> [pdf] Instruction Manual SR1E3720FB Brushless Cordless Multi Sander, SR1E3720FB, Brushless Cordless Multi Sander, Cordless Multi Sander, Multi Sander, Sander</p>
---	--

## References

-  [Innovative Tools with Tech You Can Use | SKIL](#)