



SKIL 1470 Multi-Function Tool Instruction Manual

[Home](#) » [Skil](#) » SKIL 1470 Multi-Function Tool Instruction Manual 

SKIL®

1470 Multi-Function Tool
Instruction Manual



1 1470

200
Watt

1,1 kg
EPTA 01/2003

η_0
15000-22000
/min

1,5° - 1,5°

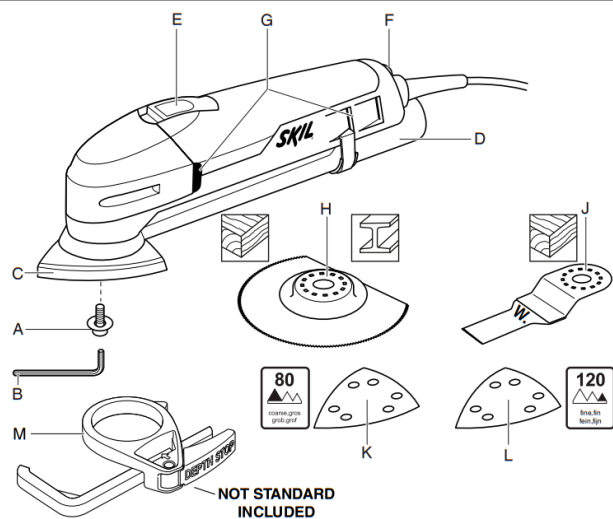
1,5°

OIS

93 mm

230
-
240
V~
50-60 Hz

2



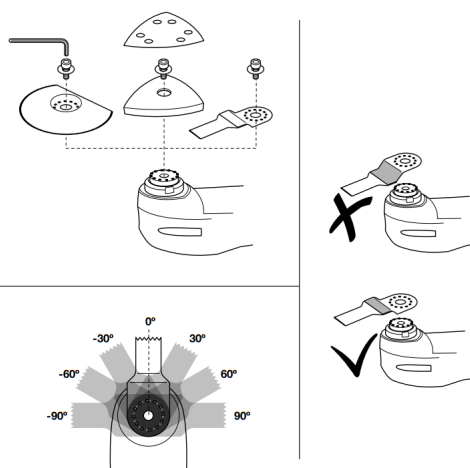
3



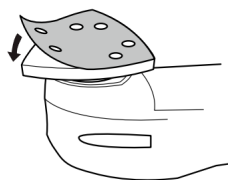
4



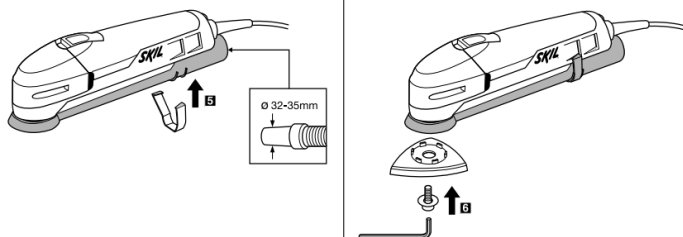
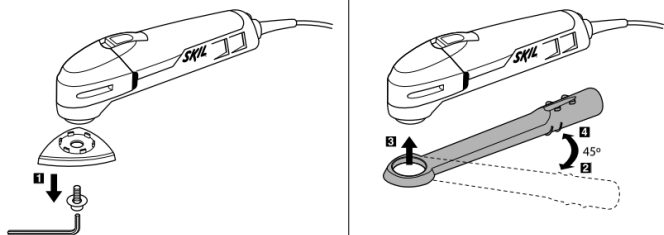
5



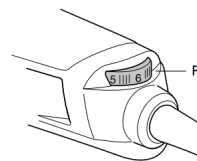
6



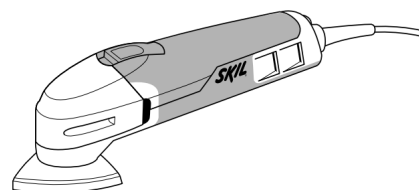
7



8



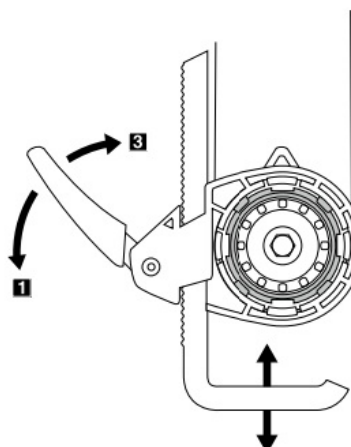
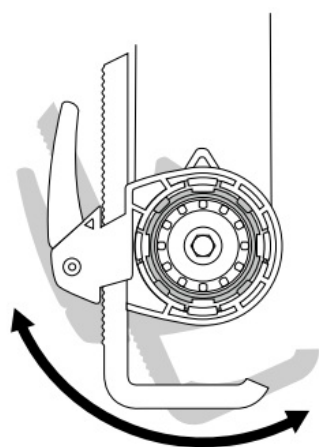
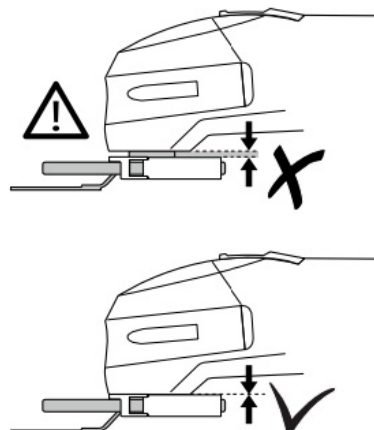
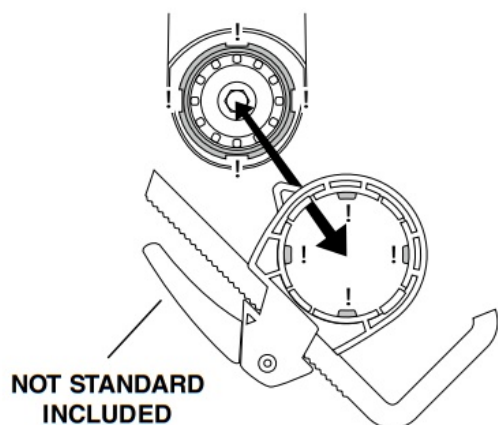
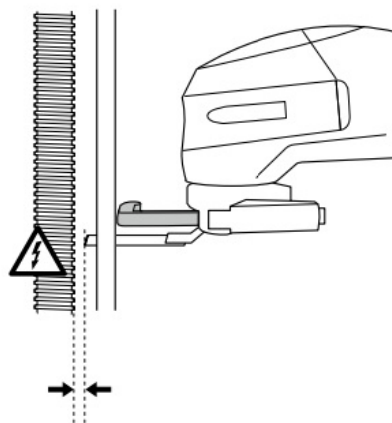
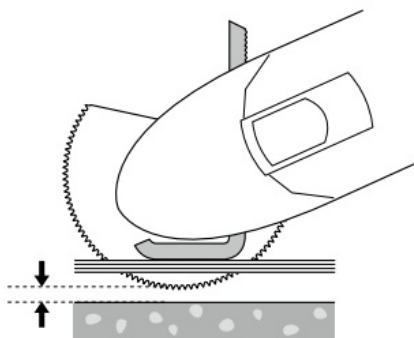
9



11



10



Contents

1 INTRODUCTION

2 SAFETY

3 USE

4 MAINTENANCE / SERVICE

5 Documents / Resources

6 Related Posts

INTRODUCTION

- This tool is intended for sawing and cutting in wood, plastic, plaster, metals, and soft wall tiles as well as for dry sanding of small surfaces
- Due to the oscillating drive the accessory swings up to 22000 times per minute for 3°, which makes the tool particularly suitable for precise work on edged, narrow and other hard-to-reach places
- This tool is not intended for professional use
- This tool accepts the most commonly available multi-tool accessories, including existing BOSCH OIS accessories (3)
- Read and save this instruction manual (4)


TECHNICAL DATA (1)

TOOL ELEMENTS (2)

- A. Clamping screw with a washer
 - B. Hex key
 - C. Sanding pad
 - D. Dust extraction device
 - E. On/off switch
 - F. Speed selection wheel
 - G. Ventilation slots
 - H. Segment saw blade
 - J. Plunge-cut saw blade (wood, 20 mm)
 - K. Sanding sheet (coarse)
 - L. Sanding sheet (fine)
 - M. Depth adjustment accessory *
- * NOT STANDARD INCLUDED

SAFETY

GENERAL SAFETY INSTRUCTIONS

 **WARNING!** Read all safety warnings and all instructions. Failure to follow the warnings and instructions may result in electric shock, fire, and/or serious injury. Save all warnings and instructions for future reference. The term “power tool” in the warnings refers to your mains-operated (corded) power tool or battery-operated (cordless) power tool.

1. WORK AREA SAFETY

- a) Keep the work area clean and well-lit. Cluttered or dark areas invite accidents.

- b) Do not operate power tools in explosive atmospheres, such as in the presence of flammable liquids, gases, or dust. Power tools create sparks that may ignite dust or fumes.
- c) Keep children and bystanders away while operating a power tool. Distractions can cause you to lose control.

2. ELECTRICAL SAFETY

- a) Power tool plugs must match the outlet. Never modify the plug in any way. Do not use any adapter plugs with earthed (grounded) power tools. Unmodified plugs and matching outlets will reduce the risk of electric shock.
- b) Avoid body contact with earthed or grounded surfaces such as pipes, radiators, ranges, and refrigerators. There is an increased risk of electric shock if your body is earthed or grounded.
- c) Do not expose power tools to rain or wet conditions. Water entering a power tool will increase the risk of electric shock.
- d) Do not abuse the cord. Never use the cord for carrying, pulling, or unplugging the power tool. Keep cord away from heat, oil, sharp edges, or moving parts. Damaged or entangled cords increase the risk of electric shock.
- e) When operating a power tool outdoors, use an extension cord suitable for outdoor use. The use of a cord suitable for outdoor use reduces the risk of electric shock.
- f) If operating a power tool in a damp location is unavoidable, use an earth leakage circuit breaker. The use of an earth leakage circuit breaker reduces the risk of electric shock.

3. PERSONAL SAFETY

- a) Stay alert, watch what you are doing, and use common sense when operating a power tool. Do not use a power tool while you are tired or under the influence of drugs, alcohol, or medication. A moment of inattention while operating power tools may result in serious personal injury.
- b) Use personal protective equipment. Always wear eye protection. Protective equipment such as dust masks, non-skid safety shoes, hard hats, or hearing protection used for appropriate conditions will reduce personal injuries.
- c) Prevent unintentional starting. Ensure the switch is in the off-position before connecting to a power source and/or battery pack, picking up or carrying the tool. Carrying power tools with your finger on the switch or energizing power tools that have the switch on invites accidents.
- d) Remove any adjusting key or wrench before turning the power tool on. A wrench or a key left attached to a rotating part of the power tool may result in personal injury.
- e) Do not overreach. Keep proper footing and balance at all times. This enables better control of the power tool in unexpected situations.
- f) Dress properly. Do not wear loose clothing or jewelry. Keep your hair, clothing and gloves away from moving parts. Loose clothes, jewelry, or long hair can be caught in moving parts.
- g) If devices are provided for the connection of dust extraction and collection facilities, ensure these are connected and properly used. The use of dust collection can reduce dust-related hazards.

4. POWER TOOL USE AND CARE

- a) Do not force the power tool. Use the correct power tool for your application. The correct power tool will do the job better and safer at the rate at which it was designed.
- b) Do not use the power tool if the switch does not turn on and off. Any power tool that cannot be controlled with the switch is dangerous and must be repaired.
- c) Disconnect the plug from the power source and/or the battery pack from the power tool before making any adjustments, changing accessories, or storing power tools. Such preventive safety measures reduce the risk of

starting the power tool accidentally.

d) Store idle power tools out of the reach of children and do not allow persons unfamiliar with the power tool or these instructions to operate the power tool. Power tools are dangerous in the hands of untrained users.

e) Maintain power tools. Check for misalignment or binding of moving parts, breakage of parts, and any other condition that may affect the power tool's operation. If damaged, have the power tool repaired before use. Many accidents are caused by poorly maintained power tools.

f) Keep cutting tools sharp and clean. Properly maintained cutting tools with sharp cutting edges are less likely to bind and are easier to control.

g) Use the power tool, accessories and tool bits, etc., in accordance with these instructions, taking into account the working conditions and the work to be performed. Use of the power tool for operations different from those intended could result in a hazardous situation.

5. SERVICE

a) Have your power tool serviced by a qualified repair person using only identical replacement parts. This will ensure that the safety of the power tool is maintained.

SAFETY INSTRUCTIONS FOR MULTI-FUNCTION TOOLS GENERAL

- This tool should not be used by people under the age of 16 years
- Use completely unrolled and safe extension cords with a capacity of 16 Amps (U.K. 13 Amps)
- Always check that the supply voltage is the same as the voltage indicated on the nameplate of the tool (tools with a rating of 230V or 240V can also be connected to a 220V supply)
- Avoid damage that can be caused by screws, nails, and other elements in your workpiece; remove them before you start working
- Secure the workpiece (a workpiece clamped with clamping devices or in a vice is held more securely than by hand)
- Do not work materials containing asbestos (asbestos is considered carcinogenic)
- Always disconnect the plug from the power source before making any adjustment or changing any accessory
- When working, always hold the tool firmly with both hands and take a secure stance
- Always keep the cord away from moving parts of the tool; direct the cord to the rear, away from the tool
- Use protective gloves when changing accessories (contact with the accessory can lead to injuries)
- In case of electrical or mechanical malfunction, immediately switch off the tool and disconnect the plug
- If the cord is damaged or cut through while working, do not touch the cord, but immediately disconnect the plug
- Never use the tool when the cord is damaged; have it replaced by a qualified person
- When you put away the tool, switch off the motor and ensure that all moving parts have come to a complete standstill

WHEN SAWING/CUTTING

- Hold power tool by insulated gripping surfaces, when performing an operation where the cutting accessory may contact hidden wiring or its own cord (a cutting accessory contacting a "live" wire may make exposed metal parts of the power tool "live" and could give the operator an electric shock)
- Keep hands away from the cutting area; never reach underneath the material for any reason while cutting
- Use suitable detectors to find hidden utility lines or call the local utility company for assistance (contact with

electric lines can lead to fire or electrical shock; damaging a gas line can result in an explosion; penetrating a water pipe will cause property damage or an electrical shock)

- Do not use a saw blade that is cracked, deformed, or dull

WHEN SANDING

- Dust from materials such as paint containing lead, some wood species, minerals, and metal may be harmful (contact with or inhalation of the dust may cause allergic reactions and/or respiratory diseases to the operator or bystanders); wear a dust mask and work with a dust extraction device when connectable
- Certain kinds of dust are classified as carcinogenic (such as oak and beech dust), especially in conjunction with additives for wood conditioning; wear a dust mask and work with a dust extraction device when connectable
- Follow the dust-related national requirements for the materials you want to work with
- Use the tool only for dry sanding (penetration of water into the tool increases the risk of an electric shock)
- Do not touch the moving sanding sheet
- Do not continue to use worn, torn, or heavily clogged sanding sheets
- When sanding metal, sparks are generated; do not use a vacuum cleaner and keep other persons and combustible material from the work area

WHEN CONNECTING A NEW 3-PIN PLUG (U.K. ONLY):

- Do not connect the blue (= neutral) or brown (= life) wire in the cord of this tool to the earth terminal of the plug
- If for any reason the old plug is cut off the cord of this tool, it must be disposed of safely and not left unattended

USE

- Changing accessories (5)

! disconnect the plug

- remove/mount the required accessory as illustrated
- ensure that the openings of the accessory engage into the tabs of the tool head (any snap-in position possible)
- mount the accessory with the depressed center pointing downwards
- loosen/fasten screw A with hex key B
- check the tight seating of the accessory (incorrect or not securely fastened accessories can come loose during operation and create a hazard)

- Mounting of sanding sheet (6)

- knock the dust out of the VELCRO material on sanding pad C (2) before mounting the sanding sheet
- mount the VELCRO sanding sheet as illustrated

! the dust suction requires the use of perforated sanding sheets

! perforation in the sanding sheet should correspond with perforation in the sanding foot

! replace worn sanding sheets in time

! always use the tool with the total VELCRO surface covered with sanding paper

- Dust/chip extraction (7)

- mount dust extraction device D as illustrated

- connect the vacuum cleaner
- ! do not use a dust extraction device/vacuum cleaner when sanding metal**
- clean dust extraction device D regularly for optimal dust pick-up performance
- On/off
 - switch on/off the tool by pushing switch E (2) in the "To" position
 - ! before the accessory reaches the workpiece, the tool should run at full speed**
 - ! before switching off the tool, you should lift it from the workpiece**
- Adjusting working speed (8)
 - with wheel F the required oscillating frequency can be adjusted from low (1) to high (6) (also while the tool is running)
 - the optimal working speed depends on the material and can be determined with practical trials
- Holding and guiding the tool
 - ! while working, always hold the tool at the grey-colored grip area(s) (9)
 - keep ventilation slots G (2) uncovered
 - do not apply too much pressure on the tool (excessive pressure will cause excessive heat and may shorten the service life of the accessory)
- Depth adjustment accessory (DEPTH STOP) (not standard included) (10)

APPLICATION ADVICE

- Use segment saw blade H (2) for separating and plunge cuts in wood, plaster, gypsum, and plastics (also for sawing close to edges, in corners, and other hard-to-reach areas)
- Use plunge-cut saw blade J (2) for separating and deep plunge-cuts in wood, plaster, gypsum, and soft plastics (also for sawing close to edges, in corners, and other hard-to-reach areas)
- For more tips see www.skil.com

MAINTENANCE / SERVICE

- This tool is not intended for professional use
- Always keep the tool and cord clean (especially ventilation slots G (2))
 - ! disconnect the plug before cleaning**
- If the tool should fail despite the care taken in manufacturing and testing procedures, repair should be carried out by an after-sales service center for SKIL power tools
 - send the tool undismantled together with proof of purchase to your dealer or the nearest SKIL service station (addresses, as well as the service diagram of the tool, are listed on www.skil.com)




ENVIRONMENT

- Do not dispose of electric tools, accessories, and packaging together with household waste material (only for EU countries)
 - in observance of European Directive 2012/19/EC on the waste of electric and electronic equipment and its implementation in accordance with national law, electric tools that have reached the end of their life must be collected separately and returned to an environmentally compatible recycling facility symbol (ii) will remind you of this when the need for disposing occurs

DECLARATION OF CONFORMITY

Multifunction tool 1470 Technical data (1)

- We declare under our sole responsibility that the product described under “Technical data” is in conformity with the following standards or standardization documents: EN 60745, EN 61000, EN 55014, in accordance with the provisions of the directives 2014/30/EU, 2006/42/EC, 2011/65/EU
- **Technical file at** SKIL Europe BV (PT-SEU/ENG1), 4825 BD Breda, NL

Marijn van der Hoofden Operations & Engineering 	Olaf Dijkgraaf Approval Manager 
SKIL Europe BV, 4825 BD Breda, NL 20.02.2014	

NOISE/VIBRATION

- Measured in accordance with EN 60745 the sound pressure level of this tool is 92 dB(A) and the sound power level 103 dB(A) (standard deviation: 3 dB), and the vibration * (triax vector sum; uncertainty K = 1.5 m/s²) * when sanding 8.8 m/s² * when cutting with plunge-cut saw blade 13.9 m/s² * when cutting with segment saw blade 7.2 m/s²
- The vibration emission level has been measured in accordance with a standardized test given in EN 60745; it may be used to compare one tool with another and as a preliminary assessment of exposure to vibration when using the tool for the applications mentioned
 - using the tool for different applications, or with different or poorly maintained accessories, may significantly increase the exposure level
 - the times when the tool is switched off or when it is running but not actually doing the job, may significantly reduce the exposure level! protect yourself against the effects of vibration by maintaining the tool and its accessories, keeping your hands warm, and organizing your work patterns


SKIL[®]

SKIL Europe BV – Konijnenberg 60
4825 BD Breda – The Netherlands

www.skil.com



2610Z05076



SKIL **MULTI-FUNCTION TOOL**
1470 FIVE-IN-ONE

1 **2** **3** **4** **5** **6** **7** **8** **9** **10** **11** **12** **13** **14** **15** **16** **17** **18** **19** **20** **21** **22** **23** **24** **25** **26** **27** **28** **29** **30** **31** **32** **33** **34** **35** **36** **37** **38** **39** **40** **41** **42** **43** **44** **45** **46** **47** **48** **49** **50** **51** **52** **53** **54** **55** **56** **57** **58** **59** **60** **61** **62** **63** **64** **65** **66** **67** **68** **69** **70** **71** **72** **73** **74** **75** **76** **77** **78** **79** **80** **81** **82** **83** **84** **85** **86** **87** **88** **89** **90** **91** **92** **93** **94** **95** **96** **97** **98** **99** **100**

[SKIL 1470 Multi-Function Tool](#) [pdf] Instruction Manual

1470, Multi-Function Tool, 1470 Multi-Function Tool