



Contents [[hide](#)]

- 1 Introduction
- 2 Hardware Architecture:
- 3 Operational Description
- 4 Antenna Trace Design for Host devices
- 5 Installation Guide
- 6 Contact Address
- 7 Manufacturer
- 8 FCC Statement
- 9 Documents / Resources
 - 9.1 References

Introduction

The WHM200A uses the new Wi-Fi standard IEEE 802.11ah, which uses the Sub 1 GHz licenseexempt band. It has long range, low power and high permeability and is optimized for IoT modules. The WHM200A includes a RF switch and an internal PA in the SoC to

increase transmit power up to 28dBm.

Hardware Architecture:

2.1 Main Chipset Information

Item	Vendor	Part Number
IEEE802.11ah WLAN	NEWRACOM	NRC7394

2.2 Absolute Maximum Ratings

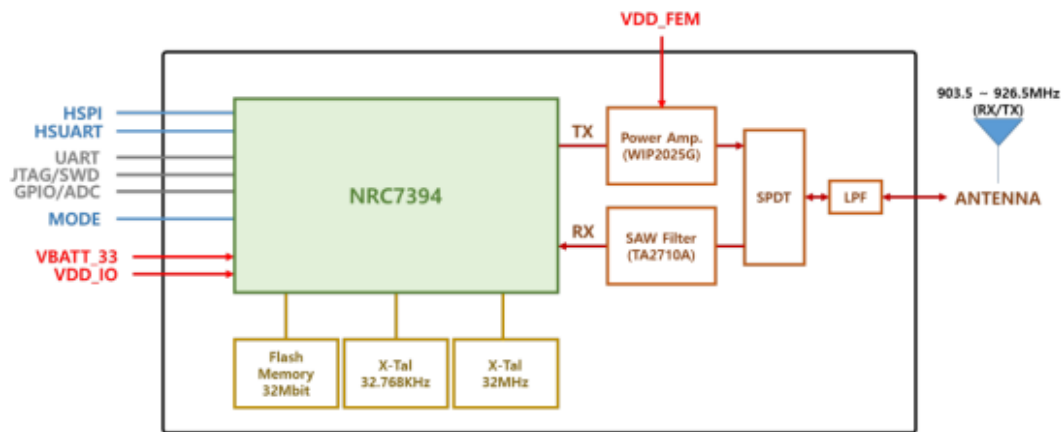
Symbol	Parameter	Rating	Unit
Temp	Operating	-40 to 85	°C
TSTG	Storage Temperature	-40 to 125	°C

Operational Description

The WHM200A is a long range, high-performance module for wireless communication. The module is solder-able like a SMD component and can easily be mounted on a simple carrier board with a minimum of required external connections.

– Features

- ▲ Compact module 14 x 17.5 x 2.8mm. (Typ.)
- ▲ Full IEEE 802.11ah compatibility with enhanced performance
- ▲ AP and STA, mesh network support
- ▲ UART and SPI support for host interface
- ▲ Low-Power Long Range Transceiver operating in the sub-1GHz ISM band
- ▲ RF interface optimized to 50 Ω
- ▲ -107 dBm minimum receive sensitivity (MCS10)



– CPU

- ▲ ARM® Cortex-M3 for IEEE 802.11ah WLAN and application
- ▲ Clock frequencies for processor(Max 32MHz)
- ▲ For IF and RF frequency, a crystal(32MHz) is a clock reference.

– Memory

Internal Memory	External Memory
<ul style="list-style-type: none"> ▷ 32KB Boot ROM ▷ 1,088KB system SRAM ▷ 192KB Key Memory for security ▷ 16KB cache for XIP 	<ul style="list-style-type: none"> ▷ 32Mbit External Flash Memory

– WIFI Transmission

- ▲ Based on the industry proven direct conversion transceiver architecture
- ▲ Includes a complete radio front-end part, which consists of a Tx power amplifier and an LNA
- ▲ Integrated LDOs
- ▲ Radio calibration interfaces for digital baseband
- ▲ Internal temperature sensing and battery voltage monitoring
- ▲ Low supply current: RX 15mA @ 3.3V, TX 500mA @ 3.3V (+21 dBm Pout)
- ▲ Modulation bandwidth: 1/2/4 MHz
- ▲ RX noise figure < 6dB
- ▲ RX gain range: > 100dB
- ▲ RX IIP3: -17dBm (@ LNA max. gain)
- ▲ TX gain range: > 30 dB

▲ EVM < -30 dB @ +21 dBm (w/ 64 QAM, DPD)

▲ Integrated RF PLL phase error < 0.7 degree.

– Product Details

▲ Data Modulation

OFDM with BPSK, QPSK, 16QAM, 64QAM

▲ Frequency : 902 ~ 928 MHz

Coun try Co de	BandWidth	CF	Remark
	1 MHz	903.5 MHz	
	1 MHz	904.5 MHz	
	1 MHz	905.5 MHz	
	1 MHz	906.5 MHz	
	1 MHz	907.5 MHz	
	1 MHz	908.5 MHz	
	1 MHz	909.5 MHz	
	1 MHz	910.5 MHz	
	1 MHz	911.5 MHz	
	1 MHz	912.5 MHz	
	1 MHz	913.5 MHz	
	1 MHz	914.5 MHz	
	1 MHz	915.5 MHz	
	1 MHz	916.5 MHz	

US

1 MHz	917.5 MHz	
1 MHz	918.5 MHz	
1 MHz	919.5 MHz	
1 MHz	920.5 MHz	
1 MHz	921.5 MHz	
1 MHz	922.5 MHz	
1 MHz	923.5 MHz	
1 MHz	924.5 MHz	
1 MHz	925.5 MHz	
1 MHz	926.5 MHz	
2 MHz	905.0 MHz	
2 MHz	907.0 MHz	
2 MHz	909.0 MHz	
2 MHz	911.0 MHz	
2 MHz	913.0 MHz	
2 MHz	915.0 MHz	
2 MHz	917.0 MHz	
2 MHz	919.0 MHz	
2 MHz	921.0 MHz	
2 MHz	923.0 MHz	
2 MHz	925.0 MHz	

	4 MHz	906.0 MHz	
	4 MHz	910.0 MHz	
	4 MHz	914.0 MHz	
	4 MHz	918.0 MHz	
	4 MHz	922.0 MHz	

This module ensures frequency stability such that an emission is maintained within the band of operation under all conditions of normal operation

Antenna Trace Design for Host devices

4-1 Trace layout and dimensions including specific designs for each type:

- Layout of trace design, parts, antenna, connectors, and isolation requirements;
All RF traces must be designed with a characteristic impedance of 50 ohms to ensure signal integrity.
SMA-type connectors must be used for all RF ports.
Approved antennas are as follows:
 - SJANT-PCB-900-01 manufactured by SJIT CO., LTD.
 - STDPA201354SMB900, STDPA131909IBS900 manufactured by SOANT Communication Equipment Co., Ltd.
 But, you must not give to access to antenna connector to user when you install this module into devices to be compliance with FCC section 15.203.
- Boundary limits of size, thickness, length, width, shape(s), dielectric constant, and impedance must be clearly described for each type of antenna;
Antenna should be used only PCB pattern type antenna manufactured by SJIT CO.,LTD and STDPA201354SMB900, STDPA131909IBS900 manufactured by SOANT Communication Equipment Co., Ltd.
- Different antenna length and shapes affect radiated emissions, and each design shall be considered a different type; e.g., antenna length in multiple(s) of frequency wavelength and antenna shape (traces in phase) can affect antenna gain and must be considered;

4-2 Appropriate parts by manufacturer and specifications.

1. For the antenna, either the SJANT-PCB-900-01 or a similar part manufactured, or the STDPA201354SMB900, STDPA131909IBS900

4-3 Test procedures for design verification.

The manufacturer should verify that the antenna trace design on the PCB board is compliance with this Antenna Trace Design documents.

You connect the antenna connector of the device to the input of a measurement instrument. And you set the measurement instrument to the proper options for each frequency bands and conduct the test to get the output power from the antenna connector. The permissible output power range is in below table to verify the antenna trace design is appropriate for this documents.

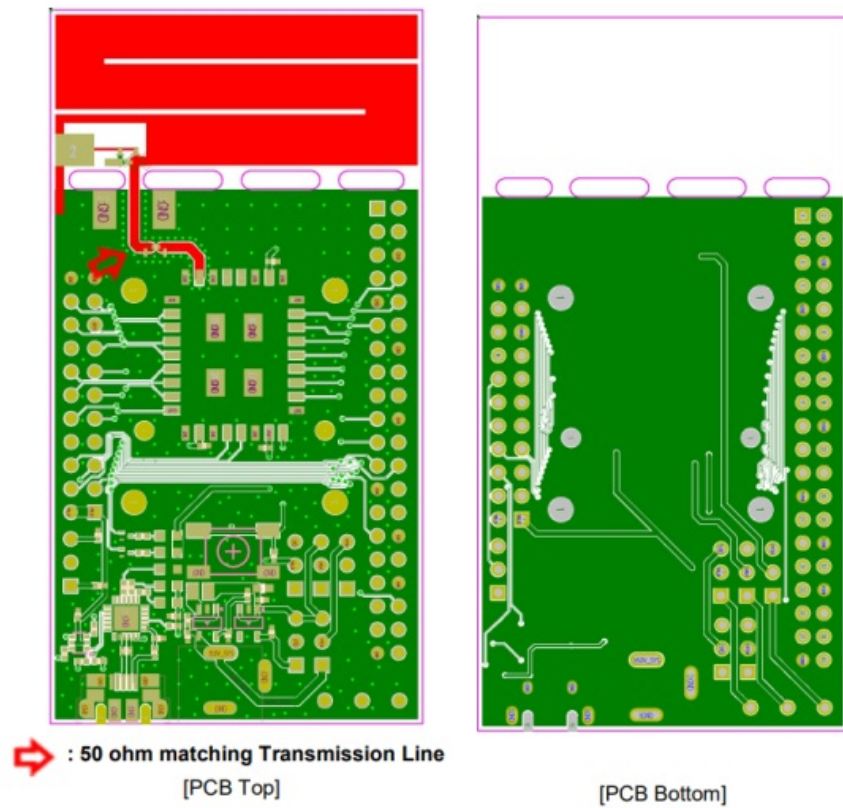
BAND	Output power	Tolerance
WIFI-HaLow US	+23dBm	+2/-2dB

4-4 Production test procedures for ensuring compliance.

The host product itself is required to comply with all other applicable FCC equipment authorization regulations, requirements.

So, the host device should be tested for unintentional radiators under Part 15 subpart B for non-transmitter functions on the transmitter module as appropriate.

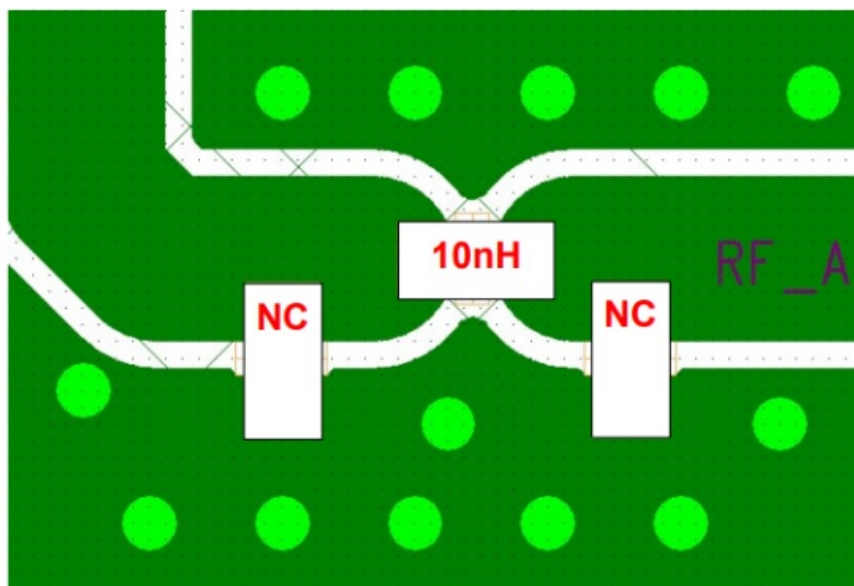
4-5 The above data is to be provided by a Gerber file (or equivalent) for PCB layout.



1) Application PCB information

- PCB : 2-layer 1.6T
- Size : 77.5 X 40
- RF Transmission line width : 1.0mm
- Clearance : 0.15mm
- FR4 PCB $\epsilon_r = 4.3$

2) Antenna Matching value]

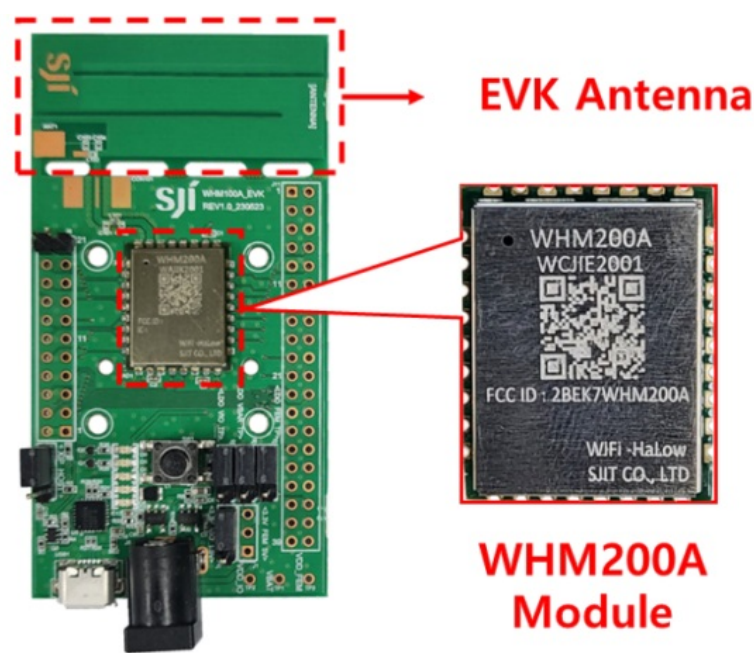


Installation Guide

- Contents

This module is used by mounting on the main board that included antenna.

– InstallationFigure



Contact Address

54-11, Dongtanhana 1-gil, Hwaseong-si, Gyeonggi-do, 18423, Republic of Korea.

Manufacturer

SJIT CO.,LTD

FCC Statement

1. FCC Part 15.19 Statements:	This device complies with Part 15 of the FCC Rules. Operation is subject to the following two conditions: (1) this device may not cause harmful interference, and (2) this d evice must accept any interference received, including interference that may cause undesired operation.
-------------------------------	---

<p>2. FCC Part 15.105 statement(Class B)</p>	<p>This equipment has been tested and found to comply with the limits for a Class B digital device, pursuant to part 15 of the FCC Rules.</p> <p>These limits are designed to provide reasonable protection against harmful interference in a residential installation. This equipment generates, uses and can radiate radio frequency energy and, if not installed and used in accordance with the instructions, may cause harmful interference to radio communications. However, there is no guarantee that interference will not occur in a particular installation. If this equipment does cause harmful interference to radio or television reception, which can be determined by turning the equipment off and on, the user is encouraged to try to correct the interference by one or more of the following measures:</p> <ul style="list-style-type: none"> – Reorient or relocate the receiving antenna. – Increase the separation between the equipment and receiver. – Connect the equipment into an outlet on a circuit different from that to which the receiver is connected. – Consult the dealer or an experienced radio/TV technician for help.
<p>3. FCC Part 15.21 statement</p>	<p>Any changes or modifications not expressly approved by the party responsible for compliance could void the user's authority to operate this equipment. This device must not be co-located or operating in conjunction with any other antenna or transmitter.</p>

4. Responsible Party	<p>Supplier's Declaration of Conformity</p> <p>47 CFR § 2.1077 Compliance Information</p> <p>Unique Identifier: (e.g., Trade Name, Model Number)</p> <p>Responsible Party – U.S. Contact Information</p> <p>1. Company Name: Sea Slug Labs LLC</p> <p>Street Address Sea Slug Labs 19806 Maverick Creek Ln Cypress</p> <p>City, State: Texas</p> <p>Zip Code: 77433</p> <p>Telephone number or internet contact information: +6827778293 / jorge@seasluglabs.io</p> <p>2. Company Name: Treetop Technical Products LLC</p> <p>Street Address 1776 Broadway, Unit 7 Raynham Massachusetts</p> <p>City, State: Massachusetts</p> <p>Zip Code: 02767</p> <p>Telephone number or internet contact information: +1508238313 3/ sales@treetoptech.com</p>
	<p>Regulatory notice to host manufacturer according to KDB 996369 D03 OEM Manual</p> <p>This module has been granted modular approval as below listed FCC rule parts.</p> <p>-FCC Rule parts 15C(15.247)</p> <p>Summarize the specific operational use conditions</p> <p>-The OEM integrator should use equivalent antennas which is the same type and equal or less gain than an antenna listed below this instruction manual.</p> <p>– This module supports up to three antennas: one integrated Trace Antenna and two optional external dipole antennas (STDPA201354SMB900 and STDPA131909IBS900). Module integration guidelines must be closely followed.</p> <p>Compliance of host integrations of the module is limited to hosts adaptation designs which are identical to SJIT's reference design</p>

.
Host integrations with adaption designs deviating from SJIT's reference design require either class 2 permissive change to this modular approval or a separate host approval with different FCC-ID

Limited module procedures

This module does not have its own power supply regulation. Therefore, Host product in which this module is installed must have the capability to provide the rated power supply as described in installation manual. And it should be followed the testing guidelines for this power supply regulation below.

-. Measurements of the variation of the input power or the radiated signal level of the fundamental frequency component of the emission, as appropriate, shall be performed with the supply voltage varied between 85% and 115% of the nominal rated supply voltage. For battery operated equipment, the equipment tests shall be performed using a new battery.

RF exposure considerations

-The module has been certified for integration into products only by OEM integrators under the following condition:

-The antenna(s) must be installed such that a minimum separation distance of at least 20 cm is maintained between the radiator (antenna) and all persons at all times.

-The transmitter module must not be co-located or operating in conjunction with any other antenna or transmitter except in accordance with FCC multi-transmitter product procedures.

-Mobile use

As long as the three conditions above are met, further transmitter testing will not be required.

OEM integrators should provide the minimum separation distance to end users in their end-product manuals.

Antennas list

This module is certified with the following integrated antenna.

-. Max. Antenna gain: 3.0 dBi

5. Modular Approval Statement

- . Ant. Type:

EVK Antenna(P/N SJANT-PCB-900-01)

External dipole antennas (STDPA201354SMB900 and STDPA131909IBS900)

Any new antenna type, higher gain than listed antenna should be met the requirements of FCC rule 15.203 and 2.1043 as permissive change procedure.

End Product Labeling

The module is labeled with its own FCC ID. If the FCC ID are not visible when the module is installed inside another device, then the outside of the device into which the module is installed must also display a label referring to the enclosed module. In that case, the final end product must be labeled in a visible area with the following:

“Contains FCC ID: 2BEK7WHM200A

Information on test modes and additional testing requirements

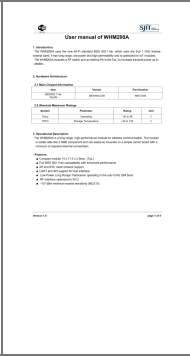
-OEM integrator is still responsible for testing their end-product for any additional compliance requirements required with this module installed (for example, digital device emissions, PC peripheral requirements, additional transmitter in the host, etc.).

Additional testing, Part 15 Subpart B disclaimer

-The final host product also requires Part 15 subpart B compliance testing with the modular transmitter installed to be properly authorized for operation as a Part 15 digital device.




Documents / Resources




[SJIT WHM200A WIFI Halow Module \[pdf\]](#) User Manual
2BEK7WHM200A, WHM200A, WHM200A WIFI Halow Module, WHM200A, WIFI Halow Module, Halow Module, Module

References

- [User Manual](#)

 2BEK7WHM200A, HaLow Module, Module, SJIT, WHM200A, WHM200A WIFI Halow Module, WiFi HaLow

 [SJIT](#) [Module](#)

Leave a comment

Your email address will not be published. Required fields are marked *

Comment *

Name

Email

Website

☐ Save my name, email, and website in this browser for the next time I comment.

[Post Comment](#)

Search:

[Search](#)

[Manuals+](#) | [Upload](#) | [Deep Search](#) | [Privacy Policy](#) | [@manuals.plus](#) | [YouTube](#)

This website is an independent publication and is neither affiliated with nor endorsed by any of the trademark owners. The "Bluetooth®" word mark and logos are registered trademarks owned by Bluetooth SIG, Inc. The "Wi-Fi®" word mark and logos are registered trademarks owned by the Wi-Fi Alliance. Any use of these marks on this website does not imply any affiliation with or endorsement.