

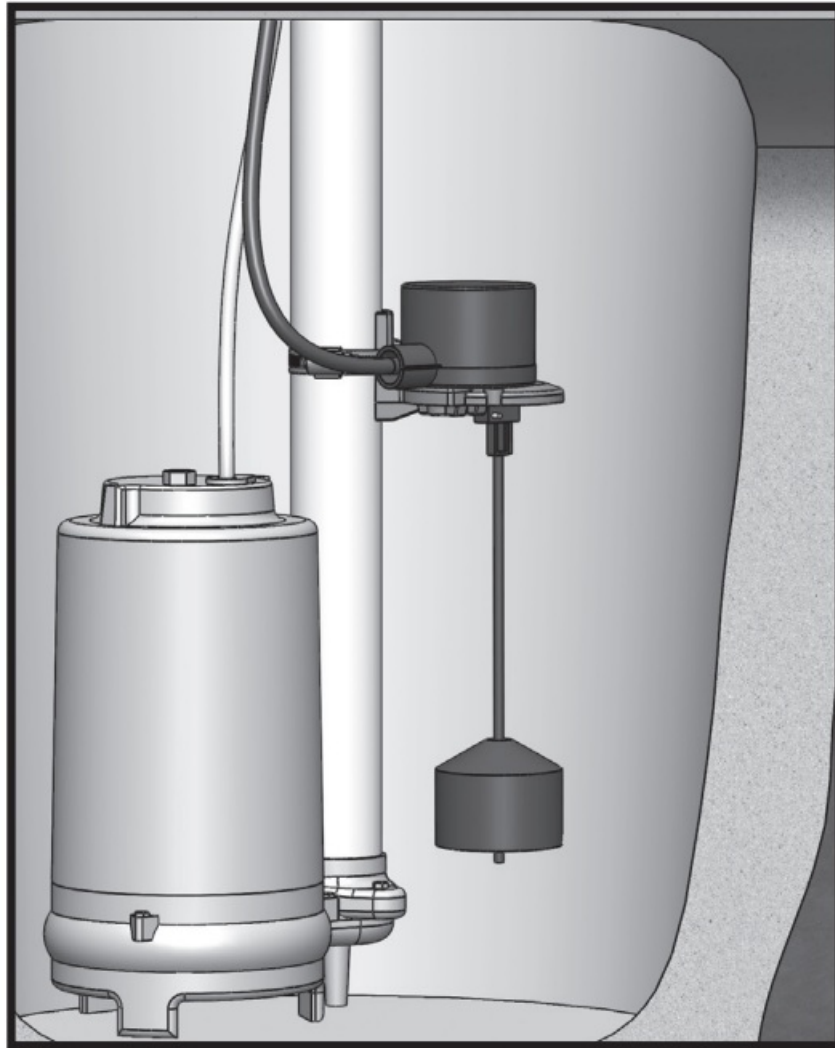


## **SJE VERTICALMASTER II LC Control Switch Instruction Manual**

[Home](#) » [SJE](#) » SJE VERTICALMASTER II LC Control Switch Instruction Manual 



**LC Control Switch  
Instruction Manual**



## Contents

- [1 VERTICALMASTER II LC Control Switch](#)
- [2 Electrical Warnings](#)
- [3 Documents / Resources](#)
  - [3.1 References](#)
- [4 Related Posts](#)

## VERTICALMASTER II LC Control Switch

U.S. Patent No. 6,140,925

CA Pats. 2,367,577 and  
2,694,446

Euro Pat. 1203360

German Pat. DE69931196T2

China Pat. 201110089665.0

Mechanically-activated control switch designed to activate low current control panels and alarms.

This control switch offers reliable control for AC and DC applications in non-potable water and wastewater. The internal switching mechanism has gold cross-point contacts for reliable low current operation. Common applications include PLC (programmable logic controller) panels, IS panels with intrinsically safe barriers, low current solar barriers, low current solar applications, and other low current control panel and alarm applications.

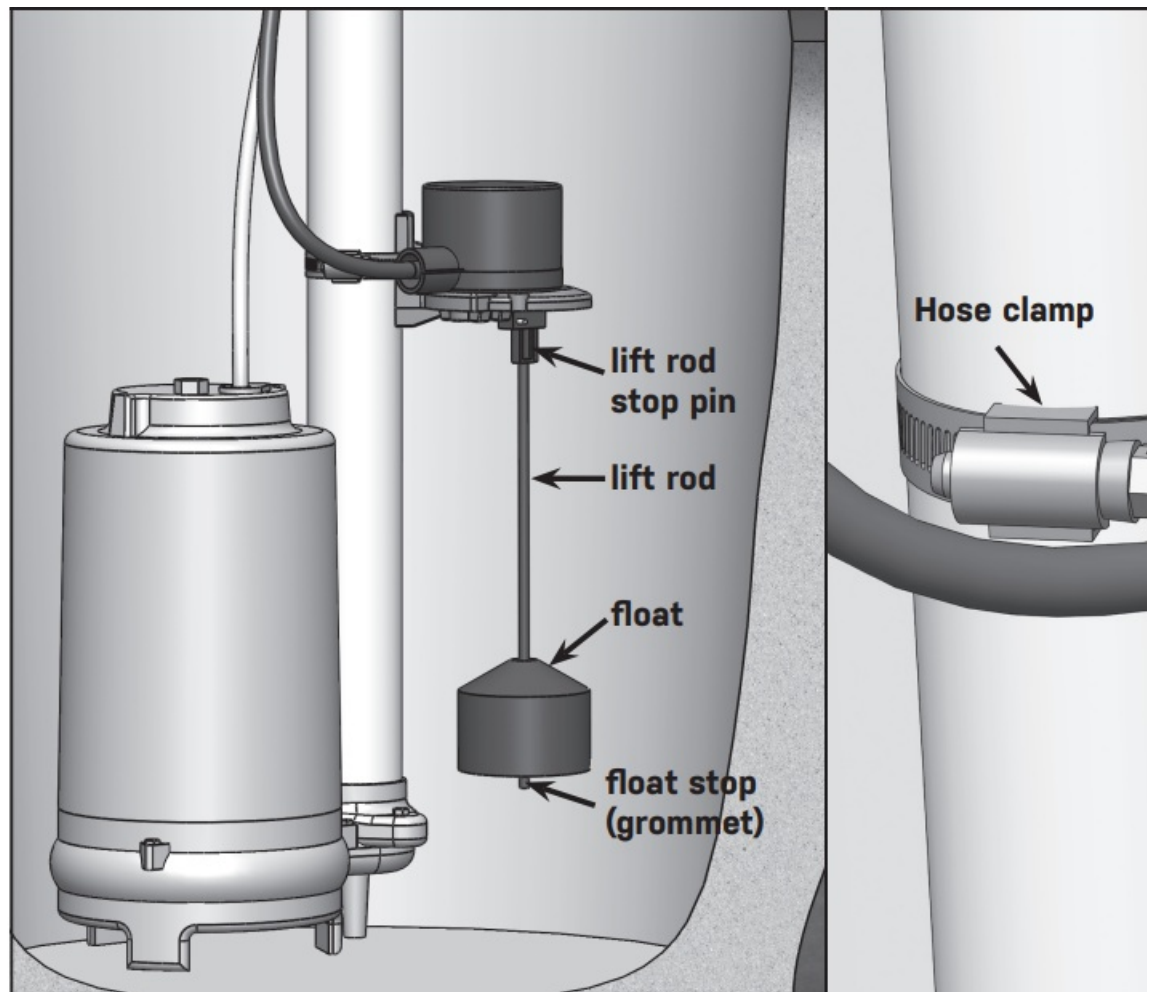
The SJE Vertical Master®II LC (Low Current) switch is not sensitive to turbulence.

It is available in normally open (high level) operation only.

## SJE RHOMBUS FIVE-YEAR LIMITED WARRANTY

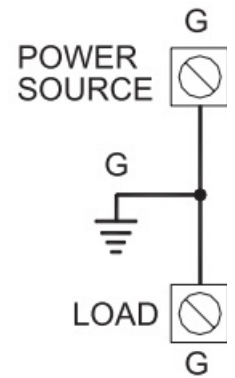
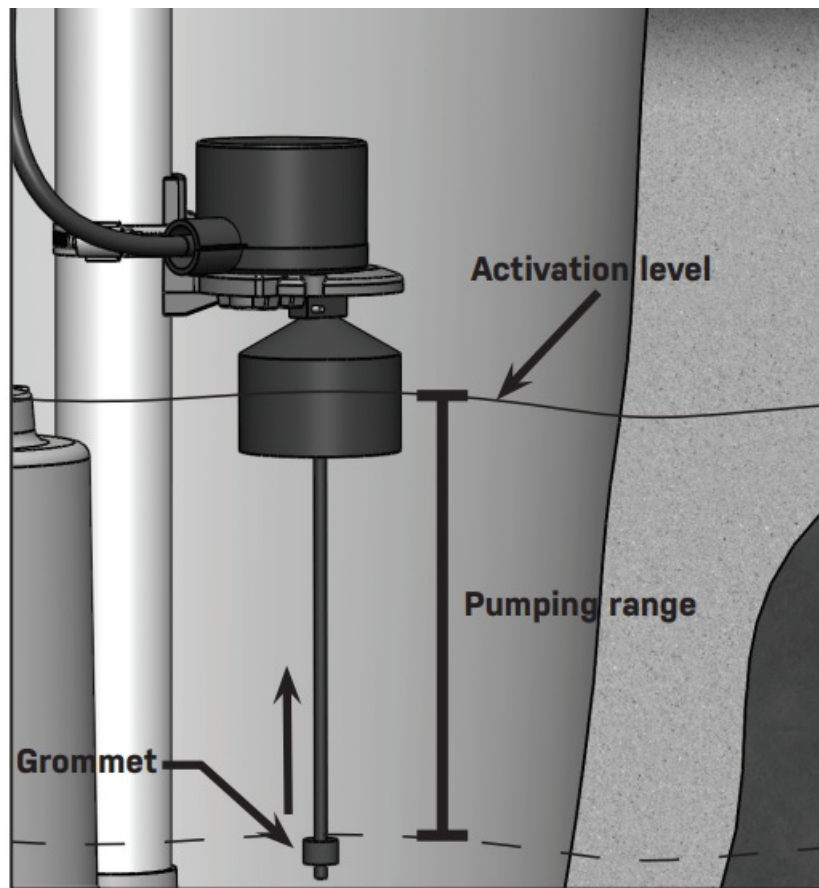
Five-Year Limited Warranty.

For complete terms and conditions, please visit [www.sjerhombus.com](http://www.sjerhombus.com).



Determine location for control switch.

Secure control switch to discharge



Move grommet to adjust pumping range.

For units without plugs, connect w



**WARNING**

Ensure cable connections are performed in a dry junction box or other watertight seal that seals both conductors and cable jacket. Failure to do so could result in electrical shock hazard and/or water traveling down cable and entering the switch. Failure to guard against this may affect switch performance.

## Electrical Warnings



### ELECTRICAL SHOCK HAZARD

Disconnect power before installing or servicing this product. A qualified service person must install and service this product according to applicable electrical and plumbing codes.



### EXPLOSION OR FIRE HAZARD

Do not use with flammable liquids. Install in accordance with ANSI/NFPA 70. Suitable for usage with intrinsically safe circuit extensions as defined by UL 698A.

Failure to follow these precautions could result in serious injury or death. Replace product immediately if switch cable becomes damaged or severed. Keep these instructions with warranty after installation. This product must be installed in accordance with National Electric Code, ANSI/NFPA 70 so as to prevent moisture from entering or accumulating within boxes, conduit bodies, fittings, float housing, or cable.

For detailed specifications on this product, or for the complete line of SJE Rhombus ® panel, alarm, and switch products, visit our website at [www.sjrhombus.com](http://www.sjrhombus.com).

## PREVENTATIVE MAINTENANCE

- Periodically inspect the product. Check that the cable has not become worn or that the housing has not been damaged so as to impair the protection of the product. Replace the product immediately if any damage is found or suspected.
- Periodically check to see that the float and rod are free to move and operate the switch.
- Use only SJE Rhombus ® replacement parts.

## NOTICE!

Products returned must be cleaned, sanitized, or decontaminated as necessary prior to shipment to ensure that employees will not be exposed to health hazards in handling said material. All applicable laws and regulations shall apply.



Technical support: +1-800-746-6287

[techsupport@sjeinc.com](mailto:techsupport@sjeinc.com)

[www.sjrhombus.com](http://www.sjrhombus.com)

Technical Support Hours: Monday – Friday, 7 A.M. to 6 P.M. Central Time

PN 1047889F 05/22

© 2021 SJE, Inc. All Rights Reserved.

SJE RHOMBUS is a trademark of SJE, Inc.

## Documents / Resources



[SJE VERTICALMASTER II LC Control Switch](#) [pdf] Instruction Manual  
VERTICALMASTER II LC Control Switch, VERTICALMASTER II LC, VERTICALMASTER II, VERTICALMASTER II Control Switch, Control Switch, Switch

## References

- [🏠 Home - SJE Rhombus Control Products](#)

[Manuals+](#).