



SIRHC LABS CORTEX EBC Complete Kit with External Instructions

[Home](#) » [SIRHC LABS](#) » SIRHC LABS CORTEX EBC Complete Kit with External Instructions

Contents [[hide](#)]

- [1 SIRHC LABS CORTEX EBC Complete Kit with External](#)
- [2 CORTEX EBC](#)
- [3 VEHICLE CONFIGURATION SETTINGS](#)
- [4 Documents / Resources](#)
- [5 Related Posts](#)

SIRHC LABS

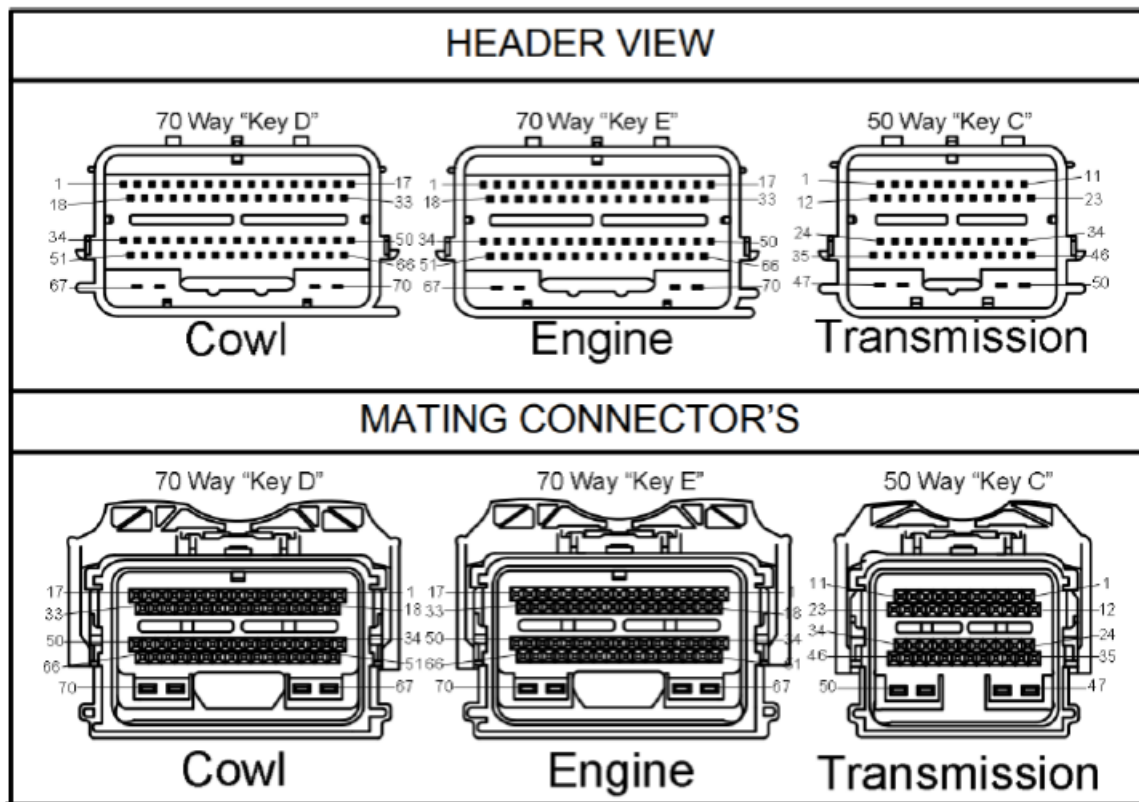
SIRHC LABS CORTEX EBC Complete Kit with External



CORTEX EBC

WIRING

The 2011-2014 Mustang GT PCM is in the passenger side of the engine bay next to the fuse box. The PCM has three connectors. Power, RPM, vehicle speed, and throttle position signals can be accessed at these connectors. When the PCM is installed in the car the Transmission connector will be at the top, the Engine connector will be in the middle, and the Cowl connector will be at the bottom.



The Cortex EBC wiring harness can be connected to the PCM connectors as outlined in the following table (C = Cowl Connector, E= Engine Connector, T = Transmission Connector). RPM and vehicle speed signals are required for boost by gear applications.

CORTEX EBC TO PCM CONNECTIONS

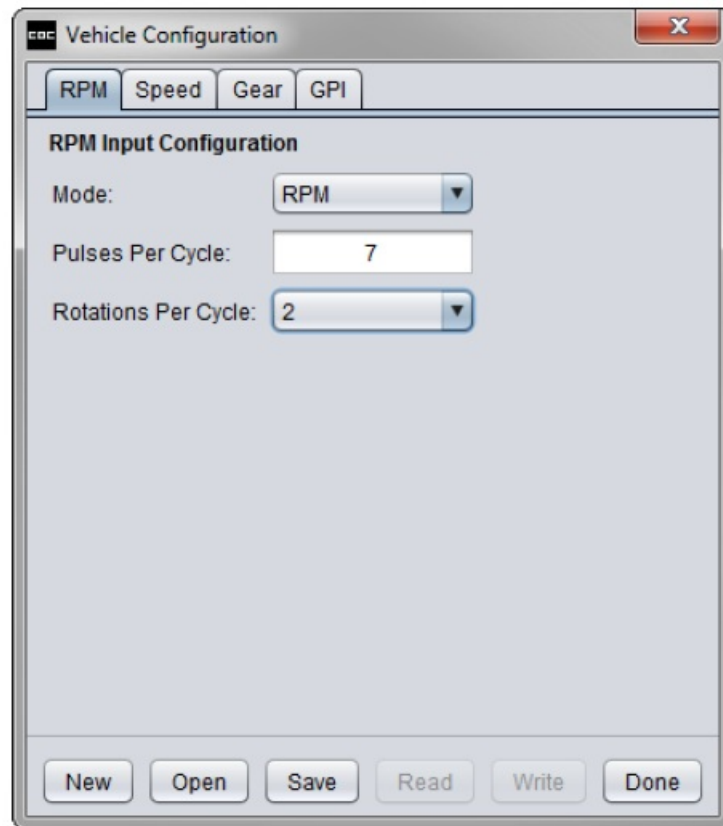
CORTEX SIGNAL	CORTEX WIRE COLOR	PCM SIGNAL	PCM PIN	PCM WIRE COLOR
+12V Power	Red	Switched PCM Power	C-67	Green / Blue
Ground	Black (x2)	Connect to Chassis Near EBC	N/A	N/A
Engine Speed	Pink	Intake Cam Position Sensor (CMP2 1)	E-42	Yellow / Blue
Vehicle Speed	Green	Output Shaft Speed	T-14	Brown / Green
General-Purpose	Orange	Throttle Position 1	E-39	Brown

VEHICLE CONFIGURATION SETTINGS

RPM DETECTION:

- **Mode:** RPM
- **Pulses Per Cycle:** 7

- Rotations Per Cycle: 2

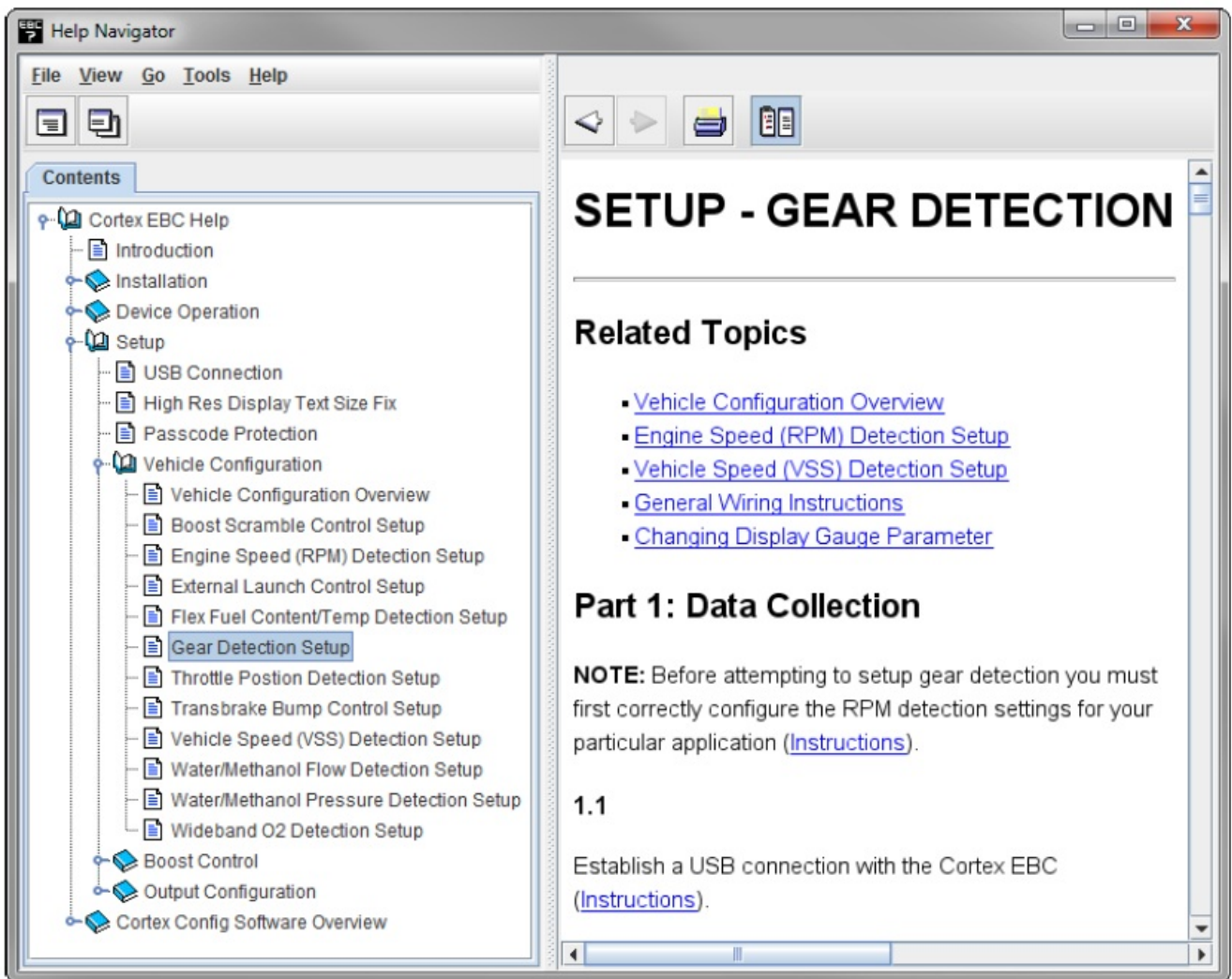


The image shows a 'Vehicle Configuration' dialog box with a tabbed interface. The 'RPM' tab is selected. The 'RPM Input Configuration' section contains three settings: 'Mode' is set to 'RPM', 'Pulses Per Cycle' is set to '7', and 'Rotations Per Cycle' is set to '2'. At the bottom of the dialog are buttons for 'New', 'Open', 'Save', 'Read', 'Write', and 'Done'.

Mode	Pulses Per Cycle	Rotations Per Cycle
RPM	7	2

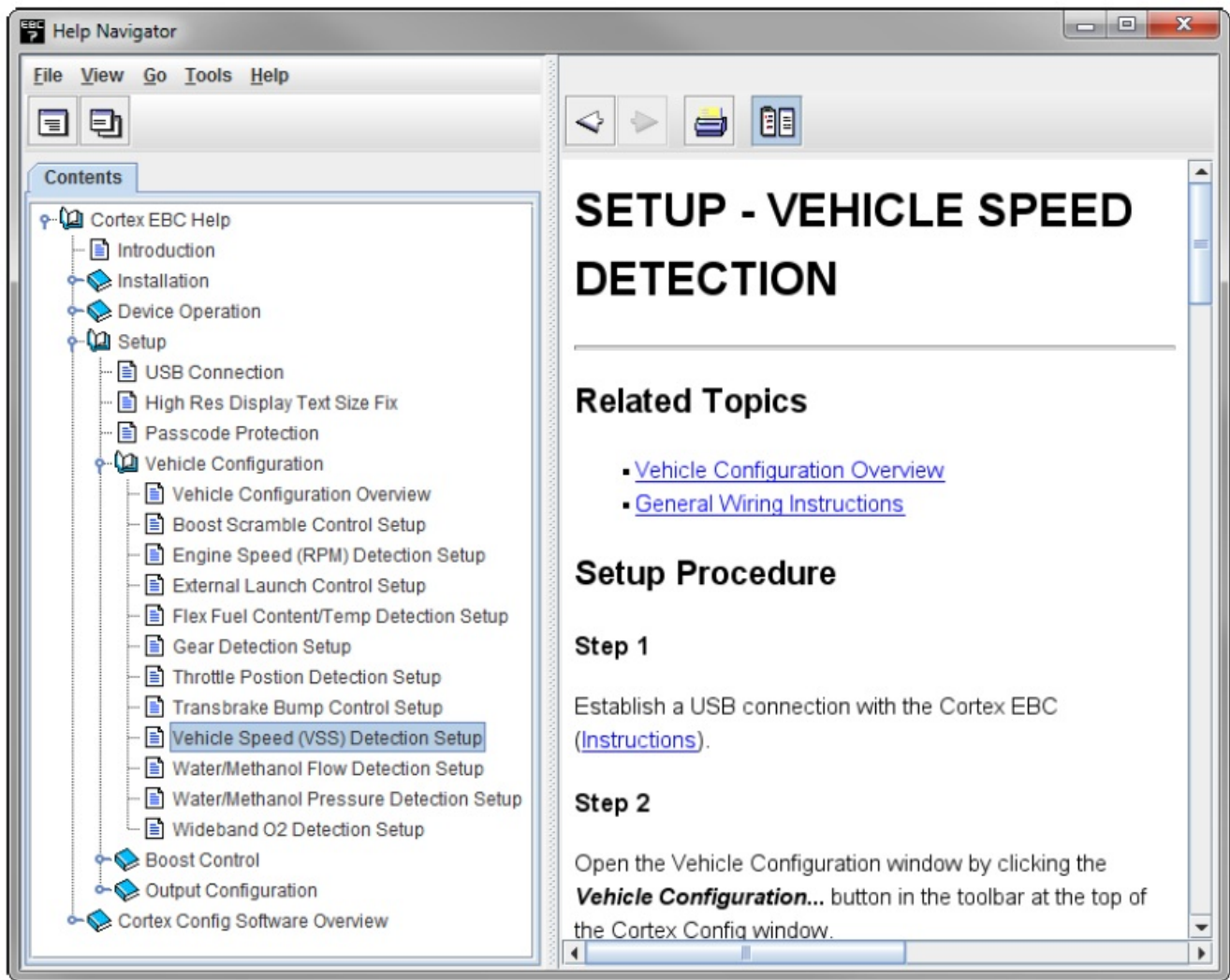
GEAR DETECTION:

- Follow the steps in the Setup Gear Detection section of the Help utility to determine the correct EVS ratio settings for gear detection.



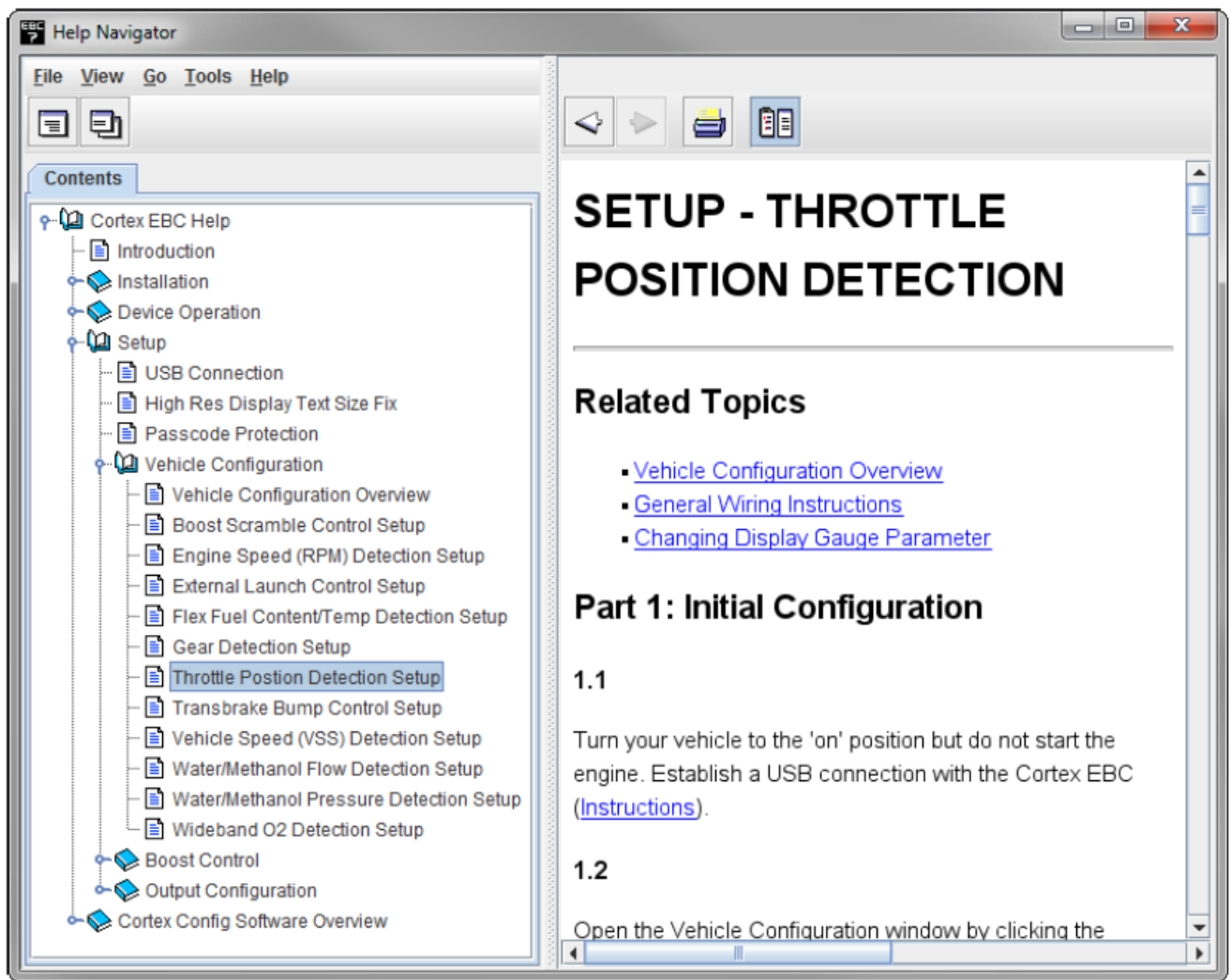
SPEED DETECTION:

- Follow the steps in the Setup Vehicle Speed Detection section of the Help utility to determine the correct Pulses Per Mile setting.
- **NOTE:** Gear detection setup should be performed before calibrating the Pulses Per Mile setting.



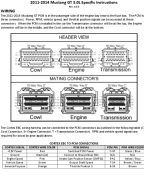
THROTTLE POSITION DETECTION:

- Follow the steps in the Setup Throttle Position Detection section of the Help utility to determine the correct Closed TPS Voltage and Open TPS Voltage settings.



- SIRHC Labs 2022

Documents / Resources

	<p>SIRHC LABS CORTEX EBC Complete Kit with External [pdf] Instructions CORTEX EBC Complete Kit with External, CORTEX EBC, Complete Kit with External, Kit with External, External</p>
---	---