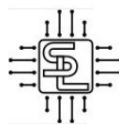


SIRHC LABS 2015-2017 Mustang GT 5.0L Cortex EBC Instructions

[Home](#) » [SIRHC LABS](#) » SIRHC LABS 2015-2017 Mustang GT 5.0L Cortex EBC Instructions 



SIRHC LABS

CORTEX EBC

2015-2017 Mustang GT 5.0L Specific Instructions

Rev 1.0.0

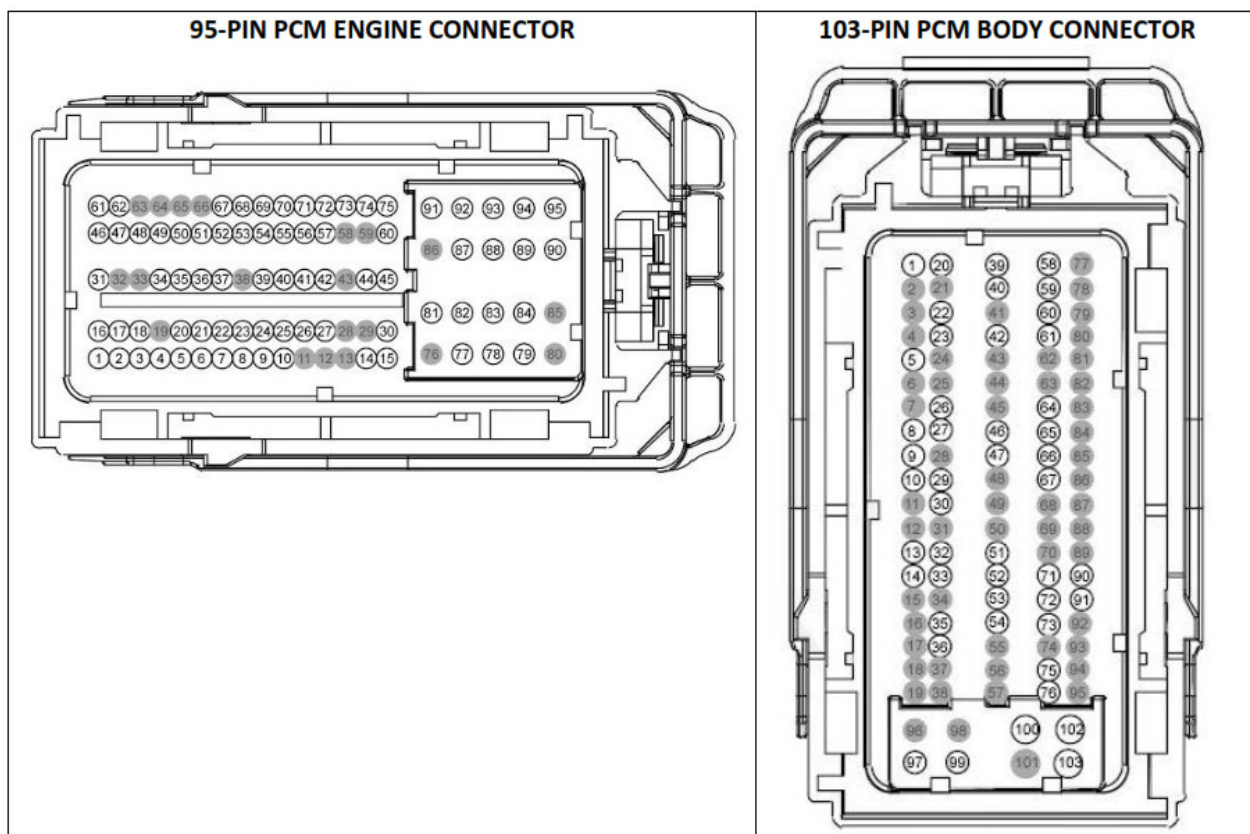
Contents

- [1 2015-2017 Mustang GT 5.0L Cortex EBC](#)
- [2 VEHICLE CONFIGURATION SETTINGS](#)
- [3 GEAR DETECTION](#)
- [4 SPEED DETECTION](#)
- [5 Documents / Resources](#)
- [6 Related Posts](#)

2015-2017 Mustang GT 5.0L Cortex EBC

WIRING

The 2015-2017 Mustang GT PCM is in the passenger side of the engine bay next to the fuse box. The PCM has two connectors. Power, RPM, vehicle speed, and throttle position signals can be accessed at these connectors.



The Cortex EBC wiring harness can be connected to the PCM connectors as outlined in the following table (B = Body Connector, E = Engine Connector). RPM and vehicle speed signals are required for boost by gear applications.

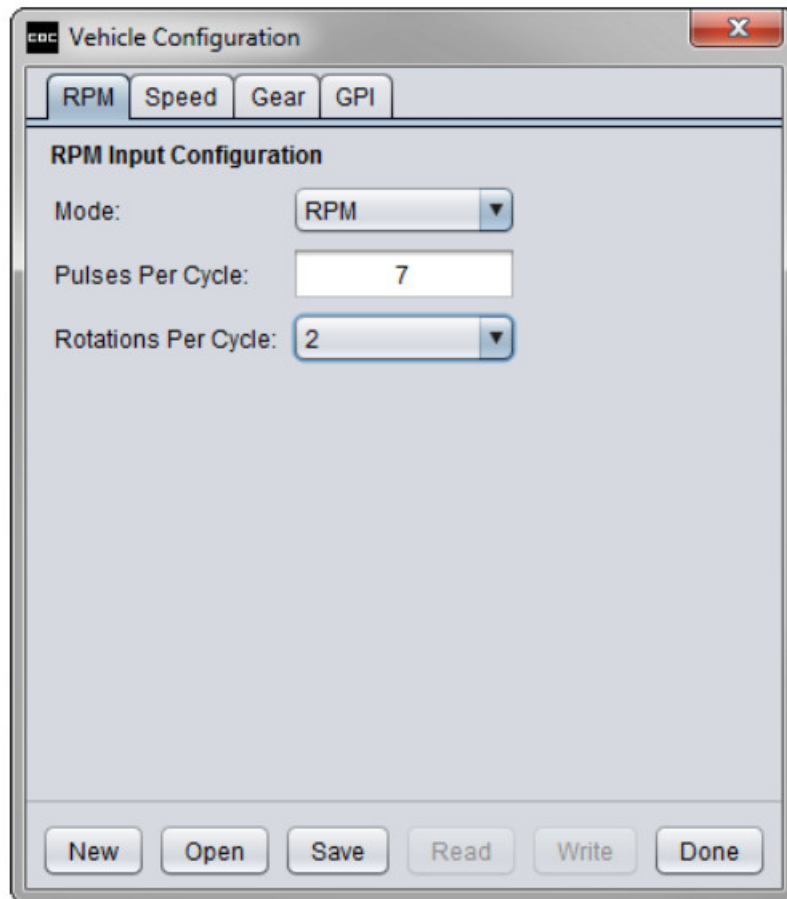
CORTEX EBC TO PCM CONNECTIONS

CORTEX SIGNAL	CORTEX WIRE COLOR	PCM SIGNAL	PCM PIN	PCM WIRE COLOR
+12V Power	Red	Switched PCM Power	B-97	Blue
Ground	Black (x2)	Connect to Chassis Near EBC	N/A	N/A
Engine Speed	Pink	Intake Cam Position Sensor (CMP 21)	E-42	Yellow / Blue
Vehicle Speed	Green	Output Shaft Speed	E-26	Yellow / Orange
General-Purpose	Orange	Throttle Position 1	E-10	Brown

VEHICLE CONFIGURATION SETTINGS

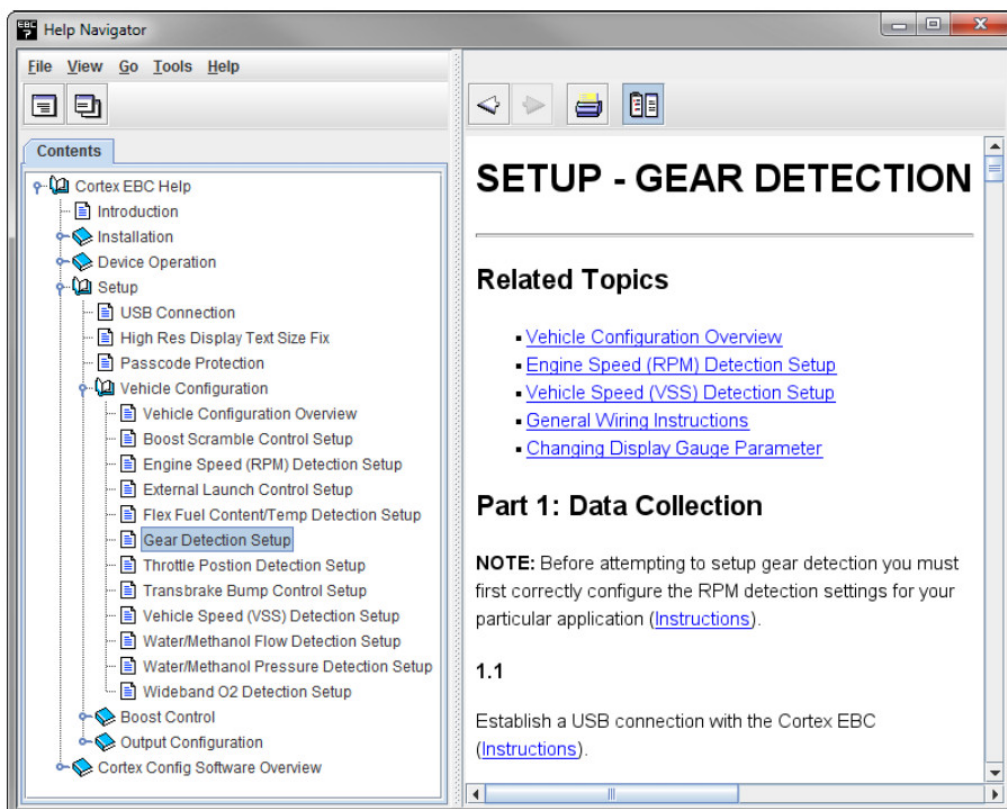
RPM DETECTION:

- Mode: RPM
- Pulses Per Cycle: 7
- Rotations Per Cycle: 2



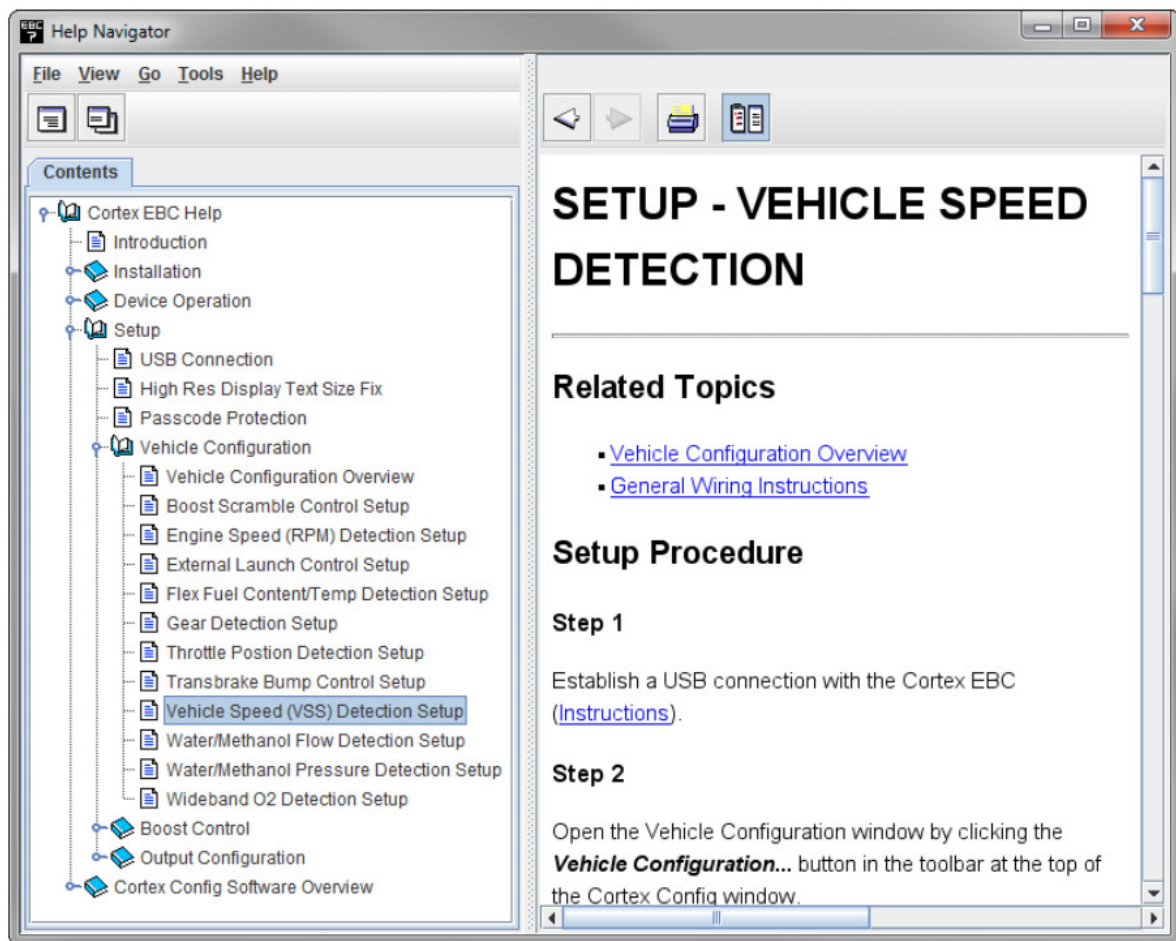
GEAR DETECTION

- Follow the steps in the Setup – Gear Detection section of the Help utility to determine the correct EVS ratio settings for gear detection.



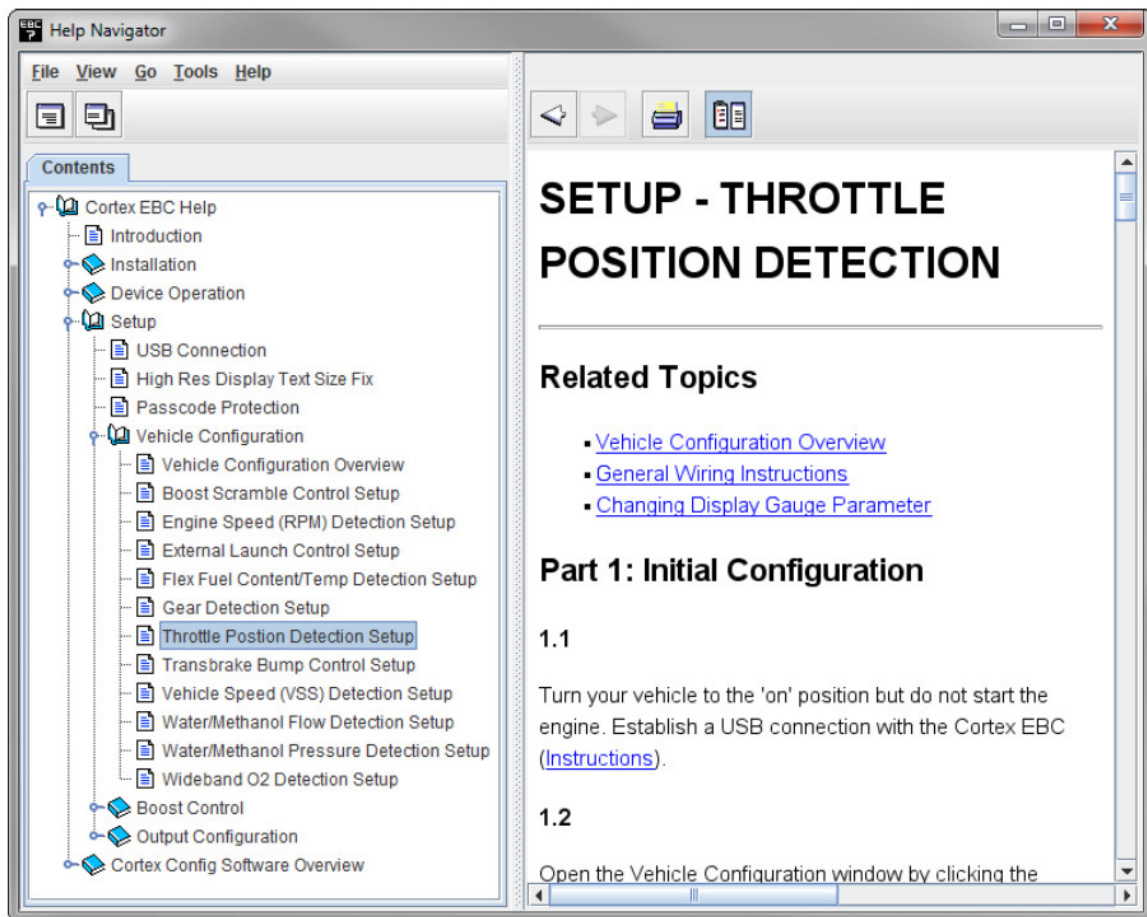
SPEED DETECTION

- Follow the steps in the Setup – Vehicle Speed Detection section of the Help utility to determine the correct Pulses Per Mile setting.
- **NOTE:** Gear detection setup should be performed before calibrating the Pulses Per Mile setting.



THROTTLE POSITION DETECTION

- Follow the steps in the Setup – Throttle Position Detection section of the Help utility to determine the correct Closed TPS Voltage and Open TPS Voltage settings.



Documents / Resources

	<p>SIRHC LABS 2015-2017 Mustang GT 5.0L Cortex EBC [pdf] Instructions</p> <p>2015-2017 Mustang GT 5.0L Cortex EBC, 2015-2017, Mustang GT 5.0L Cortex EBC, Cortex EBC, EBC</p>
--	--