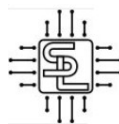


# SIRHC LABS 2005-2010 Mustang GT 4.6L Cortex EBC Instructions

[Home](#) » [SIRHC LABS](#) » SIRHC LABS 2005-2010 Mustang GT 4.6L Cortex EBC Instructions 



**SIRHC LABS**

**CORTEX EBC**

**2005-2010 Mustang GT 4.6L Specific Instructions**

**Rev 3.0.0**

## Contents

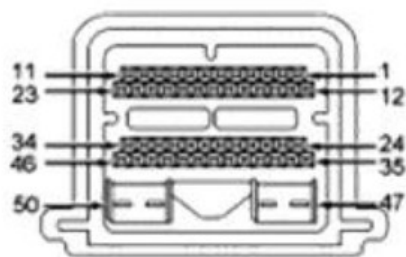
- [1 2005-2010 Mustang GT 4.6L Cortex EBC](#)
- [2 VEHICLE CONFIGURATION SETTINGS](#)
- [3 GEAR DETECTION](#)
- [4 SPEED DETECTION](#)
- [5 Documents / Resources](#)
- [6 Related Posts](#)

## 2005-2010 Mustang GT 4.6L Cortex EBC

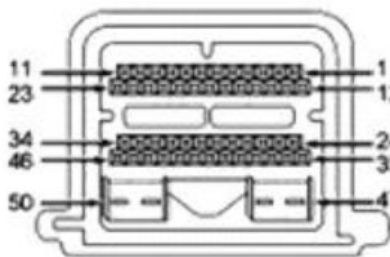
### WIRING

The 2005-2010 Mustang PCM is in the passenger side of the engine bay next to the fuse box. Power, RPM, vehicle speed, and throttle position signals can be accessed at these connectors. When the PCM is installed in the car the Transmission connector is on the top, the Body connector is in the middle, and the Engine connector is on the bottom.

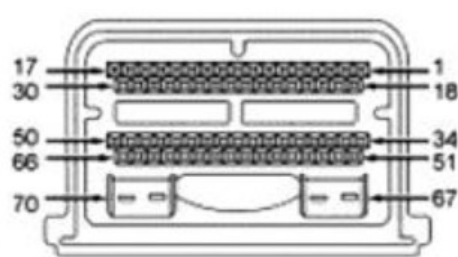
### PCM HARNESS CONNECTORS



**C175E**  
Transmission  
(50-Pin)



**C175B**  
Body  
(50-Pin)



**C175T**  
Engine  
(70-Pin)

The Cortex EBC wiring harness and Speed Sensor Adapter V2 can be connected to the PCM connectors as outlined in the following tables (B = Body Connector, E= Engine Connector, T = Transmission Connector). RPM and vehicle speed signals are required for boost by gear applications. The Speed Sensor Adapter V2 can be connected to the same power and ground source as the Cortex EBC if desired.

#### **CORTEX EBC TO PCM CONNECTIONS**

<b>CORTEX SIGNAL</b>	<b>CORTEX WIRE COLOR</b>	<b>PCM SIGNAL</b>	<b>PCM PIN</b>	<b>PCM WIRE COLOR</b>
+12V Power	Red	PCM Power	B-35	Red
Ground	Black (x2)	Connect to Chassis Near EBC	N/A	N/A
Engine Speed	Pink	Cam Position Sensor 1	E-45	Dark Blue / Orange
General-Purpose	Orange	Throttle Position 1	E-61	Gray / White

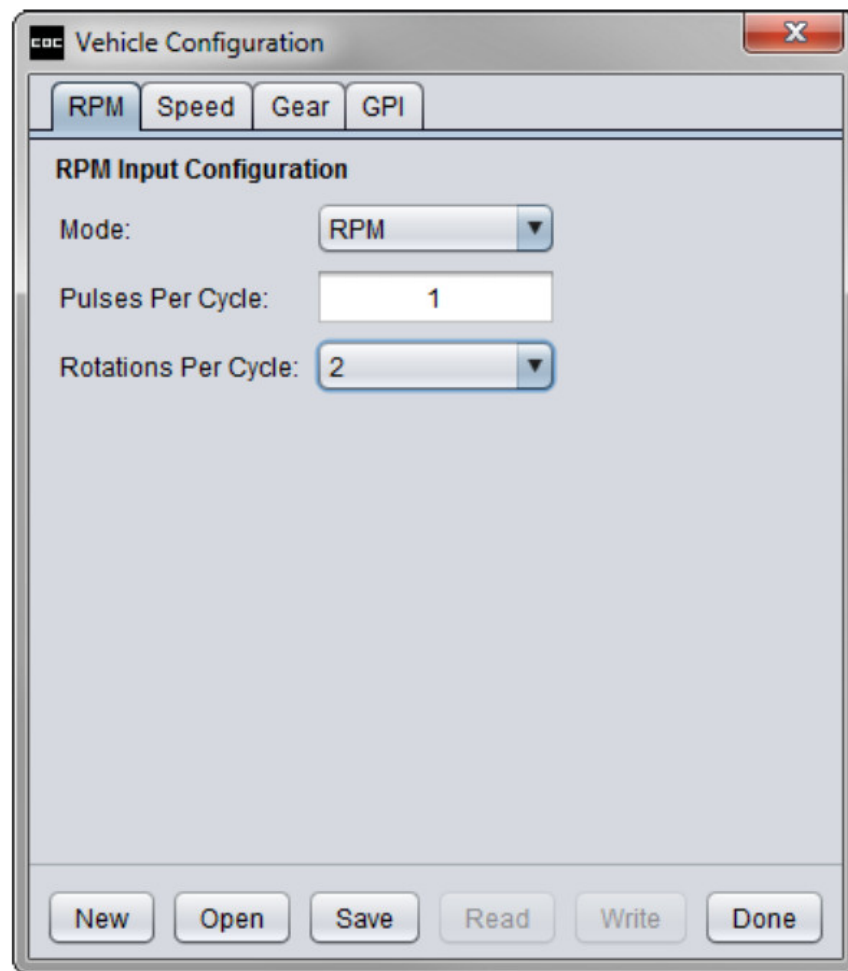
#### **SPEED SENSOR ADAPTER V2 CONNECTIONS**

<b>SPEED SENSOR ADAPTER V2 SIGNAL</b>	<b>SPEED SENSOR ADAPTER V2 WIRE COLOR</b>	<b>PCM SIGNAL</b>	<b>PIN</b>	<b>PCM WIRE COLOR</b>
Sensor IN+	Green	Output Shaft Speed	T-3	Dark Blue / Yellow
Sensor IN-	Blue	Signal Return	T-41	Gray / Red
—	—	CORTEX SIGNAL	—	CORTEX WIRE COLOR
Output	White	Vehicle Speed	—	Green

#### **VEHICLE CONFIGURATION SETTINGS**

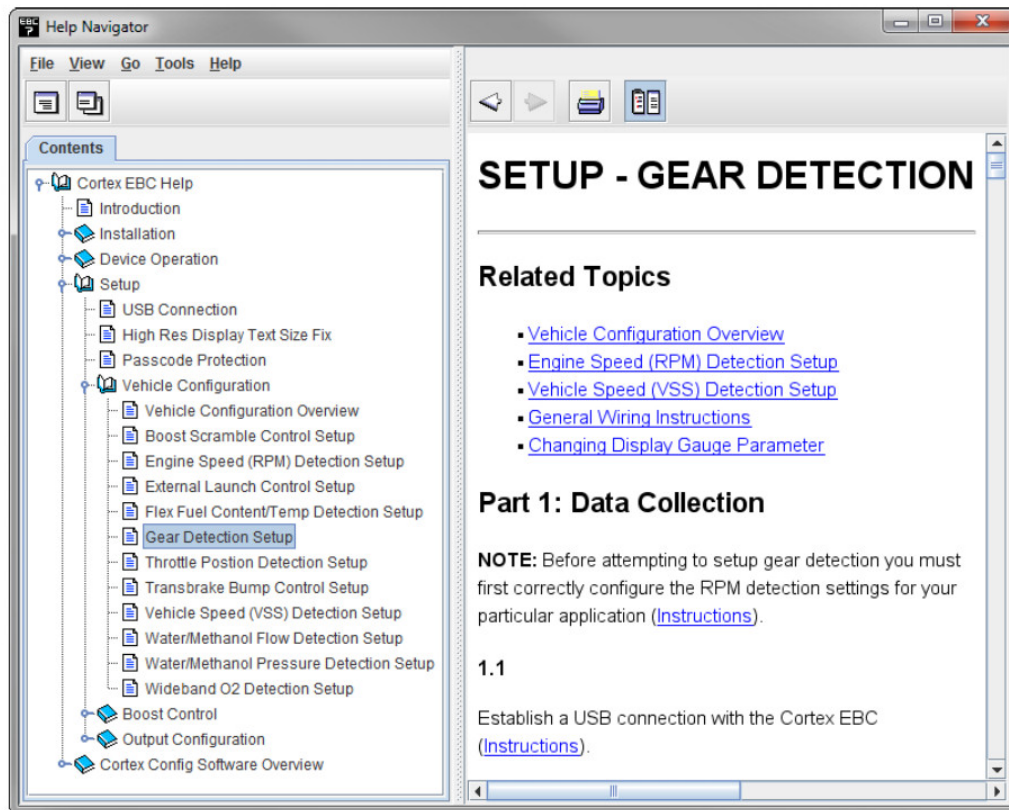
##### **RPM DETECTION:**

- Mode: RPM
- Pulses Per Cycle: 1
- Rotations Per Cycle: 2



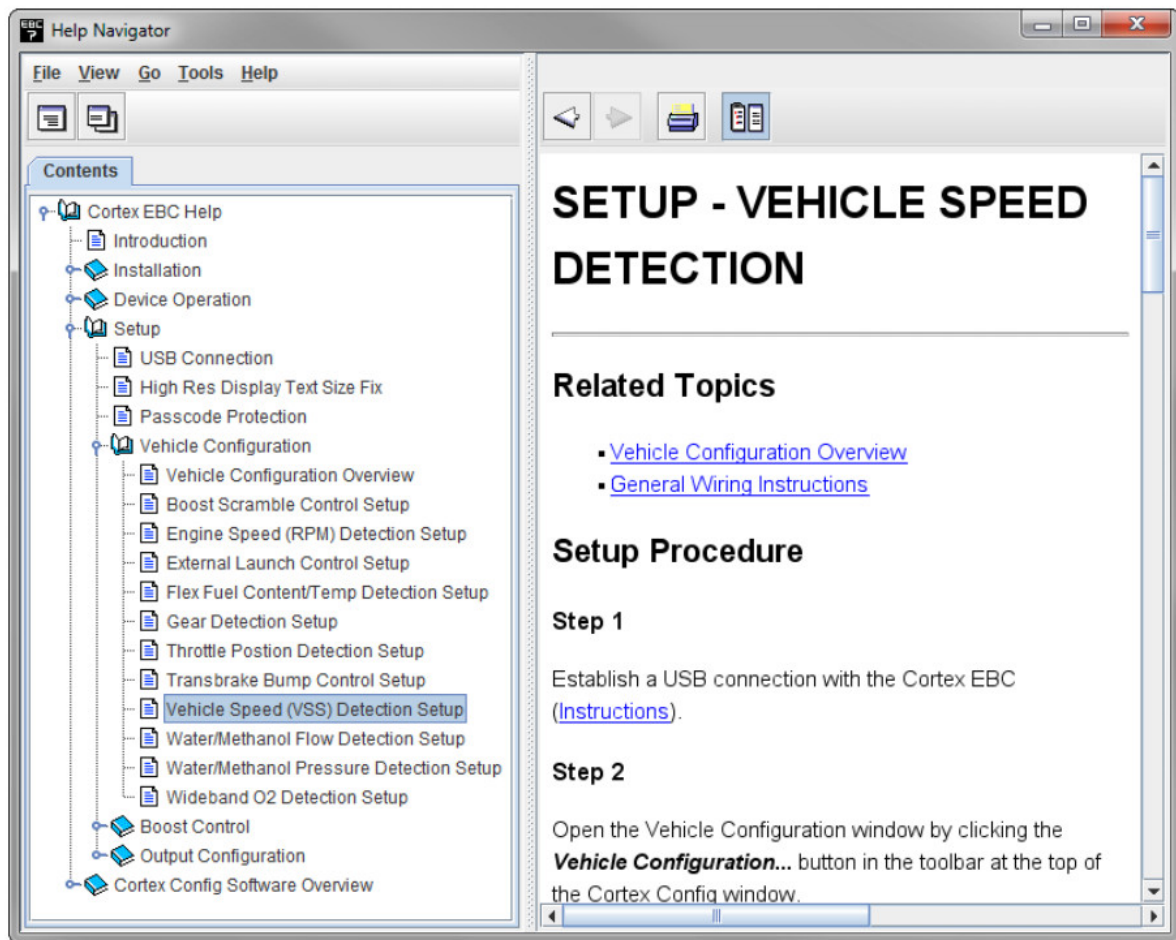
## GEAR DETECTION

- Follow the steps in the Setup – Gear Detection section of the Help utility to determine the correct EVS ratio settings for gear detection.



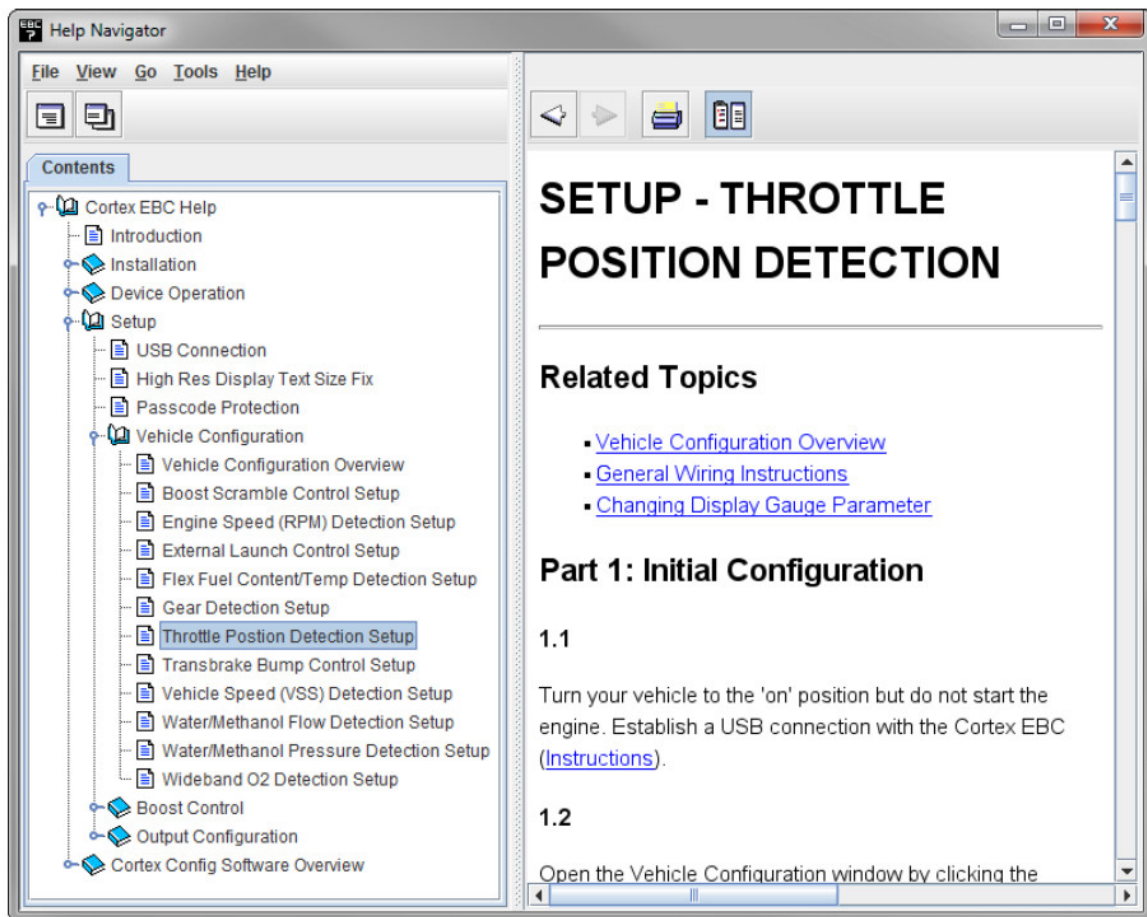
## SPEED DETECTION

- Follow the steps in the Setup – Vehicle Speed Detection section of the Help utility to determine the correct Pulses Per Mile setting.
- **NOTE:** Gear detection setup should be performed before calibrating the Pulses Per Mile setting.



## THROTTLE POSITION DETECTION

- Follow the steps in the Setup – Throttle Position Detection section of the Help utility to determine the correct Closed TPS Voltage and Open TPS Voltage settings.



## Documents / Resources

	<p><b><a href="#">SIRHC LABS 2005-2010 Mustang GT 4.6L Cortex EBC</a></b> [pdf] Instructions  2005-2010 Mustang GT 4.6L Cortex EBC, 2005-2010, Mustang GT 4.6L Cortex EBC, Cortex EBC, EBC</p>
--	--