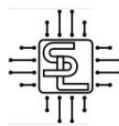


# SIRHC LABS 1999-2004 Mustang GT 4.6L Cortex EBC Instructions

[Home](#) » [SIRHC LABS](#) » SIRHC LABS 1999-2004 Mustang GT 4.6L Cortex EBC Instructions 



**SIRHC LABS**

**CORTEX EBC**

**1999-2004 Mustang GT 4.6L Specific Instructions**

**Rev 3.0.0**

## Contents

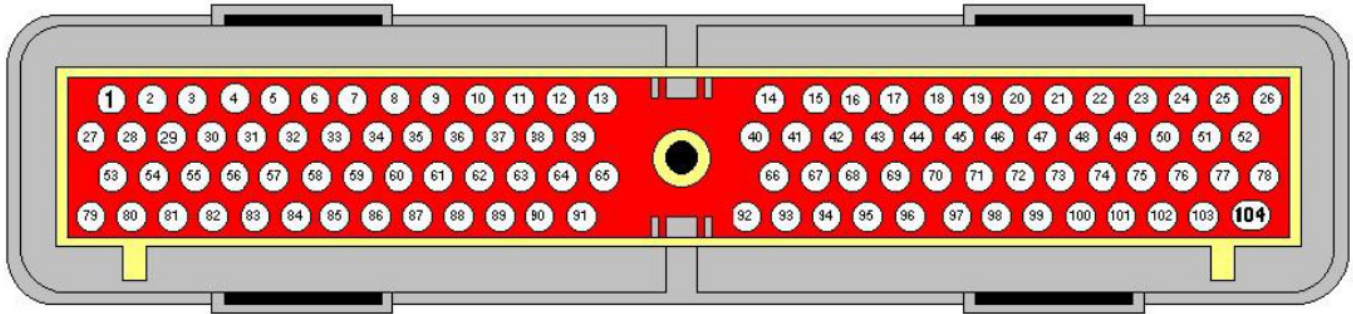
- [1 1999-2004 Mustang GT 4.6L Cortex EBC](#)
- [2 VEHICLE CONFIGURATION SETTINGS](#)
- [3 GEAR DETECTION](#)
- [4 SPEED DETECTION](#)
- [5 Documents / Resources](#)
- [6 Related Posts](#)

## 1999-2004 Mustang GT 4.6L Cortex EBC

### WIRING

The 1999-2004 Mustang PCM is inside the vehicle behind the kick panel in the passenger side foot well near the door. The PCM has a single 104-pin connector. Power, ground, RPM, vehicle speed, and throttle position signals can be accessed at the PCM connector.

## 104-PIN PCM CONNECTOR



The Cortex EBC wiring harness can be connected to the 104-pin PCM connector as outlined in the following table. RPM and vehicle speed signals are required for boost by gear applications.

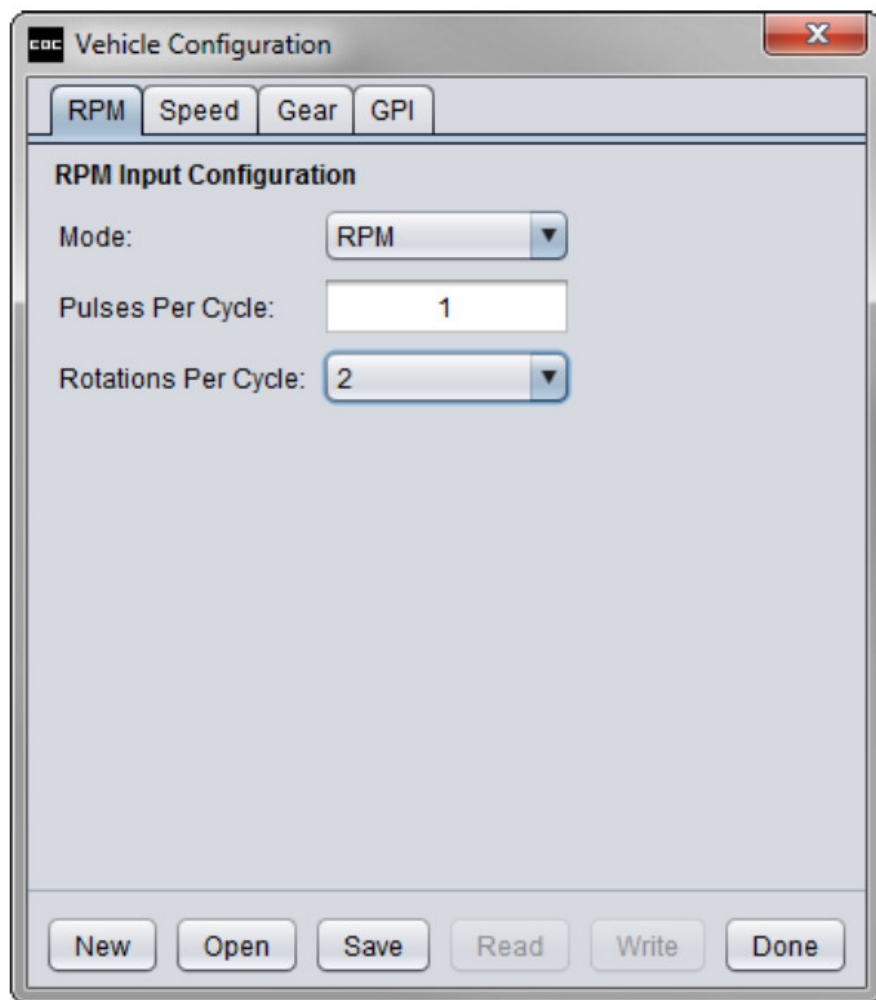
### CORTEX EBC TO PCM CONNECTIONS

CORTEX SIGNAL	CORTEX WIRE COLOR	PCM SIGNAL	PCM PIN	PCM WIRE COLOR
+12V Power	Red	Switched PCM Power	71	Red
Ground	Black (x2)	Connect to Chassis Near EBC	N/A	N/A
Engine Speed	Pink	Camshaft Position Sensor	85	Dark Blue / Orange
Vehicle Speed	Green	Vehicle Speed Output	68	White / Orange
General-Purpose	Orange	Throttle Position	89	Gray / White

### VEHICLE CONFIGURATION SETTINGS

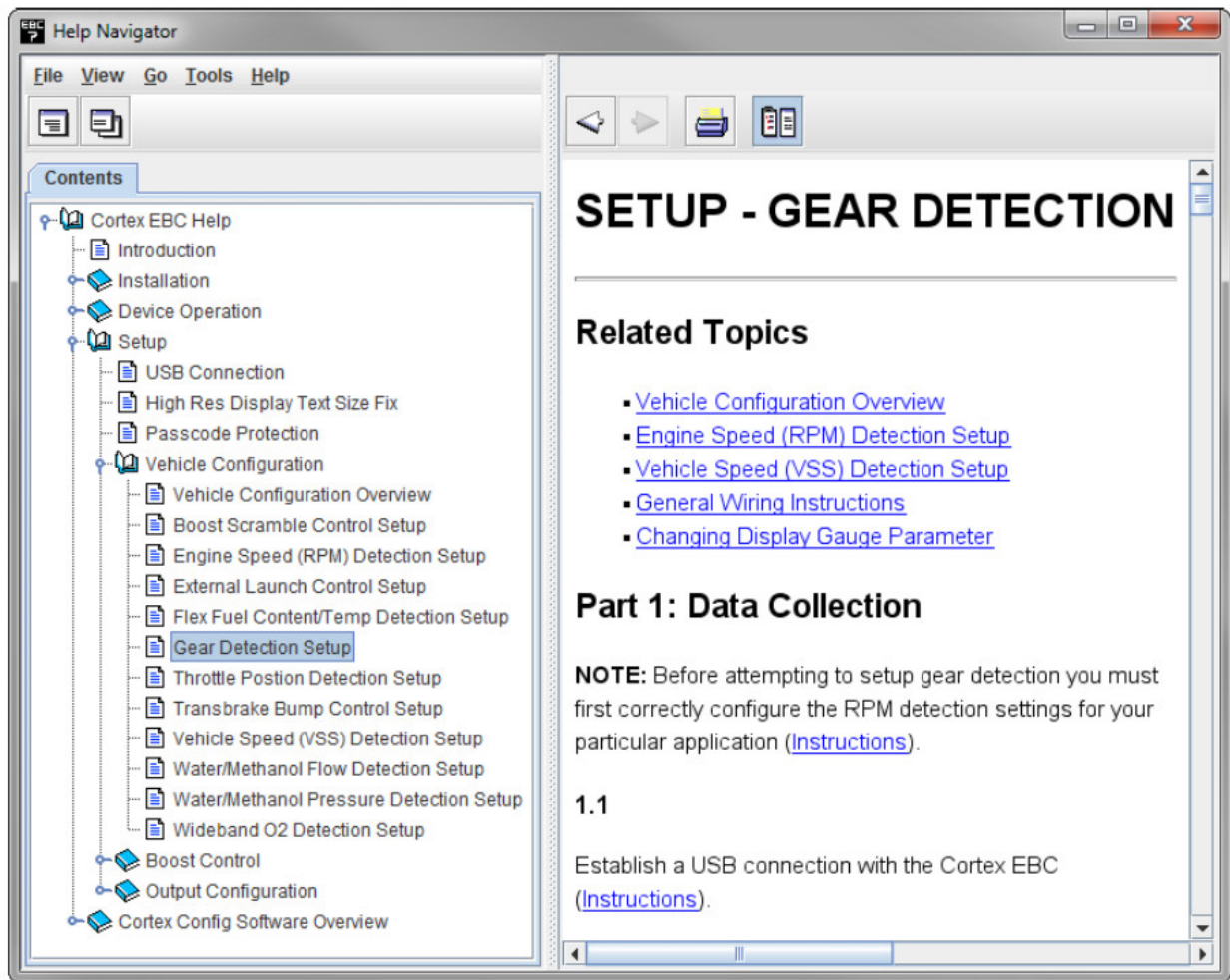
#### RPM DETECTION:

- Mode: RPM
- Pulses Per Cycle: 1
- Rotations Per Cycle: 2



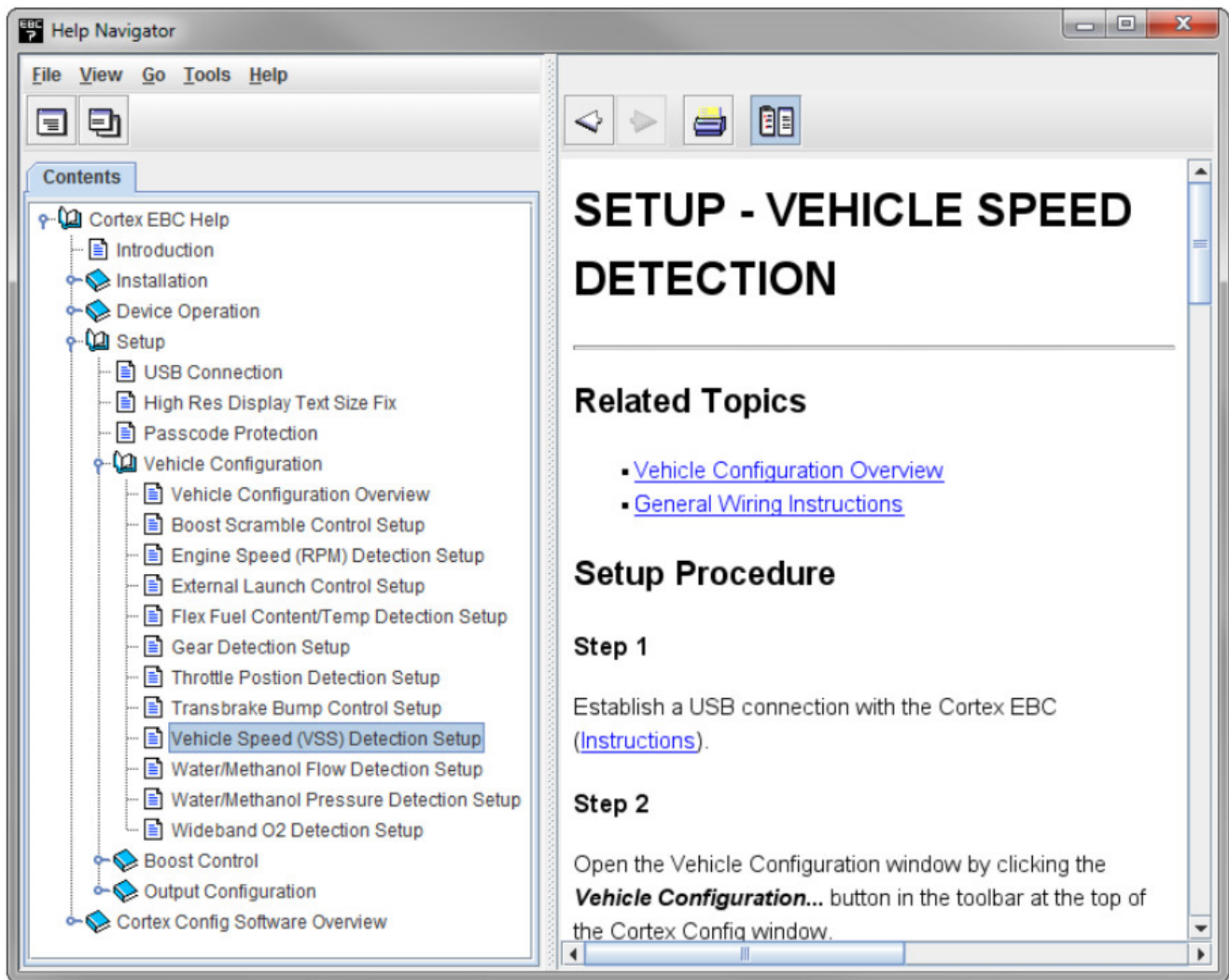
## GEAR DETECTION

- Follow the steps in the Setup – Gear Detection section of the Help utility to determine the correct EVS ratio settings for gear detection.



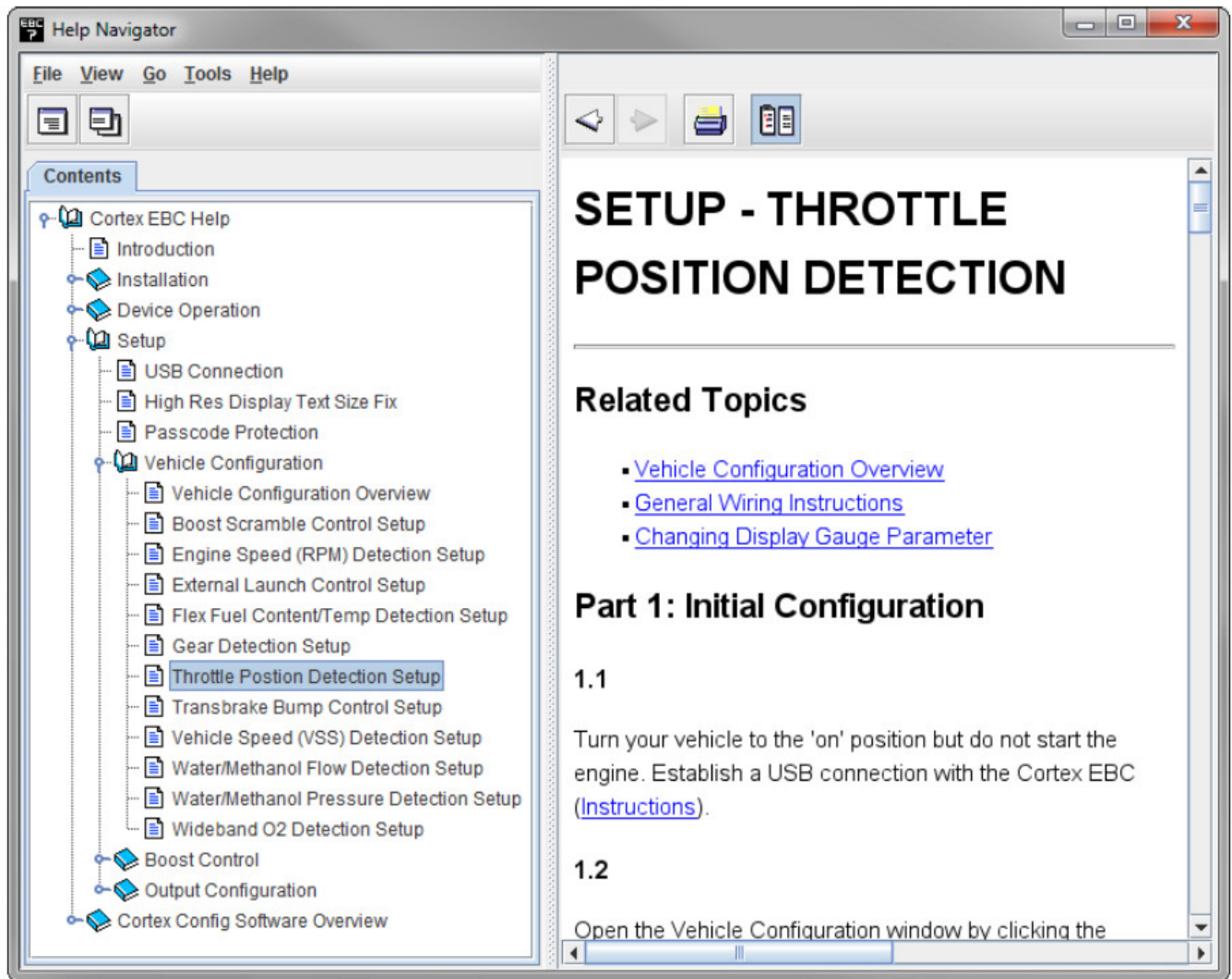
## SPEED DETECTION

- Follow the steps in the Setup – Vehicle Speed Detection section of the Help utility to determine the correct Pulses Per Mile setting.
- NOTE: Gear detection setup should be performed before calibrating the Pulses Per Mile setting.




#### THROTTLE POSITION DETECTION:

- Follow the steps in the Setup – Throttle Position Detection section of the Help utility to determine the correct Closed TPS Voltage and Open TPS Voltage settings.



## Documents / Resources

	<p><b><a href="#">SIRHC LABS 1999-2004 Mustang GT 4.6L Cortex EBC</a></b> [pdf] Instructions</p> <p>1999-2004 Mustang GT 4.6L Cortex EBC, 1999-2004, Mustang GT 4.6L Cortex EBC, Cortex EBC, EBC</p>
---	--