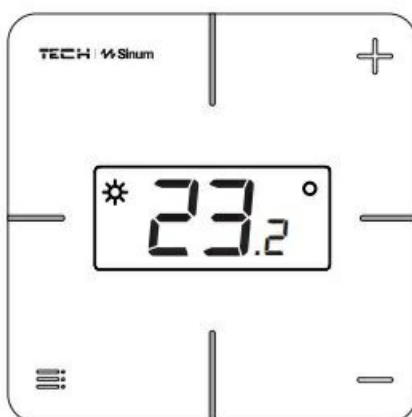


## Sinum R-S1 Room Temperature Regulator User Guide

[Home](#) » [Sinum](#) » Sinum R-S1 Room Temperature Regulator User Guide 

Sinum R-S1 Room Temperature  
Regulator User Guide

**TECH | Sinum**

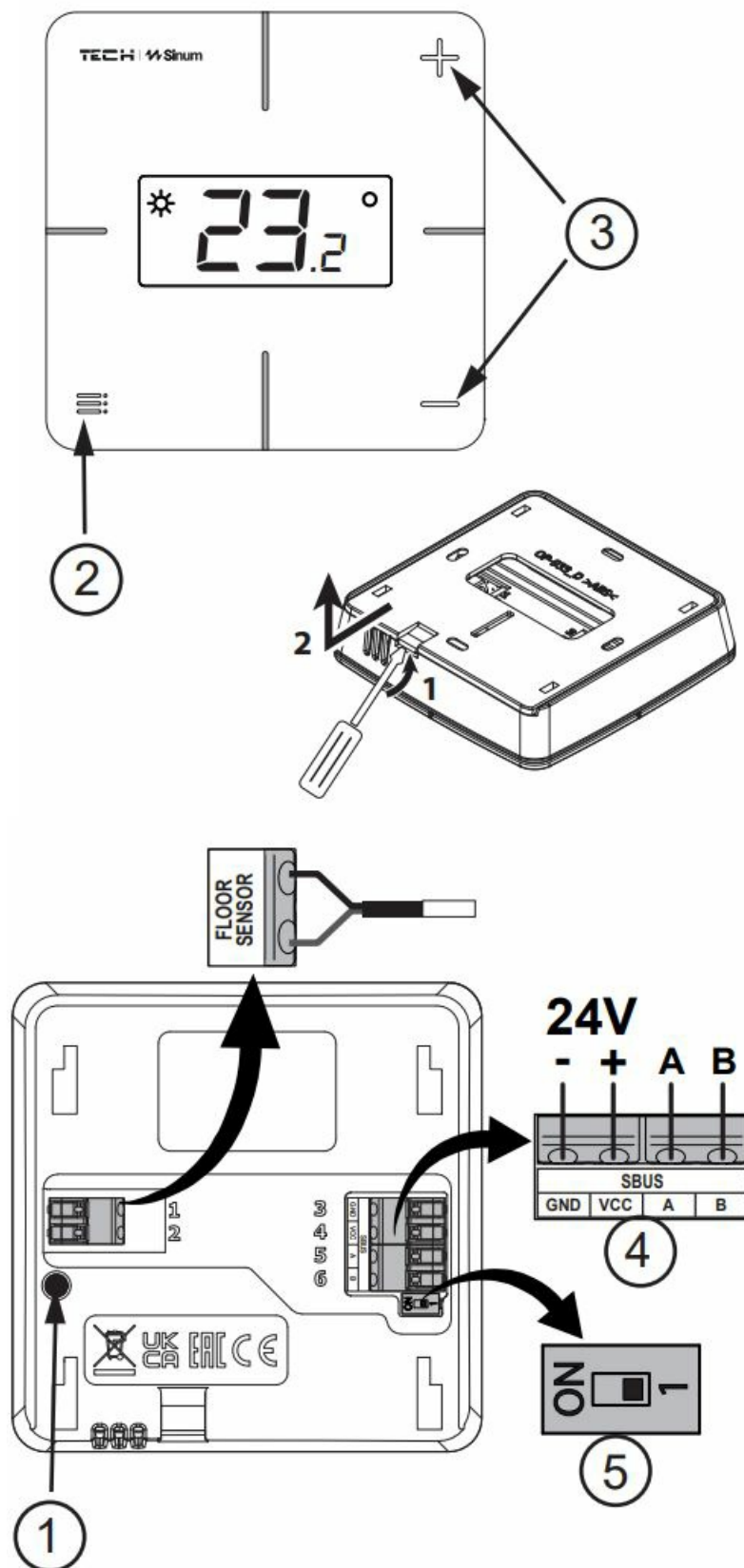


**R-S1**

[www.sinum.eu](http://www.sinum.eu)

**UK  
CA EAC**

**TECH STEROWNIKI II Sp. z o.o.**  
ul. Biała Droga 31  
34-122 Wieprz



The R-S1 room regulator is equipped with a temperature and air humidity sensor. Additionally, a floor sensor can be connected to the regulator. Current measurements are displayed on the device and sent to the Sinum Central device, where they can be freely used to create various automations. Communication with the Sinum Central device, is done by wire. The regulator is mounted to an electrical box with a diameter of 60 mm.


## Contents

- 1 Description
- 2 How to register the device in the sinum system
- 3 How to identify the device in the Sinum system
- 4 Operation
- 5 Menu
- 6 Technical data
- 7 Notes
- 8 EU Declaration of conformity
- 9 Service
- 10 Documents / Resources
  - 10.1 References

## Description


1. Registration button
2. Main button
3. Navigation buttons
4. SBUS communication connector
5. Terminating resistor

## How to register the device in the sinum system


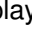
The device should be connected to the Sinum central device using the SBUS connector (4) , and then enter the address of the Sinum central device in the browser and log in to the device. In the main panel, click the Settings > Devices > SBUS devices >  > Add device. Then briefly press the registration button (1) on the device. After a properly completed registration process, an appropriate message will appear on the screen. Additionally, the user can name the device and assign it to a specific room.



INFO: When registering the regulator, the humidity sensor and floor sensor (if it is connected) will also be registered automatically.

## How to identify the device in the Sinum system

To identify the device in the Sinum Central, activate the Identification Mode in the Settings > Devices > SBUS Devices >  > Identification Mode tab and hold the registration button on the device for 3-4 seconds. The device used will be highlighted on the screen.

## Operation

- Heating/cooling control \* (icon ) is possible after assigning the controller in the Sinum Central device to a virtual thermostat. On the display, the icon  can have different meaning:
  - the icon is on permanently
  - heating of the room (heating mode)
  - the icon is blinking
  - room cooling (cooling mode)
  - no icon
  - no need for heating/cooling

- Changing the preset temperature with the + and – buttons and confirming with the Menu button . The set temperature will be permanent. If the regulator is assigned to a virtual thermostat, after changing the temperature, use the + and – to specify the time range of the set temperature [0 ÷ 24h, Con (permanently) or Off (inactive change)], confirm with the Menu button .
- Controller connection – the system has a terminating connection. The position of the regulator on the transmission line with the Sinum Central is determined by the position of the terminating switch 5 . Set to ON position (regulator at the end of the line) or position 1 (regulator in the middle of the line).

\* option available depending on the program version

## Menu

Hold down the Menu button  until appears **CAL** option. change options with + and - , confirm with Menu button. Options available:

**CAL** - temperature sensor calibration,

**Loc** - activation/deactivation of the button lock; to unlock, hold down the + and - buttons simultaneously for 3 seconds,

**rEG** - device registration,

**Inf** - software information ,

**dEF** - factory reset,

**rEt** - exit from the Menu,

## Technical data

Power supply	24V DC $\pm 10\%$
Max. power consumption	0,2W
Operation temperature	5 ÷ 50°C

## Notes

TECH Controllers is not responsible for any damages resulting from improper use of the system. The range depends on the conditions in which the device is used and the structure and materials used in the object construction. The manufacturer reserves the right to improve devices, update software and related documentation. The graphics are provided for illustration purposes only and may differ slightly from the actual look. The diagrams serve as examples. All changes are updated on an ongoing basis on the manufacturer's website. Before using the device for the first time, read the following regulations carefully. Not obeying these instructions may lead to personal injuries or controller damage. The device should be installed by a qualified person. It is not intended to be operated by children. It is a live electrical device. Make sure the device is disconnected from the mains before performing any activities involving the power supply (plugging cables, installing the device etc.). The device is not water resistant.



The product may not be disposed of to household waste containers. The user is obliged to transfer their used

equipment to a collection point where all electric and electronic components will be recycled.

## EU Declaration of conformity

Tech Sterowniki II Sp. z o.o. , ul. Biała Droga 34, Wieprz (34-122)

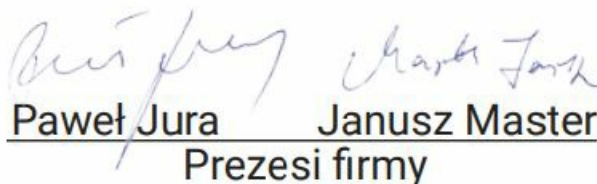
Hereby, we declare under our sole responsibility that the room regulator R-S1 is compliant with Directive :

• 2014/35/UE • 2014/30/UE • 2009/125/WE • 2017/2102/UE

For compliance assessment, harmonized standards were used:

- PN-EN IEC 60730-2-9:2019-06
- PN-EN 60730-1:2016-10
- EN IEC 63000:2018 RoHS

Wieprz, 01.07.2024

  
Paweł Jura Janusz Master  
Prezesi firmy

The full text of the EU declaration of conformity and the user manual are available after scanning the QR code or at [www.tech-controllers.com/manuals](http://www.tech-controllers.com/manuals)

## Service

tel: +48 33 875 93 80 [www.tech-controllers.com](http://www.tech-controllers.com)  
[support.sinum@techsterowniki.pl](mailto:support.sinum@techsterowniki.pl)

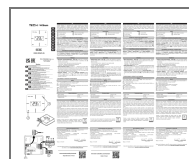
[www.tech-controllers.com/manuals](http://www.tech-controllers.com/manuals)

Made in Poland



<https://tech-controllers.com/manuals>

## Documents / Resources



[Sinum R-S1 Room Temperature Regulator](#) [pdf] User Guide

R-S1, R-S1 Room Temperature Regulator, R-S1, Room Temperature Regulator, Temperature Regulator, Regulator

## References

- [tech-controllers.com](http://www.tech-controllers.com)

- [!\[\]\(2dc8cdc0c918df88cde61039ecf68682\_img.jpg\) reg.com](#)
- [!\[\]\(793119bf0d613bd9b598fb8668922511\_img.jpg\) \*\*Intelligens fűtés-hűtés, fűtési-hűtési megoldások - TECH vezérlők gyártója | TECH vezérlők\*\*](#)
- [!\[\]\(0a4819029e810ca9d2aba79260b63a4d\_img.jpg\) \*\*Sinum - TECH Controllers\*\*](#)
- [!\[\]\(5b78a2fafd05db5e14d20573d68ef9b3\_img.jpg\) \*\*Intelligent heating, smart heating solutions - manufacturer of controllers | TECH Controllers\*\*](#)
- [!\[\]\(25fe2c0d7244c22c84de6bda963b471d\_img.jpg\) \*\*Manuals - TECH Controllers\*\*](#)
- [!\[\]\(d4bd0dc972749ad3ba477eac47688a0b\_img.jpg\) \*\*TECH Controllers - Teplo ve Vašem dome\*\*](#)
- [!\[\]\(5eab3de5002abb449199a3fc43c9f414\_img.jpg\) \*\*Tech Controllers\*\*](#)
- [!\[\]\(3f2384a64e2c0ffe3eae9a8107dd00c7\_img.jpg\) \*\*TECH Controllers - Teplo vo Vašom dome\*\*](#)
- [\*\*User Manual\*\*](#)

**Manuals+, Privacy Policy**

This website is an independent publication and is neither affiliated with nor endorsed by any of the trademark owners. The "Bluetooth®" word mark and logos are registered trademarks owned by Bluetooth SIG, Inc. The "Wi-Fi®" word mark and logos are registered trademarks owned by the Wi-Fi Alliance. Any use of these marks on this website does not imply any affiliation with or endorsement.