

## Sinum EX-S1m Extender



# Sinum EX-S1m Extender User Guide

[Home](#) » [Sinum](#) » Sinum EX-S1m Extender User Guide 

### Contents

- 1 Sinum EX-S1m Extender
- 2 Product Usage Instructions
- 3 Description
- 4 How to register the device in the sinum system
- 5 Technical Data
- 6 Important Notes
- 7 Declaration Of Conformity
- 8 Documents / Resources
  - 8.1 References



**Sinum EX-S1m Extender**



### Specifications:

- **Model:** EX-S1m
- **Manufacturer:** Tech Sterowniki II Sp. z o.o.
- **Connectivity:** WiFi/LAN
- **Mounting:** DIN rail

### Product Usage Instructions

#### Registering the Device in the Sinum System – LAN:

1. Connect the Extender to the same network as the Sinum central device using a LAN wire (RJ45).
2. Enter the address of the Sinum central device in the browser and log in to the device.
3. In the main panel, click on Settings > Devices > System modules > +.
4. Briefly press the registration button 1 on the device.
5. After a successful registration process, an appropriate message will appear on the screen.
6. Name the device and assign it to a specific room if desired.

#### Registering the Device in the Sinum System – WiFi:

1. In the main panel, click on Settings > Devices > System modules > +.
2. Briefly press the registration button 1 on the device.
3. After a successful registration process, an appropriate message will appear on the screen.
4. Name the device and assign it to a specific room if desired.

### FAQ:

- **Q: What is the purpose of the Extender EX-S1m?**

A: The Extender EX-S1m is designed to extend the signal range of peripheral devices to the Sinum central device.

- **Q: How is the Extender powered?**




A: The Extender is powered by a 24V power source.

- **Q: How can I access the full EU compliance declaration and user manual?**

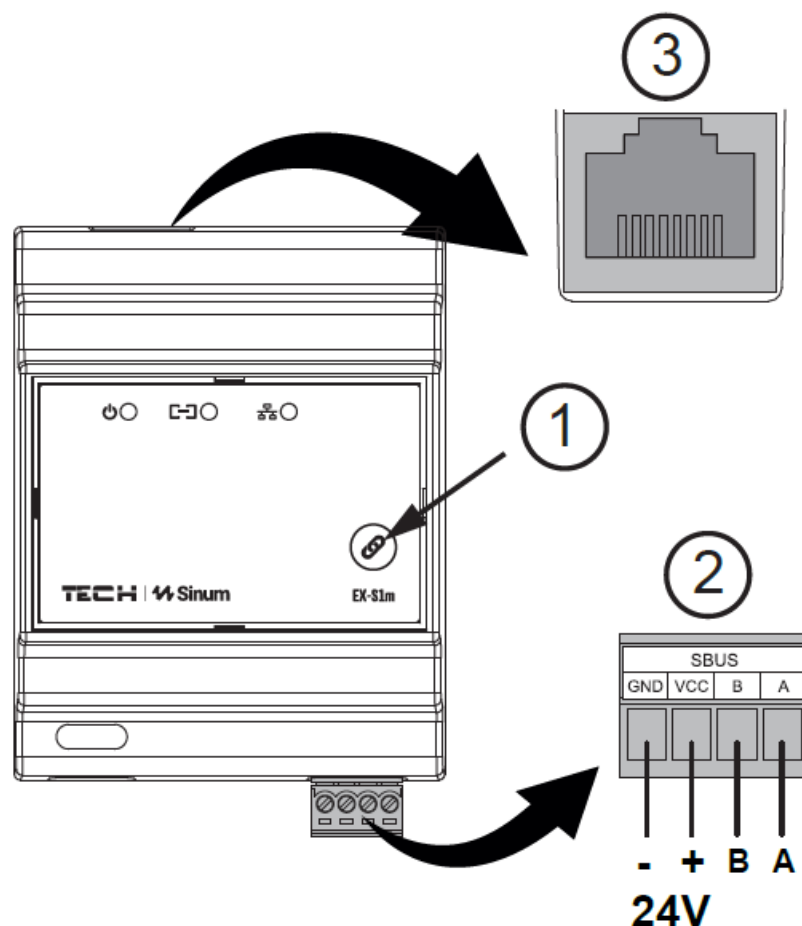
A: The full EU compliance declaration and user manual can be accessed by scanning the QR code or visiting [www.techsterowniki.pl/manuals](http://www.techsterowniki.pl/manuals).

Extender EX-S1m is a device that enables the user to extend the signal range of peripheral devices to the Sinum central device. It connects wired devices to the system Sinum and sends data to the Sinum central device via WiFi/LAN network. It is designed for mounting on a DIN rail.

## Description

-  Power
-  Ethernet connection
-  Ethernet connection activity

1. Registration button
2. SBUS communication connector
3. RJ45 port



## How to register the device in the sinum system

### How to register the device in the sinum system – LAN

Extender should be connected to the same network as the Sinum central device using a LAN wire (RJ45). Then enter the address of the Sinum central device in the browser and log in to the device. In the main panel, click



Settings > Devices > System Modules> . Then briefly press the registration button 1 on the device. After a properly completed registration process, an appropriate message will appear on the screen. Additionally, the user can name the device and assign it to a specific room.

### How to register the device in the sinum system- WiFi

On the extender, press the registration button 1 twice, the AccessPoint mode will be activated (the power LED will flash twice cyclically). The extender broadcasts a Wi-Fi network named: EX\_SX\_XXXXXX that you can connect to. Then, in the device settings window, click Network Wifi selection (if the window does not appear in the browser, enter the extender's IP address: 4.3.2.1), select the network to which the Sinum Central device is connected, and enter the password. If the extender successfully connects to the selected network, the power LED will stop blinking. Log in to the same network enter the IP address of the Sinum Central device in the browser and connect



to it. In the main panel, click Settings > Devices > System Modules> . Then briefly press the registration button 1 on the device. After a properly completed registration process, an appropriate message will appear on the screen. Additionally, the user can name the device and assign it to a specific room.

#### NOTE:

Both devices must be connected to the same WiFi network. The Wifi network has a higher priority than the LAN connection (if the extender was connected in both ways).

## Technical Data

- **Power supply** 24V DC  $\pm 10\%$
- **Max. power consumption** 1W
- **Operation temperature** 5°C ÷ 50°C
- **Wifi:** IEEE 802.11 b/g/n (2.4 GHz)
- **LAN:** IEEE 802.3 100Mb/s

## Important Notes

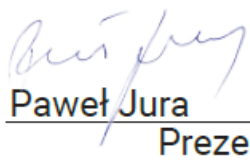
- TECH Controllers is not responsible for any damages resulting from improper use of the system. The range depends on the conditions in which the device is used and the structure and materials used in the object construction. The manufacturer reserves the right to improve devices and update software and related documentation. The graphics are provided for illustration purposes only and may differ slightly from the actual look. The diagrams serve as examples. All changes are updated on an ongoing basis on the manufacturer's website.
- Before using the device for the first time, read the following regulations carefully. Not obeying these instructions may lead to personal injuries or controller damage. The device should be installed by a qualified person. It is not intended to be operated by children. It is a live electrical device. Make sure the device is disconnected from the mains before performing any activities involving the power supply (plugging cables, installing the device, etc.). The device is not water resistant.
- The product may not be disposed of in household waste containers. The user is obliged to transfer their used equipment to a collection point where all electric and electronic components will be recycled.

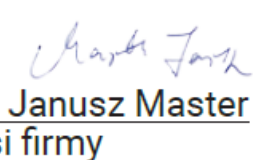


## Declaration Of Conformity

### EU Declaration of conformity

Tech Sterowniki II Sp. z o.o. ul. Biała Droga 34, Wieprz (34-122) Hereby, we declare under our sole responsibility that the extender EX-S1m is compliant with Directive 2014/53/EU.

  
Paweł Jura  
Prezesa firmy

  
Janusz Master  
Prezesa firmy

Wieprz, 01.03.2024

The full text of the EU Declaration of Conformity and the user manual are available after scanning the QR code or at [www.tech-controllers.com/manuals](http://www.tech-controllers.com/manuals).



[www.techsterowniki.pl/manuals](http://www.techsterowniki.pl/manuals)



[www.tech-controllers.com/manuals](http://www.tech-controllers.com/manuals)

## Service

### • PL

- tel: +48 33 875 93 80
- [serwis.sinum@techsterowniki.pl](mailto:serwis.sinum@techsterowniki.pl)

### • EN

- tel: +420 733 180 378
- [www.tech-controllers.cz](http://www.tech-controllers.cz)
- [cs.servis@tech-reg.com](mailto:cs.servis@tech-reg.com)

- **CZ**

- tel: +420 733 180 378
- [www.tech-controllers.cz](http://www.tech-controllers.cz)
- [cs.servis@tech-reg.com](mailto:cs.servis@tech-reg.com).

- **SK**

- tel: +421 918 943 556
- [www.tech-reg.sk](http://www.tech-reg.sk)
- [sk.servis@tech-reg.com](mailto:sk.servis@tech-reg.com).

- **DE**

- tel. +48 33 875 93 80
- [www.tech-controllers.com](http://www.tech-controllers.com)
- [support.sinum@techsterowniki.pl](mailto:support.sinum@techsterowniki.pl)

- **NL**

- tel. +31 341 371 030
- [www.tech-controllers.com](http://www.tech-controllers.com)
- e-mail: [info@eplucon.nl](mailto:info@eplucon.nl).

- **RO**

- tel. +40 760 678 998
- [www.tech-controllers.ro](http://www.tech-controllers.ro)
- [contact@tech-controllers.ro](mailto:contact@tech-controllers.ro).

- **HU**

- tel. +36-300 919 818, +36 30 321 70 88
- [www.tech-controllers.hu](http://www.tech-controllers.hu)
- [szerviz@tech-controllers.com](mailto:szerviz@tech-controllers.com)

- **ES**

- tel. +48 33 875 93 80
- [www.tech-controllers.com](http://www.tech-controllers.com)
- [support.sinum@techsterowniki.pl](mailto:support.sinum@techsterowniki.pl)

- **UA**

- tel. +38 096 875 93 80
- [www.tech-controllers.com](http://www.tech-controllers.com)
- [servis.ua@tech-controllers.com](mailto:servis.ua@tech-controllers.com)

- **RU**

- +375 3333 000 38 (WhatsApp, Viber, Telegram)
- [service.eac@tech-reg.com](mailto:service.eac@tech-reg.com) (RU)

[www.sinum.eu](http://www.sinum.eu).

Made in Poland.

**Documents / Resources**



## [Sinum EX-S1m Extender](#) [pdf] User Guide EX-S1m Extender, EX-S1m, Extender

### References

- [🌐 controllers.com](#)
- [📁 reg.com](#)
- [📄 Intelligens fűtés-hűtés, fűtési-hűtési megoldások - TECH vezérlők gyártója | TECH vezérlők](#)
- [🌐 Sinum - TECH Controllers](#)
- [📄 Intelligent heating, smart heating solutions - manufacturer of controllers | TECH Controllers](#)
- [📄 Manuals - TECH Controllers](#)
- [📄 TECH Controllers - Teplo ve Vašem domě](#)
- [🌐 Tech Controllers](#)
- [📄 TECH Controllers - Teplo vo Vašom dome](#)
- [📄 User Manual](#)

#### [Manuals+](#). [Privacy Policy](#)

This website is an independent publication and is neither affiliated with nor endorsed by any of the trademark owners. The "Bluetooth®" word mark and logos are registered trademarks owned by Bluetooth SIG, Inc. The "Wi-Fi®" word mark and logos are registered trademarks owned by the Wi-Fi Alliance. Any use of these marks on this website does not imply any affiliation with or endorsement.