



## singing machine SMC2035 Sing Cast Max Instruction Manual

[Home](#) » [Singing Machine](#) » singing machine SMC2035 Sing Cast Max Instruction Manual 

singing machine SMC2035 Sing Cast Max Instruction Manual



## Contents

- [1 Important Safety Information](#)
- [2 Included](#)
- [3 Assembly](#)
- [4 Location of Controls](#)
- [5 Connections](#)
- [6 Operation](#)
- [7 Troubleshooting Guide](#)
- [8 Need Help Casting? Start here!](#)
- [9 Specifications](#)
- [10 Documents / Resources](#)
  - [10.1 References](#)
- [11 Related Posts](#)

## Important Safety Information

1. . Read these Instructions.
2. Keep these Instructions.
3. Heed all Warnings.
4. Follow all Instructions.
5. Do not use this apparatus near water.
6. Clean only with a dry cloth.
7. Do not block any of the ventilation openings. Install in accordance with the Manufacturer's instructions.
8. Do not install near any heat sources such as radiators, heat registers, stoves, or other apparatus (including amplifiers) that produce heat.
9. Do not defeat the safety purpose of the polarized or grounding type plug. A polarized plug as two blades with one wider than the other. A grounding type plug has two blades and a third grounding prong. The wide blade or the third prong are provided for your safety. When the provided plug does not fit into your outlet, consult an electrician for replacement of the obsolete outlet.
10. Protect the power cord from being walked on or pinched particularly at plugs, convenience receptacles, and the point where they exit from the apparatus.
11. Only use attachments/accessories specified by the manufacturer.
12. Use only with a cart, stand, tripod, bracket, or table specified by the manufacturer, or sold with the apparatus. When a cart is used, use caution when moving the cart/ apparatus combination to avoid injury from tip-over.
13. Unplug this apparatus during lightning storms or when unused for long periods of time.

PORTABLE CART WARNING  
(symbol provided by RETAC)



14. Refer all servicing to qualified service personnel. Servicing is required when the apparatus as been damaged in any way, such as power-supply cord or plug is damaged, liquid has been spilled or objects have fallen into the apparatus, the apparatus has been exposed to rain or moisture, does not operate normally, or has been dropped.
15. **WARNING:** To reduce the risk of fire or electric shock, do not expose this apparatus to rain or moisture. Do not

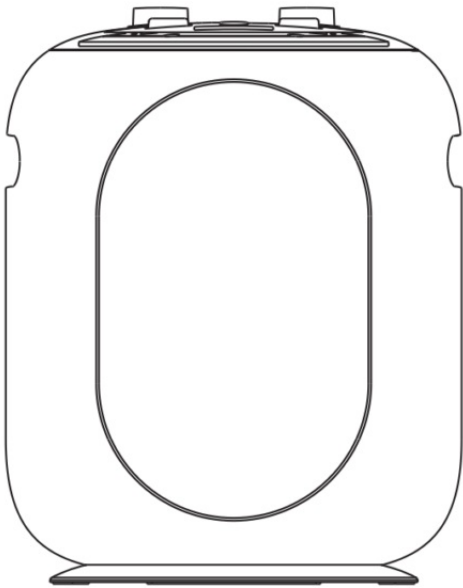
place objects filled with water, such as a vase, on the apparatus.

16. The AC mains plug is used as the power disconnect device and it should remain readily accessible and operable during intended use. In order to completely disconnect the apparatus from power, the mains plug should be completely removed from the AC outlet socket.
17. CAUTION: To reduce the risk of fire or explosion, do not expose batteries to excessive heat such as sunshine, fire or other heat sources.

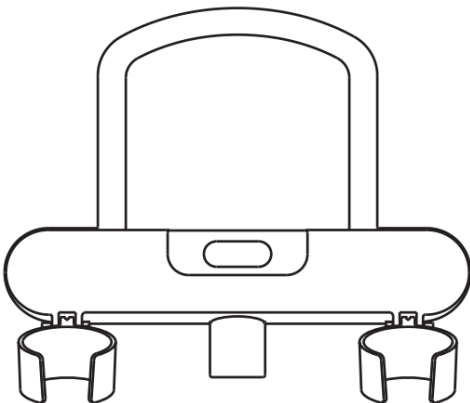
## Included

Please make sure that the following items are included.

- **Main Unit**



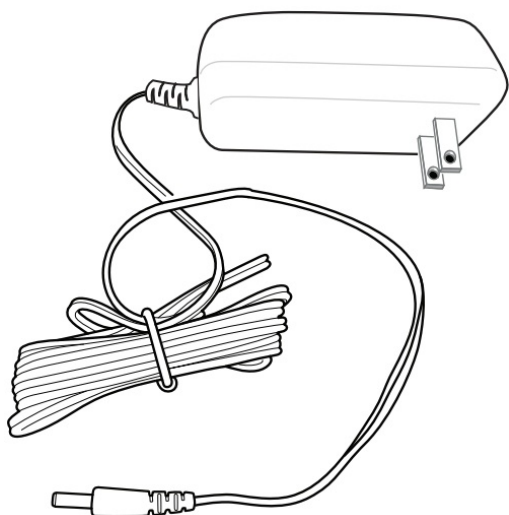
- **Cradle with mic holders (Detachable)**



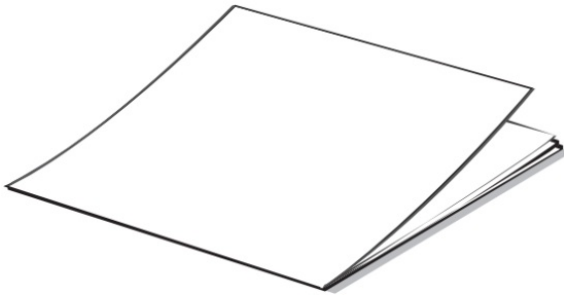
- **Extendable Mic stand**



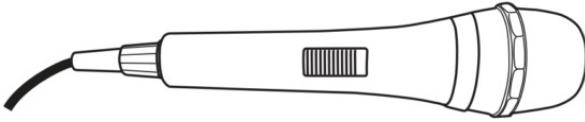
- **AC Adapter**



- **Manual**

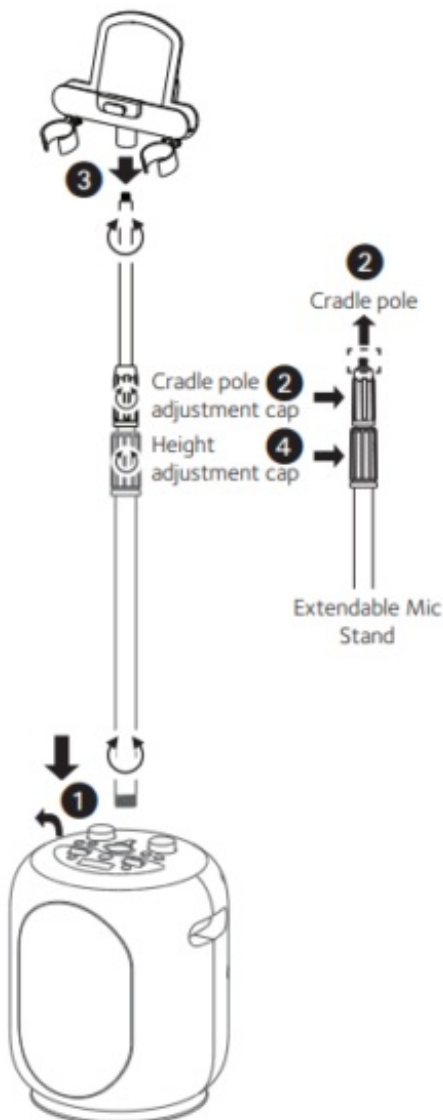


- **Wired Microphone**

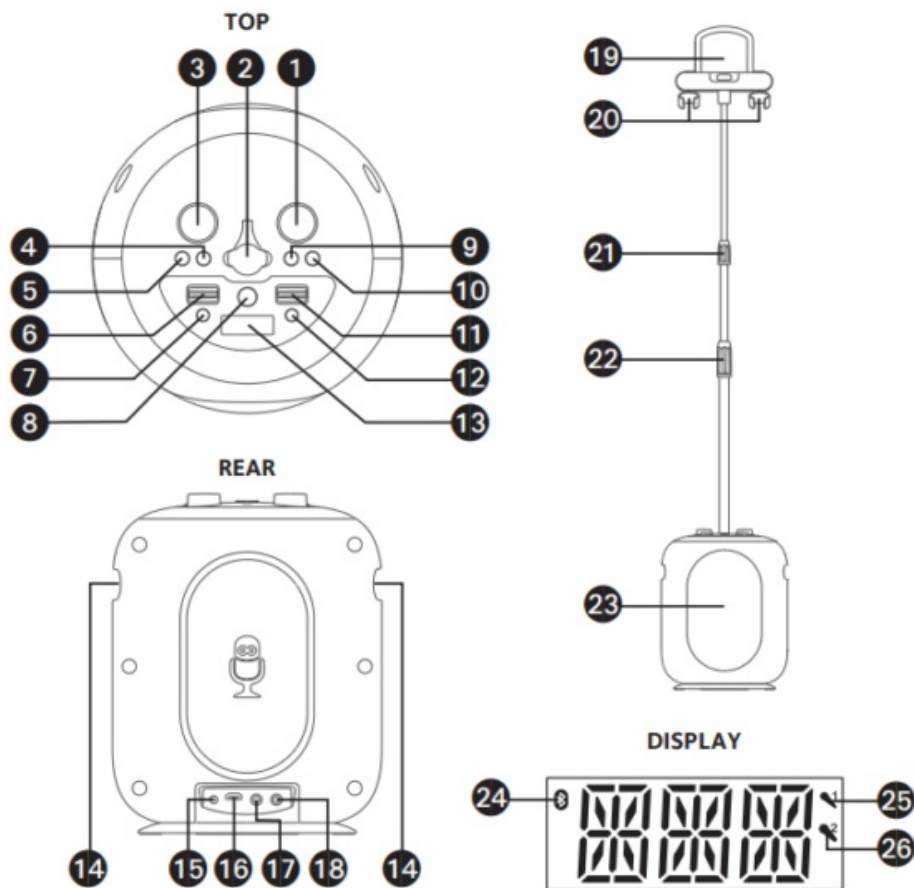


## Assembly

1. Lift the rubber cover on the top of the Main unit. Insert the Mic stand into the Main unit and tighten it.
2. Untighten cradle pole cap, pull up on the cradle pole. Retighten cap to keep in place.
3. Insert then rotate to tighten the Cradle with Mic holders on the mic stand.
4. Untighten height adjustment cap to adjust to a suitable height. Retighten cap to hold in place.



## Location of Controls



1. NAVIGATION/ENTER Control
2. Rubber Cover
3. MASTER VOLUME Control
4. PLAYBACK Button
5. RECORD Button
6. VOICE EFFECTS Control



7. Bluetooth Button



8. (ON/STANDBY/ LIGHTS button)

9. VOCALS OFF Button



10. BACK Button

11. MIC VOLUME Control



12. HOME Button

13. Display

14. Handles

15. DC In Jack

16. HDMI Jack

17. Mic 1 Jack

18. Mic 2 Jack

19. Cradle

20. Mic Holders

- 21. Cradle pole adjustment cap
- 22. Height adjustment cap
- 23. Speaker
- 24. Bluetooth indicator
- 25. Mic 1 indicator
- 26. Mic 2 indicator

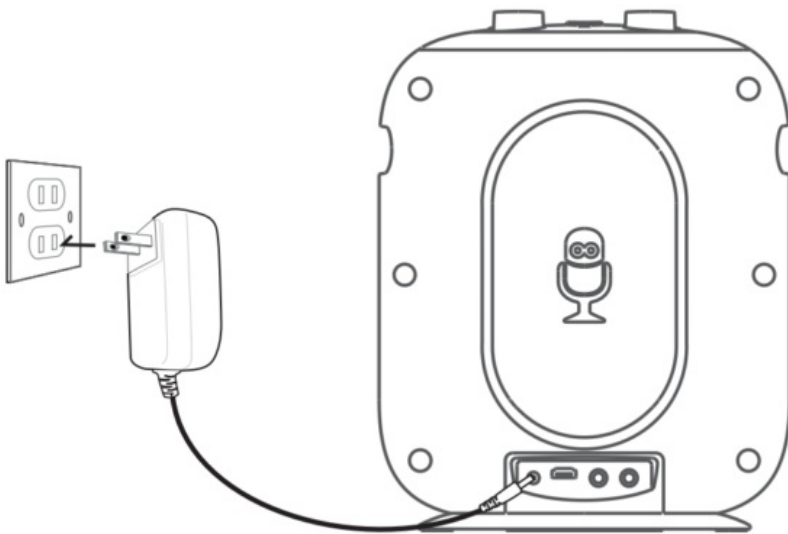
## Connections

### Connecting to AC Power

- Insert the AC power cord into a conveniently located AC outlet having 120V AC, 60Hz.

#### Notes:

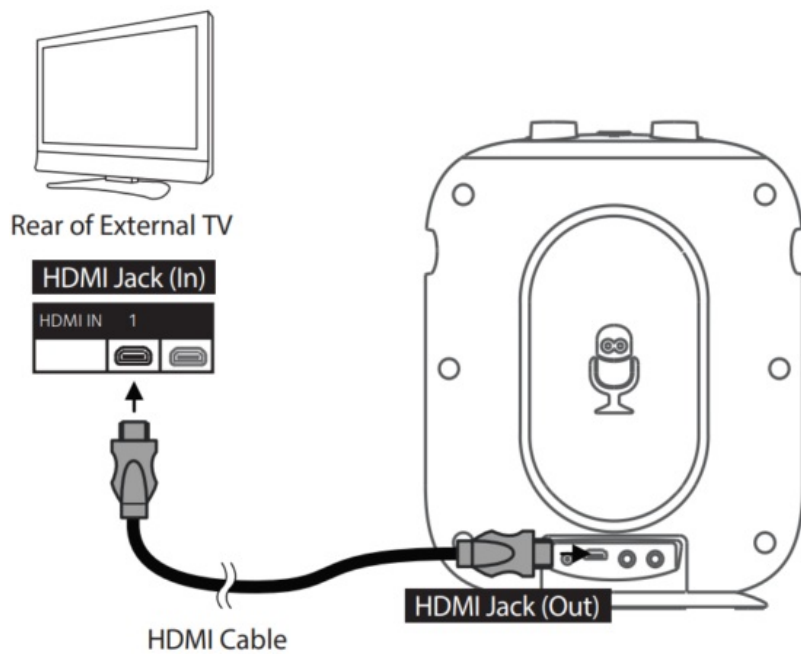
- Make all connections prior to plugging the AC adaptor into a power outlet



### Connecting the Unit to a TV

To output the casting video and casting audio to your TV, perform the following steps:

Plug the HDMI cable (not included) into the HDMI Jack on the back of the unit. Plug the other end of the HDMI cable into the HDMI input on your TV.



**Notes:**

- This unit can be used with or without a TV, but it is highly recommended to use a TV in order to utilize all the features.
- Also refer to the TV's User Guide.
- Bluetooth audio and mic input cannot be output to your TV.

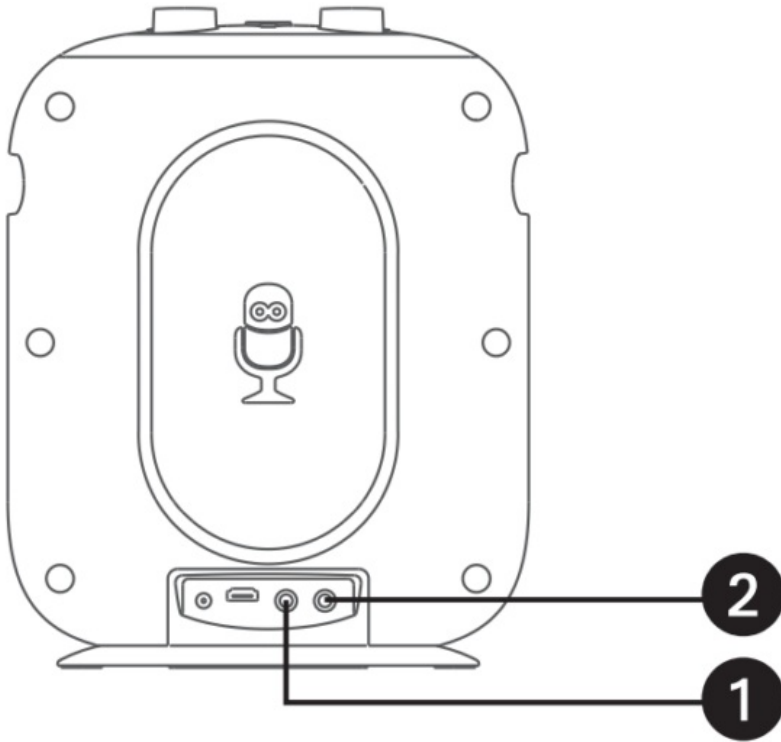
**Connecting the Microphone(s)**

**Microphones:**

Connect a microphone into Mic jack

1. as well as Mic jack
2. (when desired).



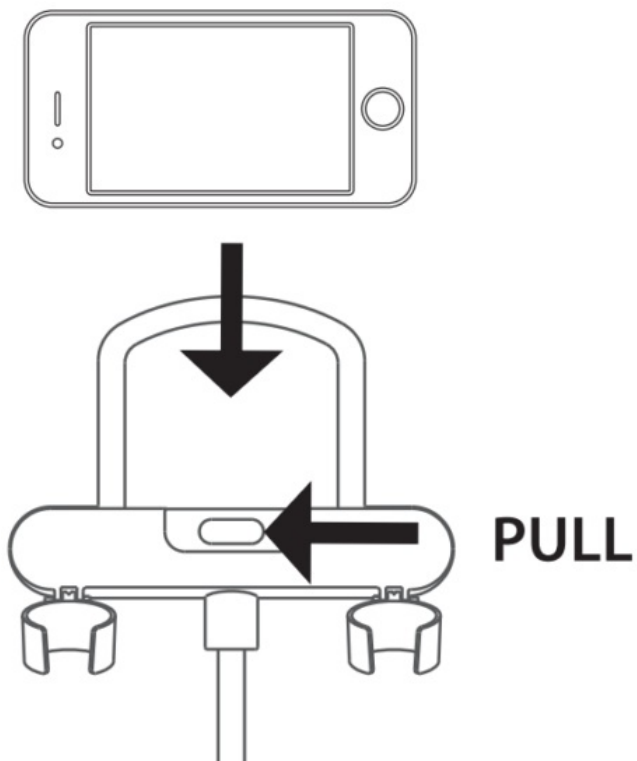


**Note:** Do not drop or tap the Mic as damage to the Mic or speakers may occur. Do not twirl the microphone cord as it will cause damage to the encased wiring.


### Lights Mode

There are 5 built-in light modes. Repeatedly press  button to switch between lighting effects.

### Cradle

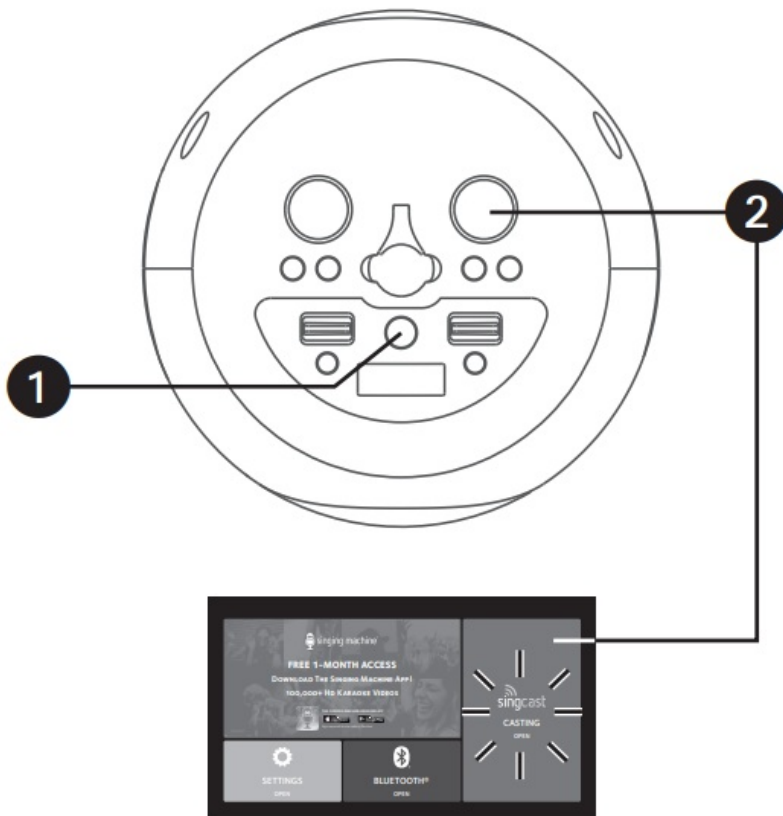


### Connect to WiFi

1. Connect the unit as described previously and ensure to connect it to a TV. Press the  (ON/**STANDBY/LIGHTS**) button to turn the unit on.

## 2. USE YOUR MOBILE DEVICE TO CONNECT THIS UNIT

Use the **NAV/ENTER** control to select the **SINGCAST** icon on your TV screen. "CAS" will display on the screen. If this unit has not been connected to your WiFi network, a step 1 QR code will pop up on screen. Use your mobile device to scan the QR code allowing it a moment to load. Once your mobile device connects to the unit successfully, the step 2 QR code will pop up on screen.



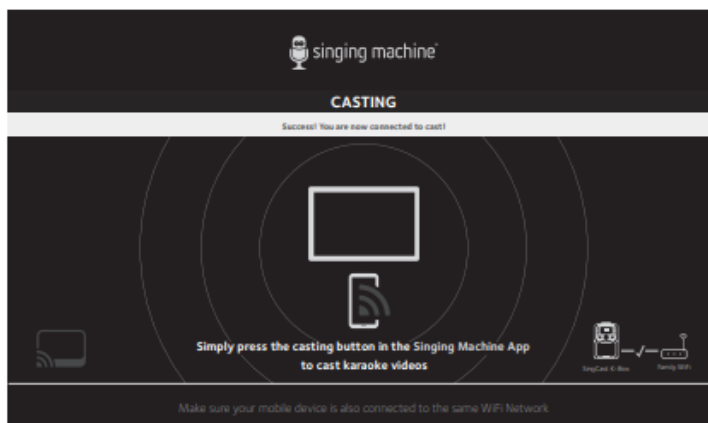
**NOTE:** Rotate the **NAV/ENTER** control to navigate, press it to enter.

3. **CONNECT THIS UNIT TO YOUR WIFI NETWORK** Use your mobile device to scan the step 2 QR code and allow it to load. The WiFi list will pop up on your mobile device. Search for and select your home WiFi and input your WiFi password to complete the login process. If the unit does NOT connect to your home WiFi successfully, check your password and WiFi frequency and repeat above steps.



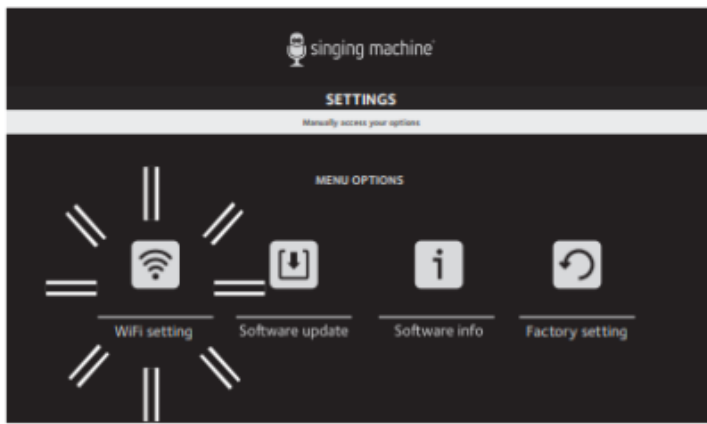
#### NOTES:


- **This unit supports 2.4GHz WiFi only.**
  - Make sure the WiFi network of the mobile device and unit are using the same network.
  - WPA3 security settings can cause connection issues. If you have WPA3 security, we recommend lowering to WPA2 or lower. Or contact us for further help.
4. When the unit connects to your WiFi successfully, “connected” will display on-screen. You can download the Singing Machine Karaoke App to listen to your favorite karaoke music and project the HD karaoke video on

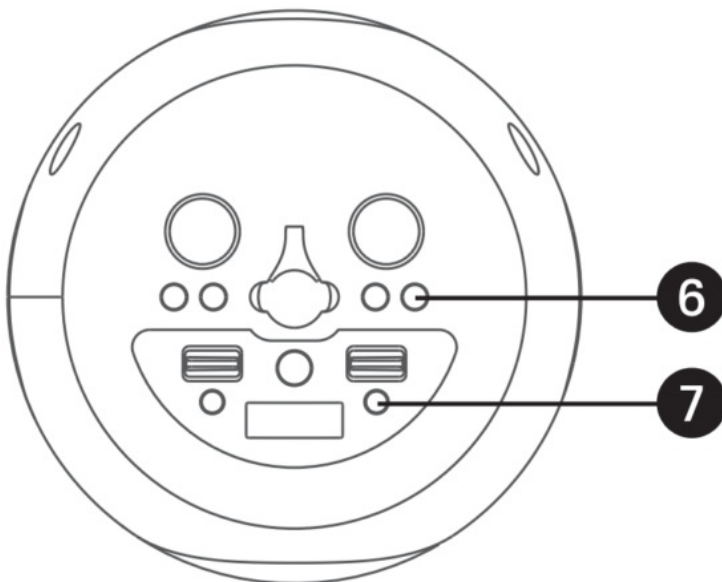



your TV.

5. The unit automatically searches and pairs to a previously paired WiFi network. If you want to connect to another WiFi network, you can go to the main menu and select **SETTINGS>WiFi setting>DISCONNECT** to disconnect from the WiFi network in order to connect to another WiFi network.




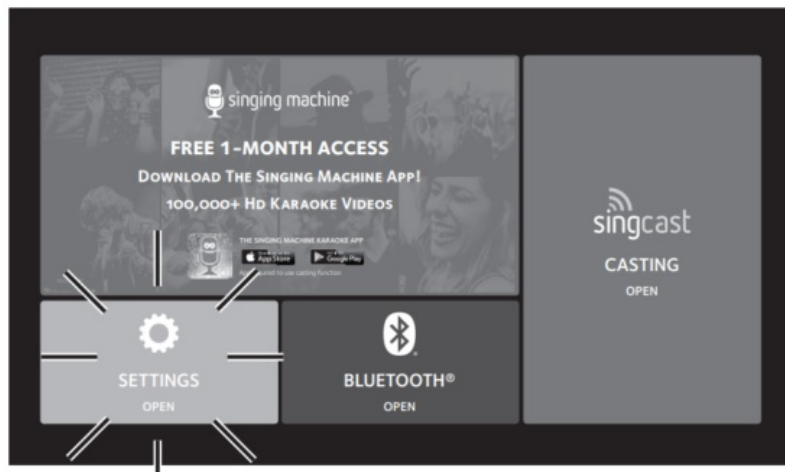
6. Press the  **BACK** button to go back to the previous screen.



7. Press the  **HOME** button to go to the main menu.

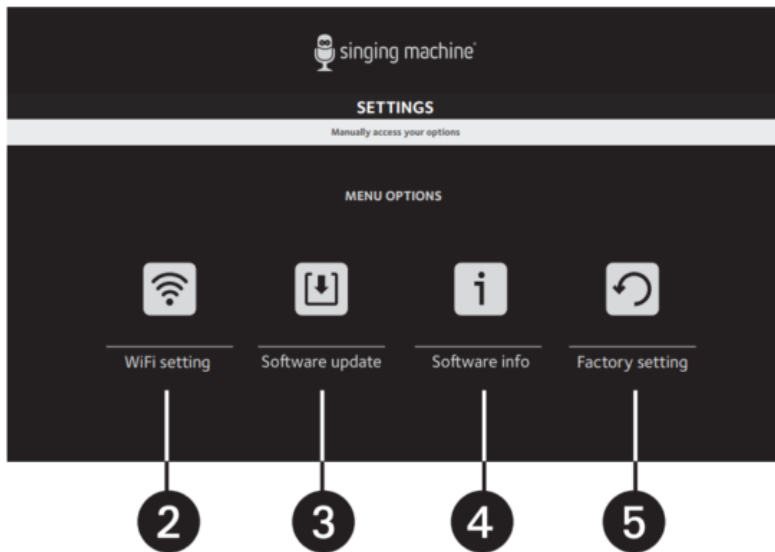
## Settings

1. Press the  **HOME** button to go to the main menu. Using the **NAV/ENTER** control select the **SETTINGS**



icon; “SEt” will appear on-screen.


2. Select **WiFi setting** to connect or disconnect from the WiFi network and check the WiFi signal level.

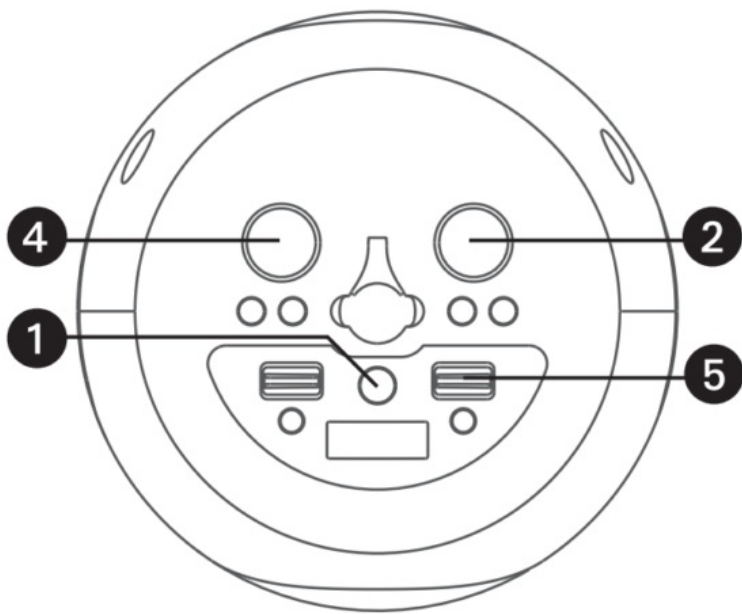


3. Select **Software update** to update the software of the unit.
4. Select Software info to check the latest software version of this unit.
5. Select Factory setting to delete all data stored in the unit.

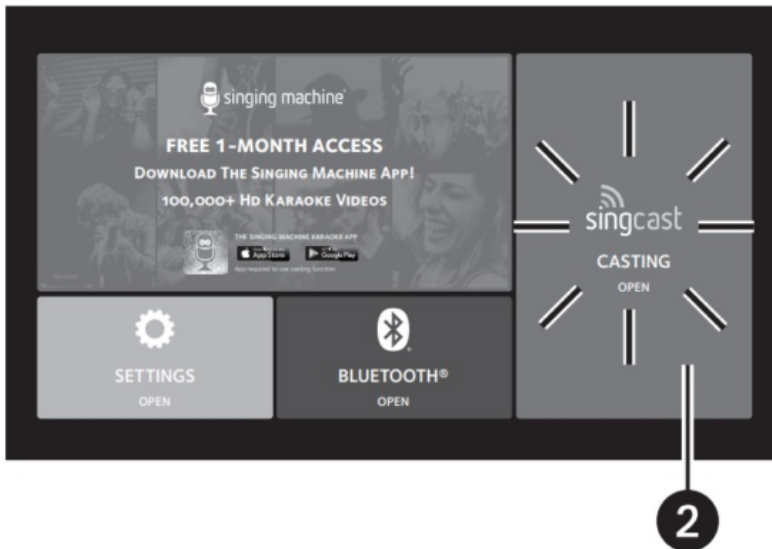
## Operation

### Using SingCast Casting

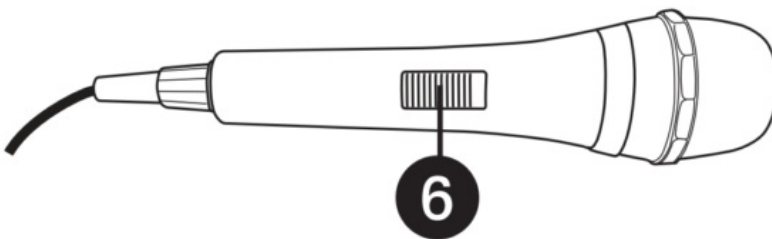
1. Connect the unit as described previously and ensure to connect it to a TV. Press the  (ON/**STANDBY/LIGHTS**) button to power on the unit.
2. Use the **NAV/ENTER** control to select the SINGCAST icon on your TV screen; “CAS” appears on the display.
3. Download the Singing Machine Karaoke App to choose from thousands of HD karaoke videos, project your favorite karaoke videos from your mobile device to your TV (make sure your mobile device and the unit are connected to the same WiFi network).



4. Adjust the volume to a comfortable level using the **MASTER VOLUME** control.
5. Adjust the **MIC VOLUME** control as desired. Increasing this control will increase the volume of both microphones.

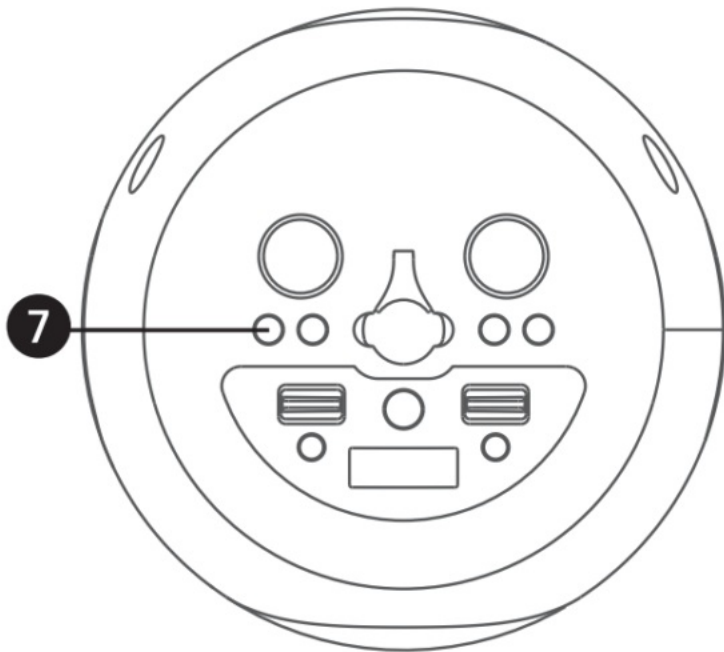


6. Connect the microphone and slide the **ON/OFF** switch on the microphone to the ON position.



## 7. RECORD YOUR SINGING PERFORMANCE

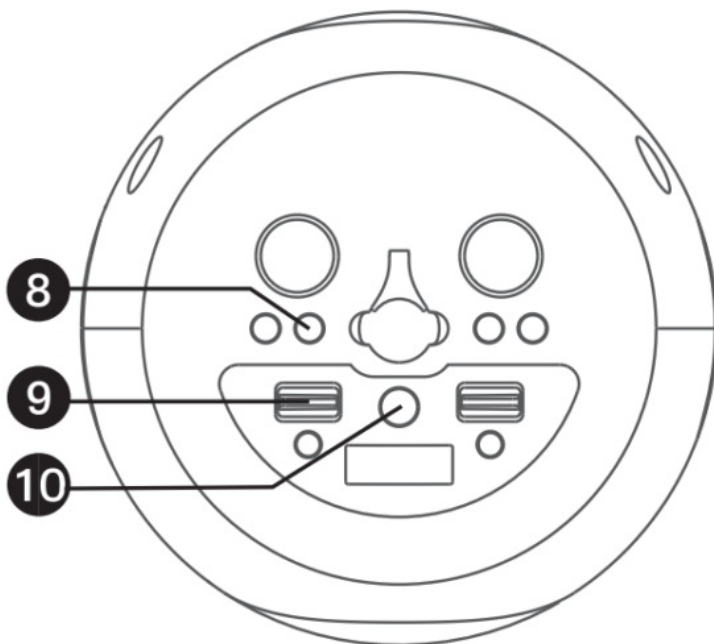
During music playback, press the **RECORD** button to record your singing and the music, "REC" will appear solid on the display. Press the **RECORD** button again to stop recording, "REC" will turn off. This unit is able to record for 5 minutes. It will also stop recording automatically after 5 minutes and "REC" will turn off



**NOTE:** Please note that new recordings will cause previous recordings to be deleted.

#### 8. **PLAYBACK YOUR SINGING PERFORMANCE**

To playback your singing performance, you can press the **PLAYBACK** button. "PB" will appear on the display and light solid. Press again to stop. Press and hold the **PLAYBACK** button to delete the recorded track. A sound will be heard confirming the deletion of the track.

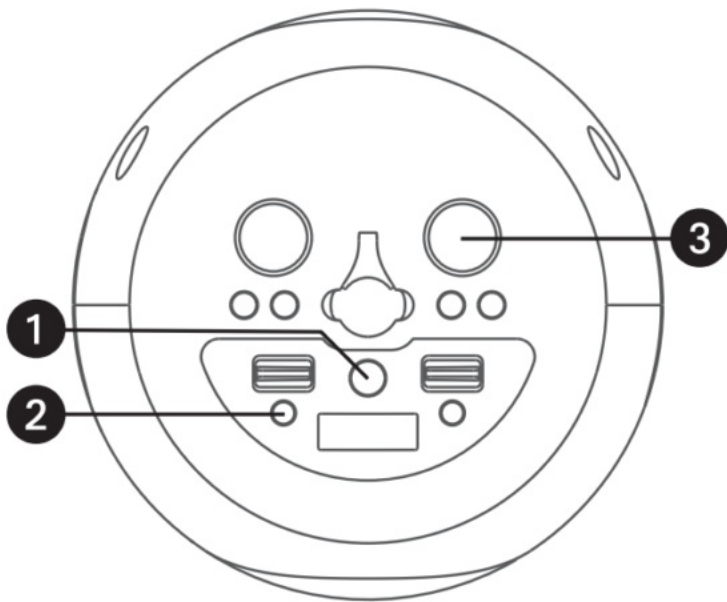



9. Toggle the **VOICE EFFECTS** control to select a voice effect.

10. Press and hold the  button to turn off the unit.

#### **Using a Bluetooth Device**

1. Connect the unit as described previously. Press the  (**ON/ STANDBY/LIGHTS**) button to turn the unit on.




2. **WAYS TO ENTER BLUETOOTH MODE** Press the  button; “bt” will start to flash on the display.
3. Use the NAV/ENTER control to select BLUETOOTH OPEN in the main menu; the unit should be connected to a TV.

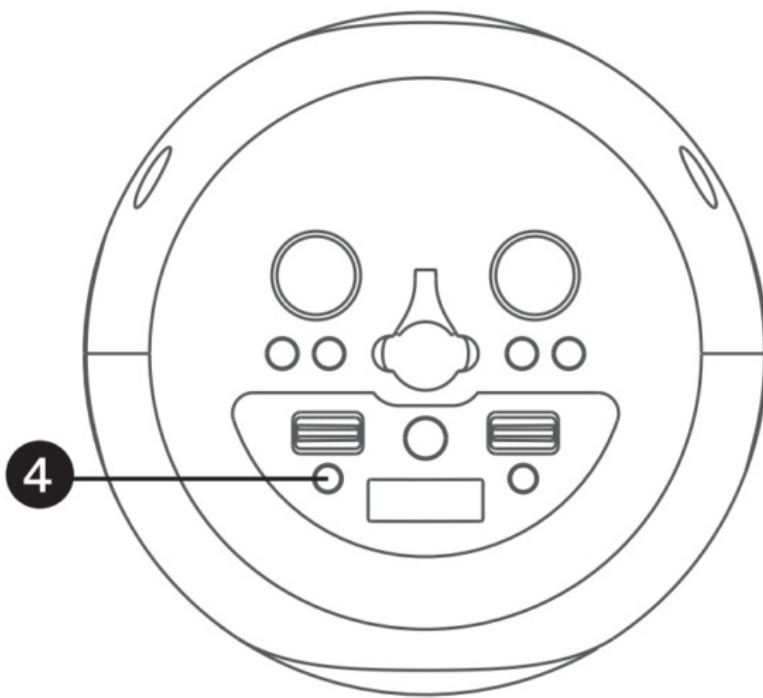


4. The unit automatically searches and pairs a previously paired Bluetooth device (if previously paired). If no previously paired devices are present and you cannot find this unit on your bluetooth compatible device's search list.

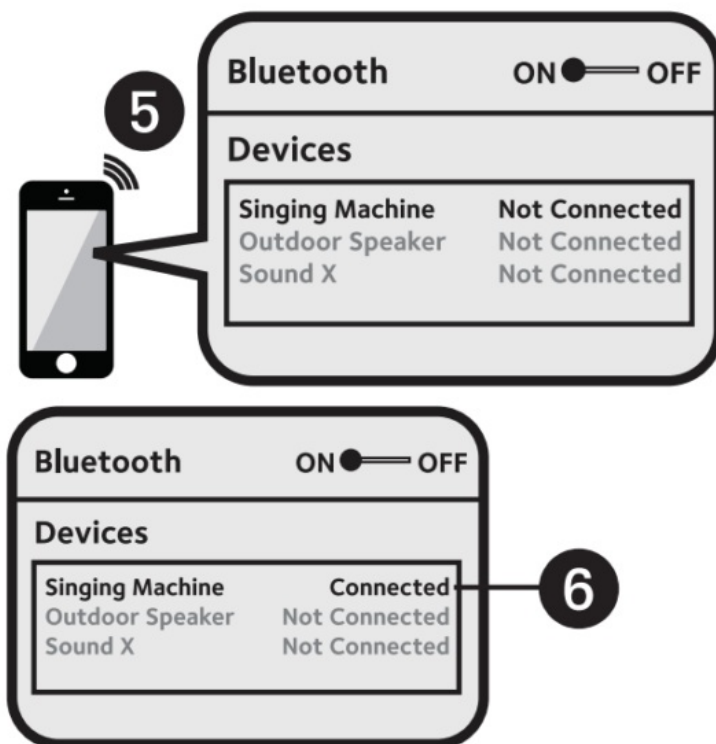
Press and hold the  button; the “PR” and bluetooth indicator will start flashing for 60 seconds.

**NOTE:** You can also press and hold the  button to disconnect any paired device in order to pair another device.

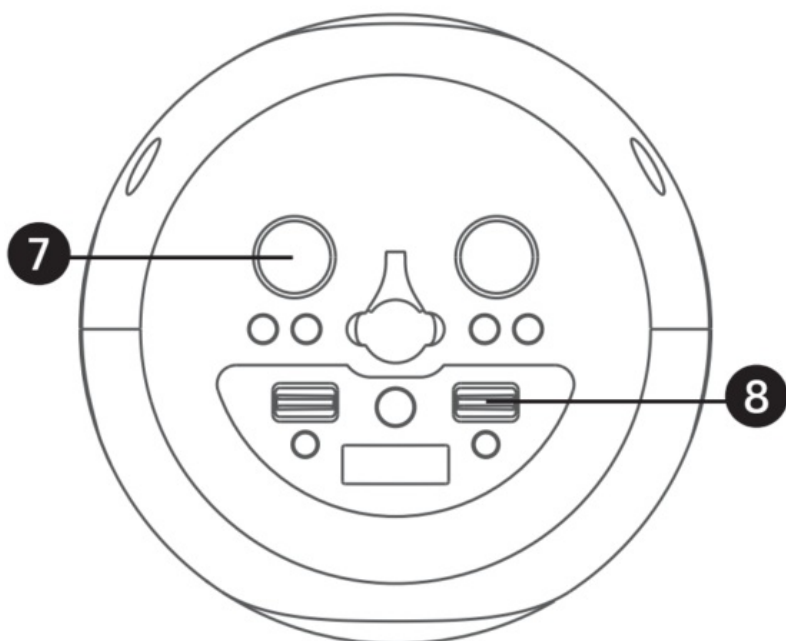




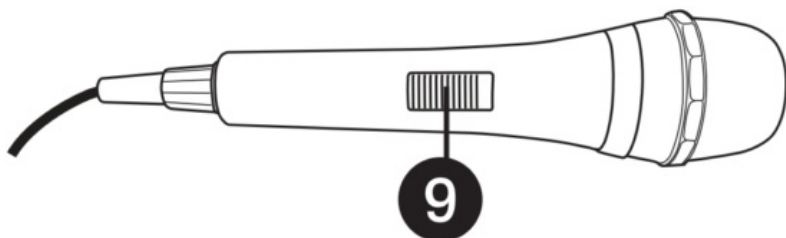
5. Turn on your device's Bluetooth option in settings to search for a discoverable device with a Bluetooth signal. Select "SINGING MACHINE" from the device results on the Bluetooth menu.  
**NOTE:** Also refer to the user manual of your Bluetooth device for detailed instructions.
6. "bt" and bluetooth indicator will light solid.





7. Adjust the volume to a comfortable level using the **MASTER VOLUME** control on this unit as well as the volume on your Bluetooth device.  
**NOTE:** Bluetooth music and your singing performance are only played on the unit.
8. Adjust the **MIC VOLUME** control as desired. Increasing this control will increase the volume of both microphones.

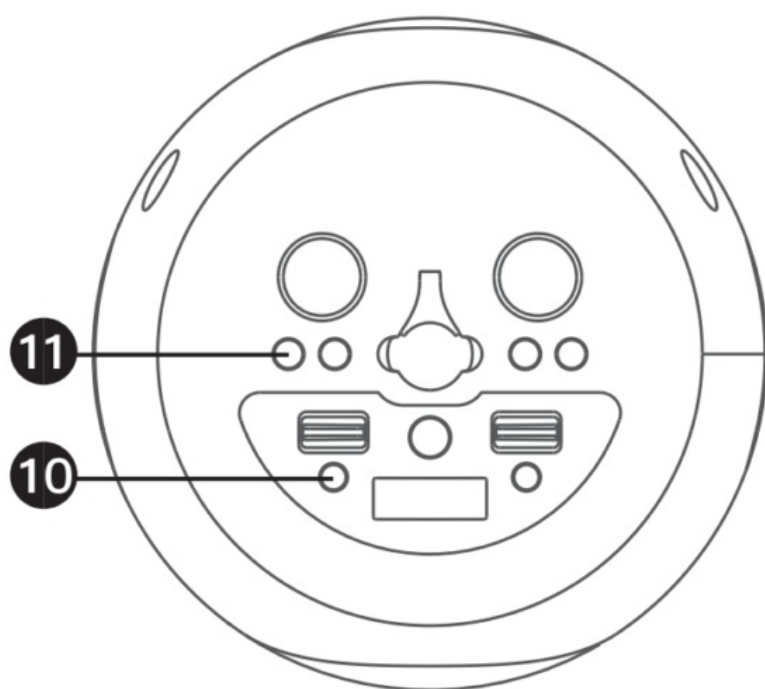


9. Connect the microphone and slide the **ON/OFF** switch on the microphone to the ON position.



10. To control your Bluetooth device from this unit, press  the button to start playback (music app must be open). Press  during playback to pause the song.

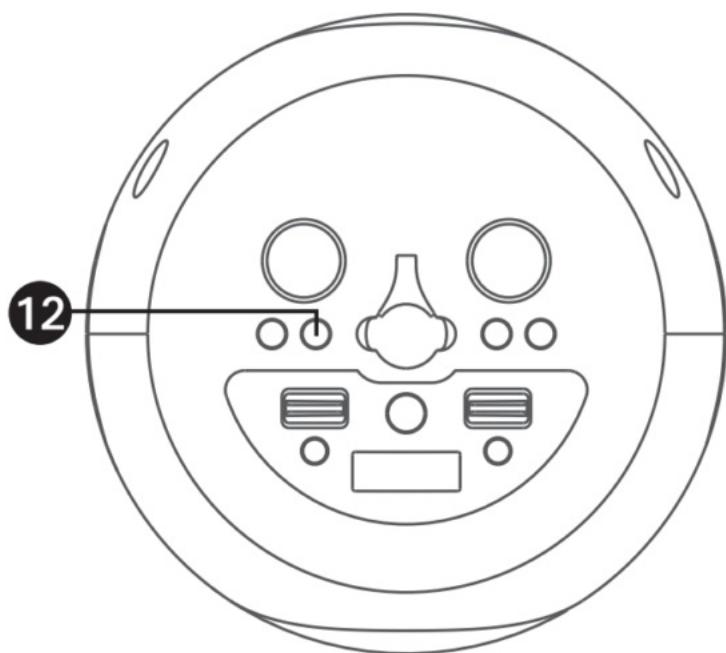
11. **RECORD YOUR SINGING PERFORMANCE** During music playback, press the **RECORD** button to record your singing and the music, "REC" will appear solid on the display. Press the **RECORD** button again to stop recording, "REC" will turn off. It will also stop recording automatically after 5 minutes and "REC" will turn off.



**NOTE:** Please note that new recordings will cause previous recordings to be deleted.

## 12. **PLAYBACK YOUR SINGING PERFORMANCE**

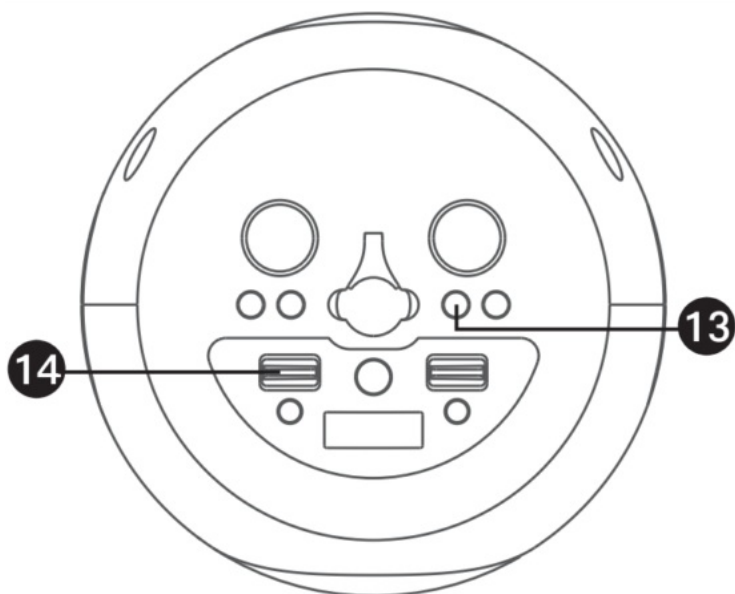
To playback your singing performance, you can press the **PLAYBACK** button. "PB" will appear solid on the display. Press again to stop. Press and hold the **PLAYBACK** button to delete the recorded track.



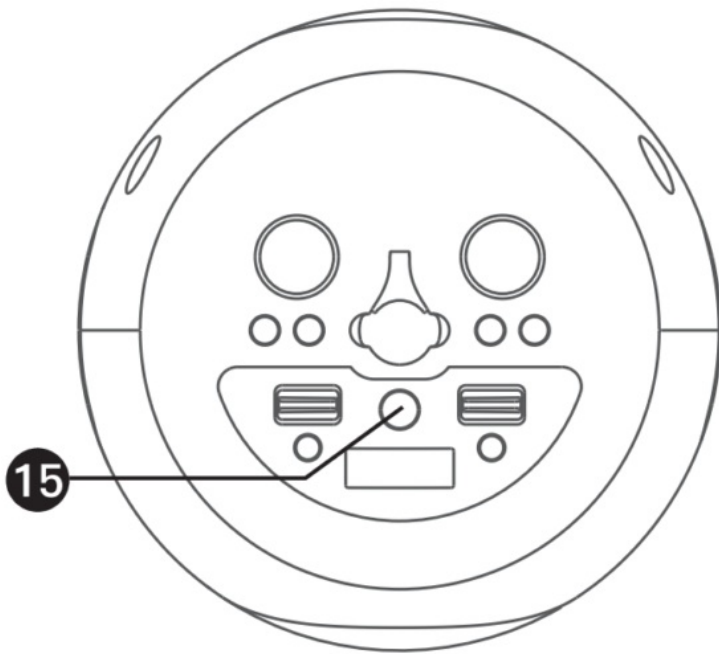
13. To sing without the lead singer on the recording, press the **VOCALS OFF** button. To resume the lead singer, press again.

**NOTE:** Lead vocal removal might work better on some songs than others.

14. Toggle the **VOICE EFFECTS** control to select the voice effects.



15. Press and hold the  button to turn off the unit.



## Troubleshooting Guide

Should this unit exhibit a problem, check the following before seeking service:

### No Power

- Power is not on; press the / button to turn power on.
- Confirm that the AC adapter is connected securely to the rear of the unit.
- Connect the unit to a different outlet.
- The normal function of the product may be disturbed by strong Electro-Magnetic Interference. If so, simply restart the product to resume normal operation by following the instruction manual. In case the function could not resume, please use the product in another location.

### No Sound – General

- Master Volume is set to minimum; raise volume.

### No Sound – If connected to a TV


- Correct mode (SingCast) was not selected on the unit.
- Bluetooth music audio and singing performance cannot output to the TV.
- Volume on the TV is muted or too low.
- Correct source (usually HDMI) was not selected on the TV's menu.

### No sound from the microphone

- Make sure the microphone is firmly connected to the MIC 1 or MIC 2 jack.
- Make sure the mic's **ON/OFF** switch is set to the ON position.
- Make sure the **MIC VOLUME** control is not set too low.
- **MASTER VOLUME** is set to minimum; raise volume.
- Microphone input cannot output to the TV.

### The Bluetooth device cannot be paired or connected with the unit

- Ensure any other Bluetooth devices are turned off to avoid accidental pairing.
- You have not activated the Bluetooth function of your device; see page E12 or refer to the Bluetooth device user's manual.

- The system is not in pairing mode; press and hold the  button to restart pairing.

**The Music is not available on the unit after successfully connecting to Bluetooth**

- Ensure your Bluetooth device can support the A2DP Bluetooth profile.
- The volume on the external Bluetooth device is set too low or muted; raise as desired.

**Failed to connect to the WiFi network**

- The unit is not within the WiFi signal range.
- Check that your WiFi frequency is 2.4GHz.
- Ensure you have entered the correct password.
- Check that the mobile device and unit are using the same WiFi network.
- WPA3 security settings can cause connection issues. If you have WPA3 security, we recommend lowering to WPA2 or lower. Or contact us for further help.

## **Need Help Casting? Start here!**

### **Scanning QR code fail**

- We recommend for you to scan the QR Code once more. If you cannot scan it successfully, you may need to try a specific QR code scanning APP to help.
- Alternatively, you can go into “SETTINGS menu/WiFi setting” to connect the SingCast unit to your WiFi network directly.

### **No Internet connection**

- Ensure the unit is in SingCast mode.
- Ensure the input WiFi password is correct.
- Ensure the SingCast unit is not too far from your router (recommended maximum 10 meters). If the WiFi signal level is weak, we recommend that you relocate the SingCast unit closer to the router.
- This unit can only connect to 2.4GHz frequency WiFi.
- This unit is only compatible with WIFI security WPA2 or lower. Please check out below compatible WiFi security list. WPA, WPA-PSK, WPA2, WPA2-PSK, WEP 64bit & 128bit, IEEE 802.11x and IEEE 802.11i.
- If your WiFi security is set to WPA3 or above on your router, you will need to set it to WPA2 or lower.
- Depending on the brand of your router, if you still cannot connect to the router with WPA2 or lower security standard, you are recommended to factory reset your router. \*Make sure you have written down your existing customized SSID name and password. This will help in reconnecting your previously connected devices and revert to your previous WiFi security settings.
- If the Singing Machines unit's WiFi is connected to the router successfully. But you still cannot connect to the internet. You might need to check for any internet connection problems on your router. Or check out the router's settings to verify if the unit is blocked from going online. You are highly recommended to refer your router's instruction manual.
- To ensure the unit's WiFi function works fine, you can connect your unit's WiFi to your mobile device's hotspot with data service to verify. Make sure you have a second mobile device providing hotspot to cast the video.

**Cannot find the SingCast unit on your Karaoke app casting list / No Casting video to TV**

- Ensure both the SingCast unit and your mobile device are connected to the same WiFi network.
- If SingCast does not appear as a casting option, check advanced security settings to enable DLNA.
- If you are connecting a router with Mesh function, you need to make sure “Access Intranet” function is enabled.

## Specifications

### AUDIO

- Output Power: 35 Watts (RMS)

### BLUETOOTH

- Bluetooth Version: V5.0
- Working Distance: Up to 30 feet/10 meters measured in open space

### WIFI

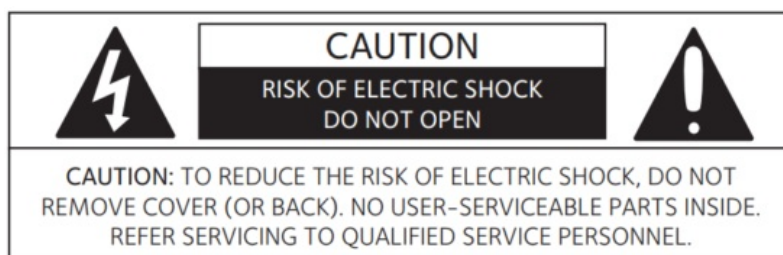
- Wifi frequency: 2.4GHz

### GENERAL

- Power :100-240V, 50/60Hz
- Output: DC16.1V 3.5A Positive Center
- Dimensions:
- Main Unit only : 10.3 x 10.3 x 12.6 inches (26.2 x 26.2 x 32cm)
- Main unit + Mic stand : Adjustable height max. 64.2 H inches/ 163cm (optional)
- Weight:
- Main Unit only : 4.6 Lbs (2.1 kgs)
- Main unit + Mic stand : 5.4 Lbs (2.5 kgs)
- Microphone :-74 dB 600 Ohms impedance with 6.3 mm Dynamic Microphone.

Specifications are subject to change without notice.

### Warnings





**DANGEROUS VOLTAGE:** The lightning flash with arrowhead symbol within an equilateral triangle is intended to alert the user to the presence of uninsulated dangerous voltage within the product's enclosure that may be of sufficient magnitude to constitute a risk of electric shock to persons.



**ATTENTION:** The exclamation point within an equilateral triangle is intended to alert the user to the presence of important operating and maintenance (servicing) instructions in the literature accompanying this product.

**DRIPPING WARNING:** This product shall not be exposed to dripping or splashing, and no objects filled with liquids, such as vases, shall be placed on the product.

**VENTILATION WARNING:** The normal ventilation of the product shall not be impeded for intended use

**CAUTION:** TO PREVENT ELECTRIC SHOCK, MATCH WIDE BLADE OF PLUG TO WIDE SLOT AND FULLY INSERT.

**WARNING:** TO PREVENT FIRE OR SHOCK HAZARD, DO NOT EXPOSE THIS UNIT TO RAIN OR MOISTURE.

**FCC WARNING:** This equipment may generate or use radio frequency energy. Changes or modifications to this equipment may cause harmful interference unless the modifications are expressly approved in the instruction manual. The user could lose the authority to operate this equipment if an unauthorized change or modification is made

This device complies with part 15 of the FCC Rules. Operation is subject to the following two conditions: (1) This device may not cause harmful interference, and (2) this device must accept any interference received, including interference that may cause undesired operation.

**NOTE:** This equipment has been tested and found to comply with the limits for a Class B digital device, pursuant to part 15 of the FCC Rules. These limits are designed to provide reasonable protection against harmful interference in a residential installation. This equipment generates, uses and can radiate radio frequency energy and, if not installed and used in accordance with the instructions, may cause harmful interference to radio communications.

However, there is no guarantee that interference will not occur in a particular installation. If this equipment does cause harmful interference to radio or television reception, which can be determined by turning the equipment off and on, the user is encouraged to try to correct the interference by one or more of the following measures:

- Reorient or relocate the receiving antenna.
- Increase the separation between the equipment and receiver.
- Connect the equipment into an outlet on a circuit different from that to which the receiver is connected.
- Consult the dealer or an experienced radio/TV technician for help.

The rating information is located at the bottom of the unit.

**Warning:** Changes or modifications to this unit not expressly approved by the party responsible for compliance could void the user's authority to operate the equipment.

**RF Exposure Warning Statements:**

This equipment complies with FCC radiation exposure limits set forth for an uncontrolled environment. This equipment shall be installed and operated with minimum distance 20cm between the radiator & body.



HIGH-DEFINITION MULTIMEDIA INTERFACE

The terms HDMI and HDMI High-Definition Multimedia Interface, and the HDMI Logo are trademarks or registered trademarks of HDMI Licensing Administrator, Inc. in the United States and other countries



The Bluetooth® word mark and logos are registered trademarks owned by Bluetooth SIG, Inc. and any use of such marks and logos by The Singing Machine Company, Inc. is under license. Other trademarks and trade names are those of their respective owners.

Visit Our Website: [www.singingmachine.com](http://www.singingmachine.com)

Copyright © 2022 All Rights Reserved.

The Singing Machine Company, Inc.

4060 E Jurupa Street, Unit B Ontario, CA 91761-1413 USA

### U.S. Representative


**Company Name** : The Singing Machine Company, Inc.

**Address** : 6301 NW 5th Way, Suite 2900, Fort Lauderdale, FL33309, USA

**Telephone** : 954 -596-1000

**Website** : [www.singingmachine.com](http://www.singingmachine.com)

### Documents / Resources

 The image shows the cover of the instruction manual for the Singing Machine SMC2035 Sing Cast Max. The cover is white with a black border. At the top left, there is a small logo for 'singing machine' with the tagline 'creating joy through music'. Below this, the text 'SMC2035' is prominently displayed, followed by 'INSTRUCTION MANUAL', 'MANUAL DE INSTRUCCIONES', and 'MODE D'EMPLOI'. A small image of the Sing Cast Max device is shown in the center. At the bottom, the website 'www.singingmachine.com' is listed, along with a disclaimer: 'The Singing Machine Company, Inc. is not responsible for any damage or loss of data caused by the use of this product. The Singing Machine Company, Inc. is not responsible for any damage or loss of data caused by the use of this product.'	<p><a href="#">singing machine SMC2035 Sing Cast Max</a> [pdf] Instruction Manual SMC2035, Sing Cast Max, SMC2035 Sing Cast Max</p>
---	---

### References

- 🎤 [Karaoke Systems - Mobile, At Home, Bluetooth | The Singing Machine](#)