




[Home](#) » [Sincerely Hardware Trading](#) » **Sincerely Hardware Trading G2 Combination Key Safe Box**  
**Instructions** 

## **Sincerely Hardware Trading G2 Combination Key Safe Box**



## Contents [ [hide](#) ]

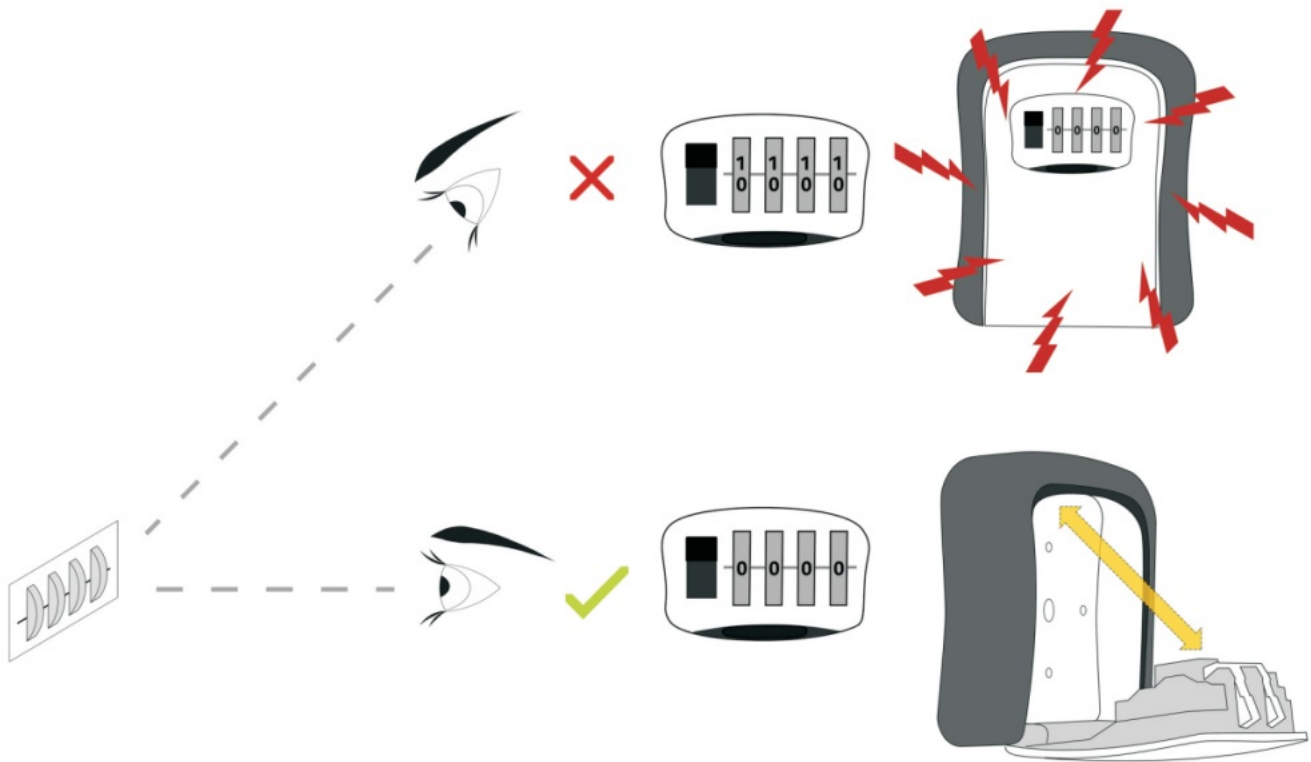
### [1 Combination Key Safe Box Instruction](#)

### [2 Documents / Resources](#)

#### [2.1 References](#)

## Combination Key Safe Box Instruction

Remove the lock from the wall before setting a new code. Always look straight on at the numbers on the dials, otherwise you could misalign them with the reference line – this could cause the lock to jam once closed.



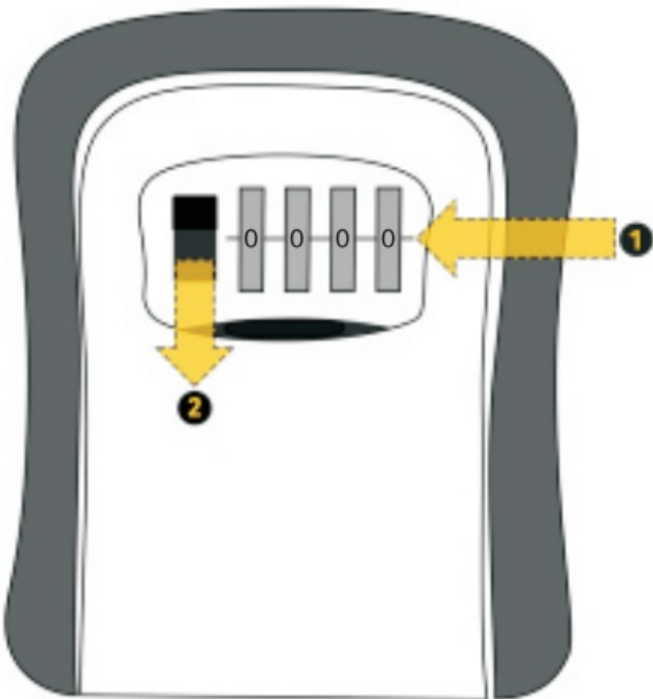
### 1. Open shutter

**1**



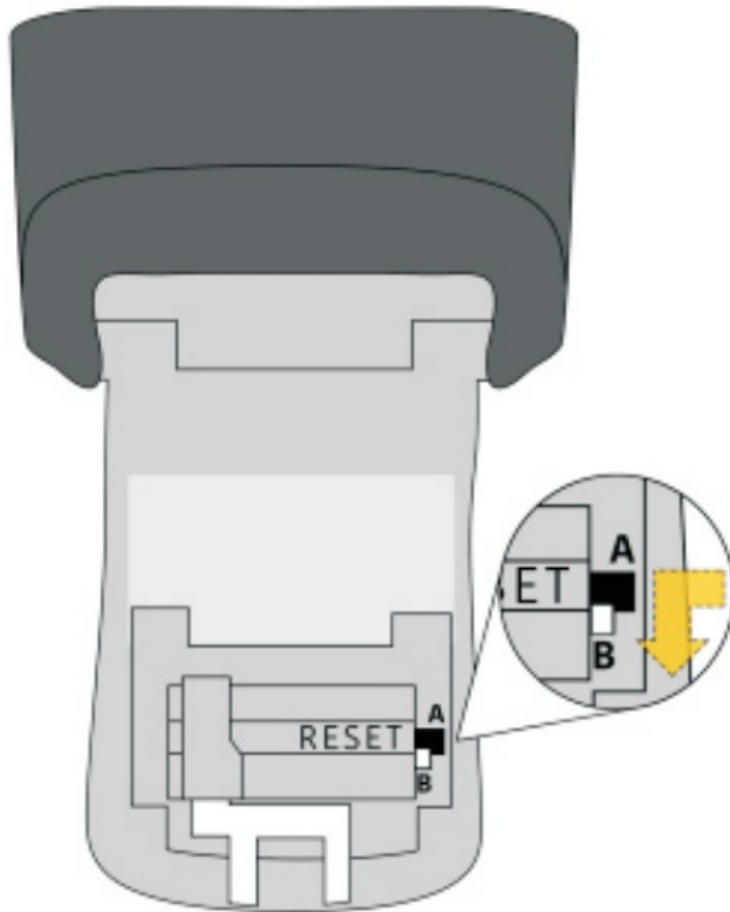
2. Enter code (default 0000) Move lever down to open door

**2**



3. Set desired new code

**3**



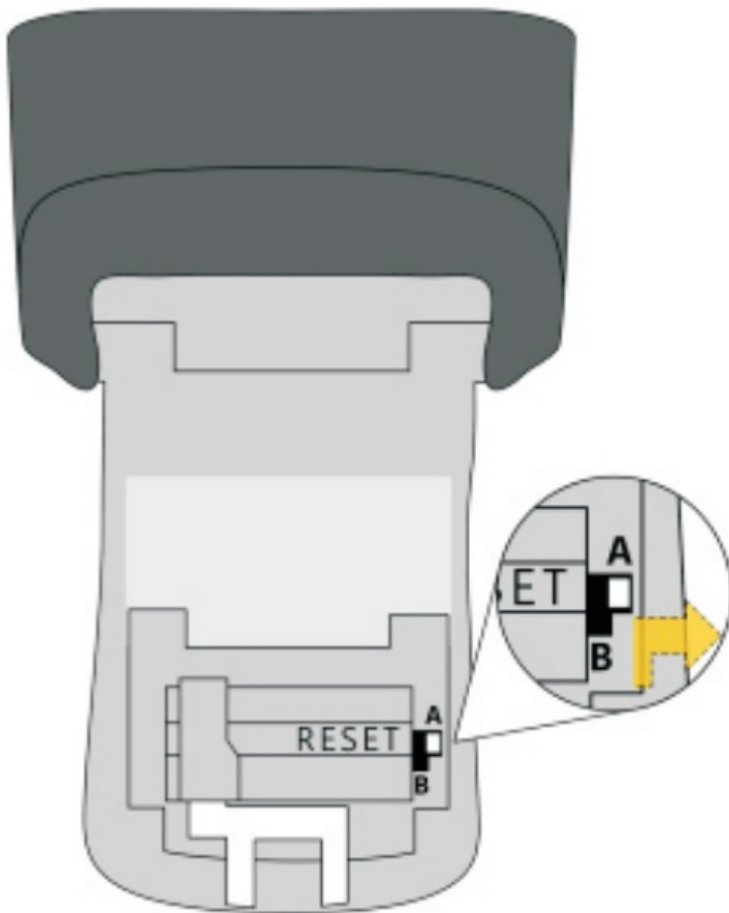
4. Set desired new code

**4**



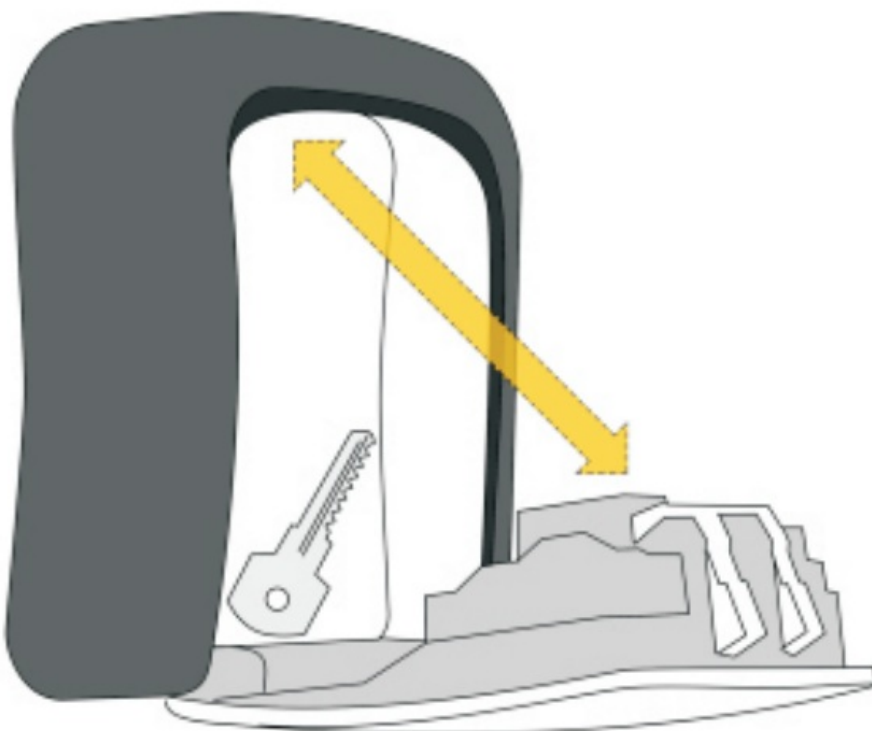
5. Slide lever from B to A

**5**



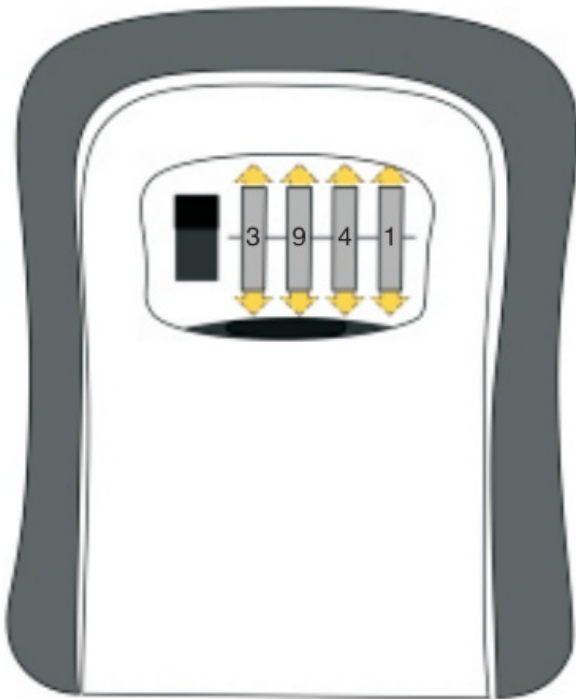
6. Place item and close door

**6**



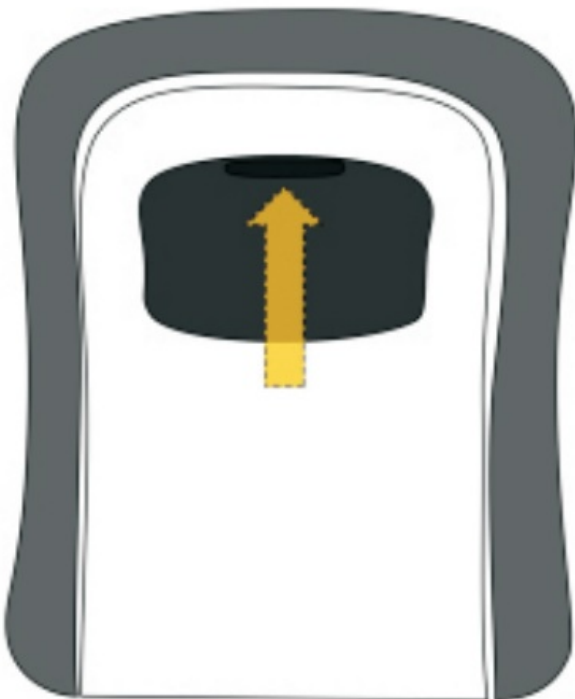
## 7. Jumble numbers

7



## 8. Close shutter

8





[Sincerely Hardware Trading G2 Combination Key Safe Box \[pdf\]](#) Instructions  
14.08.159-0, G2 Combination Key Safe Box, G2, Combination Key Safe Box, Key Safe Box, Safe Box, Box

## References

- [User Manual](#)

■ Sincerely Hardware

Trading

◆ 14.08.159-0, box, Combination Key Safe Box, G2, G2 Combination Key Safe Box, Key Safe Box, Safe Box, Sincerely Hardware Trading

---

## Leave a comment

Your email address will not be published. Required fields are marked \*

Comment \*

Name

Email

Website

☐ Save my name, email, and website in this browser for the next time I comment.

**Post Comment**

## Search:

e.g. whirlpool wrf535swhz

**Search**

[Manuals+](#) | [Upload](#) | [Deep Search](#) | [Privacy Policy](#) | [@manuals.plus](#) | [YouTube](#)

This website is an independent publication and is neither affiliated with nor endorsed by any of the trademark owners. The "Bluetooth®" word mark and logos are registered trademarks owned by Bluetooth SIG, Inc. The "Wi-Fi®" word mark and logos are registered trademarks owned by the Wi-Fi Alliance. Any use of these marks on this website does not imply any affiliation with or endorsement.