



## SIMSON SPG7593E PowerShot Portable Generator User Guide

[Home](#) » [SIMSON](#) » SIMSON SPG7593E PowerShot Portable Generator User Guide 



SPG7593E PowerShot Portable Generator  
User Guide+

### Contents

- [1 SPG7593E PowerShot Portable Generator](#)
- [2 ASSEMBLY](#)
- [3 STARTING \(PLEASE REGISTER THE PRODUCT BEFORE STARTING\)](#)
- [4 OPERATION](#)
- [5 TROUBLESHOOTING](#)
- [6 Documents / Resources](#)
  - [6.1 References](#)
- [7 Related Posts](#)

### SPG7593E PowerShot Portable Generator



IF YOU EXPERIENCE ANY ISSUES WITH YOUR GENERATOR, WE ARE HERE TO HELP YOU.

Contact FNA Group at [cservice@fna-group.com](mailto:cservice@fna-group.com) or 1-877-362-4271.


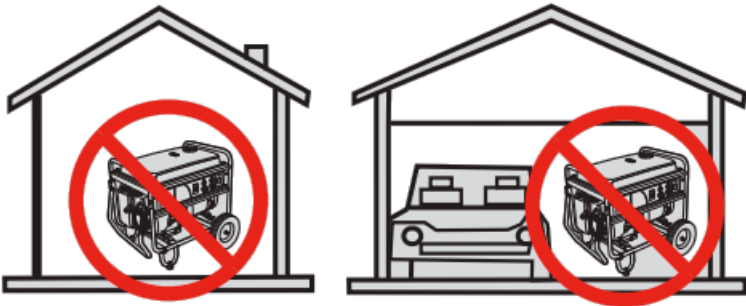
SHOULD YOU REQUIRE ASSISTANCE WITH A PART THAT MAY BE BROKEN OR MISSING OR YOU ARE


HAVING DIFFICULTY WITH ASSEMBLY OR STARTING, PLEASE CONTACT US. YOUR COMPLETE SATISFACTION IS OUR PRIMARY OBJECTIVE.



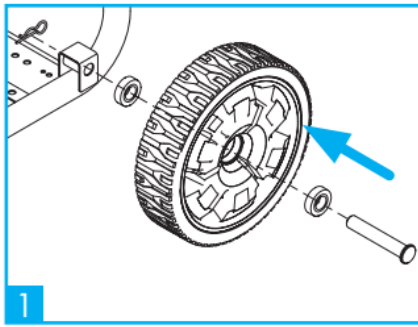
DO NOT connect a generator to a building's electrical system without the proper installation of a double-throw transfer switch by a qualified electrician. The installation must isolate the generator power from the utility power and must comply with all applicable laws and electrical codes.

Failure to isolate the generator power from the utility power can result in death or injury to electric utility workers due to back feed of electricity.

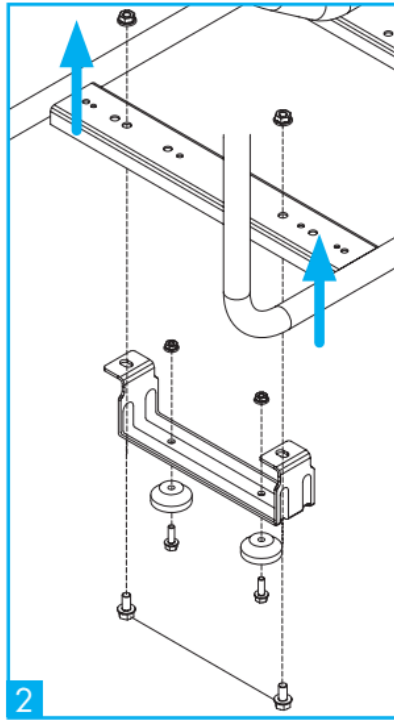
 <b>DANGER</b>	
Using a generator indoors CAN KILL YOU IN MINUTES. Generator exhaust contains carbon monoxide. This Is a po	
	
NEVER use inside a home or garage, EVEN IF doors and windows are open.	Only use OUTSIDE

	<p><b>LOOK BEFORE YOU PUMP!</b></p> <p>Ethanol Percentage</p> <table border="1"><tr><td>&lt;10% OK</td><td>NO 15% – 30% – 85%</td></tr></table>	<10% OK	NO 15% – 30% – 85%	<b>DO NOT USE FUEL CON</b>
<10% OK	NO 15% – 30% – 85%			

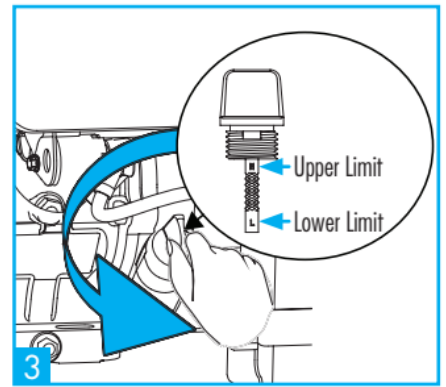
**ASSEMBLY**



1  
Install wheels.



2  
Install support bracket and damping feet.

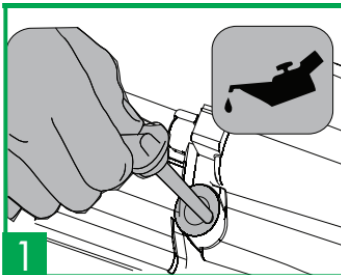


3  
Add oil to the upper limit mark on dipstick.

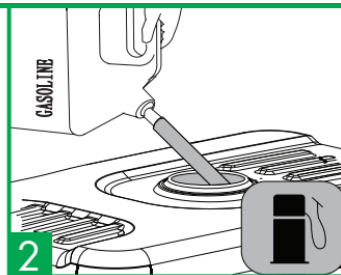
**⚠ WARNING:** This Quick Reference Guide is not a substitute for reading the operator's manual. To reduce the risk of injury, read and understand the generator operator's manuals before using this product.

## STARTING (PLEASE REGISTER THE PRODUCT BEFORE STARTING)

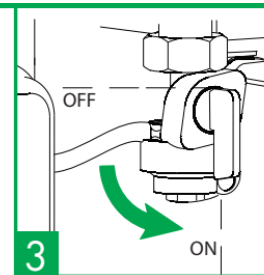
### RECOIL STARTING/STOPPING STARTING



1  
Check/fill engine oil.



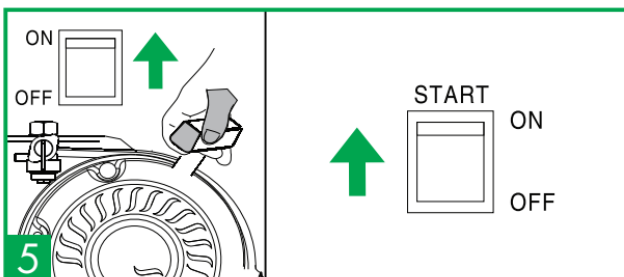
2  
Check/fill engine fuel.



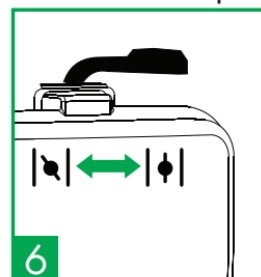
3  
Verify the fuel valve is in ON position.



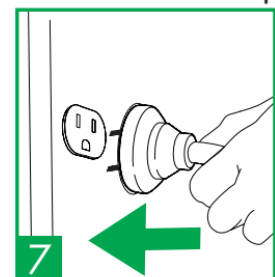
4  
Move the choke to the CLOSED position.



5  
Place the START switch in the ON position. Pull back recoil forcefully until the engine starts.

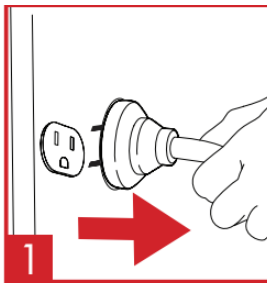


6  
Move the choke to the OPEN position.

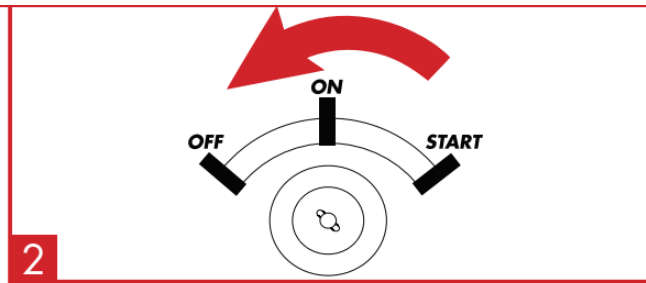


7  
Connect electrical devices.

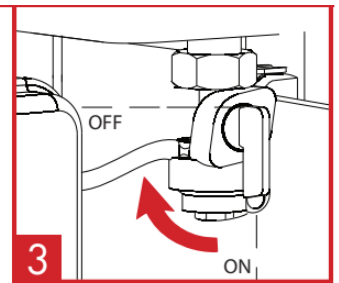
### STOPPING



**1**  
Disconnect electrical devices.

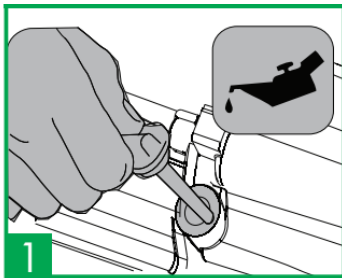


**2**  
Turn key to OFF (Once off, release key)

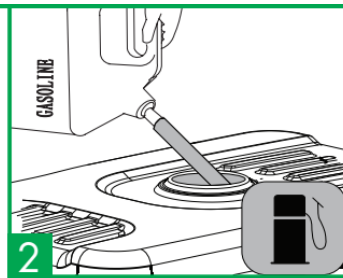


**3**  
Turn fuel valve to OFF position.

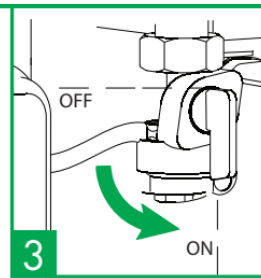
## ELECTRIC STARTING/STOPPING STARTING



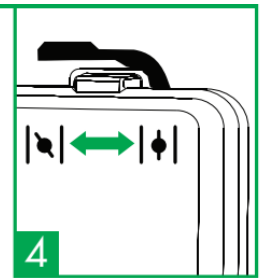
**1**  
Check/fill engine oil.



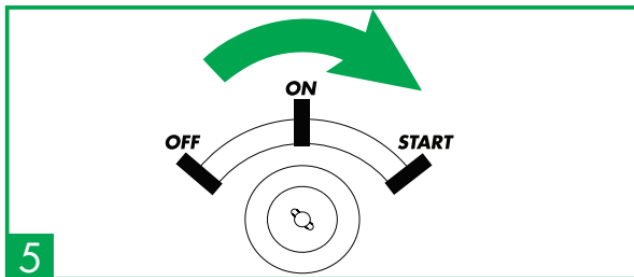
**2**  
Check/fill engine fuel.



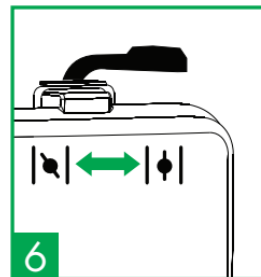
**3**  
Verify the fuel valve is in the ON position.



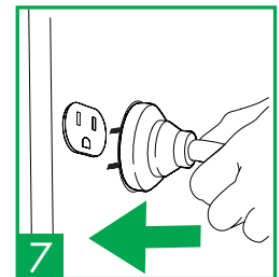
**4**  
Move the choke to the CLOSED position.



**5**  
Turn key to START (Once started, release key)

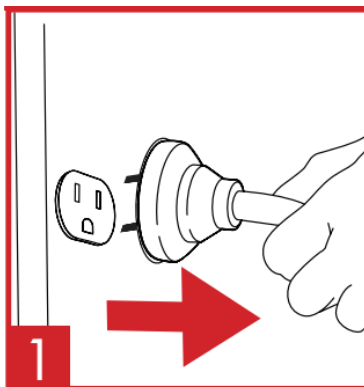


**6**  
Move the choke to the OPEN position.

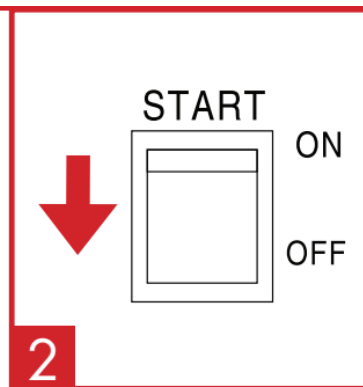


**7**  
Connect electrical devices.

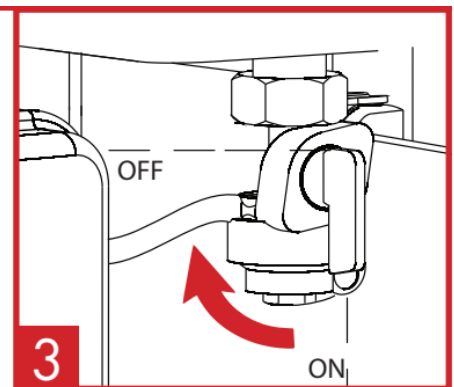
## STOPPING



**1**  
Disconnect electrical devices.



**2**  
Turn switch OFF.



**3**  
Turn fuel valve to OFF position.

## OPERATION

## USING THE GENERATOR

1. Make sure the generator can supply enough running and starting watts for the items you will power at the same time.
2. Start the generator without power cords connected.
3. Plug in and turn on the first load, preferably the largest load you have.
4. Allow the generator output to stabilize (the engine runs smoothly and the attached device operates properly).
5. Plug in and turn on the next load.
6. Again, allow the generator to stabilize.
7. Repeat the previous two steps for each additional load.

**IMPORTANT:** Never add more loads than the generator capacity. Take special care to consider surge loads in generator capacity.

## TROUBLESHOOTING

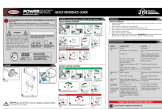
PROBLEM	POSSIBLE CAUSE	SOLUTION
The engine will not start	No fuel	Fill fuel tank.
	Stale gasoline or water in gasoline.	Drain the entire system and refill with fresh fuel
	The oil level is low.	The engine is equipped with protection and shut down when the oil level is too low. Check oil level and fill as necessary.
	The fuel valve is in the OFF position.	Turn the fuel valve to the ON position.
	A spark plug is faulty, fouled, or improperly gapped.	Replace the spark plug.
	The choke is open and therefore in the OFF position.	Close the choke to the ON position.
	Engine stored without treating or draining gasoline, or refueled with bad gasoline.	Drain fuel tank and carburetor. Refuel with fresh gasoline.
The engine will not start	Water in gasoline.	Drain the entire system and refill with fresh fuel.
	Weak spark at the spark plug.	Inspect spark plug and replace if necessary.
Engine lacks power	Engine stored without treating or draining gasoline, or refueled with bad gasoline.	Drain fuel and carburetor. Refuel with fresh gasoline.
The AC receptacle does not work	A circuit breaker is OFF.	Turn ON the AC circuit breaker.
	The connected device is not working.	Connect a different device to test.
The generator makes a "spark knock" or "pinging" noise	An occasional light "knocking" or "pinging" under heavy load is not a cause for concern. However, if the knocking or pinging occurs under normal load at steady engine speed, there may be a problem with gasoline quality.	Switch to a brand of gasoline with an octane rating of 86 or higher.

THANK YOU FOR CHOOSING SIMPSON®!



Log on today to register your product at [www.simpsoncleaning.com](http://www.simpsoncleaning.com)

Documents / Resources

	<p><a href="#">SIMSON SPG7593E PowerShot Portable Generator</a> [pdf] User Guide SPG7593E, PowerShot Portable Generator, Portable Generator, PowerShot Generator, SPG7593E, Generator</p>
---	---

References

-  [Group Publishing](#)