

SIMR-US1 Wireless Audio Adapter



# SIMR-US1 Wireless Audio Adapter User Manual

[Home](#) » [Simr](#) » SIMR-US1 Wireless Audio Adapter User Manual 

## Contents

- [1 SIMR-US1 Wireless Audio Adapter](#)
- [2 Product Information](#)
- [3 Product Usage Instructions](#)
- [4 FAQ](#)
- [5 Product Overview](#)
- [6 Connect to the First Phone](#)
- [7 Specifications](#)
- [8 Package Contents](#)
- [9 FCC STATEMENT](#)
- [10 Documents / Resources](#)
  - [10.1 References](#)

# SIMR

**SIMR-US1 Wireless Audio Adapter**



## Product Information

### Specifications

- **FCC ID:** 2BDHR-SIMR-US1
- **Compliance:** Part 15 of FCC Rules
- **Operating Conditions:** No harmful interference, must accept any received interference
- **Radiation Exposure:** Complies with FCC limits for an uncontrolled environment
- **Minimum Distance:** 20cm between radiator and body during installation and operation

## Product Usage Instructions

### Installation

1. Place the wireless audio adapter in a suitable location within range of your audio source.
2. Ensure there is a minimum distance of 20cm between the adapter's radiator and your body.
3. Connect the adapter to a power source using the provided cable.
4. Turn on the adapter using the power button.

### Operation

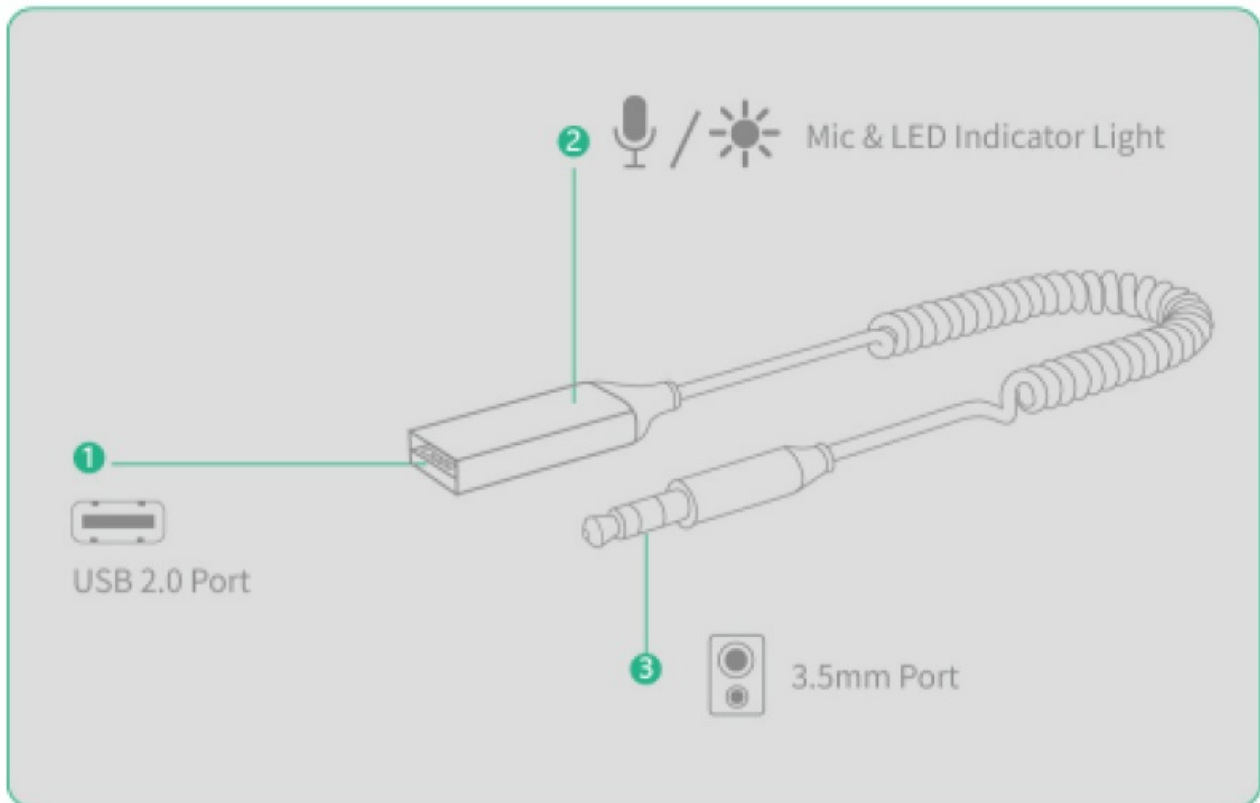
1. Pair the adapter with your audio source following the manufacturer's instructions.
2. Adjust the volume on both the audio source and the adapter to the desired levels.
3. Enjoy wireless audio streaming without any harmful interference.

## FAQ

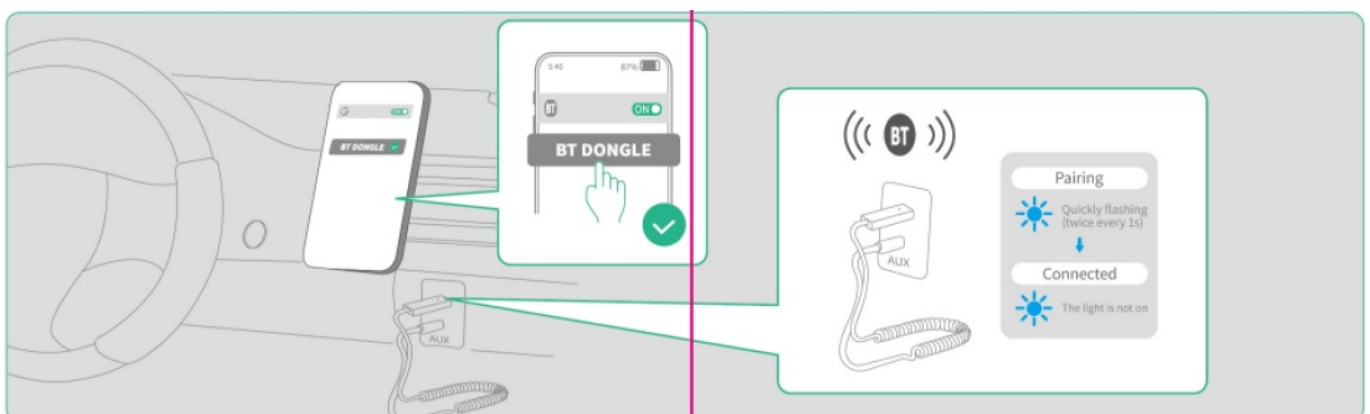
- **Q:** Can I use the wireless audio adapter with any audio source?
- **A:** The wireless audio adapter can be used with most audio sources that support Bluetooth or other wireless connectivity protocols. Ensure compatibility before use.

- **Q:** What should I do if the adapter is not pairing with my audio source?
- **A:** Make sure the adapter is in pairing mode and that your audio source is also in pairing mode. Check the distance between the devices and try again. Refer to the user manual for specific pairing instructions.
- **Q:** Is it safe to operate the wireless audio adapter close to my body?
- **A:** The adapter complies with FCC radiation exposure limits when operated with a minimum distance of 20cm between the radiator and your body. Follow the recommended guidelines for safe operation.

## Product Overview



## Connect to the First Phone

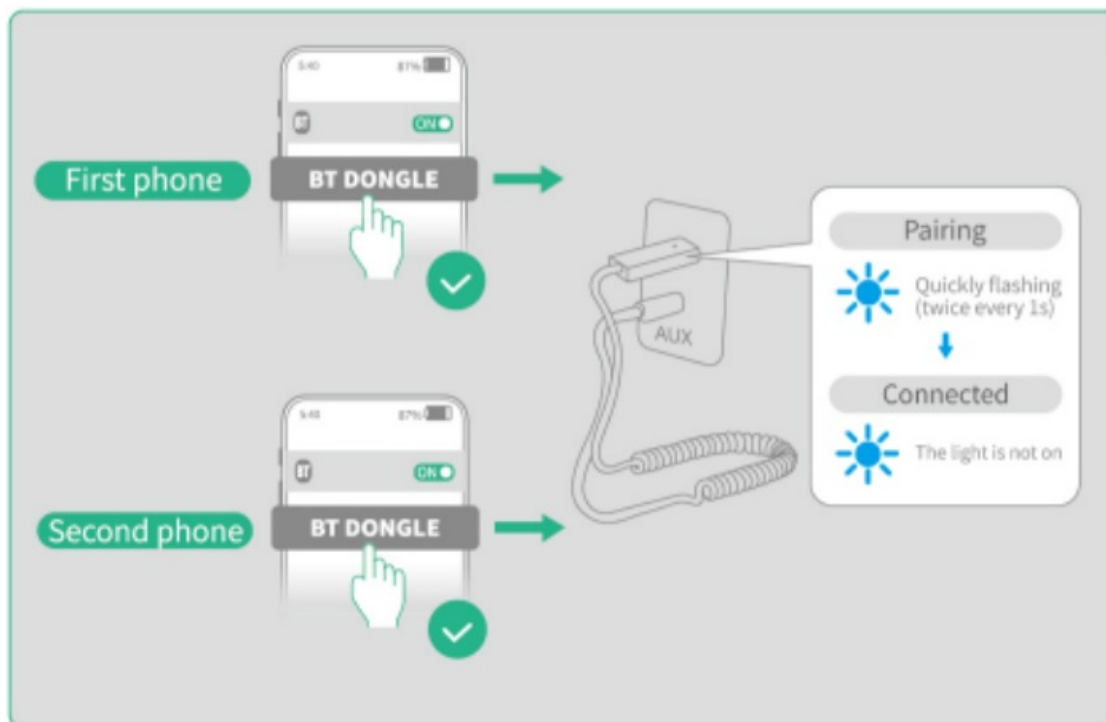


1. Plug the receiver into the car USB port and 3.5mm port.
2. It will automatically turn on and enter pairing mode when starting your car.
3. Connect to "BT DONGLE" in your phone's Bluetooth list.
4. Blue indicator slowly flashes to indicate 2 successful pairings.
5. If you want to disconnect it, you can turn off the BT of your phone or switch off the car. It will automatically

reconnect to your phone next time after powering on this unit.

**Note:** To connect a non-BT-enabled speaker, please plug the 3.5mm connector into the speaker while connecting the USB plug to a power adapter, then connect your phone to the receiver.

### Connect to the Second Phone



1. Turn off the BT of the first phone (tablet or computer) after successful pairing.
2. Connect to "BT DONGLE" in your second phone's BT list. It slowly flashes blue when the connection is completed.
3. Turn on the BT of the first phone and it will automatically reconnect to the receiver.

**Note:** It only plays music one phone at a time.

### If the Connection Fails

If pairing is not established within about 5 minutes, you can:

- Keep the receiver within the transmission range of 10m/32ft.
- Replug the USB connector of this unit.
- Reset the BT on your phone.

### Indicator

●	Power on: Blue indicator stayson for 1s
✱	Pairing: Blue indicator flashes twice every 1S
	The light is not on
	Disconnected: Blue indicator flash twice every 1s

## Specifications

- **Model:** US1
- **BT Version:** 5.3
- **Frequency Range:** 2400MHz-2483.5MHz
- **Max. RF Output Power:** 4 dBm (conducted)
- **Transmission Distance:** 10m Max (no blocking)
- **Codecs:** SBC, AAC
- **Frequency Response:** 20 Hz-20 kHz
- **Output Level (Receiving):** 740mVrms
- **SNR:** >94 dB
- **THD+N:** <0.05%
- **Sensitivity:** -42÷3dB

## Notes

- Do not use around strong magnetic fields.
- Do not expose to liquids, moist or extreme temperatures.
- Do not dismantle, impact or crush.
- Do not clean this unit with strong chemicals or detergents.
- Keep out of reach of children.
- Do not place this unit in direct sunlight.
- Please store this unit in dry, clean and moderate climates if you will not use this unit for a long time.

## Package Contents

- 1 X Car BT Audio Receiver
- 1 X User Manual

## FCC STATEMENT

This device complies with Part 15 of the FCC Rules. Operation is subject to the following two conditions:

1. this device may not cause harmful interference, and
2. this device must accept any interference received, including interference that may cause undesired operation

**NOTE:** This equipment has been tested and found to comply with the limits for a Class B digital device, according to Part 15 of the FCC Rules.

These limits are designed to provide reasonable protection against harmful interference in a residential installation. This equipment generates, uses and can radiate radio frequency energy and, if not installed and used under the instructions, may cause harmful interference to radio communications. However, there is no guarantee that interference will not occur in a particular installation.

If this equipment does cause harmful interference to radio or television reception, which can be determined by turning the equipment off and on, the user is encouraged to try to correct the interference by one or more of the following measures:

- Reorient or relocate the receiving antenna.
- Increase the separation between the equipment and the receiver.
- Connect the equipment to an outlet on a circuit different from that to which the receiver is connected.
- Consult the dealer or an experienced radio/TV technician for help

**Warning:** changes or modifications not expressly approved by the party responsible for compliance could void the user’s authority to operate the equipment.


#### Radiation Exposure Statement

This equipment complies with FCC radiation exposure limits set forth for an uncontrolled environment.

This equipment should be installed and operated with a minimum distance of 20cm between the radiator and your body.

---

## Documents / Resources

	<a href="#">simr SIMR-US1 Wireless Audio Adapter</a> [pdf] User Manual SIMR-US1 Wireless Audio Adapter, SIMR-US1, Wireless Audio Adapter, Audio Adapter, Adapter
---	---

## References

- [User Manual](#)

[Manuals+](#), [Privacy Policy](#)

This website is an independent publication and is neither affiliated with nor endorsed by any of the trademark owners. The "Bluetooth®" word mark and logos are registered trademarks owned by Bluetooth SIG, Inc. The "Wi-Fi®" word mark and logos are registered trademarks owned by the Wi-Fi Alliance. Any use of these marks on this website does not imply any affiliation with or endorsement.