



Simply Retrofits 2ft Architectural Linear Fixture User Manual

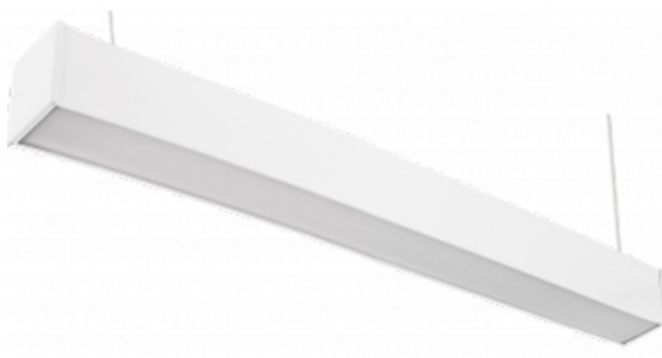
[Home](#) » [Simply Retrofits](#) » Simply Retrofits 2ft Architectural Linear Fixture User Manual 

Contents

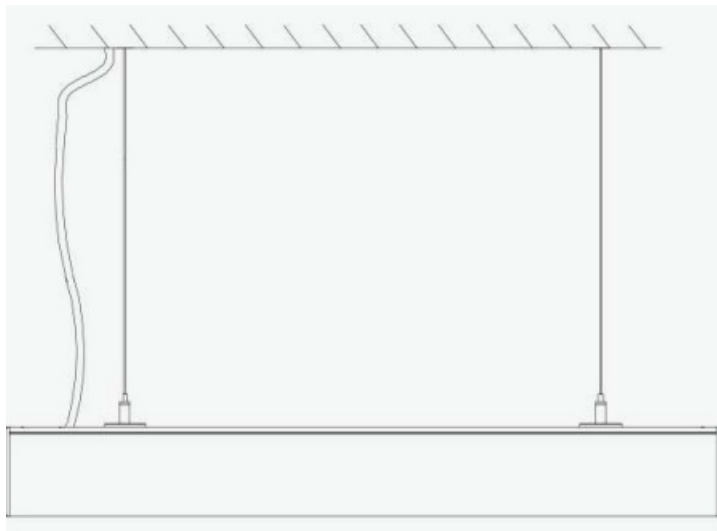
- [1 Simply Retrofits 2ft Architectural Linear Fixture](#)
- [2 Suspension installation](#)
- [3 Surface Installation](#)
- [4 WALL INSTALLATION](#)
- [5 Upper Luminous Module Assembly](#)
- [6 CONTINOUS INSTALLATION](#)
- [7 Documents / Resources](#)
 - [7.1 References](#)
- [8 Related Posts](#)



Simply Retrofits 2ft Architectural Linear Fixture



Linear Architectural Light User Manual



All the pictures are just for references.

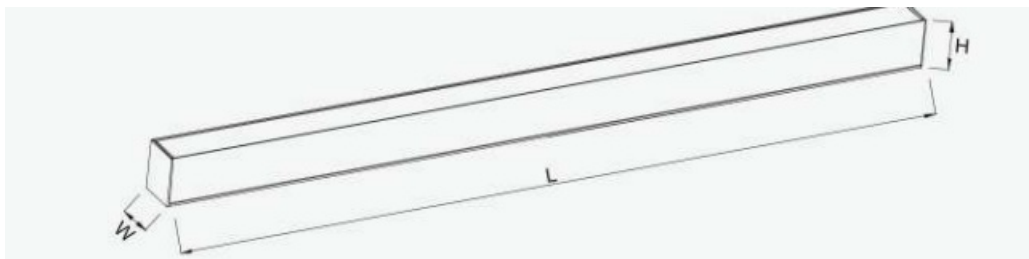
Safety Information

- **CAUTION!** Risk Of Electrical Shock
- Turn off all power prior to installation by switching off circuit breaker or removing fuse at fuse box.
- This product should be installed by a certified electrician in accordance with relevant federal, state and local building and electrical codes

Common Failures & Solutions

Common Failures	Solutions
Light is out	Ensure the lamp is well connected.
	Ensure the switch is turned on.
Flashing	Ensure the voltage is stable.
	Ensure the dimmer is compatible.

Size



SIZE	L X W X H (mm)	L X W X H (Inch)
2FT	600 X 60 X 75 mm	24 X 2.36 X 2.95"
4FT	1200 X 60 X 75 mm	48 X 2.36 X 2.95"
8FT	2400 X 60 X 75 mm	96 X 2.36 X 2.95"

Suspension installation

Wafer Head Self Tapping Screw*4

plastic dowel*4

Install shrapnel*2

- 1**

before installation, Please turn off the switch.

2

Drill two groups of 6mm Φ holes on the ceiling, each group of 2pcs, and the spacing of holes in the group is 32mm. (Below the picture)

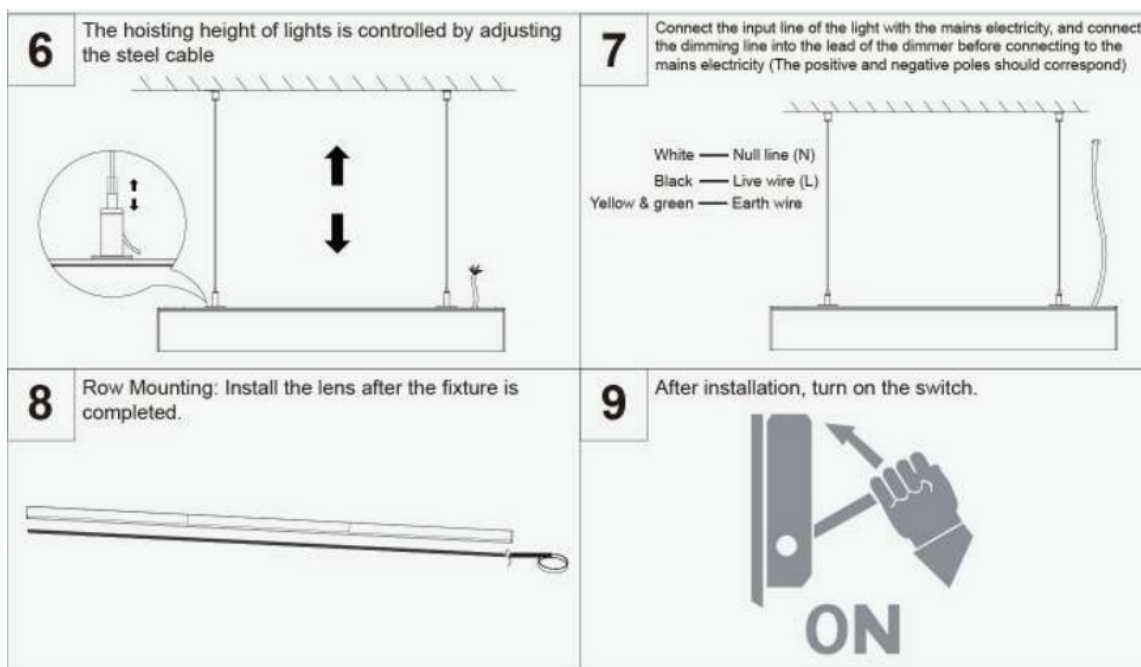
Light length	Recommended hole spacing
L (mm)	D (mm)
600	330
1200	600
2400	600

3

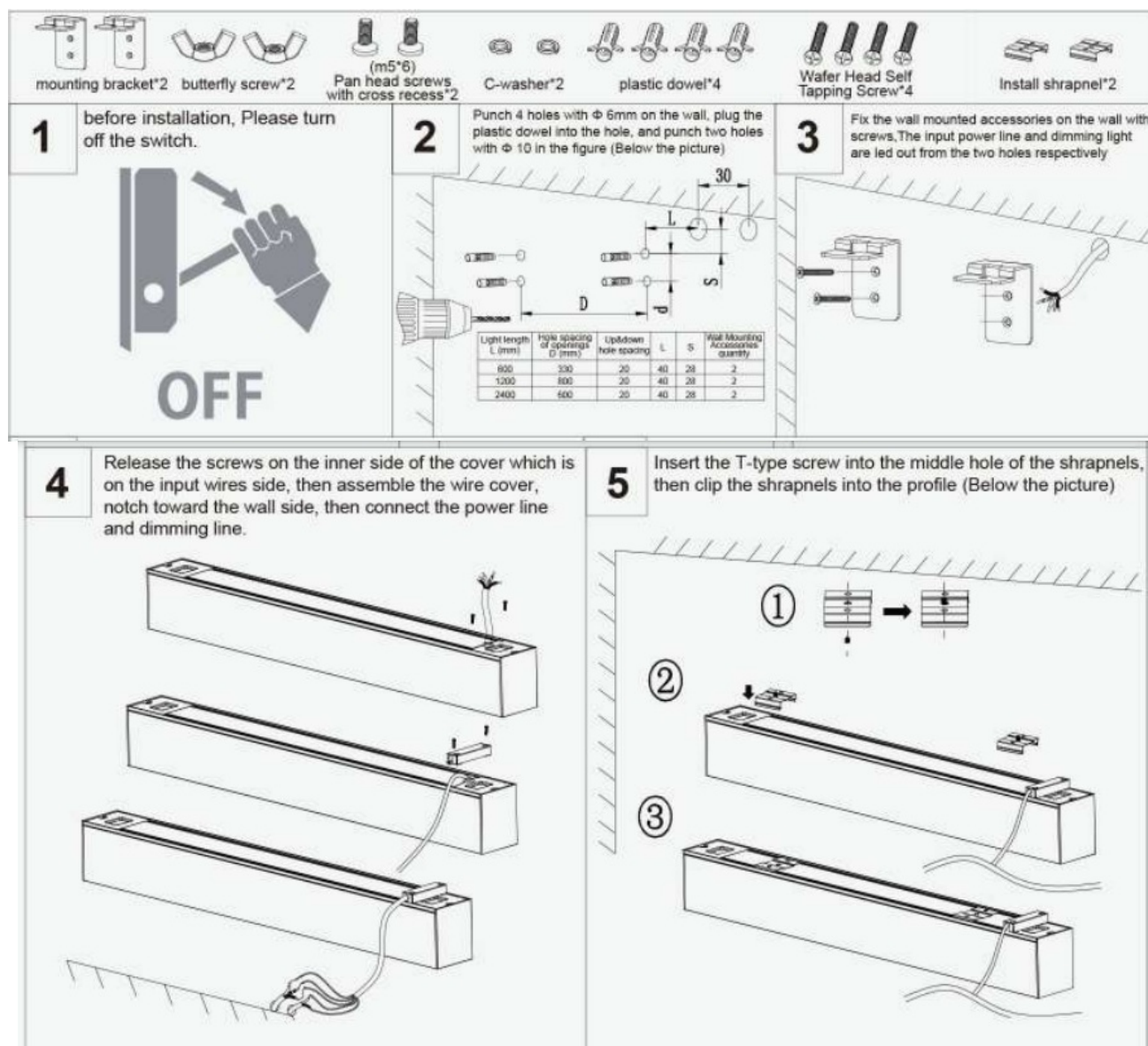
Lead out the mains electricity (Below the picture)
- 4**

Fix the accessory wire rope on the suspension wire heads (Picture A)
Fasten the Install shrapnel on the wire lock (Picture B)
- 5**

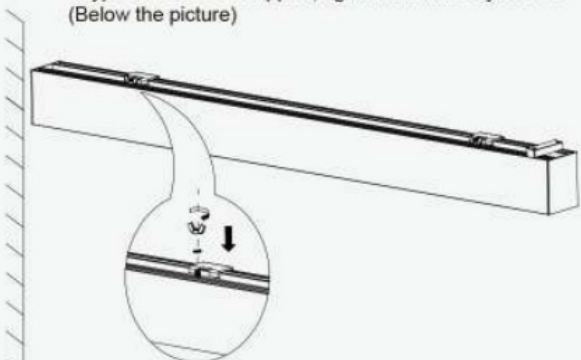
Snap the Install shrapnel on the suspension wire onto the profile of the light (Below the picture)




Surface Installation




6 Align the light with the wall mounting fitting installed in step 3 and insert the T-type screw into the top through hole of the wall mounting fitting. The c-washer is placed on the T-type screw of the support, Tighten the butterfly screw. (Below the picture)




7 After installation, turn on the switch.




WALL INSTALLATION




mounting bracket*2




butterfly screw*2




(m5*6)
Pan head screws
with cross recess*2




C-washer*2



plastic dowel*4




Wafer Head Self
Tapping Screw*4

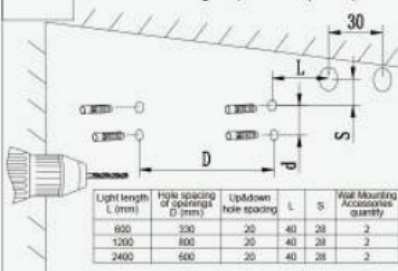


Install shrapnel*2

1 before installation, Please turn off the switch.

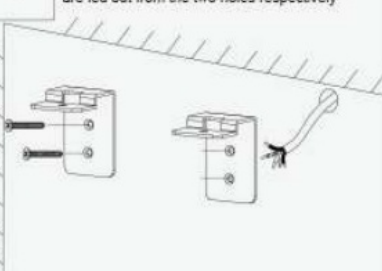


2 Punch 4 holes with Φ 6mm on the wall, plug the plastic dowel into the hole, and punch two holes with Φ 10 in the figure (Below the picture)

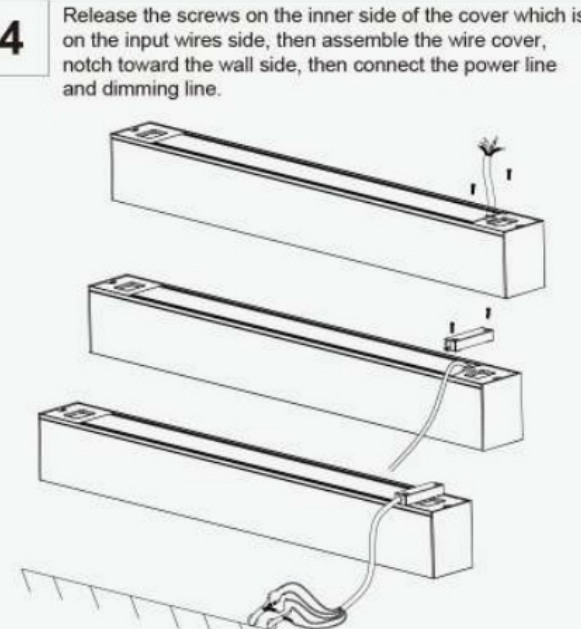


Light length L (mm)	Hole spacing or openings D (mm)	Up/down hole spacing	L	S	Wall Mounting Accessories quantity
600	300	20	40	28	2
1200	600	20	40	28	2
2400	600	20	40	28	2

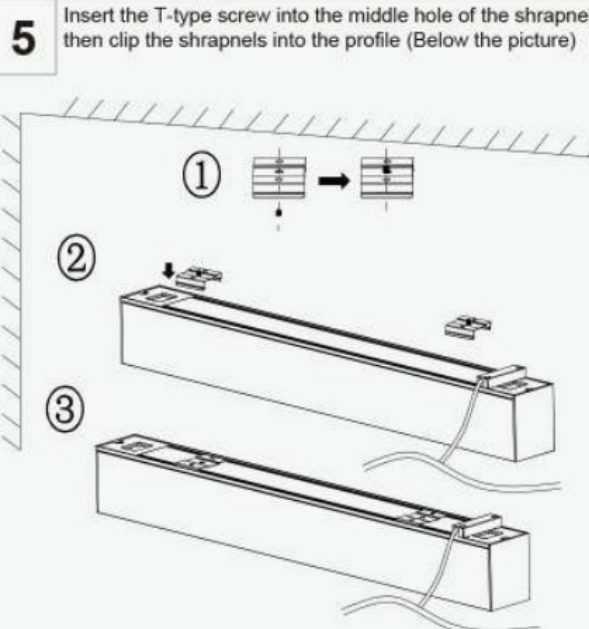
3 Fix the wall mounted accessories on the wall with screws. The input power line and dimming light are led out from the two holes respectively

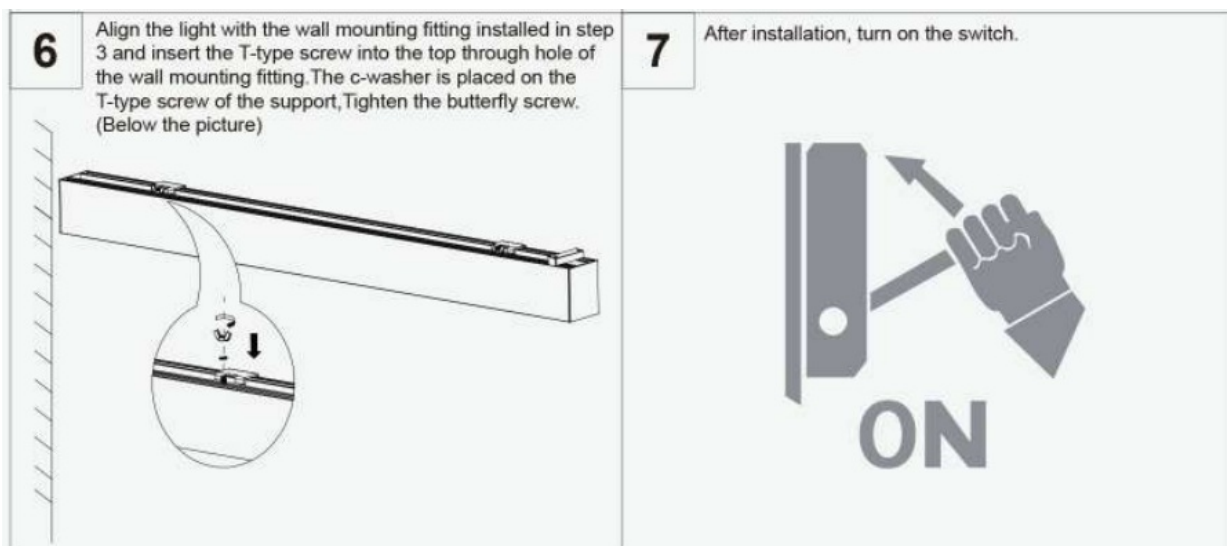


4 Release the screws on the inner side of the cover which is on the input wires side, then assemble the wire cover, notch toward the wall side, then connect the power line and dimming line.

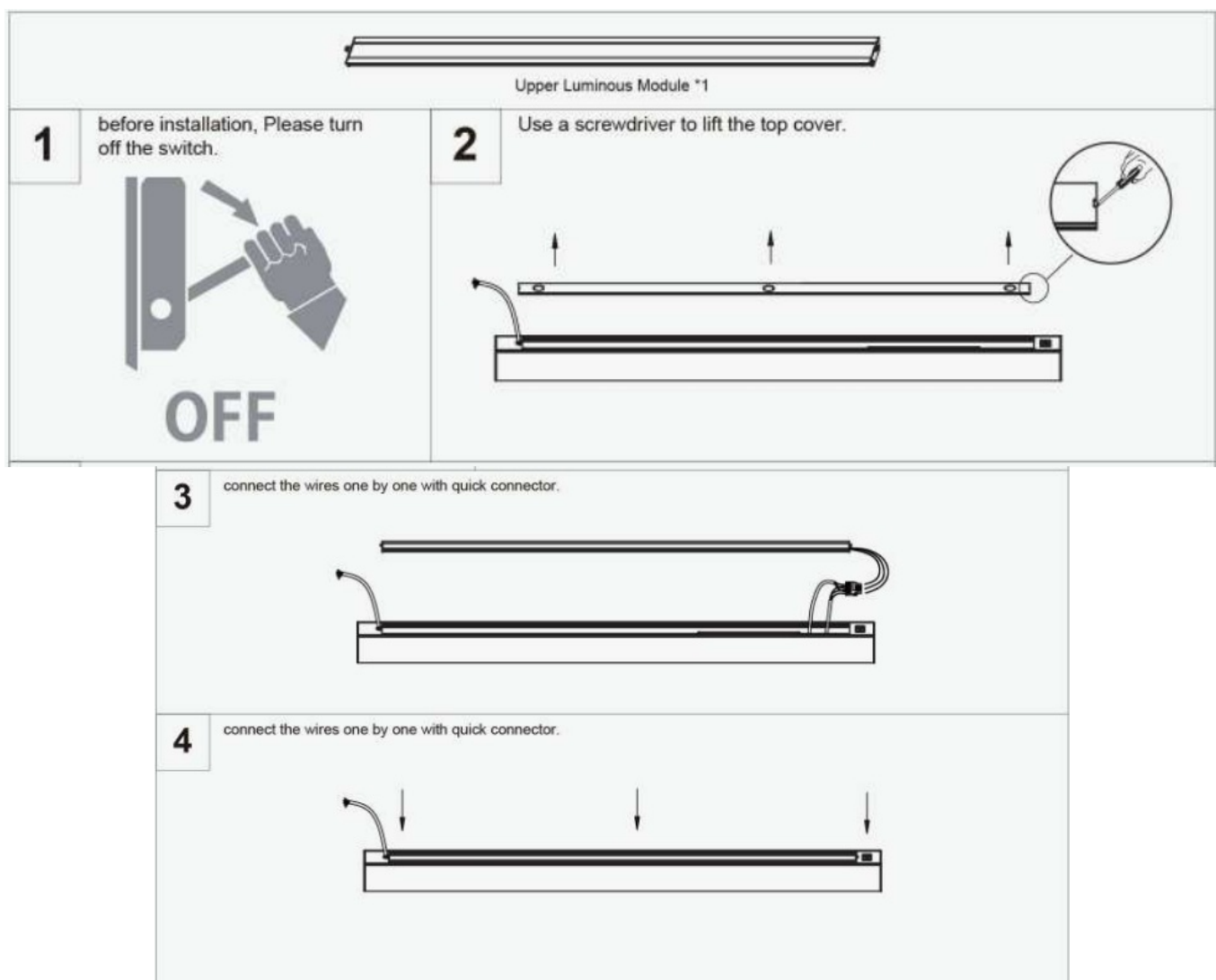


5 Insert the T-type screw into the middle hole of the shrapnels, then clip the shrapnels into the profile (Below the picture)



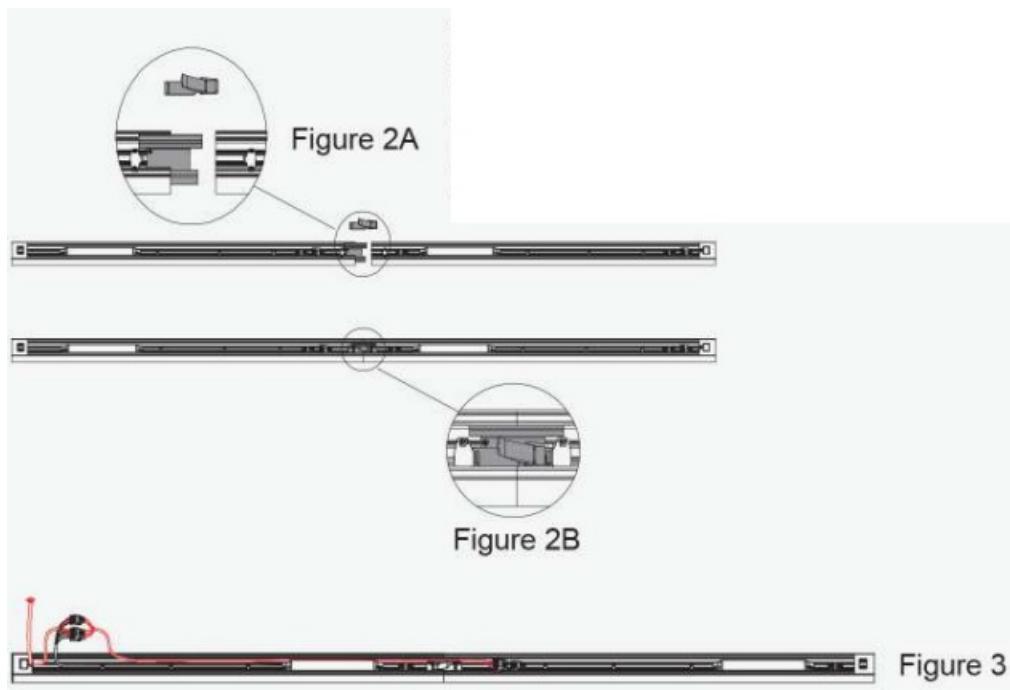


Upper Luminous Module Assembly

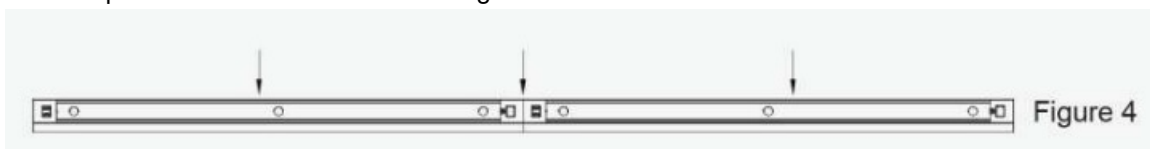




CONTINUOUS INSTALLATION



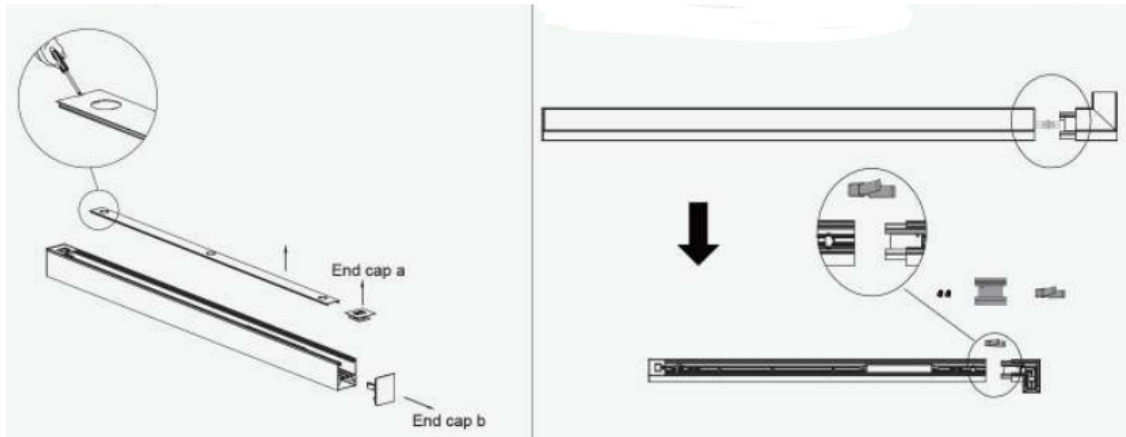
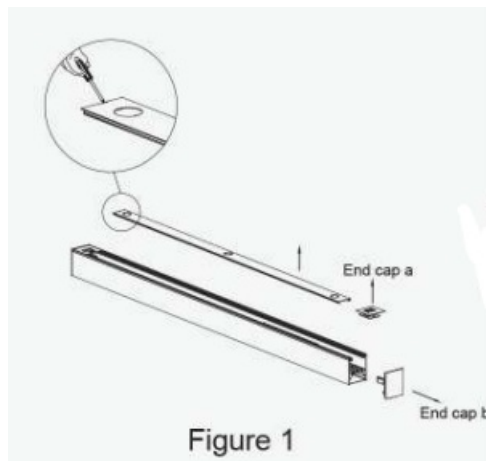
Pull the power cord of the fixture on the right to the fixture on the left inside of fixture body, and connect the wires one by one with quick connector. As shown in Figure 3.



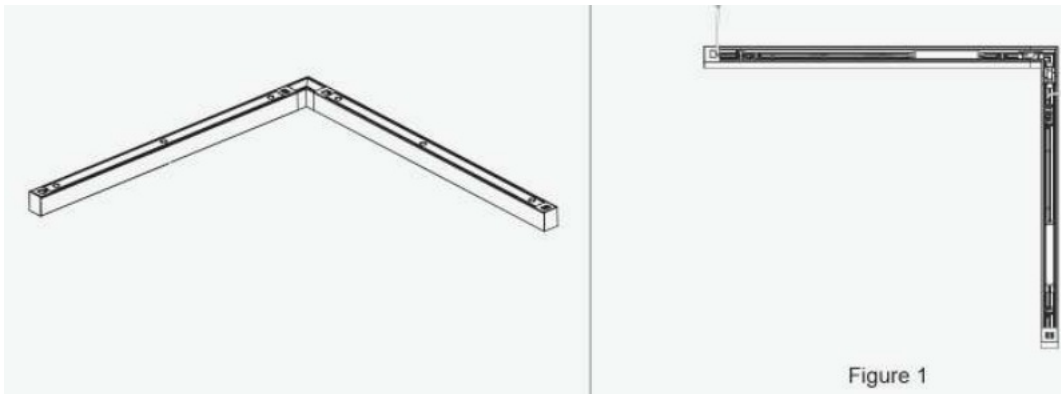
Put end cap A, end cap B and cover plate on

"L" Joint Installation

1. Use a screwdriver to lift the top cover; Remove the magnetic end cap a and the spring end cap b by hand, as shown the left Figure.
2. Insert terminal pin to one side of fixture. And then insert H mechanical joiner into one side of fixture. Then please connect fixture to "L" corner kit. Check if the terminal pin is connected normally.



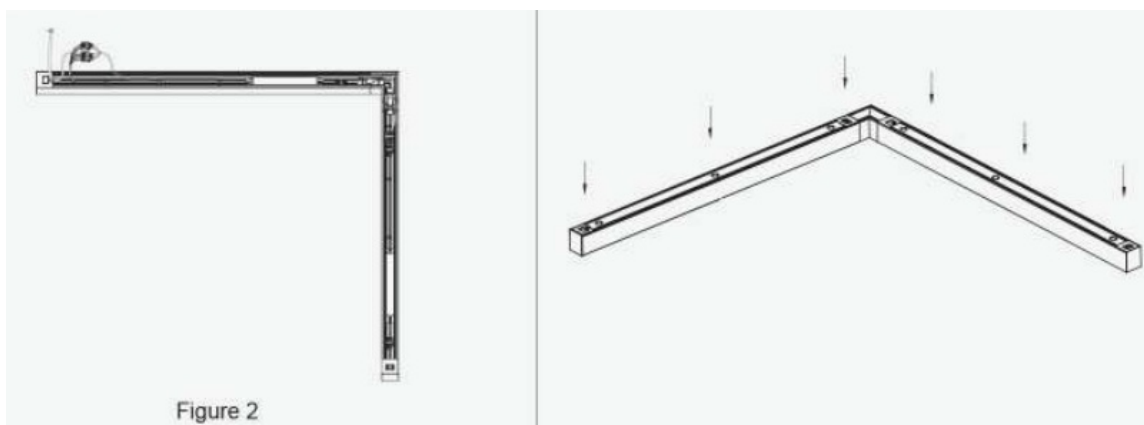
3. The other side connection is same as the last step.



4. Power cord has two ways to be connected. **Way one:** Every fixture are power by its own power cord as below figure 1 shown.

5. **Way two:** Fixture connected in in series. Pull the AC line

6. Put cover plate on. of second fixture to first fixture inside of fixture body, and connect the wires one by one with quick connector. As shown in Figure 2.



Documents / Resources



[Simply Retrofits 2ft Architectural Linear Fixture](#) [pdf] User Manual
2ft Architectural Linear Fixture, Architectural Linear Fixture, Linear Fixture, Fixture

References

- [Simply Retrofits – High Quality LED Lights, Panels, Highbays, Pot Lights & more](#)
- [User Manual](#)