



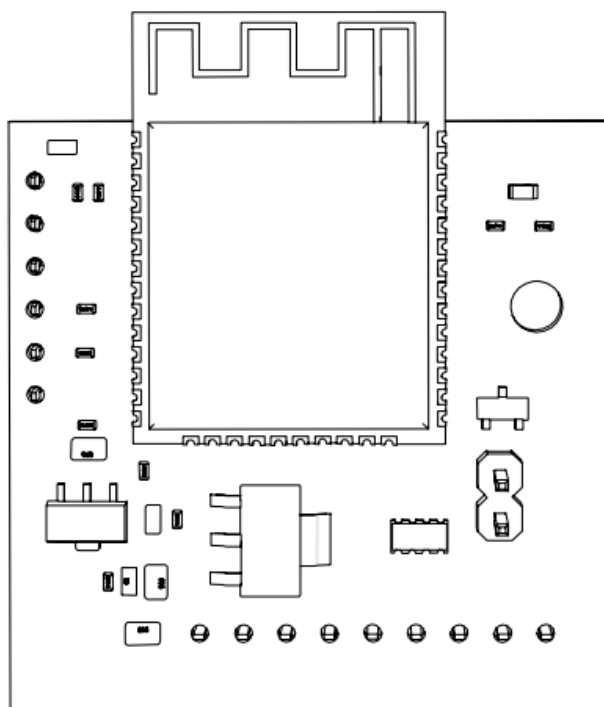
Simon SM34 Bluetooth Communications Module User Guide

[Home](#) » [Simon](#) » [Simon SM34 Bluetooth Communications Module User Guide](#) 

Simon SM34 Bluetooth Communications Module User Guide



This Bluetooth communications module will allow an SM34 charger to be managed through the Simon Plug&Drive APP.



Contents

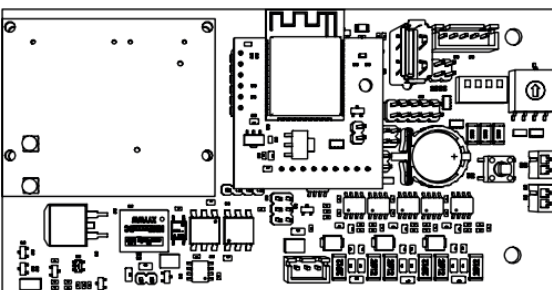
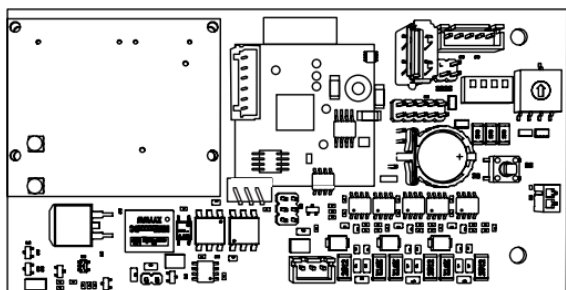
- [1 SECURITY WARNINGS](#)
- [2 INSTALLATION](#)
- [3 CHARGER CONFIGURATION](#)
- [4 Documents / Resources](#)
 - [4.1 References](#)
- [5 Related Posts](#)

SECURITY WARNINGS

- The installation and maintenance of SM34 equipment and accessories must be performed by properly trained and qualified personnel.
- Strictly comply with the current safety standards according to the regulations in your country.
- The installer and/or maintenance personnel must be properly protected against the risk of accidents caused by direct and indirect contact.
- Before manipulating the equipment, make sure that it is not connected to a power source.
- The installation must be inspected at least once a year by a qualified technician.
- Only use original Simon S.A.U. accessories and replacements.
- Simon S.A.U. is not responsible for damages that may arise from inadequate use of the equipment and accessories, nor from manipulations that modify the original state of the equipment, accessories or the included protections.

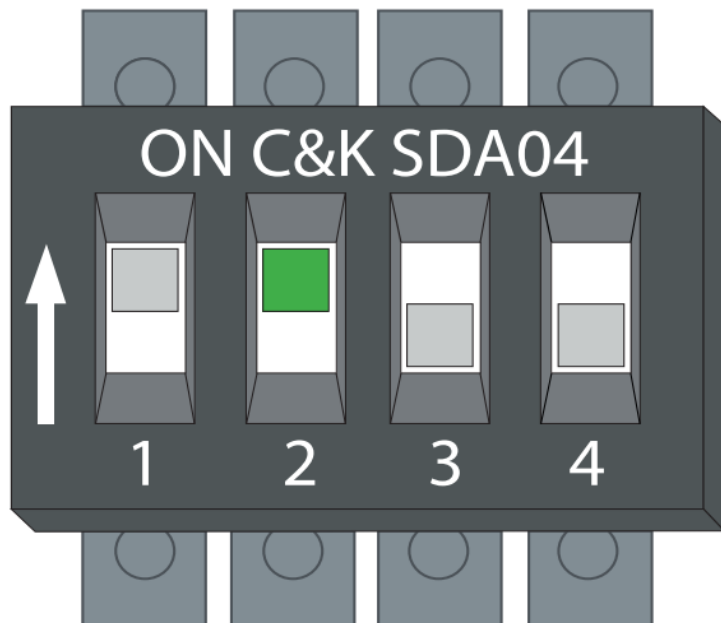
INSTALLATION

Connect the Bluetooth communications module to the charger connector as shown:



CHARGER CONFIGURATION

Once the Bluetooth communications module is installed, the charger must be configured to enable Bluetooth communications.

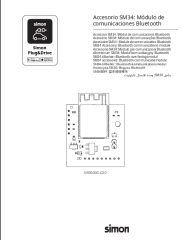


switch 2 → **ON** – Bluetooth communication enabled
OFF – Bluetooth communication disabled

Changes to the switch must be made with the charger powered off in order to take effect. Once Bluetooth communications have been activated, the configuration of the charger must be completed through the Simon Plug&Drive app.

simon

Documents / Resources

	<p>Simon SM34 Bluetooth Communications Module [pdf] User Guide SM34 Bluetooth Communications Module, SM34, Bluetooth Communications Module, Communications Module, Module</p>
---	---

References

- [5 SIMON - Líder en material eléctrico y referente en diseño](#)

- [User Manual](#)

[Manuals+](#), [Privacy Policy](#)

This website is an independent publication and is neither affiliated with nor endorsed by any of the trademark owners. The "Bluetooth®" word mark and logos are registered trademarks owned by Bluetooth SIG, Inc. The "Wi-Fi®" word mark and logos are registered trademarks owned by the Wi-Fi Alliance. Any use of these marks on this website does not imply any affiliation with or endorsement.