

simon

ALK7200-8 Column and 2 Sided Oval Extensions



simon ALK7200-8 Column and 2 Sided Oval Extensions Installation Guide

[Home](#) » [Simon](#) » [simon ALK7200-8 Column and 2 Sided Oval Extensions Installation Guide](#) 

Contents

- [1 Simon ALK7200-8 Column and 2-Sided Oval Extensions](#)
- [2 Product Usage Instructions](#)
- [3 Frequently Asked Questions](#)
- [4 INSTALLATION WITH EXTENSION](#)
- [5 MODELS](#)
- [6 INSTALLATION](#)
- [7 Documents / Resources](#)
 - [7.1 References](#)

simon

Simon ALK7200-8 Column and 2-Sided Oval Extensions



Product Specifications

- **Model:** ALK7200/8
- **Maximum Length:** 300 cm
- **Column and oval-shaped extenders:** K45
- **Optional lengths available:** 50 cm, 100 cm, 150 cm

Product Usage Instructions

Preparation

1. Ensure you have all the necessary components as per the manual.
2. Identify the type of ceiling to determine the installation method.

Installation on False Ceiling

1. Follow the specific instructions based on the type of ceiling mentioned at the beginning of the manual.
2. Use the extenders and columns to reach the desired length, ensuring not exceed the maximum of 300 cm.
3. Securely attach the product to the ceiling, following the provided guidelines.

Additional Information

If you encounter any difficulties during installation, refer to the customer technical support contact details provided below.

Frequently Asked Questions

Q: What should I do if the product length exceeds 300 cm?

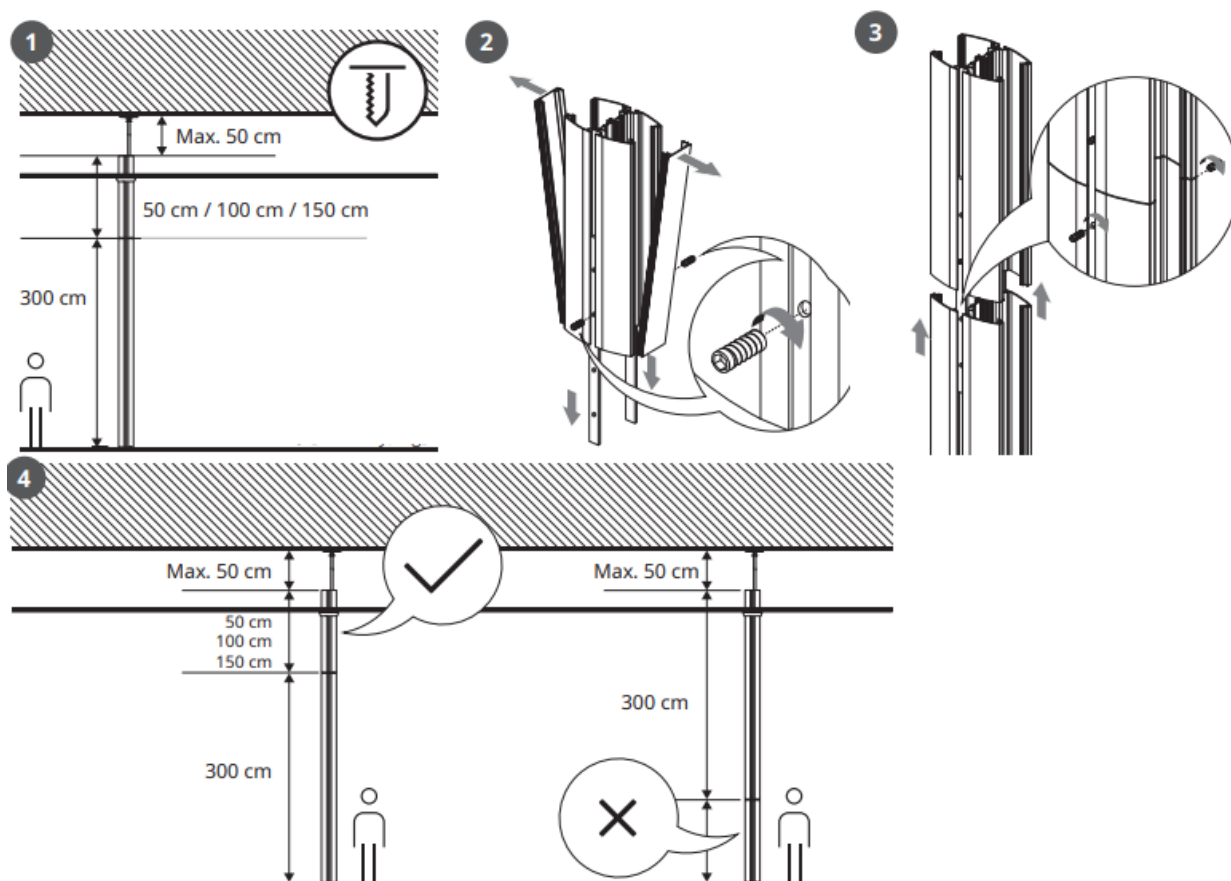
A: Ensure to use the extenders and columns provided in optional lengths (50 cm, 100 cm, 150 cm) to reach your desired length without exceeding the maximum limit.

Q: How do I contact customer support for assistance?

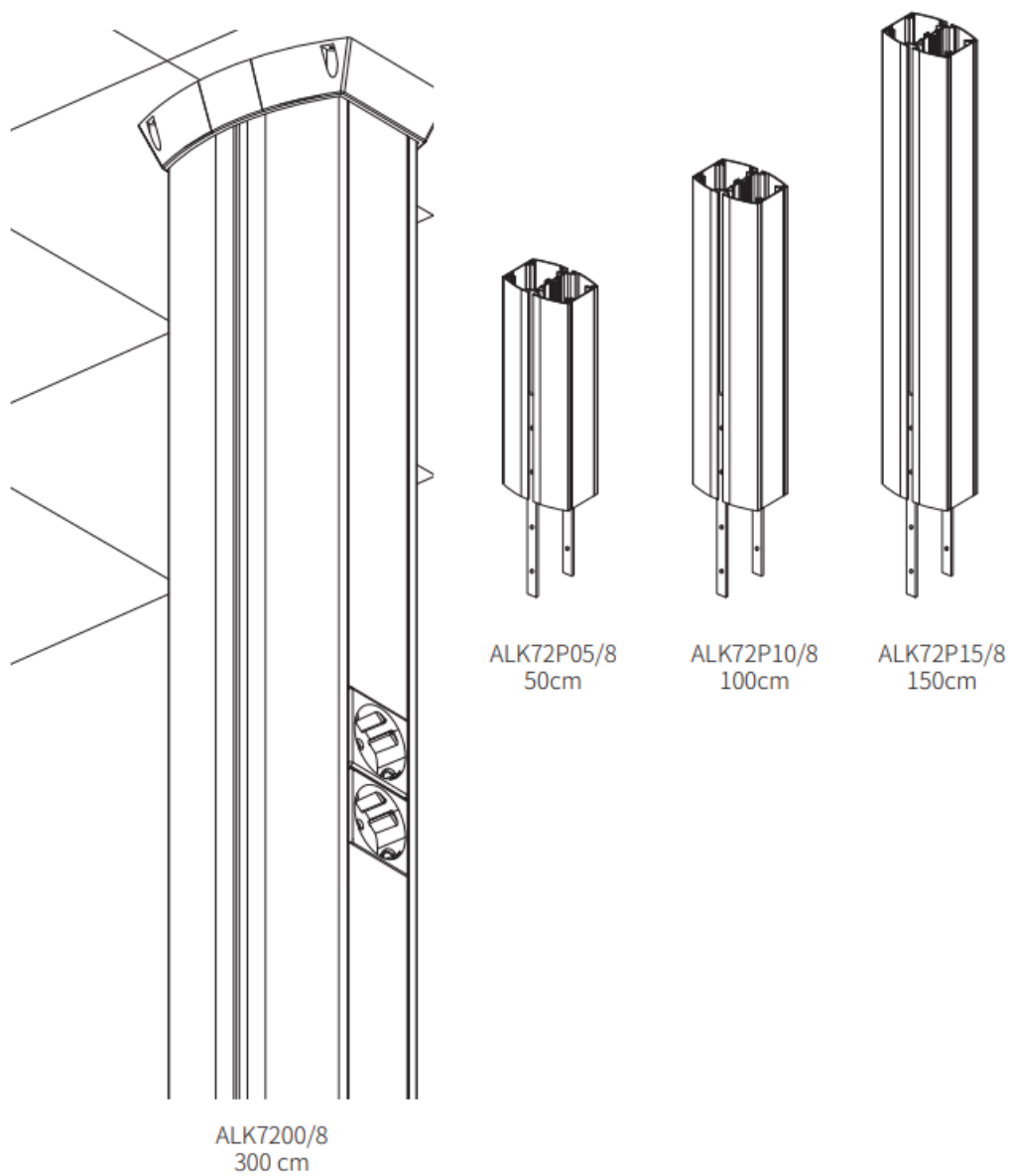
A: You can reach out to SIMON S.A.U. Customer Technical Support via email at sat@simon.es or by phone at (+34) 651 761 346.

Contact Information: SIMON S.A.U. P.O.B 08093 08080 Barcelona Spain | Website: www.simonelectric.com

INSTALLATION WITH EXTENSION

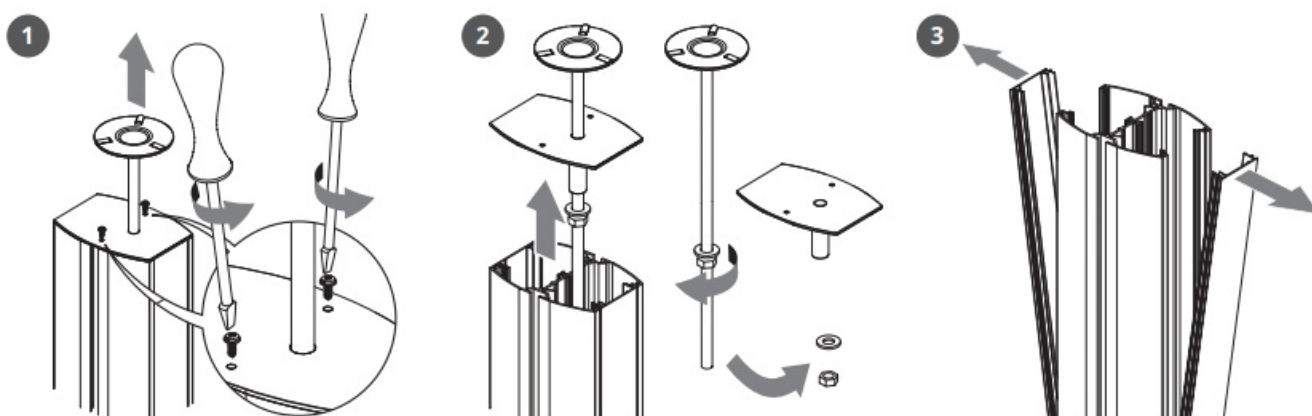


- Continue the installation following the instructions according to the type of ceiling, as indicated at the beginning of this instruction sheet.
- False ceiling installation
- Normal ceiling installation

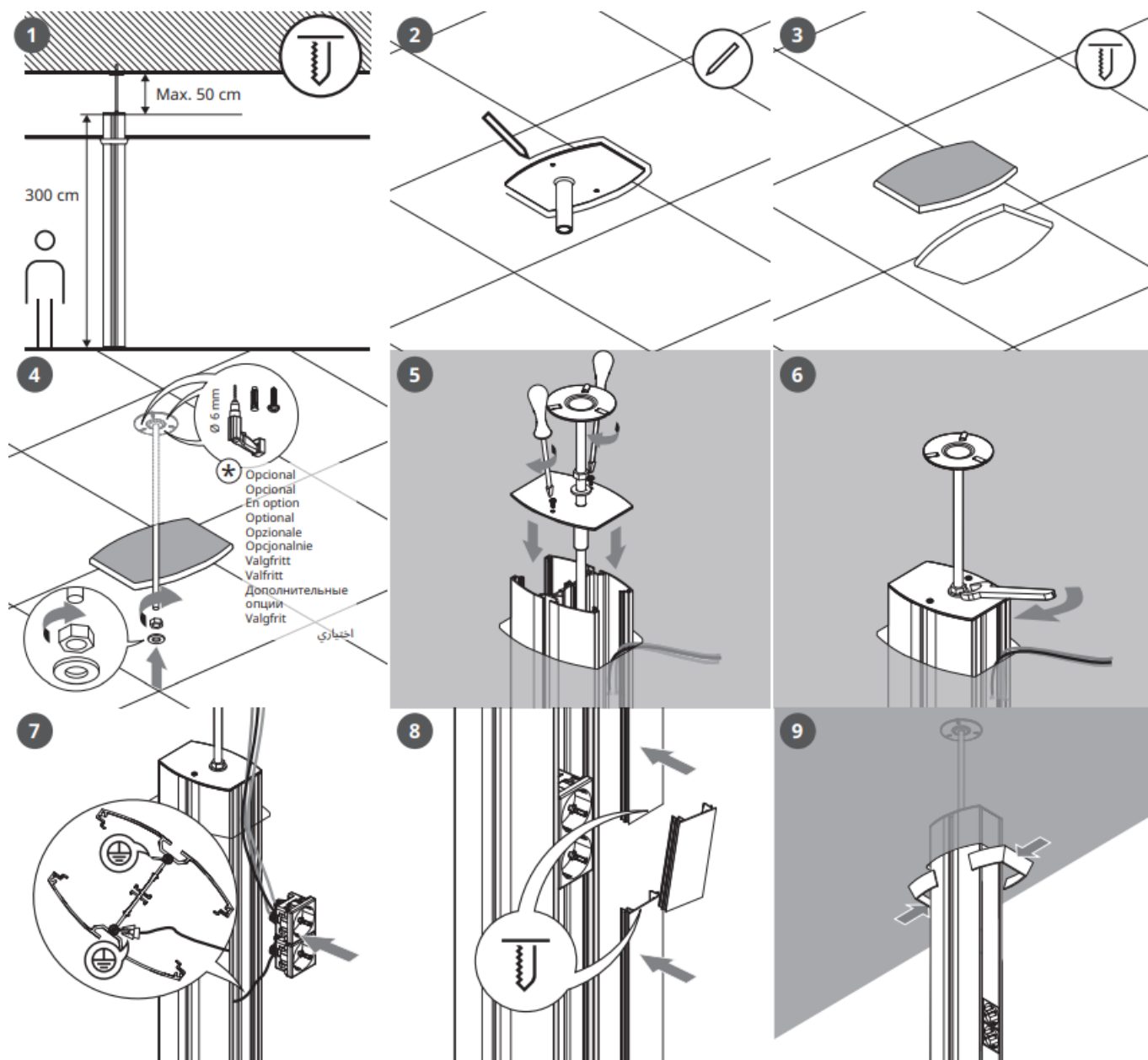


INSTALLATION

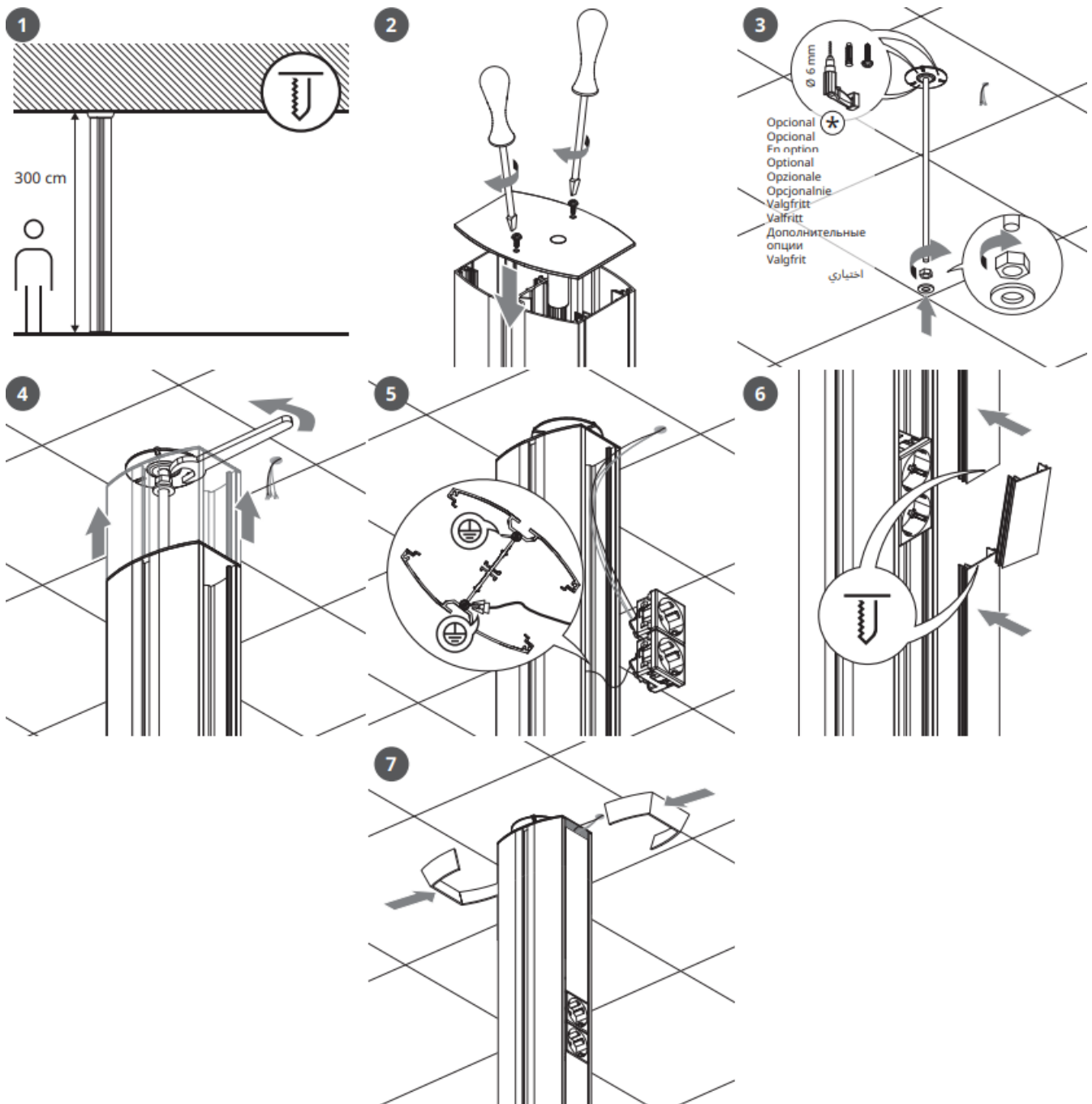
PREPARATION



FALSE CEILING INSTALLATION

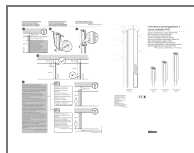


NORMAL CEILING INSTALLATION



Cut the pole if necessary

Documents / Resources



[simon ALK7200-8 Column and 2 Sided Oval Extensions](#) [pdf] Installation Guide
ALK7200-8, ALK7200-8 Column and 2 Sided Oval Extensions, Column and 2 Sided Oval Extensions, 2 Sided Oval Extensions, Oval Extensions, Extensions

References

- [5 SIMON - Líder en material eléctrico y referente en diseño](#)
- [User Manual](#)

