



SIM Technology P10 Smart POS Terminal User Manual

[Home](#) » [SIM Technology](#) » SIM Technology P10 Smart POS Terminal User Manual 



Version: vi.1

Description: 620><125mm 10A020 RO

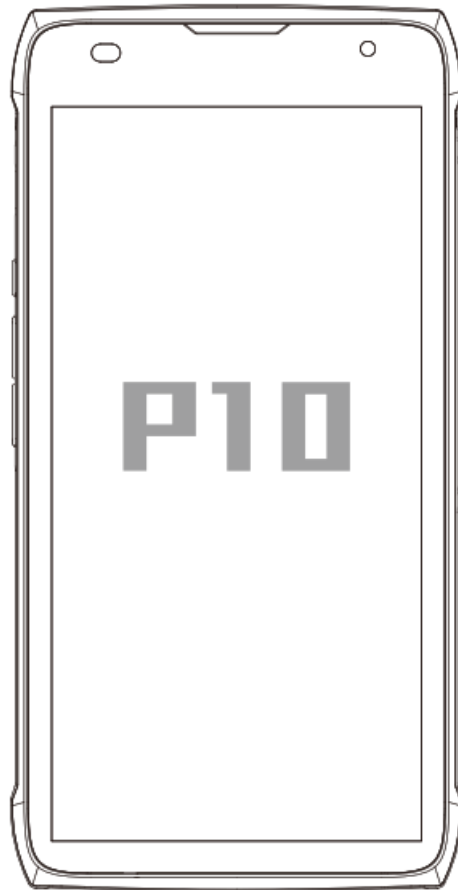
Revised by: hexode e

P10 Smart POS Terminal

User Manual

Product Name: Smart POS Terminal

Test Model: P10



Contents

- 1 P10 Smart POS Terminal
- 2 Get to Know the Product
- 3 Install SIM/SAM/TF Card
- 4 Instructions for Operation
- 5 Copyright Statement
- 6 Disclaimer
- 7 Warranty Card
- 8 FCC Statement
- 9 Documents / Resources
 - 9.1 References

P10 Smart POS Terminal

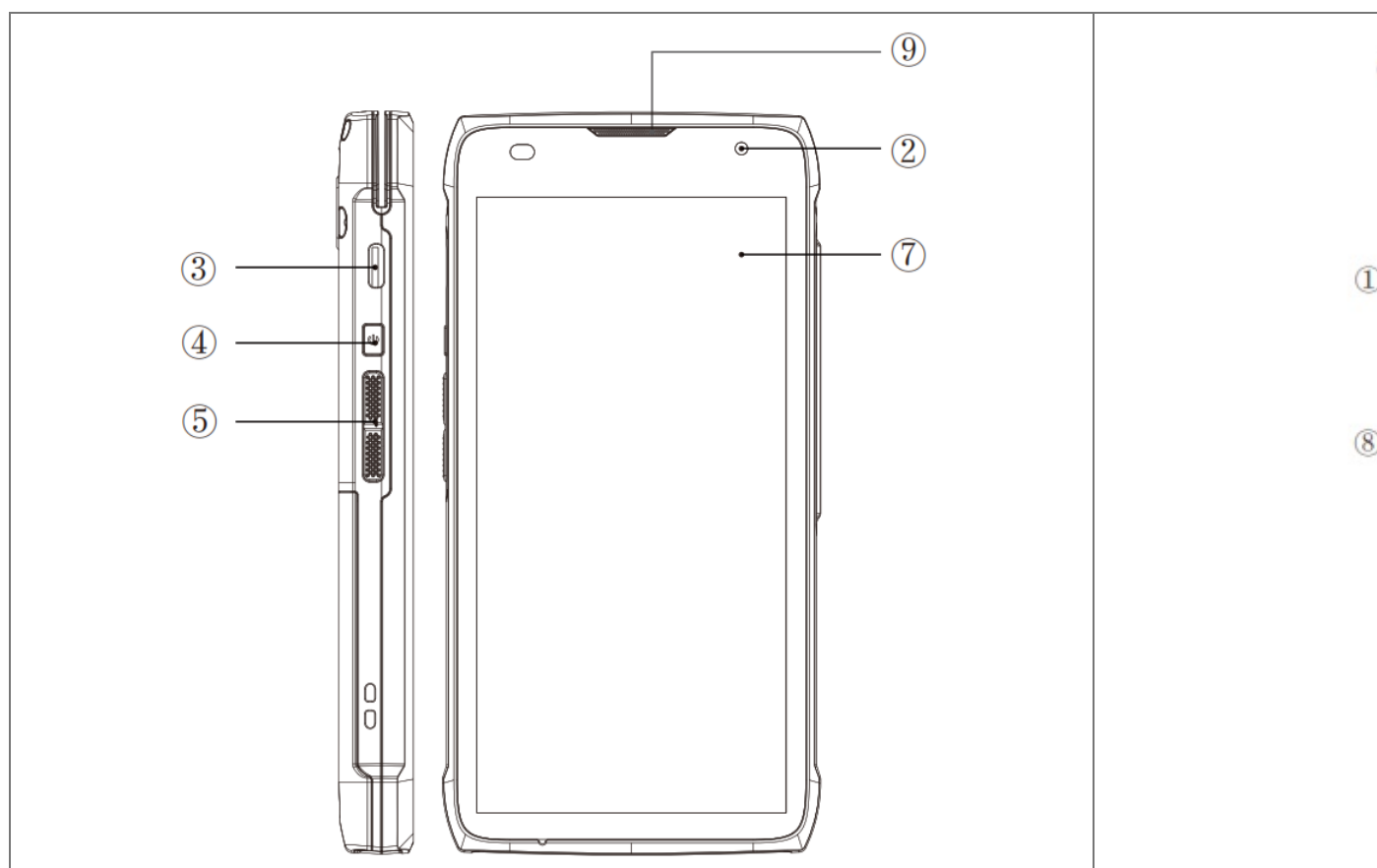
Before you experience and use the device, please read the following carefully:

When you take the device out of the package, the battery is not fully charged, please perform a full charge and discharge when using the device for the first time.

In order to ensure the charging effect of the device, please use the original power adapter and USB cable. Your device is equipped with a removable lithium battery and back cover, please turn the device off before removing the battery.

Disassembling or tampering with the casing of the device may cause the product to lose some functions and the qualification of warranty.

CAUTION: Explosion risk if the battery is replaced with an incorrect battery model. Dispose of the exhausted battery according to the instructions on the battery.



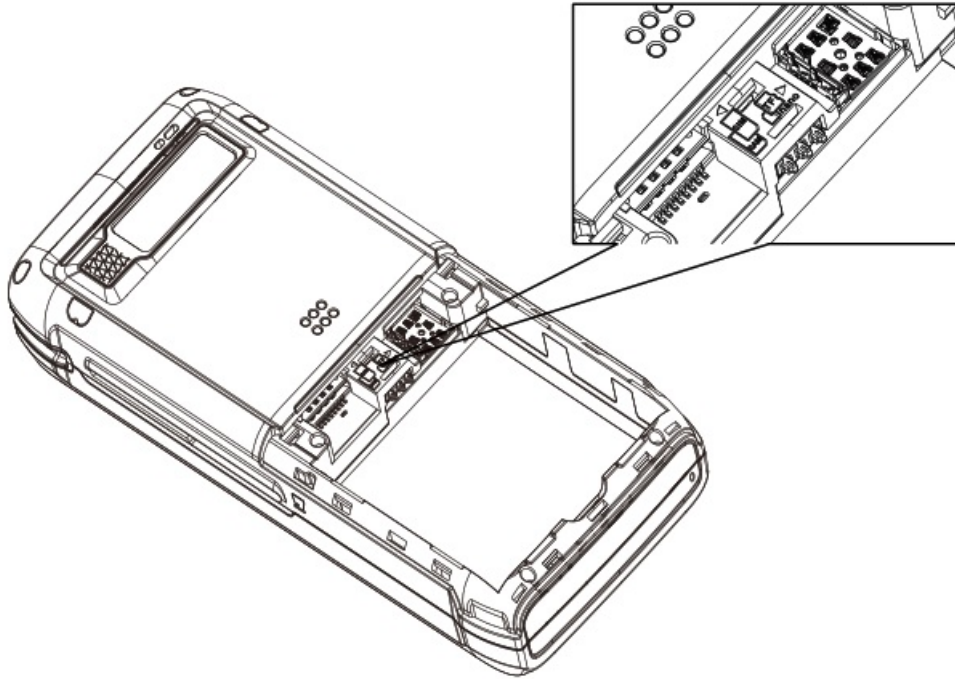
Get to Know the Product

1. Magnetic stripe card slot	7. Status indicator
2. Front camera (optional)	8. IC card slot
3. TYPE-C interface	9. Speaker
4. Power key	10. Rear camera
5. Volume key	11. Flash
6. Microphone	12. Battery compartment

Install SIM/SAM/TF Card

IMPORTANT: Make sure the device is powered off.

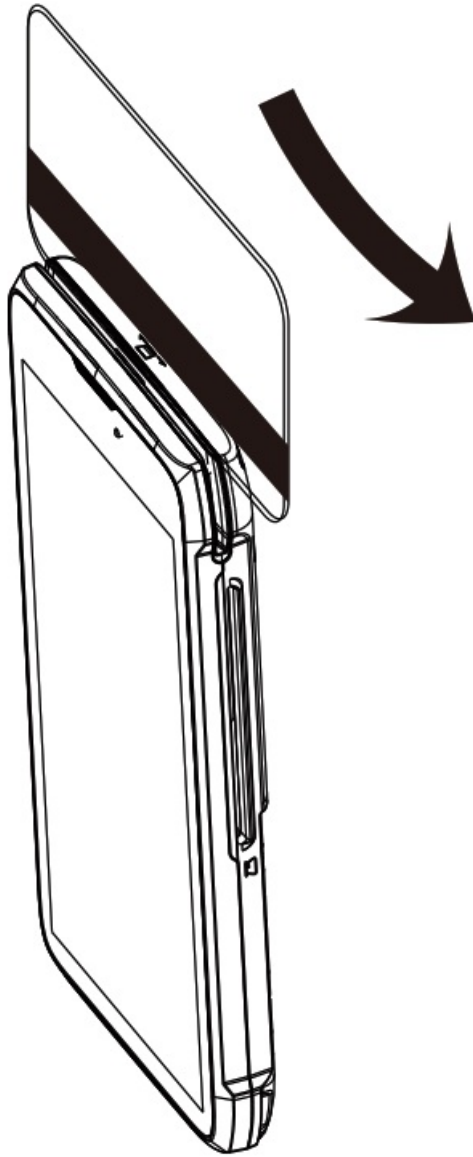
1. Lay the device flat with the reverse side facing up.
2. Open the back cover and remove the battery.
3. Please insert the SIM/SAM/TF card in the direction shown in the figure.
4. Install the battery and close the back cover.



Instructions for Operation

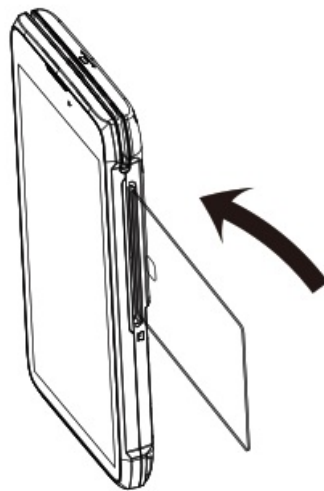
How to swipe magnetic stripe card

1. Insert the magnetic stripe card into the card slot;
2. When swiping the card, please face the magnetic stripe of the card towards the display screen, and the swiping action should be stable and uniform;
3. When swiping the card, do not lift the magnetic card halfway.



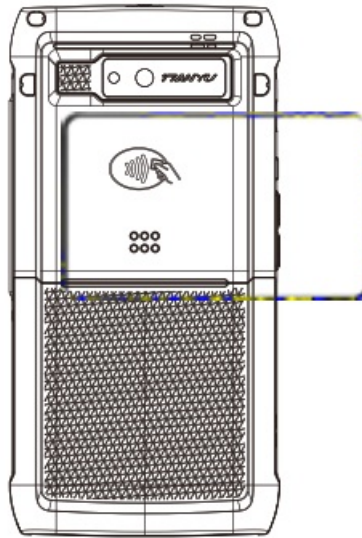
How to insert IC card

When inserting the card, please keep the chip facing upwards.



How to swipe contactless card

1. The contactless card sensing area is located on the printer cover;
2. When using, keep the card close to the contactless card sensing area.



Copyright Statement

The author of this Manual is Tianyu Information Industry Co., Ltd. The author enjoys and reserves all exclusive copyright rights in accordance with the Copyright Law of the People's Republic of China. Without the prior consent of the author, this Manual shall not be reproduced, added or deleted, abridged, extracted, reprinted or imitated in part or in whole.

The content of this Manual is only to explain the method to use the product produced by the author. Regarding the content of this Manual, the author, i.e., Tianfu Information Industry Co., Ltd., does not assume any express or implied warranty or guarantee responsibility.

Warning:

Tianyu Information Industry Co., Ltd. shall not be held liable for any loss or problem caused by options or consumables which are not produced or approved by the Company. Without the consent of Tianfu Information

Disclaimer

Due to product updates, some parts of this document may not match the product, so please refer to the actual product. The right to interpret this document belongs to Tianfu Information Industry Co., Ltd., which reserves the right to modify this Manual without prior notice.

Warranty Card

Product Model:.....

Date of Sale:.....

Warranty Clause:.....

1. The Company will provide you with quality services.
2. Damage to the device caused by the user's unauthorized disassembly or modification will not be entitled to free warranty.
3. Please keep this card properly, which is the basis for warranty.

Certificate of Approval

This product has passed the inspection and is allowed to be delivered.

Inspector:.....

Date of Delivery:.....

FCC Statement

This device complies with part 15 of the FCC rules. Operation is subject to the following two conditions:

1. this device may not cause harmful interference, and
2. this device must accept any interference received, including interference that may cause undesired operation.

Caution: Changes or modifications not expressly approved by the party responsible for compliance could void the user's authority to operate the equipment.

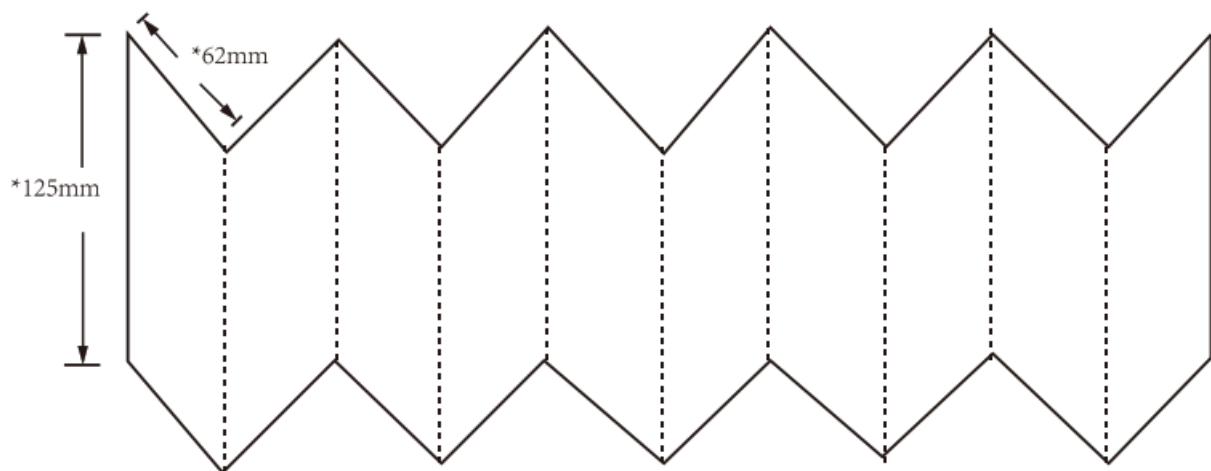
NOTE: This equipment has been tested and found to comply with the limits for a Class B digital device, pursuant to part 15 of the FCC Rules. These limits are designed to provide reasonable protection against harmful interference in a residential installation. This equipment generates uses and can radiate radio frequency energy and, if not installed and used in accordance with the instructions, may cause harmful interference to radio communications. However, there is no guarantee that interference will not occur in a particular installation. If this equipment does cause harmful interference to radio or television reception, which can be determined by turning the equipment off and on, the user is encouraged to try to correct the interference by one or more of the following measures:

- Reorient or relocate the receiving antenna.
- Increase the separation between the equipment and receiver.
- Connect the equipment into an outlet on a circuit different from that to which the receiver is connected.
- Consult the dealer or an experienced radio/TV technician for help important announcement

Specific Absorption Rate (SAR) information:

Smart POS Terminal meets the government's requirements for exposure to radio waves.

The guidelines are based on standards that were developed by independent scientific organizations through periodic and thorough evaluation of scientific studies. The standards include a substantial safety margin designed to assure the safety of all persons regardless of age or health. FCC RF Exposure Information and Statement the SAR limit of USA (FCC) is 1.6 W/kg averaged over one gram of tissue. Device types: Smart POS Terminal has also been tested against this SAR limit. This device was tested for typical body-worn operations with the back of the Smart POS Terminal kept 10mm from the body. To maintain compliance with FCC RF exposure requirements, use accessories that maintain an 10mm separation distance between the user's body and the back of the Smart POS Terminal. The use of belt clips, holsters and similar accessories should not contain metallic components in its assembly. The use of accessories that do not satisfy these requirements may not comply with FCC RF exposure requirements, and should be avoided.



File No.	1QA020-P10	Model	P10	Design / Prepare by
PN.	S450800000044	Scale	1:01	Review by
Description				Approved by



Date: 2022/10/27

Documents / Resources



[SIM Technology P10 Smart POS Terminal](#) [pdf] User Manual
P10, 2ALKI-P10, 2ALKIP10, P10 Smart POS Terminal, Smart POS Terminal, POS Terminal, Terminal

References

- [User Manual](#)