



# SIM LAB XB-1 Mounting Bracket Instruction Manual

[Home](#) » [SIM-LAB](#) » SIM LAB XB-1 Mounting Bracket Instruction Manual 

## Contents

- [1 SIM LAB XB-1 Mounting Bracket](#)
- [2 INSTRUCTION MANUAL](#)
- [3 Product Information](#)
- [4 Product Usage Instructions](#)
- [5 INSTALLATION](#)
- [6 Documents / Resources](#)
  - [6.1 References](#)
- [7 Related Posts](#)



**SIM LAB XB-1 Mounting Bracket**



## INSTRUCTION MANUAL

XB-1 Mounting Bracket

VERSION 1.0

## Product Information

The XB-1 Mounting Bracket is a product designed by Sim-Lab. It is a bracket that allows you to mount your XB-1 Loadcell Handbrake next to an existing shifter (mount). This bracket enables you to use your sequential or h-shifter simultaneously with the XB-1 Loadcell Handbrake, providing you with the ultimate rally or rallycross experience.

## Product Usage Instructions

1. Before starting the assembly process, ensure that all the parts listed in the bill of materials (page 8) are delivered.
2. Follow the diagram provided to insert slot nuts into the slots on the bracket. Use a smaller Hex wrench to help position the Slot-Nuts if needed.
3. Use the following tools for assembly:
  - 5/6MM hex wrench
  - 10MM hex wrench
4. Assemble the parts in the following order:
  - A1 Bracket Top (1x)
  - A2 Bracket Front (1x)
  - A3 Bracket Rear (1x)
  - M6 X 20 Bolt DIN 912 (2x)
  - M6 X 16 Bolt DIN 912 (4x)
  - M6 X 16 Countersunk Bolt DIN 7991 (4x)
  - M6 Washer DIN 125-A (12x)
  - M6 Lock-Nut (6x)
  - Slot-Nut M6 (4x)
5. The maximum angle at which the handbrake can be positioned is approximately 20 degrees.
6. Use the two shorter slots to ensure clearance for a larger h-shifter. If you have any questions or need further assistance with the assembly or the manual itself, please contact our support department at [support@sim-lab.eu](mailto:support@sim-lab.eu). Alternatively, you can join our Discord server at [www.sim-lab.eu/discord](https://www.sim-lab.eu/discord), where experienced Sim-Lab customers may be able to assist you.

**Note:** Spare materials are included in the hardware kit, so don't worry if you have leftovers.

**Disclaimer:** Please consider the environment before printing this manual. If you choose to print, ensure that it is done at 100% scale without borders for optimal results.

## Product page on the Sim-Lab website

## BEFORE YOU START

Thank you for purchasing this Sim-Lab product! On the following pages, you will find detailed instructions on assembly. This requires only a set of simple tools and some of your time. Please check the bill of materials before starting (page 8) and make sure all the parts are delivered. This product only consist of a bracket to be able mount your XB-1 Loadcell Handbrake next to an existing shifter (mount). Using this bracket, you can use your sequential

or h-shifter simultaneously with the XB-1 Loadcell Handbrake for the ultimate rally or rallycross experience with all controls you need, where you need them.

### Inserting Slot-Nuts

You got excited, finished the build, put the caps on, but forgot to install one element. Do not worry. It happens to everyone. In this diagram, you can see how to insert a Slot-Nut directly into the slot from the side. You can also use one of your smaller Hex wrenches to help wiggle the Slot-Nut in place



### Tools needed

Tools needed:

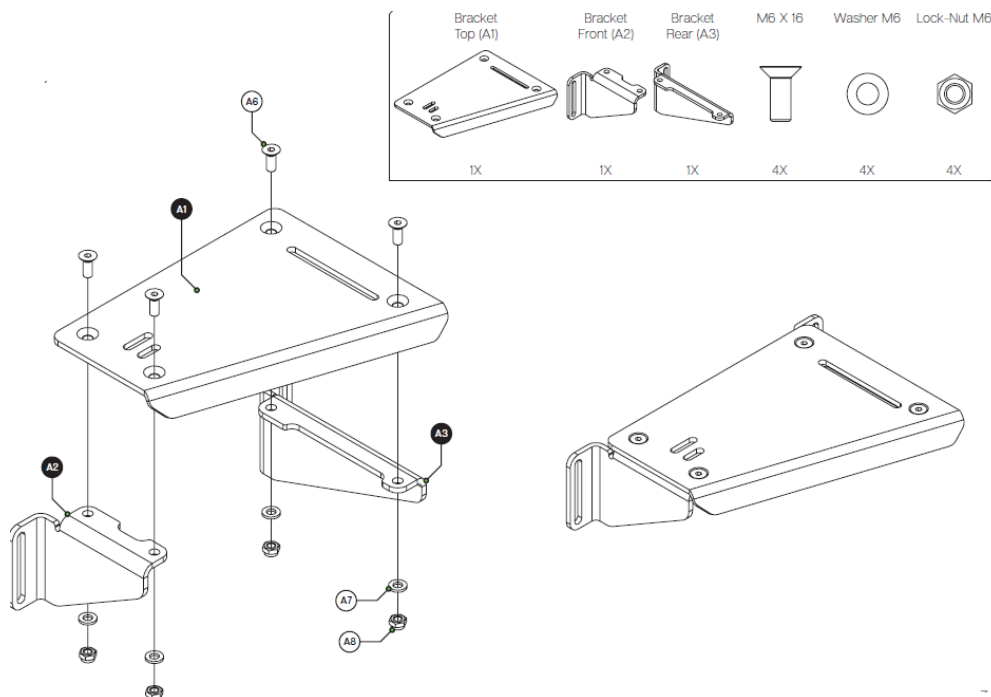


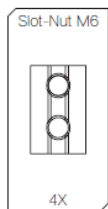
5/6MM



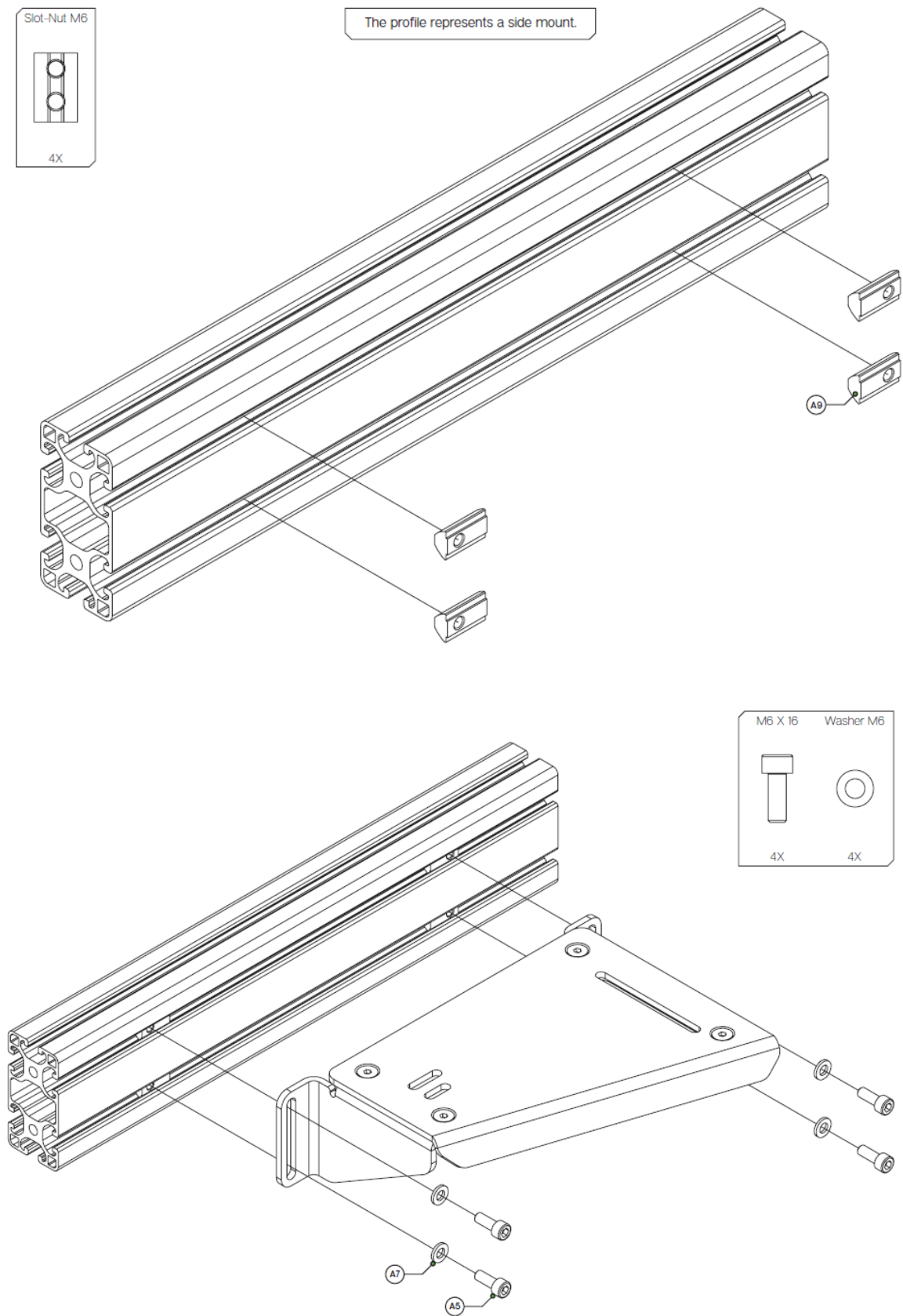
10MM

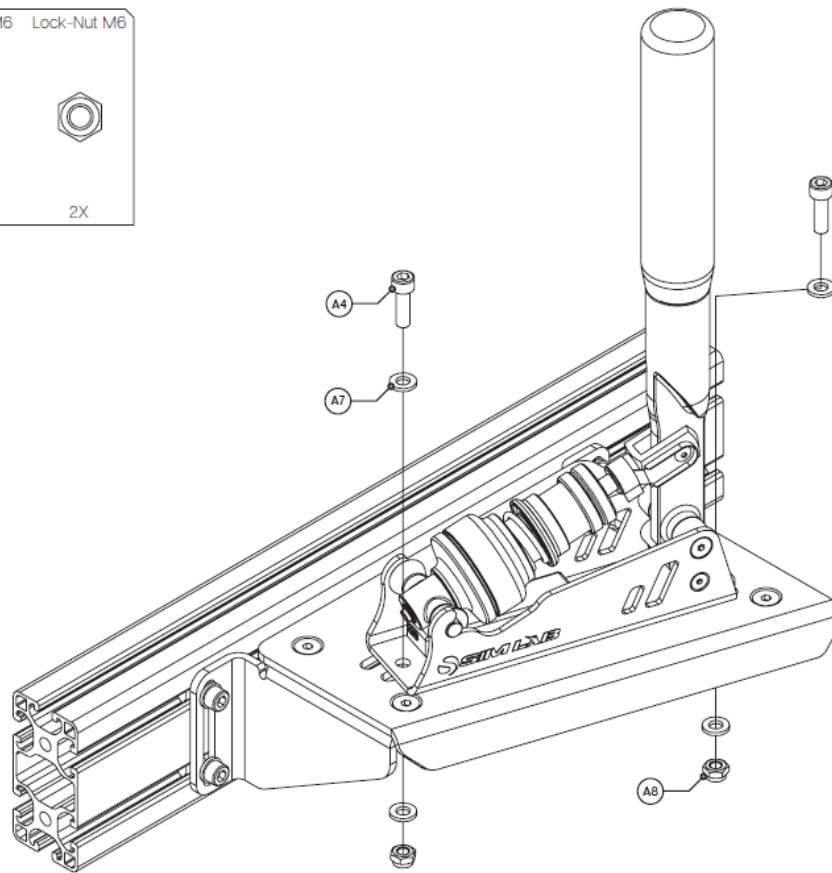
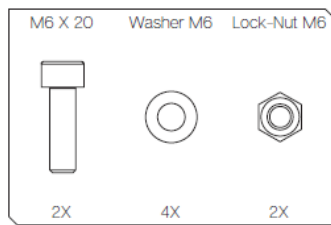
## INSTALLATION



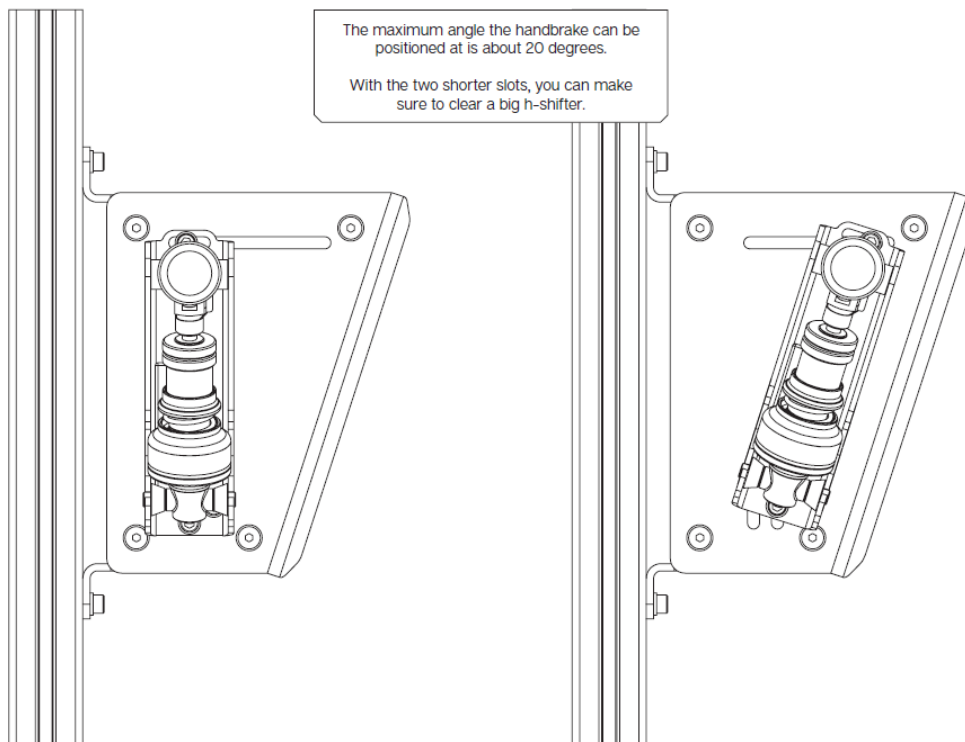


The profile represents a side mount.






The maximum angle the handbrake can be positioned at is about 20 degrees. With the two shorter slots, you can make sure to clear a big h-shifter



XB-1 Mounting Bracket HARDWARE KIT			
#	Part	QTY	Note
A1	Bracket Top	1	
A2	Bracket Front	1	
A3	Bracket Rear	1	
A4	Bolt M6 X 20 DIN 912	2	
A5	Bolt M6 X 16 DIN 912	4	
A6	Bolt M6 X 16 DIN 7991	4	Countersunk
A7	Washer M6 DIN 125-A	12	
A8	Lock-Nut M6	6	
A9	Slot-Nut M6	4	
Disclaimer: for some entries on this list, we supply more than required as spare materials. Don't worry if you have some leftovers, this is intentional.			

If you still have some questions regarding assembly of this product or about the manual itself, please refer to our support department. They can be reached at [support@sim-lab.eu](mailto:support@sim-lab.eu). Alternatively, we now have a Discord server where there are quite some experienced Sim-Lab customers hanging out. They might just help you along if you ask them nicely 😊 [www.sim-lab.eu/discord](https://www.sim-lab.eu/discord) If you feel like printing this manual, please consider the environment before doing so. For the best results, make sure you print at 100% scale without borders. Product page on the Sim-Lab website:

## Documents / Resources

	<a href="#">SIM LAB XB-1 Mounting Bracket</a> [pdf] Instruction Manual XB-1, XB-1 Mounting Bracket, Mounting Bracket, Bracket
-------------------------------------------------------------------------------------	----------------------------------------------------------------------------------------------------------------------------------

## References

- [Sim-Lab](#)
- [XB-1 Handbrake angled mounting bracket](#)