



## SIM LAB SD43 DASH LED Instruction Manual

[Home](#) » [SIM-LAB](#) » SIM LAB SD43 DASH LED Instruction Manual 

### Contents

- 1 SIM LAB SD43 DASH LED
- 2 Product Information
- 3 Product Usage Instructions
- 4 BEFORE YOU START
- 5 Features
- 6 Mounting the dash
- 7 Installing drivers
- 8 SimHub installation
- 9 SimHub configuration
- 10 Bill of materials
- 11 Documents / Resources
  - 11.1 References



### SIM LAB SD43 DASH LED



## Product Information

**Product Name:** Dash SD43 LED

**Version:** 1.01

**Last Updated:** 23-06-2022

### Features:

- 4.3" 480×272 Pixel color TFT LCD
- USBD 480
- 23 full RGB LEDs
- Up to 60 FPS
- 16 bit Colors
- USB Powered
- Multiple software options
- Drivers included

## Product Usage Instructions

### Mounting the Dash:

To mount the dash, follow the instructions below:

1. For Fanatec base mounting:
  - Use the included mounting plate.
  - Secure the dash to the Fanatec base using 2 bolts (A5).
2. For servo motor mount mounting:
  - Use the existing bolts that hold the servo motor in place.
  - If required, slide the adapter plate over the exposed thread.
  - Tighten the bolts against the plate.

### Installing Drivers:

To install the display drivers, follow the steps below:

1. Download the drivers from the product page.
2. Run the downloaded package.
3. Press 'Install'.
4. Wait for the loading bar to be full and say 'Completed'.
5. Press 'Next'.
6. Press 'Close'.

### SimHub Installation:

To control the LEDs of the dash using SimHub, follow the steps below:

1. Download the latest version of SimHub from <https://simhubdash.com>
2. Unzip the downloaded file.
3. Run the setup file.

4. Specify the location to install the software.
5. Press 'Next' and make sure all options are checked.
6. Press 'Install' and wait for the installation to complete.
7. Press 'Finish'.

### **SimHub Configuration**

To enable the display with SimHub, follow the steps below:

1. If not already done, connect the dash to your computer using the supplied USB cable.
2. Open SimHub and press 'Dash Studio' (1).
3. Press 'USBD480' (2).
4. Hover over the dashboard you want to display and select 'Start'.
5. In the 'Screen #1' section, check 'Enable display' (3). The 'Connected' indicator will appear on its right-hand side.
6. Go back to 'Dashboards' (4).
7. A popup will appear, select 'On USBD480 screen' (6). The display will now boot using the selected dash.

**Note:** Importing or changing dash profiles is not covered in this document. For more information on that topic, please refer to the SimHub documentation.

### **Controlling the LEDs:**

A sample LED profile can be downloaded from the product page.

## **BEFORE YOU START**

Thank you for your purchase. In this manual we will provide you with the means to get started using your new dash!



### **Dash SD43 LED**

#### **Features**

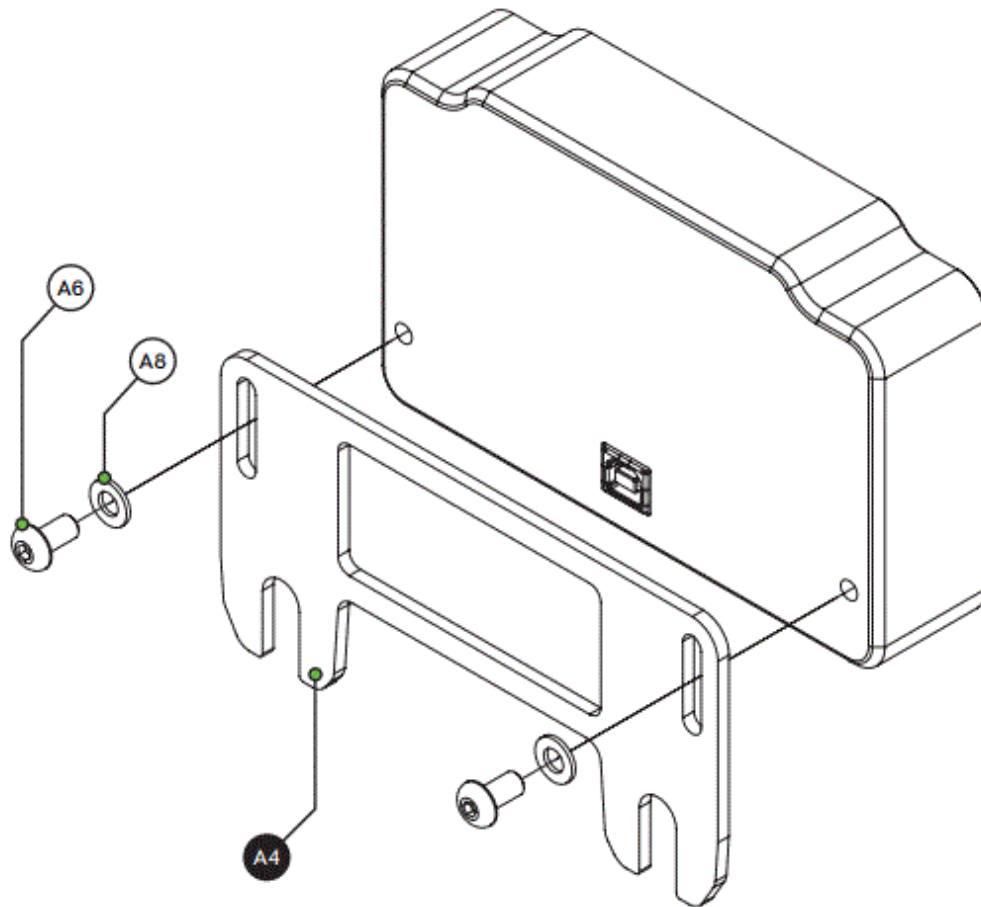
- 4.3" 480×272 Pixel color TFT LCD USBD 480
- 23 full RGB leds

- Up to 60 FPS
- 16 bit Colors
- USB Powered
- Multiple software options
- Drivers included

Mounting the dash is very easy thanks to the included mounting plate. With just 2 bolts (A5) you can mount it directly to your Fanatec base. For mounting onto a servo motor mount you can use the existing bolts with which the servo is mounted to a front mount or servo motor holder.

## Mounting the dash

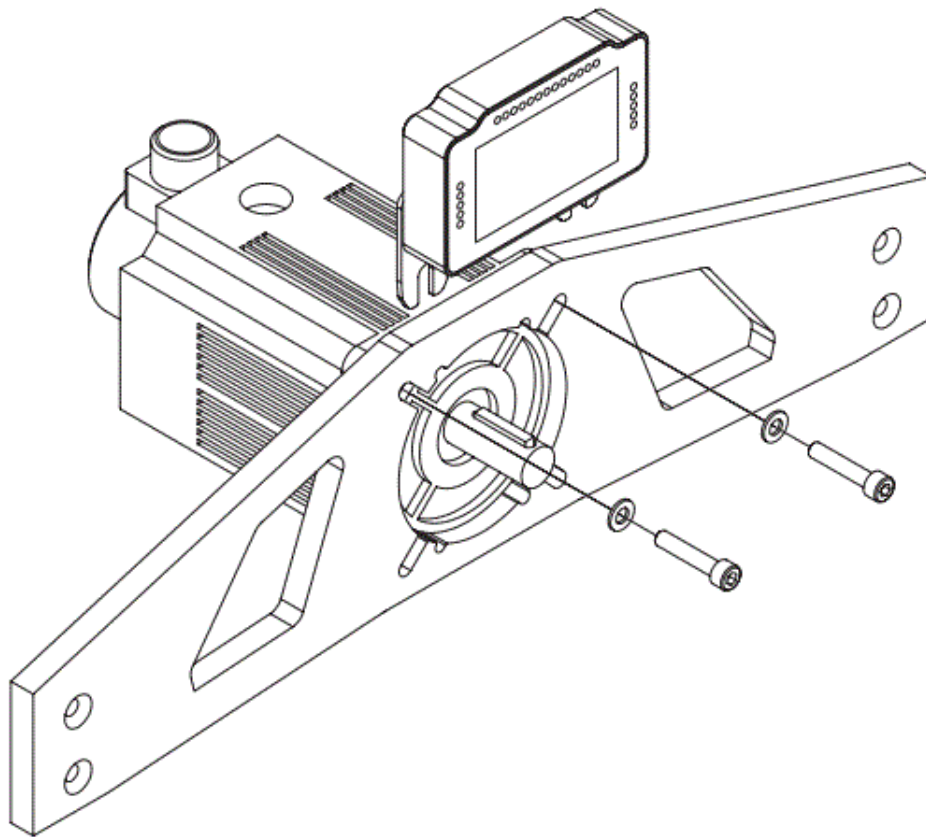
To be able to mount the dash on the hardware of your choice, we provide adapter plates. Which one you have will depend on your purchase and may differ from the following one we show.



### OSW/Simucube/VRS

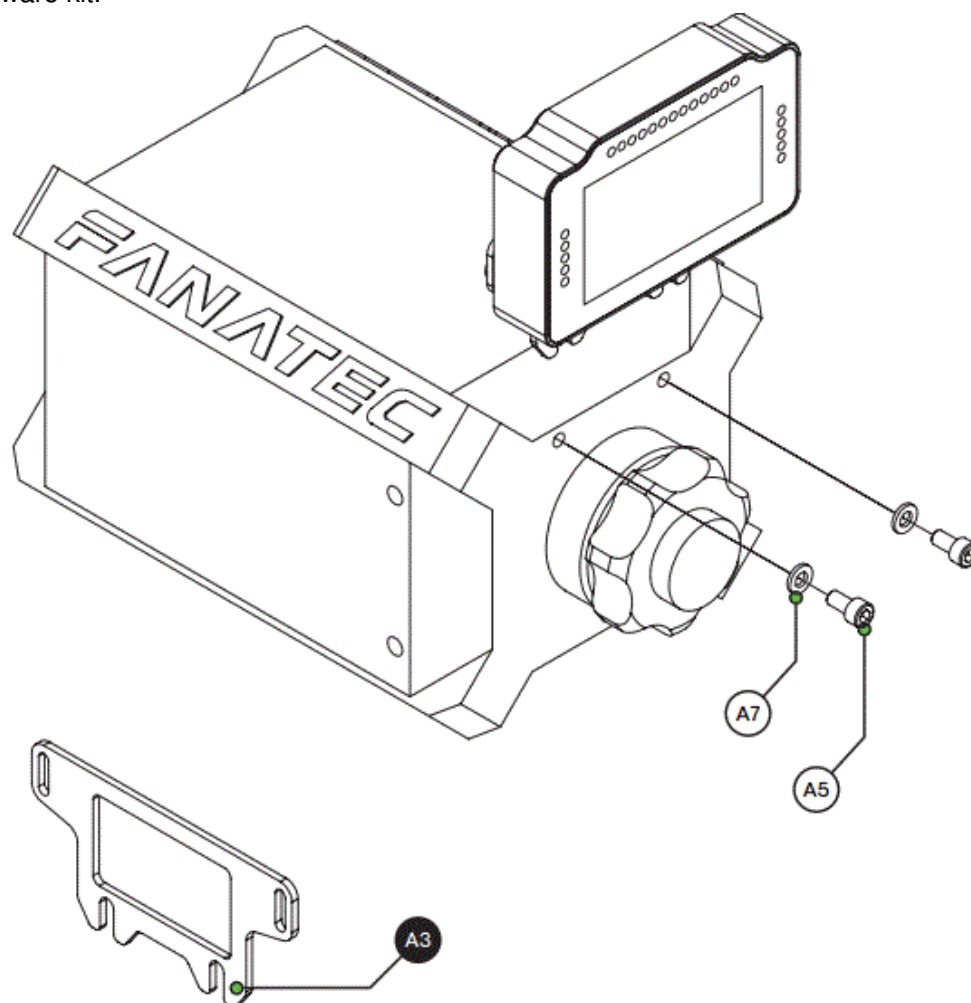
Loosen the existing upper bolts which hold the motor in place. Simply slide the adapter plate over the exposed thread and tighten the bolts against the plate.

**Note:** the adapter plate for a Simucube Ultimate is sold separately.



#### **Fanatec DD1/DD2/CSL**

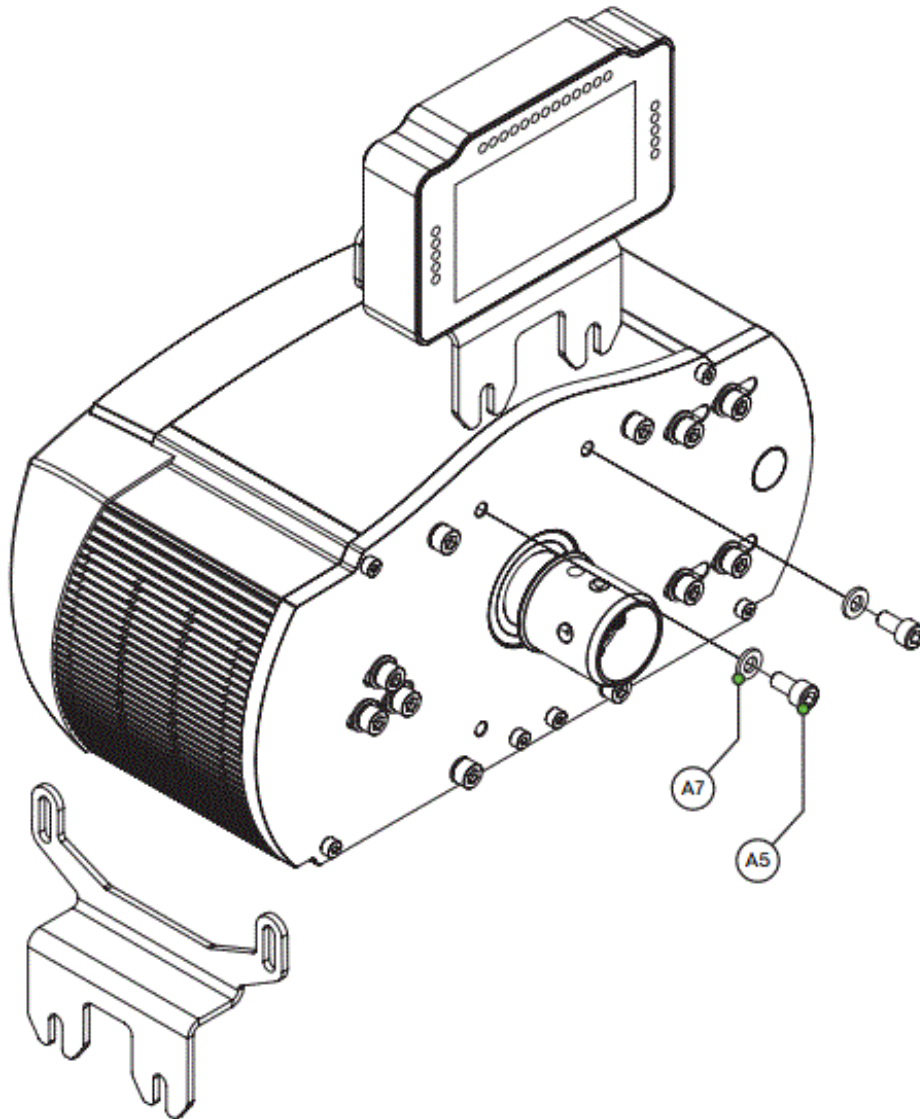
Locate the accessory mounting holes on your Fanatec hardware and use the two bolts (A4) and washers (A6) from our supplied hardware kit.



### Fanatec CSW

Although the regular Fanatec adapter plate can be fitted, we prefer this one because it offsets the dash from the steering wheel.

**Note:** This plate is sold separately.



### Installing drivers

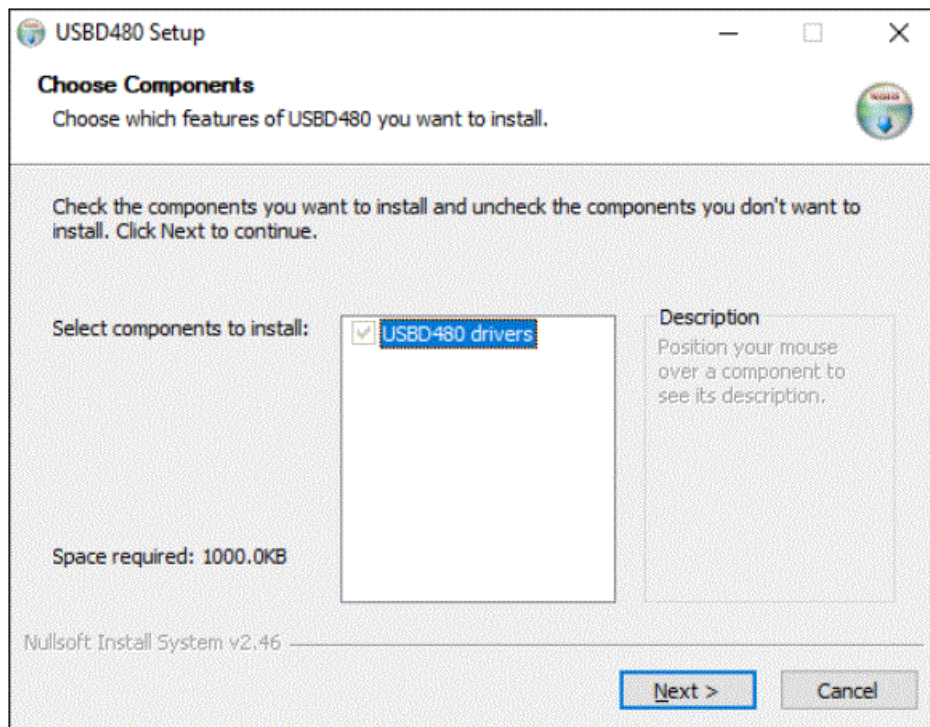
To make the display part of the dash functional, specific drivers are needed. Drivers can be downloaded from the product page.

> [download drivers](#) <

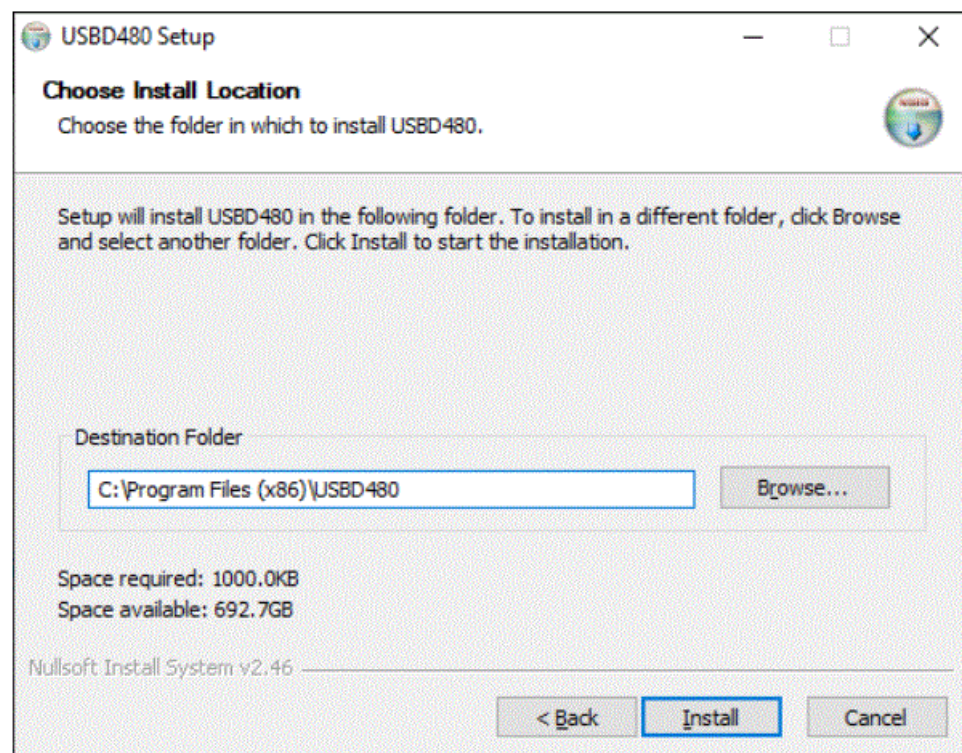
### Installation

To install the display drivers, run the downloaded package and follow these steps:



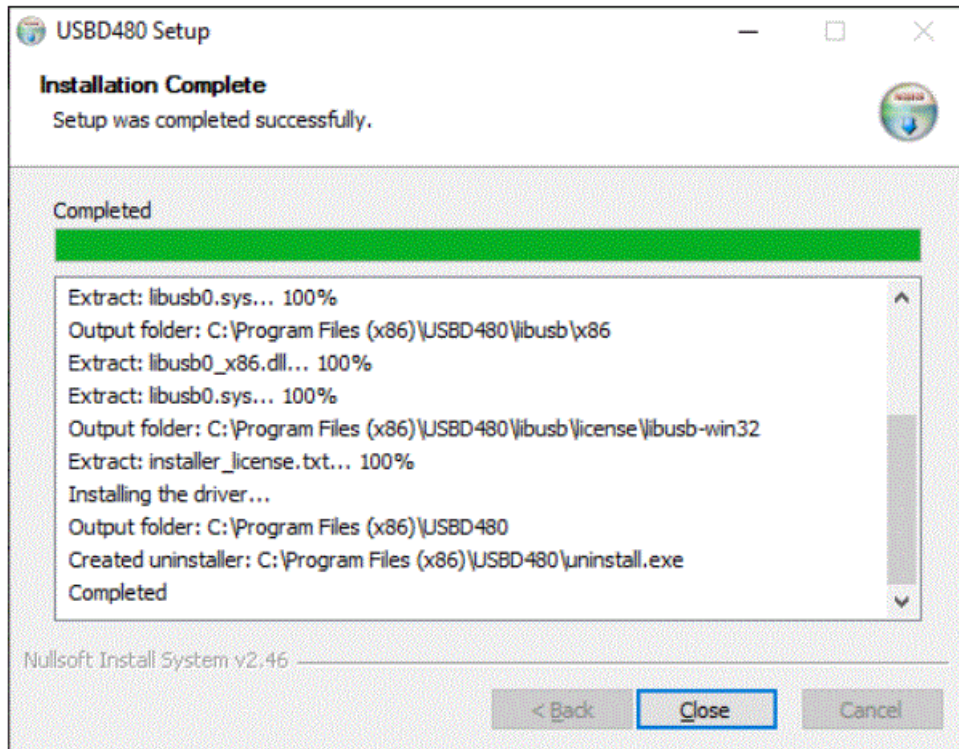


- Press 'Next'.
- Specify the location where to install the drivers: Press 'Close'. Installation of the display drivers is now done.



- Press 'Install'.
- After the loading bar is full and says 'Completed':





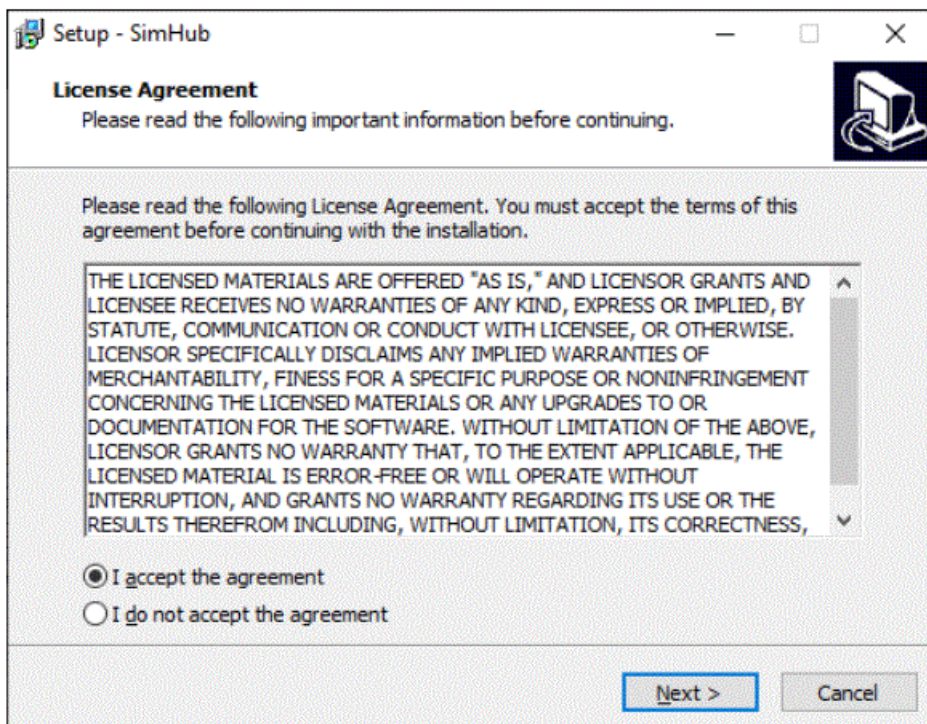
- Press 'Close'. Installation of the display drivers is now done.

## SimHub installation

To control the LEDs of the dash, Simhub can be used. Download the latest version of Simhub from <https://simhubdash.com>

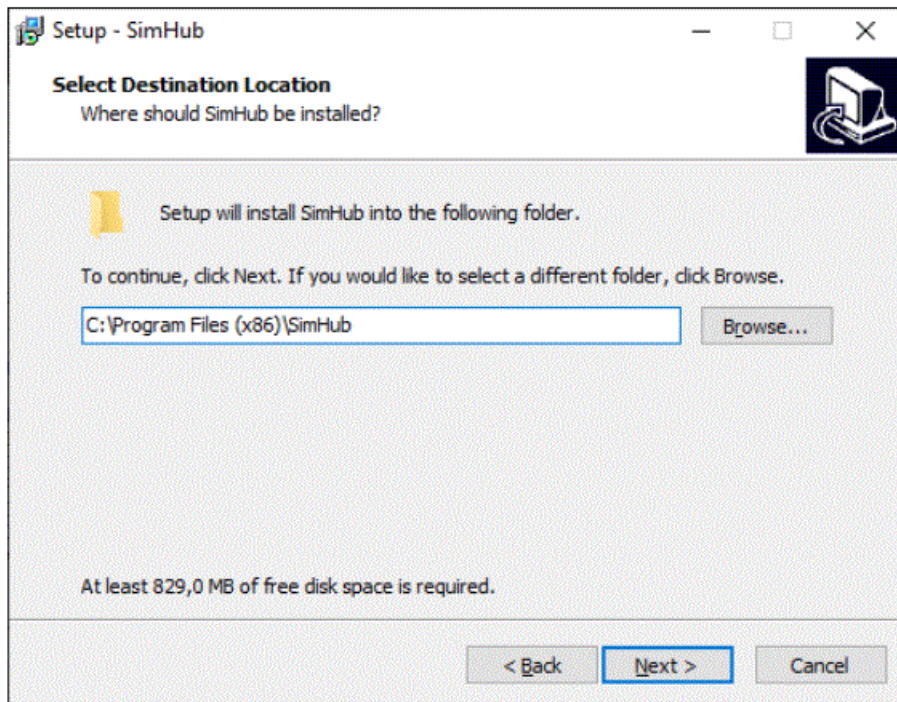
### Installation

Unzip the downloaded file and run the setup file:

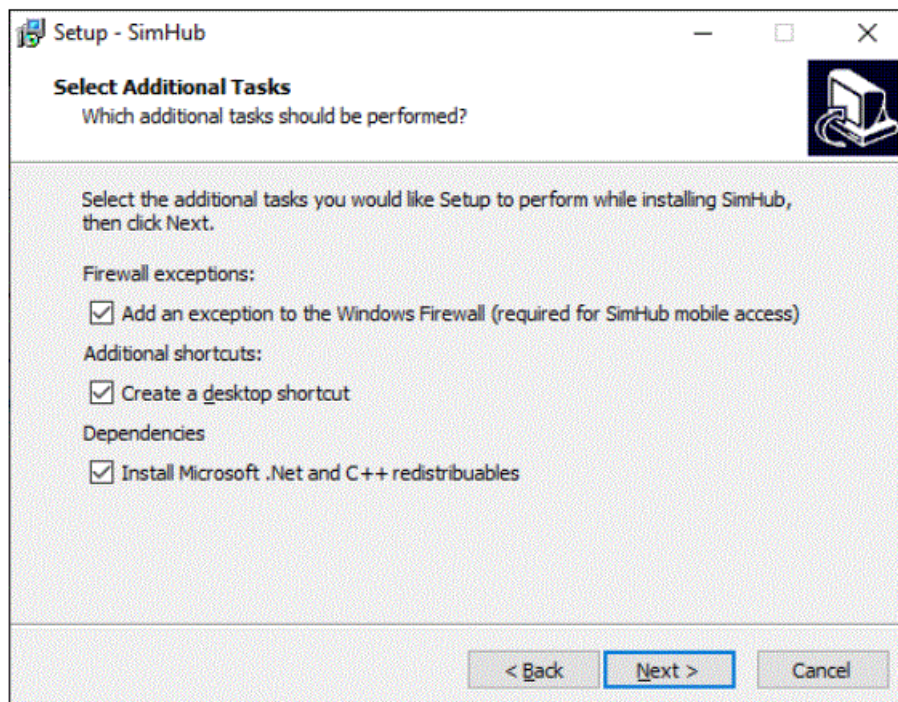


- Press 'Next'.
- Specify the location where to install the software:

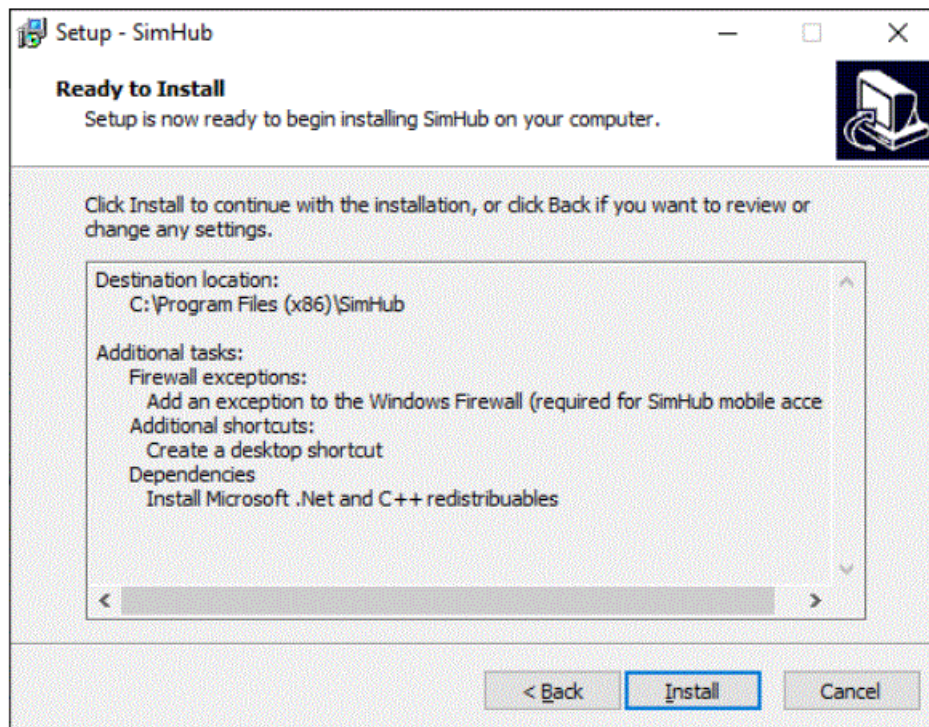




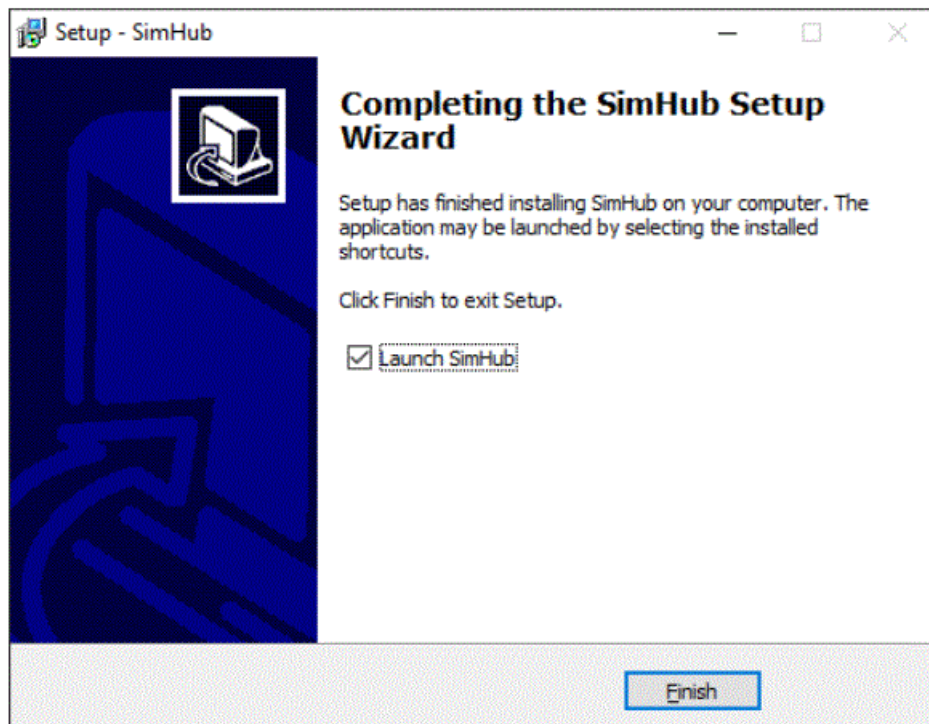
- Press 'Next'.
- Make sure all options are checked:



- Press 'Next'.



- Press 'Install'.



- After installation press 'Finish'.

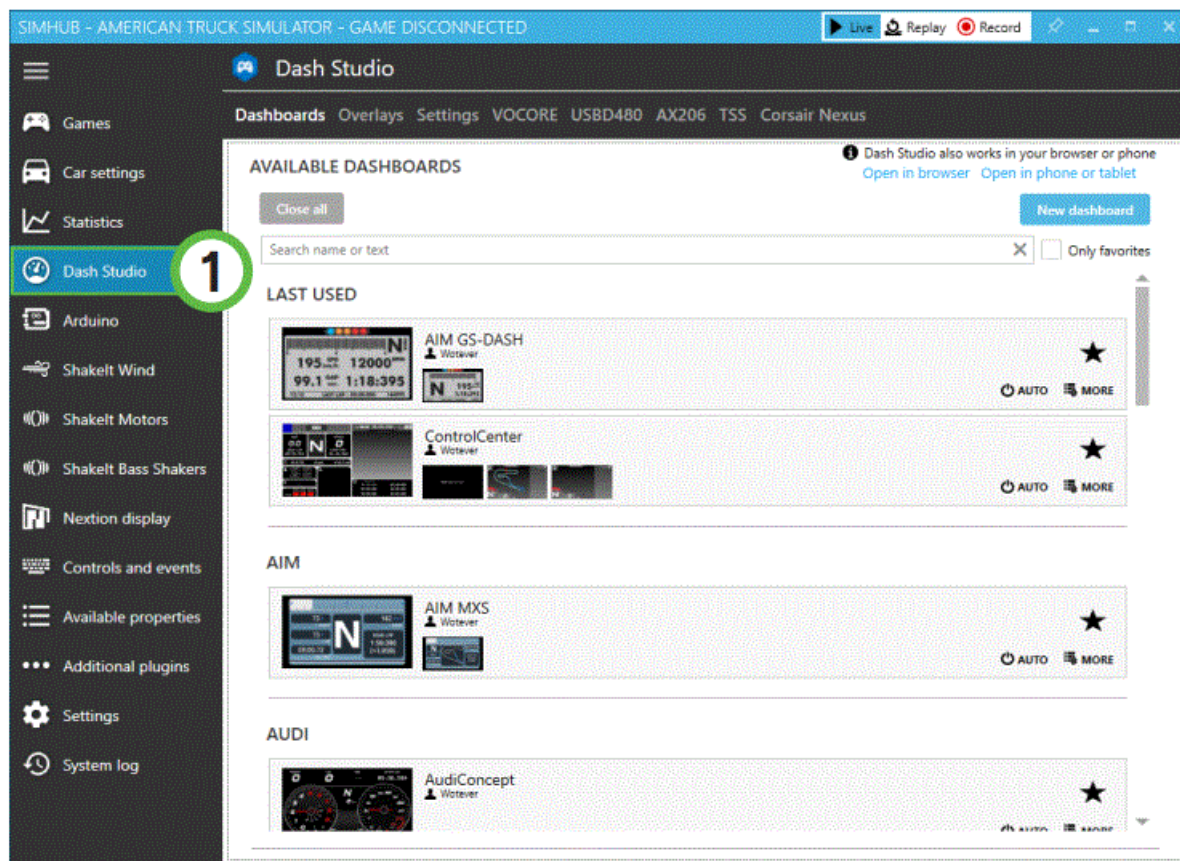
## SimHub configuration

- If you haven't connected the dash with the supplied USB cable to your computer, this is required from this point forward.

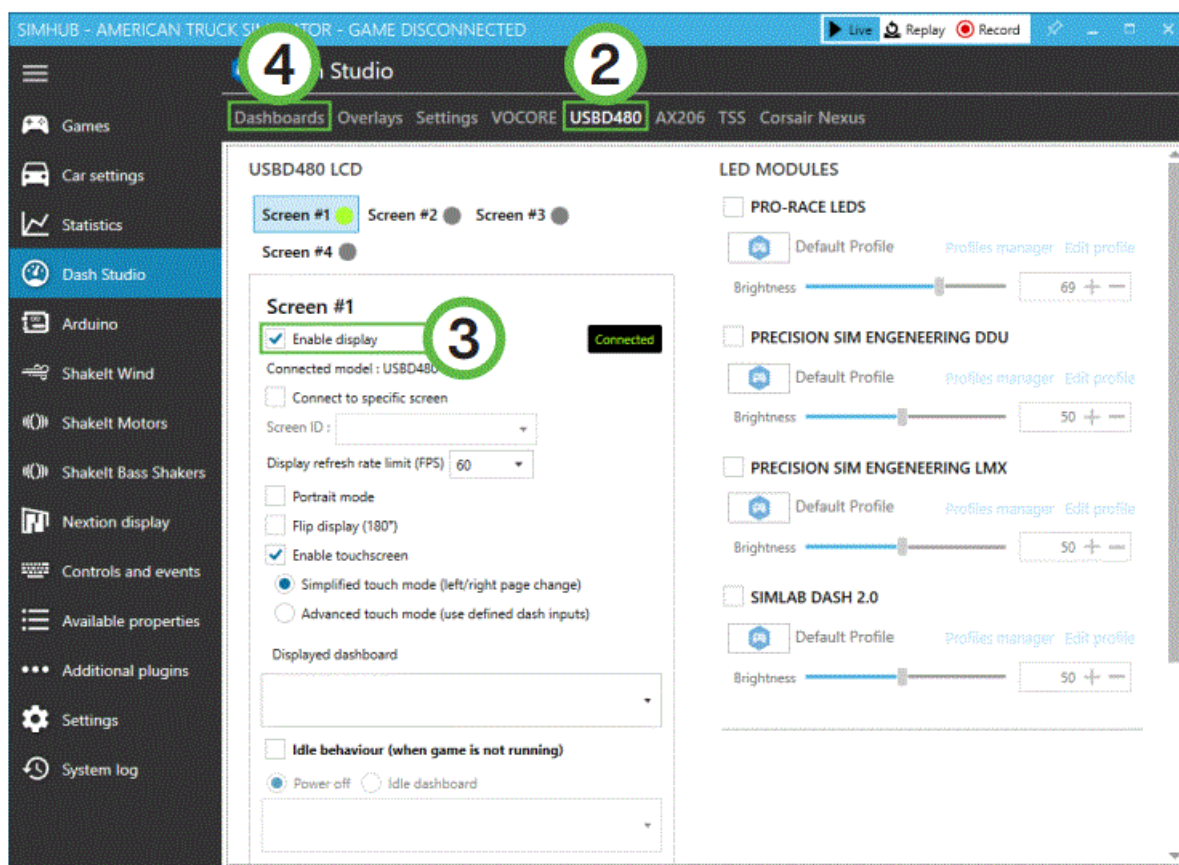
## Activation

To use the display with SimHub, it needs to be enabled:

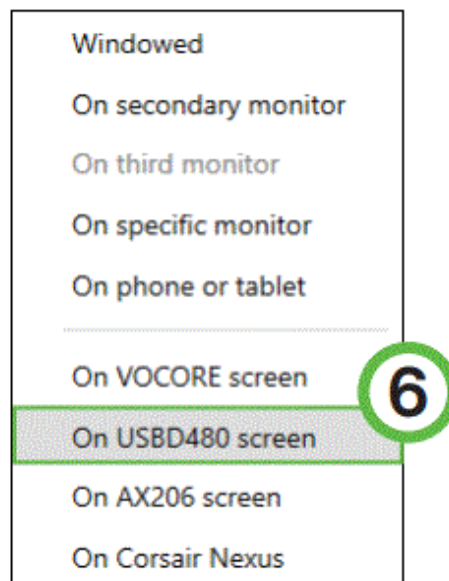
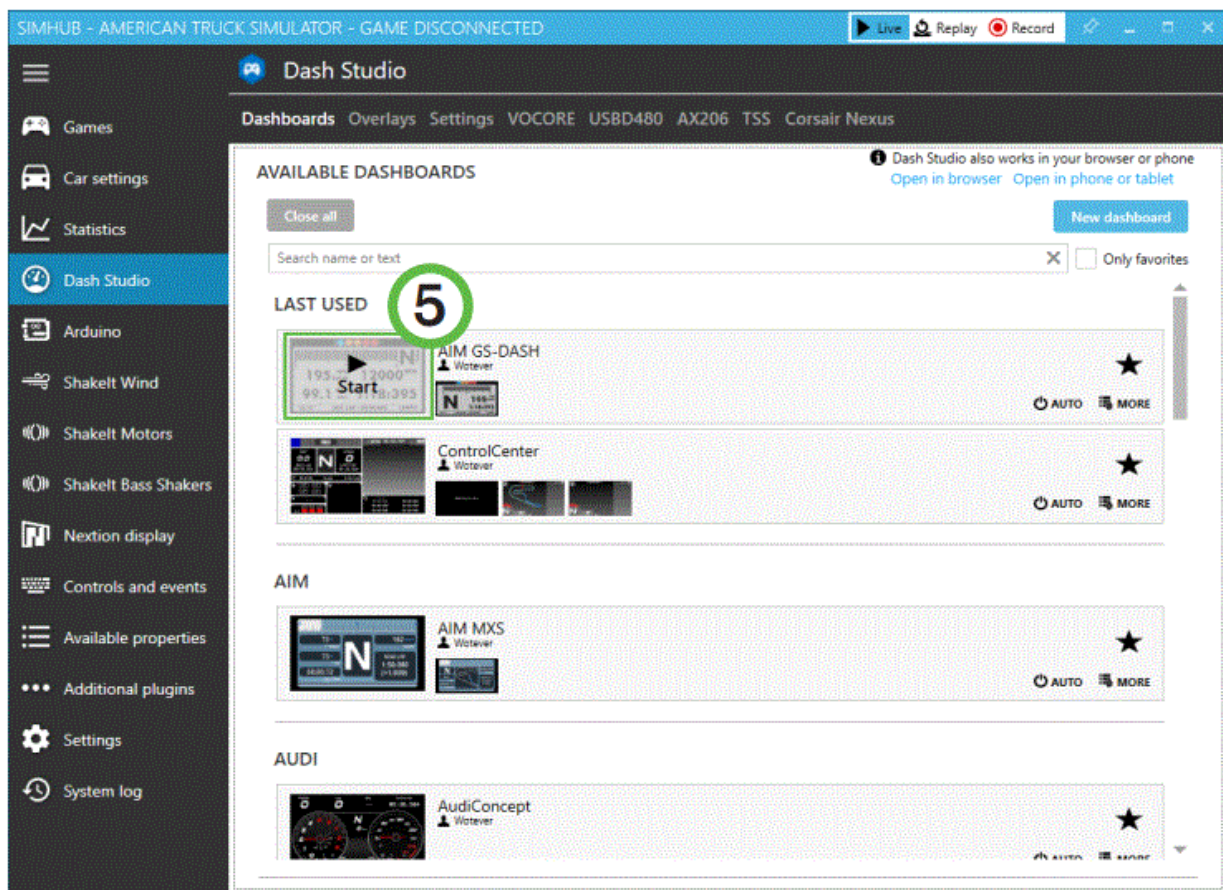




- Press 'Dash Studio' (1).
- Press 'USBD480' (2).



- In the 'Screen #1' section, check 'Enable display' (3). The 'Connected' indicator will appear on its right hand side. When the screen is connected, go back to 'Dashboards' (4).
- Hover over the dashboard you want to display and select 'Start'.



- A popup will appear, select 'On USB480 screen' (6).
- The display will now boot using the selected dash.

**NOTE:** Importing or changing dash profiles is not part of this document. For more information on that topic, please see the SimHub documentation.

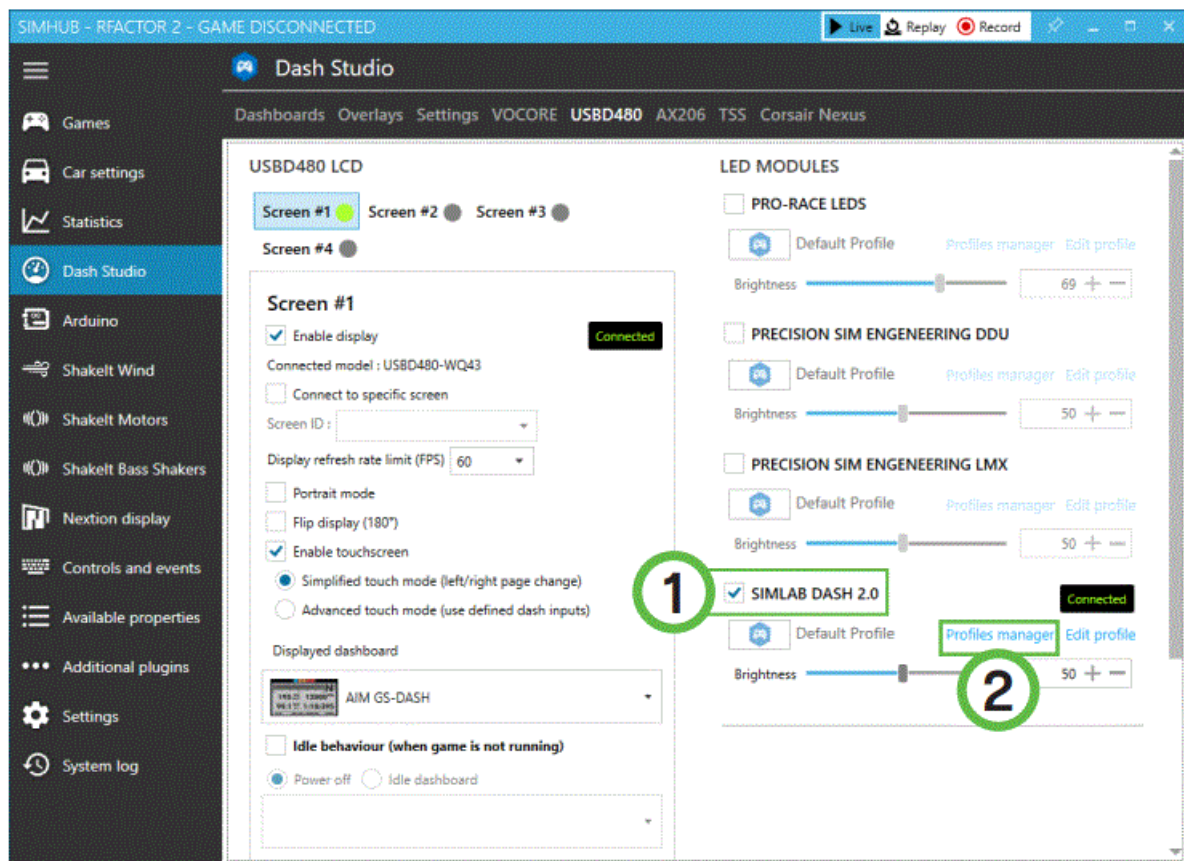
### Controlling the LEDs

A sample LED profile can be downloaded from the product page.

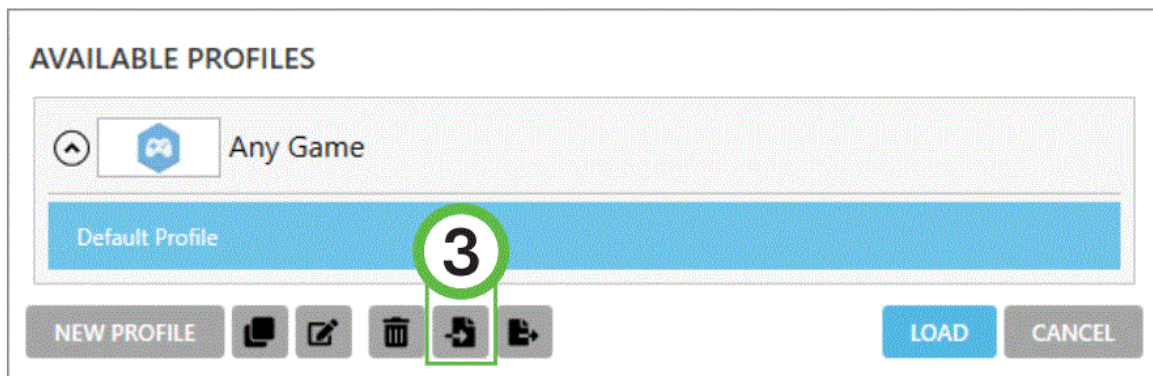
- >download led profile <

To enable or adjust LEDs, navigate back to the 'USB480' page in 'Dash Studio'. You may also refer to Pages 5/6 of this document.





- Check the 'SIMLAB DASH 2.0' module (1). A 'Connected' indicator will appear to confirm the connection. Press 'Profiles manager' (2) to import the profile.
- Click on the import profile icon (3).



- Browse to the location where you stored the LED profile, select it and press 'Open'.

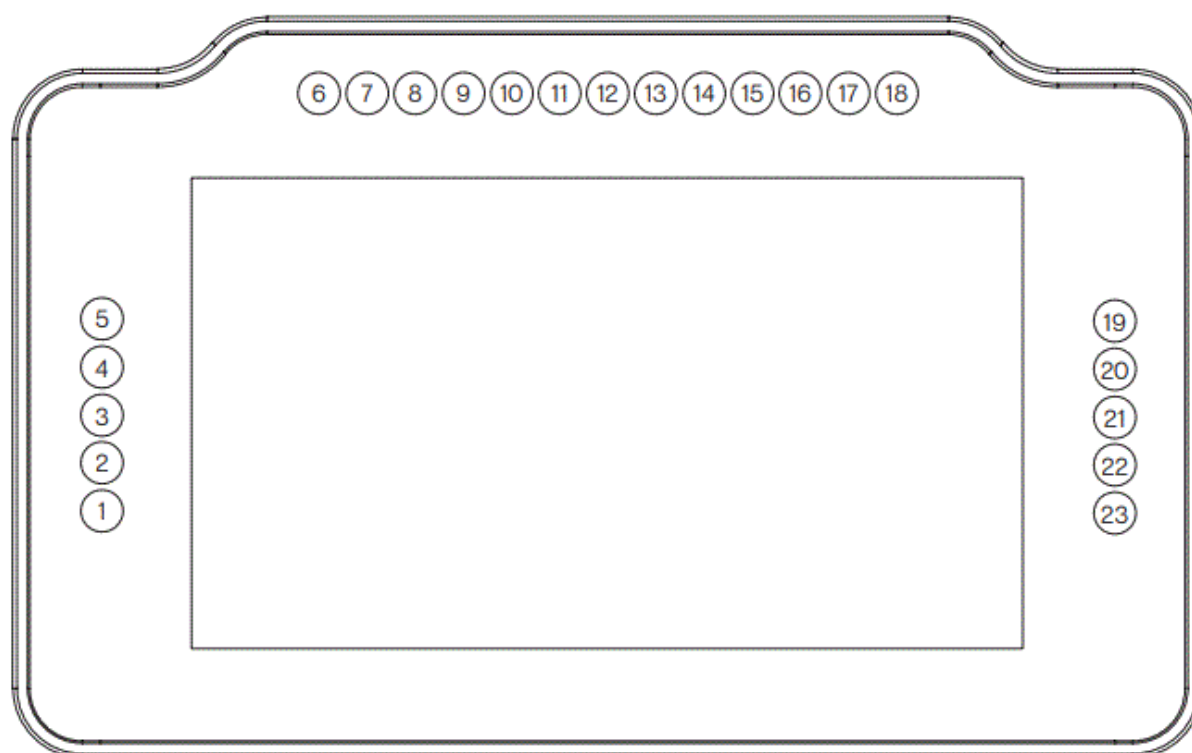


- The load the profile, make sure it is selected (SD43-LED) and press 'Load' (4).

## Bill of materials

### Changing the LEDs' functions.

To change the LED effects you need to know the LED numbering of the dash. The numbering starts at the bottom left and continues clockwise to the bottom right. See the image below for reference:



IN THE BOX			
#	Part	QTY	Note
A1	Dash SD43-LED	1	
A2	USB B Cable	1	
A3	Adapter plate Fanatec	1	Fits all Fanatec hardware.
A4	Adapter OSW/SC/VRS	1	
A5	Bolt M6 X 10 DIN 912	2	Used with Fanatec.
A6	Bolt M5 X 10 DIN 7380	4	To fit adapter plate to dash.
A7	Washer M6 DIN 125-A	4	
A8	Washer M5 DIN 125-A	4	
<i>Disclaimer: for some entries on this list, we supply more than required as spare materials. Don't worry if you have some leftovers, this is intentional.</i>			

- There should be enough info in the sample profile to be able to adjust to your liking. Just keep in mind, that you mostly need two values. The number of the LEDs where you want an effect to start, and the amount of LEDs to use for said effect (in a clockwise direction).
- For further assistance and more information on effects, please see the SimHub documentation.

If you still have some questions regarding the assembly of this product or about the manual itself, please refer to

our support department. They can be reached at [support@sim-lab.eu](mailto:support@sim-lab.eu)


Alternatively, we now have a Discord server where there are quite some experienced Sim-Lab customers hanging out. They might just help you along if you ask them nicely 😊 [www.sim-lab.eu/discord](https://www.sim-lab.eu/discord)

If you feel like printing this manual, please consider the environment before doing so. For the best results, make sure you print at 100% scale without borders.

Product page on the Sim-Lab website:



## Documents / Resources

	<a href="#">SIM LAB SD43 DASH LED</a> [pdf] Instruction Manual SD43 DASH LED, SD43, DASH LED, LED
---	--

## References

-  [Sim-Lab](#)
-  [SD43-LED Display](#)
-  [SimHub, DIY Sim Racing Dash and Hardware – Bring Your Sim Racing Rig To Life](#)