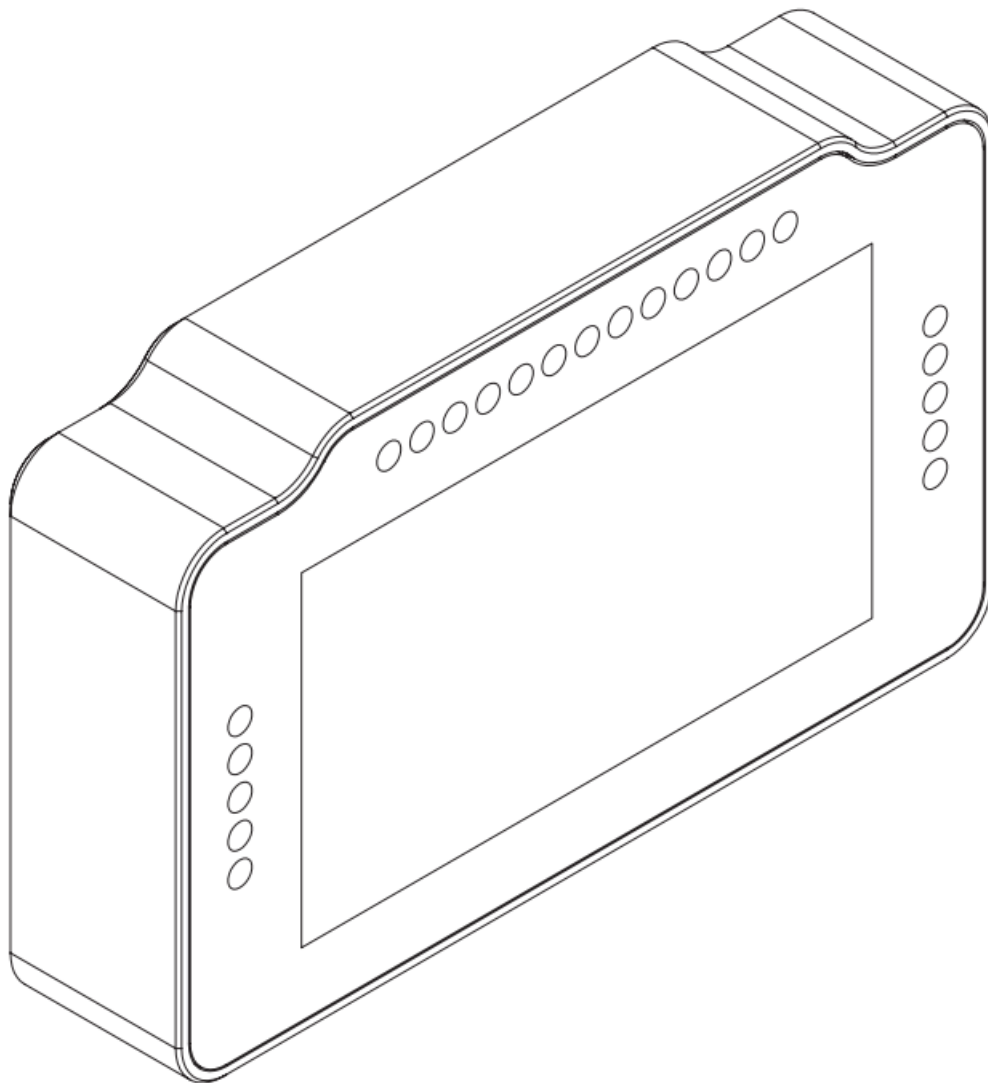




SIM LAB SD43 Dash LED Display Instruction Manual

[Home](#) » [SIM-LAB](#) » SIM LAB SD43 Dash LED Display Instruction Manual 

SIM LAB SD43 Dash LED Display



Contents

[1 BEFORE YOU START](#)

[2 Mounting the dash](#)

[3 Installing drivers](#)

[4 SimHub installation](#)

[5 SimHub configuration](#)

[6 Bill of materials](#)

[7 CUSTOMERS](#)

[SUPPORT](#)

[8 Documents / Resources](#)

[8.1 References](#)

[9 Related Posts](#)

BEFORE YOU START

Thank you for your purchase. In this manual we will provide you with the means to get started using your new dash!

Dash SD43 LED

Features:

4.3" 480×272 Pixel color TFT LCD USB D 480

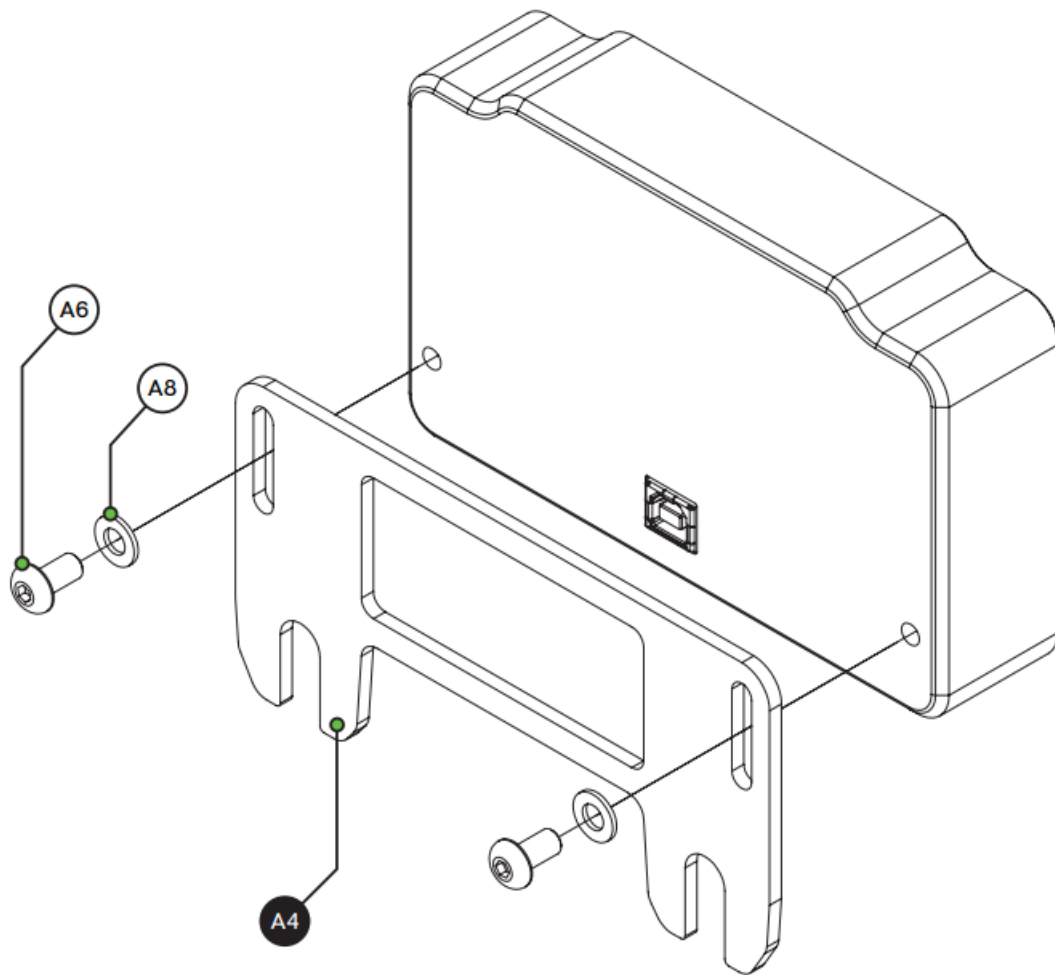
23 full RGB leds
Up to 60 FPS
16 bit Colors
USB Powered
Multiple software options
Drivers included



Mounting the dash is very easy thanks to the included mounting plate. With just 2 bolts (A5) you can mount it directly to your Fanatec base. For mounting onto a servo motor mount you can use the existing bolts with which the servo is mounted to a front mount or servo motor holder.

Mounting the dash

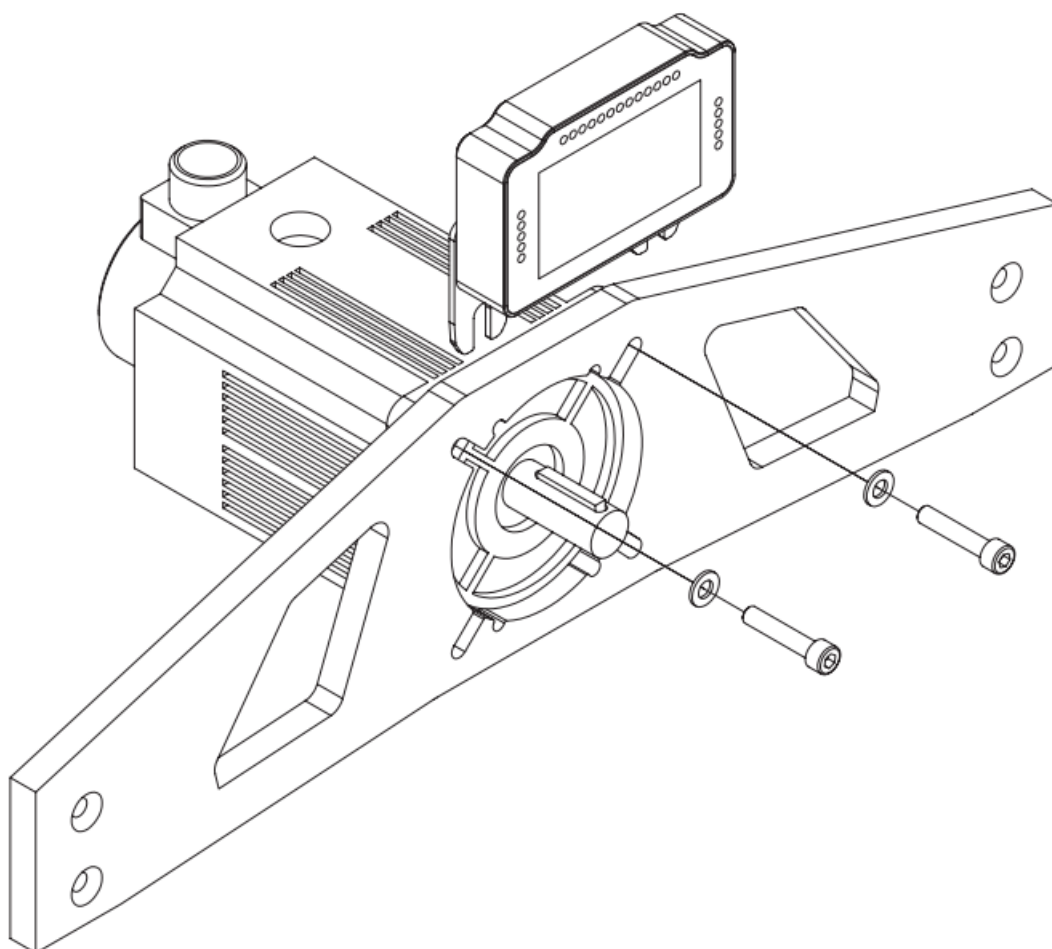
To be able to mount the dash on the hardware of your choice, we provide adapter plates. Which one you have will depend on your purchase and may differ from the following one we show.



OSW/Simucube/VRS

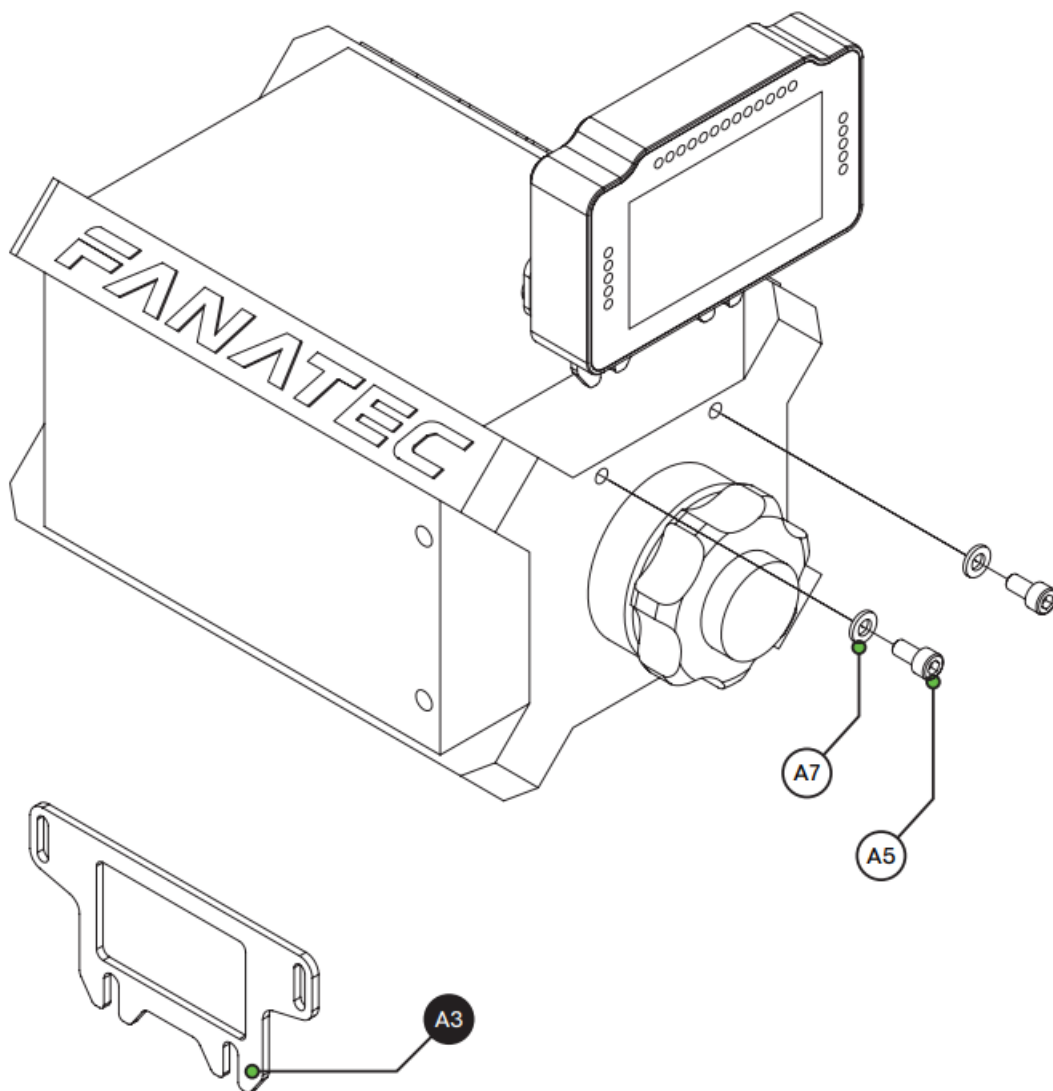
Loosen the existing upper bolts which hold the motor in place. Simply slide the adapter plate over the exposed thread and tighten the bolts against the plate.

Note: the adapter plate for a Simucube Ultimate is sold separately



Fanatec DD1/DD2/CSL

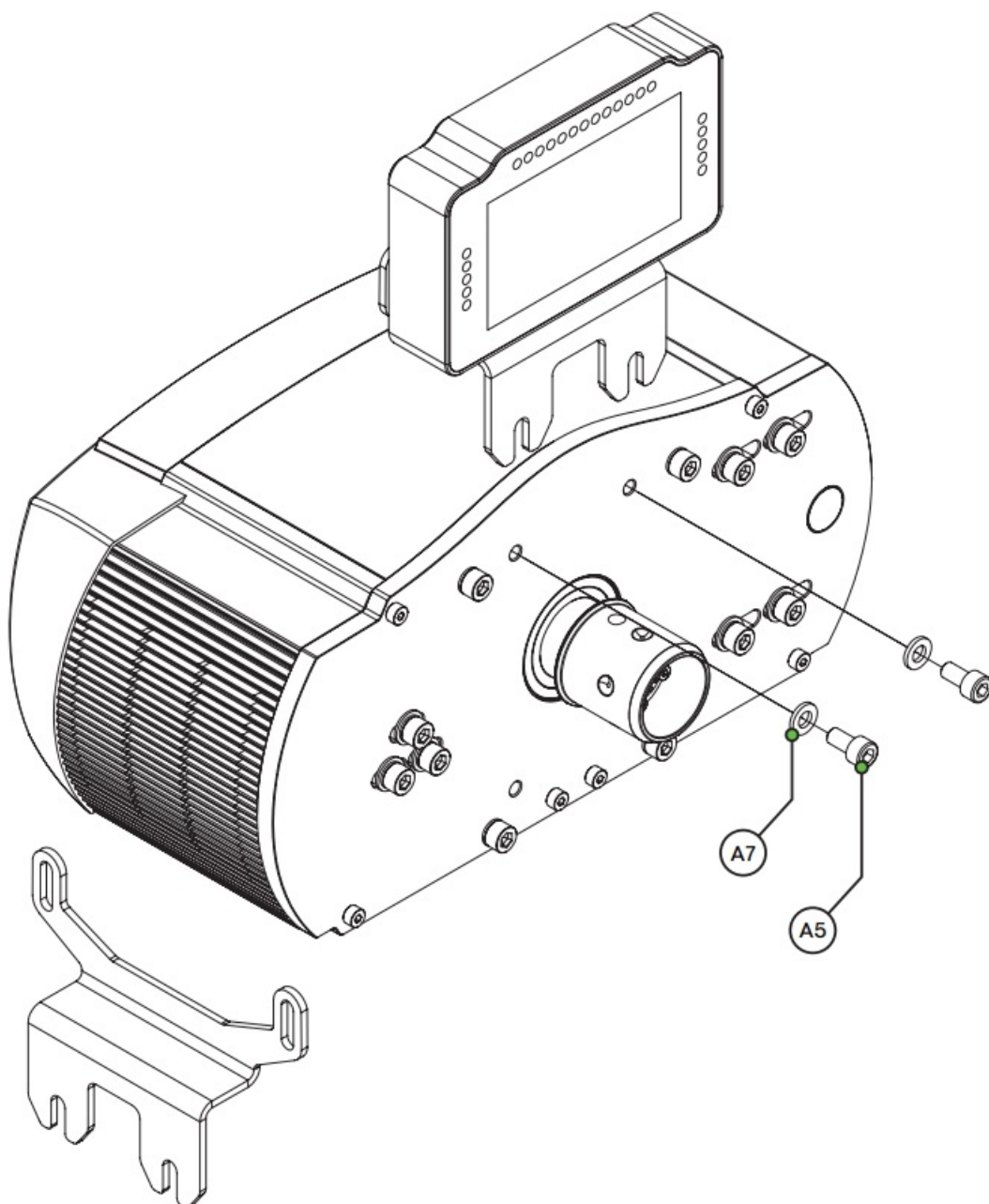
Locate the accesory mounting holes on your Fanatec hardware and use the two bolts (A4) and washers (A6) from our supplied hardware kit.



Fanatec CSW

Although the regular Fanatec adapter plate can be fitted, we prefer this one because it offsets the dash from the steering wheel.

Note: This plate is sold separately



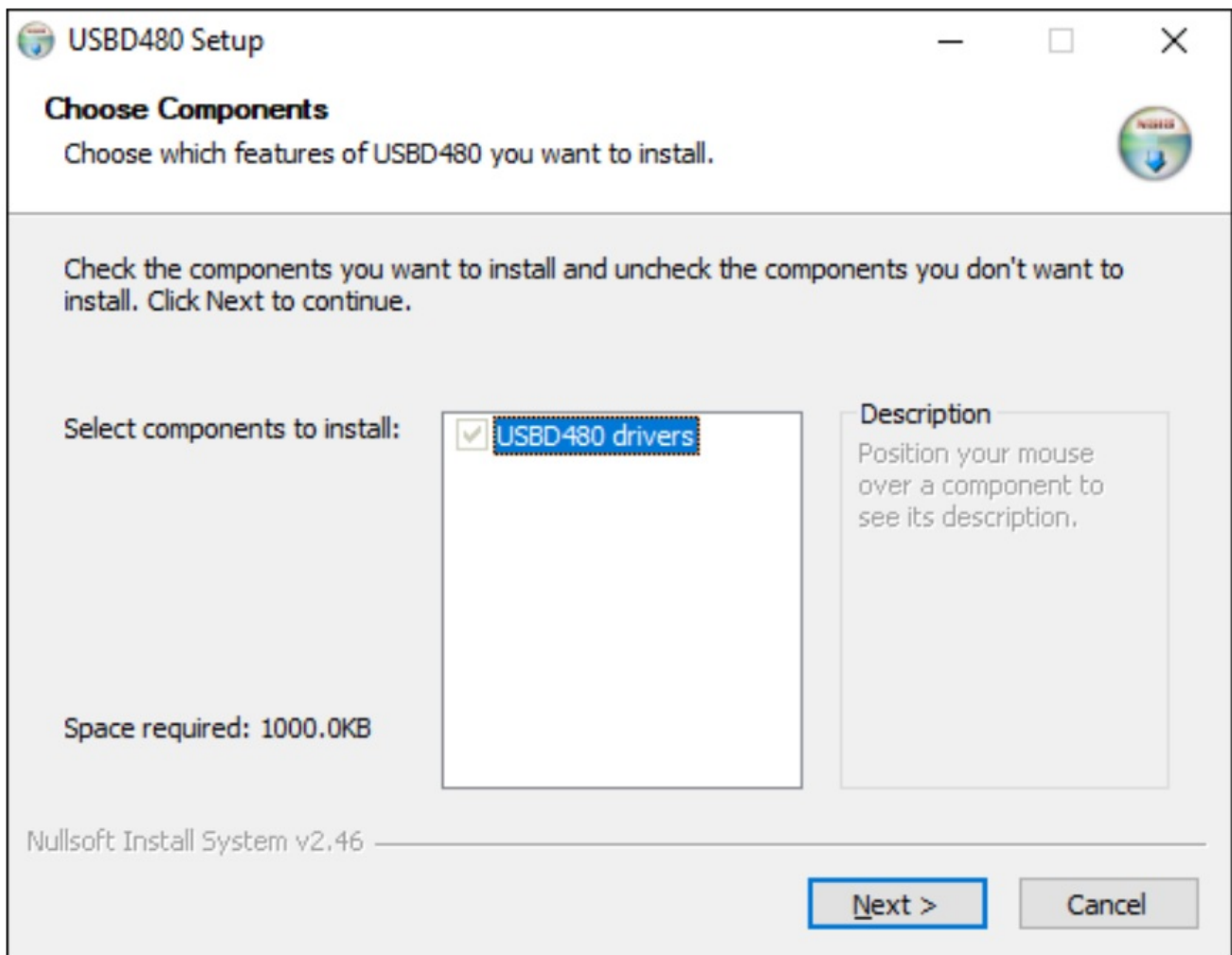
Installing drivers

To make the display part of the dash functional, specific drivers are needed. Drivers can be downloaded from the product page.

[> download drivers <](#)

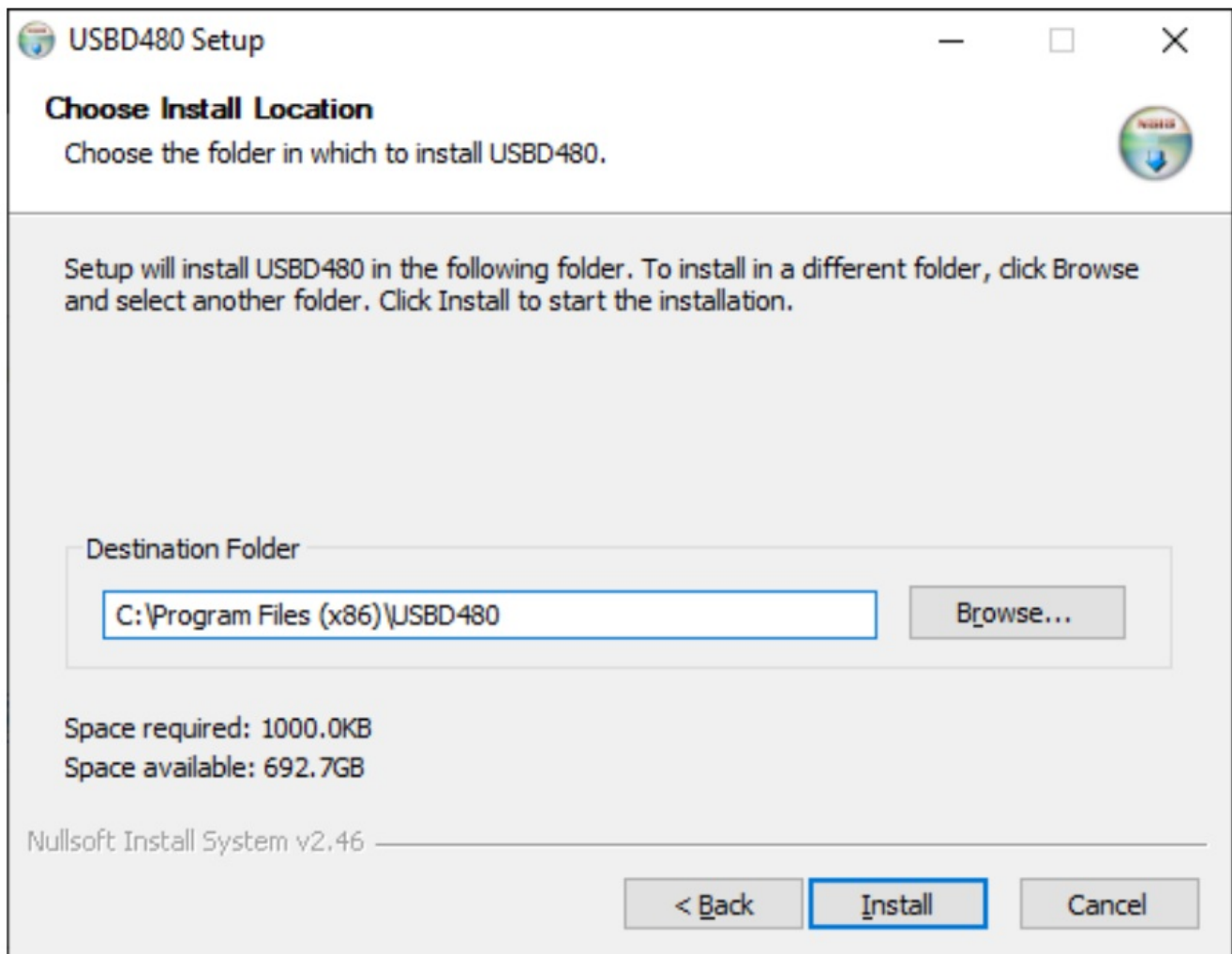
Installation

To install the display drivers, run the downloaded package and follow these steps:



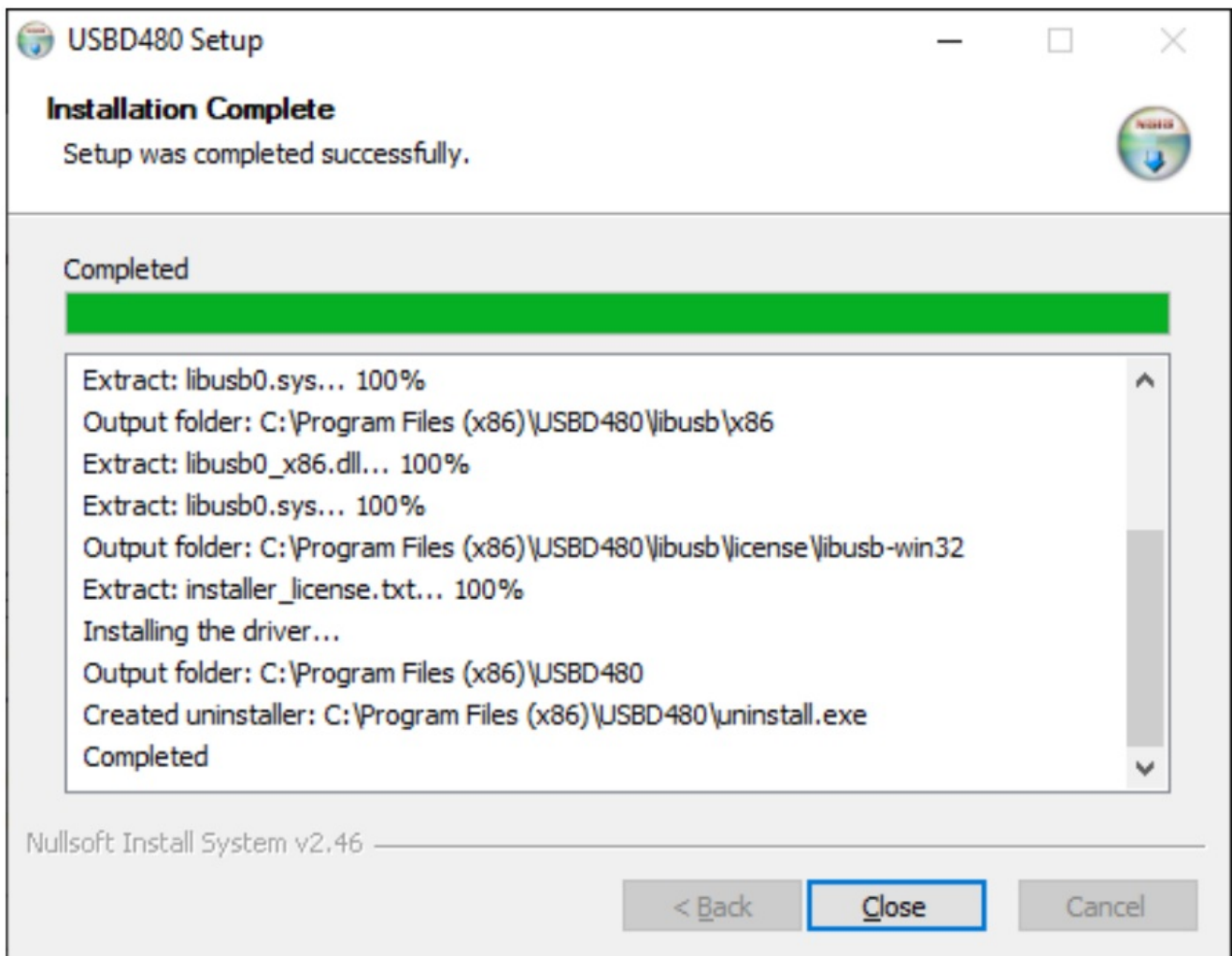
Press 'Next'.

Specify the location where to install the drivers:



Press 'Install'.

After the loading bar is full and says 'Completed':



Press 'Close'. Installation of the display drivers is now done.

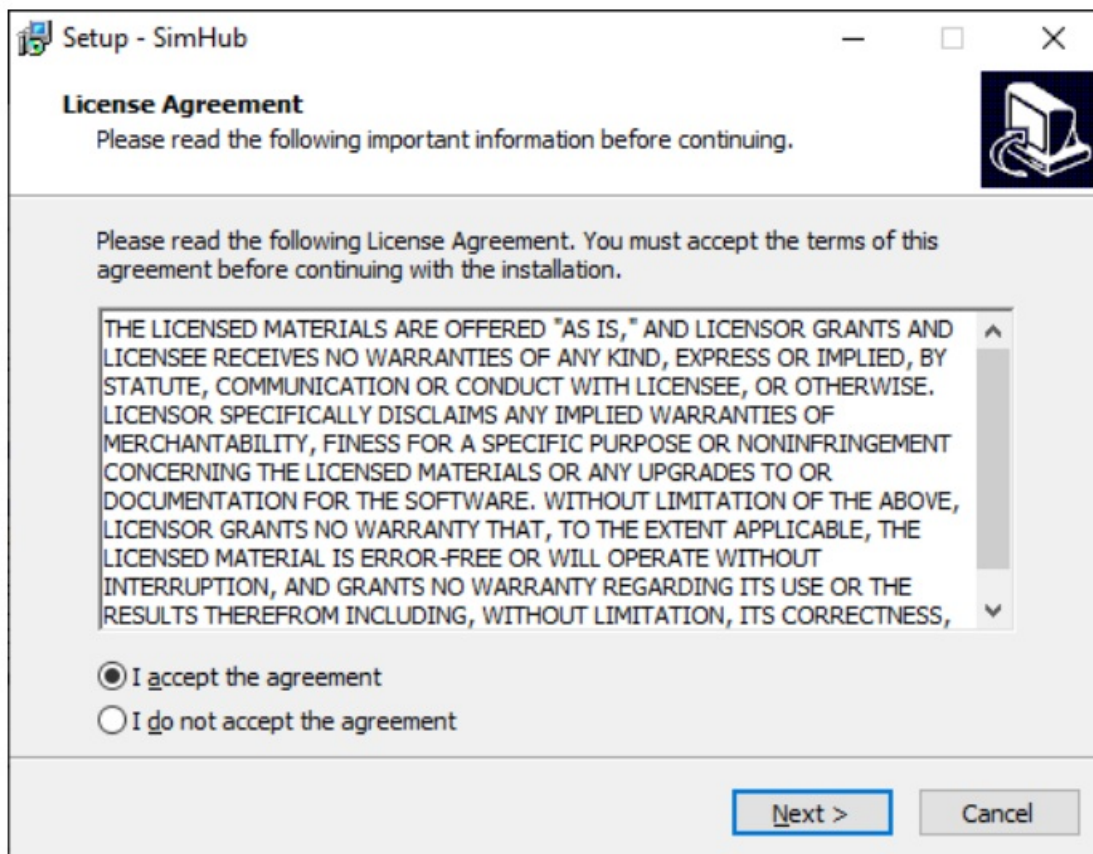
SimHub installation

To control the LEDs of the dash, Simhub can be used.

Download the latest version of Simhub from <https://simhubdash.com>

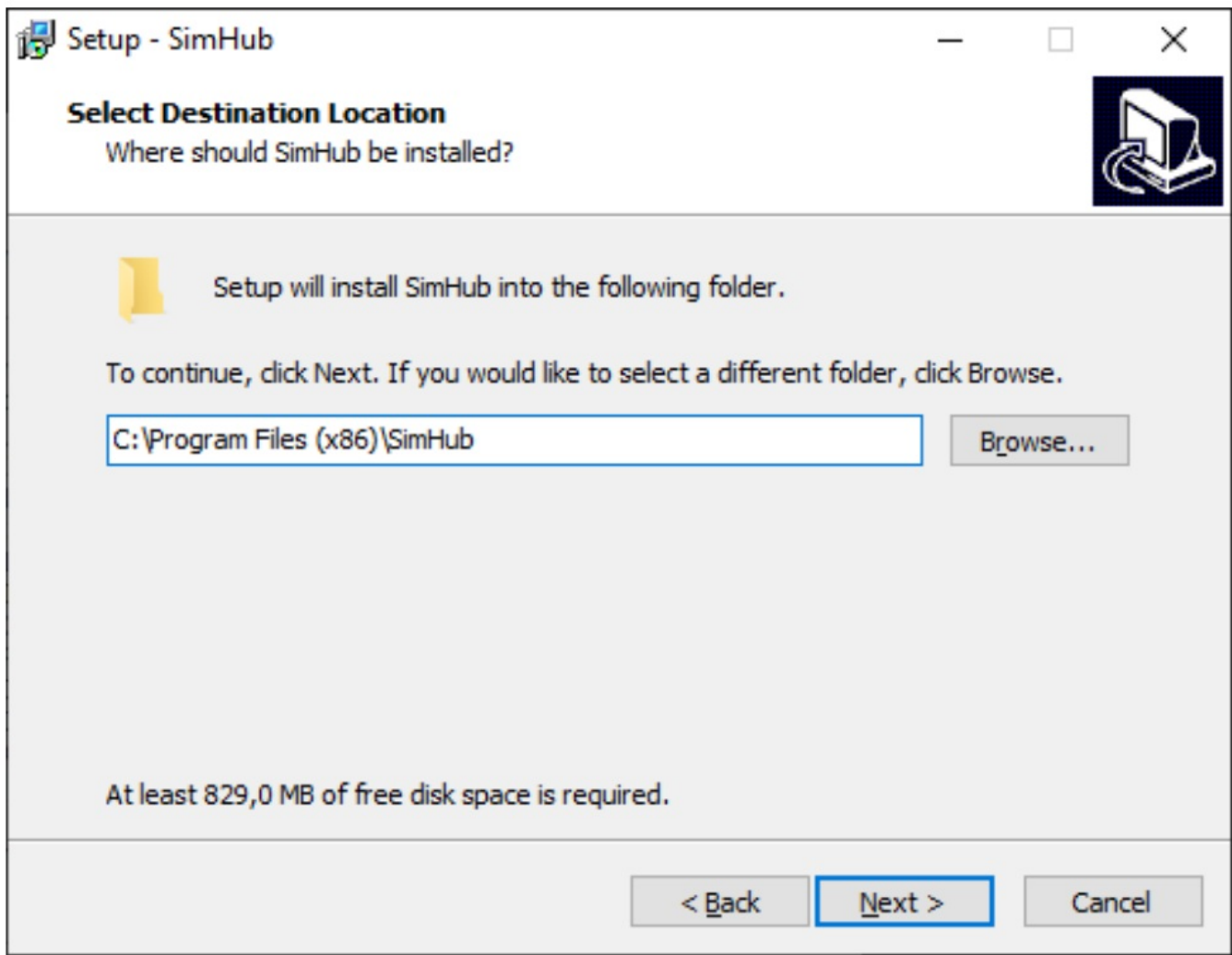
Installation

Unzip the downloaded file and run the setup file:



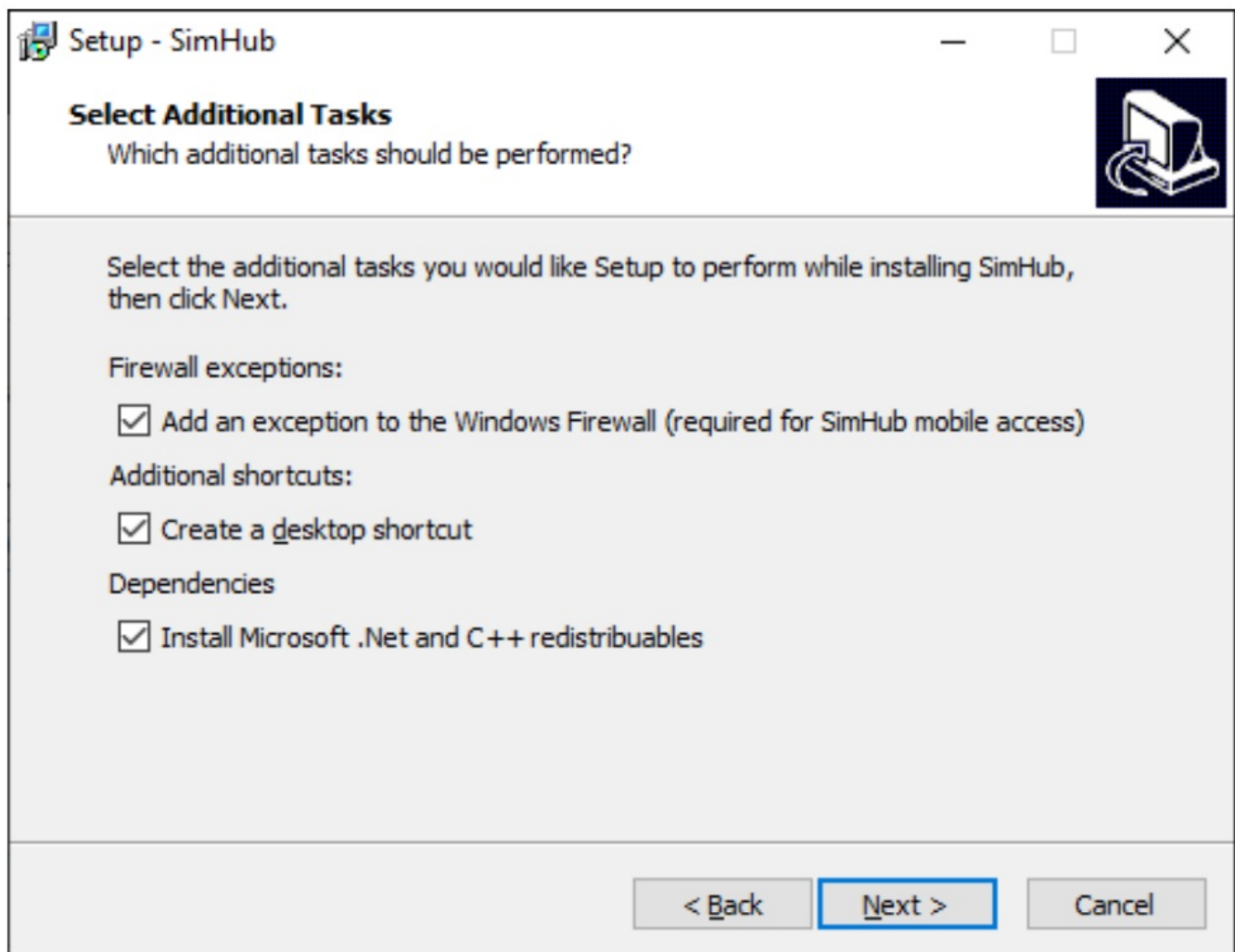
Press 'Next'.

Specify the location where to install the software:

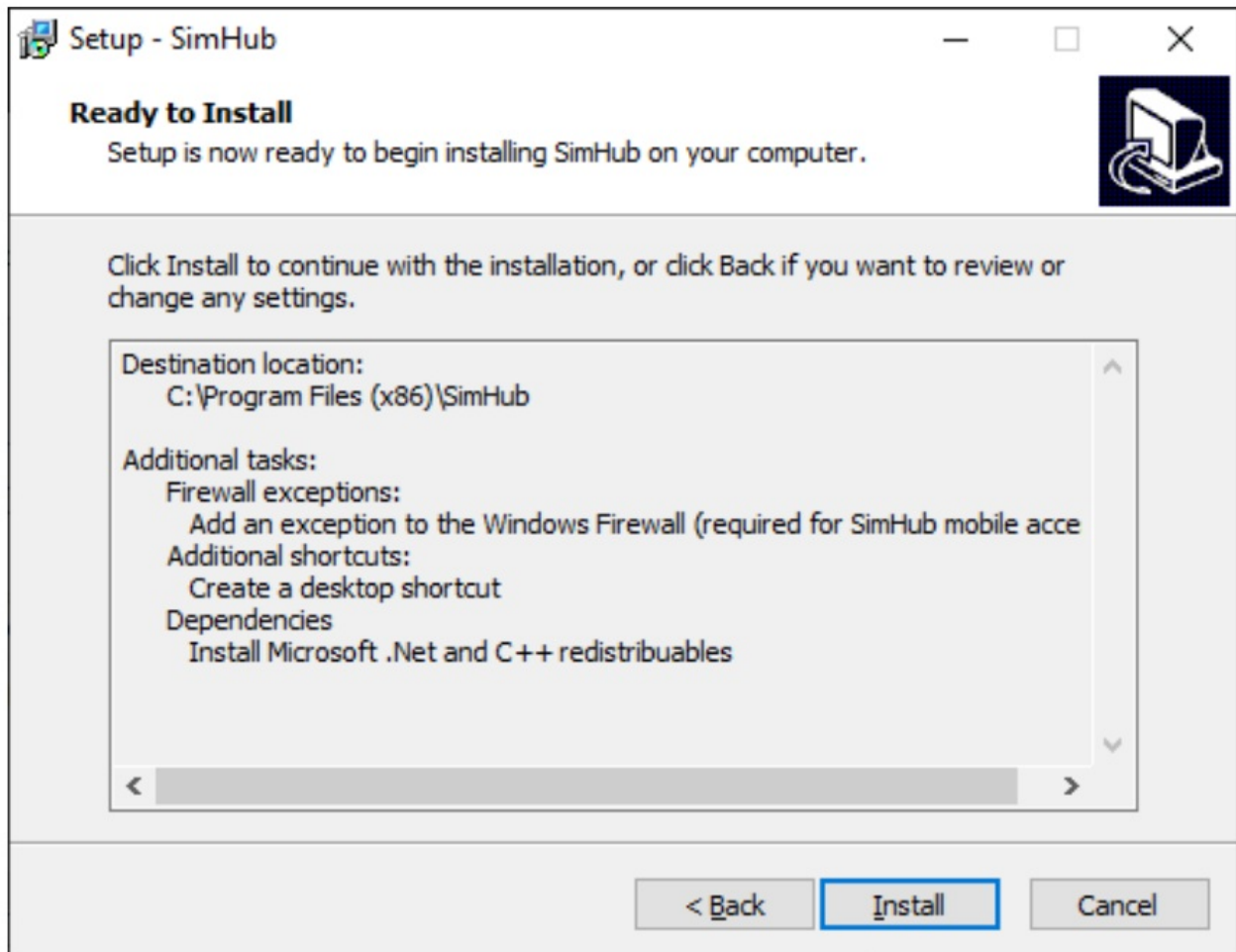


Press 'Next'.

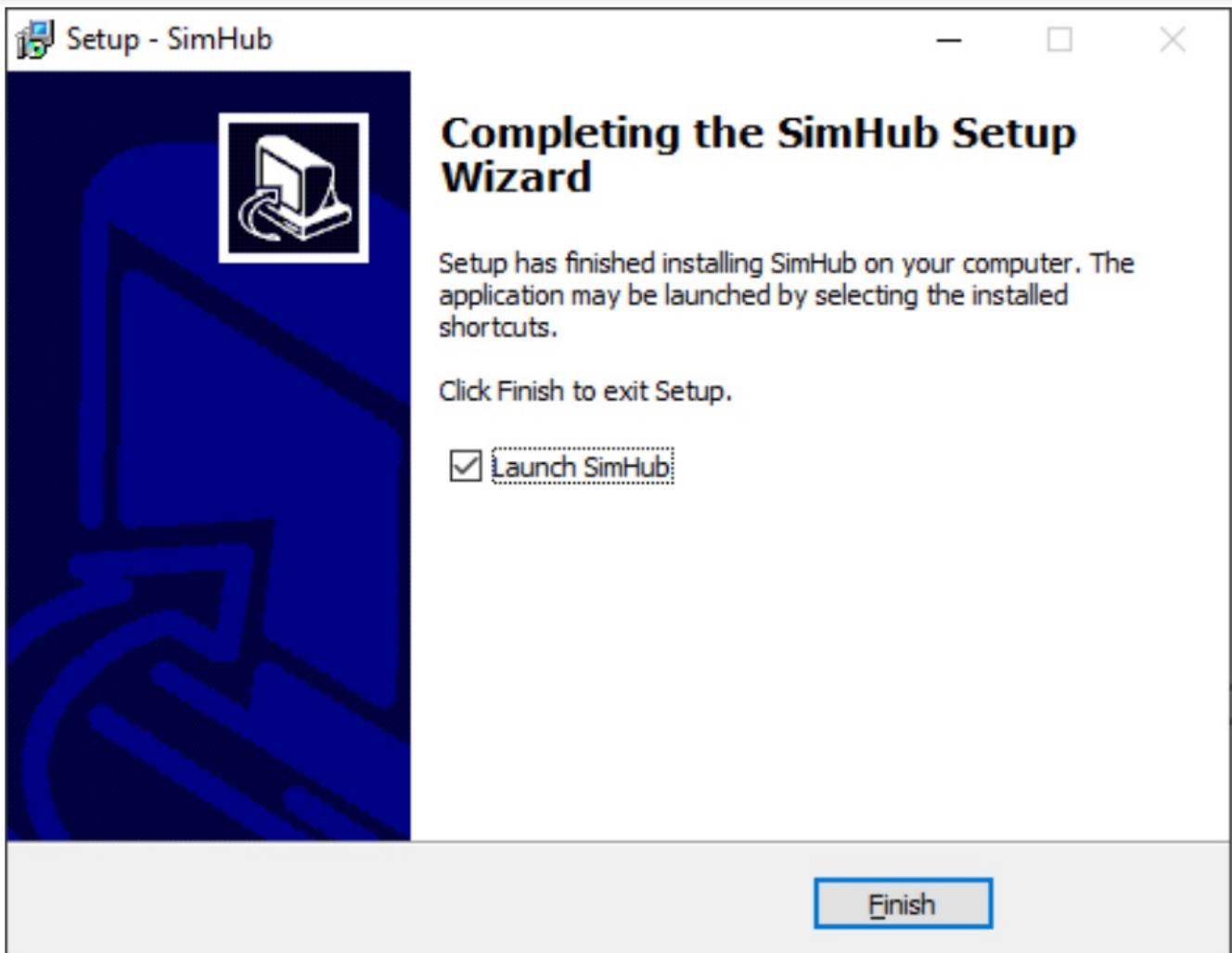
Make sure all options are checked:



Press 'Next'.



Press 'Install'.



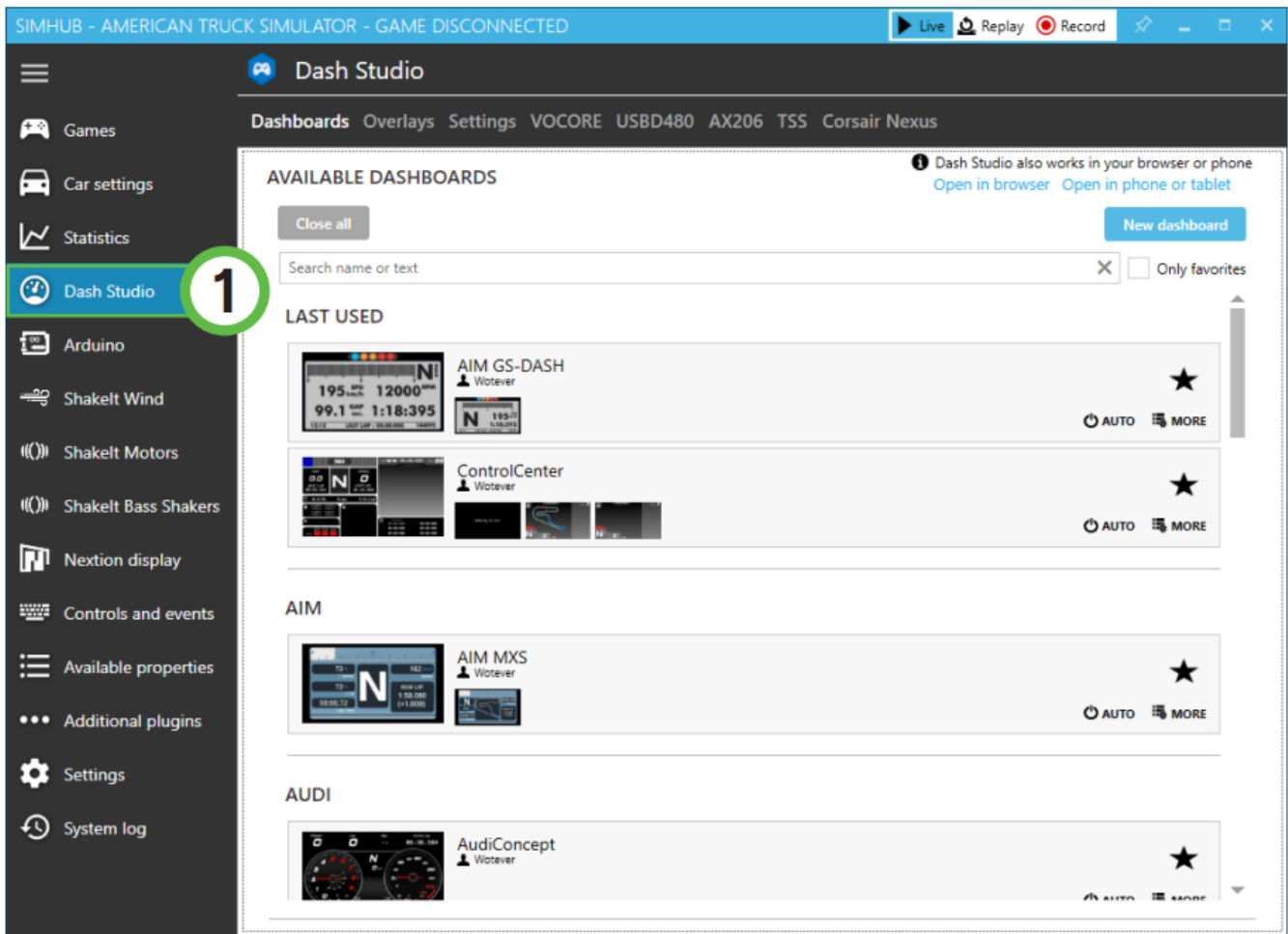
After installation press 'Finish'.

SimHub configuration

If you haven't connected the dash with the supplied USB cable to your computer, this is required from this point forward.

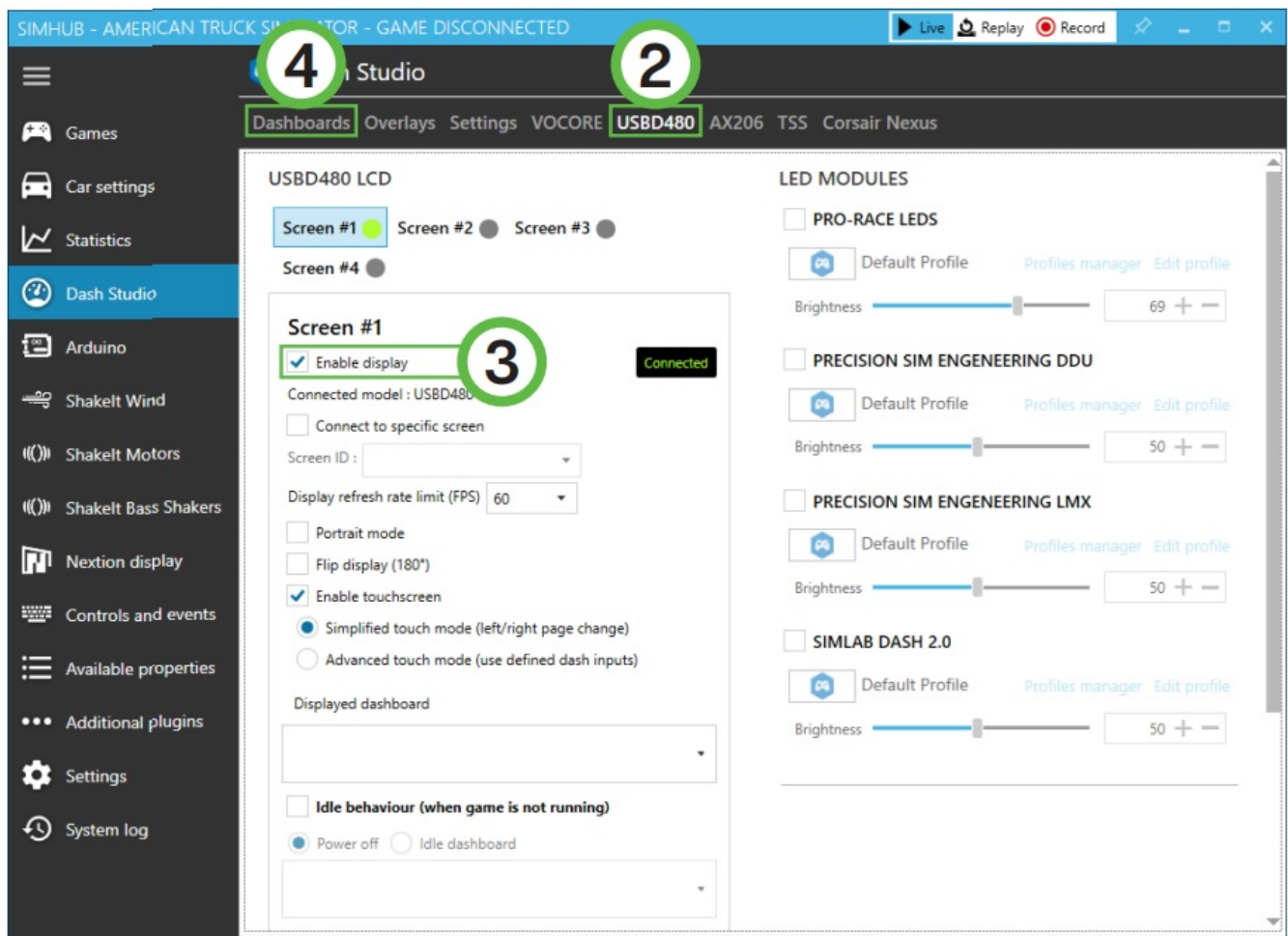
Activation

To use the display with SimHub, it needs to be enabled:



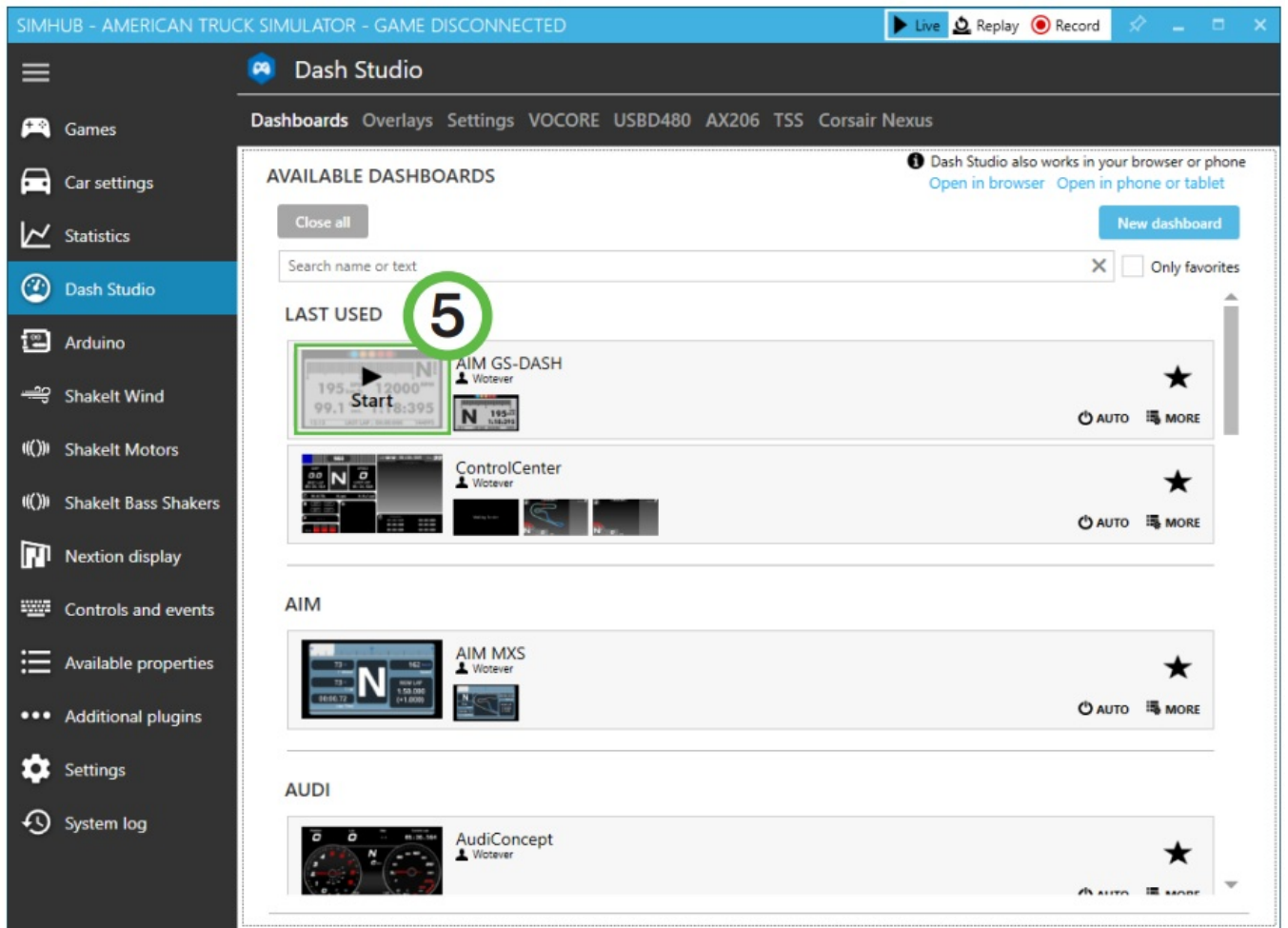
Press 'Dash Studio' (1).

Press 'USB480' (2).



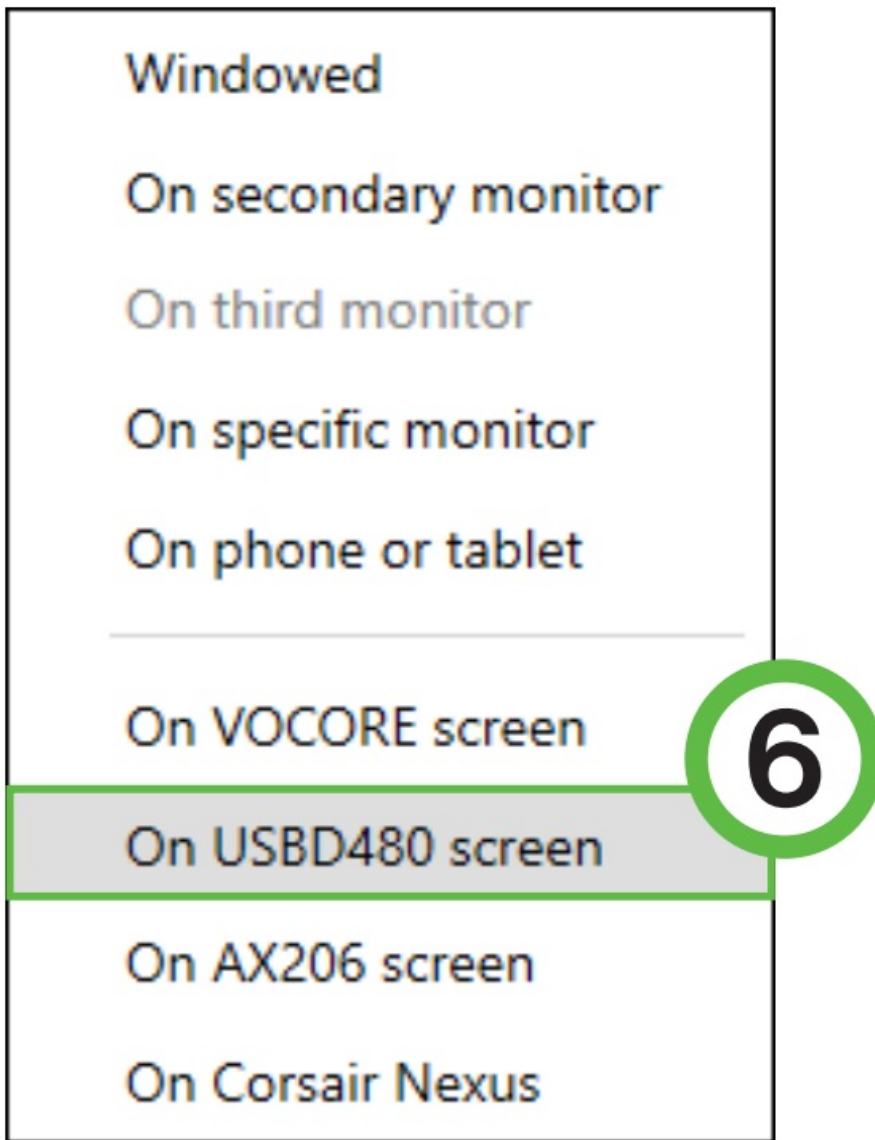
In the 'Screen #1' section, check 'Enable display' (3). The 'Connected' indicator will appear on its right hand side. When the screen is connected, go back to 'Dashboards' (4).

Hover over the dashboard you want to display and select 'Start'.



A popup will appear, select 'On USB480 screen' (6).

The display will now boot using the selected dash.



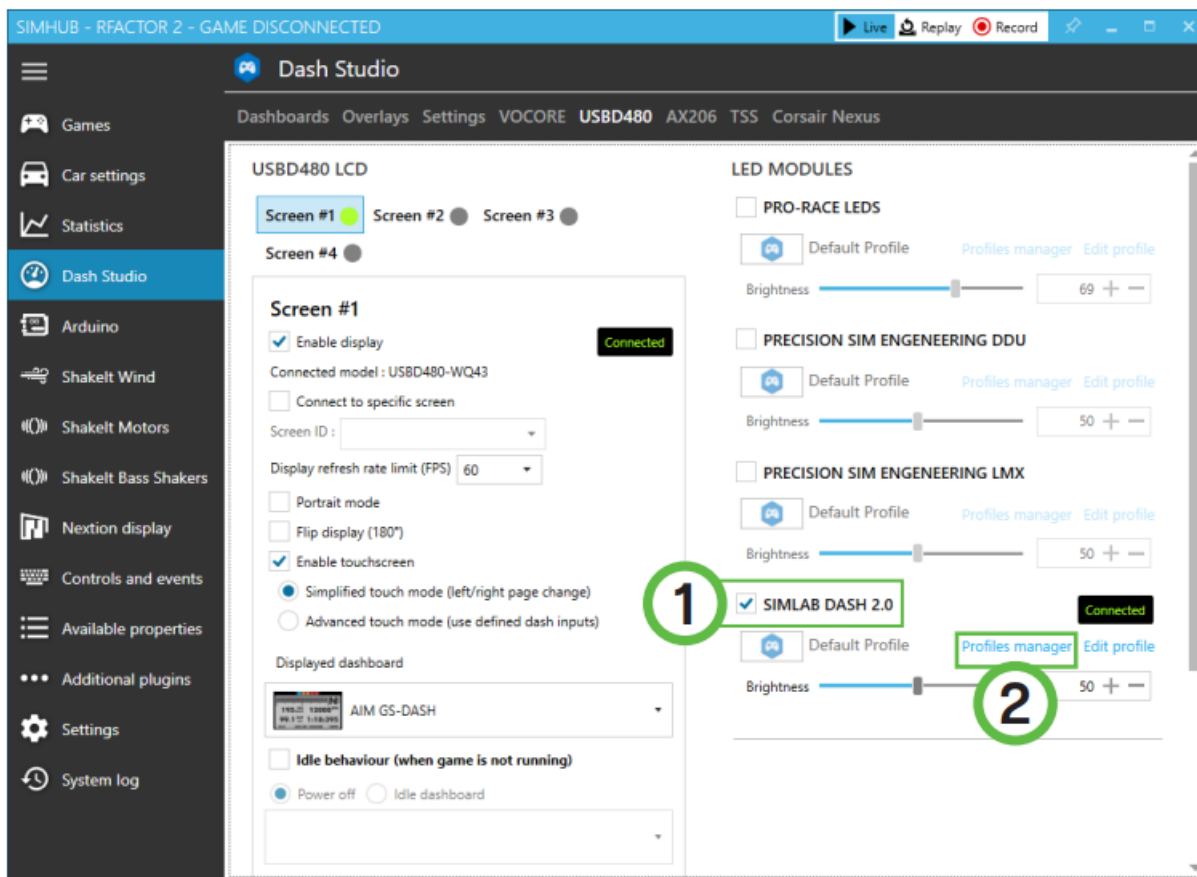
NOTE: Importing or changing dash profiles is not part of this document. For more information on that topic, please see the Sim Hub documentation.

Controlling the LEDs

A sample LED profile can be downloaded from the product page.

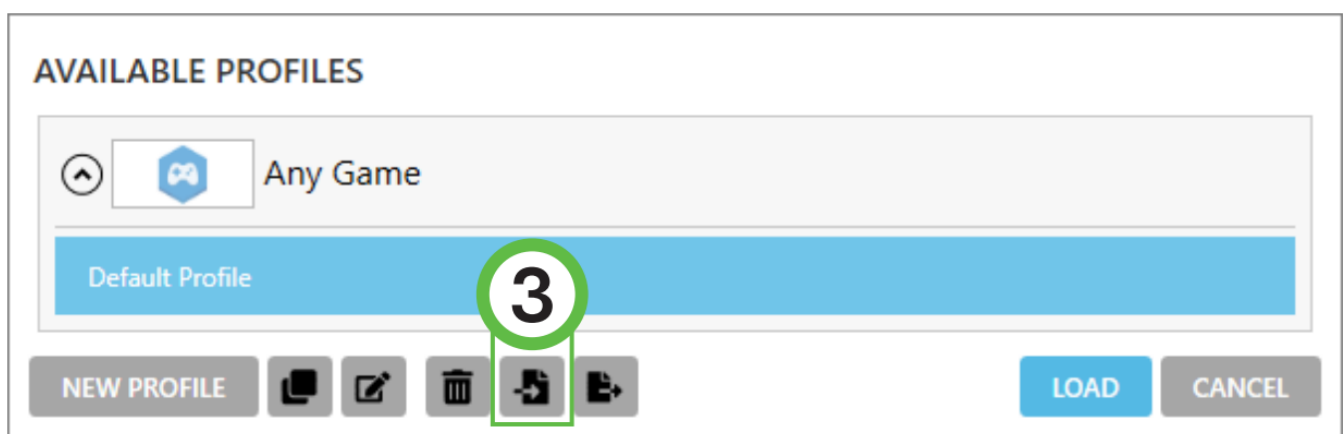
[> download led profile <](#)

To enable or adjust LEDs, navigate back to the 'USB480' page in 'Dash Studio'. You may also refer to Pages 5/6 of this document.

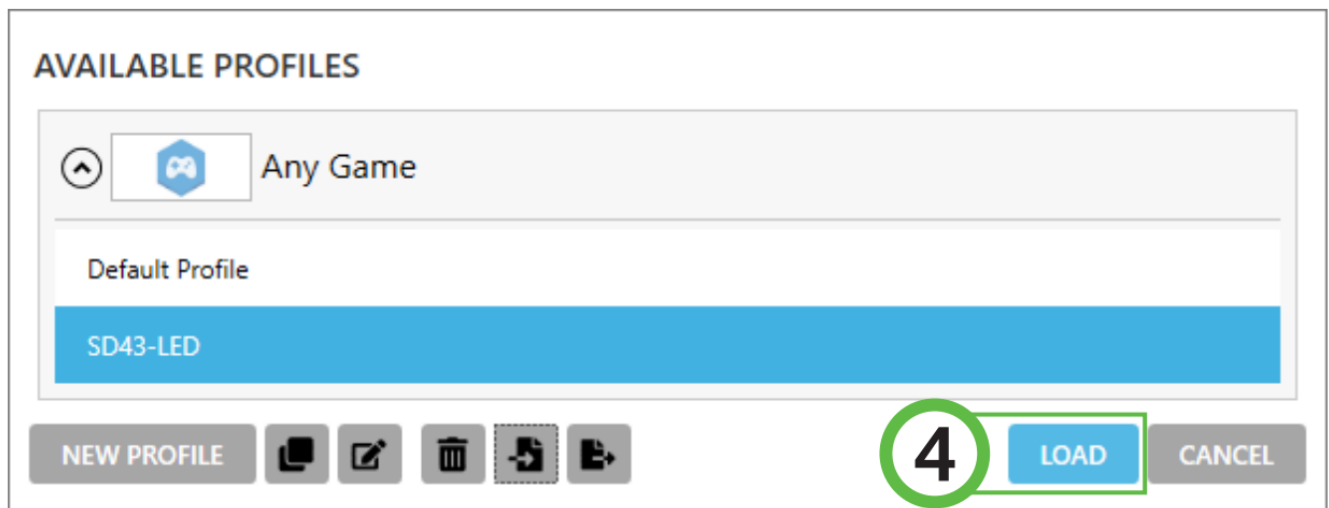


Check the 'SIMLAB DASH 2.0' module (1). A 'Connected' indicator will appear to confirm the connection. Press 'Profiles manager' (2) to import the profile.

Click on the import profile icon (3).



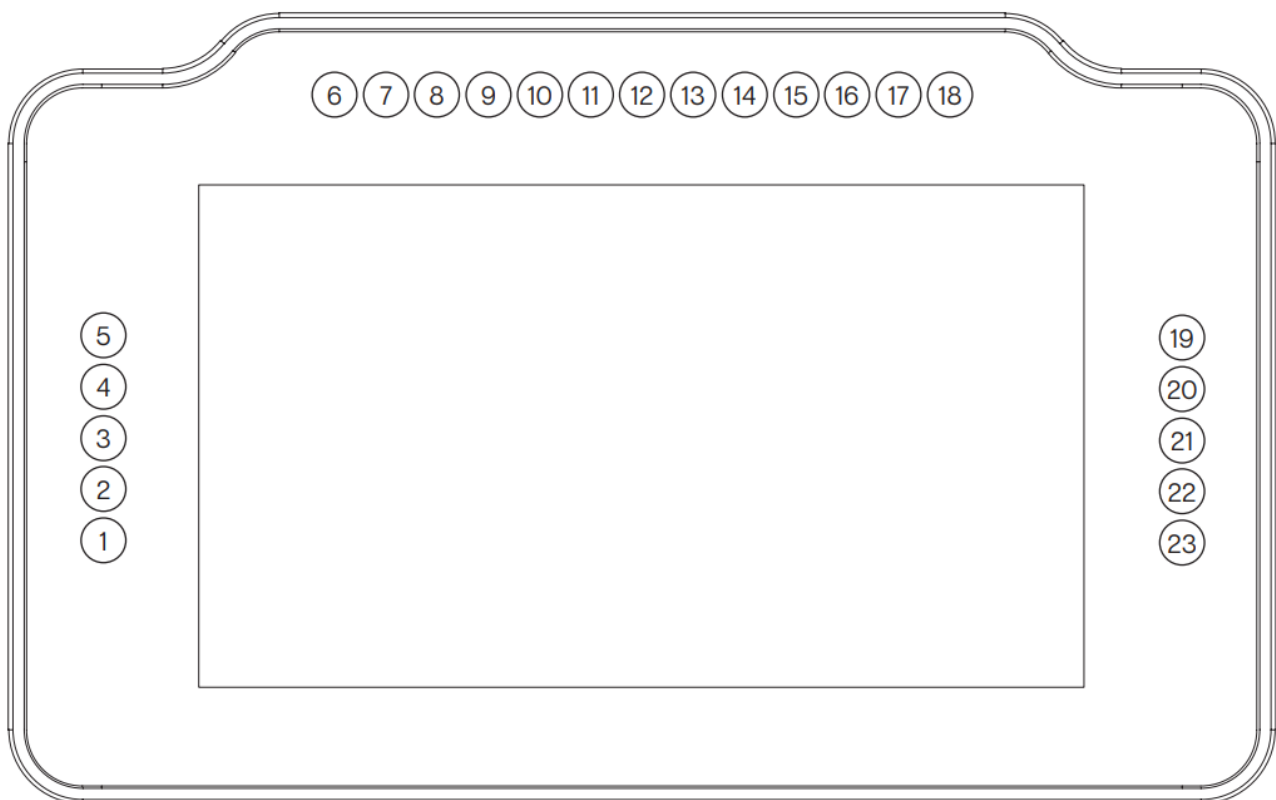
Browse to the location where you stored the LED profile, select it and press 'Open'.



The load the profile, make sure it is selected (SD43-LED) and press 'Load' (4).

Changing the LEDs' functions.

To change the LED effects you need to know the LED numbering of the dash. The numbering starts at the bottom left and continues clockwise to the bottom right. See the image below for reference:



There should be enough info in the sample profile to be able to adjust to your liking. Just keep in mind, you mostly need two values. The number of the LED where you want an effect to start, and the amount of LEDs to use for said effect (in a clockwise direction).

For further assistance and more information on effects, please see the SimHub documentation.

Bill of materials

IN THE BOX

#	Part	QTY	Note
A1	Dash SD43-LED	1	
A2	USB B Cable	1	
A3	Adapter plate Fanatic's	1	Fits all Fanatic's hardware.
A4	Adapter OSW/SC/VRS	1	
A5	Bolt M6 X 10 DIN 912	2	Used with Fanatic's.
A6	Bolt M5 X 10 DIN 7380	4	To fit adapter plate to dash.
A7	Washer M6 DIN 125-A	4	
A8	Washer M5 DIN 125-A	4	
Disclaimer: for some entries on this list, we supply more than required as spare materials. Don't worry if you have some leftovers, this is intentional.			

CUSTOMERS SUPPORT

If you still have some questions regarding assembly of this product or about the manual itself, please refer to our support department. They can be reached at support@sim-lab.eu

Alternatively, we now have a Discord server where there are quite some experienced Sim-Lab customers hanging out. They might just help you along if you ask them nicely 😊


www.sim-lab.eu/discord

If you feel like printing this manual, please consider the environment before doing so. For the best results, make sure you print at 100% scale without borders.

[Product page on the Sim-Lab website:](#)



Documents / Resources

	<p>SIM LAB SD43 Dash LED Display [pdf] Instruction Manual</p> <p>SD43 Dash LED Display, SD43, Dash LED Display, LED Display, Display</p>
---	--

References

-  [Sim-Lab](#)
-  [SD43-LED Display](#)
-  [SimHub, DIY Sim Racing Dash and Hardware – Bring Your Sim Racing Rig To Life](#)