



SIM LAB GRID DDU5 Display Instruction Manual

[Home](#) » [SIM-LAB](#) » SIM LAB GRID DDU5 Display Instruction Manual 



INSTRUCTION MANUAL



GRID DDU5
VERSION 1.01
Last updated: 23-06-2022

Contents

- [1 BEFORE YOU START:](#)
- [2 Mounting the dash](#)
- [3 Installing drivers](#)
- [4 Sim Hub installation](#)
- [5 Sim Hub configuration](#)
- [6 Bill of materials](#)
- [7 Documents / Resources](#)
- [7.1 References](#)

BEFORE YOU START:

Thank you for your purchase. In this manual we will provide you with the means to get started using your new dash!

GRID DDU5

Features:

5" 854×480 VOCORE LCD

20 full RGB leds

Up to 30 FPS

24 bit Colors

USB Powered

Multiple software options

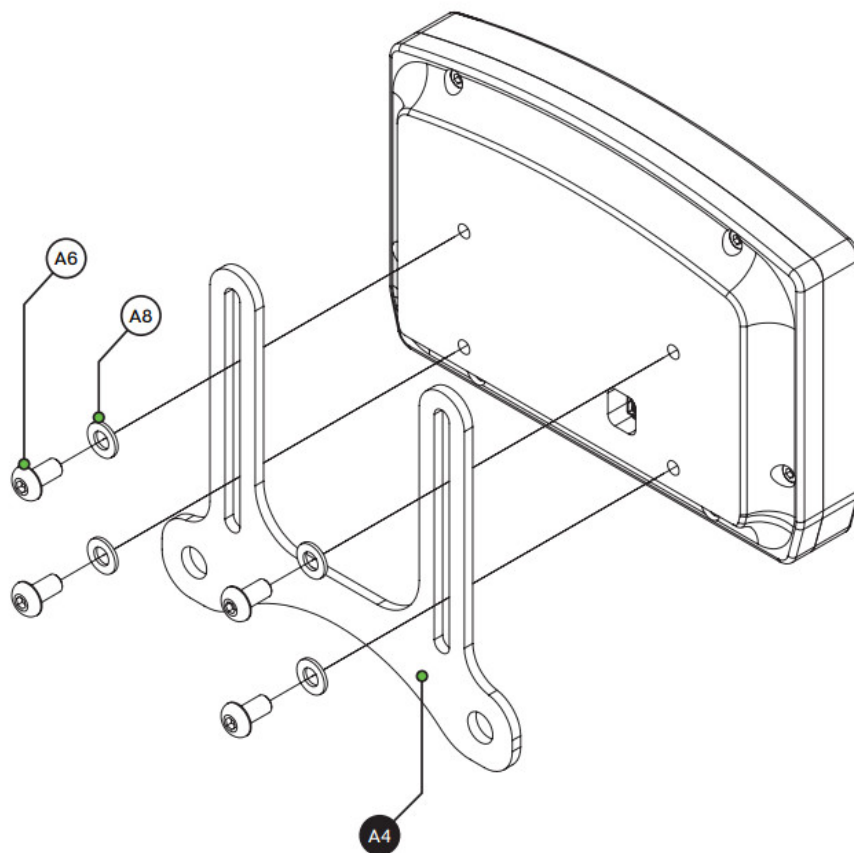
Drivers included



Mounting the dash is very easy thanks to the included mounting brackets. We offer a wide range of support for most popular hardware. In this manual we only display the two mounting brackets included with the dash. Please review our website to determine which mounting bracket fits your hardware.

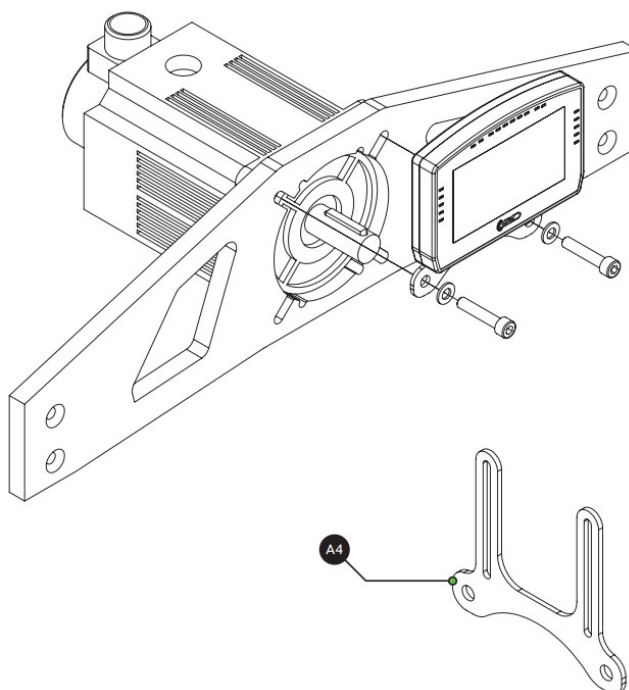
Mounting the dash

To be able to mount the dash on the hardware of your choice, we provide several mounting brackets. Which ones you have received may depend on your purchase and may be different from the following ones we show. However, mounting is all more or less the same. With the instructions for the two included brackets, you should be able to mount any specific ones for your hardware.



OSW/SC1/VRS

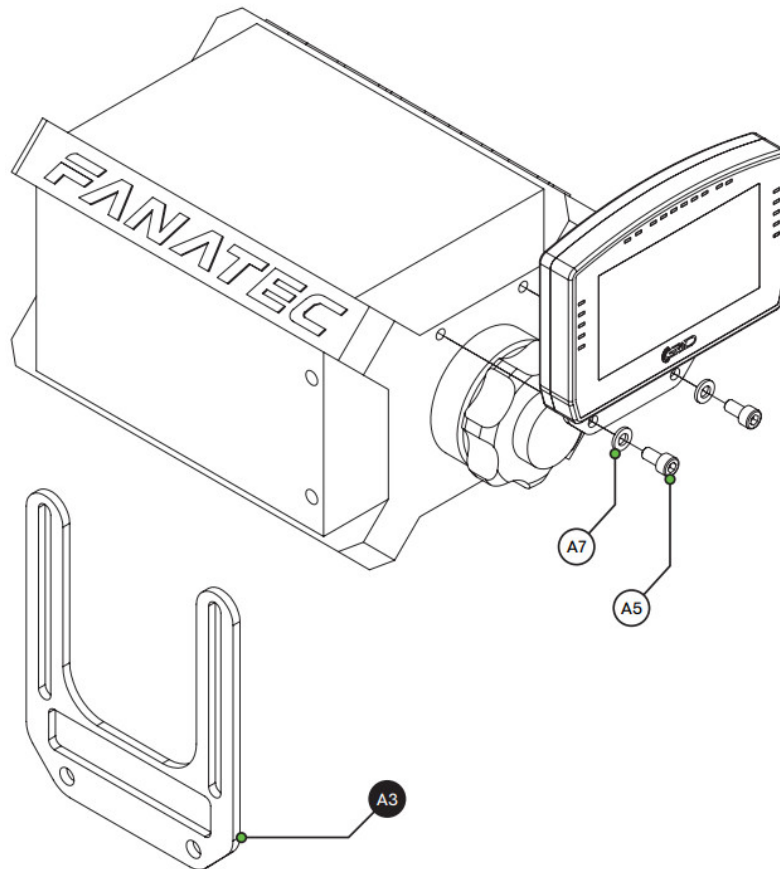
Remove the existing upper bolts which hold the motor in place. Re-use these bolts and washers to fix the mounting bracket to the front mount.



Fanatec DD1/DD2

Locate the accessory mounting holes on your Fanatec hardware and use the two bolts (A4) and washers (A6)

from our supplied hardware kit.



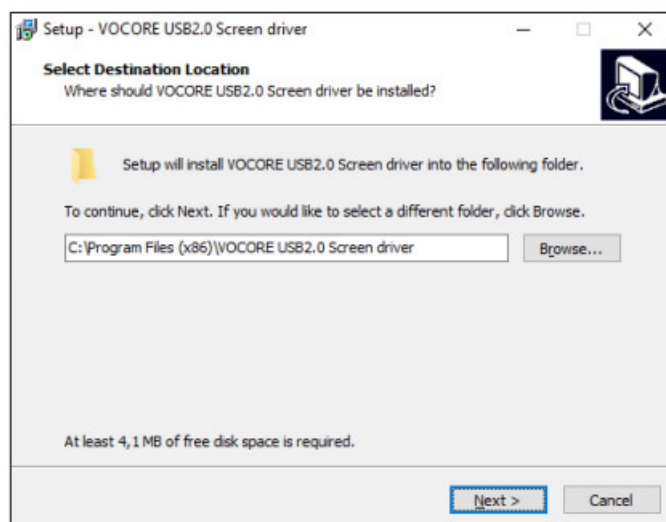
Installing drivers

To make the display part of the dash functional, specific drivers are needed. Drivers can be downloaded from the product page.

> [download drivers](#) <

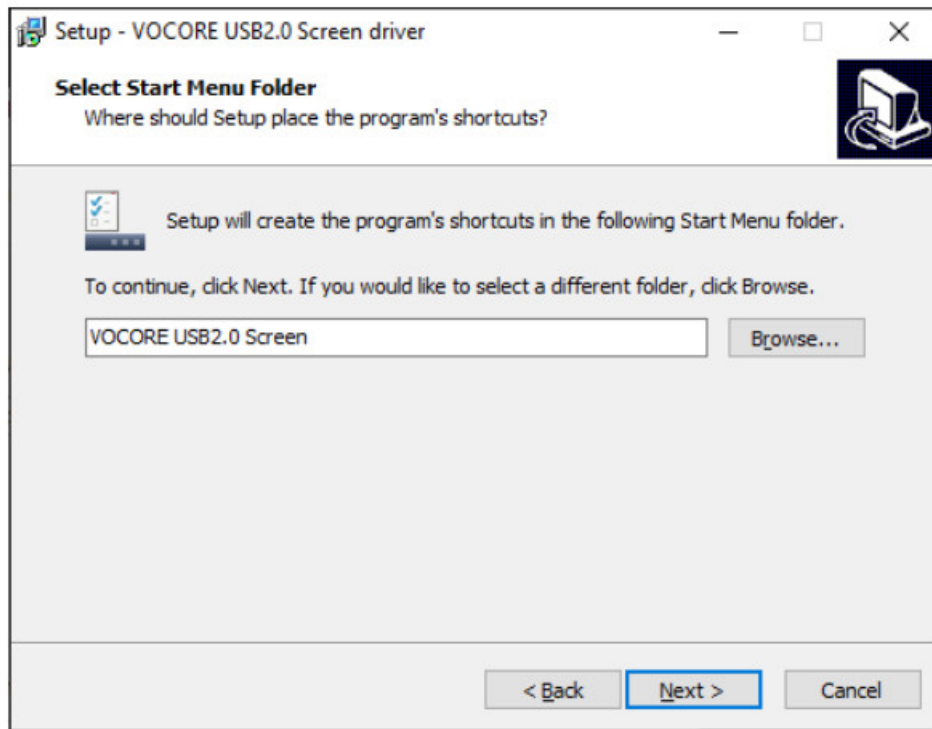
Installation

To install the display drivers, run the downloaded package and specify the location where to install the drivers:



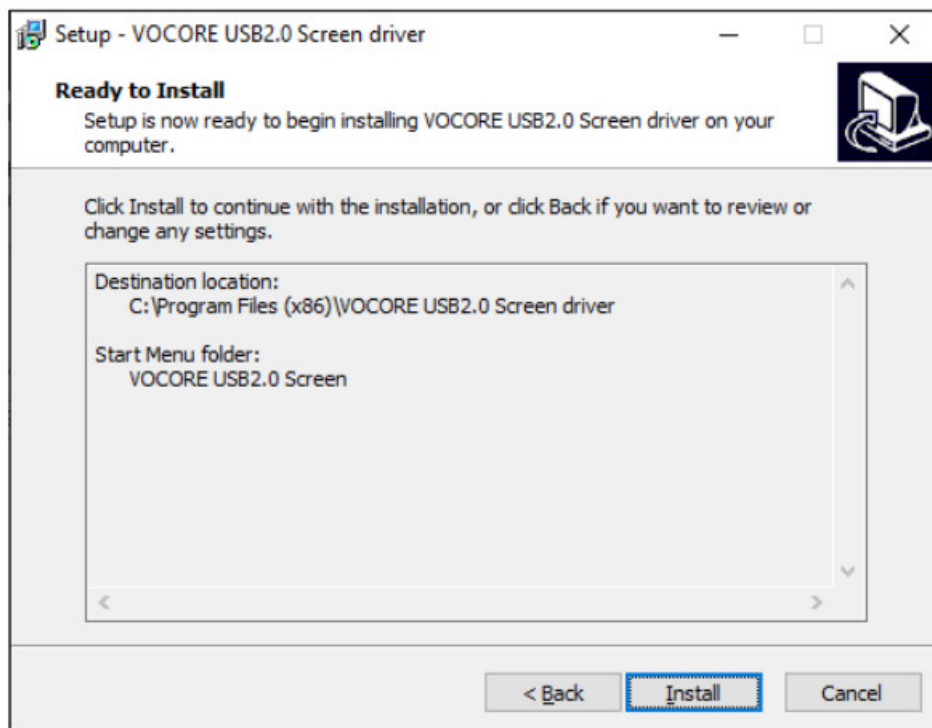
Press 'Next'.

Specify the name of the start menu folder:



Press 'Next'.

Review the settings before installation:

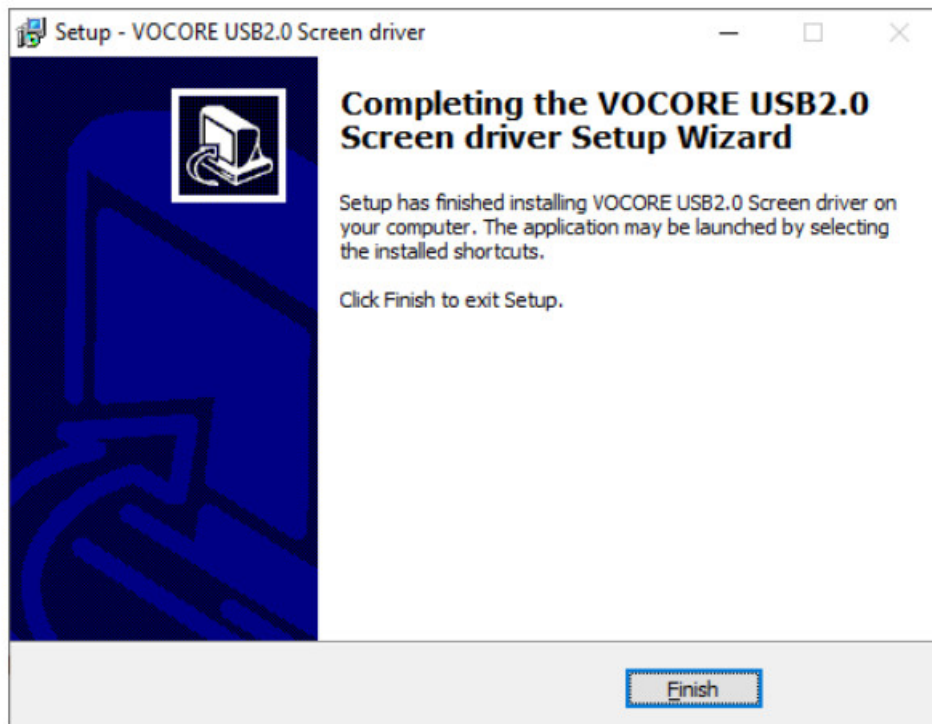


Press 'Install'.

The drivers will install now. Sometimes this can take longer than expected. This usually means a system restore point is being made and should not hinder installation.

If it does, unplug the USB cable to the Dash in case it is connected and try again.

Make sure you have administrator rights on your system.



Press 'Finish'.

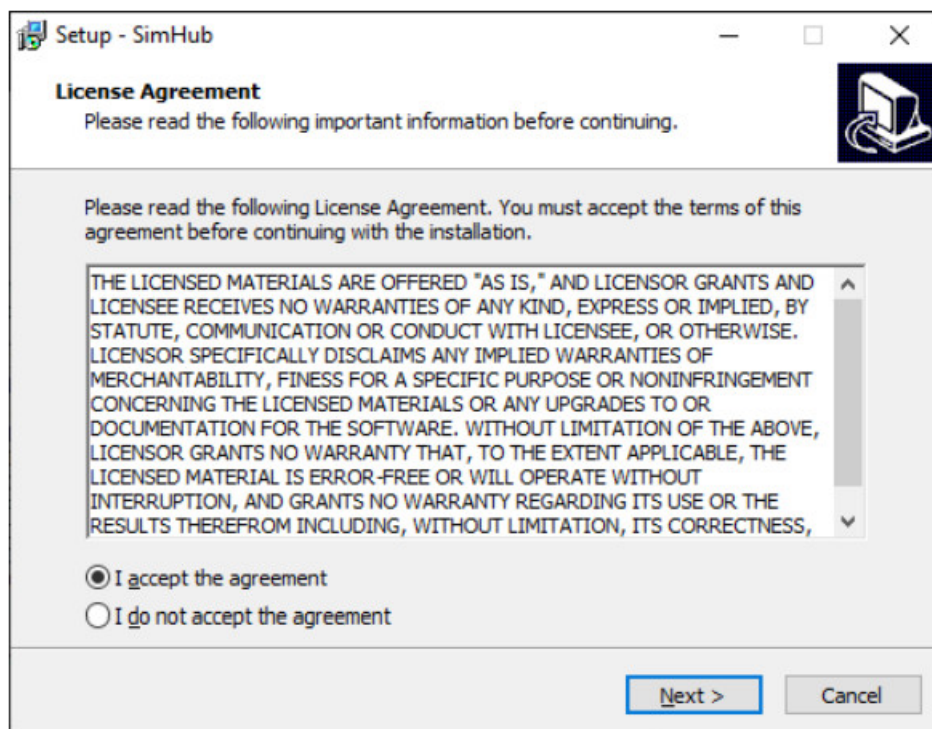
Sim Hub installation

To control the LEDs of the dash, Sim Hub can be used.

Download the latest version of Sim Hub from <https://simhubdash.com>

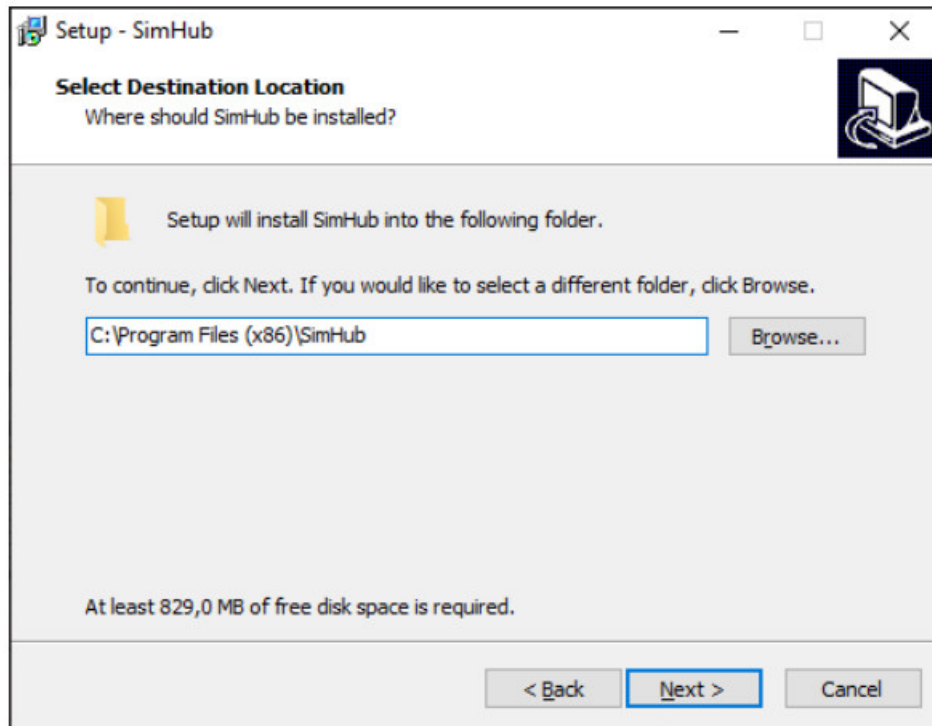
Installation

Unzip the downloaded file and run the setup file:



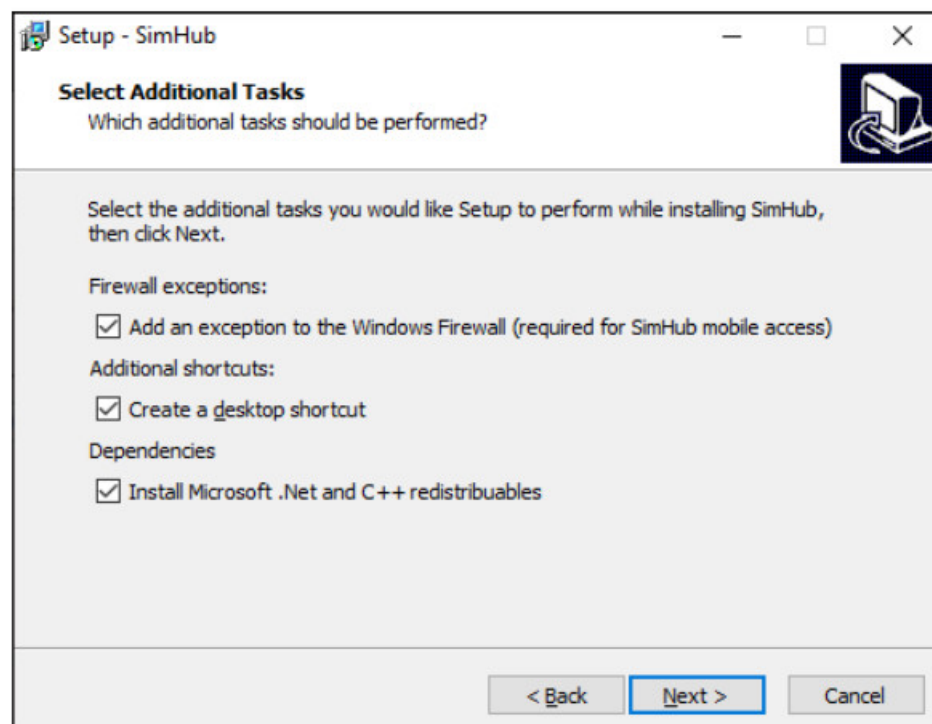
Press 'Next'.

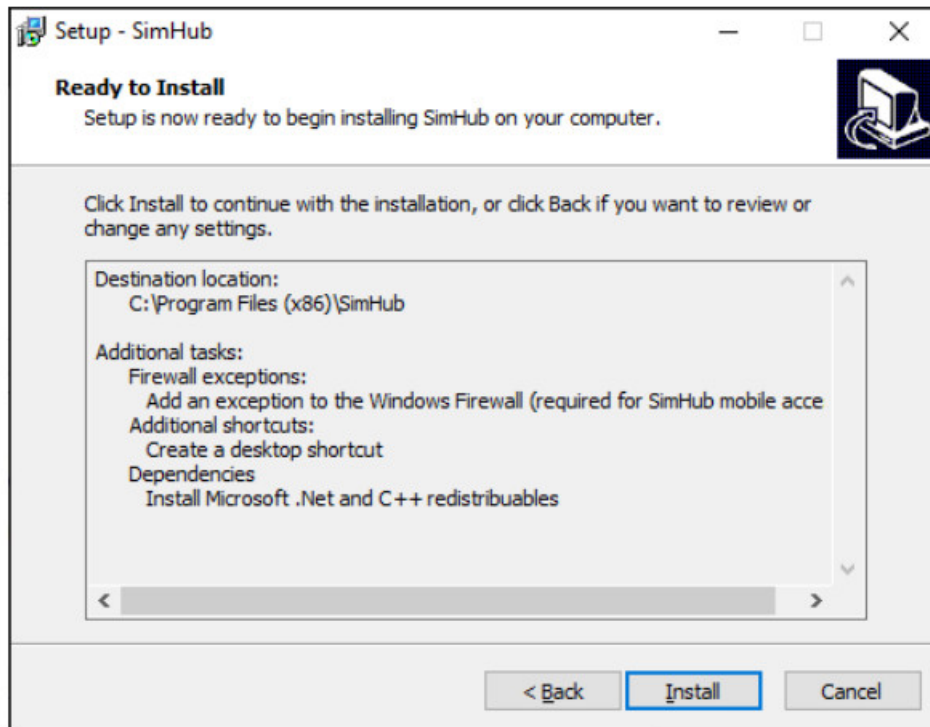
Specify the location where to install the software:



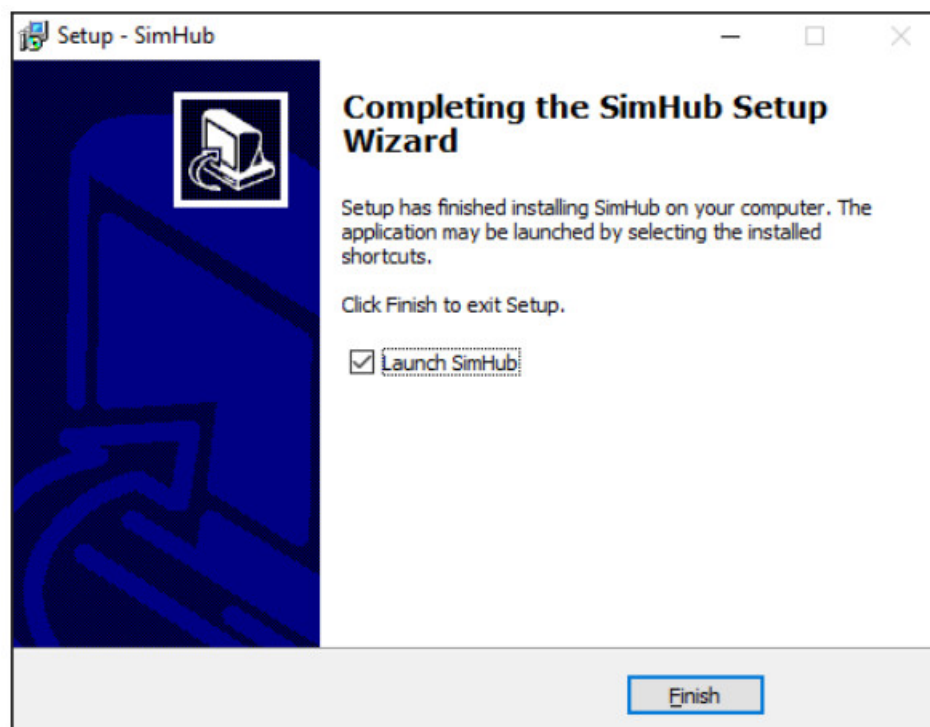
Press 'Next'.

Make sure all options are checked:





Press 'Install'.



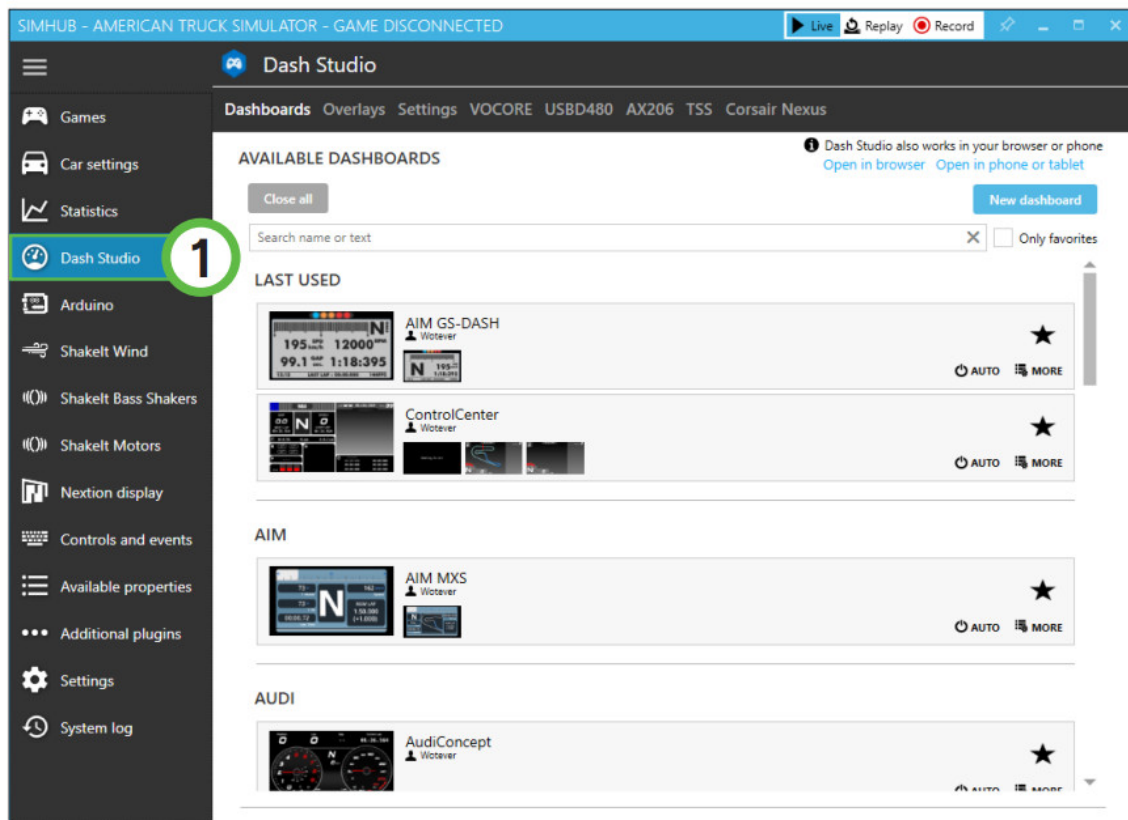
After installation press 'Finish'.

Sim Hub configuration

If you haven't connected the dash with the supplied USB cable to your computer, this is required from this point forward.

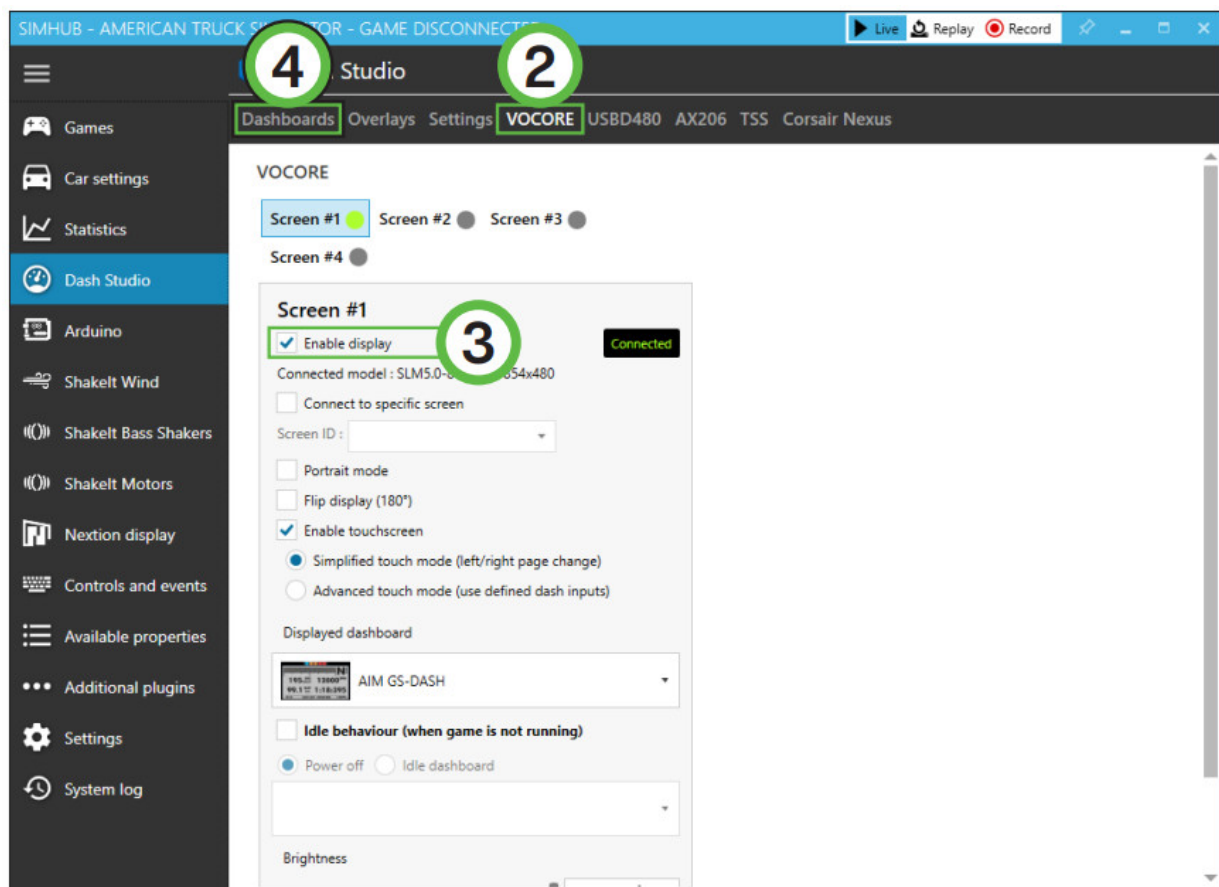
Activation

To use the display with Sim Hub, it needs to be enabled:



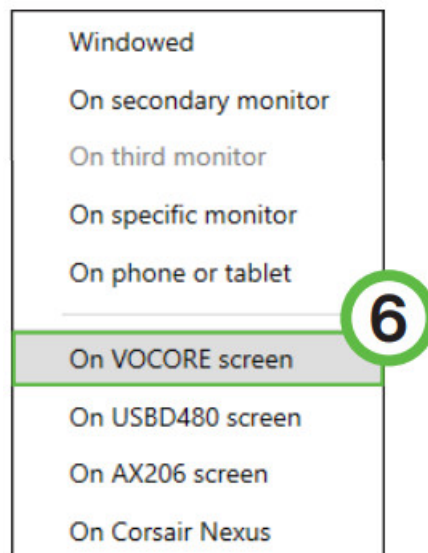
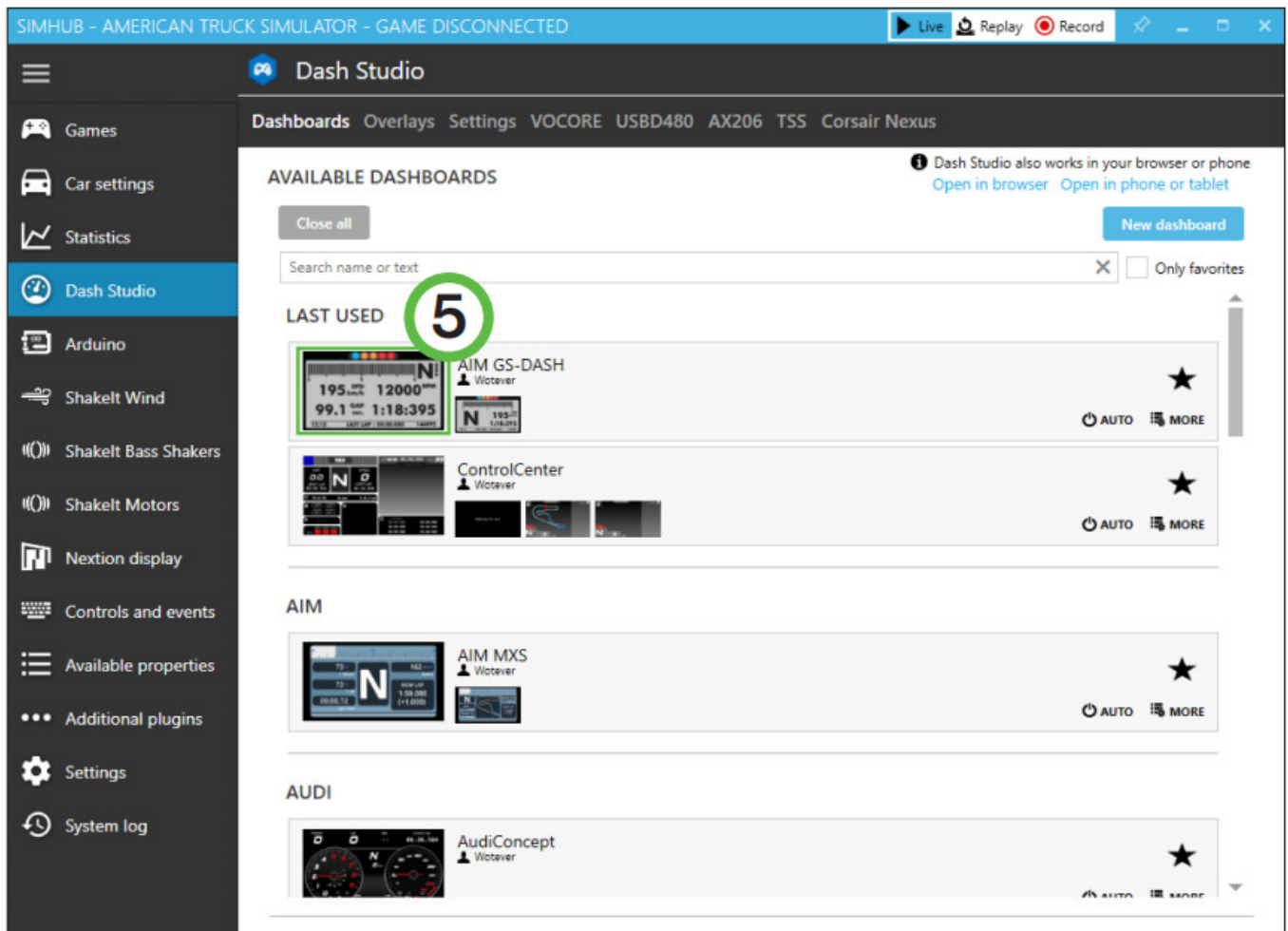
Press 'Dash Studio' (1).

Press 'VOCORE' (2).



In the 'Screen #1' section, check 'Enable display' (3). The 'Connected' indicator will appear on its right-hand side. When the screen is connected, go back to 'Dashboards' (4).

Hover over the dashboard you want to display and press 'Start' (5).



A popup will appear, select 'On VOCORE screen' (6).
The display will now boot using the selected dash.

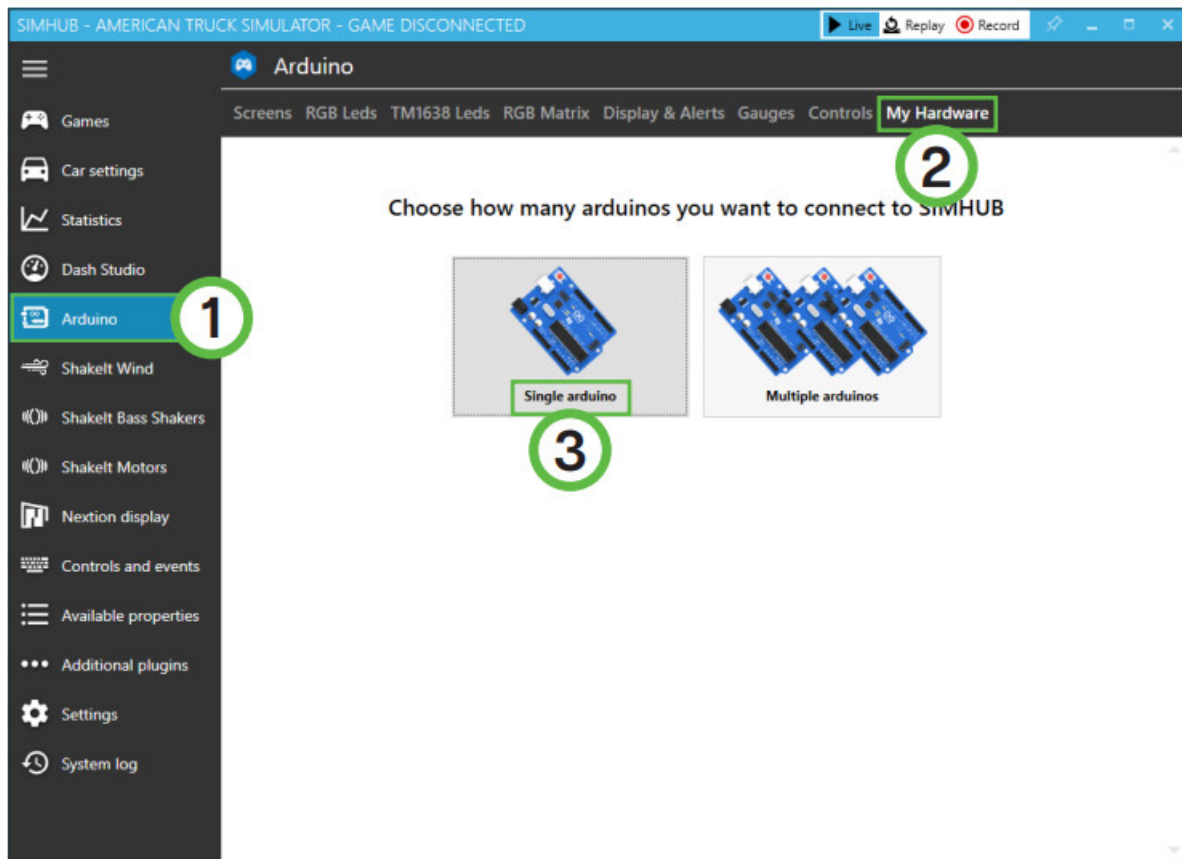
NOTE: Importing or changing dash profiles is not part of this document. For more information on that topic, please see the Sim Hub documentation.

Controlling the LEDs

A sample LED profile can be downloaded from the product page.

> [download led profile](#) <

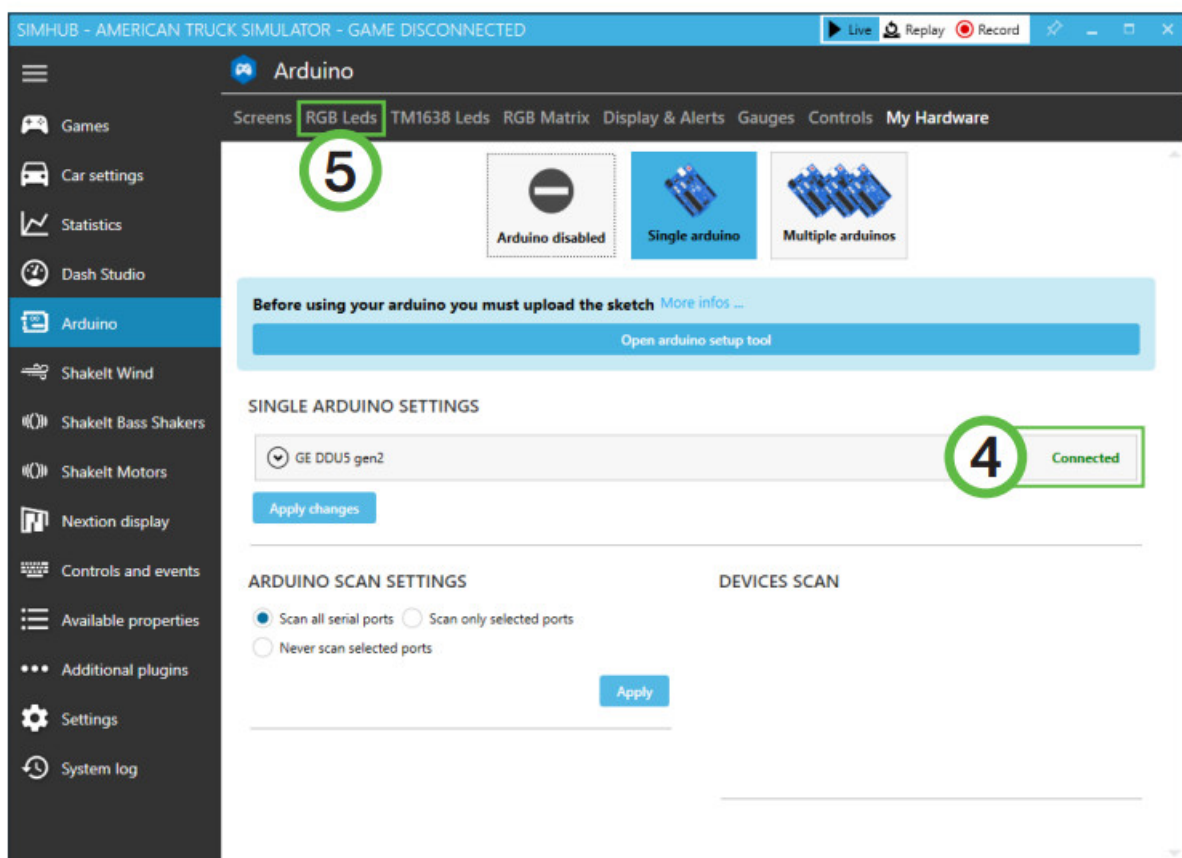
First navigate to 'Arduino' (1) on the left side of the screen.



To configure, first press 'My Hardware' (2). If you only have the DDU5 connected, select 'Single arduino' (3).

To be able to load our LED-profile, we first need to make sure Sim Hub can communicate with the LED section of the DDU5.

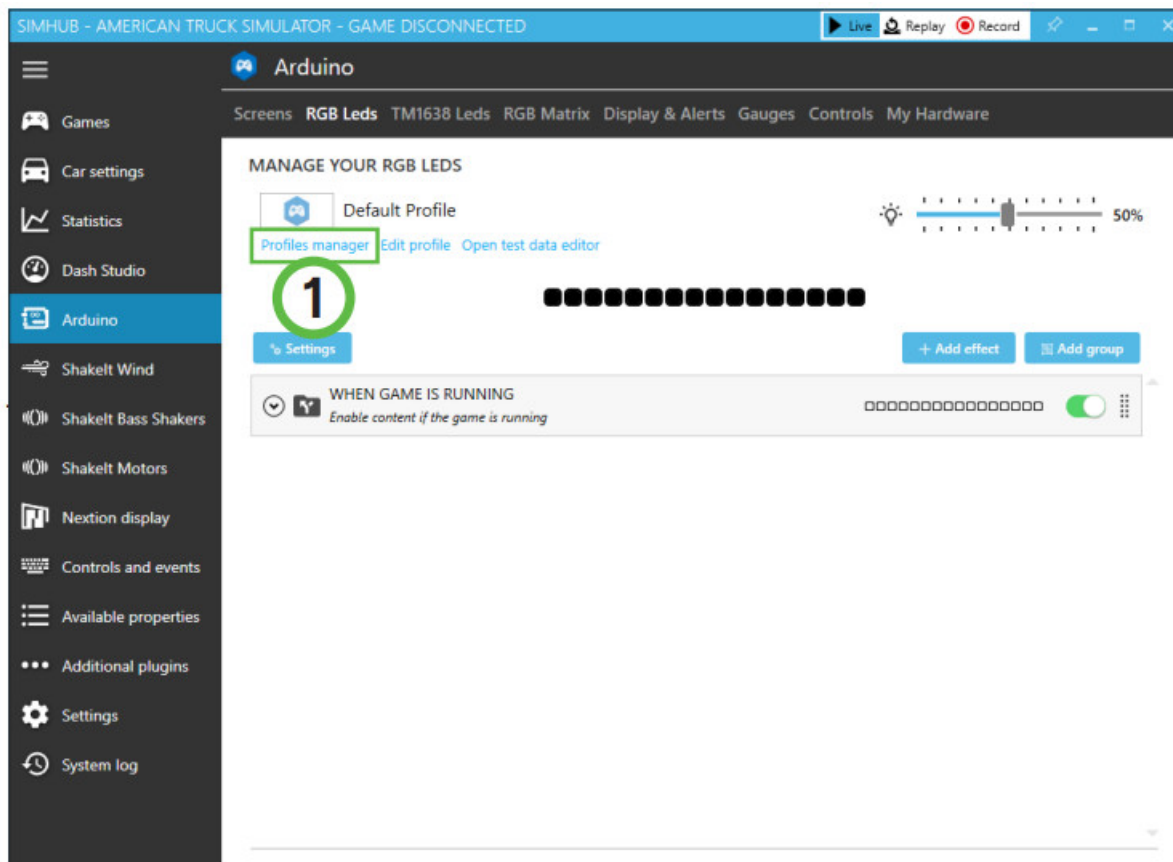
When you have completed the steps on the previous page, you should find a 'Connected' (4) indicator, on the GE DDU5 line.



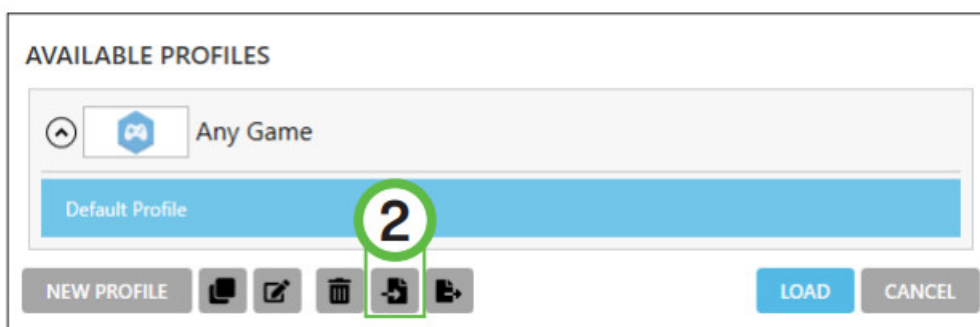
After we have confirmed the connection, press 'RGB Leds' (5) in the top row of options.

Here we can manage LED profiles.

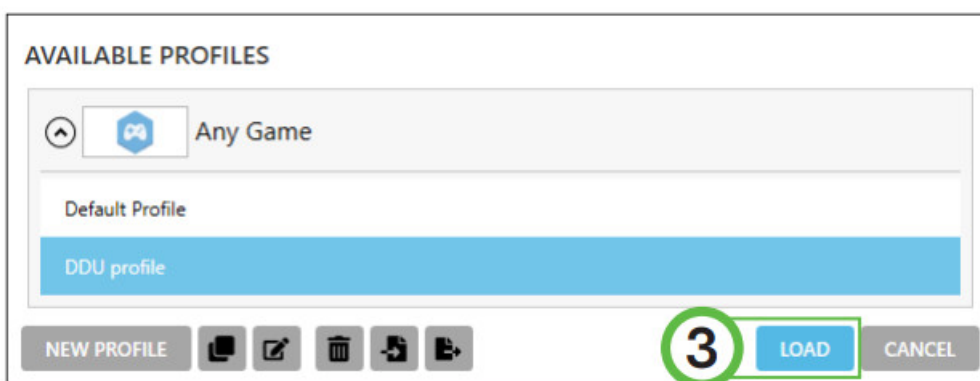
Press the 'Profiles manager' (1) option and proceed to the next page in this manual.



Press the import profile icon (2).



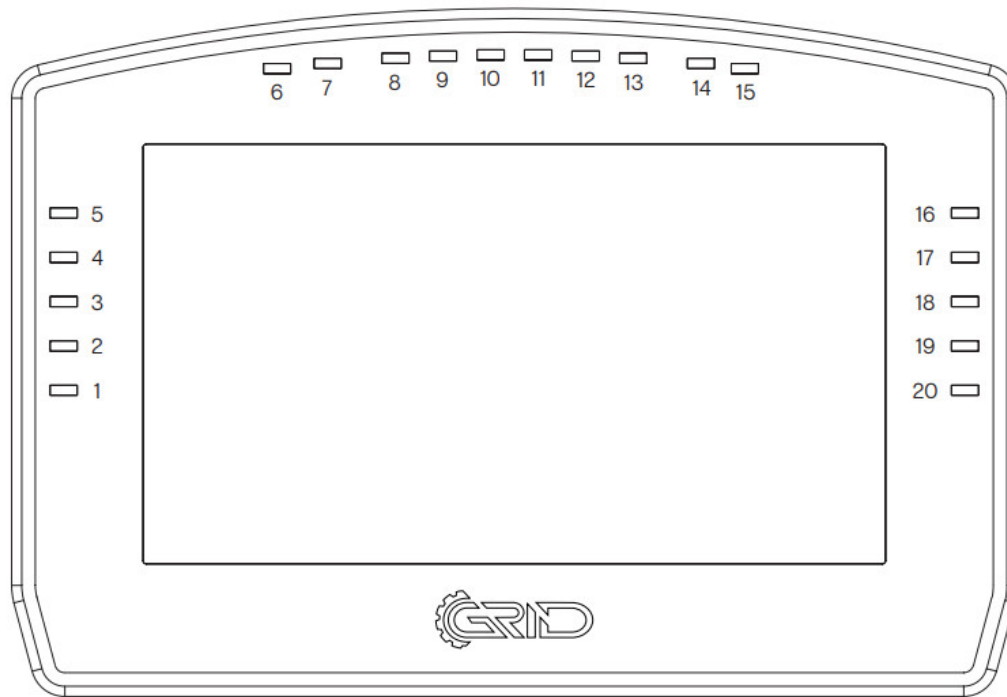
Browse to the location where you stored the LED profile, select it and press 'Open'.



The load the profile, make sure it is selected (DDU profile) and press 'Load' (3).

Changing the LEDs' functions.

To change the LED effects you need to know the LED numbering of the dash. The numbering starts at the bottom left and continues clockwise to the bottom right. See the image below for reference:



There should be enough info in the sample profile to be able to adjust to your liking.

Just keep in mind, you mostly need two values. The number of the LED where you want an effect to start, and the amount of LEDs to use for said effect (in a clockwise direction).

For further assistance and more information on effects, please see the Sim Hub documentation.

Bill of materials

IN THE BOX

#	Part	QTY	Note
A1	Dash DDU5	1	
A2	USB B-mini cable	1	
A3	Bracket Fanatec DD1/DD2	1	
A4	Bracket OSW/SC1/VRS	1	
AS	Bolt M6 X 10 DIN 912	2	Used with Fanatec.
A6	Bolt M5 X 10 DIN 7380	4	To fit mounting bracket to dash.
A7	Washer M6 DIN 125-A	4	
A8	Washer M5 DIN 125-A	4	

Disclaimer for some entries on this list, we supply more than required as spare materials. Don't worry if you have some leftovers, this is intentional.

If you still have some questions regarding assembly of this product or about the manual itself, please refer to our support department. They can be reached at support@sim-lab.eu
Alternatively, we now have a Discord server where there are quite some experienced Sim-Lab customers hanging out. They might just help you along if you ask them nicely ☺

www.sim-lab.eu/discord

www.gridbysimlab.com/discord


If you feel like printing this manual, please consider the environment before doing so. For the best results, make sure you print at 100% scale without borders.

[Product page on the Sim-Lab website:](#)







<https://sim-lab.eu/shop/product/grid-display-ddu-5-3619#attr=2878>

Documents / Resources

	SIM LAB GRID DDU5 Display [pdf] Instruction Manual GRID DDU5, GRID DDU5 Display, Display
---	---

References

-  [GRID](#)
-  [Sim-Lab](#)
-  [GRID Display DDU-5](#)
-  [SimHub, DIY Sim Racing Dash and Hardware – Bring Your Sim Racing Rig To Life](#)
- [User Manual](#)