



SILVERSAVER 1000 Metal Detecting Flatware Retriever Lid User Guide

[Home](#) » [SILVERSAVER](#) » SILVERSAVER 1000 Metal Detecting Flatware Retriever Lid User Guide 

SILVERSAVER 1000 Metal Detecting Flatware Retriever Lid



Contents

- 1 This Quick Start Guide does not replace the User Manual.
- 2 Charging
- 3 Apply Ramekin Savers
- 4 Assembly
- 5 Operation
- 6 Cleaning
- 7 Preparation For Tomorrow
- 8 Documents / Resources
 - 8.1 References
- 9 Related Posts

This Quick Start Guide does not replace the User Manual.

The full-length User Manual is available to download at www.GetSilverSaver.com, and should be read thoroughly to ensure proper use and maximum savings.



Green numbers are references to pages in the full-length manual that contain further information relevant to the section.



Red numbers are references to pages in the full-length manual that contain **important safety information that must be read prior to proceeding.**

Charging

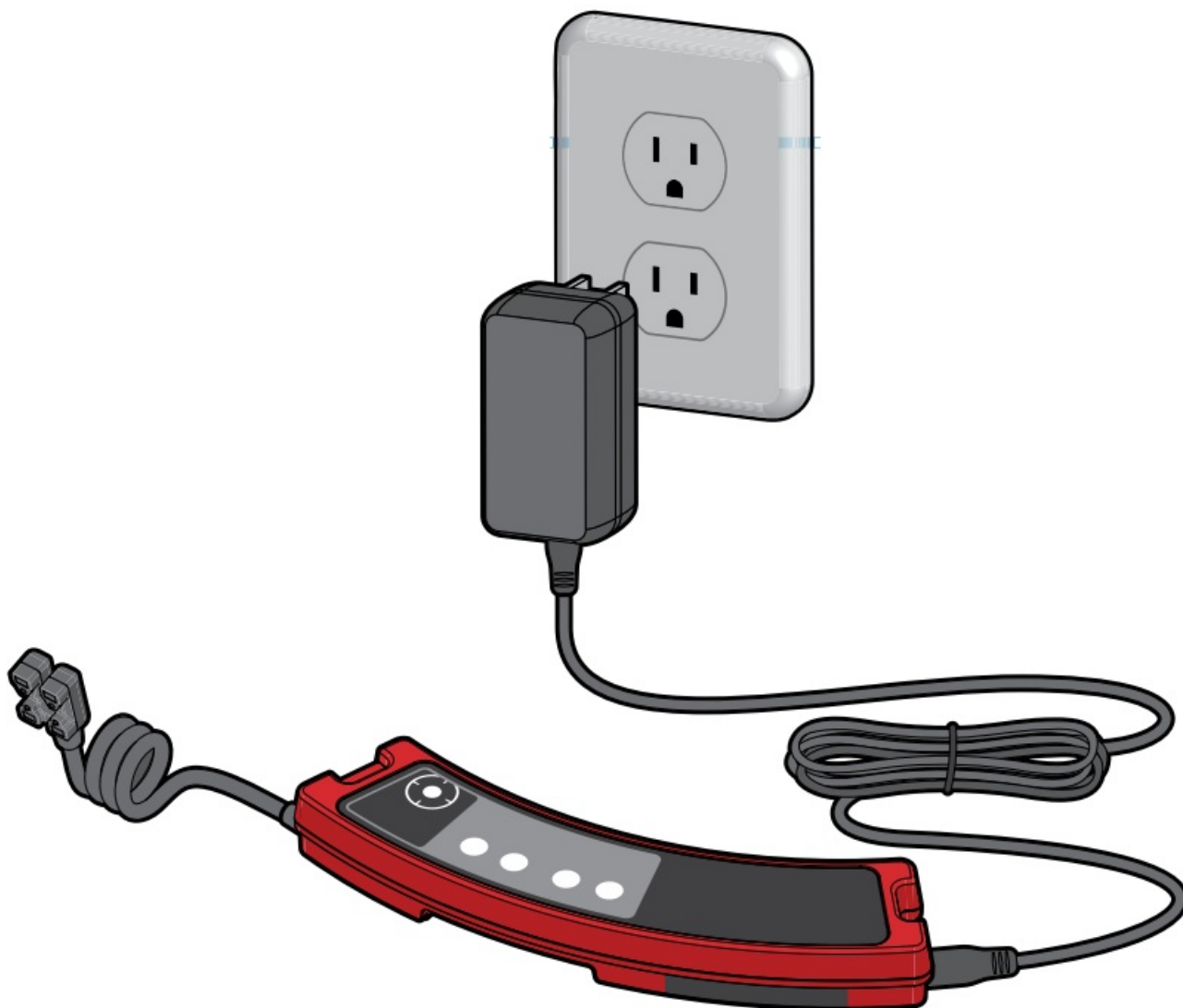


14



15

Charge the control box prior to use.

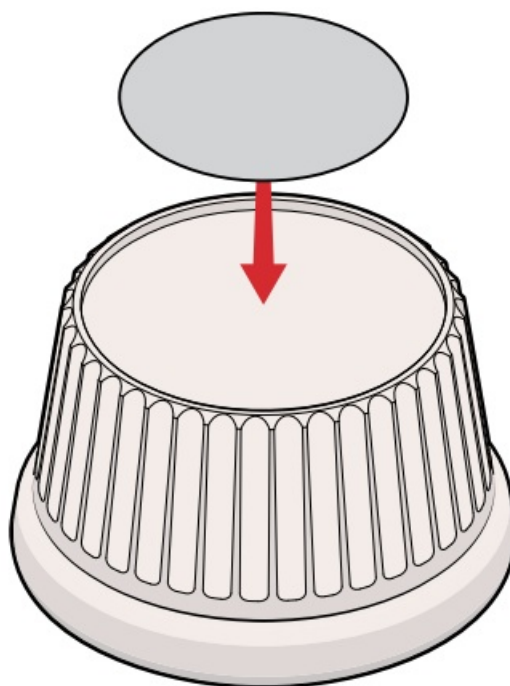


Apply Ramekin Savers



11

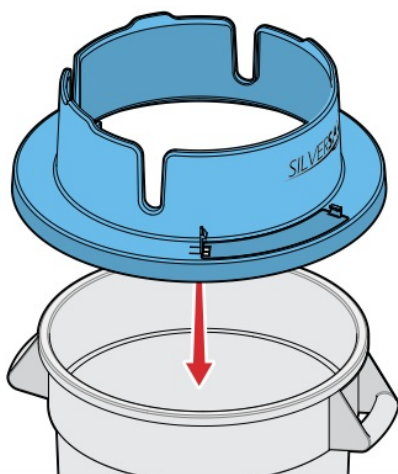
If you plan to use Ramekin Savers to prevent the loss of your non-metallic ramekins, attach them to the bottom of clean, dry ramekins.



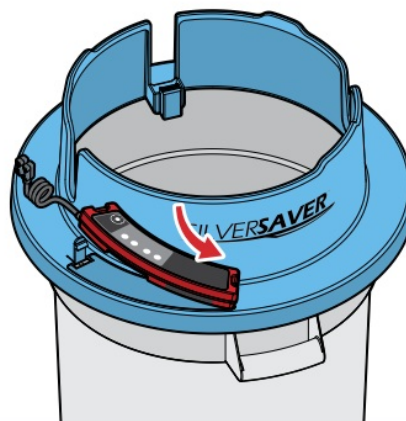
Assembly

i 5 & 6

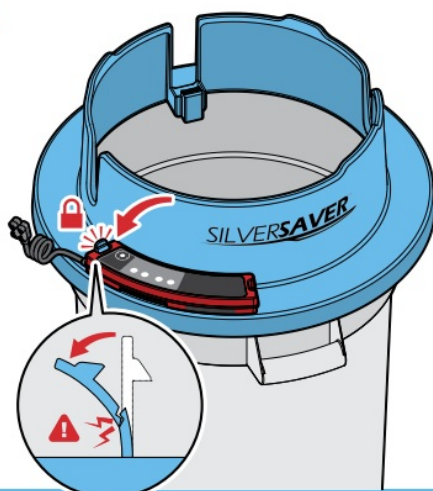
1



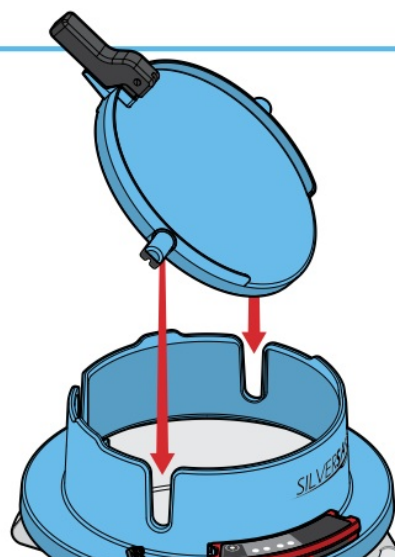
2a...

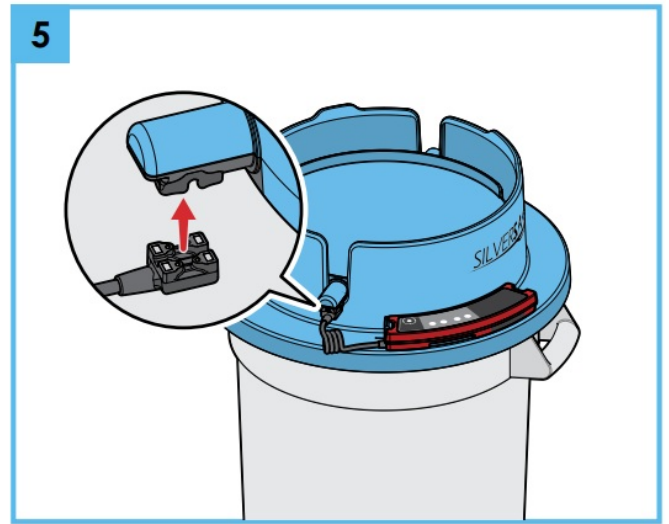
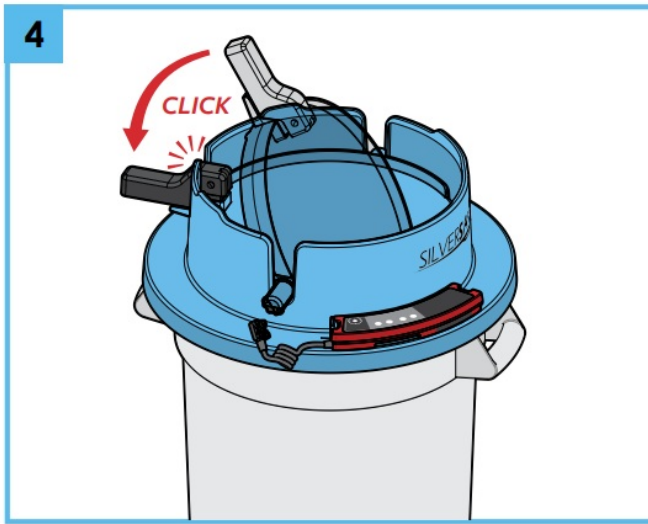


...2b



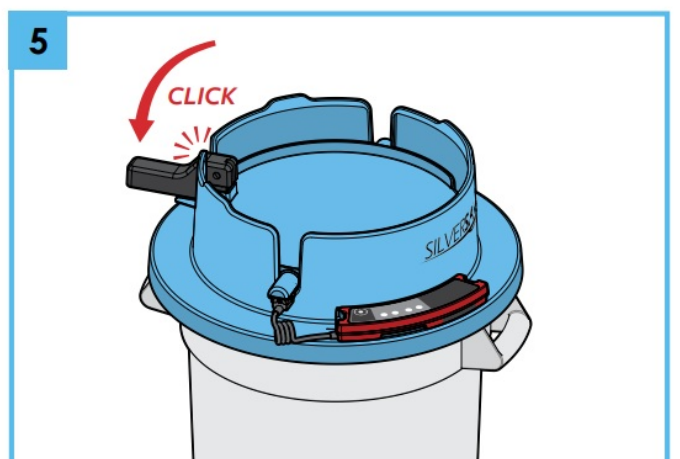
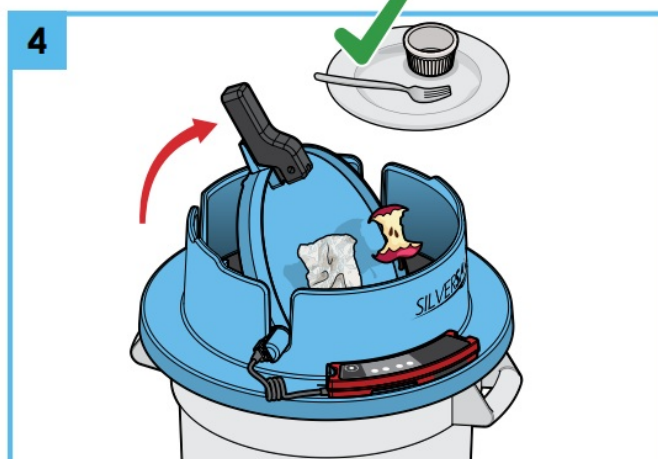
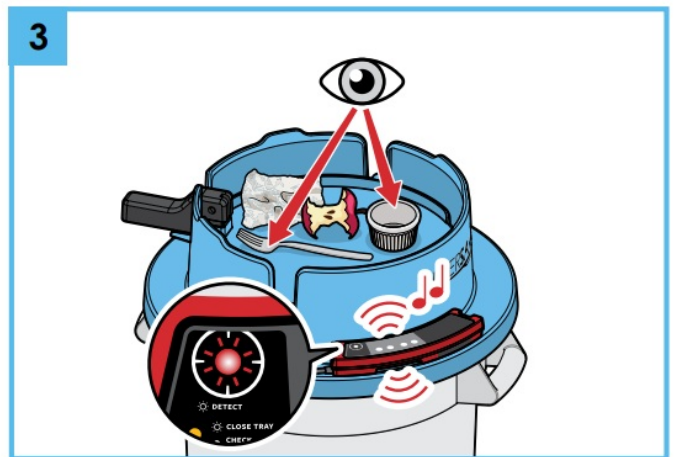
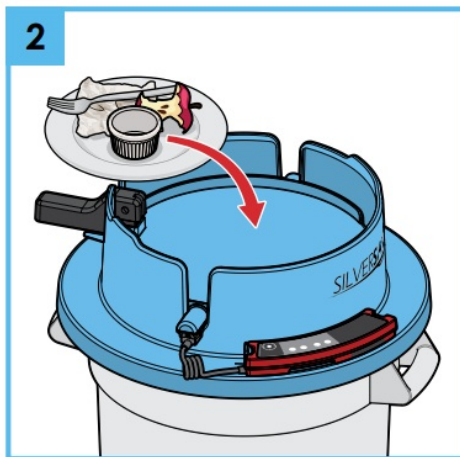
3





Operation

i 8





False Alarms

The SilverSaver 1000® has two detection modes — Full Detection Mode and Reduced Detection Mode (RDM). If foil products are not commonly found in the waste stream, use Full Detection Mode. If waste foil is causing frequent false alarms, use Reduced Detection Mode (RDM).



Common foil products include:

- Aluminum foil
- Some creamer tops
- Some butter wrappings
- Some bottle labels

Full Detection Mode (Default)

With the unit ON, hold down the Reset button  and then press the Volume Up Button . A rising tone and Detection Mode Light (blue) OFF indicates the unit is now in Full Detection Mode.

Reduced Detection Mode (RDM)

With the unit ON, hold down the Reset button  and then press the Volume Down Button . A falling tone and Detection Mode Light (blue) ON indicates the unit is now in Reduced Detection Mode.

Cleaning

i 12 & 13



Preparation For Tomorrow

It is recommended that the battery be charged every night, even though the Low Battery Light (green) may not be flashing.



Documents / Resources

A thumbnail image of the SilverSaver 1000 Quick Start Guide. It shows the title "SilverSaver 1000 Quick Start Guide" at the top, followed by a list of steps: "1. Charging" and "2. Apply Removable Screen". There are small icons and diagrams illustrating the steps.	<p>SILVERSAVER 1000 Metal Detecting Flatware Retriever Lid [pdf] User Guide</p> <p>1000 Metal Detecting Flatware Retriever Lid, 1000, Metal Detecting Flatware Retriever Lid, Detecting Flatware Retriever Lid, Flatware Retriever Lid, Retriever Lid, Lid</p>
---	--

References

- [SS SilverSaver – Smart Flatware Detector](#)