

[Skip to content](#)

Manuals+

User Manuals Simplified.



SILVERCREST Quick Curl Curling Iron Instruction Manual

[Home](#) » [SILVERCREST](#) » SILVERCREST Quick Curl Curling Iron Instruction Manual

Contents [hide](#)

[1 SILVERCREST Quick Curl Curling Iron](#)

[2 Introduction](#)

[3 Package contents](#)

[4 Appliance description](#)

[5 Technical data](#)

[6 Safety information](#)

[7 Unpacking](#)

[8 First use](#)

[9 Operation](#)

[10 Curling your hair](#)

[11 Cleaning and care](#)

[12 Troubleshooting](#)

[13 Kompernass Handels GmbH warranty](#)

[14 Service](#)

[15 Documents / Resources](#)

[15.1 References](#)

[16 Related Posts](#)

SILVERCREST®

SILVERCREST Quick Curl Curling Iron



Introduction

Congratulations on the purchase of your new appliance.

You have selected a high-quality product. The operating instructions are part of this product. They contain important information about safety, use and disposal. Before using the product, please familiarise yourself with all operating and safety instructions. Use the product only as described and for the range of applications specified. Please also pass these operating instructions on to any future owner.

Proper use

This appliance is intended for styling human hair and is intended exclusively for private use. It is not intended for use on animals or in commercial or industrial environments.

The appliance is not intended for any other purpose, nor for use beyond the scope described. No claims of any kind will be accepted for damage arising as a result of incorrect use. The risk is borne solely by the user.

Package contents

This appliance is supplied with the following components as standard:

- Quick Curl
- Protective cap
- Hair template

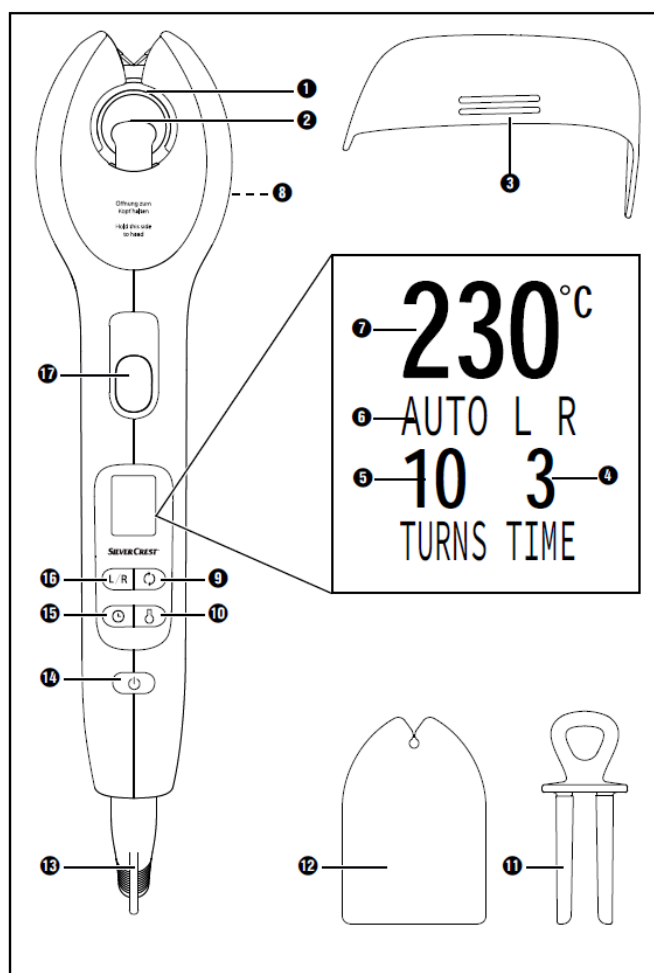
- Cleaning accessory
- Operating instructions

NOTE

- Check the package for completeness and signs of visible damage.
- If the delivery is incomplete or damage has occurred as a result of defective packaging or during transport, contact the Service hotline (see section Service).

Appliance description

1. Curling chamber
2. Roller
3. Protective cap
4. Time display
5. Turns display
6. Curl direction display
7. Temperature display
8. Release button
9. Turns button
10. 0 Temperature button
11. Cleaning accessory w
12. Hair template
13. Hanger
14. On/Off button
15. Time button
16. Curl direction button
17. Start button



Technical data

Power supply 110 – 240 V ~ (AC), 50/60 Hz
 Power consumption 24 W
 II / (double insulation)
 Protection class

Safety information

RISK OF ELECTRIC SHOCK

- Connect the appliance only to mains power sockets supplying a mains power voltage of 110 – 240 V ~, 50/60 Hz.
- To prevent accidents, have defective plugs and/or power cables replaced immediately by an authorised specialist technician or our Customer Service department.
- Remove the plug from the mains power socket in case of operating malfunctions and before you clean the appliance.
- Always pull on the plug to disconnect the appliance from the mains; never pull on the power cable itself.
- Do not kink or crush the power cable, and route the cable so that it cannot be stepped on or tripped over.
- Make sure that the power cable does not become wet or moist during use. Route the cable in such a way that it cannot be crushed or damaged.
- To prevent risks, stop using the appliance immediately if it is damaged.
- Do not wrap the power cable around the appliance, and protect it from being damaged.
- Do not use extension cables – they will make it difficult to disconnect the appliance quickly in an emergency.
- Never touch the appliance, the power cable or the power plug with wet hands.
- Never submerge the appliance in liquids or never allow liquids to penetrate the appliance housing. Do not expose the appliance to humidity and do not use it outdoors. If any liquid gets into the housing, disconnect the appliance from the mains power socket immediately and have it repaired by a qualified technician.
- Unplug the appliance immediately after use. The appliance is only completely free of electrical power when unplugged.
- Ensure that objects can never penetrate into the inside of the appliance, especially metal hair clips, grips or hairpins.
- If the appliance is being used in the bathroom, disconnect the plug from the mains power socket after use as the close proximity of water represents a hazard – even when the appliance is switched off.

Do not use this appliance near bathtubs, showers or other containers filled with water. The proximity of water is hazardous, even if the appliance is switched off. For additional protection, we recommend that you install a residual current circuit breaker with an activation power rating of no more than 30 mA for the power circuit in the bathroom. Ask your electrician for advice.

WARNING! RISK OF INJURY!

- Never leave a switched-on appliance unsupervised.
- Never place the appliance close to sources of heat, and always protect the power cable from damage.
- Do not operate the appliance if it has been dropped or is damaged in any way. Have the appliance checked and/or repaired by qualified technicians if necessary.
- Do not open the housing or attempt to repair the appliance yourself. This can lead to risks and also invalidates the warranty. Defective appliances should be repaired by authorized specialists only.
- The appliance components can get hot during operation. Therefore, only touch the handle and the buttons.
- This appliance may be used by children of the age of 8 years or more and by persons with reduced physical, sensory or mental capabilities or lack of experience and/or knowledge if they are being supervised or have been instructed with regard to the safe use of the appliance and have understood the potential risks. Do not allow children to play with the appliance. Cleaning and user maintenance should not be carried out by children, unless they are under supervision.
- Never switch the appliance on if the protective cap is on.
- Never put on the protective cap when the appliance is still hot.
- Use only the supplied original accessories, as these have been optimised for interaction with the appliance. Other parts may not be adequately safe.
- Keep the air inlet and outlet openings clear to ensure unimpaired air flow. Otherwise the appliance may overheat.
- Exercise caution when using hair spray, water atomizers, etc. The air flow may blow these substances directly into your eyes. These substances must also not be allowed to penetrate the appliance, as they may be inflammable, caustic or electrically conductive.

NOTE

- No user action is required to switch the product between 50 and 60 Hz. The product adapts automatically to either 50 or 60 Hz.

Unpacking

- Remove all parts of the appliance and the operating instructions from the box.
- Remove all packaging material.

WARNING! RISK OF SUFFOCATION!

- Do not allow children to play with packaging materials. There is a risk of suffocation.

Disposal of the packaging

- The packaging protects the appliance from damage during transport. The packaging materials have been selected for their environmental friendliness and ease of disposal, and are therefore recyclable.
- Returning the packaging to the material cycle conserves raw materials and reduces the amount of waste that is generated. Dispose of packaging materials that are no longer needed in accordance with applicable local regulations.
- Dispose of the packaging in an environmentally friendly manner.
Note the labelling on the packaging and separate the packaging material components for disposal if necessary. The packaging material is labelled with abbreviations (a) and numbers (b) with the following meanings:
1–7: plastics,
20–22: paper and cardboard,
80–98: composites.

First use

- Before you use the appliance, ensure that ...
the appliance and its accessory parts are in perfect working condition,
all packaging materials and any protective films have been removed from the appliance.

Preparing your hair

- Ensure that your hair is free of any styling or care products. This does not apply to heat protection spray.
- Your hair must be dry.
- Your hair must be combed and free from knots.

Operation

NOTE

- You may notice a slight smell when using the appliance for the first time. This is normal and the smell dissipates after a short time.

Settings

NOTE

- All buttons except the Release button 8 and the Start button u sound a beep when pressed.
1. Insert the plug into a mains power socket. You will hear a beep, and OFF appears on the display.
 2. Press the On/Off button r. You will hear a beep and the temperature display 7 flashes. The set temperature flashes several times before the current temperature is displayed. The appliance now heats up and the current temperature rises. As soon as the set temperature is reached, you will hear 2 beeps and Temperature 7 will light up permanently.

NOTE

The set temperature may be briefly exceeded occasionally and then drop again. This happens because the appliance is trying to maintain the set temperature and reheats repeatedly.

3. Press the Temperature button 0 until the desired temperature appears on the display. The temperature depends on your hair type:

Temperature	Hair type
130°C	very fine, stressed and damaged hair
150°C	fine hair
170°C	normal hair
190°C	wavy hair
210°C	thick or wavy hair
230°C	thick, curly hair

;

NOTE

If you are not sure what temperature is ideal for your hair, increase the temperature gradually. Start with a low temperature and increase the temperature until you are happy with the result.

4. Press the Curl direction button z until the desired direction of the curls is set:

Curl direction display 6	Curl direction
R	The curls are always turned in a clockwise direction
L	The curls are always turned in an anticlockwise direction
AUTO	The curls are turned alternately in a clockwise and anticlockwise direction

;

5. Press the Turns button 9 to set the number of revolutions. You can read off the set number from the Turns display 5. The number of turns depends on the length of the hair:

Number of turns	Hair length
5–7	approx. 20–30 cm
8–10	30–50 cm
11–12	> 50 cm

;

NOTE

The diameter/size of the curls is always the same!

6. 6) Select the time for which the strand of hair is to stay on the roller 2 and be heated according to your hair type and the desired intensity of the curls. For gentle waves, select a short time. For tighter curls, choose the longest possible time. Bear in mind that thick hair needs a longer time than fine hair to achieve the same result. To set the time, press the Time button the Time display 4. t until the desired time appears in

Selectable time	Temperature
3–12 seconds	130–230°C

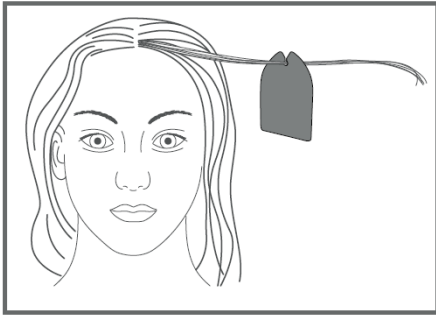
;

You have now made all required settings. You can change the settings at any time by pressing the relevant button if you ascertain that the time/temperature/turning speed is not ideal for your hair.

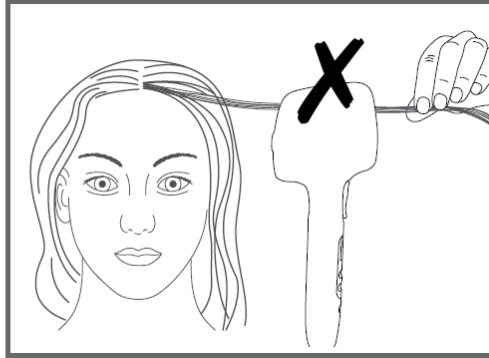
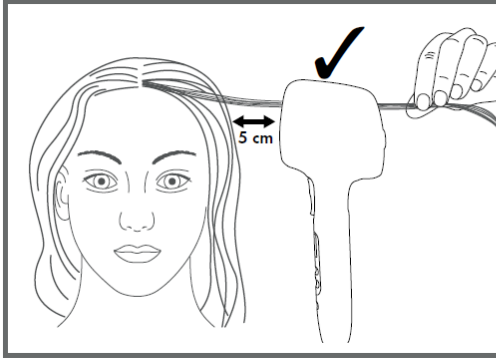
Curling your hair

Once you have made all settings on the appliance and the Temperature display 7 is permanently lit up (temperature reached):

1. Always use the hair template w to separate the hair strands and prevent the hair from getting caught in the curling chamber 1. Make sure that the hair strand is only as thick as the punched hole in the hair template w.



- When placing the hair strand into the curling chamber 1, the opening must be facing towards the head. Hold the appliance around 5 cm from your scalp. The strand of hair must be inserted straight and taut. To prevent the hair from getting entangled, make sure that the hair strand is completely in the curling chamber 1.



- Let go of the hair strand and press and hold the Start button u. The roller 2 starts turning and winding up the strand of hair.
- As soon as the set number of turns has been reached, the roller 2 stops and the appliance beeps. You can now stop pressing the Start button u. B The set time starts counting down. As soon as the time has elapsed, you will hear 3 beeps."

NOTE

If a strand of hair gets caught in the curl chamber 1, the roller 2 stops, you will hear 3 beeps and "Er2" appears on the display. Press the Release button 8 to release the mechanism and pull the hair strand out of the device. Then press the On/Off button r and make the desired settings again to continue curling.

- Pull the appliance away from your head so that the strand slips out of the curling chamber 1.
- Proceed in the same way with the other strands.
- When you have finished styling your hair, press and hold the On/Off button r until you hear a beep and OFF appears on the display.
- Remove the plug from the mains power socket.
- As soon as the appliance has cooled down, place the protective cap 3 onto the appliance.

Automatic switch-off

This appliance is fitted with an automatic switch-off system. After approximately 55 minutes, the appliance starts flashing. If you do not press any buttons for another 5 minutes, the appliance will switch off automatically.

NOTE

The automatic switch-off is designed merely as a safety feature in case you forget to switch off the appliance! It is not intended as a substitute for switching off the appliance with the On/Off button r and pulling out the plug.

Cleaning and care

RISK OF ELECTRIC SHOCK

Before cleaning the appliance, always pull out the plug from the mains power socket. There is a risk of electric shock!

WARNING! RISK OF INJURY!

Allow the appliance to cool down fully before cleaning it. Risk of burns!

CAUTION! PROPERTY DAMAGE!

Do not use any aggressive, abrasive or chemical cleaning agents! These could damage the surfaces of the appliance.

- Clean the appliance using only a lightly moistened cloth.
- Clean the hair template w with a damp cloth.
- To clean the curling chamber 1 and the roller 2:
Fold the rubber tab forward and hold it firmly.
Slide the cleaning accessory q into the curling chamber 1 and turn it several times around the roller 2.
Pull out the cleaning accessory q and fold the rubber tab back again.
- Allow the appliance to dry completely before reusing it or putting it away.

Storage

- Place the protective cap 3 on the cooled-down appliance.
- You can hang up the appliance by the hanger e.
- Store the appliance in a dry and dust-free location.

Disposal of the appliance

Never dispose of the appliance in your normal domestic waste. This product is subject to the provisions of the European Directive 2012/19/EU (Waste Electrical and Electronic Equipment).

Dispose of the appliance through an approved disposal facility or your municipal waste facility. Please comply with all applicable regulations. Please contact your waste disposal facility if you are in any doubt. Your local community or municipal authorities can provide information on how to dispose of the worn-out product. The product is recyclable, subject to extended producer responsibility and is collected separately.

Troubleshooting

Fault	Cause	Remedy
The appliance is not working.	• The plug is not inserted into a power socket.	• Insert the plug into a mains power socket.
	• The appliance is not switched on.	• Switch on the appliance.
	• The appliance is defective.	• In this case, contact Customer Services. • Press the Release button 8 to release the mechanism and pull the hair strand out of the device.
The roller stops, you will hear 3 beeps and "Er2" appears on the display.	• The hair could not be pulled in correctly, and the strand is caught in the curl chamber 1.	Then press the On/Off button r and make the desired settings again to continue curling. Make sure that there are no knots in the hair and try to form another curl.

Kompernass Handels GmbH warranty

Dear Customer,

This appliance has a 3-year warranty valid from the date of purchase. If this product has any faults, you, the buyer, have certain statutory rights. Your statutory rights are not restricted in any way by the warranty described below.

Warranty conditions

The warranty period starts on the date of purchase. Please keep your receipt in a safe place. This will be required as proof of purchase.

If any material or manufacturing fault occurs within three years of the date of purchase of the product, we will either repair or replace the product for you or refund the purchase price (at our discretion). This warranty service requires that you present the defective appliance and the proof of purchase (receipt) within the three-year warranty period, along with a brief written description of the fault and of when it occurred. If the defect is covered by the warranty, your product will either be repaired or replaced by us. The repair or replacement of a product does not signify the beginning of a new warranty period.

Warranty period and statutory claims for defects

The warranty period is not prolonged by repairs effected under the warranty. This also applies to replaced and repaired components. Any damage and defects present at the time of purchase must be reported immediately after un-packing. Repairs carried out after expiry of the warranty period shall be subject to a fee.

Scope of the warranty

This appliance has been manufactured in accordance with strict quality guide-lines and inspected meticulously prior to delivery. The warranty covers material faults or production faults. The warranty does not extend to product parts subject to normal wear and tear or to fragile parts which could be considered as consumable parts such as switches, batteries or parts made of glass. The warranty does not apply if the product has been damaged, improperly used or improperly maintained. The directions in the operating instructions for the product regarding proper use of the product are to be strictly followed. Uses and actions that are discouraged in the operating instructions or which are warned against must be avoided.

This product is intended solely for private use and not for commercial purposes. The warranty shall be deemed void in cases of misuse or improper handling, use of force and modifications / repairs which have not been carried out by one of our authorised Service centres.

Warranty claim procedure

To ensure quick processing of your case, please observe the following instructions:

- Please have the till receipt and the item number (e.g. IAN 123456_7890) available as proof of purchase.
- You will find the item number on the type plate on the product, an engraving on the product, on the front page of the operating instructions (below left) or on the sticker on the rear or bottom of the product.
- If functional or other defects occur, please contact the service department listed either by telephone or by e-mail.
- You can return a defective product to us free of charge to the service address that will be provided to you. Ensure that you enclose the proof of purchase (till receipt) and information about what the defect is and when it occurred. You can download these instructions along with many other manuals, product videos and installation software at www.lidl-service.com.
This QR code will take you directly to the Lidl service page (www.lidl-service.com) where you can open your operating instructions by entering the item number (IAN) 354056_2010.

Service

Service Great Britain

Tel.: 0800 404 7657

E-Mail: kompernass@lidl.co.uk

Service Ireland

Tel.: 1890 930 034

(0,08 EUR / Min., (peak))

(0,06 EUR / Min., (off peak)) E-Mail: kompernass@lidl.ie

IAN 354056_2010

Importer

Please note that the following address is not the service address. Please use the service address provided in the operating instructions.

KOMPERNASS HANDELS GMBH
BURGSTRASSE 21
44867 BOCHUM
GERMANY
www.kompernass.com

Documents / Resources



[SILVERCREST Quick Curl Curling Iron](#) [pdf] Instruction Manual
Quick Curl Curling Iron

References

- [Kompernaß - Online shop for accessories and spare parts](#)
- [de/](#)

Manuals+,

- [home](#)
- [privacy](#)