



# silva homeline SMS 6502 Hand Blender Set Instruction Manual

[Home](#) » [silva homeline](#) » silva homeline SMS 6502 Hand Blender Set Instruction Manual 

silva homeline SMS 6502 Hand Blender  
Set Instruction Manual

**STABMIXERSET – SMS 6502**

**silva**  
homeline

## SAFETY INSTRUCTIONS & INSTRUCTION MANUAL



Read the operating instructions carefully before using the appliance and keep them in a safe place for future reference.



### Contents

- 1 Safety instructions
- 2 Before use
- 3 Parts and accessories description
- 4 Operation
- 5 cleaning
- 6 Technical data
- 7 Notes on environmental protection
- 8 Warranty / Guarantee
- 9 Documents / Resources
  - 9.1 References


### Safety instructions

- The device must not be used by children. The device and its connecting cable must be kept away from children.
- Children must not play with the device.
- Devices can be used by persons with reduced physical, sensory or mental capabilities or lack of experience and/or knowledge if they have been given supervision or instruction concerning use of the device in a safe way and have understood the hazards involved.
- After unpacking, check the device for damage and completeness. If the device or the power cable is damaged, it must not be used. Contact your specialist dealer immediately.
- It is recommended that you do not use this appliance with extension cords or multiple sockets. If this is unavoidable, always make sure that the cords used comply with general safety guidelines.
- This device is designed for indoor use only. Do not use it outdoors.
- Be careful not to damage the power cord, otherwise a short circuit may occur.
- Do not crush the power cord or place other objects on it.
- Do not pull on the cable.
- Do not bend the cable too much or tie knots in it.
- Make sure that the cable does not touch hot surfaces (e.g. stove top).
- Do not cut the cable.
- When unplugging the appliance, never pull on the power cord; always grasp the plug.
- Do not let the power cord hang down from the work surface.
- Never touch the device or the power cord with wet or damp hands.
- Do not touch the tips of the plug when unplugging the device.
- Do not use the device in the bathroom or other rooms with high humidity.
- Unplug the power cord
  - when you replace the accessories,
  - before each cleaning,
  - in the event of faults/malfunctions during operation and
  - after each use.- Only use accessories as recommended and described in the instructions.
- Always store the device so that it is out of the reach of children.
- Handle the product with care. It may be damaged by impacts, blows or falls from even a small height.
- Modifying or altering the product is not permitted for safety reasons.
- Do not open the housing of the device; there are no controls inside.
- Never carry out repairs yourself. If the device is damaged, take it to an authorized workshop for repair.
- If the power cable of the device is damaged, the device must not be used. Take it to an authorized specialist workshop for repairs. Repairs to electrical devices must be carried out by qualified personnel, as safety regulations must be observed and in order to avoid hazards. This also applies to replacing the power cable.
- Any warranty claim will be void if the points listed in the operating instructions are not observed.
- Packaging material: Packaging materials such as plastic bags or polystyrene parts are dangerous for children. Keep these parts away from children. Many packaging materials are recycled so make sure they are disposed of correctly, as you are making an important contribution to protecting the environment .
- Never touch moving parts of the device, risk of injury!

- Never reach into the mixing bowl during the mixing process !
- The measuring cup is not microwave safe!
- Do not fill the measuring cup with liquids that are too hot (max. 60°).
- To avoid the risk of injury, do not switch the device on until you have prepared the blender jar.
- Keep hair, ribbons, clothing, dough scrapers or other kitchen utensils away from the appliance when in operation.
- The device is not intended for commercial use, but exclusively for use in the home, in coffee kitchens in offices or workshops, as well as in apartment buildings, bed and breakfasts , motels or bed & breakfast establishments, etc.
- This manual is intended to familiarize you with the safety instructions and functions of this device . Please keep this manual in a safe place for future reference.

#### **Intended Use:**

- The device is intended exclusively for chopping/mixing/beating the specified foods.
- The device may only be used with the accessories supplied.
- This appliance is not suitable for chopping hard foods. Do not put in any hard foods such as nuts or chocolate.
- Use the device only for the functions described in this manual.
- Any use other than that described in the instructions is considered improper and may result in serious injury and damage to the device.

 **DANGER:** Any damage caused by improper use resulting from failure to follow these operating instructions or the safety instructions will void the warranty.

 **WARNING:** Misuse of the device can lead to injuries!

#### **Short-term operation:**

The device is designed for short operation (KB 30 sec.):

- Use for max. 30 seconds; (for very hard foods only 10 seconds)
- Allow to cool for at least 1 minute;
- Repeat max. 3 times;
- Allow to cool for at least 15 minutes (room temperature).

#### **Before use**

##### **Unpacking the device:**

- Remove the packaging material.
- Packaging materials such as plastic bags or polystyrene parts are dangerous for children. Therefore, keep these parts away from children. HAZARD OF SUFFERING!
- Many packaging materials are recycled so make sure they are disposed of correctly, as you are making an important contribution to protecting the environment.

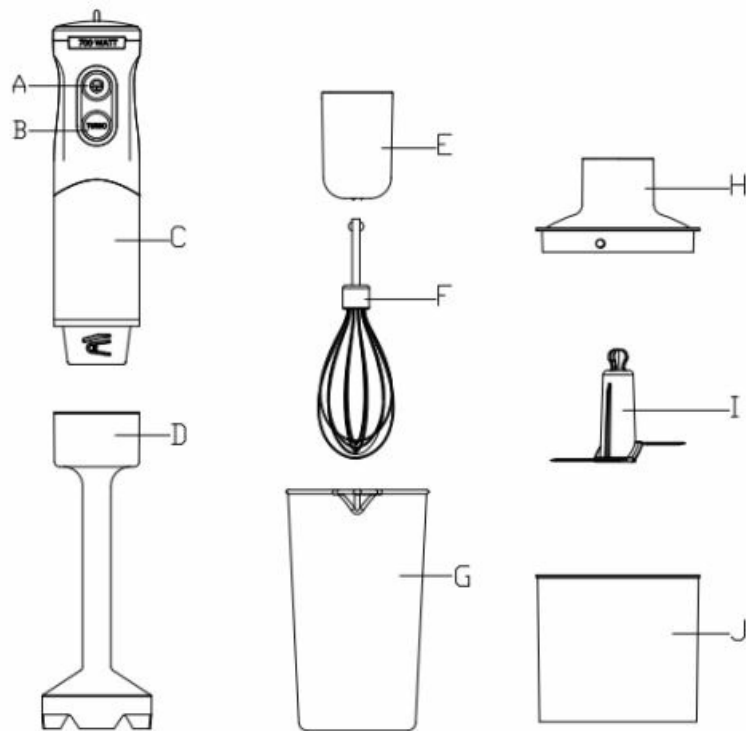
##### **Mains connection:**

- be connected to a correctly installed, freely accessible household socket.
- The mains voltage must correspond to the voltage indicated on the rating plate of the device: 220-240 V ~ 50/60 Hz.
- The device complies with the directives that are binding for the CE marking.

##### **Before first use:**

- Clean all parts as described under “Cleaning” before using the device for the first time.

#### **Parts and accessories description**



- A Power level 1 button
- B Power level 2 button
- C Motor unit
- D Hand blender
- E Whisk holder
- F Whisk
- G Measuring/mixing cup 700 ml
- H Multi-chopper attachment
- I Knife multi-chopper
- J Cup multi-chopper (500 ml)

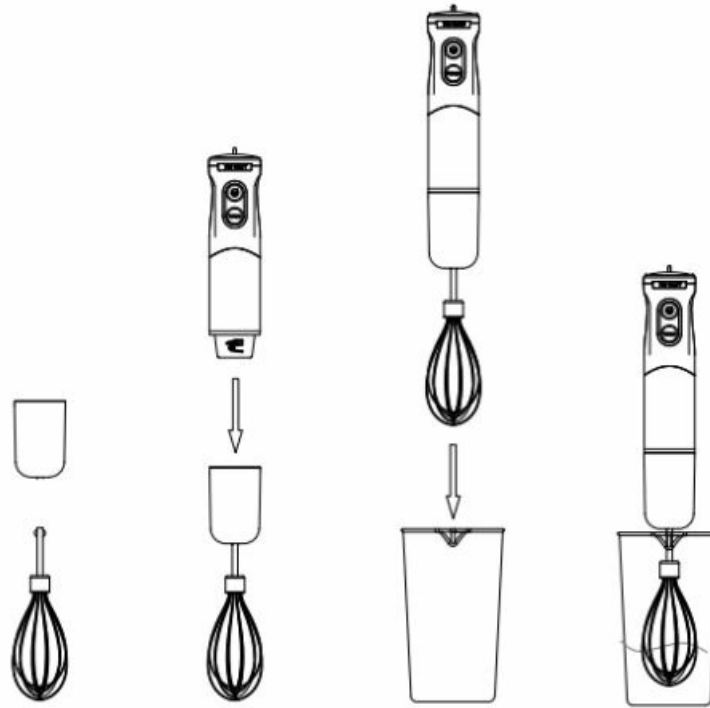
## Operation

**⚠ Danger** The knives are sharp! To avoid injuries, special care must be taken when handling and cleaning.

### Hand blender:

The hand blender is ideal for preparing dips, sauces, soups, mayonnaise, baby food, milkshakes, etc.

1. Place the hand blender (D) onto the motor unit (C). Turn so that the two parts are carefully connected.
2. Put the food into the blender jar (G) and immerse the hand blender (D) completely to avoid splashing. You can use other containers instead of the blender jar. However, make sure that a certain filling level is reached, otherwise the food could splash out.

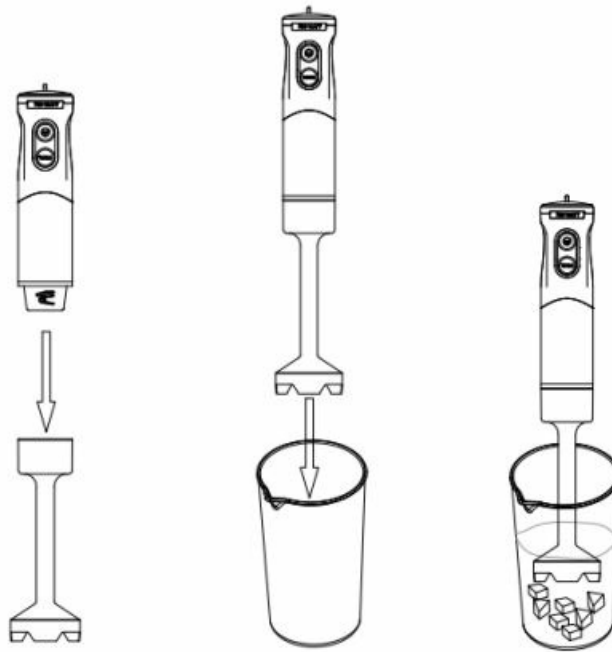


3. Insert the power plug into the socket. Press the power button (A or B) depending on the desired blending power: Power level 1 = lowest power, power level 2 = higher power;
4. Puree the ingredients by moving the blender slowly and carefully left and right, or up and down.
5. As soon as you release the button, the device will switch off. Wait until the blade stops rotating before removing the blender from the blender jar.

#### **Whisk:**

The whisk is ideal for whipping egg whites, whipped cream or ready-made creams.

1. Insert the whisk (F) into the whisk attachment (F).
2. Place the motor unit (C) onto the whisk attachment (E) and turn until both parts are securely locked.
3. Follow points 2 to 4 of the "Hand blender" paragraph .
4. Always start the mixing process at a low power level (button A) and only switch to a higher power level (button B) after about 30 seconds. This will prevent excessive splashing.

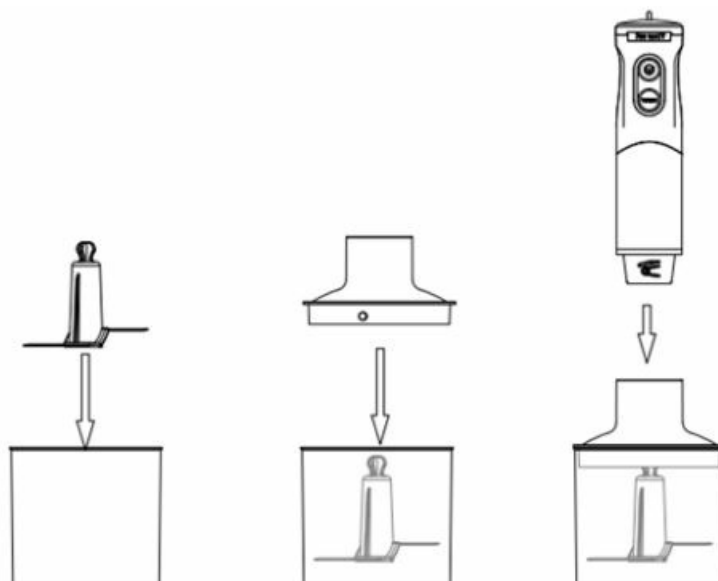


**Please note:**

- When you have finished mixing, unplug the device.
- Mixing cup: The mixing cup (G) can also be used as a measuring cup.

**Multi-chopper:**

The multi-chopper is ideal for chopping nuts, meat, onions, boiled eggs, garlic, etc.



1. Place the multi-chopper blade (I) into the multi-chopper jar (J).
2. Put the food into the multi -chopper jar (J). Make sure that the ingredients are not too big (approx. 1 cm).
3. Place the motor unit (C) onto the multicopper attachment (H) and turn until both parts are securely locked.
4. Insert the power plug into the socket. Press the power button (A or B) depending on the desired power: Power level 1 = lowest power, power level 2 = higher power.
5. As soon as you release the button, the device will switch off. Wait until the blade stops rotating before removing the multi-chopper attachment from the jar.

**cleaning**

To ensure long, trouble-free use of your device, it is necessary to carefully clean the individual parts immediately after each use. Do not wait too long to clean after use so that food residue does not dry out and make cleaning more difficult.

– Unplug the power cord.



**RISK OF ELECTRIC SHOCK!** be immersed or rinsed in water or other liquids



**RISK OF INJURY!** Carefully disassemble the parts. When cleaning, pay particular attention to the cutting surfaces of the blades as they are very sharp.

– Clean the motor unit with a damp (not wet!) cloth. Use pure water or perhaps a few drops of a mild detergent. Make sure that no moisture penetrates the motor unit.

– All other parts can be cleaned in the dishwasher.

– However, we recommend rinsing the parts under running water immediately after use.

– Do not use aggressive, caustic, alcohol- or petrol-based cleaning agents and avoid very hot water.

– Do not use abrasive cleaning utensils to avoid damaging the surfaces.

– Dry all items thoroughly after washing.

– If you do not use the device for a long period of time, pack it thoroughly cleaned and dry in the box and store it in a clean, cool, dry place out of the reach of children.

## Technical data

Power supply: 220 -240V ~ 50/60 Hz

Power: 700 W

Revolutions/min: 16000 (+/- 10%)

Mixing cup: 700 ml

Multi-chopper: 500 ml

Net weight: approx. 1.1 kg

When off, the device has a power consumption of 0.00 watts.

\*Typing errors, design and technical changes reserved!



## Notes on environmental protection



At the end of its working life, this product must not be disposed of with normal household waste. Instead, it must be handed over to a collection point for the recycling of electrical and electronic equipment. This is indicated by the symbol on the product, in the instructions for use or on the packaging.

The materials are recyclable according to their labeling. By reusing, recycling or other forms of recycling old devices, you are making an important contribution to protecting our environment.

Ask your local authority for the responsible disposal facility.

## Warranty / Guarantee

In addition to the statutory warranty, we grant a 24-month warranty on this device, calculated from the date of issue of the invoice or delivery bill. Within this warranty period, all manufacturing and/or material defects will be repaired and/or replaced free of charge, or (at our discretion) exchanged for an item of equal value and in perfect condition, on presentation of the invoice or delivery bill. The prerequisite for such a guarantee is that the appliance has been handled and maintained properly. Claims beyond our warranty services are excluded. In justified cases, the guarantee only covers the repair of the appliance. Further claims and liability for any consequential damage

are excluded. No guarantee can be given for parts that are subject to natural wear and tear or for damage caused by impact, incorrect operation, exposure to moisture or other external influences or by intervention by unauthorized third parties. In the event of a warranty claim, the appliance must be returned to your specialist dealer together with the invoice or delivery bill.

**Silva-Schneider Handelsges.m.b.H.**  
**Karolingerstraße 1 A-5020 Salzburg**  
[office@silva-schneider.at](mailto:office@silva-schneider.at)


### Warranty:

The warranty is expressly stipulated by law and only applies to defects that existed at the time the goods were handed over. The claim is always directed against the contractual partner (dealer), who must remedy the defect free of charge (for the consumer) or arrange for it to be remedied.

### Guarantee:

The guarantee is a voluntary, contractual promise by the manufacturer (general importer) for which there are no minimum requirements in terms of content or form. However, many warranties only cover part of the costs incurred in remedying defects, but they usually apply to all defects that occur within a certain period.

## Documents / Resources

	<a href="#">silva homeline SMS 6502 Hand Blender Set</a> [pdf] Instruction Manual SMS-6502-BDA-int, SMS 6502 Hand Blender Set, SMS 6502, Hand Blender Set, Blender Set, Set
--	--

## References

- 📍 [Hotel Schneider in Obertauern - 4-star-superior - for your ski holiday](#)
- [User Manual](#)

### Manuals+, Privacy Policy

This website is an independent publication and is neither affiliated with nor endorsed by any of the trademark owners. The "Bluetooth®" word mark and logos are registered trademarks owned by Bluetooth SIG, Inc. The "Wi-Fi®" word mark and logos are registered trademarks owned by the Wi-Fi Alliance. Any use of these marks on this website does not imply any affiliation with or endorsement.