



# Silonn SLIM22B Smart Countertop Ice Maker Instruction Manual

[Home](#) » [Silonn](#) » Silonn SLIM22B Smart Countertop Ice Maker Instruction Manual 

## Contents

- [1 Silonn SLIM22B Smart Countertop Ice Maker](#)
- [2 Product Information](#)
- [3 Product Usage Instructions](#)
- [4 IMPORTANT SAFETY INFORMATION](#)
- [5 PRODUCT INTRODUCTION](#)
- [6 CONTROL PANEL INTRODUCTION](#)
- [7 WIFI CONNECTION](#)
- [8 USING YOUR ICE MAKER](#)
- [9 CLEANING AND MAINTENANCE](#)
- [10 PRODUCT SPECIFICATIONS](#)
- [11 TROUBLESHOOTING](#)
- [12 SHORT AND LONG-TERM WARRANTY INFORMATION](#)
  - [12.1 30-DAY TO 1-YEAR WARRANTY LIMITATIONS](#)
- [13 FCC STATEMENT](#)
- [14 Documents / Resources](#)
- [15 Related Posts](#)



**Silonn SLIM22B Smart Countertop Ice Maker**



## Product Information

- This device is designed to comply with FCC RF Exposure requirements.
- It is essential to install and use the device in a way that ensures a minimum separation of 20 cm from the human body at all times.
- Failure to do so may result in non-compliance with FCC regulations.
- Any changes or modifications made to the device that are not expressly approved by the responsible party for compliance can void the user's authority to operate the equipment.
- The manufacturer cannot be held responsible for any radio or TV interference caused by unauthorized modifications to this equipment. Unauthorized modifications may also void the user's authority to operate the equipment.

## Product Usage Instructions

1. Ensure that the device is installed in a manner that provides at least 20 cm separation from the human body at all times.
2. Do not make any changes or modifications to the device without the express approval of the responsible party for compliance.
3. Unauthorized modifications to the equipment may cause radio or TV interference, for which the manufacturer cannot be held responsible.
4. Failure to comply with FCC RF Exposure requirements and unauthorized modifications may void the user's authority to operate the equipment.

## IMPORTANT SAFETY INFORMATION

To reduce the risk of injury or property damage, please follow these safety precautions.

## **WARNING**

- Voltage power from the outlet must match the specifications on the appliance nameplate.
- This appliance must be grounded.
- Using an extension cord may cause overheating and increase the risk of fire.

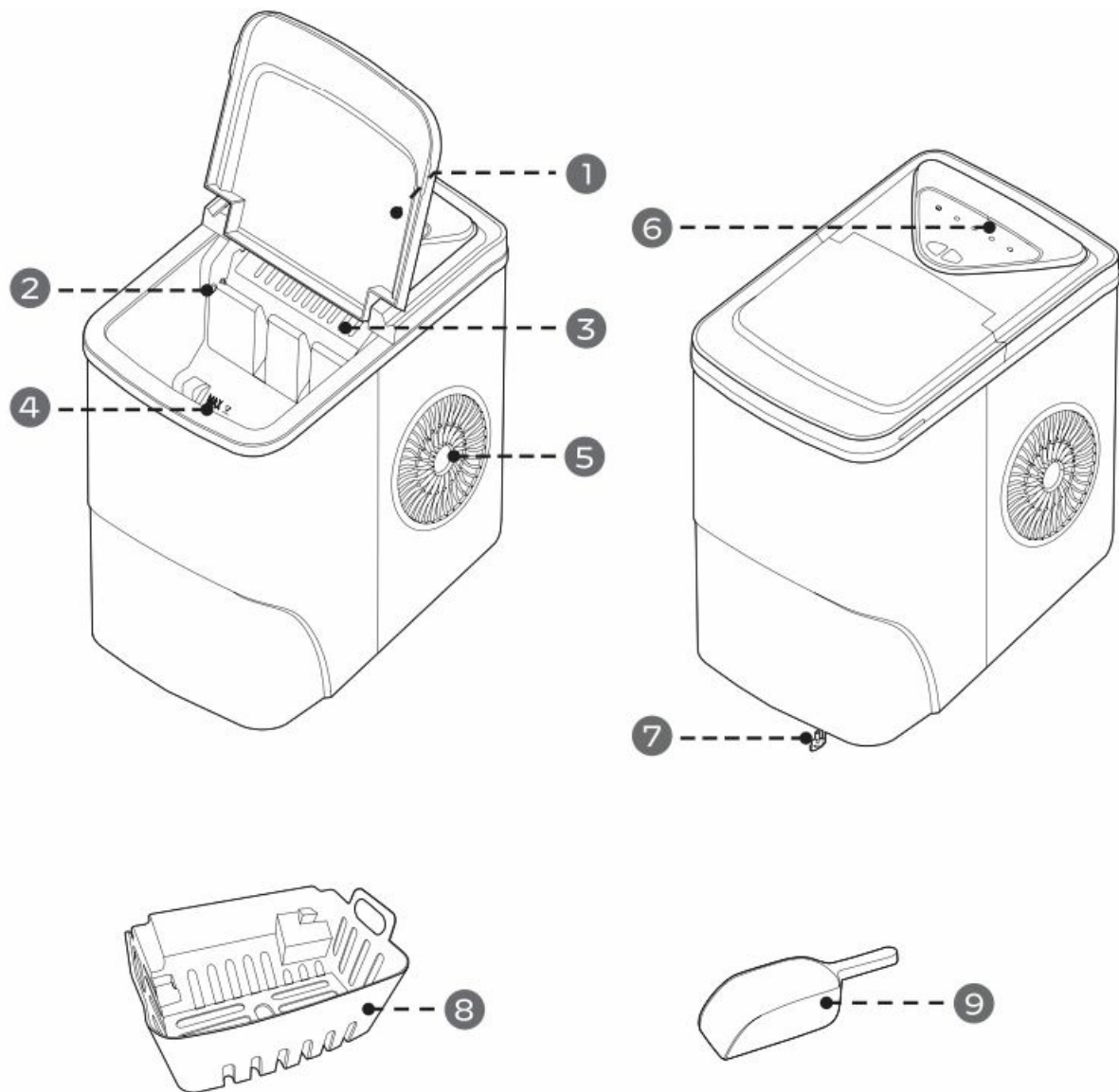
### **If an extension cord MUST be used:**

1. Only use an extension cord with a grounding plug.
  2. The marked rating of an extension cord must be equal to or greater than the rating of this appliance.
- Do not operate if any component, including the cord or plug, is damaged.
  - Unplug the unit before cleaning it by hand.
  - Only responsible and capable adults should operate the ice maker.
  - Do not place the power cord where it could be pulled by children or pose a tripping hazard.
  - Children should not be left unattended near the ice maker during operation.
  - Do not use water that is micro-biologically unsafe or of unknown quality.
  - Do not remove any safety, warning, or product information labels from the unit.
  - Do not touch the evaporator with your hands while the ice maker is operating.
  - Do not plug in or unplug the unit with a wet.
  - The unit must be placed and set up according to installation instructions before use.
  - The unit is for indoor household use only.
  - Do not store or use flammable vapors or liquids near the unit.
  - Do not immerse any part of the unit in water.
  - Do not attempt to disassemble, repair, modify, or replace any part of the ice maker unless permitted by the manufacturer.

## **WARNING**

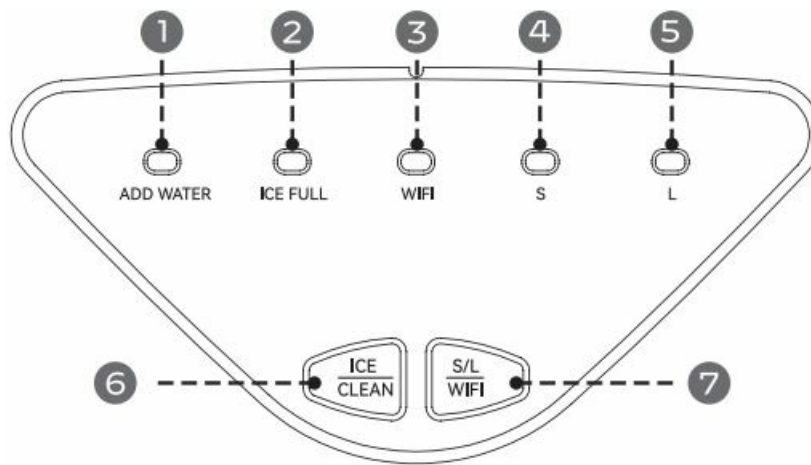
- **FIRE OR EXPLOSION HAZARD** Flammable Refrigerant This unit contains an isobutane refrigerant, also known as R600a, a natural gas with high environmental compatibility.
  - However, it is also combustible. Adhere to the warnings below to reduce the risk of injury or property damage.
1. When handling, installing, and operating the unit, care should be taken to avoid damage to the refrigerant tubing.
  2. Only dispose of the unit according to Federal and Local regulations. Contact your local authorities for the environmentally safe disposal of the unit.
  3. Keep ventilation openings around the unit's enclosure clear of obstruction.
  4. Do not place the unit near heat sources such as an oven.
  5. Ensure a minimum of three inches of clearance around the side and back walls of the unit for proper air circulation.
  6. Do not place the unit in direct sunlight.

## PRODUCT INTRODUCTION



1. Large Viewing Window
2. Ice Full Sensor
3. Ice Shovel
4. Maximum Water Fill Line
5. Air Exhaust Fan
6. Control Panel
7. Drain Plug
8. Ice Basket
9. Ice Scoop

## CONTROL PANEL INTRODUCTION



	Key (with indicator)	Function
1	<b>ADD WATER</b>	The indicator light turns red when the water reservoir needs water.
2	<b>ICE FULL</b>	The indicator light turns red when the ice basket is full.
3	<b>WIFI</b>	An indicator is on when WiFi is connected.
4	<b>s</b>	The indicator light turns green when small ice mode is selected.
	<b>L</b>	The indicator light turns green when large ice mode is selected.
6	<b>ICE CLEAN</b>	<p>Short press the "ICE/CLEAN" button to turn on the ice maker. The "S" or "L" indicator light turns green.</p> <p>Short press the "ICE/CLEAN" button to turn off the ice maker. The "S" or "L" indicator light goes out.</p> <p>When the ice maker is in standby mode, long-press the "ICE/CLEAN" button for 3 seconds and the ice maker will switch to self-cleaning mode. The indicator lights "S" and "L" will flash in green consecutively.</p>
7	<b>S/L WIFI</b>	Confirms large ice mode or small ice mode. Hold 3 seconds for WiFi setup.

## WIFI CONNECTION

1. To download the app, scan the QR code. You can download the iOS or Android version, and then install it on your mobile device.

- If you have issues downloading the app, please call technical support or email customer service.

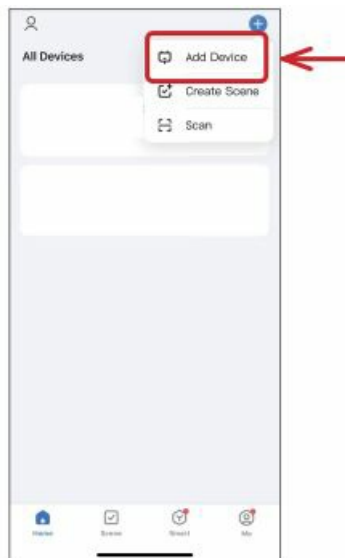


2. Open the app, turn on Bluetooth, then sign up for a free account.

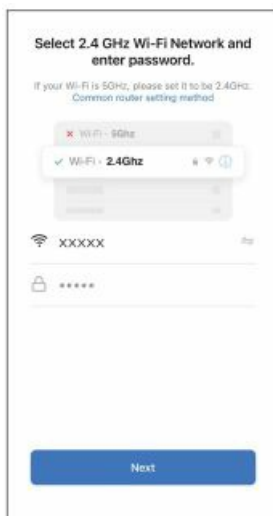
3. Log in with your account name and password.
4. Plug in the ice maker, then hold the “S/L/ WIFI” button for 3 seconds. The WiFi indicator light will flash.



5. Open the app, then select the “add device” button.



6. Select your WiFi network and enter the password. The network must be 2.4 GHz.

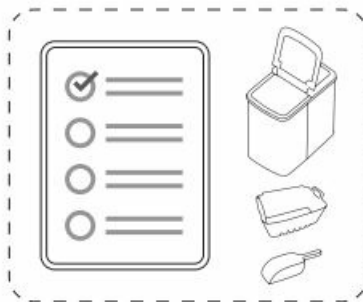
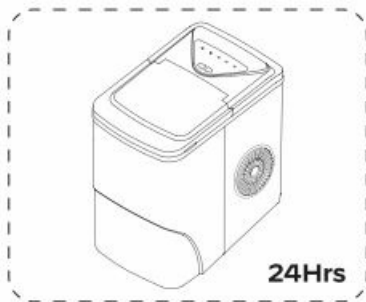


7. Once the ice maker connects, the WiFi indicator light will stay solid.

## USING YOUR ICE MAKER

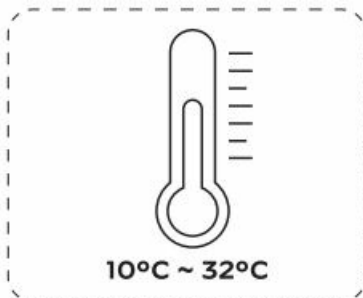
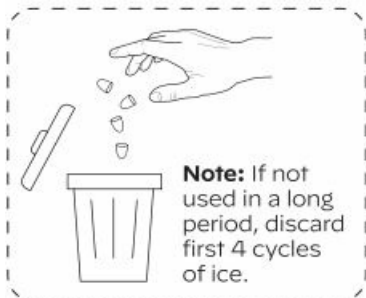
### BEFORE FIRST USE

1. Stand Upright for 24Hrs.
  - Check for Accessories.
  - Missing Parts? Contact Us.



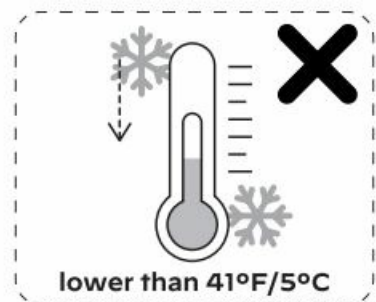
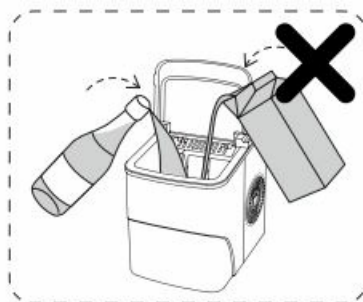
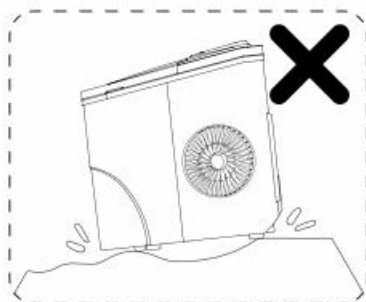
## 2. Discard the first 4 cycles of ice.

- Use in locations 10° c ~ 32° c.
- Perfect Ice Shape.



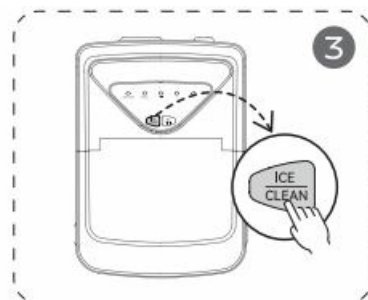
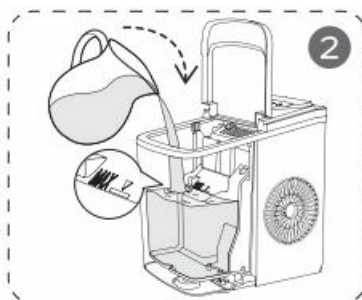
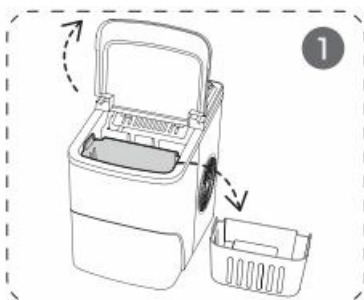
## 3. What Not To Do!

- Unstable base.
- No other liquids (Drinking water only).
- Do not use in high or low temps.



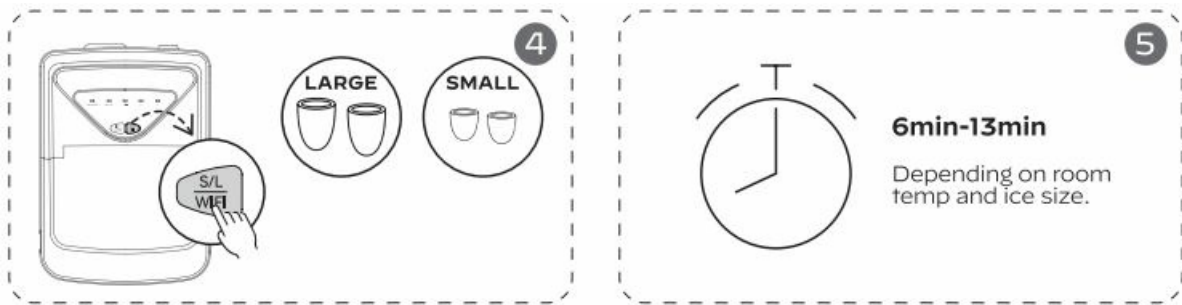
## HOW TO USE YOUR ICE MAKER

- Open the cover and remove the basket.
- Pour water, do not exceed the "MAX" watermark.
- Press the "ICE/CL EAN" button.

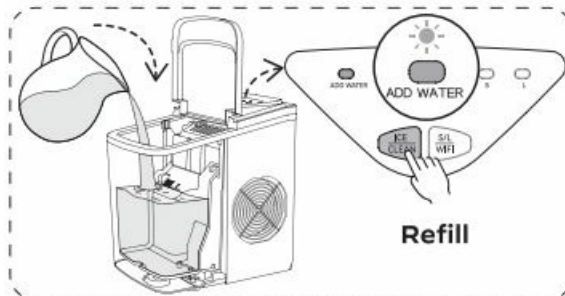
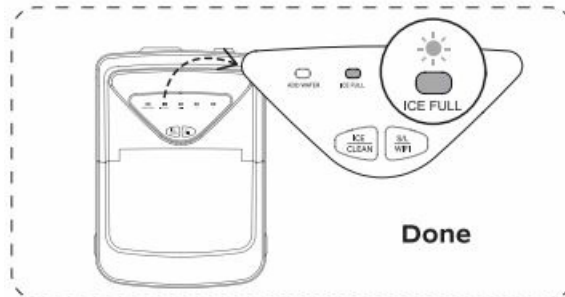


- Press "S/L/WIFI" to choose the ice cube size.
- Wait 6min-73min.





- Ice full and ready when the “ICE FULL” indicator is on.

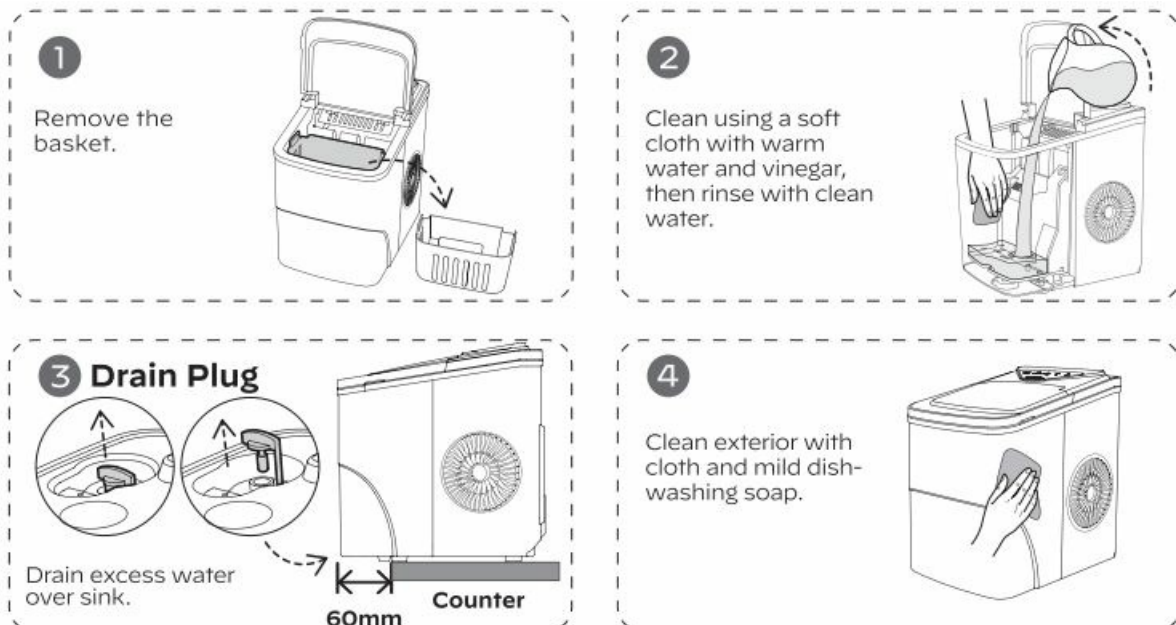


- When the “ADD WATER” indicator is red, add water and press “ICE/ CLEAN”.

## CLEANING AND MAINTENANCE

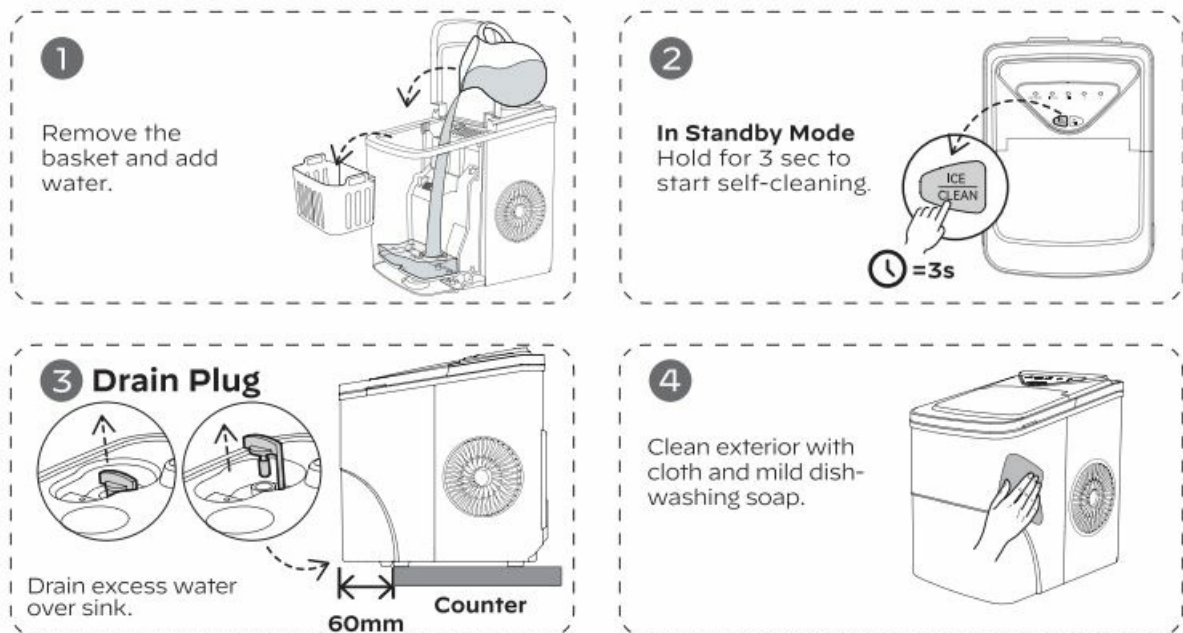
To keep your ice tasting fresh and the unit looking great, we recommend cleaning the unit once per week.

### MANUAL CLEANING



### SELF-CLEANING (30-MIN PROCESS)





- DO's & DON'Ts while cleaning and maintaining
- Do not use organic solvent, boiled water, detergent, strong acid strong alkali, etc. for cleaning.
- When the unit is not to be used for a long duration, drain the water completely & dry the interior.
- Store in a well-ventilated area.

## PRODUCT SPECIFICATIONS

<b>Model</b>	SLIM22B
<b>Voltage/Frequency</b>	115V/60Hz
<b>Ice-Making Current</b>	1.7A
<b>Ice-Harvesting Current</b>	2.0A
<b>Working Power</b>	160W
<b>Water Reservoir</b>	2L (0.53gal)
<b>Ice-Making Rate</b>	26 lbs per day
<b>Ice Basket Capacity</b>	1.32 lbs (0.6KG)
<b>Ice Shape</b>	Bullet
<b>Ice Size</b>	Small or Large
<b>Material</b>	ABS, PP

## TROUBLESHOOTING

Problem	Possible Causes	Solution
<b>Poor ice shape or quality.</b>	Poor heat dissipation.	Leave a 6-inch clearance on all sides of the ice maker for ventilation.
	The water temperature is too high.	Fill with water temperature between 8°C and 25°C.
	The ambient temperature is too high.	Use the ice maker at room temperatures between 10°C and 32°C.
	Evaporator deformation	Please contact customer service.
<b>Ice maker creating a loud noise.</b>	The ice maker has not been cleaned for a long time, which will form a sticky substance around the inlet of the water pump .	Clean every 1 to 2 weeks, using some neutral cleaning agents (such as mild vinegar solution and soapy water, etc.)
	Lack of water to pump will create noise when pumping water.	Add more water.
	The fan or ice maker is damaged.	Please contact customer service.
	The water pump is damaged.	

Problem	Possible Causes	Solution
<b>ICE FULL light is on</b>	Ice is blocking the infrared sensor	Empty the ice basket.
	Infrared sensors do not work.	Wipe clean the infrared sensors, or long-press the “S/ L/WIFI” button for 5 seconds to force the ice maker to cycle around 10 times.  Contact customer service if the infrared sensors still don't work.
<b>Ice sticks together.</b>	Making ice takes too long.	Stop making ice, after the ice melts restart and try again.
	The water temperature is too low	Fill with water temperatures between 8°C and 25°C.
	Evaporator deformation.	Please contact customer service.
<b>Not making ice.</b>	The ambient or water temperature is too high.	Keep ambient temperature less than 32°C and fill with cold water.
	The water pump is damaged.	Please contact customer service.
	Refrigerating system leaking.	
	Refrigerating system is blocked.	
	The fan stopped working.	
	The wires are loose.	
	The gears in the motor are broken.	

Problem	Possible Causes	Solution
<b>ADD WATER light is on.</b>	Low water level or not enough water.	Stop making ice, refill water, press “ICE/CLEAN”, then restart and try again.
	The water screen is blocked at the bottom of the water reservoir.	Run the self-cleaning cycle.
	Pump malfunction.	Please contact customer service.
	Water detector malfunction.	

## SHORT AND LONG-TERM WARRANTY INFORMATION

### 30-DAY LIMITED WARRANTY

- To provide customers with a quality shopping and user experience, the unit can be replaced or returned for a full refund within the 30-day period from the date of purchase.

### 30-DAY TO 1-YEAR LIMITED WARRANTY

- After the 30-day warranty has expired, a 1-year warranty from the date of purchase that covers product replacement is automatically activated. Please note that proof of purchase is required for all warranty claims.

### 30-DAY TO 1-YEAR WARRANTY LIMITATIONS

#### This warranty does not cover:

- Any condition resulting from incorrect or inadequate maintenance or care.
- Damage resulting from misuse, abuse, negligence, accidents, or shipping damage.
- Dissatisfaction due to buyer's remorse.
- Normal wear and tear.
- Damages incurred after initial transportation.

## FCC STATEMENT

### Including FCC ID: 2ANDL-WBR3

This device complies with Part 15 of the FCC Rules. Operation is subject to the following two conditions:

1. this device may not cause harmful interference, and
2. this device must accept any interference received, including interference that may cause undesired operation.

**NOTE:** This equipment has been tested and found to comply with the limits for a Class B digital device, pursuant to part 15 of the FCC Rules. These limits are designed to provide reasonable protection against harmful interference in a residential installation. This equipment generates uses and can radiate radio frequency energy and, if not installed and used in accordance with the instructions, may cause harmful interference to radio communications. However, there is no guarantee that interference will not occur in a particular installation. If this equipment does cause harmful interference to radio or television reception, which can be determined by turning the equipment off and on, the user is encouraged to try to correct the interference by one or more of the following measures:

- Reorient or relocate the receiving antenna.
- Increase the separation between the equipment and the receiver.
- Connect the equipment to an outlet on a circuit different from that to which the receiver is connected.
- Consult the dealer or an experienced radio/TV technician for help.

In order to comply with FCC RF Exposure requirements, this device must be installed to provide at least 20 cm separation from the human body at all times.

Changes or modifications not expressly approved by the party responsible for compliance could void the user's authority to operate the equipment

**NOTE:**

THE MANUFACTURER IS NOT RESPONSIBLE FOR ANY RADIO OR TV INTERFERENCE CAUSED BY UNAUTHORIZED MODIFICATIONS TO THIS EQUIPMENT.

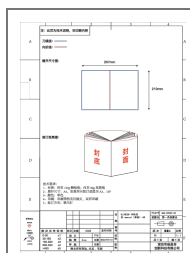
SUCH MODIFICATIONS COULD VOID THE USER'S AUTHORITY TO OPERATE THE EQUIPMENT.

### Thank You For Choosing Us!

- All of us do appreciate your ice maker purchase. We hope that you are as happy with the ice maker as we were designing and manufacturing it for you.
- We strive to provide you with the best quality ice makers and services in the industry.
- **Questions or Problems?**
- **877-201-4016**
- [help\\_service\\_center@outlook.com](mailto:help_service_center@outlook.com)

---

### Documents / Resources



[Silonn SLIM22B Smart Countertop Ice Maker](#) [pdf] Instruction Manual  
2BCSN-WBR3-0001, 2BCSNWBR30001, SLIM22B, SLIM22B Smart Countertop Ice Maker, S  
mart Countertop Ice Maker, Countertop Ice Maker, Ice Maker