



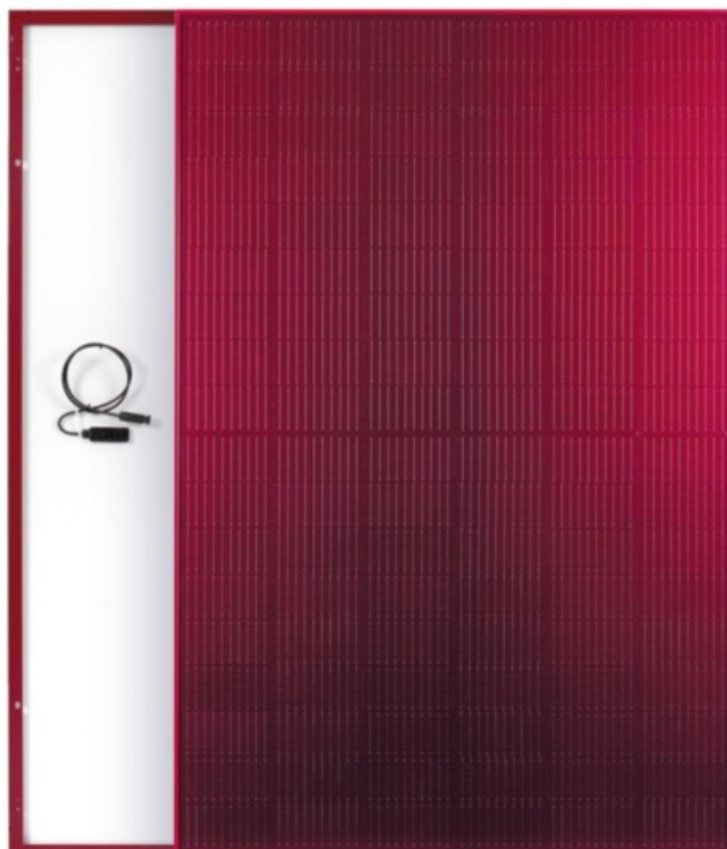
[Home](#) » [Silk](#) » **Silk Nova Red High Performance PV Modules User Manual** 

Contents [[hide](#)]

- 1 [Silk Nova Red High-Performance PV Modules](#)
- 2 [KEY BENEFITS AND FEATURES](#)
- 3 [CONTACT](#)
- 4 [Documents / Resources](#)
 - 4.1 [References](#)



Silk Nova Red High-Performance PV Modules



370 W

Maximum power

n-type

Technology inside

KEY BENEFITS AND FEATURES



Power 370 Watt



108 M10 **n-type** half-cut cells



Red colored glass and frame for special architectural requirements (similar to RAL 3005)*



Coloured glass for a **consistent appearance over time**



Perfect for traditional **roofs with red tiles** and historical areas



1722 x 1134 x 30 mm

Performance guarantee

- 25-years performance warranty with max power decrease from 2nd year 0.4%/year
- 99% at the end of first year
- 91.4% at the end of 20th year
- 89.4% at the end of 25th year

Product guarantees

- 15-year product warranty
- Third-party product liability insurance
- All FuturaSun's modules are designed and guaranteed by the Italian headquarters

*All images shown are for illustration purposes only, product appearance and colour reference (RAL) may vary according to the installation, light and ambient reflection.

Mechanical Specifications

Dimensions	1722 x 1134 x 30 mm
Weight	20.8 kg
Glass	Red, High transmission, Low iron, Tempered, ARC, Thickness 3.2 mm
Cells	108 monocrystalline half-cut n-type cells 182 x 91 mm
Frame	Varnished anodized aluminium frame with mounting and drainage holes
Junction boxes	Certified according to IEC 62790, IP 68 approved, 3 bypass diodes
Cables	Solar cable 4mm ² , length 1100 mm or customized with connectors type Zhejiang Jiaming JM608
Backsheet	Composite Multilayer film – white on the back
Maximum reverse current (I _r)	25 A
Maximum system voltage	1500 V
Mechanical load (snow)	Design load: +1600 Pa, (+2400 Pa including safety factor 1.5)
Mechanical load (wind)	Design load: -1600 Pa, (-2400 Pa including safety factor 1.5)

Electrical data – STC*		FU370MV Silk Nova Red
Sorting tolerance	W	0~+5

Module power (P _{max})	W	370
Open circuit voltage (V _{oc})	V	38.94
Short circuit current (I _{sc})	A	11.97
Maximum power voltage (V _{mpp})	V	31.57
Maximum power current (I _{mpp})	A	11.72
Module efficiency	%	18.97

Electrical data – NOCT**		FU370MV Silk Nova Red
Module power (P _{max})	W	278
Open circuit voltage (V _{oc})	V	36.67
Short circuit current (I _{sc})	A	9.65
Maximum power voltage (V _{mpp})	V	30.17
Maximum power current (I _{mpp})	A	9.22

Temperature ratings

Temperature coefficient Isc	%/°C	0.045
Temperature coefficient Voc	%/°C	-0.25
Temperature coefficient Pmax	%/°C	-0.29
NOCT**	°C	45
Operating temperature	°C	from -40 to +85
Module (T98) max	°C	70

Certifications	
Factory	ISO 9001 – 14001 – 45001
Product	IEC 61215, IEC 61730, Fire rating Class C

Packaging	
Quantity / Pallet	36 pcs
Container 40' HC	936 pcs / 26 pallets

The information included in this module datasheet is subject to change without notice and is provided for informational purposes only. No contractual rights are established or should be inferred because of user's reliance on the information contained in this module datasheet. Please refer to the appropriate module user guide and module product specification document for more detailed technical information regarding module performance, installation and use.

- Standard Test Conditions STC: 1000 W/m² – AM 1.5 – 25 °C – tolerance: Pmax (±3%). Voc (±4%). Isc (±5%)
- Nominal Operating Cell Temperature NOCT: 800 W/m² – T=45 °C – AM 1.5

Product Made in P.R.C.

AUS_01

CONTACT


Riva del Pasubio 14, 35013 Cittadella, PD, Italy

+39 049 5979802 | info@futurasun.it | futurasun.com



For detailed information, please refer to the installation manual

Documents / Resources

	<p>Silk Nova Red High Performance PV Modules [pdf] User Manual</p> <p>2506, 108, 370W, Nova Red High Performance PV Modules, Nova Red, High Performance PV Modules, Performance PV Modules, PV Modules, Modules</p>
--	---

References

- [User Manual](#)



Silk



108, 2506, 370W, High Performance PV Modules, Modules, Nova Red, Nova Red High Performance PV Modules, Performance PV Modules, PV Modules, Silk



Leave a comment

Your email address will not be published. Required fields are marked *

Comment *

Name

Email

Website

☐ Save my name, email, and website in this browser for the next time I comment.

Post Comment

Search:

e.g. whirlpool wrf535swhz

Search

[Manuals+](#) | [Upload](#) | [Deep Search](#) | [Privacy Policy](#) | [@manuals.plus](#) | [YouTube](#)

This website is an independent publication and is neither affiliated with nor endorsed by any of the trademark owners. The "Bluetooth®" word mark and logos are registered trademarks owned by Bluetooth SIG, Inc. The "Wi-Fi®" word mark and logos are registered trademarks owned by the Wi-Fi Alliance. Any use of these marks on this website does not imply any affiliation with or endorsement.