

Silk n Curl with Ease



Silk n Curl with Ease Instructions

[Home](#) » [Silk n](#) » Silk n Curl with Ease Instructions 

Contents

- [1 Silk n Curl with Ease](#)
- [2 Specifications](#)
- [3 Product Usage Instructions](#)
- [4 FAQs \(Frequently Asked Questions\)](#)
- [5 Documents / Resources](#)
 - [5.1 References](#)
- [6 Related Posts](#)



Silk n Curl with Ease



Specifications

- Product Name: Curling Device
- Power: Electric
- Barrel Options: Left and Right
- Temperature Settings: Adjustable
- Recommended Hair Dryness: At least 90%
- Hair Section Size: 2-3 cm (0.78-1.18 inch)

Product Usage Instructions

1. Step 1: Prepare Your Hair
Ensure your hair is dry at least 90% before starting the curling process. Choose the appropriate barrel based on your desired curl direction.
2. Step 2: Turn on the Device
Switch on the device and select the highest air speed and temperature suitable for your hair type. Take a hair section of 2-3 cm (0.78-1.18 inch) and hold it at the middle/top, letting the ends hang freely.
3. Step 3: Curling Process
Position the barrel at the middle/top part of the hair section, allowing all ends to wrap around the barrel automatically. The direction in which you bring the barrel depends on the selected side.
4. Step 4: Curling Technique
Slowly move the barrel towards your head without twisting it, letting the rest of the hair section wrap around it. Heat the hair for a few extra seconds until the desired curl forms.
5. Step 5: Setting the Curl
For optimal results, press and hold the temperature button to set the curl with cool air for approximately 10 seconds.
6. Step 6: Revealing the Curl

Pull the device straight down to release the hair section and reveal the curl. Repeat the process if needed until your hair is dry.

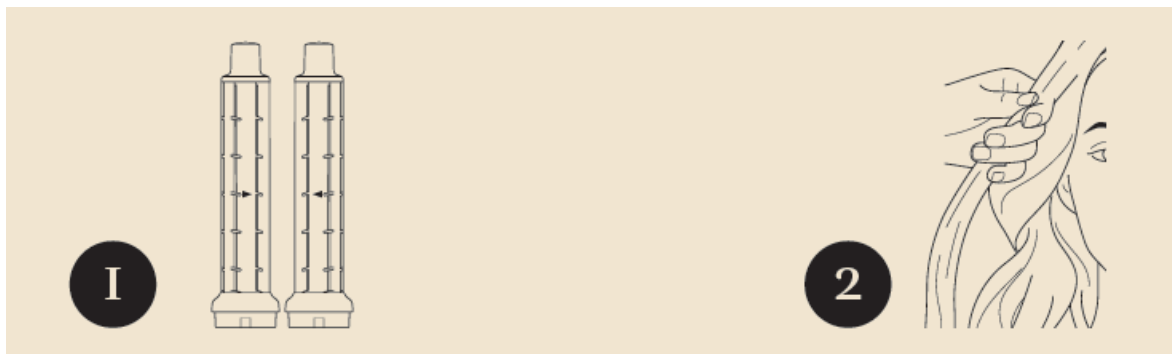
FAQs (Frequently Asked Questions)

Q: How do I select the appropriate barrel direction?

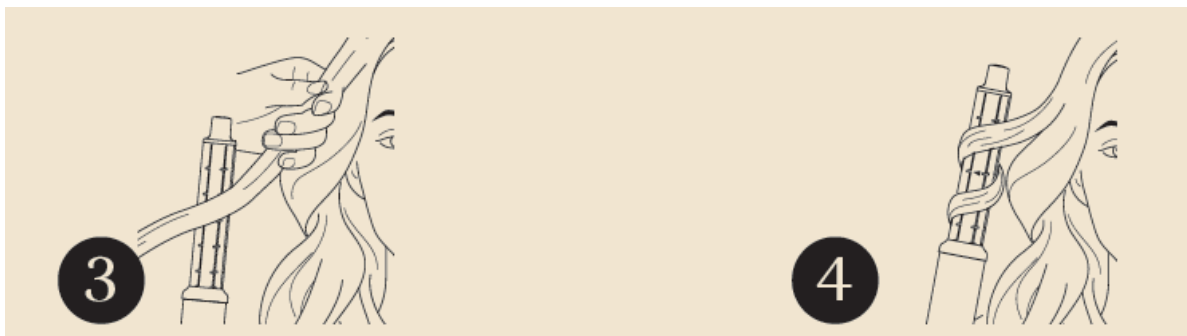
A: Choose the left or right barrel based on your desired curl direction.

Curl with ease!

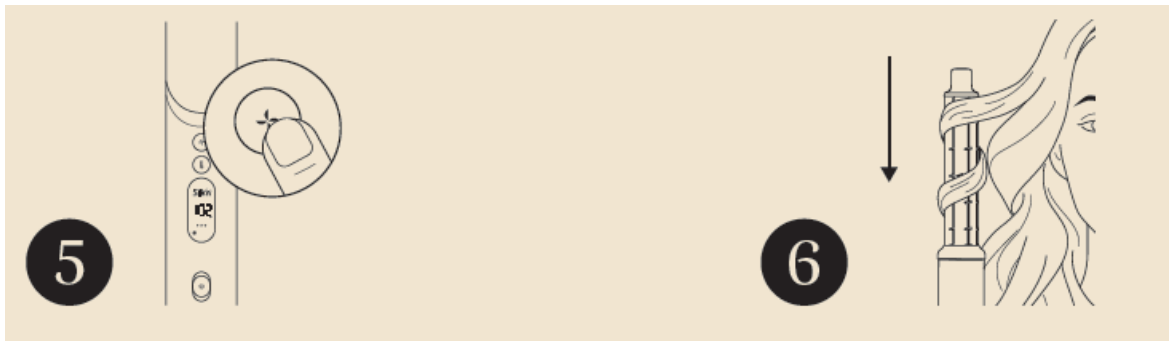
1. Make sure your hair is dry for at least 90%. Select the left or right barrel, depending on your de-sired curl direction.
2. Turn on the device and use the highest air speed and temperature suitable for your hair. Take a hair section of 2-3 cm (0.78-1.18 inch) and hold it at the middle/top. Let the ends of the hair section hang freely.



3. Bring the barrel to the middle/top part of the hair section and let all the ends of the hair section wrap around the barrel automatically. Whether to bring the barrel to the front or back of the hair section depends on the barrel used.
4. Gradually move the barrel towards your head without twisting and turning it. Allow the rest of the hair section to continue to wrap itself around the barrel. Continue to heat it for an extra few seconds until the desired curl is revealed.




5. For the best results, press and hold the temperature button and let the cool air set the curl for about 10 seconds.
6. Then, pull the device straight down to release the hair section and reveal the curl. Repeat the process if necessary, until the hair is dry.





www.silkn.com | www.silkn.ca

Documents / Resources

	<p>Silk n Curl with Ease [pdf] Instructions Curl with, Ease, Curl</p>
---	---

References

-  [Beauty Tools for Home Use | Silk'n](#)
-  [Beauty Tools for Home Use | Silk'n](#)
- [User Manual](#)

[Manuals+](#), [Privacy Policy](#)

This website is an independent publication and is neither affiliated with nor endorsed by any of the trademark owners. The "Bluetooth®" word mark and logos are registered trademarks owned by Bluetooth SIG, Inc. The "Wi-Fi®" word mark and logos are registered trademarks owned by the Wi-Fi Alliance. Any use of these marks on this website does not imply any affiliation with or endorsement.