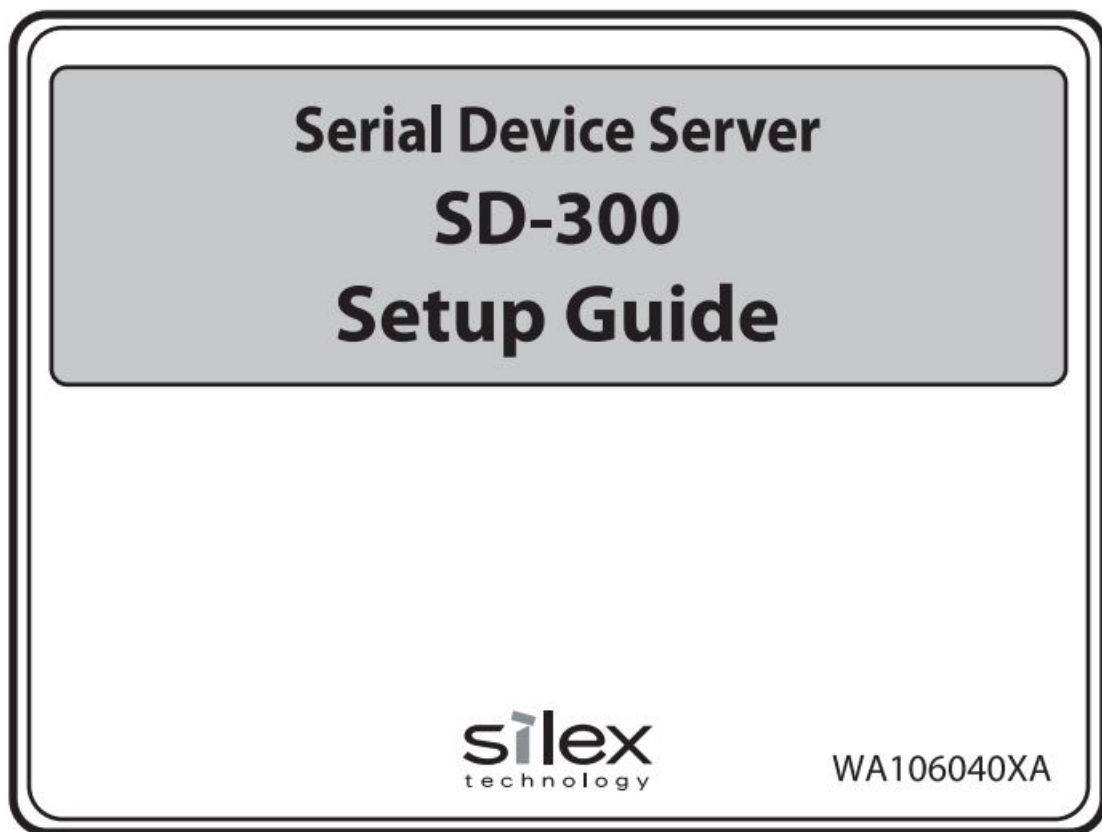




## silex SD-300 Serial Device Server User Guide

[Home](#) » [silex](#) » silex SD-300 Serial Device Server User Guide 

*silex SD-300 Serial Device Server User Guide*



Thank you for purchasing the Serial Device Server, SD-300.  
This Setup Guide provides information on how to set up and use SD-300

### Package Contents

The following items are included in SD-300 package.

- SD-300
- AC adaptor

- Setup Guide (this document)
- GPL license notice
- Warranty Booklet
- Rubber foot (4pcs)

## Setup Procedure

The following is the procedure to setup SD-300.

### Contents

#### 1 1 Before You Begin

##### 1.1 1-1. Necessary Items

##### 1.2 1-2. Downloading the necessary items

#### 2 2 Setup

##### 2.1 2-1. Before Setup

##### 2.2 2-2. Configure Network Settings

#### 3 3 Link to Serial Device

##### 3.1 3-1. Start SX Virtual Link for Serial Device Server

##### 3.2 3-2. Link to a serial device

##### 3.3 3-3. Start a serial communication software

##### 3.4 3-4. Unlink from a serial device

#### 4 Documents / Resources

#### 5 Related Posts

## 1 Before You Begin

### Network Cable

Connect SD-300 to a wired LAN.

\* In a 100BASE-TX network, a network cable supporting 1 DCD Data Carrier Direct Input 100BASE-TX category 5 or above is required.

### 1-1. Necessary Items

The following items are required in order to use SD-300.

### Serial Cable

Connect SD-300 and your serial device.

The serial port PIN assignment is shown on the right.

Use the serial cable that came with your serial device (the one you may have been using to connect the PC and serial device directly) or that is recommended in the operating manual of your serial device.

## ■ PIN Assignment

Pin	Details
1	DCD(Data Carrier Direct) Input
2	RxD(Receive Data) Input
3	TxD(Transmit Data) Output
4	DTR(Data Terminal Ready) Output
5	GND(Ground) Input
6	DSR(Data Set Ready) Input
7	RTS(Request To Send) Output
8	CTS(Clear To Send) Input
9	RI(Ring Indicate) Input or +5 VDC Power Input

## 1-2. Downloading the necessary items

This section explains how to download the necessary utilities and user's manual from our website.

1. Access the URL below from the computer you are using to configure the SD-300.

URL: <https://www.silextechnology.com/>

2. Go to the Support page and select the product model.

Product Model SD-300

3. Downloading the necessary items EJ Download the utilities and user's manual below and extract them on your computer.

User's Manual	SD-300 User's Manual
---------------	----------------------

### ■ The below is used on the computer where you configure SD-300.

Utility	Serial Device Server Setup
---------	----------------------------

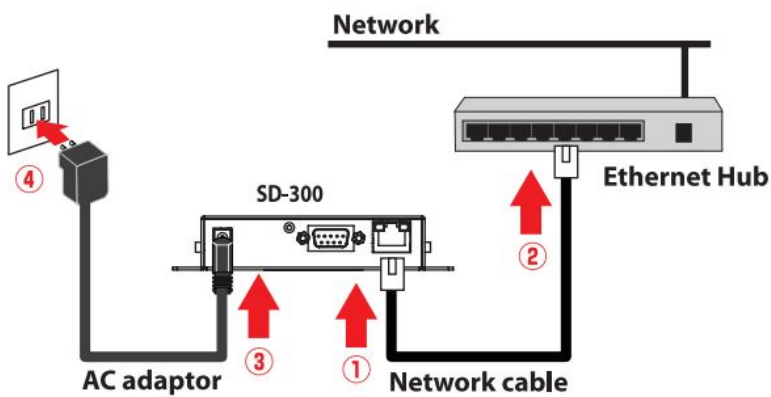
### ■ The below is used on the computer where you use SD-300.

Utility	SX Virtual Link for Serial Device Server
Installation Guide	SX Virtual Link for Serial Device Server Installation

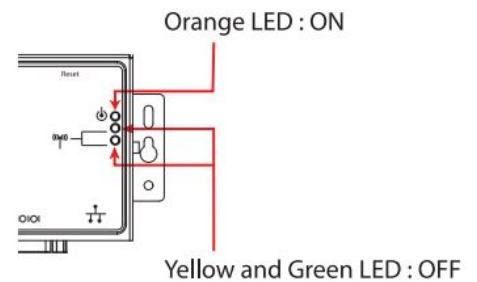
## 2 Setup

### 2-1.Before Setup

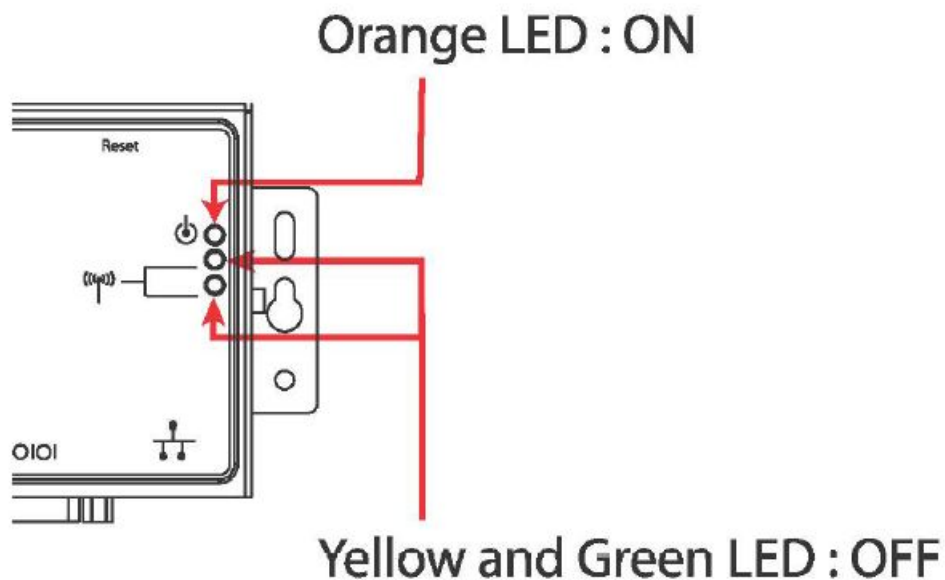
- Connect a network cable to SD-300 and the other end to an Ethernet Hub.  
Connect an AC adaptor to SD-300 and power plug to an outlet.



- 2** Check the LEDs on SD-300.  
 - Orange LED turns ON  
 - Green/Yellow LEDs turn OFF



- Check the LEDs on SD-300.
  - Orange LED turns ON
  - Green/Yellow LEDs turn OFF

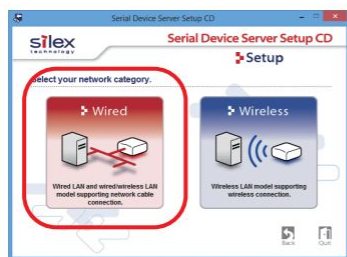


## 2-2. Configure Network Settings

- 1** Open the folder "**Serial Device Server Setup**" you have downloaded and double-click **Sdsetup.exe**.
- 2** Click **Device Server Setup**.

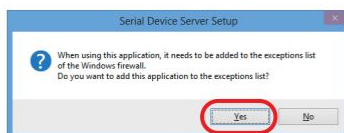


**3** Click **Wired**.



\* If the User Account Control screen is displayed, click **Yes** or **Continue**.

**4** Click **Yes**.



**5** The Serial Device Server Setup screen is displayed. Click **Next**.



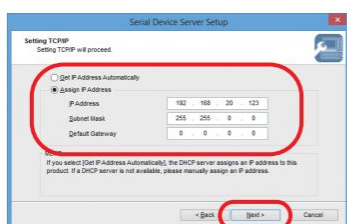
**6** Read the **SOFTWARE LICENSE AGREEMENT** and click **Yes**.



**7** Select **SD-300** and click **Next**.

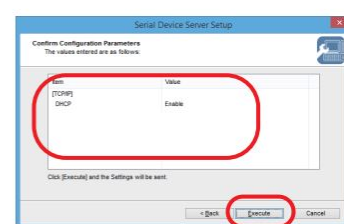


**8** Select **Assign IP Address** and enter the designated IP address and click **Next**.



\* When there is a DHCP server on your network and you wish to obtain an IP address automatically from it, select **Get IP Address Automatically** and click **Next**.  
\* When the window without the option, "Get IP Address Automatically" is displayed, please enter the IP address (mandatory), subnet mask and default gateway.

**9** Check the settings and click **Execute**.



**10** Select **Yes** and click **Finish**.



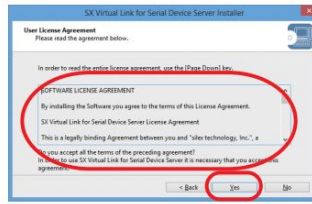
\* If you do not want to install SX Virtual Link for Serial Device Server, select **No** and go on to **20**.

The following explains how to install SX Virtual Link for Serial Device Server. Follow the instructions on the screen to install it.

- 11** SX Virtual Link for Serial Device Server Installer wizard is displayed. Click **Next**.



- 12** Read the **SOFTWARE LICENSE AGREEMENT** and click **Yes**.



- 13** Select the folder to install into and click **Next**.



- 14** Enter the Group Name to be displayed in the Start Menu. Click **Next**.



- 15** Click **Start** to begin the installation.



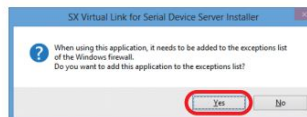
- 16** Windows Security message is displayed. Click **Install**.



- 17** Click **Install**.



- 18** When the message below is displayed, click **Yes**.

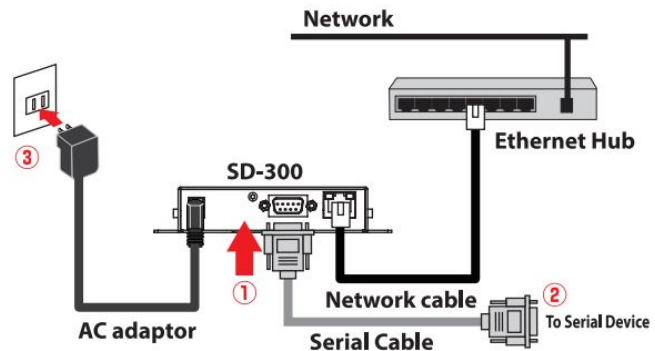


- 19** The completion screen is displayed. Click **Finish**.



- 20** Unplug the AC adaptor from the outlet for these settings to take effect.

- 21** Connect the serial device that you wish to share over the network to SD-300 using a serial cable and insert the power plug of SD-300 into the outlet.



### 3 Link to Serial Device

In this Setup Guide, how to link the serial device using SX Virtual Link for Serial Device is described (this method is called as “Serial Port Emulation Mode”).

For other communication methods, see the SD-300 User’s Manual that you have downloaded at Step1 Before You Begin.

#### Install the necessary application to a PC

Install the SX Virtual Link for Serial Device if it is not yet installed to the PC where you use SD-300.

For how to download it, see Step1 Before You Begin.

For how to install it, see SX Virtual Link for Serial Device Server Installation guide that you have downloaded.

#### 3-1. Start SX Virtual Link for Serial Device Server

Click the icon O in the task tray or click Start – All Programs – SX Virtual Link for Serial Device Server – SX Virtual

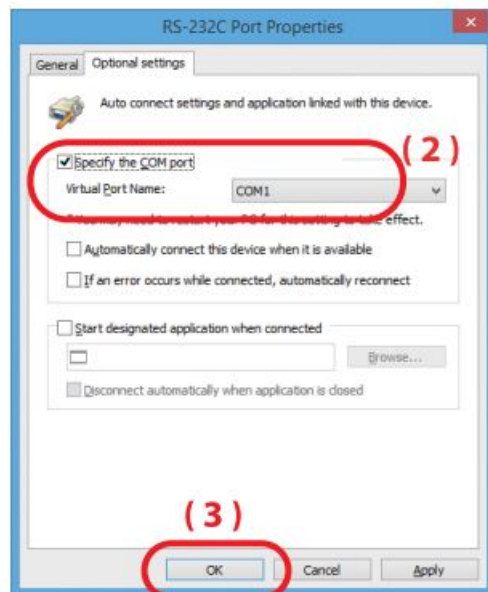


Link for Serial Device Server.

### 3-2. Link to a serial device

\* To specify the COM port manually, please complete the following steps before you link to the serial device.

1. Select the serial device that you wish to link and click the Properties button [m] .
2. In the Optional settings tab, check Specify the COM port check box and select the COM port that you wish to use from Virtual Port Name. (Please do not select one that is already used on your system.)



(3) Click **OK**.

1. Select SD-300 in SX Virtual Link for Serial Device Server's main window and click Connect button.



2. Once you successfully link to the serial device, the status icon is changed to "Connected" in the SX Virtual Link for Serial Device Server's main window.

The COM port that you have selected is displayed in the status column.

### 3-3. Start a serial communication software

1. Start a serial communication software such as a terminal software, etc.
2. On the serial communication software, select the COM port that is displayed in the status column of the SX

Virtual Link for Serial Device Server's main window.

\* Also, configure the serial port settings such as a baud rate, stop bit, etc. on serial communication software.

Once the communication settings are complete, you can communicate with the serial device connected to SD-300.

### 3-4. Unlink from a serial device

1. Close the serial communication software.
2. Select SD-300 in the SX Virtual Link for Serial Device Server's main window and click Disconnect button.


### Customer Support

**USA: silex technology America, Inc.**

E-mail: [support@silexamerica.com](mailto:support@silexamerica.com)

URL: <https://www.silextechnology.com/>

### Documents / Resources

	<p><b><a href="#">silex SD-300 Serial Device Server</a></b> [pdf] User Guide SD-300 Serial Device Server, SD-300, Serial Device Server, SD-300 Device Server, Device Server, Serial Server, Server, SD-300 Server</p>
-----------------------------------------------------------------------------------	---------------------------------------------------------------------------------------------------------------------------------------------------------------------------------------------------------------------------