



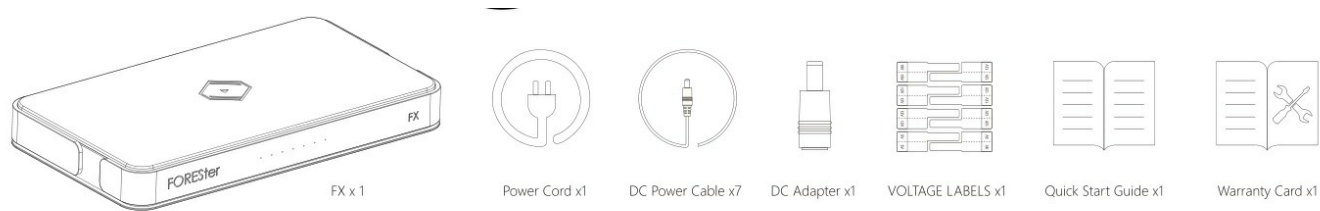
SILENT ANGEL FX Ultra Low Noise Multi Channel Output Power Supply User Guide

[Home](#) » [SILENT ANGEL](#) » SILENT ANGEL FX Ultra Low Noise Multi Channel Output Power Supply User Guide 

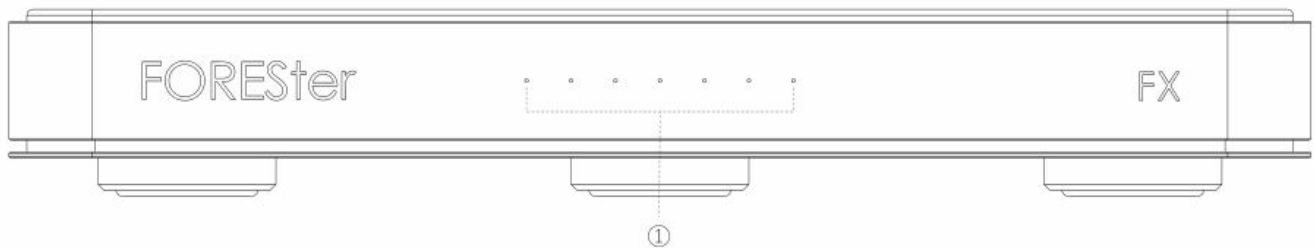
SILENT ANGEL FX Ultra Low Noise Multi Channel
Output Power Supply User Guide



Package Contents



Front Panel



(1) Power Output Port Status Light (each light corresponds to each port on the back)

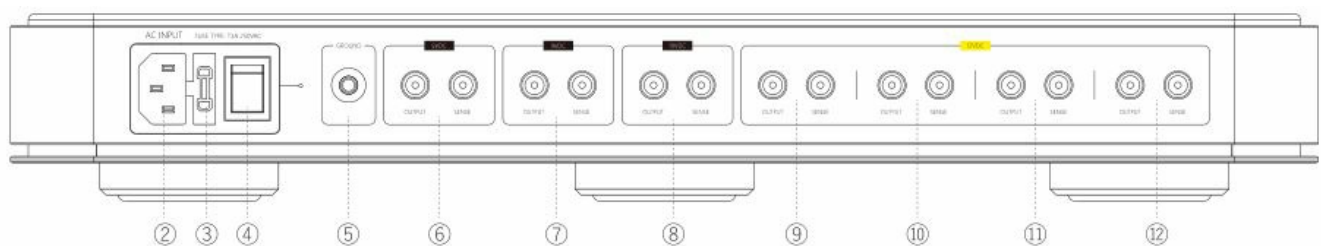
When the power is connected and the power switch is turned on, the blue light will light up.

When the port is not connected to a device and is in standby mode, the corresponding light will turn blue.

When the port is connected to the device and outputs power normally, the corresponding light will turn green.

If there is no power input or the power output switch is turned off, the light will not light up.

Rear Panel



② AC Power Input

AC power outlet input

③ Fuse Holder

A fuse is inside the fuse holder

④ Power Switch

Power switch that controls power input

⑤ Grounding Port

Connect to grounding box

⑥ 5VDC Power Output

5VDC power output port/Sense terminal

⑦ 9VDC Power Output

9VDC power output port/Sense terminal

⑧ 19VDC Power Output

19VDC power output port/Sense terminal

⑨~⑫ 12VDC Power Output

12VDC power output port/Sense terminal

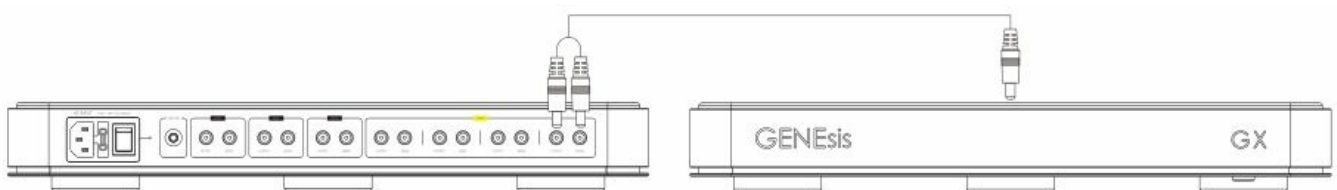
DC Power Cord Connection Method

To use a DC power cord, please first connect the DC power cord to the SENSE end of the FX device, and then connect the OUTPUT end_ Then connect the other end to the device you need to power_

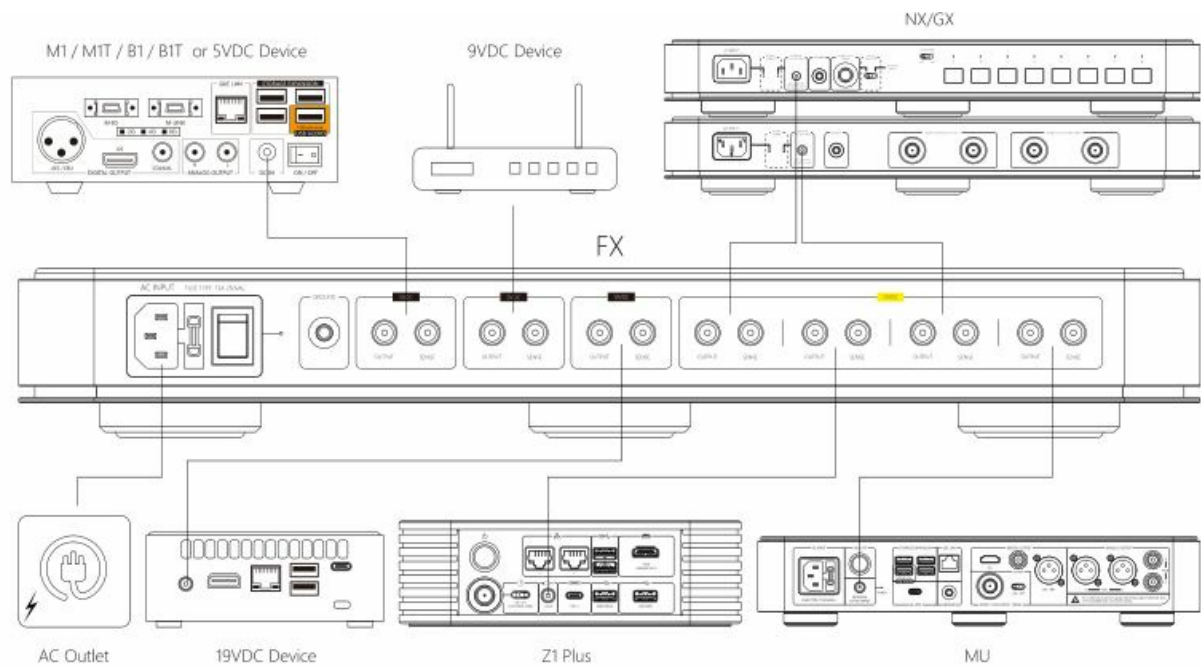


Note 1: Please perform wiring with the power turned off.) (Note 2: Please confirm whether the output voltage meets the equipment operating voltage)

(Note 3: If the wrong port is connected, the protection mechanism of the device will be triggered. After the correct connection, you can restart the device)



Connection Diagram

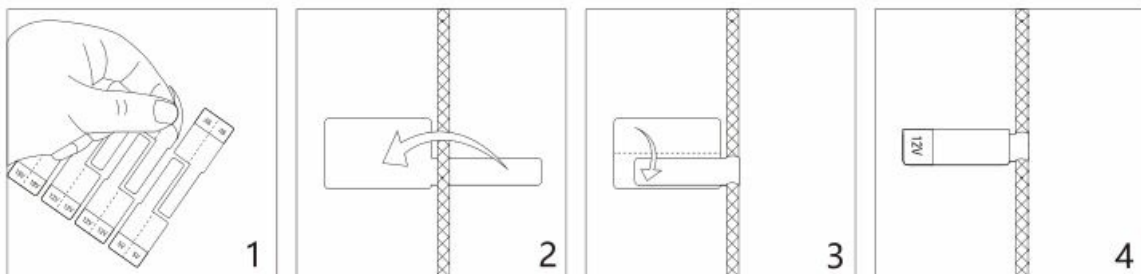


Product Functions and Parameters:

Model	FX
Color	Silver/Black
Introduce	Ultra-low noise, multi-channel output power supply.
Voltage Output	Voltage: 5V/9V/12V/19V, maximum output of each power supply is 3A, maximum total output power is 100 Watt.
Power Requirements (depending on region)	100-240V ~ 50/60Hz

VOLTAGE LABELS Usage

1. Select the power cord you want to paste_
2. Tear off the voltage label corresponding to the voltage connected to the power cord and stick it to the input end of the power cord (or other obvious location)
3. The correct way to use labels is as follows:




Note: You must choose a voltage sticker that is the same as the voltage that the power cord is connected to to avoid damage to your device when connecting.

Contents

- 1 Documents / Resources
- 1.1 References

Documents / Resources

	<p>SILENT ANGEL FX Ultra Low Noise Multi Channel Output Power Supply [pdf] User Guide</p> <p>FX Ultra Low Noise Multi Channel Output Power Supply, FX, Ultra Low Noise Multi Channel Output Power Supply, Low Noise Multi Channel Output Power Supply, Noise Multi Channel Output Power Supply, Multi Channel Output Power Supply, Output Power Supply, Power Supply, Supply</p>
---	--

References

- [User Manual](#)

[Manuals+](#), [Privacy Policy](#)

This website is an independent publication and is neither affiliated with nor endorsed by any of the trademark owners. The "Bluetooth®" word mark and logos are registered trademarks owned by Bluetooth SIG, Inc. The "Wi-Fi®" word mark and logos are registered trademarks owned by the Wi-Fi Alliance. Any use of these marks on this website does not imply any affiliation with or endorsement.