



## siku 6882 Claas Axion Set with Remote Control Instruction Manual

[Home](#) » [siku](#) » siku 6882 Claas Axion Set with Remote Control Instruction Manual 

### Contents

- [1 siku 6882 Claas Axion Set with Remote Control](#)
- [2 Product Usage Instructions](#)
- [3 Inserting the batteries](#)
- [4 System start](#)
- [5 Control](#)
- [6 Documents / Resources](#)
  - [6.1 References](#)
- [7 Related Posts](#)



**siku 6882 Claas Axion Set with Remote Control**



## Product Information

The product is a SIKUCONTROL tractor with a steering feature. It comes with a user manual that provides instructions on how to adjust the steering. The tractor can be adjusted using the provided link or by sending the model to the retailer or siku customer service if needed. The product complies with part 15 of the FCC Rules and meets the radiation exposure limits set forth for an uncontrolled environment.

## Product Usage Instructions

1. To adjust the steering on your SIKUCONTROL tractor, follow these steps:
  1. Click on the following link to access the necessary documents for steering adjustment: [Steering Adjustment Manual](#)
  2. Read and follow the instructions provided in the manual to adjust the steering of your tractor.
2. If you are unable to adjust the steering using the instructions, you have two options:
  1. Send your model to the retailer where you purchased it for assistance.
  2. Contact siku customer service directly for further support.

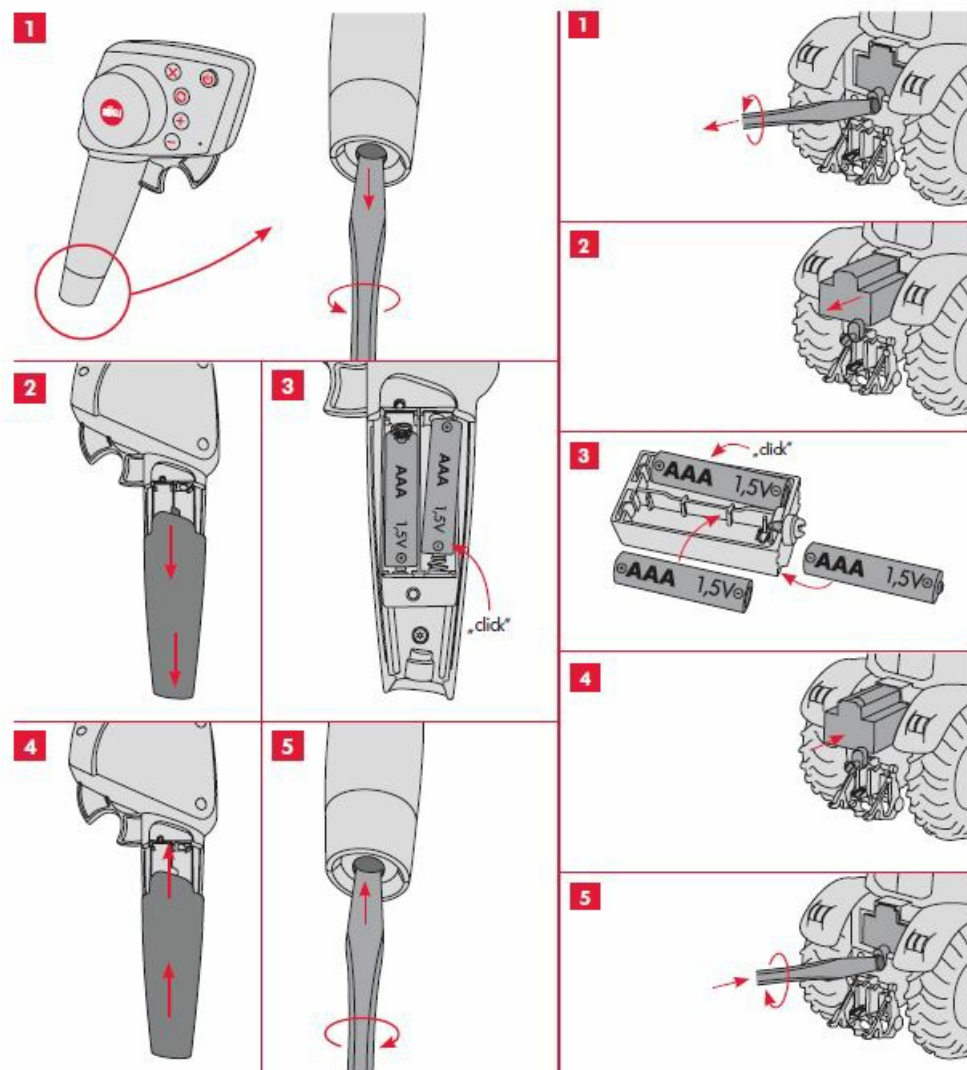
**CAUTION:** Any changes or modifications made to the device without explicit approval from the responsible party may void the user's authority to operate the device. Please consult the dealer or an experienced radio/TV technician for help.

The device complies with FCC Rules and should not cause harmful interference. However, if interference occurs, try the following measures:

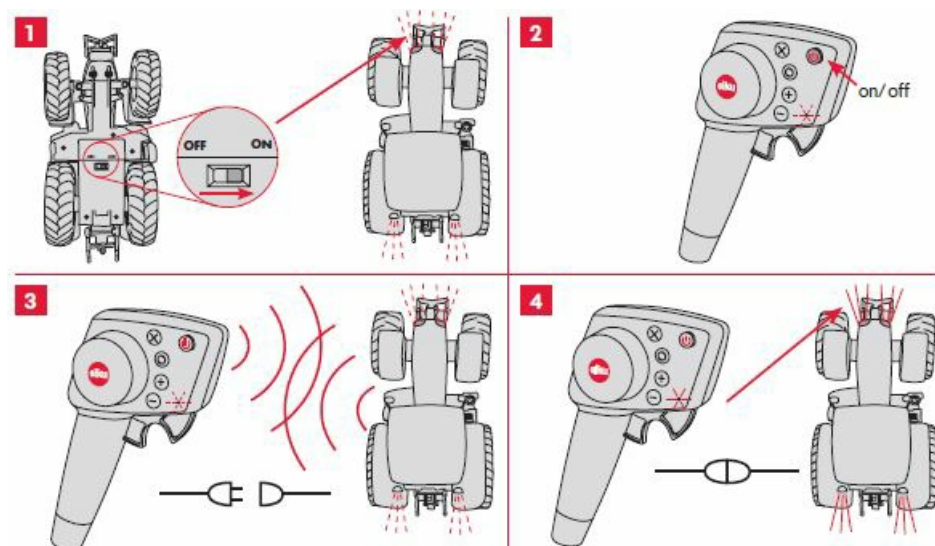
- Reorient or relocate the receiving antenna.
- Increase the separation between the equipment and receiver.
- Connect the equipment into an outlet on a different circuit than the receiver.
- Consult the dealer or an experienced radio/TV technician for assistance.

Bedienungsanleitung Traktoren 68XX Serie / Operating instructions for 68XX Series tractors / Mode d'emploi Tracteurs série 68XX / Instrucciones de uso tractores serie 68XX / Gebruikshandleiding tractoren serie 68XX

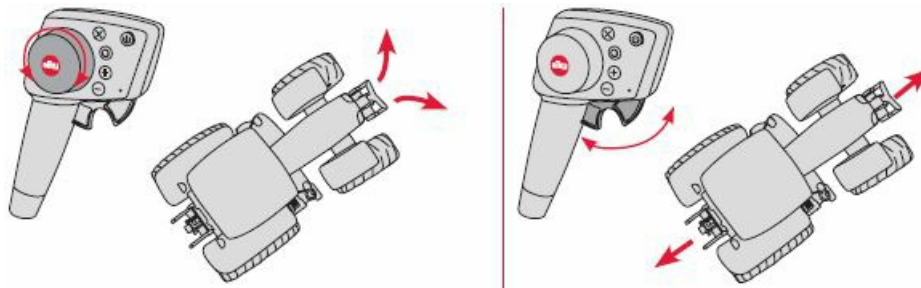
## Inserting the batteries



## System start



## Control



If the steering on your SIKUCONTROL tractor ever gets out of adjustment, you can re-adjust it yourself. To do so, click the following link: [https://www.siku.de/fileadmin/Service/Downloads/Anleitungen/Lenkung\\_justieren\\_6880-6882.pdf](https://www.siku.de/fileadmin/Service/Downloads/Anleitungen/Lenkung_justieren_6880-6882.pdf). This link will take you to the necessary documents. If the steering cannot be adjusted with the help of the instructions, please send your model to the retailer or directly to siku customer service.

**CAUTION:** Changes or Modifications not expressly approved by the party responsible could void the user's authority to operate this device.

This device complies with part 15 of the FCC Rules. Operation is subject to the following two conditions: (1) This device may not cause harmful interference, and (2) this device must accept any interference received, including interference that may cause undesired operation.

**NOTE:** This equipment has been tested and found to comply with the limits for a Class B digital device, pursuant to part 15 of the FCC Rules. These limits are designed to provide reasonable protection against harmful interference in a residential installation. This equipment generates, uses and can radiate radio frequency energy and, if not installed and used in accordance with the instructions, may cause harmful interference to radio communications. However, there is no guarantee that interference will not occur in a particular installation. If this equipment does cause harmful interference to radio or television reception, which can be determined by turning the equipment off and on, the user is encouraged to try to correct the interference by one or more of the following measures:

- Reorient or relocate the receiving antenna.
- Increase the separation between the equipment and receiver.
- Connect the equipment into an outlet on a circuit different from that to which the receiver is connected
- Consult the dealer or an experienced radio/TV technician for help.

This equipment complies with FCC radiation exposure limits set forth for an uncontrolled environment.

## Documents / Resources

	<p><a href="#">siku 6882 Claas Axion Set with Remote Control</a> [pdf] Instruction Manual 6882, 6882 Claas Axion Set with Remote Control, Claas Axion Set with Remote Control, Axion Set with Remote Control, Set with Remote Control, Remote Control, Control</p>
--	--

## References

- [siku und Toddys: Hochwertige, detaillierte und lustige Spielzeugfahrzeuge](#)

