



# SIKAI CASE B0B79WKRQ3 6 Key Macro Programmable Keyboard User Manual

[Home](#) » [SIKAI CASE](#) » SIKAI CASE B0B79WKRQ3 6 Key Macro Programmable Keyboard User Manual 

## Contents

- [1 SIKAI CASE B0B79WKRQ3 6 Key Macro Programmable Keyboard](#)
- [2 Product Specifications](#)
- [3 Download software](#)
- [4 Function Setting](#)
- [5 Demonstration](#)
- [6 FAQs](#)
- [7 Documents / Resources](#)
  - [7.1 References](#)
- [8 Related Posts](#)

# SIKAI

## SIKAI CASE B0B79WKRQ3 6 Key Macro Programmable Keyboard



## Product Specifications

- Keyboard Switch: Dustproof Red Switch
- Material: PC
- Package: Keyboard\*1, USB Cable\*1, User Manual\*1
- Connection: USB-C Cable



6 KEY+1 Knob



4 KEY



3 KEY+1 Knob



3 KEY



2 KEY

## Download software

Method 1, Scan the QR code, download and install the [Mini Keyboard) software;  
Method 1, Visit the official website to download the (Mini Keyboard) software.

<https://sikaicase.com/blogs/news/before-software-setting>



Scan and download software

## Function Setting

1. Use the USB-C cable to connect the mini keyboard to the PC, and open the (Mini Keyboard) customization software on the PC. The software will automatically connect and display (Connected);
2. On the customization software, click any key KEY1-KEY16 or knob K1- K3 that you want to set, and you can set a single key or a combination key according to your own needs. (Max 5 characters)
3. If you need to use the keyboard on Mac, please use the Windows system for customization first Command-Win, Option=Alt, Control=CH

## Demonstration

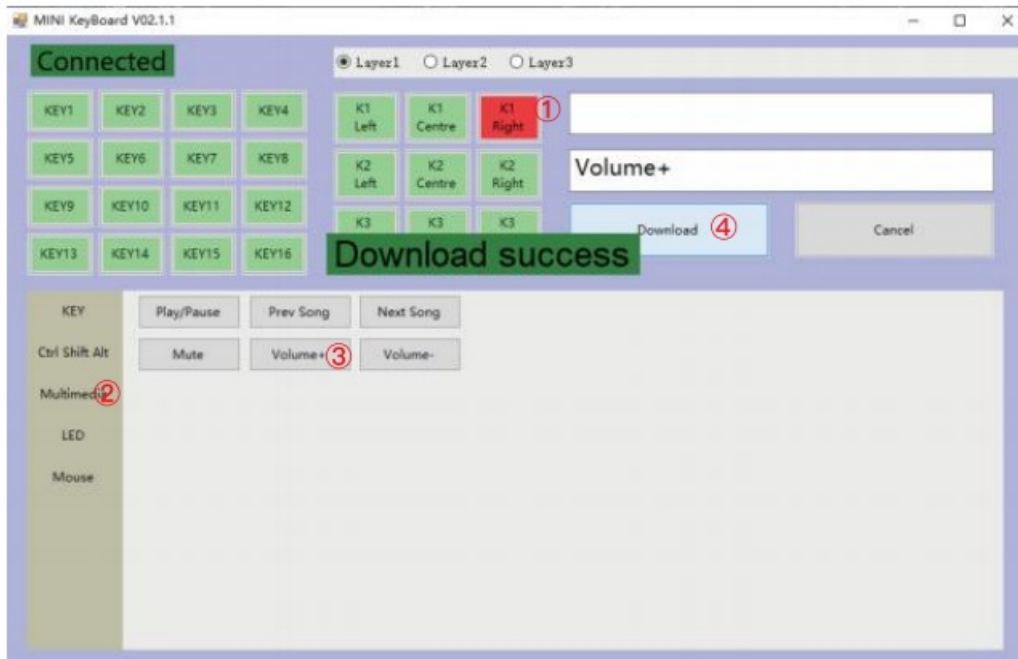
**For example, 1, keyboard key 1 needs to be set to [Ctrl+C] combination shortcut key**  
Key setting area click KEY1— Key — Chri \_CL Download]



**For example, 2, keyboard key 2 needs to be set to [Ctrl+V] combination shortcut key**  
Key setting area click [KEY2] — [Key] — [Ctrl] —V— [Download]



**For example, 3, keyboard knob 1 turns right and needs to be set to [Volume+] shortcut key**  
Knob setting area click [K1 Right] — [Multimedia] — [Volume+] — [Download]



## FAQs

How do I use the keypad after connecting it to the computer for the first time?

Wait for the USB driver to install automatically and then you can use it

How do I change the keypad settings after redefining them?

Just set up a new function and it will overwrite and save the previous one.

What should I do if I get an error message when setting up functions?

Try a different USB port, close and reopen the setting software.

Why is my computer slow and unable to control the volume after setting up multimedia functions?

Close the setting software after setting up.

Can I use the keypad on a Mac system?


Yes, but you need to set it up on a Windows system first. Win=Command key, Alt=Option key. For example, to copy on Mac, set Win+C on Windows

What if I can't open the setting software after downloading it?

Check if your antivirus software blocks it, and add it as a trusted file.



**Documents / Resources**

	<a href="#">SIKAI CASE B0B79WKRQ3 6 Key Macro Programmable Keyboard</a> [pdf] User Manual B0B79WKRQ3 6 Key Macro Programmable Keyboard, B0B79WKRQ3, 6 Key Macro Program mable Keyboard, Macro Programmable Keyboard, Programmable Keyboard, Keyboard
---	--

**References**

- [User Manual](#)