



# SIIG 4K60Hz Quad-View HDMI Mouse Roaming KVM Processor User Manual

[Home](#) » [SIIG](#) » SIIG 4K60Hz Quad-View HDMI Mouse Roaming KVM Processor User Manual 

## Contents

- [1 SIIG 4K60Hz Quad-View HDMI Mouse Roaming KVM Processor](#)
- [2 Safety and Notice](#)
- [3 Features](#)
- [4 Package contents](#)
- [5 Layout](#)
- [6 Hotkey](#)
- [7 IR remote control](#)
- [8 Web control](#)
- [9 OSD Control](#)
- [10 Firmware update](#)
- [11 Documents / Resources](#)
- [12 Related Posts](#)



## SIIG 4K60Hz Quad-View HDMI Mouse Roaming KVM Processor



## Safety and Notice

The device has been tested for conformance to safety regulations and requirements, and has been certified for

international use. However, like all electronic equipment, the device should be used with care. Please read and follow the safety instructions to protect yourself from possible injury and to minimize the risk of damage to the unit.

- Follow all instructions and warnings marked on this unit.
- Do not attempt to service this unit yourself, except where explained in this manual.
- Provide proper ventilation and air circulation and do not use near water.
- Keep objects that might damage the device and assure that the placement of this unit is on a stable surface.
- Use only the power adapter and power cords and connection cables designed for this unit.
- Do not use liquid or aerosol cleaners to clean this unit.
- Always unplug the power to the device before cleaning.

## **Features**

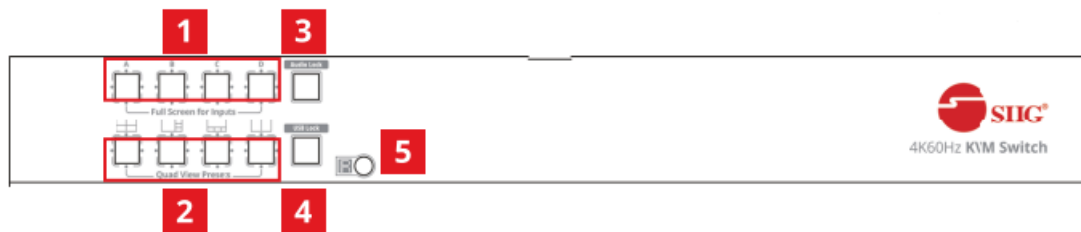
- 4x HDMI inputs and 2x HDMI outputs
- Input resolutions support from 640×480 to 4k@60Hz (4:4:4 8bits), interlaced or progressive
- Output resolutions support up to 4K@60Hz 4:4:4 8bits
- Supports full screen & quad-view display
- HDCP 1.4/2.2 compliant
- Supports UR audio extract
- Supports un-compressed 7.1 ch digital HDMI
- Supports Web control, IR remote and front panel control
- Supports mouse roaming at the default Quad view mode
- Supports two USB3.0 ports to share USB devices
- Supports independent HID keyboard & mouse ports
- Supports hotkey control
- Plug and Play without any driver needed
- Firmware upgradable

## **Package contents**

- 4K60Hz Quad-View HDMI Mouse Roaming KVM Processor
- IR remote control
- IR receive cable
- Power adapter DC 12V/3.33A
- User Manual

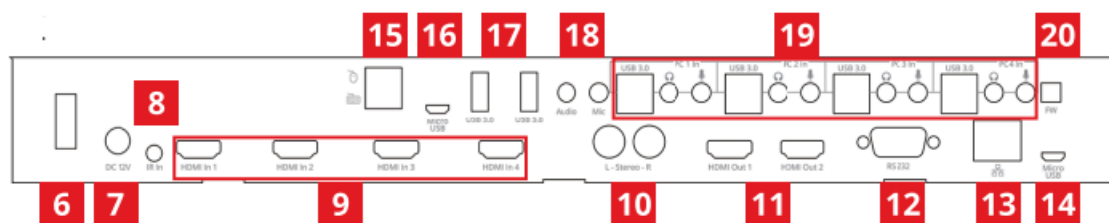
## **Layout**

### **Front Panel**



1. Full screen display: source selection
2. Display mode : select display mode
3. Audio Lock: lock the selected PC stereo audio in/out to console
4. USB Lock: lock the selected PC USB to console
5. IR SENSOR: receiving the IR commands from IR remote

## Rear Panel



6. Power switch:
7. DC power jack: connect to power adapter DC 12V/3.33A
8. IR Receiver: for plugging in the extension IR receive cable
9. HDMI input connect to PC HDMI output
10. L/R Stereo Audio output connect to speaker
11. Console HDMI OUT: connect to display (1&2 have same video output)
12. RS-232 control port: reserved
13. Ethernet: connect to LAN for WEB control
14. Micro USB: for Quad-Viewer F/W update
15. USB HID ports: only for keyboard and mouse use
16. Micro USB: for KVM F/W update
17. Console USB 3.0 hubs: connect to USB devices, 5Gbps, 5V/900mA
18. Console Audio: connect to 3.5mm speaker and microphone
19. KVM USB 3.0 Type-B 1-4: connect the USB cable to PC
  - KVM Stereo Audio IN 1-4: connect the 3.5mm cable to PC
  - KVM Stereo Audio OUT 1-4: connect the 3.5mm cable to PC
20. 2-Pin Dip Switch: for KVM F/W update

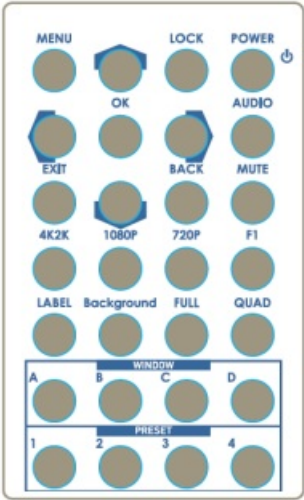
Position			Description
PIN#1 PIN#2	ON[↓]	ON[↓]	KVM firmware update mode
	ON[↓]	OFF[↑]	Reserved
	OFF[↑]	ON[↓]	Working mode
	OFF[↑]	OFF[↑]	Reserved

Hotkey

Default setting, all of the following commands begin by pressing the [Scroll Lock] or [Ctrl] key twice. Please follow the Hotkey command listed below for selected operating functions:

Hot key Definition	
[Ctrl] + [Ctrl] + [NUMBER1~4]	Switch input 1~4 source to output in Full screen mode
[Ctrl] + [Ctrl] + [F1/F2/F3/F4]	Quad view mode 1 -4 select
[Ctrl] + [Ctrl] + [L] + [U]	USB Lock/ USB Unlock
[Ctrl] + [Ctrl] + [L] + [A]	3.5mm Audio Lock/ Audio Unlock
[Ctrl] + [Ctrl] + [A] + [Number 1~4]	Under quad view mode, select PC 1~4 Audio to HDMI output
[Ctrl] + [Ctrl] + [O] + [F] + [F]	Turn off HOTKEY function
[Ctrl] + [Ctrl] + [O] + [N]	Turn on HOTKEY function

IR remote control



Button	Function
MENU	OSD menu
▲	Arrow button (up)
LOCK	Lock/unlock the device
POWER	Power on/off the device
◀	Arrow button (left)
OK	Trigger the setting
▶	Arrow button (right)
AUDIO	Select audio sources
EXIT	Exit from the menus
▼	Arrow button (down)
BACK	Back to previous page of OSD menu
MUTE	Turn off the audio
4K2K	Switch output resolution to 4K2K 60Hz
1080P	Switch output resolution to 1080p 60Hz
720P	Switch output resolution to 720p 60Hz
F1	Reserved
LABEL	Window label ON/OFF
Background	Reserved
FULL	Fast switch to full screen mode
	*Combination button: After pressing the FULL button, please press the A/B/C/D button to switch window

QUAD	Fast switch to quad-view mode
A	Select source A to be the input source
B	Select source B to be the input source
C	Select source C to be the input source
D	Select source D to be the input source
1	User preset 1
2	User preset 2
3	User preset 3
4	User preset 4

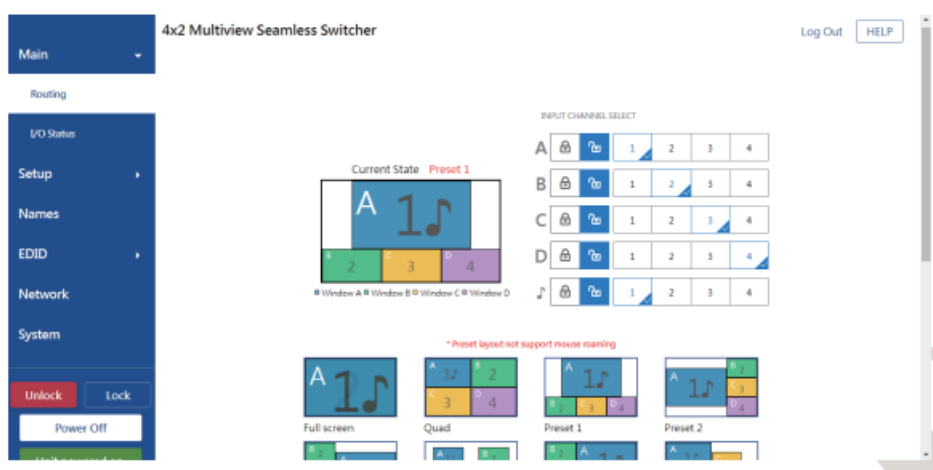
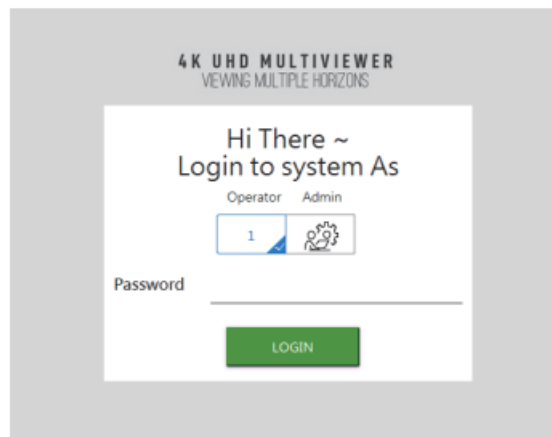
\*Need to set the preset layouts in the software

## Web control

The default IP is 192.168.1.179

User can choose Operator or Adm in account to login.

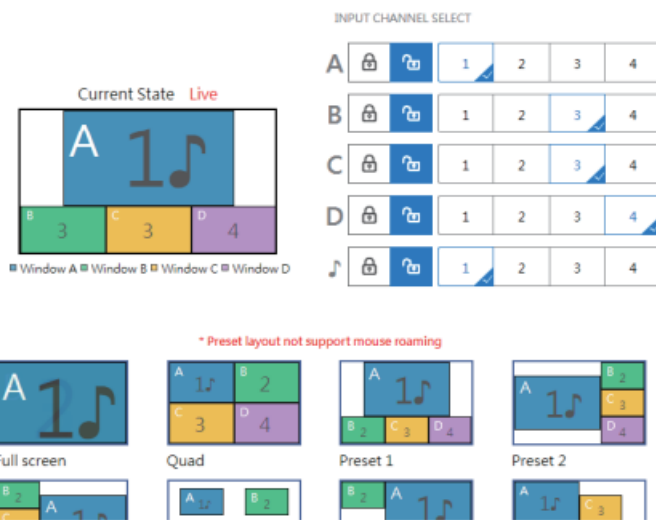
1. The password of Operator: operator
2. The password of Adm in: ad min



### • Routing:

We provide full screen, quad, and 18 preset modes for user to select. Then you can set different channels (1-4) for windows (A-D) and select the sound output source. In addition, you can turn on or turn off the sound and screen of each window arbitrarily.

\* The preset mode does not support the mouse roaming function.



## • 1/0 Status:

### Output

Feature	Output
RSENSE	low
HPD	low
HDCP	N

### Input

Feature	Input 1	Input 2	Input 3	Input 4
Color Depth	n/a	n/a	n/a	n/a
Color Space	n/a	n/a	n/a	n/a
HDCP	N	N	N	N
Active Signal	N	N	N	N
Horizontal Resolution	0	0	0	0
Vertical Resolution	0	0	0	0
Progressive / Interlaced	n/a	n/a	n/a	n/a
Refresh Rate	n/a	n/a	n/a	n/a
Video Mode	n/a	n/a	n/a	n/a

## • Video Setup:

- Output Resolution: Select the output resolution.
- Select Window: Select the window you want to set.
- Picture Settings: Set the picture details for the selected window, including “Brightness”, “Contrast”, “Saturation”, and “Hue”.

In addition, you can determine if the window’s label/border is turned on or off.

720 x 480 60Hz	720 x 576 50Hz	1280 x 720 50Hz	1280 x 720 59Hz
1280 x 720 60Hz	1920 x 1080 30Hz	1920 x 1080 50Hz	1920 x 1080 59Hz
1920 x 1080 60Hz	3840 x 2160 30Hz	3840 x 2160 50Hz	3840 x 2160 59Hz
3840 x 2160 60Hz			

Window A B C D

### Picture Settings

Brightness 50

Contrast 50

Saturation 50

Hue 50

Source Label ☒ YES Window Label ☒ YES

Border ☒ YES Border Tally ☒ YES

### • Windows Setup:

First, choose a preset mode to set, and then you can set individually for each window, including “X Position”, “Y Position”, “Width”, “Height”, etc. You can also directly select the area to move the position and change the size. If you choose live mode, you can see the changes from the screen immediately after setting. Besides, you can also set different channels (1-4) for windows (A-D) and select the sound output source here.

Select Preset Live Route Only Preset YES NO

Full screen

Quad

Preset 1

Preset 2

Preset 3

Preset 4

Preset 5

Preset 6

Preset 7

Preset 8

Preset 9

Preset 10

Preset 11

Preset 12

Preset 13

Preset 14

Preset 15

Preset 16

Preset 17

Window A

Window C

Window D

RESET ALL

### Select Window

A B C D

X Position 0

Y Position 0

Width 1920

Height 1080

Priority 1

### • Routing

Window

A	1	2	3	4	Mask	X
B	1	2	3	4	Mask	X
C	1	2	3	4	Mask	X
D	1	2	3	4	Mask	X
♪	1	2	3	4	Mask	X

Save To Preset 1 SAVE

- **HPD Control:**

You can re-plug input and output by clicking “PULSE” button.

#### Inputs

Input 1	<span>PULSE</span>
Input 2	<span>PULSE</span>
Input 3	<span>PULSE</span>
Input 4	<span>PULSE</span>
	<span>PULSE ALL</span>

#### Output

Output	<span>PULSE</span>
--------	--------------------

- **HDCP:**

You can set HDCP mode for each input, including “Reject”, “Accept 1.4 only”, and “Accept 1.4 & 2.2”, and you can also set the output mode, including “Follow Input”, “Always Encrypt 1.4”, and “Always Encrypt 2.2.”

## HDCP Pass Through

### Inputs

Input 1	Reject	Accept 1.4 only	Accept 1.4 & 2.2
Input 2	Reject	Accept 1.4 only	Accept 1.4 & 2.2
Input 3	Reject	Accept 1.4 only	Accept 1.4 & 2.2
Input 4	Reject	Accept 1.4 only	Accept 1.4 & 2.2

### Outputs

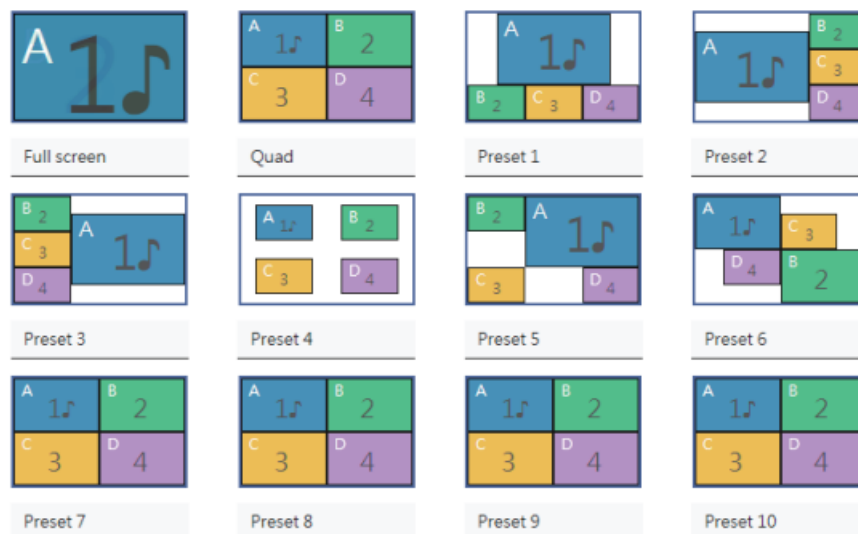
HDMI	Follow Input	Always Encrypt 1.4	Always Encrypt 2.2
------	--------------	--------------------	--------------------

- **Background:**

Reserved

- **Names:**

You can set names for 18 preset modes. You can also set names for inputs and windows to be shown with the video. After you finish naming, remember to click “SAVE” button to save the settings.



### Input Names

Input 1	Input 1
Input 2	Input 2
Input 3	Input 3
Input 4	Input 4

### Window Names

Window A	Window A
Window B	Window B
Window C	Window C
Window D	Window D

- **EDID mode:**

You can select EDID mode of input 1-4, and check the name of each EDID and whether to lock it.

#### EDID Mode

Input	EDID Mode	EDID Name	EDID Lock	
Input 1	2160p	MIT Matrix	Lock	Unlocked
Input 2	2160p	MIT Matrix	Lock	Unlocked
Input 3	User-defined	GSM LG HDR 4K	Lock	Unlocked
Input 4	2160p	MIT Matrix	Lock	Unlocked

- **EDID Copy:**

You can select EDID from output and inputs to copy, and select the destination. Then click “Copy” button to complete the copy.

#### Select EDID to Copy

Select One

##### Output

HDMI

##### Inputs

Input 1

Input 2

Input 3

Input 4

#### Select Copy Destination

Select One or More

##### Inputs

Inputs must be in custom EDID mode and unlocked

Input 1

Input 2

Input 3

Input 4

Copy

- **EDID Info:**

You can choose different input EDID through the drop-down list to check the feature and audio formats.

Choose EDID

Input 1

-- Input --

Input 1

Input 2

Input 3

Input 4

-- Input --

HDMI

Feature

Max Color Depth

Mode (DVI/HDMI)

- **EDID Upload/Download:**

You can click “BROWSE” button to open EDID from file, and select the destination. Then press “UPLOAD” button to upload EDID. You can also download EDID to your computer.

## Upload EDID

Select EDID File:

BROWSE...

Select Destination:

Input 1

UPLOAD

## Download EDID to your Computer

Select EDID File:

Output

DOWNLOAD

- **Network setting:**

### IP Settings

MAC Address	80:1f:12:67:35:c2	IP Address	192.168.1.46
HTTP Port	80	Subnet	255.255.255.0
Mode	<div>Static</div> <div>DHCP</div>	Gateway	192.168.1.1

### TCP/Telnet Settings

TCP Access	<div>Enable</div> <div>Disable</div>	User Name	Admin
TCP Port	23	Old Password	
Login Message on Connect	<div>Show</div> <div>Hide</div>	New Password	
Require Password on Connect	<div>Enable</div> <div>Disable</div>	Confirm New Password	

CHANGE PASSWORD

### Web Login Settings

Username	<div>Operator</div> <div>Administrator</div>	Old Password	
New Password		Confirm New Password	

CHANGE PASSWORD

- **System:**

Unsolicted Feedback

Enable

Disable

OSD Timeout

Disable

5 Sec

10 Sec

30 Sec

60 Sec

Firmware Version

v1.36

Download Current Configuration to PC

DOWNLOAD

Restore/Upload Configuration File

BROWSE...

RESTORE

Warning: All current settings will be lost

Factory Reset

RESET

Reboot

REBOOT

• Power:

- Lock/ Unlock: Click button to lock or unlock the device.
- Power Off/ Unit powered on: The device is powered on. Click
- “Power Off” button to turn off the power
- Power On/ In standby mode: The device is in standby mode. Click “Power On” button to turn on the power.





## OSD Control

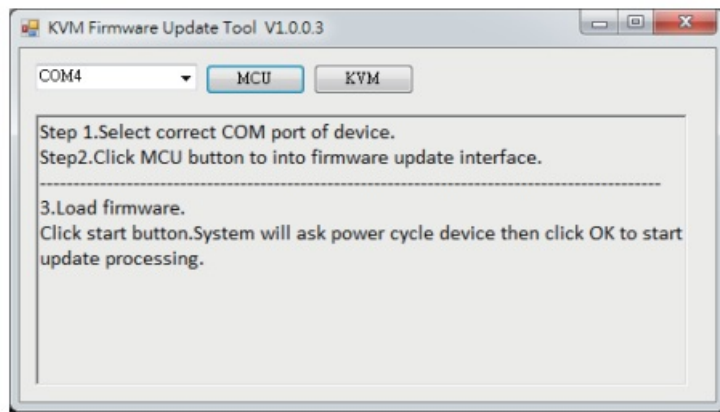
1. Main	Presets	Full Screen, Quad, Preset 1-18
	Routing	Input 1-4, Off
	Audio	Input 1-4, Mute
	Switch Mode	Seamless, Fade In/Out, Dissolve, Wipe
	Wipe Mode	Left to Right, Right to Left, Up to Down, Down to Up
	Transition Time	0.0-10.0
	HDR	Enable, Disable

<b>2. Setup</b>	Output Resolution	480p, 576p, 720p 50Hz, 720p 59.94, 720p 60Hz, 1080p 30Hz, 1080p 50Hz, 1080p 59.94Hz, 1080p 60Hz, 2160p 30Hz, 2160p 50Hz, 2160p 59.94Hz, 2160p 60Hz
	Window Setup	Picture (Brightness, Contrast, Saturation, Hue), Layout (X Position, Y Position, Width, Height, Priority), Label (On, Off)
	HPD Control	Input 1-4, Pulse ALL, Output
	HDCP	Follow Input, Always On 1.4, Always On 2.2
	Background	Reserved
	Audio Mode	Follow Full-Screen, Fixed
	Save Preset	Preset 1-18
<b>3. EDID</b>	Input1-4	External, Custom, Internal 1080p30, Internal 1080p60, Internal 4K30, Internal 4K60
<b>4. Network</b>	IP Settings	Mode, IP Address, Subnet, Gateway, HTTP Port
	TCP/Telnet Settings	TCP Access, Telnet Port, Login Message, and Telnet Login
<b>5. System</b>	Unsolicited Feedback	Enable, Disable
	OSD Timeout	Off, 5 seconds, 10 seconds, 30 seconds, 60 seconds
	Firmware Version	Firmware Version information
	Factory Reset	No, Yes
	Reboot	No, Yes

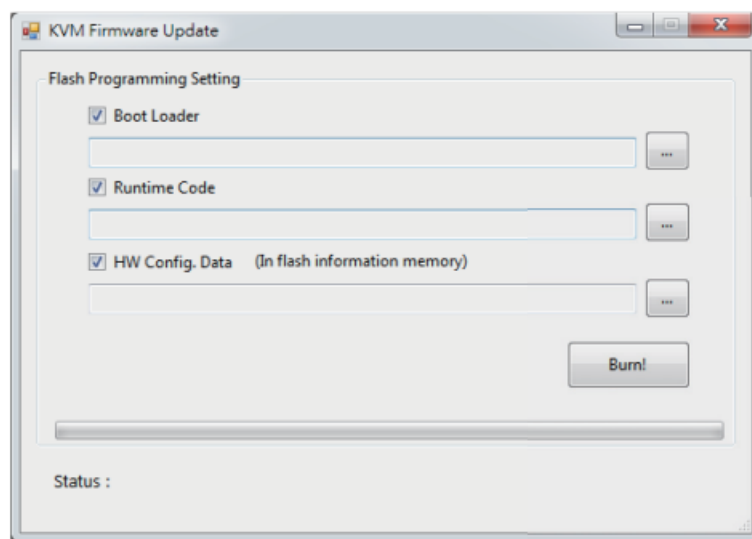
## Firmware update

Firmware update is proceeded through Micro-USB

- KVM F/W update
  - Connect the Micro-USB to USB cable between PC and device
  - Set dip switch [PIN#1,PIN#2] to ON[, OFF []and then power on device
  - Open firmware update software and then select COM Port



- Click “KVM” button to open “KVM Firmware Update” windows. Check all items and click each “...” button to select the file which you want to write into the device. Click the “Burn” button to start the firmware update



- After updating, please set the dip switch [PIN#1, PIN#2] to OFF[  ], ON[  ] and power cycle the device


**Thank You for your purchase!**

## Support

For more info or tech support <http://www.siig.com/support>

Apr, 2022 Copyright© 2022 by SIIG, Inc. All rights reserved.

## Documents / Resources

 <p>SIIG® 4K60Hz Quad-View HDMI Mouse Roaming KVM Processor User Manual</p>	<p><a href="#">SIIG 4K60Hz Quad-View HDMI Mouse Roaming KVM Processor</a> [pdf] User Manual 4K60Hz, Quad-View HDMI Mouse Roaming KVM Processor, 4K60Hz Quad-View HDMI Mouse Roaming KVM Processor, HDMI Mouse Roaming KVM Processor, Mouse Roaming KVM Processor, Roaming KVM Processor, KVM Processor, Processor</p>
--	---