



# SIGURO SGR-AD-D310W USB Aroma Diffuser Instruction Manual

[Home](#) » [SIGURO](#) » SIGURO SGR-AD-D310W USB Aroma Diffuser Instruction Manual 

# SIGURO

USB Aroma Diffuser

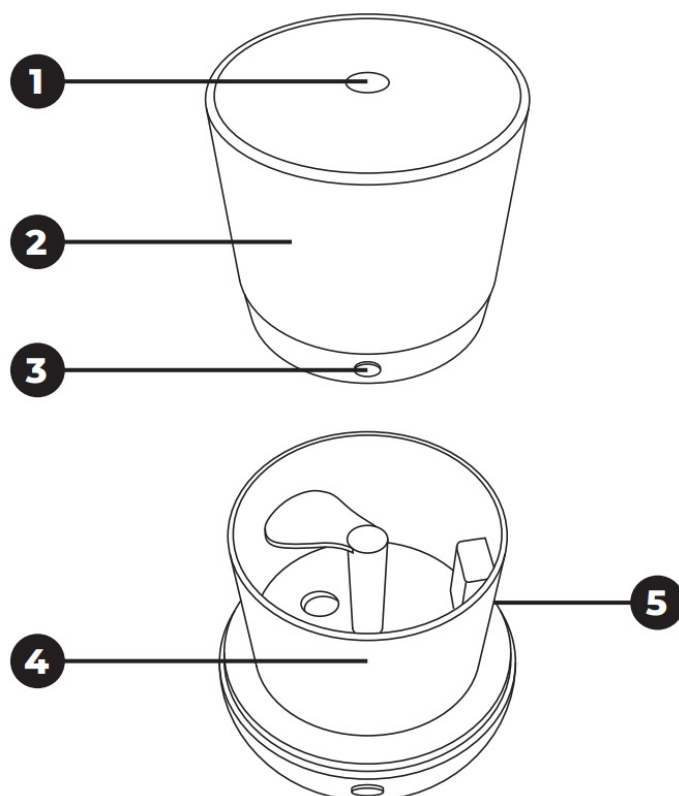


Translation of the operating instructions from the original language.  
SGR-AD-D310W

## Contents

- 1 SGR-AD-D310W USB Aroma Diffuser
- 2 SAFETY INFORMATION
- 3 USE
- 4 CLEANING AND MAINTENANCE
- 5 TROUBLESHOOTING
- 6 Documents / Resources
- 7 Related Posts

## SGR-AD-D310W USB Aroma Diffuser



Thank you for purchasing a SIGURO appliance. We are grateful for your trust and we are pleased to introduce to you the appliance on the following pages and acquaint you with all its functions and uses.

We believe in a fair and responsible company, and therefore we only work with suppliers who meet our strict criteria to protect the interests of employees, prevent their abuse and fair working conditions.

If you need help with extensive maintenance or repair of the product, which requires intervention in its internal parts, our authorized service is available to you at the email address [siguro@alza.cz](mailto:siguro@alza.cz) or operators at the seller's infoline. For your convenience in solving any problems with the product, we have unified these contact points and the above contacts can be used in the event of any complaints or post-warranty service.

## SAFETY INFORMATION



Please read this manual carefully before use and keep it for future reference.

1. This appliance is intended for use by children 8 years of age and older and persons with reduced physical, sensory or mental capabilities, or lack of experience and knowledge, provided they have been given supervision or instruction concerning use of the appliance in a safe manner and understand the potential hazards.

2. Children must not play with the device.
3. Cleaning and user maintenance must not be performed by children without supervision.
4. Before connecting the appliance to the mains, make sure that the mains voltage corresponds to the values on the type plate of the product. Only connect the appliance to a properly grounded outlet.
5. If the power cord, plug, or any other part of the product malfunctions, or if any part of the product has been dropped or otherwise damaged, repair may only be performed by a qualified electrician. Improper repairs can put users at risk of injury.
6. To reduce the risk of electric shock, do not immerse the cord, plug or body of the appliance in water or any other liquid. Do not wash the appliance in the sink or dishwasher.
7. Always unplug the appliance when not in use, when filling and/or when cleaning.
8. The appliance is intended for domestic use only. It is not intended for commercial purposes.
9. Use the appliance only for its intended purpose.
10. Do not place the appliance on window sills, counter drip tray or on unstable surfaces. Always place it on a stable, level and dry surface.
11. Do not place the appliance near a washbasin or sink, on appliances and equipment that are a source of heat or close to them.
12. Do not cover the air inlets or the outlets.
13. Do not touch the device with wet or damp hands.
14. Never use the appliance in a damp place.
15. Never use the appliance close to a source of heat.
16. Never place anything on or in the appliance.
17. Do not use the appliance near flammable objects or products (curtains, aerosols, solvents, etc.).
18. Switch off and disconnect the appliance before moving, during installation and cleaning.
19. When using, leave at least 30 cm of free space on the back and sides of the product and at least 50 cm of free space above the product.
20. Always make sure that the appliance, plug, power cord and adapter are in good condition before use. Do not pull on the power cord or appliance, even when unplugging the adapter. The adapter is not supplied.
21. Pay attention because the appliance produces water vapor.



Clean the water tank every 3 days.

1. Steam output
2. Outer cover
3. Switch
4. Water tank
5. Socket for connecting the USB power cable (at the back)



Power	5 W
Humidification capacity	20 ± 5 ml/h
Noise	<30 dB
Recommended room area	20–40 m <sup>2</sup>
Water tank volume	80 ml
Working time (full tank, minimum power)	3 to 5 hours
Connecting USB cable length	100 cm
Dimensions	110 × 98 × 98 mm
Weight	213 g

## USE

### Before first use

Remove the aroma diffuser from the box and remove all protective foils and packaging materials. Check it is not damaged. Before disposing of the packaging, be sure to remove all components.

### Filling the water tank

1. Remove the outer cover and remove the water tank lid.
2. Pour enough clean water (water must not exceed the MAX line).
3. Add approximately 5 drops of essential oil to the water as desired.
4. Attach the water tank lid and the outer cover on the base and make sure it is tight.

### Use

1. Place the aroma diffuser on a flat, stable surface and plug the USB cable connector into the socket at the back of the aroma diffuser. Plug the USB-A connector into a socket in your PC or a suitable power adapter.
2. Press the switch button once briefly and the aroma diffuser will start up. Steam begins to form. Press the switch again briefly and then press the switch briefly again to change the backlight colour. Press the power switch twice briefly and the backlight will turn off. Long press the switch for 2 seconds and the aroma diffuser switches off. Steam stops forming.
3. When you need to refill the water tank, press the switch button first to turn the aroma diffuser off and then unplug the USB cable. Then you can pour water. Follow the instruction in the part “Filling the water tank”.



### Warning:

Do not pour water through the air outlet.

4. When you do not use the aroma diffuser, press repeatedly the switch button to turn it off, and unplug the USB cable. Steam stops forming. Clean the aroma diffuser according to the instruction in part “Cleaning and maintenance”.

### Automatic shutoff

The aroma diffuser is provided with an automatic switch-off function when the water tank gets empty. Such function protects it against damage due to overheating.



**Warning:**

Do not shake, move, or add water to the aroma diffuser while in operation.  
Do not block the steam and air outputs.

**Tipping over**

If the aroma diffuser is tipped over, follow the steps below.

1. Unplug the aroma diffuser from the power source and remove the cover carefully.
2. Pour out any remaining water from the water tank.
3. Shake the diffuser gently to drain any water from inside.
4. Allow 24 hours for the aroma diffuser to dry thoroughly.

## CLEANING AND MAINTENANCE

Before cleaning or any maintenance, always turn the aroma diffuser off, unplug the USB cable and let it cool down completely.



**Warning:**

Never immerse the aroma diffuser, or the USB cable in water or any other liquid.  
Do not use plastic or metal scrapers, harsh cleaners, chemicals, petrol, solvents, or other similar substances to clean any parts of the appliance. The surface finish could be seriously damaged.

Use only a soft, slightly dampened sponge to clean the outer surface. Wipe dry with a clean cloth.  
Carefully rinse the water tank and wipe dry.

Regularly remove the limescale deposits. That can negatively affect the operation of the aroma diffuser. Use a solution of white vinegar and water in the 1: 3 ratio and leave on for a few minutes. Then pour out the water tank content, carefully rinse with clean water and wipe dry.

If your water is hard, or very hard, it is recommended to use distilled water. Regularly clean the ultrasonic transducer (inside the aroma diffuser) with a soft sponge, slightly moistened in warm water with a little detergent. Use a lukewarm solution with citric acid or vinegar to remove limescale from the ultrasonic transducer. If you use the appliance frequently, we recommend cleaning it at least once a week. Note that a clogged ultrasonic transducer will not function properly!

**Storage**

Make sure that the appliance is cool and clean before storing.  
Keep it in a dry and well-ventilated place out of the reach of children or pets. Do not place any objects on it.

## TROUBLESHOOTING

Problem	Cause	Solution
The aroma diffuser will not switch on.	There is an insufficient amount of water in the water tank.	Fill the tank with water up to the max line. Be careful not to exceed the max line.
	The cable is not connected properly.	Disconnect the cable and reconnect it.
The aroma diffuser does not produce mist, or mist volume is very low.	There is an insufficient amount of water in the water tank.	Fill the tank with water up to the max line. Be careful not to exceed the max line.
	The water tank is filled over the max line.	Pour out excess water. Always mind the max line when filling the tank.
	The tank lid is not positioned correctly.	Remove the cover and place the tank lid correctly.
	The ultrasonic atomizer is clogged with dirt and oil.	Clean the aroma diffuser according to the instruction in part "Cleaning and maintenance".
Water is leaking from the aroma diffuser.	The air suction part underneath the aroma diffuser is blocked or dirty. The tank lid is not positioned correctly.	Clean the air suction as a clogged air suction can adversely affect steam generation. Remove the cover and place the tank lid correctly.
	The aroma diffuser has been knocked or tipped over.	Follow the instruction in the part "Tipping over".
	The temperature is low or there is high humidity.	Under these conditions, the mist may condense quickly into water droplets.

If the problem is not listed in the table above or if the problem persists, switch off the appliance, disconnect the plug from the electrical outlet and contact an authorized service center.

#### Level of protection against electric shock: II



Protection against electric shock is provided by double or reinforced insulation.



For indoor use only.

The use of the WEEE Symbol indicates that this product should not be treated as household waste. By ensuring this product is disposed of correctly, you will help protect the environment. For more detailed information about the recycling of this product, please contact your local authority, your household waste disposal service provider, or the shop where you purchased the item. This product meets all of the related basic EU regulation requirements. The EU declaration of conformity is available on [www.alzashop.com/doc](http://www.alzashop.com/doc). This product sold in the European Union meets the requirements of Directive 2011/65/EU on the restriction of the use of certain hazardous substances in electrical and electronic equipment (RoHS).






Alza.cz, a. s., Jankovcova 1522/53, 170 00 Prague 7, Czech Republic

© 2022 Alza.cz, a. s. All Rights Reserved.

[www.siguro.net](http://www.siguro.net)

## Documents / Resources

	<p><a href="#">SIGURO SGR-AD-D310W USB Aroma Diffuser</a> [pdf] Instruction Manual</p> <p>SGR-AD-D310W USB Aroma Diffuser, USB Aroma Diffuser, SGR-AD-D310W Aroma Diffuser, Aroma Diffuser, Diffuser, SGR-AD-D310W</p>
---	--

[Manuals+](#)